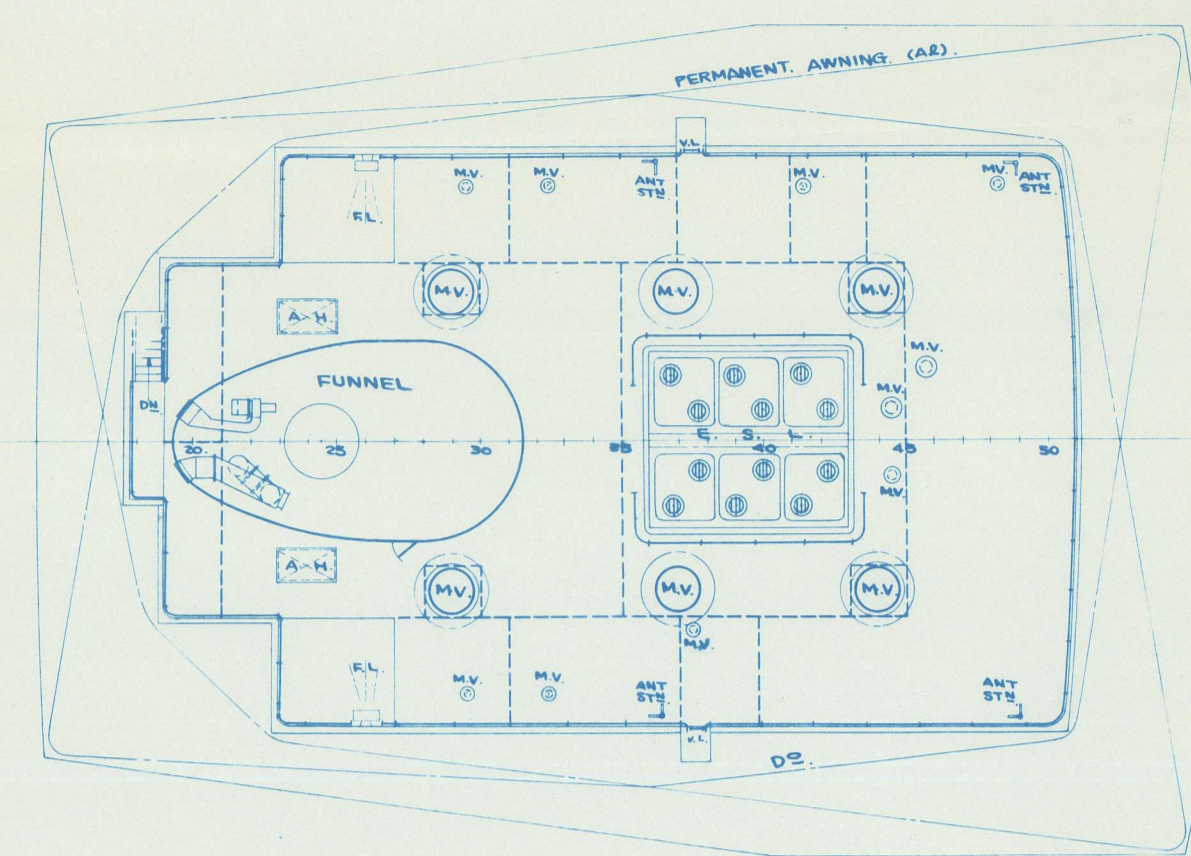
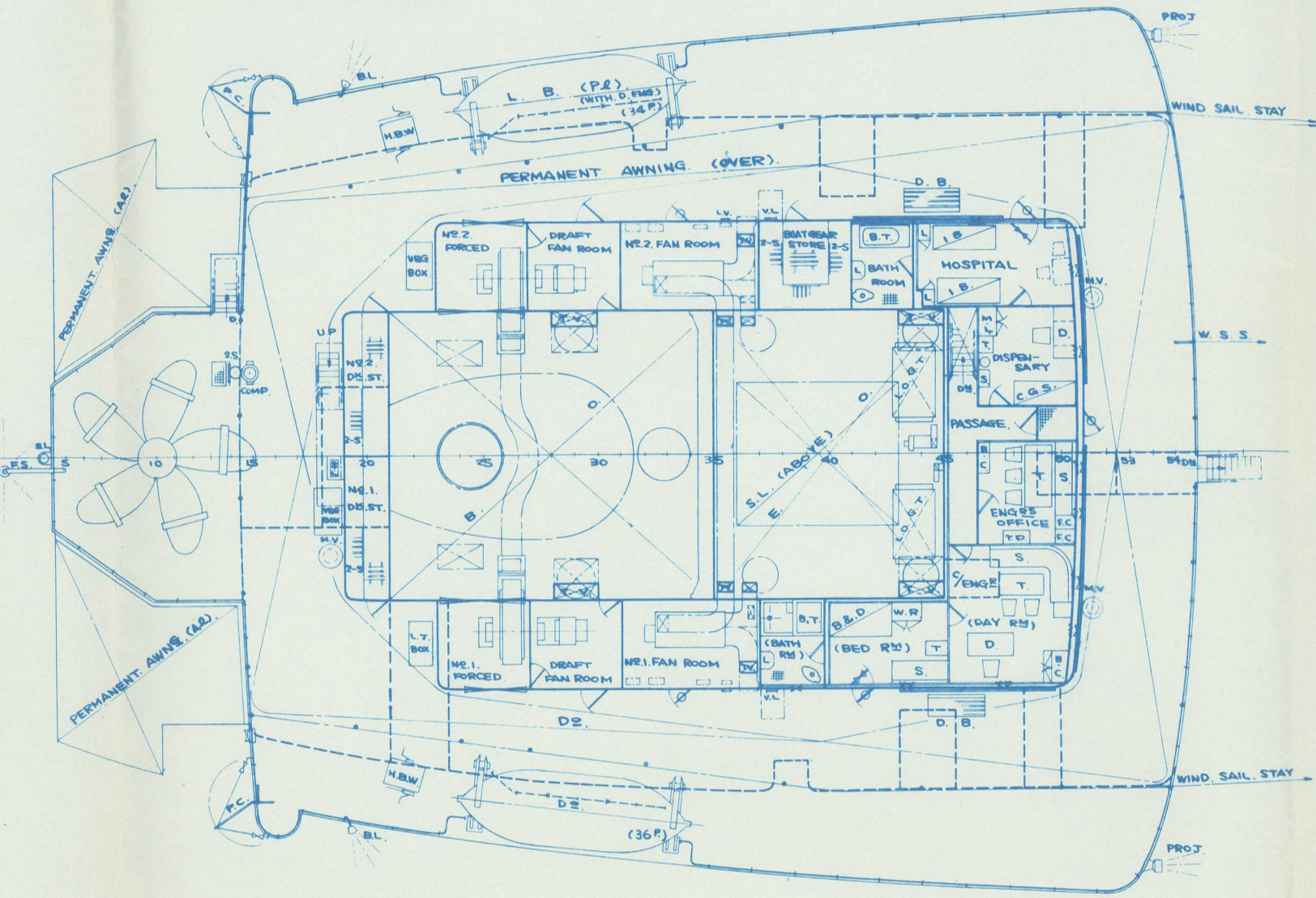




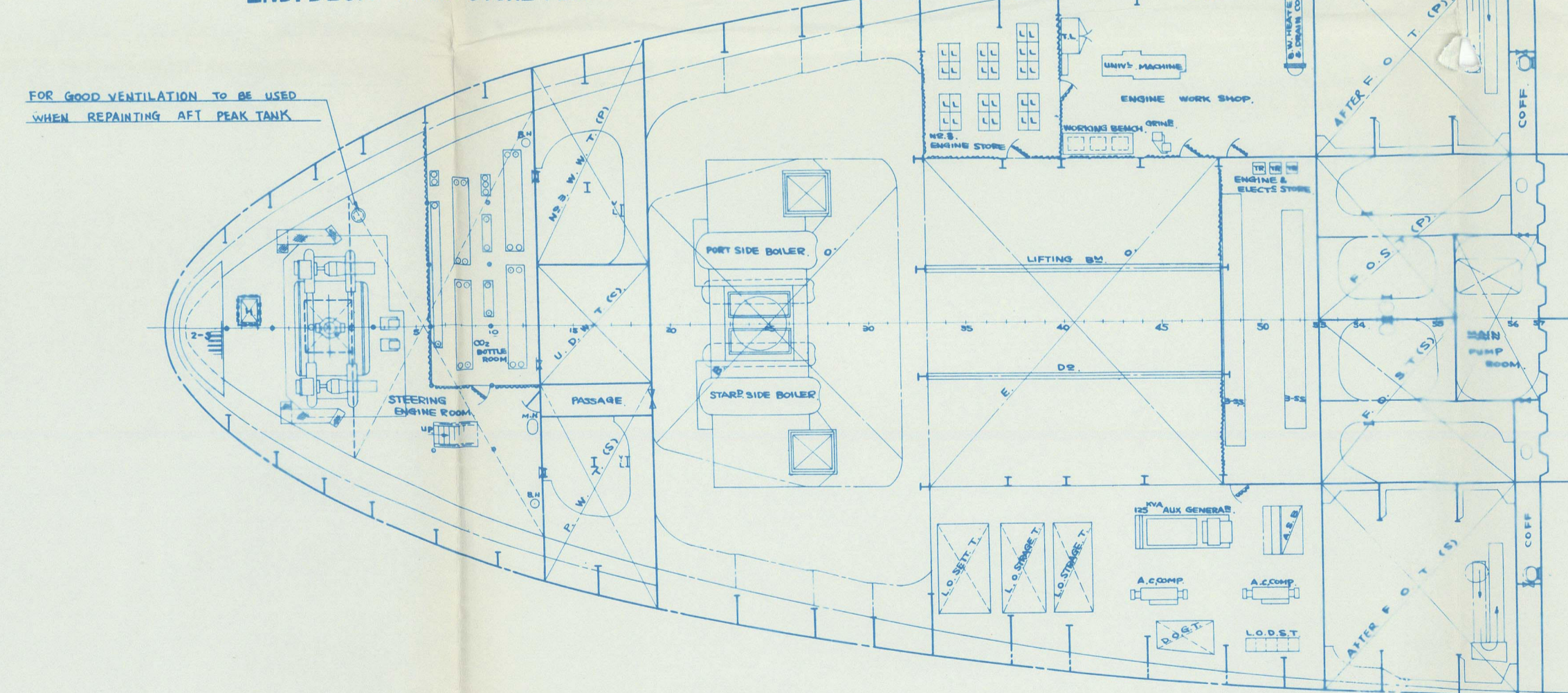
CASING TOP



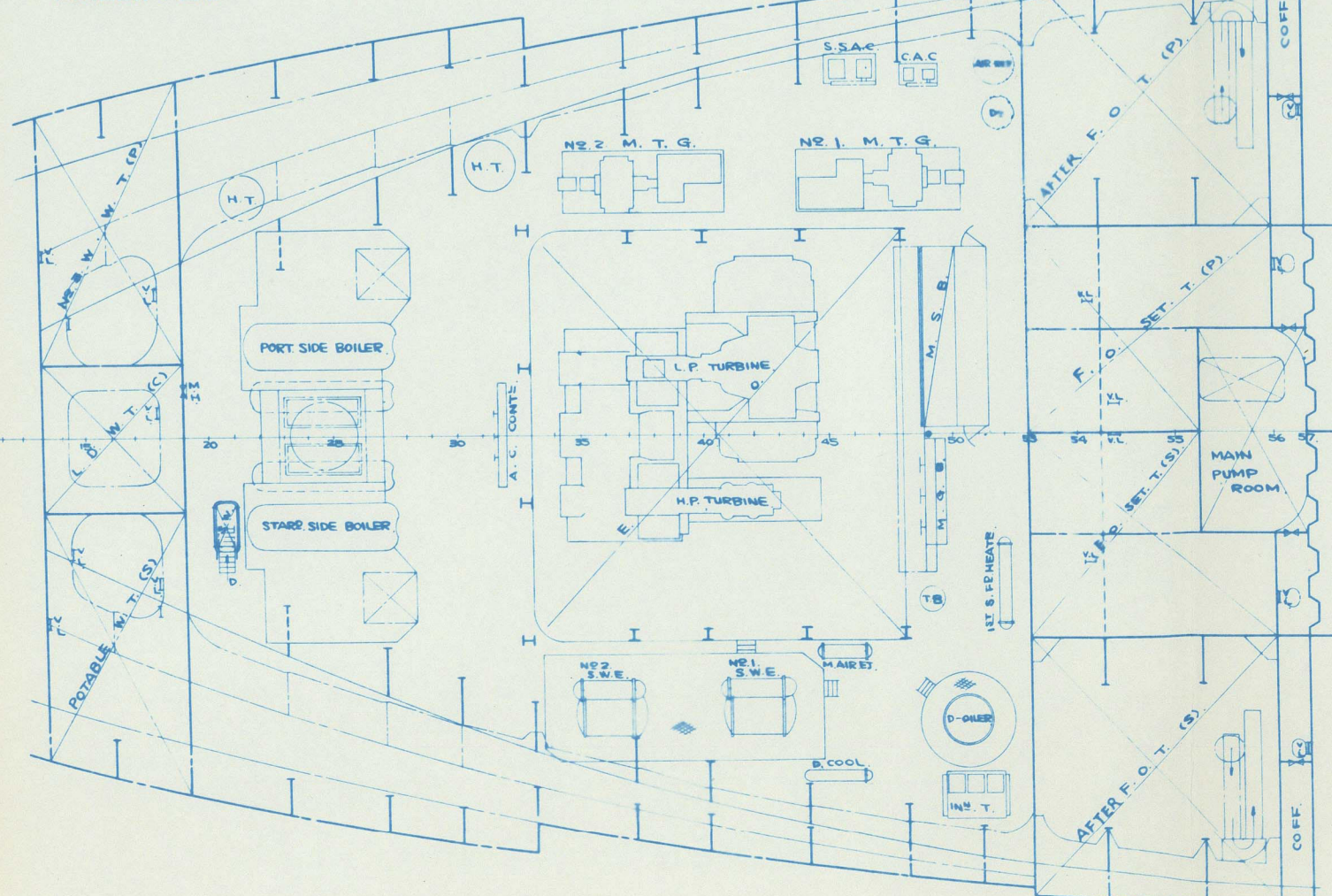
AFTER BOAT DECK



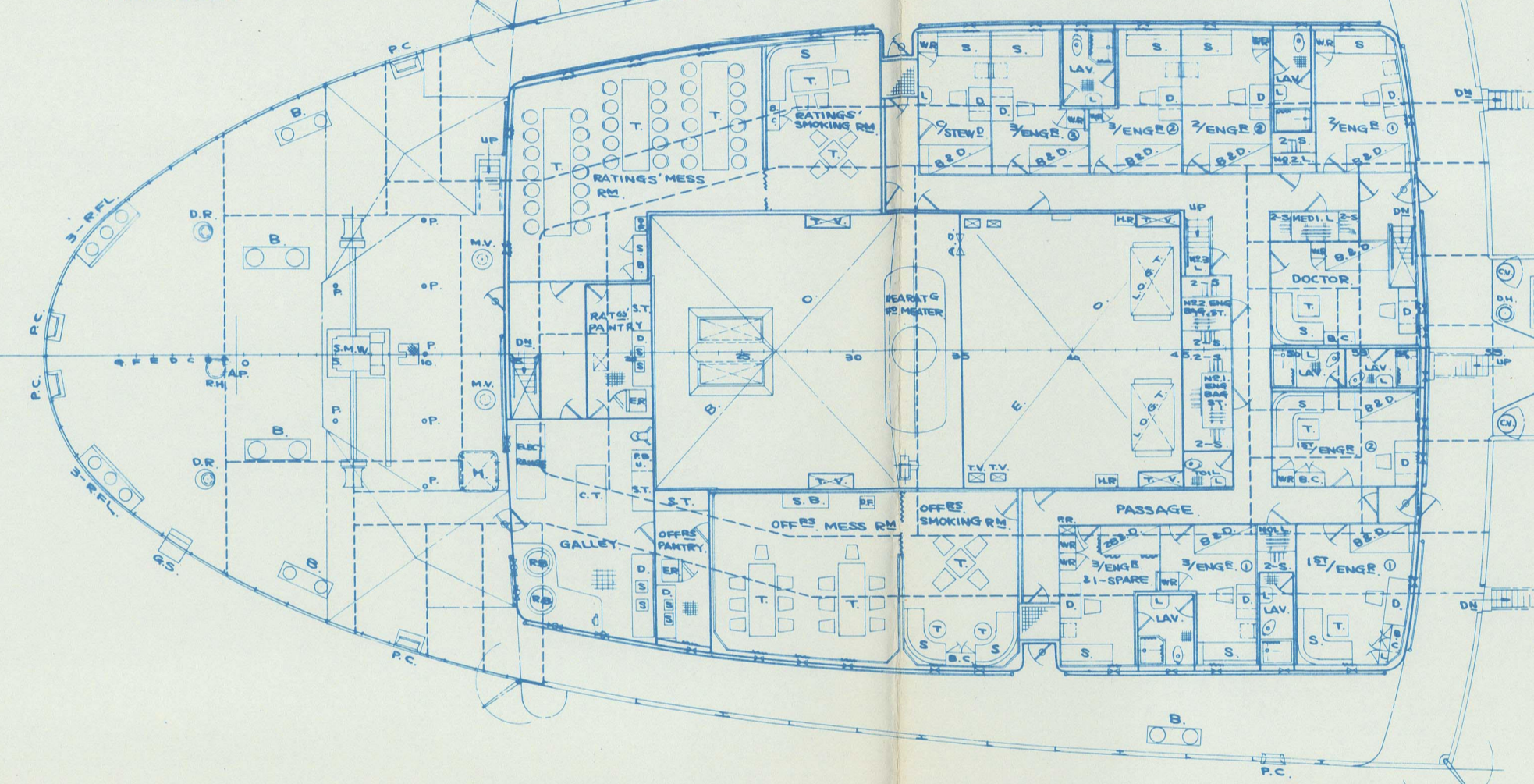
2ND DECK AND STORE FLAT



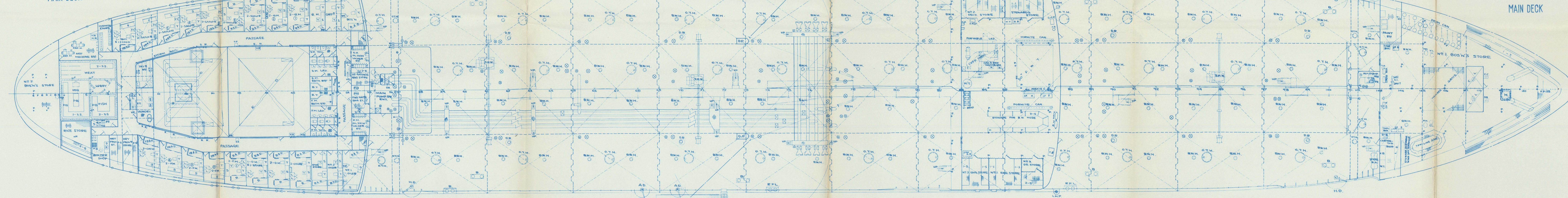
BOILER FLAT



POOP DECK

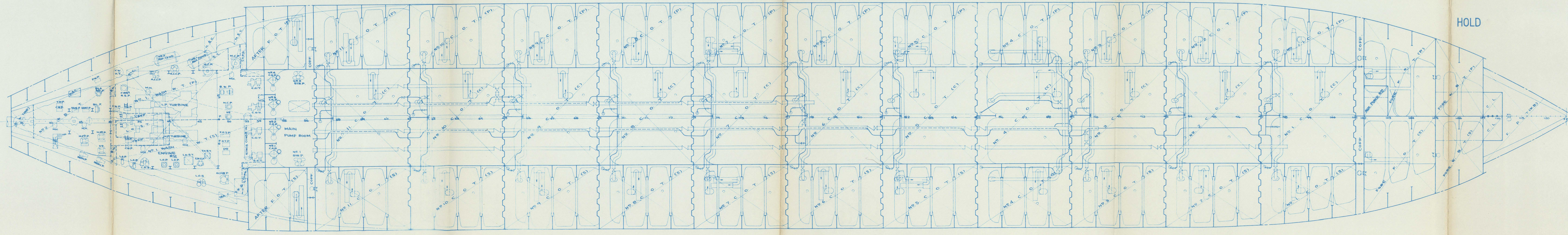


MAIN DECK

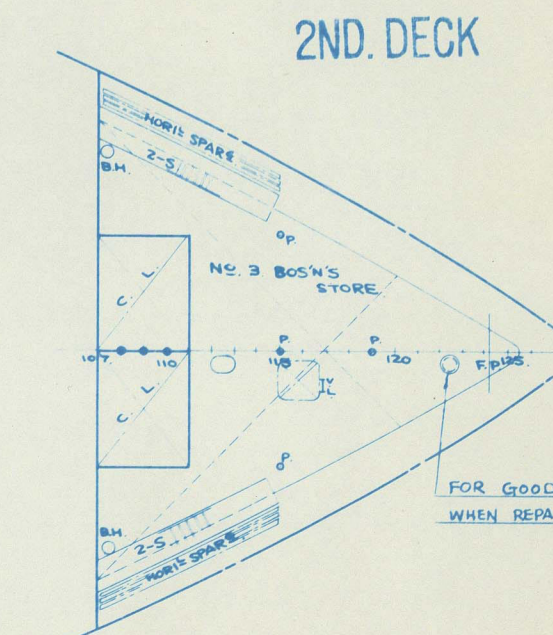


MAIN DECK

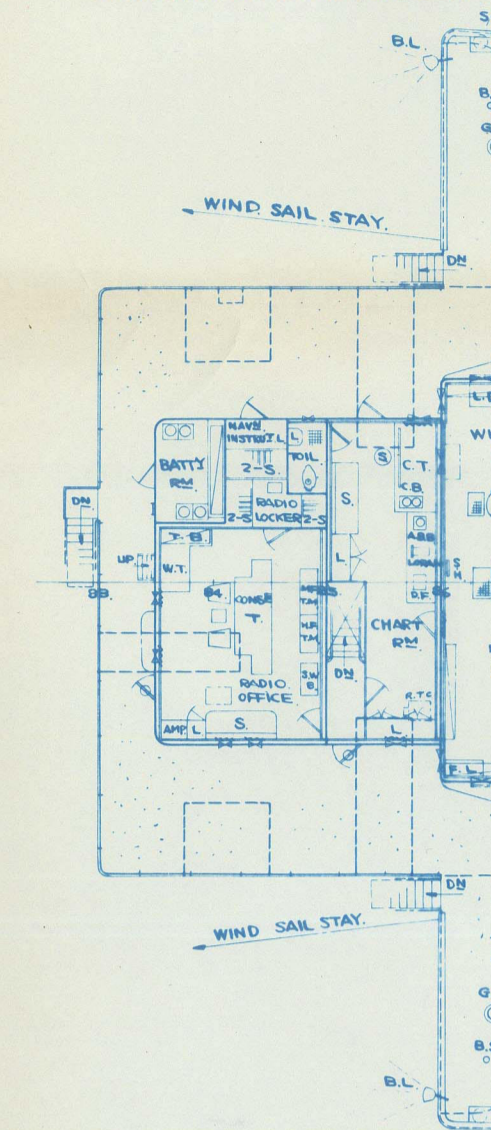
HOLD



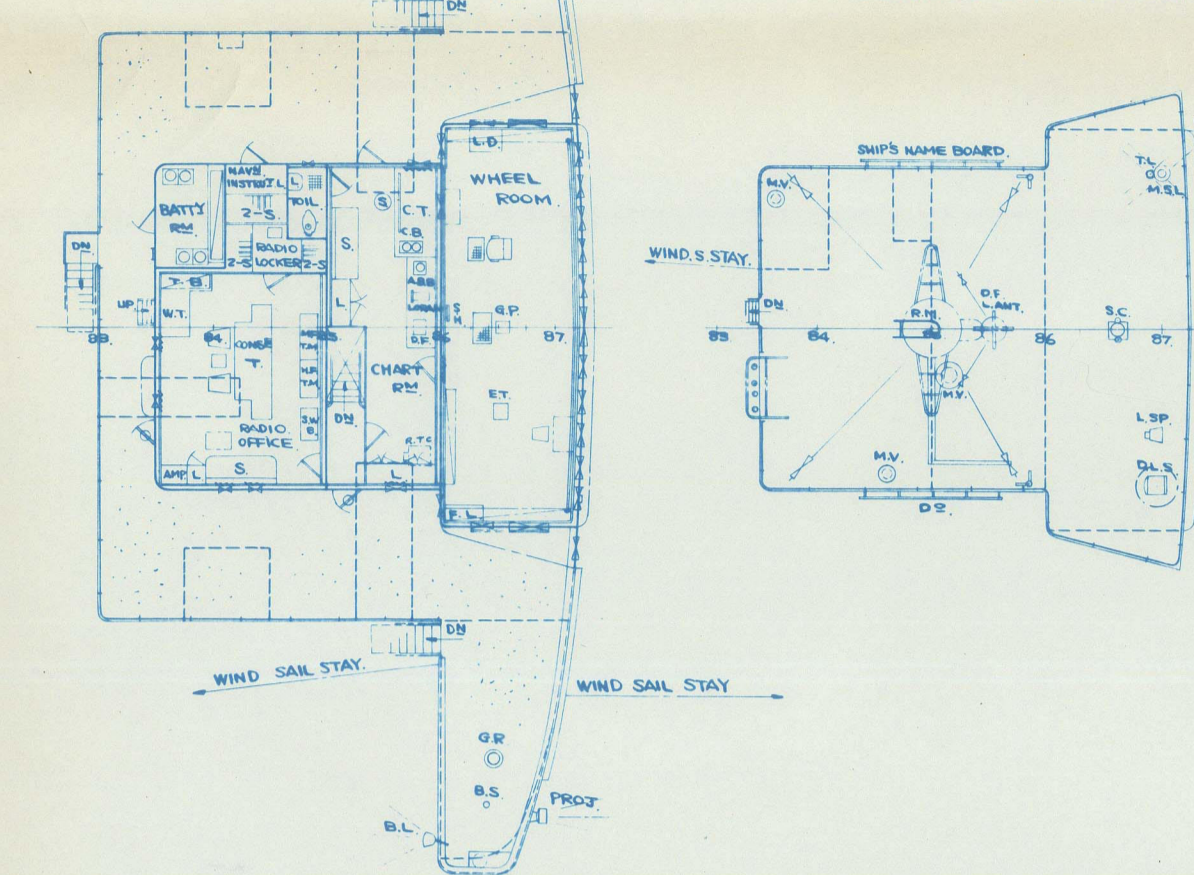
2ND DECK



NAVIGATION BRIDGE DECK



COMPASS BRIDGE DECK



PRINCIPAL PARTICULARS

L	P.P.	205'00 (62.57)
B	M.D.	28'20 (8.62)
D	M.D.	14'80 (4.56)
d	EXTREME	11'17

TONNAGE

G. T.	24,650.42
N. T.	16,278.80
D. W.	39,919.17

CLASSIFICATION

L. R. S. + 100 A1 "CARRYING PETROLEUM IN BULK"
AND + L.M.C.
N. K. K. K.S. "TANKER - OILS - F.P. BELOW 65°C"
AND N.S.V.

ENGINE AND BOILER

ENGINE :
1 SET OF KAWASAKI DOUBLE REDUCTION
GEARED TURBINE
MAX. CONTINUOUS OUTPUT 16,500 S.H.P.
R. P. M. 110 R.P.M.

BOILERS :-

2 SETS OF KAWASAKI TWO DRUM WATER TUBE
BOILER
TRIAL SPEED 17.756

COMPLEMENT

DECK DEP.	ENG. DEP.	PURSER DEP.	OTHERS.
CAPTAIN 1	CHIEF ENGINEER 1	PURSER 1	OWNER 2
CHIEF OFFICER 1	1ST ENGINEER 2	DOCTOR 1	PILOT 1
2ND OFFICER 2	2ND ENGINEER 2	CHIEF OPERATOR 1	
3RD OFFICER 2	3RD ENGINEER 4	2ND OPERATOR 1	
	SPARE 1	3RD OPERATOR 1	
	6	10	5
			3
BOATSWAIN 1	NO. 1 OILER 1	CHIEF STEWARD 1	
CARPENTER 1	NO. 2 OILER 1	BOY 3	
QUARTER MASTER 5	ENGINE ROOM HAND 1	COOK 3	
SAILOR 12	OILER 2		
	DOVEY MAN 3		
	FIRE MAN 3		
	SPARE 1		
	19	17	7
GRAND TOTAL 67 PERSONS			

FINISHED PLAN

GEKKO MARU

月 興 丸

TITLE

GENERAL ARRANGEMENT

SCALE 1/200 JOB NO.

KAWASAKI DOCKYARD CO. LTD.

KOBE JAPAN

SHIPDESIGNING DEPARTMENT

CHIEF OF DEPARTMENT P.P. J. J. J.

CHIEF OF SECTION S. J. J.

CHECKED BY: S. J. J.

DRAWN BY: S. J. J.

DATE: OCT 30 1954

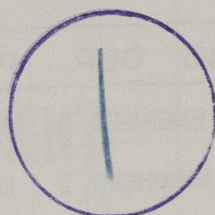
SECTION: NO. 1

DRAWING NO. 1-2

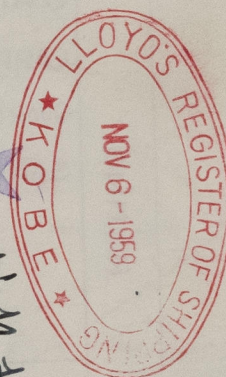
Register Foundation

1/

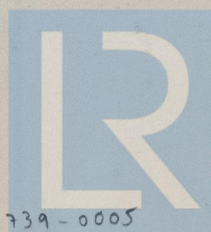
RECORDS DEPT.
LONDON.



Kobe Rpt. No.	FE 6715
Port of Survey.	K O B E
Name of Ship.	GEKKO MARU
Title of Plan.	GENERAL ARRANGEMENT



W. M. Hemmel



© 2021

Lloyd's Register
Foundation