

2 A.  
 No 658,659,660,662  
 MIDSHIP SECTION  
 SCALE 1/2" = 1 FOOT

MLD DIMENSIONS 410'-0" x 55'-0" x 37'-6" TO SHELTER DECK

CLASS 100 ALL LLOYDS WITH FREEBOARD CORRESPONDING TO THAT OF A COMPLETE SUPERSTRUCTURE VESSEL WITH TONNAGE OPENING

L x D	= 1:170
L x (B+D)	= 3:720
L/D	= 1:193
d	= 25.4
D	= 31.0

FRAME SPACING	
24" IN PEAKS	
27" FROM 1/4" FORWARD TO AFT BULKHEAD	
31 1/2" ELSEWHERE	

STEM BAR 10 x 2 1/2"	
STERN & RUDDER FRAME PER APPROVED PLAN	

EQUIPMENT NUMERAL	
L x (B+D) 410(55+37.5)	= 37925
FEEL 195 x 7.5 x 7.5	= 16.5
HOUSES 83-83 x 7.5 x 7.5	= 3.13
EQUIPMENT NO	= 38403

EQUIPMENT	
2 POWER ANCHORS (STOCKLESS)	68 CWT.
1 POWER ANCHOR (STOCKLESS)	58 1/2"
270 FMS. 2 1/2" STEEL WIRE CABLE	2 TAYCO STEEL 3/16"
90 FMS. 6" STEAM WIRE HAWSER WITH DOUBLE PURCHASE REEL	6 x 12 HAWSER QUALITY
120 FMS. 4 1/2" STEEL WIRE TOWLINE ON PATENT PURCHASE REEL	6 x 14 HAWSER QUALITY
2 90 FMS. 8" MANILLA	1/2" FLEX STEEL WIRE
2 90 7' 4" 1/2" FLEX STEEL WIRE	

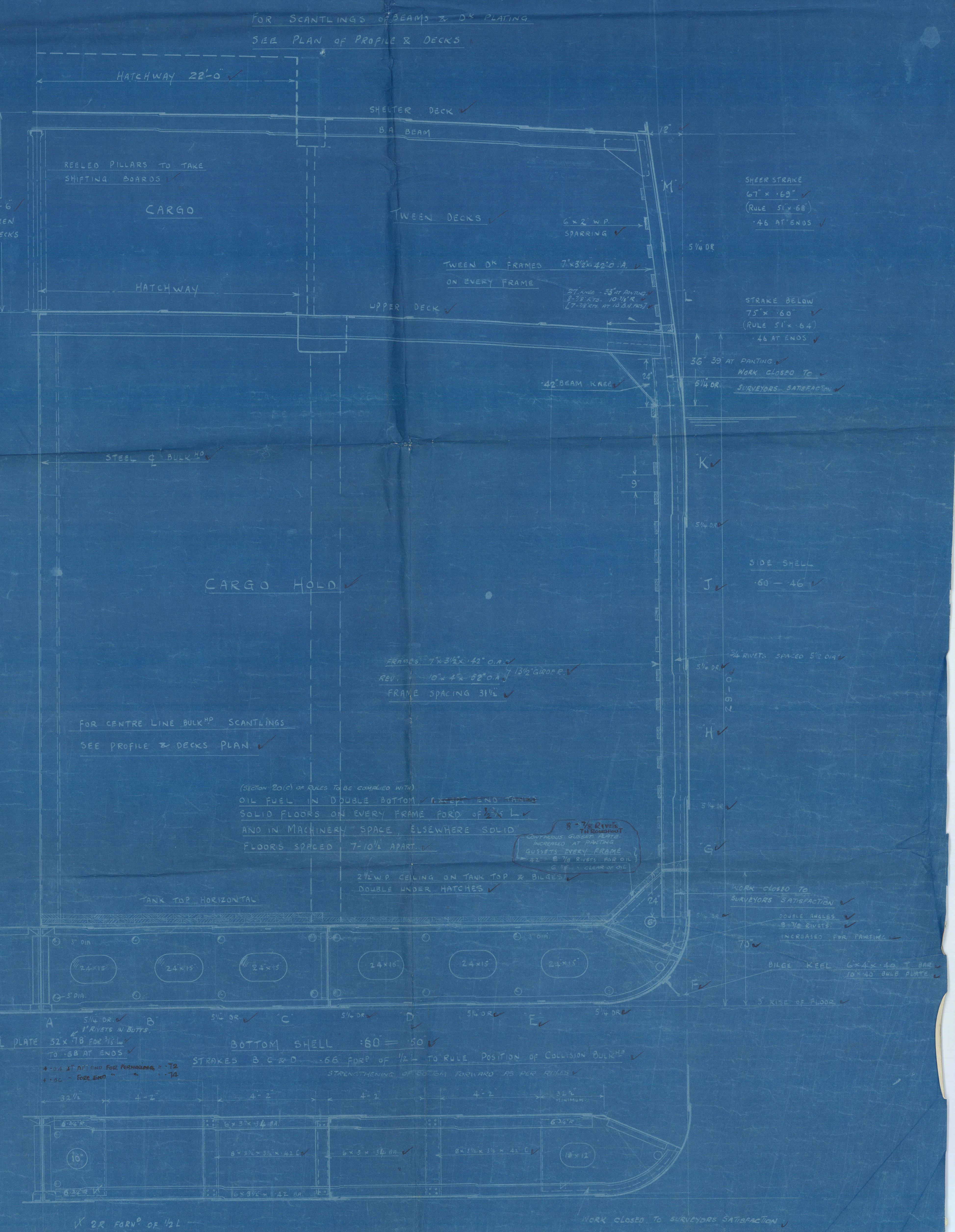
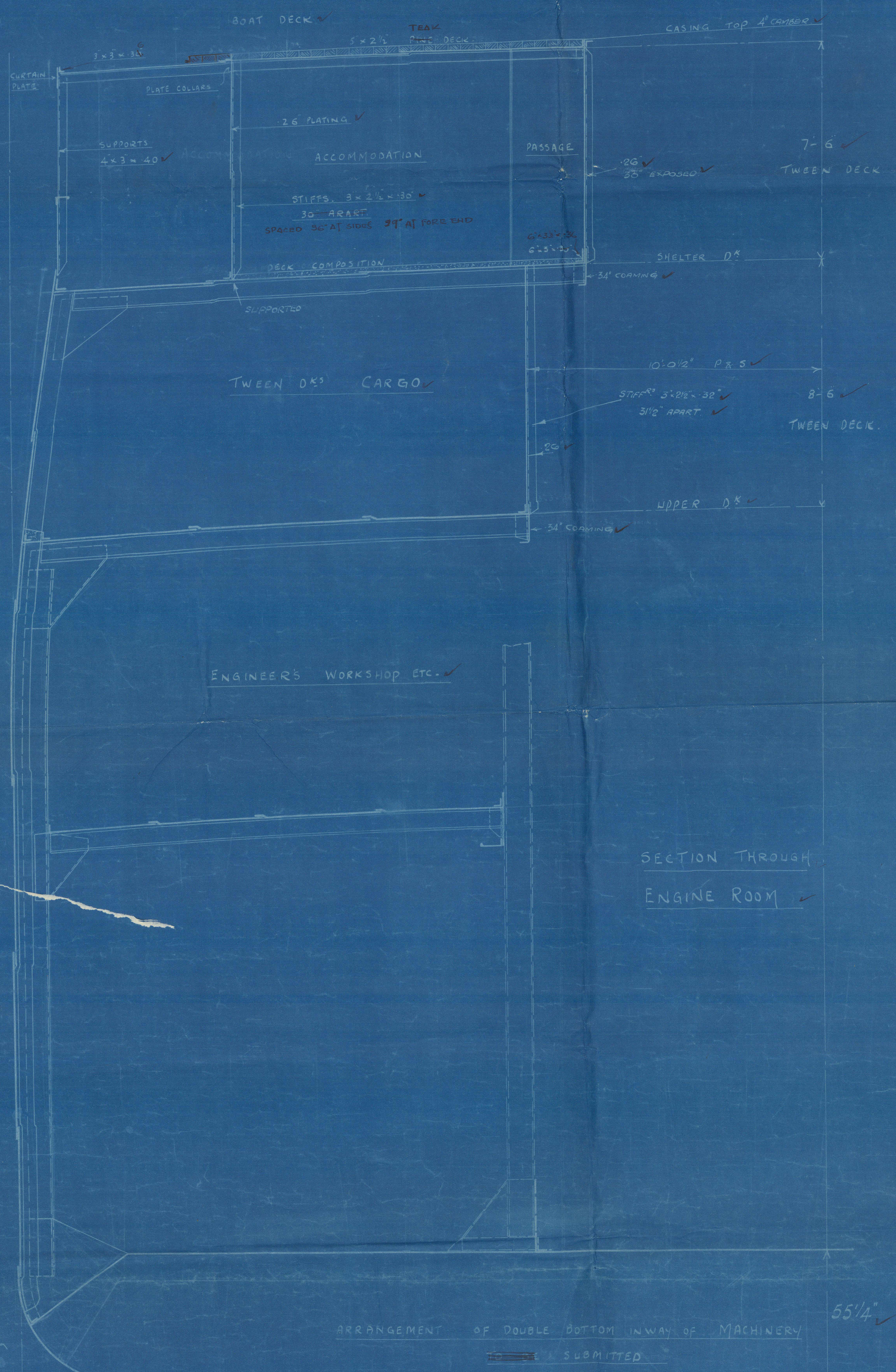
DOUBLE BOTTOM SCANTLING CLEAR OF MOTOR ROOM

ITEM	RULE	AS FITTED	AT ENDS	REMARKS
CENTRE GIRDER	43 1/2" x 14	43 1/2" x 14	43 1/2" x 14	2 1/2" IN NO. 6 HOLD
" 8TH BARS	4 1/2" x 5 1/2"	4 1/2" x 5 1/2"	4 1/2" x 5 1/2"	DOUBLE THROUGHOUT
" TOP BARS	3 1/2" x 4 1/2"	3 1/2" x 4 1/2"	3 1/2" x 4 1/2"	
" VERT BARS	3 1/2" x 4 1/2"	3 1/2" x 4 1/2"	3 1/2" x 4 1/2"	
SIDE GIRDERS	3 1/2" x 4 1/2"	3 1/2" x 4 1/2"	3 1/2" x 4 1/2"	
" 8TH BARS	3 1/2" x 4 1/2"	3 1/2" x 4 1/2"	3 1/2" x 4 1/2"	
" TOP BARS	3 1/2" x 4 1/2"	3 1/2" x 4 1/2"	3 1/2" x 4 1/2"	
" VERT BARS	3 1/2" x 4 1/2"	3 1/2" x 4 1/2"	3 1/2" x 4 1/2"	
SOLID FLOORS	42	42	42	N. FLOORS - 50" STIFFENED
BOTTOM FRAMES	3 1/2" x 4 1/2"	3 1/2" x 4 1/2"	3 1/2" x 4 1/2"	DOUBLE FORWARD OF 1/2" BULKHEAD
" REVERSE FRAMES	3 1/2" x 4 1/2"	3 1/2" x 4 1/2"	3 1/2" x 4 1/2"	
BRACKET FLOORS AFT	42	42	42	
" 8TH BARS	4 1/2" x 5 1/2"	4 1/2" x 5 1/2"	4 1/2" x 5 1/2"	
" REVERSE BARS	4 1/2" x 5 1/2"	4 1/2" x 5 1/2"	4 1/2" x 5 1/2"	
" VERT STAIRS	4 1/2" x 5 1/2"	4 1/2" x 5 1/2"	4 1/2" x 5 1/2"	
" 8TH BARS	4 1/2" x 5 1/2"	4 1/2" x 5 1/2"	4 1/2" x 5 1/2"	
TANK MARGIN	40 1/2" x 5 1/2"	40 1/2" x 5 1/2"	40 1/2" x 5 1/2"	
" SHELL BAR	3 1/2" x 4 1/2"	3 1/2" x 4 1/2"	3 1/2" x 4 1/2"	
" VERT OUTSIDE	3 1/2" x 4 1/2"	3 1/2" x 4 1/2"	3 1/2" x 4 1/2"	DOUBLE
" " INSIDE	3 1/2" x 4 1/2"	3 1/2" x 4 1/2"	3 1/2" x 4 1/2"	SINGLE
WING BRACKETS	70 x 40	70 x 40	70 x 40	
TANK TOP & STRAKE	53 1/2" x 5 1/2"	53 1/2" x 5 1/2"	53 1/2" x 5 1/2"	
" PLATING	42	42	42	

RIVETING			
ITEM	END LAPS	EDGE LAPS	
KEEL	4	3	2
SHELL BOTTOM	3	3	2
" SIDE	3	3	2
SHEER STRAKE	4	3	2
STRAKE BELOW	3	3	2
CENTRE GIRDER	3	3	2
MARGIN	3	3	2
TOP CENTRAL STRAKE	3	3	2
TOP PLATING	3	3	2
UPPER 1/2" STRINGER	3	3	2
" PLATING	3	3	2
SHELTER DECK STRINGER	3	3	2
" PLATING	3	3	2

SPACING OF RIVETS IN DOUBLE BOTTOM			
FRAMES - RIVETS IN BOTH PLATES	SPACED 7 DIAS. OR 7/16"		
FRAMES - RIVETS IN BOTH PLATES	SPACED 5 DIAS. OR 5/16"		
FRAMES - RIVETS IN BOTH PLATES	SPACED 3 DIAS. OR 3/16"		
FRAMES - RIVETS IN BOTH PLATES	SPACED 2 DIAS. OR 1/8"		
FRAMES - RIVETS IN BOTH PLATES	SPACED 1 1/2" OR 1/4"		
FRAMES - RIVETS IN BOTH PLATES	SPACED 1 1/4" OR 3/8"		
FRAMES - RIVETS IN BOTH PLATES	SPACED 1 1/8" OR 5/16"		
FRAMES - RIVETS IN BOTH PLATES	SPACED 1 1/4" OR 3/8"		
FRAMES - RIVETS IN BOTH PLATES	SPACED 1 1/8" OR 5/16"		
FRAMES - RIVETS IN BOTH PLATES	SPACED 1 1/4" OR 3/8"		

SPACING OF RIVETS IN SIDE FRAMES			
SIDE FRAMES TO SHELL	SPACED 5 DIAS. OR 5/16"		
SIDE FRAMES TO SHELL	SPACED 3 DIAS. OR 3/16"		
SIDE FRAMES TO SHELL	SPACED 2 DIAS. OR 1/8"		
SIDE FRAMES TO SHELL	SPACED 1 1/2" OR 1/4"		
SIDE FRAMES TO SHELL	SPACED 1 1/4" OR 3/8"		
SIDE FRAMES TO SHELL	SPACED 1 1/8" OR 5/16"		
SIDE FRAMES TO SHELL	SPACED 1 1/4" OR 3/8"		
SIDE FRAMES TO SHELL	SPACED 1 1/8" OR 5/16"		
SIDE FRAMES TO SHELL	SPACED 1 1/4" OR 3/8"		
SIDE FRAMES TO SHELL	SPACED 1 1/8" OR 5/16"		





Mrs Barclay Cule's N<sup>o</sup>. 658.

Queen Adelaide"

—  
Miasht Section (as Built.)  
—



© 2021

Lloyd's Register  
Foundation

013651-013655-0301