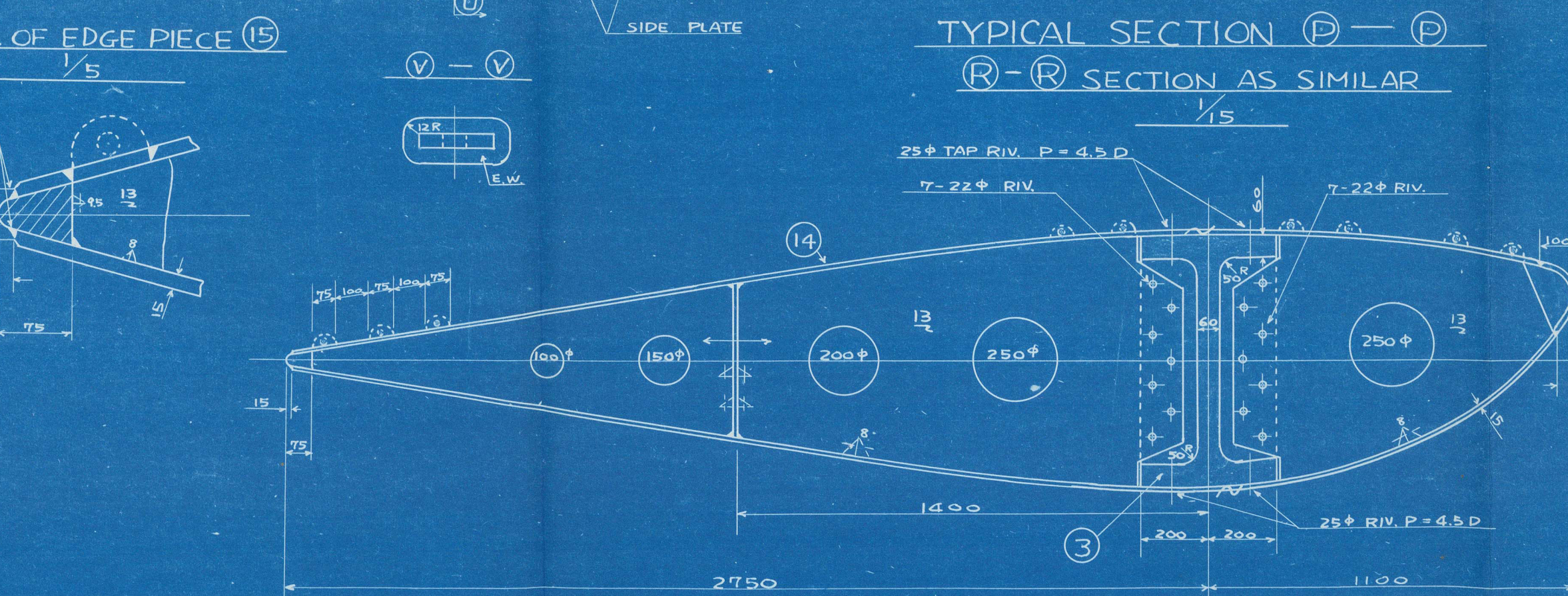
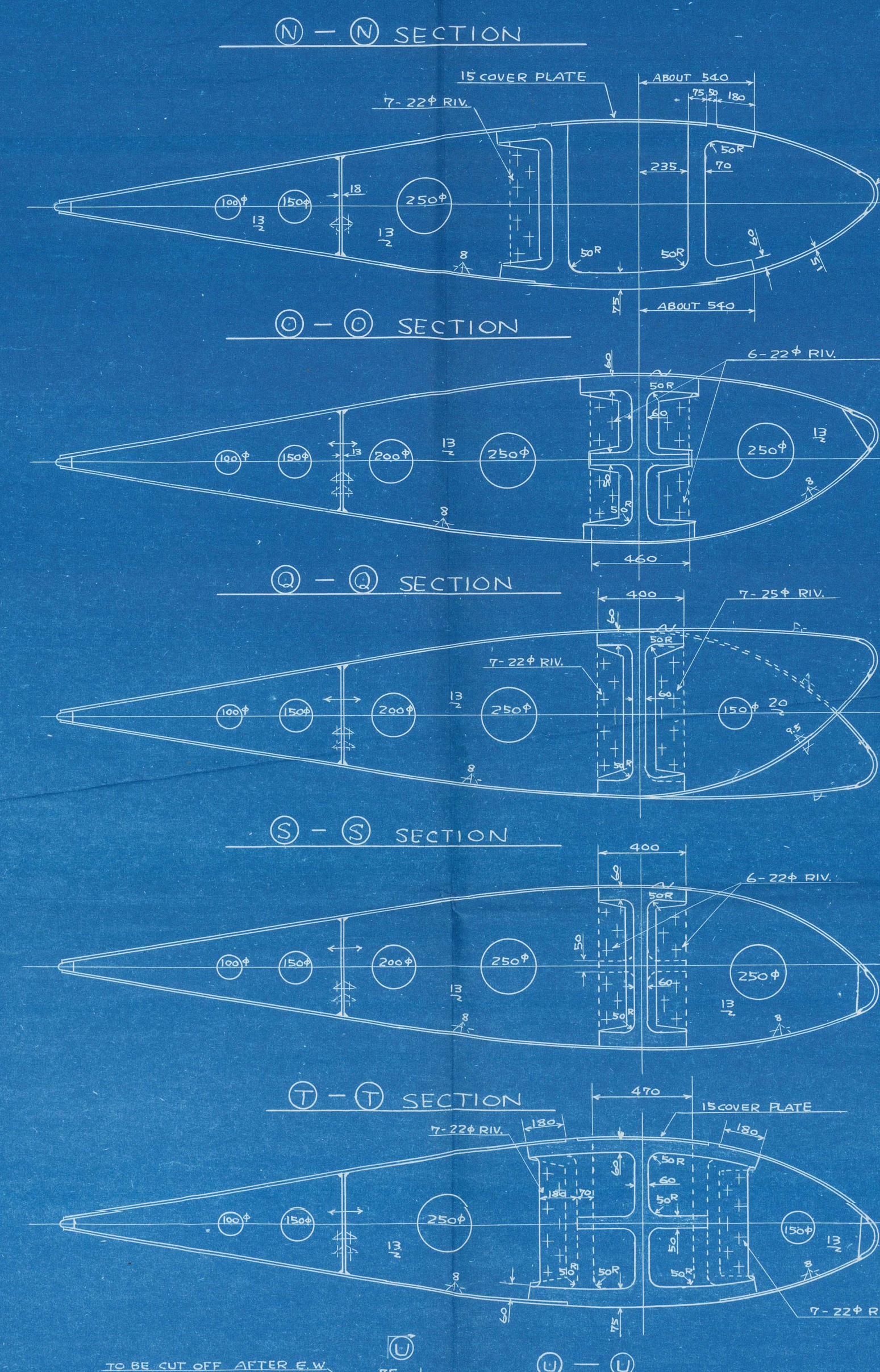
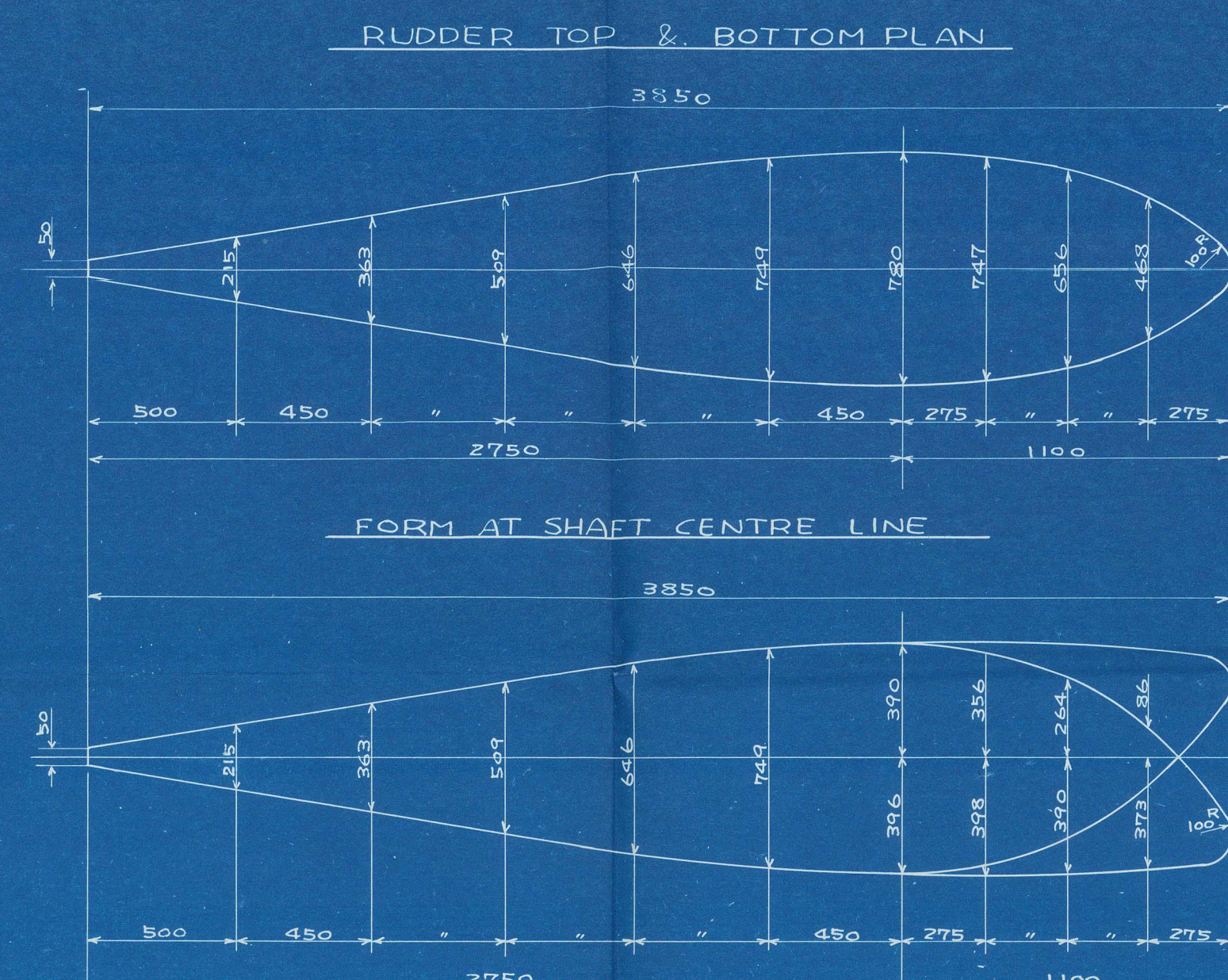
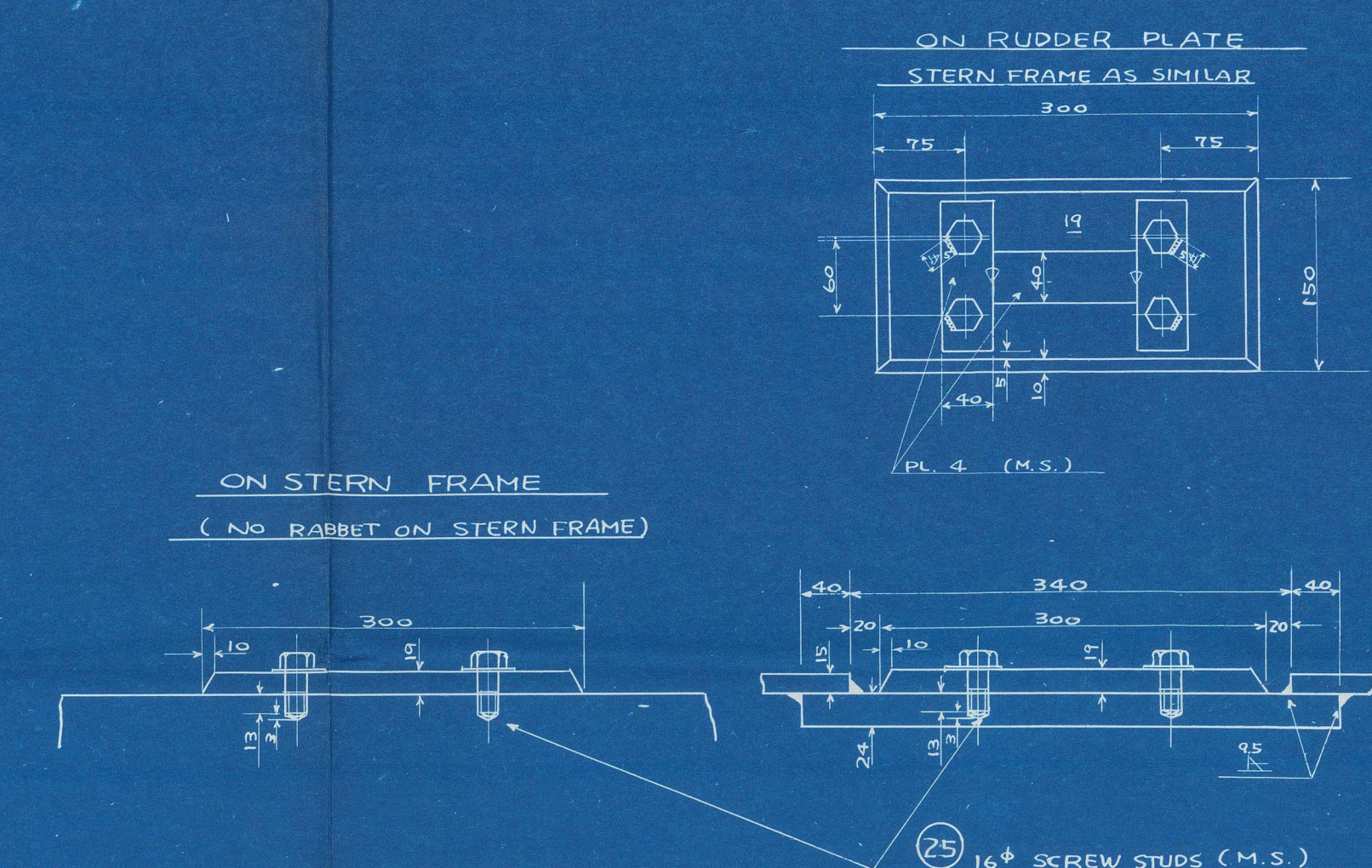


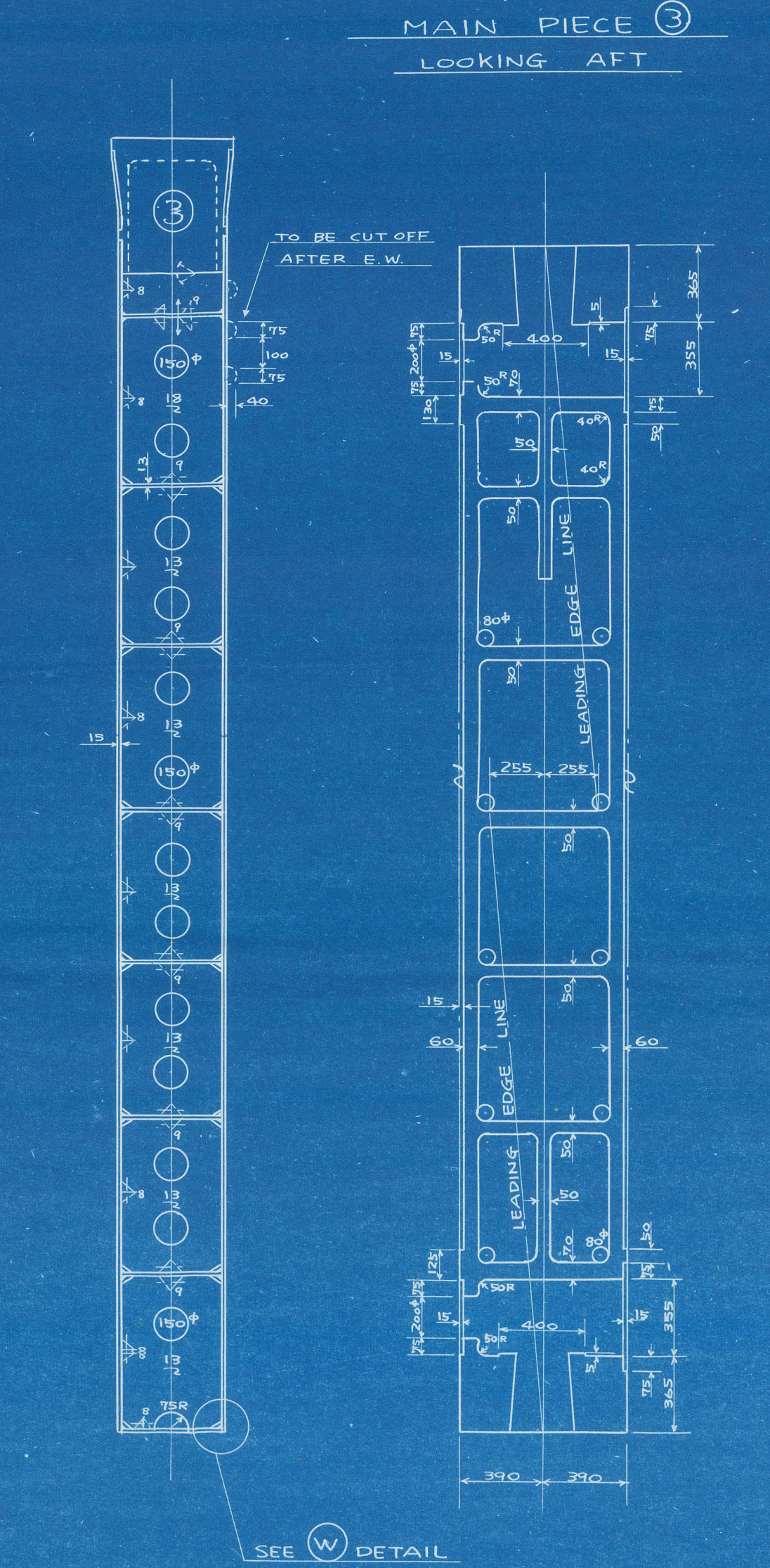
# SECTIONAL FORM OF RUDDER SHOWING OUTSIDE OF RUDDER PLATE



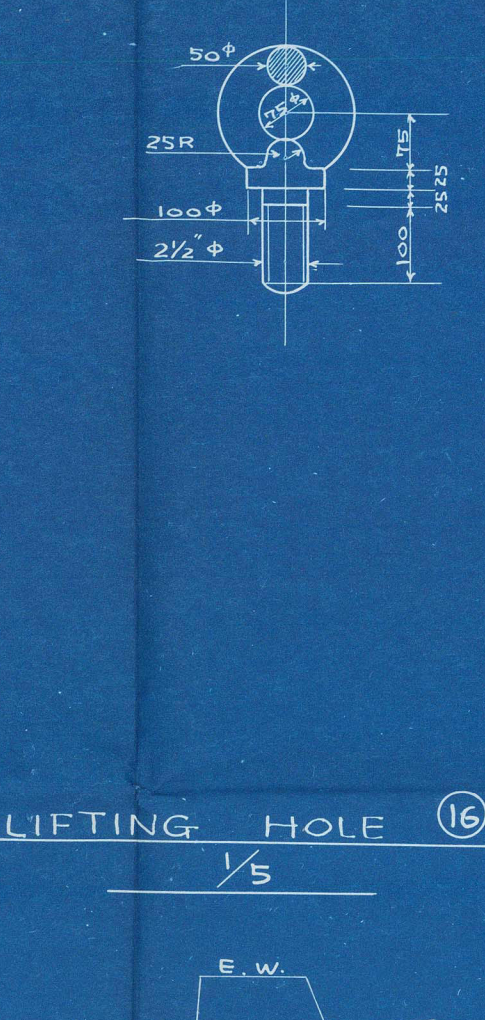
## DETAIL OF ZINC PLATE



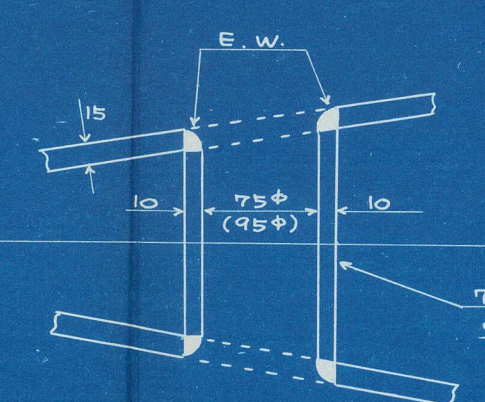
## INTERCOSTAL VERTICAL WEB



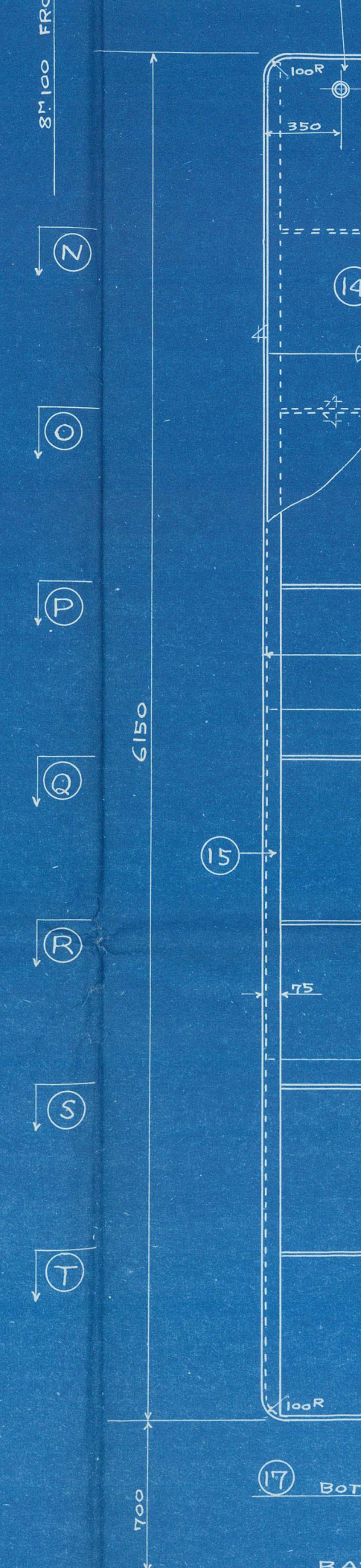
## EYE BOLT



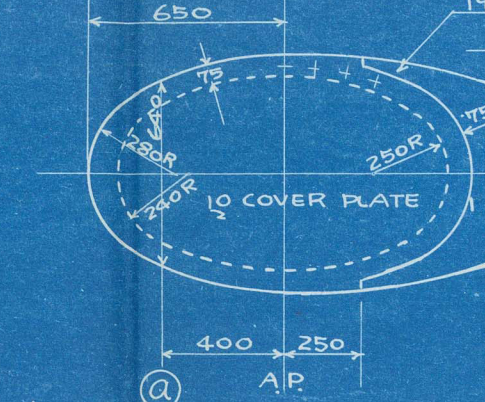
## LIFTING HOLE



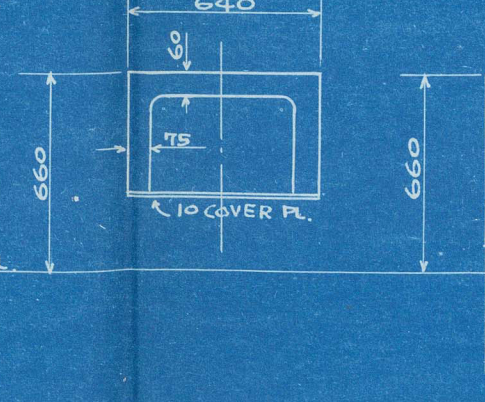
## MAIN PIECE



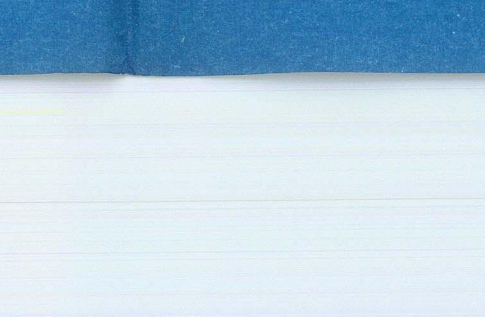
## FR 1/2 SECTION



## FR 2 SECTION



## FR 3 SECTION



## FR 4 SECTION



## FR 5 SECTION



## FR 6 SECTION



## FR 7 SECTION



## FR 8 SECTION



## FR 9 SECTION



## FR 10 SECTION



## FR 11 SECTION



## FR 12 SECTION



## FR 13 SECTION



## FR 14 SECTION



## FR 15 SECTION



## FR 16 SECTION



## FR 17 SECTION



## FR 18 SECTION



## FR 19 SECTION



## FR 20 SECTION



## FR 21 SECTION



## FR 22 SECTION



## FR 23 SECTION



## FR 24 SECTION



## FR 25 SECTION



## FR 26 SECTION



## FR 27 SECTION



## FR 28 SECTION



## FR 29 SECTION



## FR 30 SECTION



## FR 31 SECTION



## FR 32 SECTION



## FR 33 SECTION



## FR 34 SECTION



## FR 35 SECTION



## FR 36 SECTION



## FR 37 SECTION



## FR 38 SECTION



## FR 39 SECTION



## FR 40 SECTION



## FR 41 SECTION



## FR 42 SECTION



## FR 43 SECTION



## FR 44 SECTION



## FR 45 SECTION



## FR 46 SECTION



## FR 47 SECTION



## FR 48 SECTION



## FR 49 SECTION



## FR 50 SECTION



## FR 51 SECTION



## FR 52 SECTION



## FR 53 SECTION



## FR 54 SECTION



## FR 55 SECTION



## FR 56 SECTION



## FR 57 SECTION



## FR 58 SECTION



## FR 59 SECTION



## FR 60 SECTION



## FR 61 SECTION



## FR 62 SECTION



## FR 63 SECTION



## FR 64 SECTION



## FR 65 SECTION



## FR 66 SECTION



## FR 67 SECTION



## FR 68 SECTION



## FR 69 SECTION



## FR 70 SECTION



## FR 71 SECTION



## FR 72 SECTION



## FR 73 SECTION



## FR 74 SECTION



## FR 75 SECTION



## FR 76 SECTION



## FR 77 SECTION



## FR 78 SECTION



## FR 79 SECTION



## FR 80 SECTION





013639-013642-0220

RECORDS DEPT.  
LONDON



★ DAIKYO MARU

Rudder + stern frame  
(Gunskeel)

Kobe F.E. Rpt No. 1691



© 2021

Lloyd's Register  
Foundation