

# Lloyd's Register of Shipping.

## SURVEYS FOR FREEBOARD.

(CONDITIONS OF ASSIGNMENT.)

Index No. 36669  
(For London Office only).

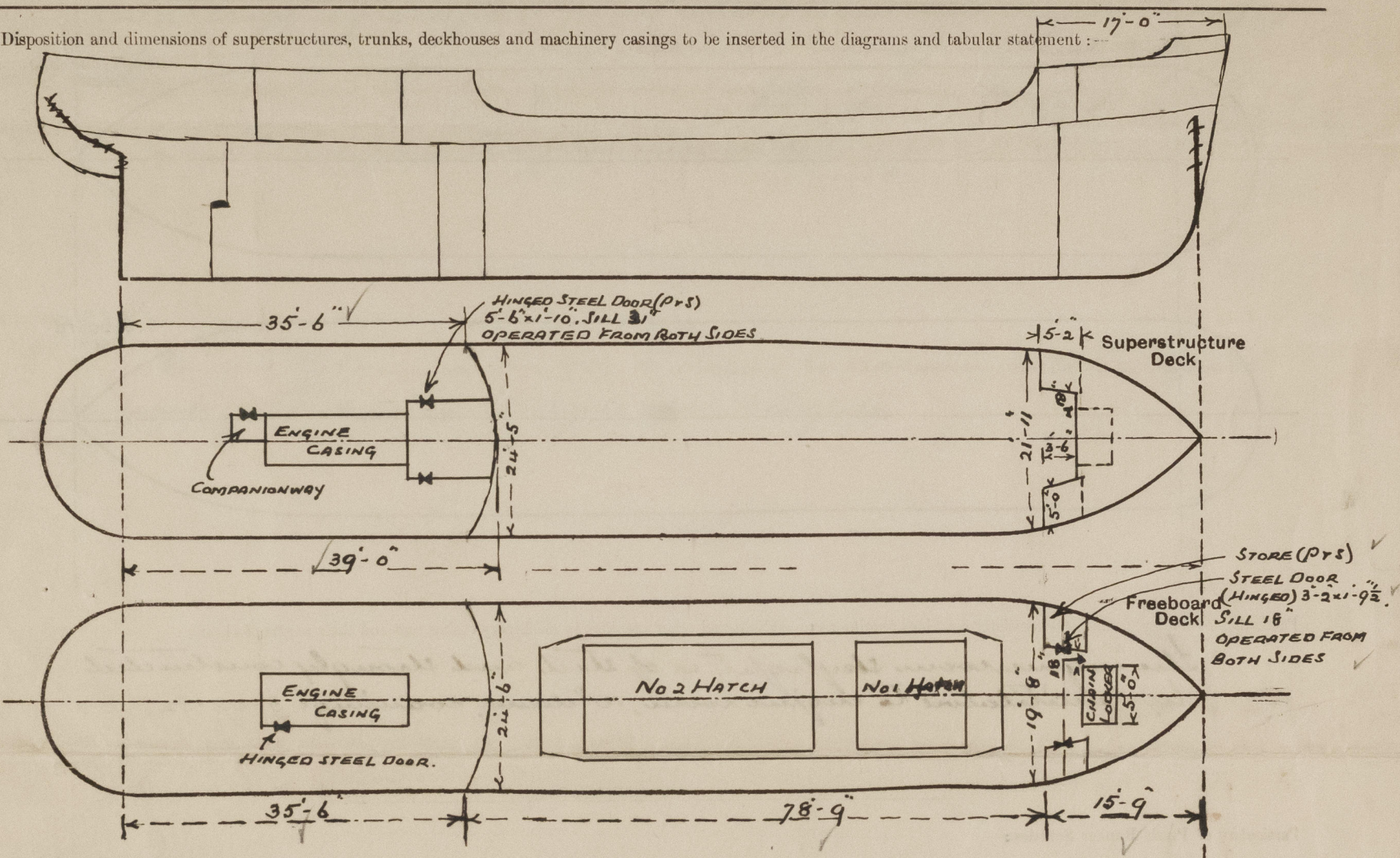
16 OCT 1941

Gms. Rpt. No. 21403.

Ship's Name *'EMPIRE RIVER'*  
Official Number *167109*  
Nationality and Port of Registry *British.*

Port of Survey *Grimsey*  
Surveyor's Signature *F. J. Palmer*  
Date of Survey *12/6, 5/8 & 7/10/41.*

Disposition and dimensions of superstructures, trunks, deckhouses and machinery casings to be inserted in the diagrams and tabular statement:



Particulars of Superstructures, Trunks, Casings, Deckhouses.

	Coaming	Plating	Stiffeners	Spacing	End Attachments of Stiffeners	Size of Openings	Height of Sills	Height of Casings
Poop Bulkhead ... ..	.30	.30	6 x 3 x 3/8 a	2'-6"	6" x 6" angle	none	✓	6'-8" ✓
Raised Quarter Deck Bulkhead ...	—	—	—	—	—	—	—	—
Bridge, After Bulkhead ... ..	—	—	—	—	—	—	—	—
Bridge, Forward Bulkhead ... ..	—	—	—	—	—	—	—	—
Forecastle Bulkhead ... <i>open</i>	—	—	—	—	—	—	—	5'-0" ✓
Trunk, Aft ... ..	—	—	—	—	—	—	—	—
Trunk, Forward ... ..	—	—	—	—	—	—	—	—
Exposed Machinery Casings on Freeboard or Raised Quarter Decks ...	—	—	—	—	—	—	—	—
Exposed Machinery Casings on Superstructure Decks ... ..	12" x .25	✓	3 x 2 1/2 x .26	2'-4" @ 2'-6"	brackets at top	none	—	12" ✓
Machinery Casings within Superstructures not fitted with Class I Closing Appliances ... ..	18" x .30	.25	3 x 2 1/2 x .26	2'-4" @ 2'-6"	✓	5'-0" x 1'-9"	9"	6'-8" ✓
Deckhouses on Flush Deck Ships ...	—	—	—	—	—	—	—	—

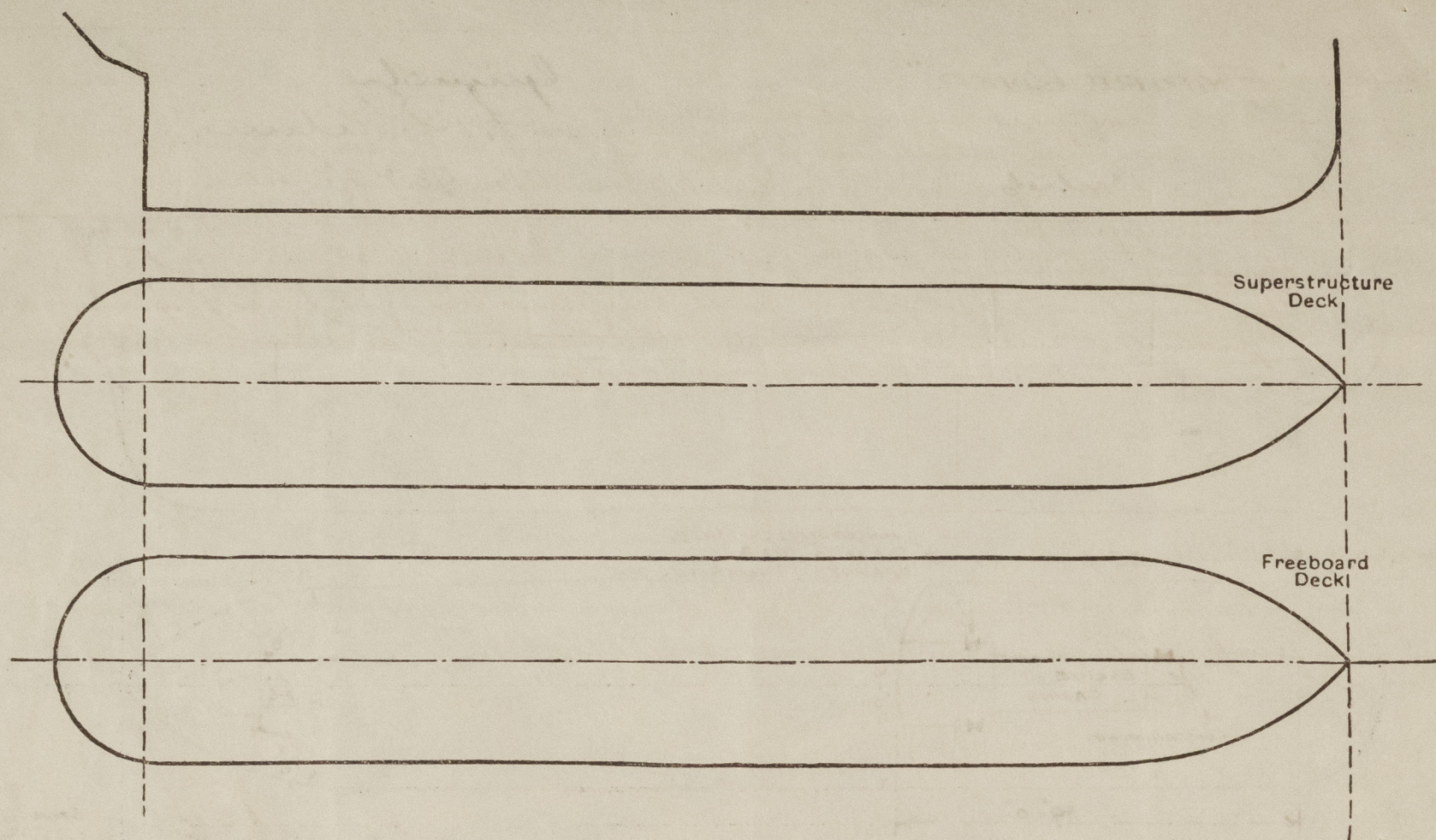
Particulars of Closing Appliances (state if capable of being manipulated from both sides).

Poop Bulkhead ... ..	<i>no openings</i> ✓
Raised Quarter Deck Bulkhead ...	✓
Bridge, After Bulkhead ... ..	✓
Bridge, Forward Bulkhead ... ..	✓
Forecastle Bulkhead ... ..	<i>open</i> ✓
Exposed Machinery Casings on Freeboard or Raised Quarter Decks ...	✓
Exposed Machinery Casings on Superstructure Decks ... ..	<i>no openings</i> ✓
Machinery Casings within Superstructures not fitted with Class I Closing Appliances ... ..	<i>One Mechanic Self Closing (Gas-tight) steel door (PYS) 5'-0" x 1'-9", Sill 9" operated from both sides.</i> ✓
Deckhouses on Flush Deck Ships ...	✓



# PARTICULARS OF PROTECTION TO OPENINGS, ETC.

The following diagrams should be used to indicate the positions of cargo and coaling hatchways, gangway, cargo and coaling ports, ventilators, companionways, etc., which would affect the seaworthiness of the ship:—



Particulars of fiddle, funnel and ventilator coamings, engine room skylight and other openings in machinery casing tops and their means of closing:—

The engine room skylight is of steel and strongly constructed. Two ventilators to engine room, 10" diam. coaming 3'-0" x 32".

Particulars of Flush Bunker Scuttles:—

None.

Particulars of Companionways:—

One on poop deck (3'-3" x 2'-11" x 6'-0") (p.c.) of steel strongly constructed, steel door (5'-0" x 2'-0") with 18" operated from both sides.

Particulars of Ventilators in exposed positions on freeboard and superstructure decks:—

Two ventilators on freeboard deck 10" diam. coaming 36" x 32" led to hold. Two " " " " " " " " 36" x 34" " " accommodation space.

All ventilators are constructed in accordance with the Rules and provided with wood plugs and canvas cover.

Particulars of Air Pipes in exposed positions on freeboard, raised quarter, or superstructure decks:—

One C.I. air pipe on freeboard deck 3'-0" high x 2 1/2" diam from fore peak tank. One " " " " " " " " 2'-0" " x 2 1/2" " " after " " Wood plugs with chain attachments are provided for closing the openings.

EMPIRE RIVER

Particulars of Gangway Cargo and Coaling Ports:—

None.

Particulars of Scuppers and Sanitary Discharge Pipes:—

4 - 6" x 3" scuppers in well each side. 1 - 4" sanitary discharge pipe (p.c.s) from W.C. in poop space, opening through sides of vessel 3'-0" below freeboard deck. 3 - 1 1/2" scupper pipes (p.c.s) from Wash Basins and Showers in poop space opening through sides of vessel 3'-0" below freeboard deck. The sanitary discharges and scuppers from the poop space are provided with screw-down, automatic, non-return valves (guaranteed) controlled from the freeboard deck.

Particulars of Side Scuttles:—

Eight (p.c.) and six (s.s.) 10" diam to accommodation space in poop, fitted with hinged deadlights.

Vertical distance of Sill of lowest Side Scuttle above top of keel

Particulars of Guard Rails:—

Fitted round forecastle and poop.

Particulars of Gangways, Lifelines, etc.:—

Lifelines fitted from poop to forecastle in well (p.c.s).

Particulars of Freeing Arrangements.						
	Length of Bulwark	Height of Bulwark	Size of Freeing Ports	Number each side	Area each side	Rule area each side
After Well ...	78'-9"	3'-3"	2'-6" x 1'-7 1/2"	4	16.20 sq ft	15.75 sq ft
Forward Well ...	—	—	—	—	—	—
State position of each freeing port ... (F. and A. position and height above deck edge)						
After Well:— 7'-9", 24'-0", 39'-6" and 60'-0" from poop pent to after end of each opening: 7" above deck.						
Forward Well:—						
State whether the freeing ports are fitted with shutters, bars, or rails, and give particulars of such:—						
Dinged steel shutters with bars						
Additional area where sheer is less than standard.						



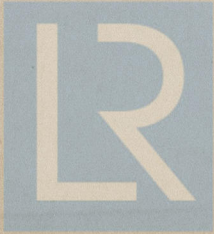
PARTICULARS OF PROTECTION TO OPENINGS, ETC.

HATCHWAYS ON FREEBOARD AND SUPERSTRUCTURE DECKS:									
Description of Hatchway		No 1	No 2						
Dimensions of Hatchway		20'-2" x 36'-0"	16'-6" x 16'-6"						
COAMINGS	Height above Deck	36" FE. 4" GA. 48" FE. 53" AE.							
	Thickness	.38	.38						
	Stiffeners	Sloped Coaming							
	Brackets, Stays	Angle 4" x 3" x .38 2" x 3" x .30 framing 2 bar on inside, spaced abt 7'-0" apart.							
HATCH BEAMS	Number	4	8						
	Spacing	4'-0"	4'-0"						
	Scantling and Sketch	3 x 3 x .42 12 x 50							
	Bearing Surface	3	3						
FORE AND AFTERS	Number								
	Spacing								
	Unsupported Lengths								
	Scantling* and Sketch	None	None						
HATCH COVERS	Material	Wood	Wood						
	Thickness	2 1/2"	2 1/2"						
	How fitted	tea	tea						
	Bearing Surface	3"	3"						
Spacing of Cleats		24"	24"						
Number of Tarpaulins		2	2						
*Are wood fore and afters steel shod at all bearing surfaces? <input checked="" type="checkbox"/>									
Are battens and wedges efficient and in good condition? <input checked="" type="checkbox"/>									
Are tarpaulins in good condition and in accordance with rule requirements? <input checked="" type="checkbox"/>									
Are lashings provided in accordance with rule requirements? <input checked="" type="checkbox"/> <i>yes; fittings provided for extra lashings.</i>									

Particulars of any special features:—

Endorsement at first survey and at surveys for renewal of Certificate:—

The fittings and appliances are in accordance with the particulars shown on this form (or as now modified) and are in good condition.



© 2021

Lloyd's Register Foundation