

S.O. 798.

S.S. "ORMARA."

CONVERSION TO OIL BURNING.

SCALE:  $\frac{1}{4}$ "=ONE FOOT.

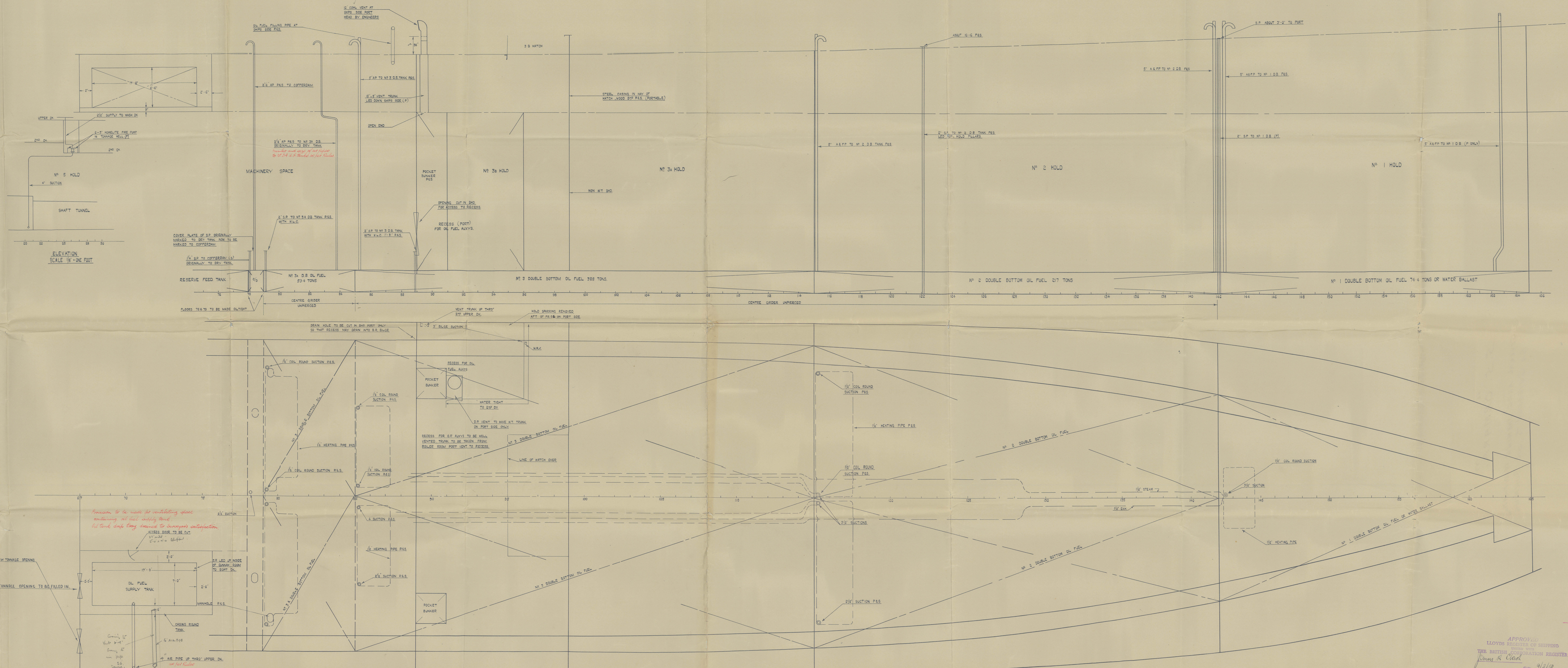
#### SHIPBUILDERS.

CONSTRUCT RECESS FOR OIL FUEL AUX<sup>Y</sup> & CUT OPENING IN B<sup>Y</sup> 83 FOR ACCESS TO RECESS ALSO DRAIN HOLE IN B<sup>Y</sup> 88 SUPPLY & FIT TO EXIST<sup>Y</sup> 2ND DECK FOR OIL FUEL AUX<sup>Y</sup> CONSTRUCT & FIT OIL FUEL TANK IN TWEEN DECK ALSO SEATING FOR SAME CONTINUOUS WELDING AROUND OIL SEAMS OF INNER BOTTOM PLATING IN WAY OF N<sup>Y</sup> 1, 2, 3, 3A DOUBLE BOTTOM TANKS WELDING ON TOP EDGE OF SUBSET PLATE TO FUEL OF TAIL BRACKET FLOOR 79 TO 80 MAKE OUTRIGHT 1 TON DUTY BT FR 80 CUT HANDLES IN TANK TOP P.S. TO N<sup>Y</sup> 2A O.B. TANK SUPPLY COVER WITH DECKING JOINTING CONTRACT CASING ROUND OIL FUEL SUPPLY TANK SHIT TONNAGE OPENING ON STEEL SHEET FIT DOOR IN EN<sup>Y</sup> CASING FOR ACCESS TO O.F. TANK IN TWEEN DECKS WIRE MEAN GAUGE EASILY REMOVED FOR CLEANING AT OPENINGS OF AIR PIPES WHERE THESE WENT OIL FUEL O.B. TANKS REMOVE EXISTING  $\frac{1}{4}$ " DIA SOUNDING PIPES & REPLACE WITH 2" S.P. FOR OIL FUEL O.B. TANKS SUPPLY & FIT HEATING COILS & PIPING IN DOUBLE BOTTOM EXTEND BRASS SECTION TO N<sup>Y</sup> 3 BRIDGE TO FURNACE SIDE OF B<sup>Y</sup> 84 ON FR 85 SUPPLY & FIT AIR PIPES P.S. TO COFFERDAM FUEL SUPPLY MACHINERY SPACE SUPPLY CONNECTION FROM ENGINEERS FITTING ON DECK STEAM PIPES TO STEAM OUT O.B. TANKS BY MEANS OF S.P. COVER TO BE SUITABLE FOR FITTING OF ADAPTOR FOR STEAMING OUT PURPOSES

NEUMATICATOR GAUGES FOR N<sup>Y</sup> 3A O.B. TANK & N<sup>Y</sup> 3 O.B. TANK.

EYE BOLTS P.S. TO BE FITTED ABOVE O.F. FILLING PIPES FOR SECURING TACKLE FOR LIFTING FLEXIBLE HOSE

CEMENT IN D.B.O.P. TANKS TO BE REMOVED.



APPROVED  
LLOYD'S REGISTER OF SHIPPING  
THE BRITISH ASSOCIATION REGISTER  
J. H. Clark  
4/2/20

013604 013610-0101



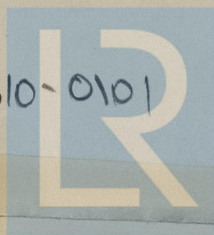
**"**  
**S.S. ORMARA.**

**GENERAL ARRGT. SHEWING MODIFICATION  
FOR CONVERSION TO OIL BURNING.**

*App'd. G/S. 9/2/50.*

*GR - 24129*

013604- 013610-0101



© 2021

Lloyd's Register  
Foundation