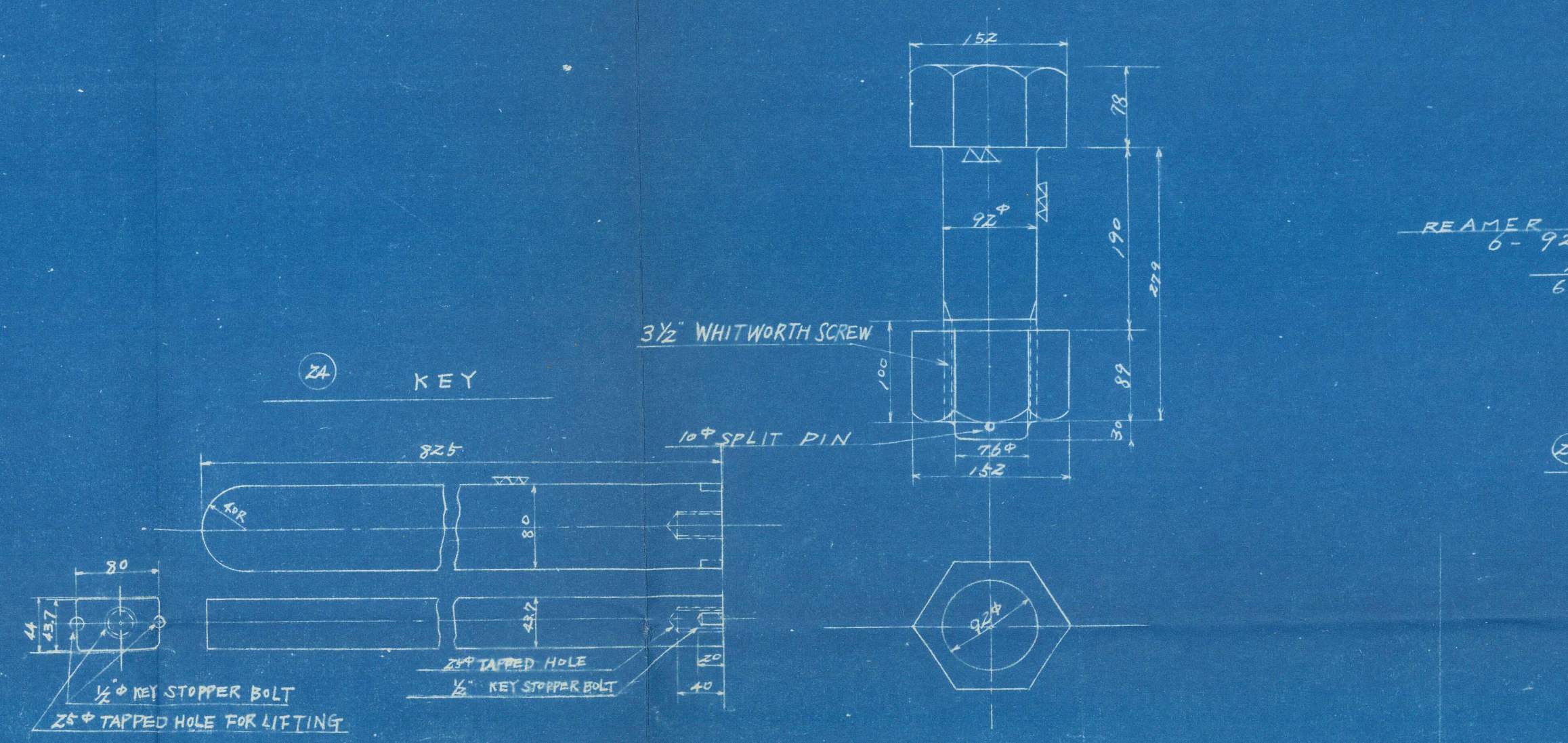


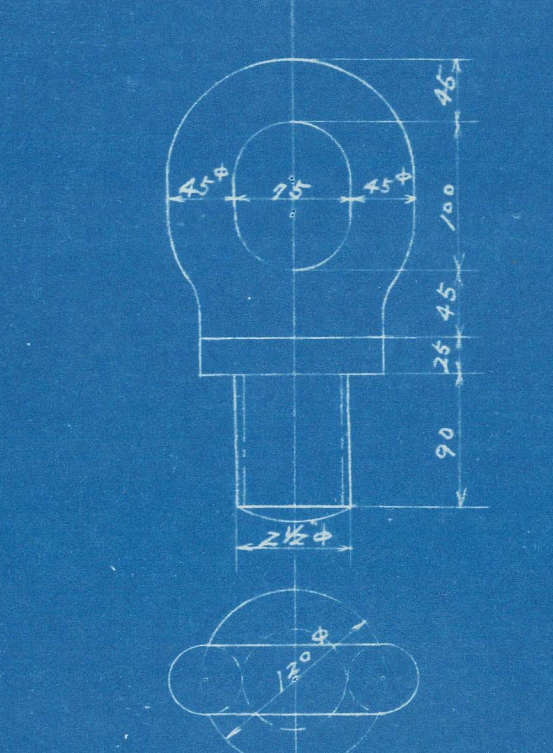
26 REAMER BOLT 1/8

25 EYE BOLT 1/8



SECTION M-M

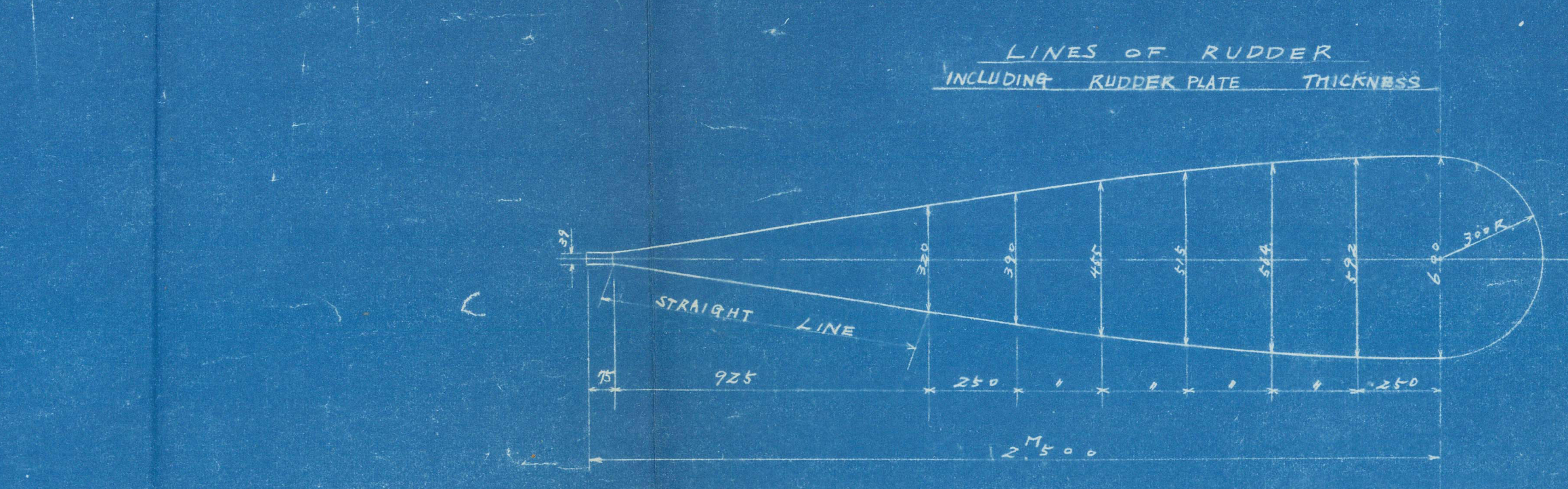
DETAIL OF RUDDER 1/15



SECTION AT REE WAY 1/10

SEE OTHER PLAN

UPPER DECK



SECTION N-N

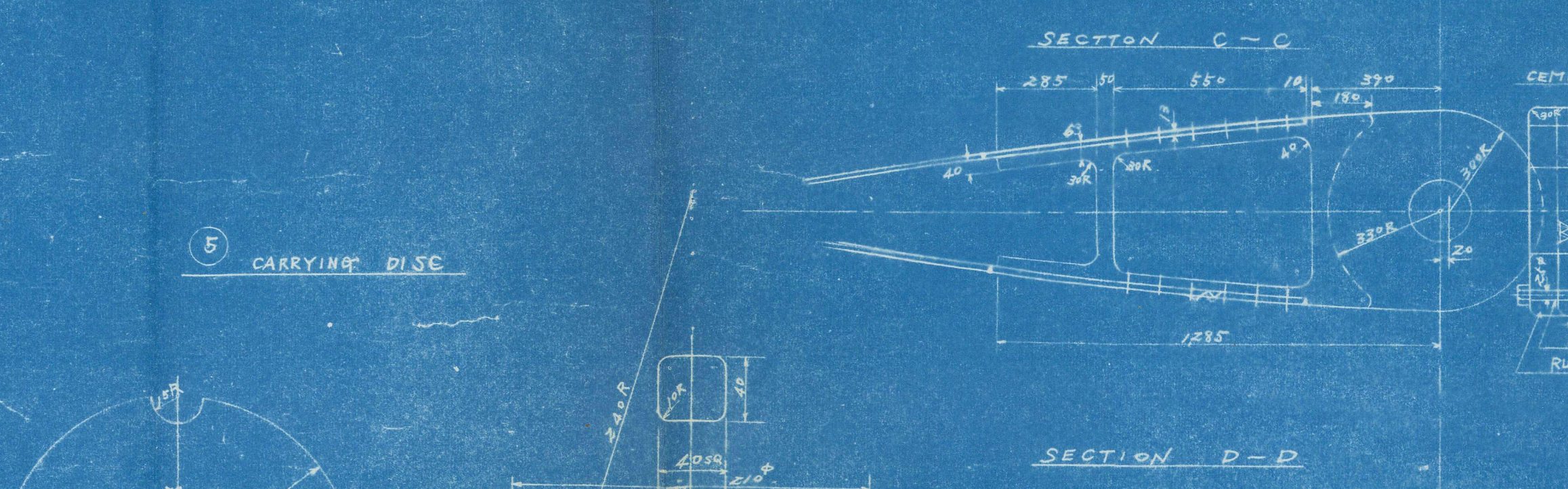
DETAIL OF RUDDER 1/15

F.D. SECTION LOOKING AFT

F.I. SECTION LOOKING FORWARD

SEE OTHER PLAN

UPPER DECK



SECTION O-O

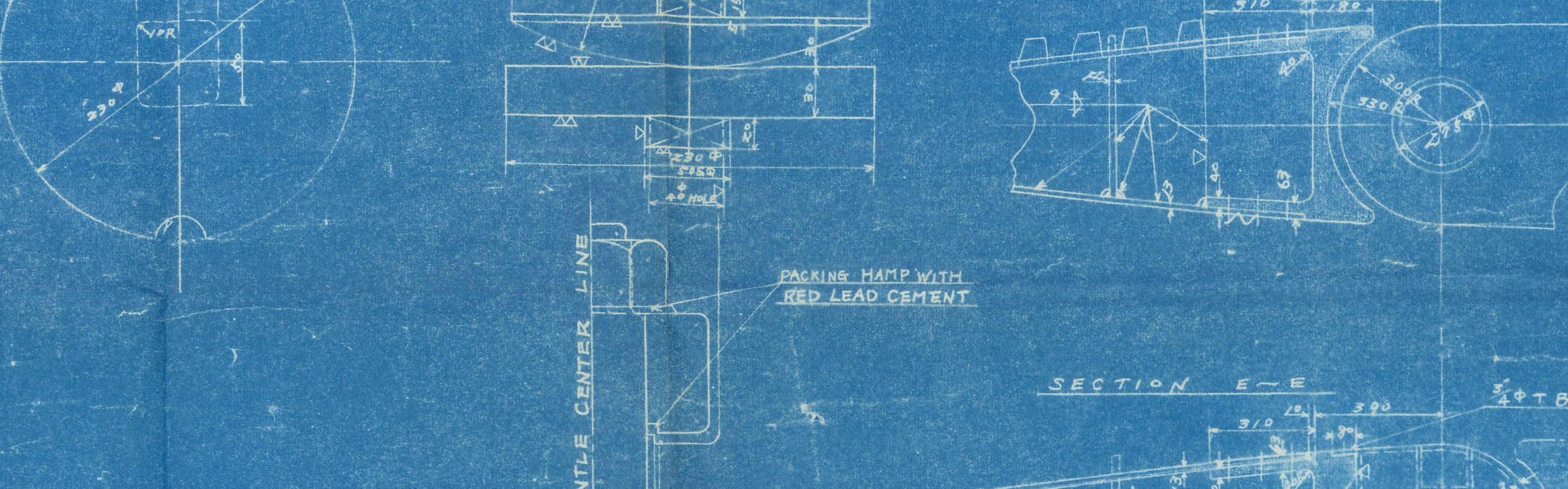
DETAIL OF RUDDER 1/15

F.D. SECTION LOOKING AFT

F.I. SECTION LOOKING FORWARD

SEE OTHER PLAN

UPPER DECK



SECTION P-P

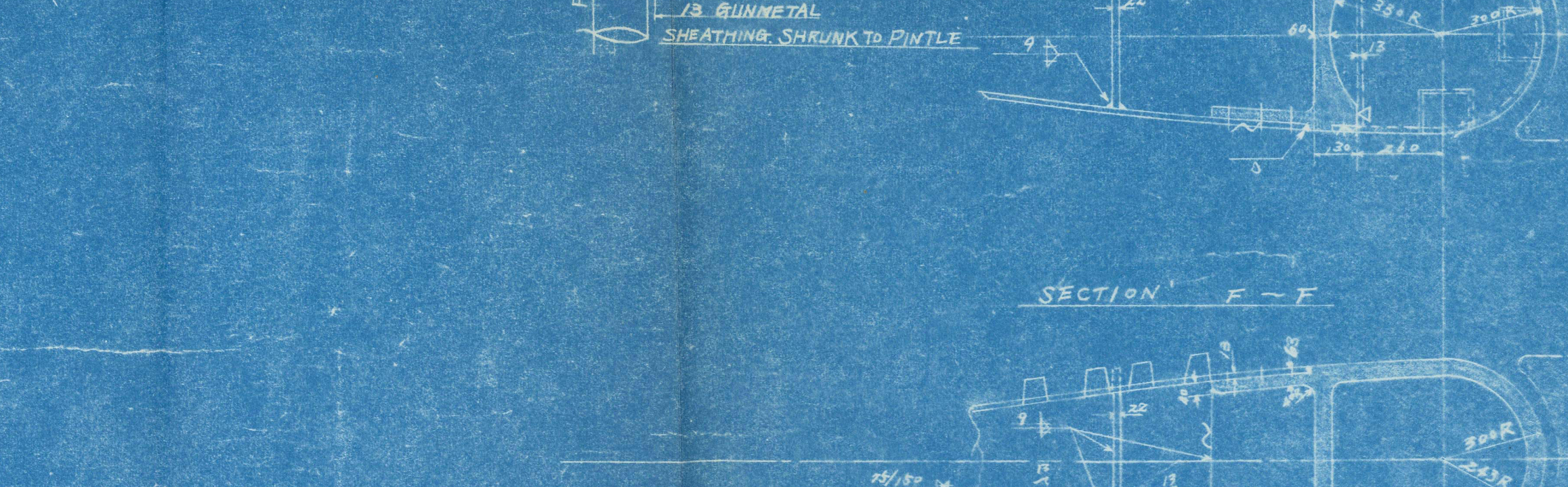
DETAIL OF RUDDER 1/15

F.D. SECTION LOOKING AFT

F.I. SECTION LOOKING FORWARD

SEE OTHER PLAN

UPPER DECK



SECTION Q-Q

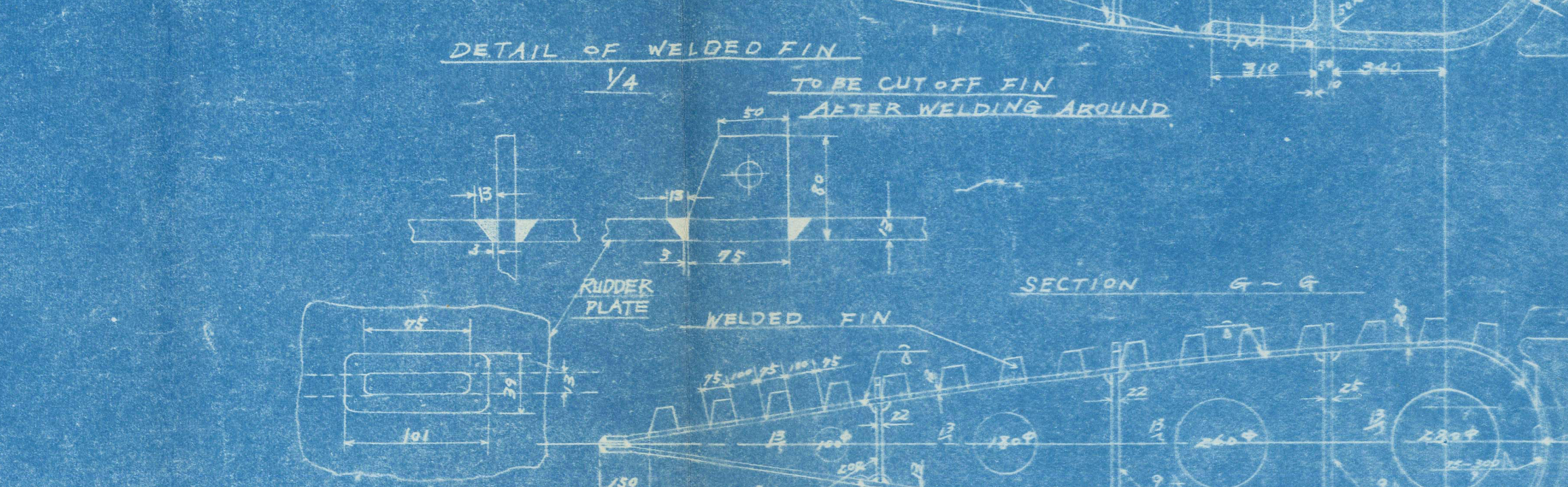
DETAIL OF RUDDER 1/15

F.D. SECTION LOOKING AFT

F.I. SECTION LOOKING FORWARD

SEE OTHER PLAN

UPPER DECK



SECTION R-R

DETAIL OF RUDDER 1/15

F.D. SECTION LOOKING AFT

F.I. SECTION LOOKING FORWARD

SEE OTHER PLAN

UPPER DECK



SECTION S-S

DETAIL OF RUDDER 1/15

F.D. SECTION LOOKING AFT

F.I. SECTION LOOKING FORWARD

SEE OTHER PLAN

UPPER DECK

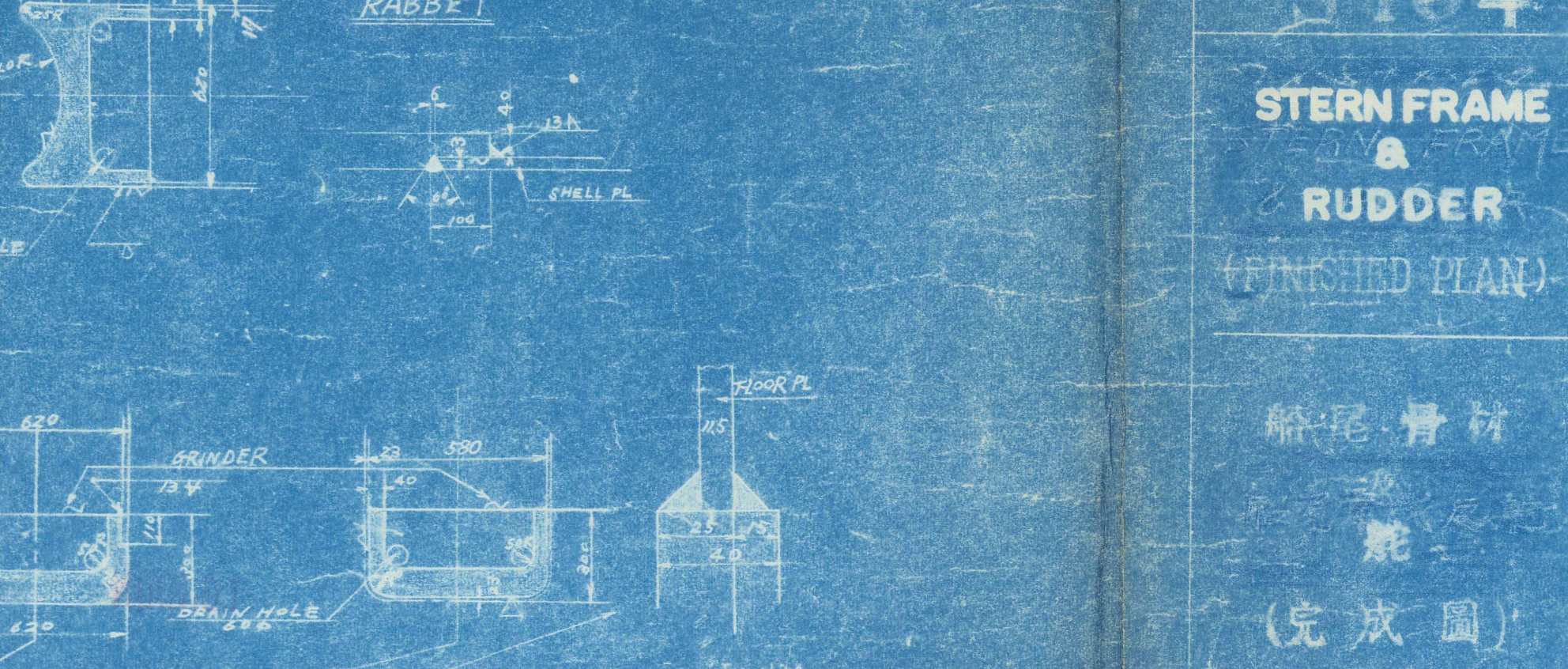
REMARK	MARK	QUANTITY	DESCRIPTION	UNIT	REMARK
1. 1/8" DIA. BOLT	1	1	1/8" DIA. BOLT	1	1/8" DIA. BOLT
2. 1/8" DIA. BOLT	2	2	1/8" DIA. BOLT	2	1/8" DIA. BOLT
3. 1/8" DIA. BOLT	3	3	1/8" DIA. BOLT	3	1/8" DIA. BOLT
4. 1/8" DIA. BOLT	4	4	1/8" DIA. BOLT	4	1/8" DIA. BOLT
5. 1/8" DIA. BOLT	5	5	1/8" DIA. BOLT	5	1/8" DIA. BOLT
6. 1/8" DIA. BOLT	6	6	1/8" DIA. BOLT	6	1/8" DIA. BOLT
7. 1/8" DIA. BOLT	7	7	1/8" DIA. BOLT	7	1/8" DIA. BOLT
8. 1/8" DIA. BOLT	8	8	1/8" DIA. BOLT	8	1/8" DIA. BOLT
9. 1/8" DIA. BOLT	9	9	1/8" DIA. BOLT	9	1/8" DIA. BOLT
10. 1/8" DIA. BOLT	10	10	1/8" DIA. BOLT	10	1/8" DIA. BOLT
11. 1/8" DIA. BOLT	11	11	1/8" DIA. BOLT	11	1/8" DIA. BOLT
12. 1/8" DIA. BOLT	12	12	1/8" DIA. BOLT	12	1/8" DIA. BOLT
13. 1/8" DIA. BOLT	13	13	1/8" DIA. BOLT	13	1/8" DIA. BOLT
14. 1/8" DIA. BOLT	14	14	1/8" DIA. BOLT	14	1/8" DIA. BOLT
15. 1/8" DIA. BOLT	15	15	1/8" DIA. BOLT	15	1/8" DIA. BOLT
16. 1/8" DIA. BOLT	16	16	1/8" DIA. BOLT	16	1/8" DIA. BOLT
17. 1/8" DIA. BOLT	17	17	1/8" DIA. BOLT	17	1/8" DIA. BOLT
18. 1/8" DIA. BOLT	18	18	1/8" DIA. BOLT	18	1/8" DIA. BOLT
19. 1/8" DIA. BOLT	19	19	1/8" DIA. BOLT	19	1/8" DIA. BOLT
20. 1/8" DIA. BOLT	20	20	1/8" DIA. BOLT	20	1/8" DIA. BOLT
21. 1/8" DIA. BOLT	21	21	1/8" DIA. BOLT	21	1/8" DIA. BOLT
22. 1/8" DIA. BOLT	22	22	1/8" DIA. BOLT	22	1/8" DIA. BOLT
23. 1/8" DIA. BOLT	23	23	1/8" DIA. BOLT	23	1/8" DIA. BOLT
24. 1/8" DIA. BOLT	24	24	1/8" DIA. BOLT	24	1/8" DIA. BOLT
25. 1/8" DIA. BOLT	25	25	1/8" DIA. BOLT	25	1/8" DIA. BOLT

NOTE: MATERIALS OF 1) 2) 15) 19) 20) 21) 22) 23) 24) 25) TO BE TESTED BY LLOYDS & N.K.K.

TYPE OF RUDDER	UNBALANCED RUDDER	SHIP'S PRINCIPAL DIMENSION	140' x 130' x 5' (4) 8' 31"	MAXIMUM SEA SPEED	16.8 KTS
PROTECTED RUDDER AREA	(A)	13.8' x 13.8' (4) 8' 31"			
D.O. AHEAD PINTLES OR LINE (A)		13.8' x 13.8' (4) 8' 31"			
D.O. AHEAD PINTLES OR LINE (A)		13.8' x 13.8' (4) 8' 31"			
RUDDER HEAD					
HORIZONTAL DISTANCE FROM CR. OF GRAVITY OF A' TO PINTLE CENTER LINE (D)		1' 1" (4) 8' 31"			
NUMERICAL N = A x D = 13.8 x 1.1 = 15.18					
HORIZONTAL DISTANCE FROM CR. OF GRAVITY OF A' TO PINTLE CENTER LINE		28' x 1/2" = 14' 1"			
NUMERICAL N = A x D = 13.8 x 1.1 = 15.18					
80% OF N'		54208 x 8 = 43366			
DIAMETER OF RUDDER HEAD		12" OR 305 mm (12")			
AREA SUPPORTED BY UPPER AHEAD PINTLE		27' x 1" (8' 31" x 1")			
Bottom		6' 10" x 6' 10"			
PINTLE DIAMETER OF UPPER & BOTTOM PINTLES		8" x 1" (216 mm x 25.4 mm)			

NOTE
1. DIMENSION MARKED TO BE DISTINCTLY DETERMINED BY FAIRING IN THE FIELD OF VIEW.
2. AIR & WATER TIGHTNESS OF RUDDER TO BE TESTED.
3. WATER PRESSURE TESTING WATER TIGHTNESS IS 9.8 ATMOSPHERIC PRESSURE.
4. PAINTING OF RUDDER INSIDE IS BITUMINOUS SOLUTION AND ENAMEL.
5. MAXIMUM CARBON CONTENT OF CASTING NOT TO EXCEED .45% FOR WELDING PURPOSES.

DEGREE OF FINISHING	1	2	3	4	5
1. SMOOTH SURFACE					
2. MEDIUM FINISH					
3. MEDIUM FINISH					
4. MEDIUM FINISH					
5. FINE					



STERN FRAME & RUDDER (FINISHED PLAN)

船尾骨材
(完成圖)

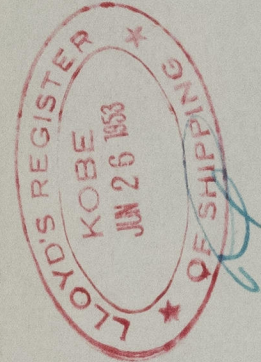
28.4.30

5
RECORDS DEPT.
LONDON

Stevedore and mudder.

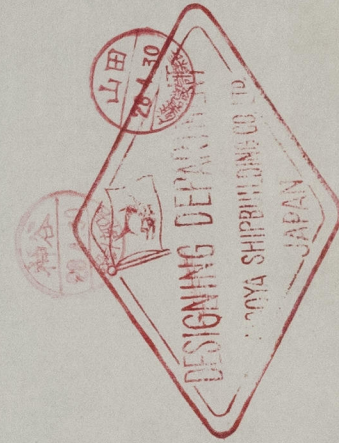
"NEW YORK MARU" ★

Certified copy of approved plan LLOYD



LONDON

KOBE RPT. NO. 1411
DATED. _____



MAY 11 1953

013596 — 013603-0146