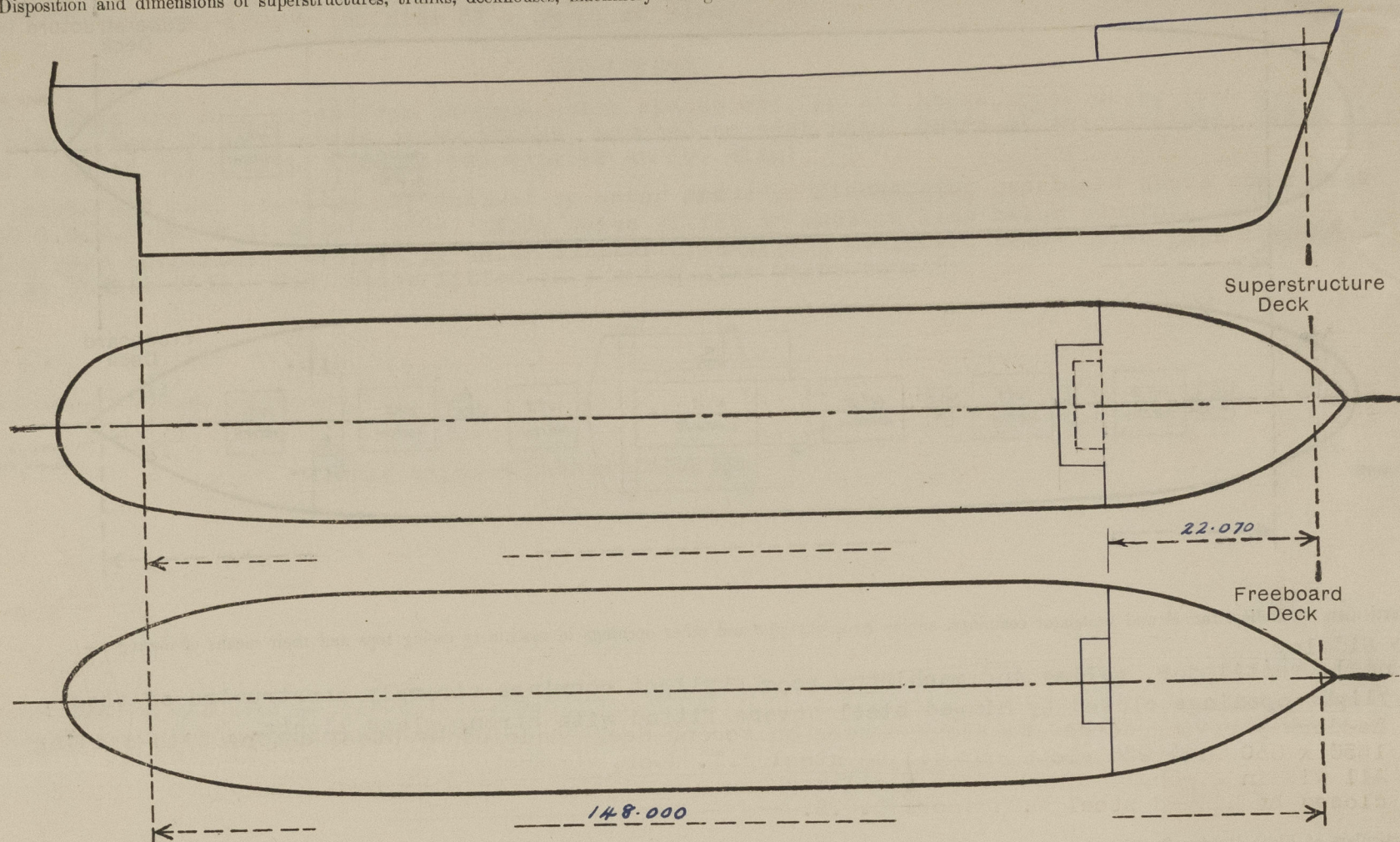


LLOYD'S REGISTER OF SHIPPING

Index No.
(For London Office only.)SURVEYS FOR FREEBOARD
(CONDITIONS OF ASSIGNMENT)

Ship's Name MANHATTAN MARU Port of Survey NAGASAKI, JAPAN
 Official Number 87987 Surveyor's Signature J.R. Ower
 Nationality and Port of Registry JAPANESE KOBE Date of Survey WHILST BUILDING

Disposition and dimensions of superstructures, trunks, deckhouses, machinery casings and wood sheathing to be inserted in the diagrams and tabular statement:—



Particulars of Superstructures, Trunks, Casings, Deckhouses.

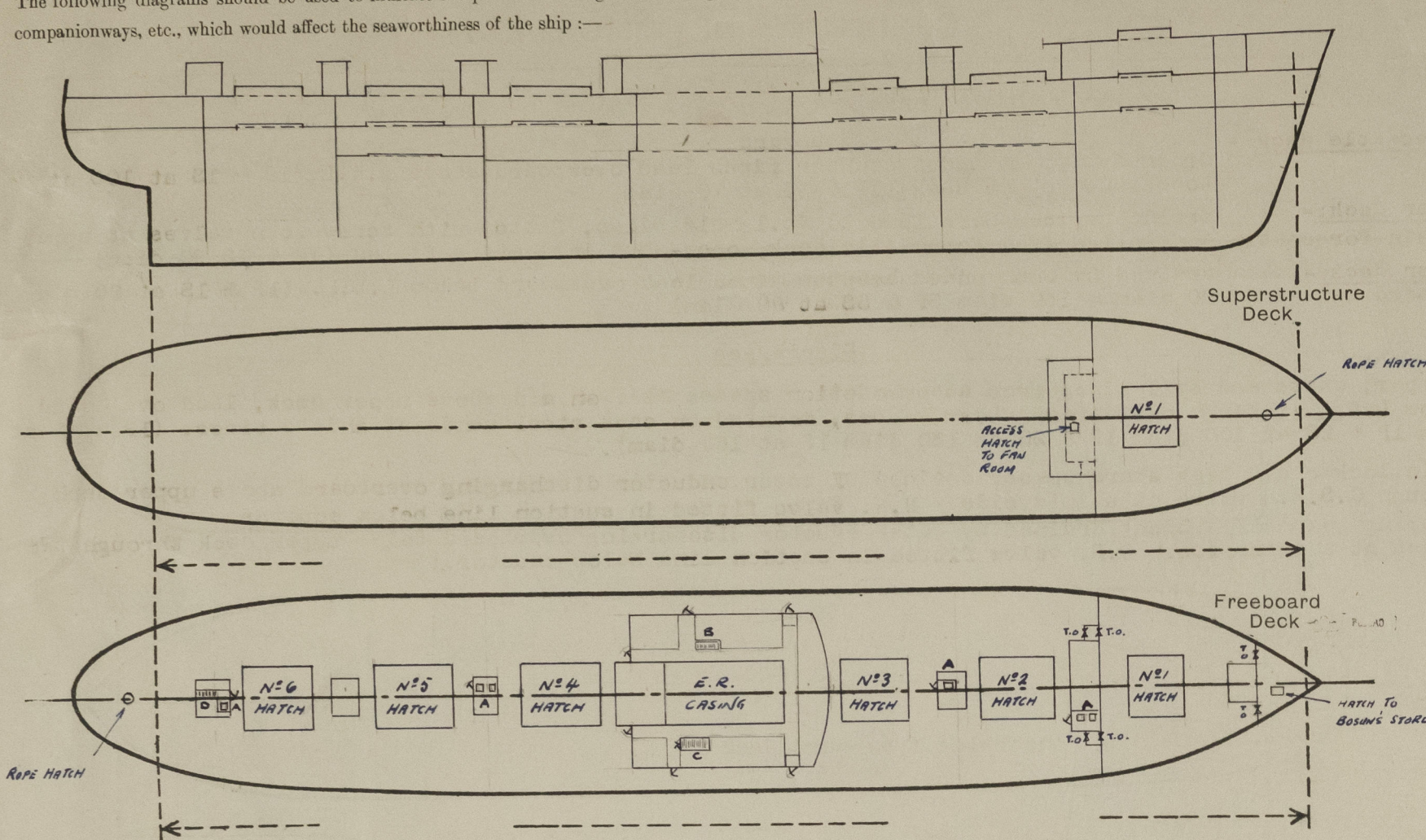
	Coaming	Plating	Stiffeners	Spacing	End Attachments of Stiffeners	Size of Openings	Height of Sills	Height, Beam to Beam
Poop Bulkhead ...	—	—	—	—	—	—	—	—
Raised Quarter Deck Bulkhead ...	—	—	—	—	—	—	—	—
Bridge, After Bulkhead ...	—	—	—	—	—	—	—	—
Bridge, Forward Bulkhead ...	—	—	—	—	—	—	—	—
Forecastle Bulkhead ...	7.5	7.5	120 x 12 F.B. 125 x 75 x 10 O.A.T.W.	600/ 760	WELDED TOP AND BOTTOM	1/2 x 15 1550 x 1210 1300 x 600 1450 x 600/800	380	2500
Trunk, Aft ...	—	—	—	—	—	—	—	—
Trunk, Forward ...	—	—	—	—	—	—	—	—
Exposed Machinery Casings on Freeboard or Raised Quarter Decks ...	—	—	—	—	—	—	—	—
Exposed Machinery Casings on Superstructure Decks ...	—	—	—	—	—	—	—	—
Machinery Casings within Superstructures not fitted with Class 1 Closing Appliances — MIDSHIP DECKHOUSE	FRONT SIDES END	10 9 8	250 x 90 x 10/15 O.A.T.W. 125 x 75 x 7 O.A.T.W. 120 x 12 F.B. 150 x 90 x 9 F. 120 x 11 F.B.	750 800 760	WELDED TOP & BOTTOM BKT. TOP, WELD BOT. WELDED TOP & BOTTOM	NONE 1650 x 750/1200 1650 x 750	— 380 380	— 2450 —
AFT Deckhouses and Pump Room Entrances MASTHOUSES	8-12	8-12	100 x 75 x 7 O.A.T.W. 150 x 90 x 9 O.A.T.W.	760	WELDED TOP AND BOTTOM	1300 x 600/750	610	2300

Particulars of Closing Appliances (state if capable of being manipulated from both sides).

Poop Bulkhead ...	—	
Raised Quarter Deck Bulkhead ...	—	
Bridge, After Bulkhead ...	—	
Bridge, Forward Bulkhead ...	—	(CLASS 1) ✓
Forecastle Bulkhead ...	HINGED STEEL W.T. DOOR	(CLASS 2) ✓
Exposed Machinery Casings on Freeboard or Raised Quarter Decks ...	STORMBOARDS IN WELDED CHANNELS	
Exposed Machinery Casings on Superstructure Decks ...	—	
Machinery Casings within Superstructures not fitted with Class 1 Closing Appliances — MIDSHIP DECKHOUSE	HINGED STEEL W.T. DOORS M.B.S.	(CLASS 1) ✓
AFT Deckhouses and Pump Room Entrances MASTHOUSES	HINGED STEEL W.T. DOORS M.B.S.	(CLASS 1) ✓

PARTICULARS OF PROTECTION TO OPENINGS, ETC.

The following diagrams should be used to indicate the positions of cargo and coaling hatchways, gangway, cargo and coaling ports, side scuttles, scuppers, ventilators, companionways, etc., which would affect the seaworthiness of the ship :-



Particulars of fiddley, funnel and ventilator coamings, engine room skylight and other openings in machinery casing tops and their means of closing :-

No fiddley
Funnel, ventilator, galley and machinery room skylight coamings strongly constructed of steel.
Skylight openings closed by hinged steel covers fitted with strong glass lights. ✓

Particulars of Flush Bunker Scuttles :-

None ✓

Particulars of Companionways :-

(including those incorporated in deckhouses and masthouses)

- (A) Ladderways giving access to cargo space enclosed by strongly constructed steel masthouses. ✓
Openings 1300 x 600 sills 610 closed by hinged steel W.T. doors O.B.S. ✓
- (B) Ladderways giving access to store spaces on second deck protected by 230 high hatch coaming opening closed by hinged steel W.T. cover capable of being secured, all withing strongly constructed steel deck house amidships. Openings 1650 x 750/1200 sills 380 closed by hinged steel W.T. doors O.B.S. ✓

Particulars of Ventilators in exposed positions on freeboard and superstructure decks :-

Forecastle deck 4 - 200 Diam gooseneck vents 8 coaming 915 high. ✓ Upper deck 2 at 300 diam mush vents 9 coamings 915 high. ✓
2 at 150 x 75 gooseneck vents 9 " 915 high. ✓

Derrick Post Tops

4 at 900 diam mush vents on 25/16 Thick Derrick Post) All
4 at 700 " " " " 22/14 " " ") efficiently ✓
2 at 600 " " " " 22/14 " " ") supported. ✓

Mast house tops

Mechanical ventilation system "Cargo Caire" supply and exhaust vents.
11 at 500 x 620/650 x 730 gooseneck vents
10 coamings 1650 high adequately supported ✓

Aft deckhouse top

1 at 450 diam mush vent 10 coaming 760 high ✓ Closing Appliances
1 at 450 diam cowl vent 10 coaming 760 high ✓
Gooseneck vents - hinged steel W.T. covers with securing device ✓
Mush vents - screw down steel W.T. covers. ✓
Cowl vents - hinged steel W.T. covers with securing device ✓

Particulars of Air Pipes in exposed positions on freeboard, raised quarter, or superstructure decks :-

Forecastle deck

2 at 130 diam 460 high ✓

Upper deck

22 at 130 diam 915 high
5 at 100 " 915 "
14 at 80 " 915 "
1 at 70 " 915 "
7 at 50 " 915 " ✓

Air pipes from O.F. tanks fitted with wire gauze.
All air pipes fitted with efficient closing appliances. ✓

Particulars of Gangway Cargo and Coaling Ports :-

None

Particulars of Scuppers and Sanitary Discharge Pipes :-

Forecastle deck:-

drained by open ended scupper pipes lead overboard above L.W.L. (1P & 1S at 100 diam) and to exposed upper deck (1P & 1S at 70 diam) ✓

Upper deck:-

drained by scuppers lead to No.1 hold bilge, fitted with screw down valves at upper end controlled from forecastle deck, open-shut indicators fitted (1P & 1S 90 diam) ✓

Upper deck:-
exposed

drained by open ended scupper pipes lead overboard below L.W.L. (1P & 1S at 80 diam, 90 diam & 160 diam 5P & 5S at 80 diam) ✓

Discharges

Scupper, waste and soil pipes from accommodation spaces etc. on and above upper deck, lead overboard below L.W.L. through cast brass storm valves, mounted on cast steel bends at ship's sides. (1P & 2S at 80 diam 1P & 2S at 100 diam 1P & 2S at 130 diam 1P at 160 diam). ✓

Chain locker and peak store spaces drained by water eductor discharging overboard above upper deck through C.S.N.R. valve at ship's side. N.R. valve fitted in suction line below eductor. ✓

Steering gear compartment drained by water eductor discharging overboard below upper deck through two C.S.N.R. valves at ship's side. N.R. valve fitted in suction line below eductor. ✓

Particulars of Side Scuttles and Deadlights :-

None below freeboard deck ✓

Vertical distance of Sill of lowest Side Scuttle above top of keel _____

Distance from amidships to centre of lowest Side Scuttle _____

Particulars of Guard Rails and Bulwarks :-

Forecastle deck:- 1050 high stanchions approx. 1400 apart with 3 rails ✓

Upper deck:-

Bulwarks 1150 high 7.5 thick with 180 x 9.5 BP rail bar and brackets spaced 1220 to 1600 apart ✓

Particulars of Gangways, Lifelines, etc. :-

None ✓

Particulars of Freeing Arrangements.

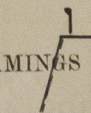
	Length of Bulwark	Height of Bulwark	Size of Freeing Ports	Number each side	Area each side	Rule area each side
After Well ...	64 m	1150	1450 x 225	14	4.415	3.884
Forward Well ...	20 m	1150	1300 x 225	10	2.816	1.213

State position of each freeing port ... (F. and A. position and height above deck edge) { After Well :- FRAME N°s. 15-19, 27-31, 35-39, 43-47, 51-55, 59-63, 67-71
Forward Well :- FRAME N°s. 114-118, 122-126, 130-134, 138-142, 146-150
HEIGHT ABOVE DECK EDGE :- 280

State whether the freeing ports are fitted with shutters, bars, or rails, and give particulars of such :- OPEN

Additional area where sheer is less than standard.

PARTICULARS OF PROTECTION TO OPENINGS, ETC.

HATCHWAYS ON FREEBOARD AND SUPERSTRUCTURE DECKS.													
← UPPER DECK →							→ FORECASTLE DECK →						
Description of Hatchway	Nº 1	Nº 2	Nº 3	Nº 4	Nº 5	Nº 6	ROPE HATCH	Nº 1	ROPE HATCH	ACCESS To FAN ROOM	
Dimensions of Hatchway	7535 x 4500	12455 x 7000	11200 x 7000	11200 x 7000	12800 x 7000	8800 x 7000	600 DIAM	7535 x 4500	600 DIAM	600 x 600	
<div>COAMINGS</div> 	Height above Deck	...	230 ✓	←			800 ✓		620	850 ✓	620 ✓	620	
	Thickness	Sides	...	x	←		12 ✓		11.5 ✓	12	11.5 ✓	11.5 ✓	
		Ends	...	11 B.P. ✓	←		12 ✓						
	Stiffeners	Sides	...	-	360 x 36	300 x 16	300 x 20	430 x 36	300 x 20	-	250 x 16	-	-
	Brackets, Stays	Ends	...	-	7 3 ✓	6 3 ✓	6 3 ✓	7 3 ✓	5 3 ✓	-	180 x 16	-	-
HATCH BEAMS	Number	...	4	8	6	6	7	5					
	Spacing	...	1600	1432.5	1605	1605	1605	1600					
	Scantling and Sketch		210 x 16	230 x 20	245 x 20	245 x 20	245 x 20	245 x 20		STEEL PONTON TYPE HATCH COVERS FITTED AMIDSHIPS. TOP PLATING 7.5 THICK, SIDES & ENDS 192.5 x 9 THICK WITH ATWARTSHIP STIFFENER WEB 179.8 x 9 WITH 135 x 12.7 FACE BAR.			
			3/4 x 10	460 x 12.7	460 x 12.7	460 x 12.7	460 x 12.7	460 x 12.7					
			210 x 16	230 x 20	245 x 20	245 x 20	245 x 20	245 x 20					
Bearing Surface	...	75 ✓	150 ✓	150	150	150	150						
FORE AND AFTERS	Number	...											
	Spacing	...											
	Unsupported Lengths	...											
	Scantling* and Sketch	...											
HATCH COVERS	Material	...				WOOD			STEEL		STEEL	STEEL	
	Thickness	...				75			8		8	7.5	
	How fitted	...				FORE & AFT			HINGED		HINGED	HINGED	
	Bearing Surface	...				65			N.T.		N.T.	N.T.	
Spacing of Cleats				610 ✓			4	610	4	6	
Number of Tarpaulins				TWO ✓			TOGGLES	TWO	TOGGLES	TOGGLES	
<p>*Are wood fore and afters steel shod at all bearing surfaces? <input checked="" type="checkbox"/></p> <p>Are battens and wedges efficient and in good condition? <input checked="" type="checkbox"/> YES</p> <p>Are tarpaulins in good condition and in accordance with rule requirements? <input checked="" type="checkbox"/> YES</p> <p>Are lashings provided in accordance with rule requirements? <input checked="" type="checkbox"/> LOCKING BARS - YES</p> <p>Are wood covers fitted with galvanised end bands? <input checked="" type="checkbox"/> YES</p>													

Particulars of any special features:— (Timber Deck-cargo Fittings, Skylights, Sewage Systems, Ash Ejectors, Rubbish Shoots, etc.)

- (C) Ladderway giving access to store spaces on second deck enclosed by steel casing with opening 1650 x 850 sill 230 closed by hinged steel W.T. door, All within strongly constructed steel deckhouse amidships. Opening 1650 x 750/1200 sills 380 closed by hinged steel W.T. doors O.B.S.
- (D) Ladderway giving access to steering gear compartment enclosed by steel casing within strongly constructed steel aft deckhouse. Opening 1300 x 750, sill 610 closed by hinged steel W.T. door O.B.S.

Access to chain locker
650 x 450 opening sill 1000 closed by hinged steel W.T. cover 11 thick secured by 6 toggles.

Access hatches withing masthouses
600 x 600 and 500 x 600 openings 10 coamings 230 high closed by hinged steel W.T. covers secured by 6 toggles.

Access hatch to Bosuns store

1200 x 580 opening 11 coaming 230 high closed by wood covers 65 thick, bearing surface, 65, one tarpaulin, battens, and cleats 610 apart.



© 2021

Lloyd's Register
Foundation