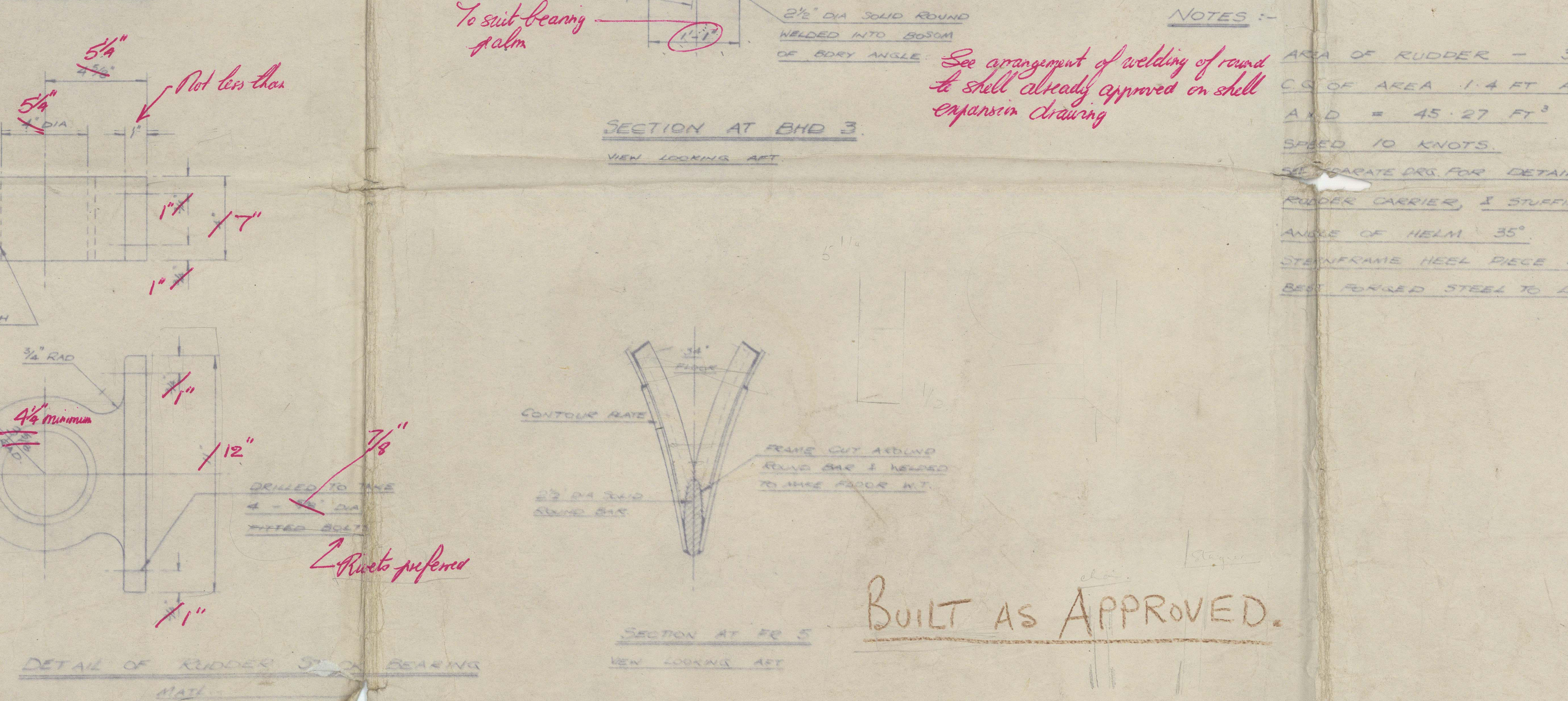
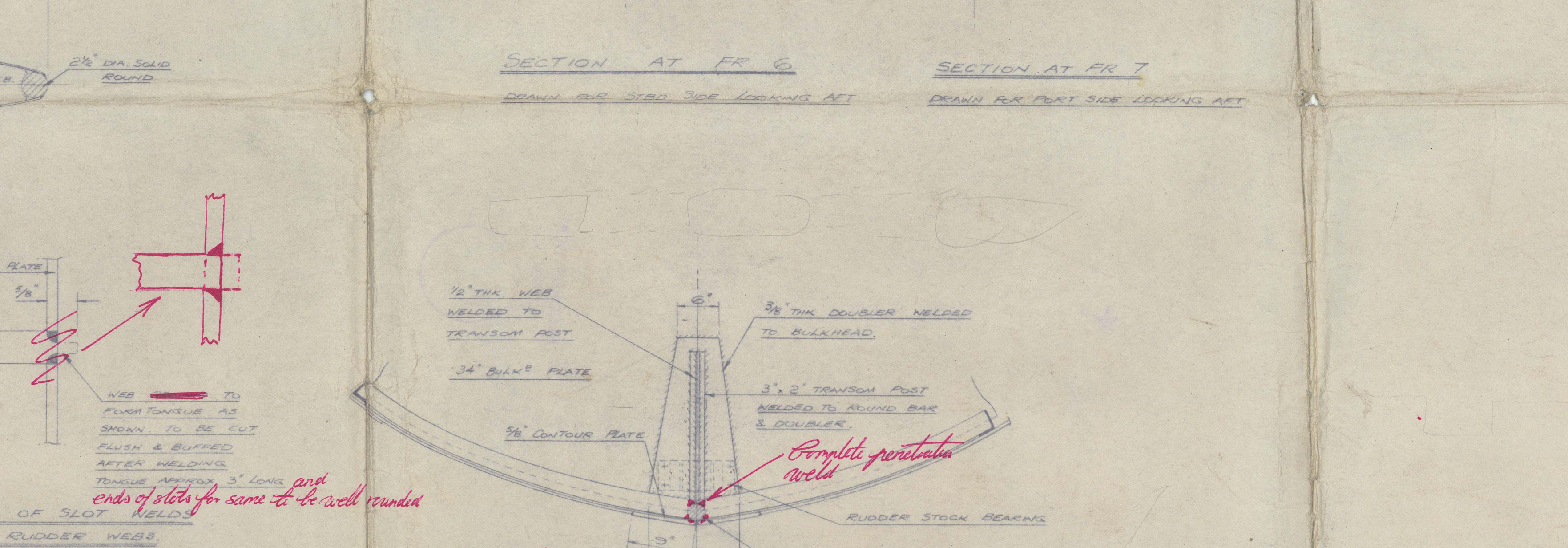
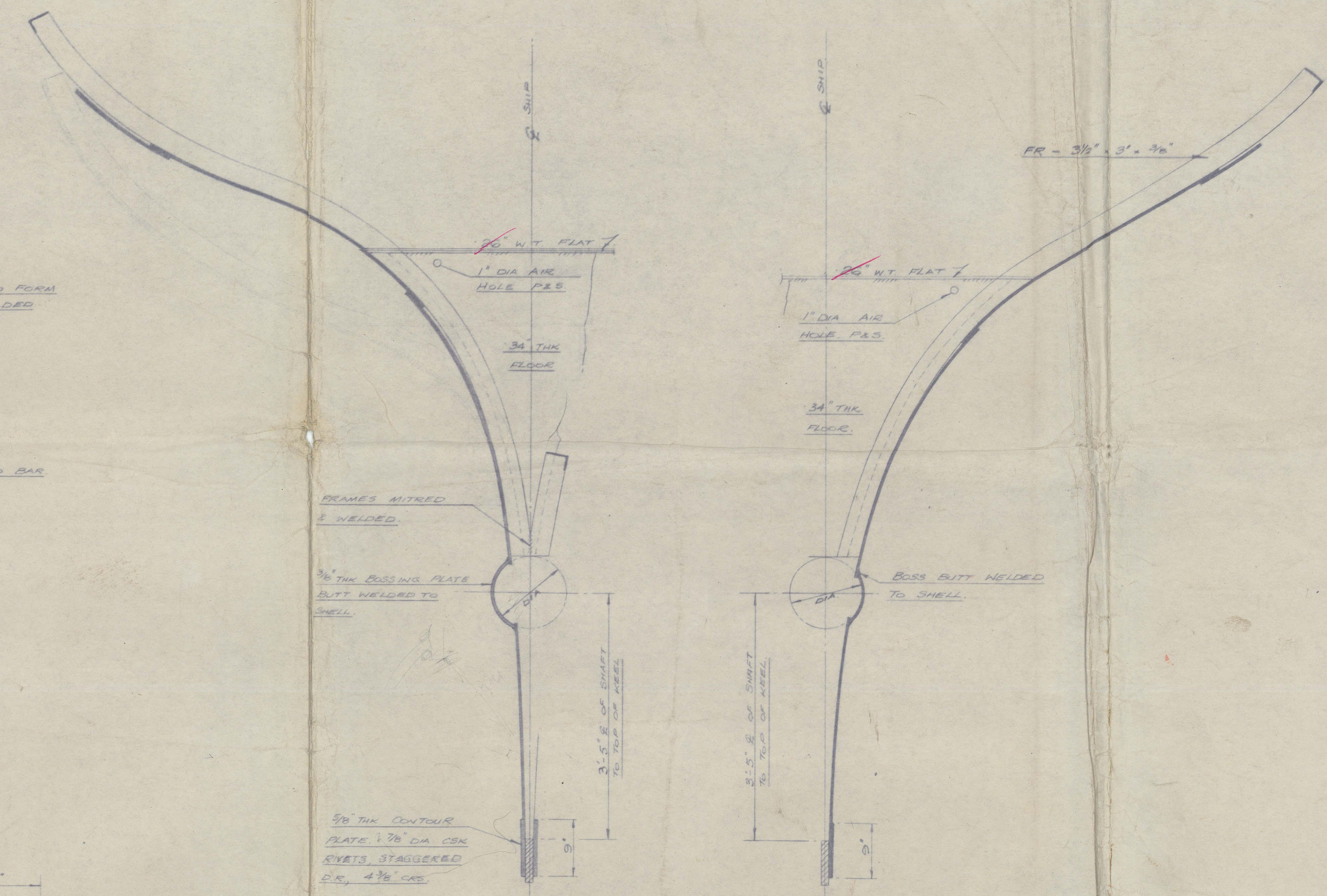
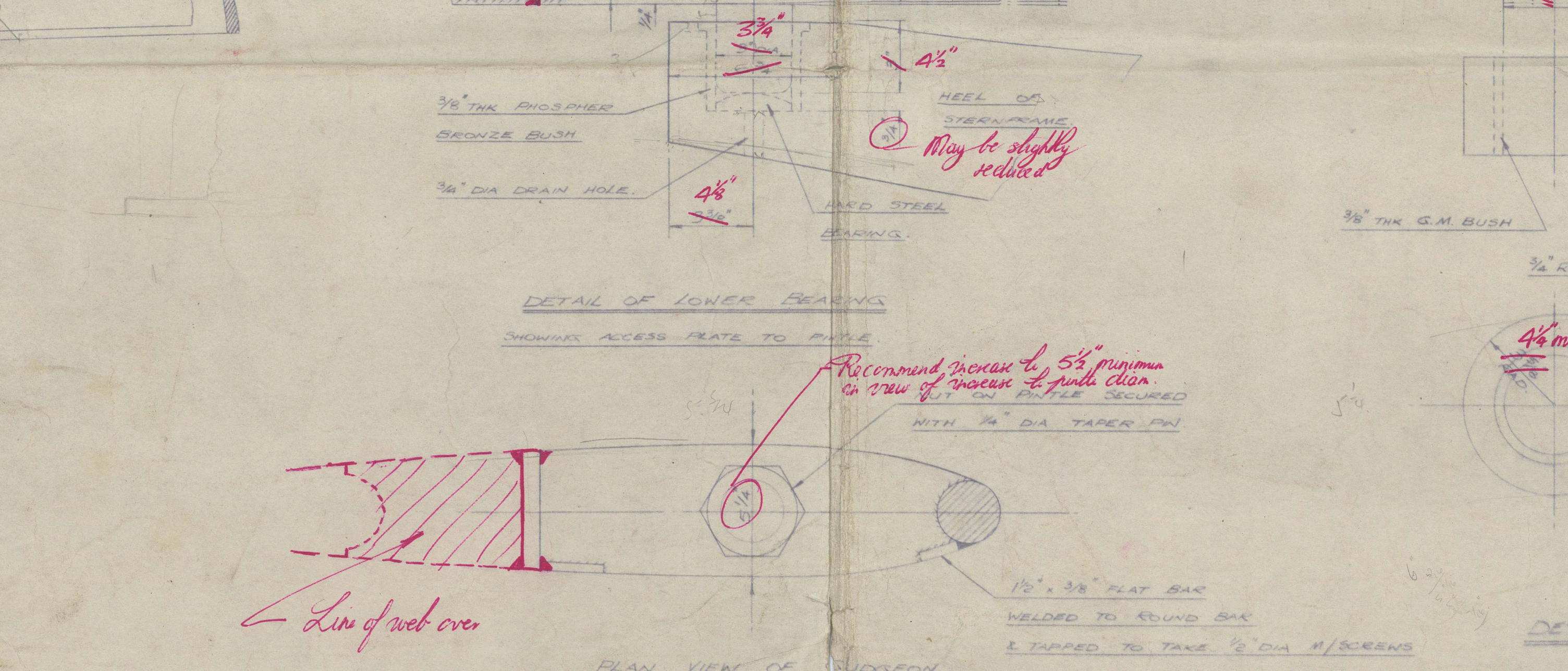
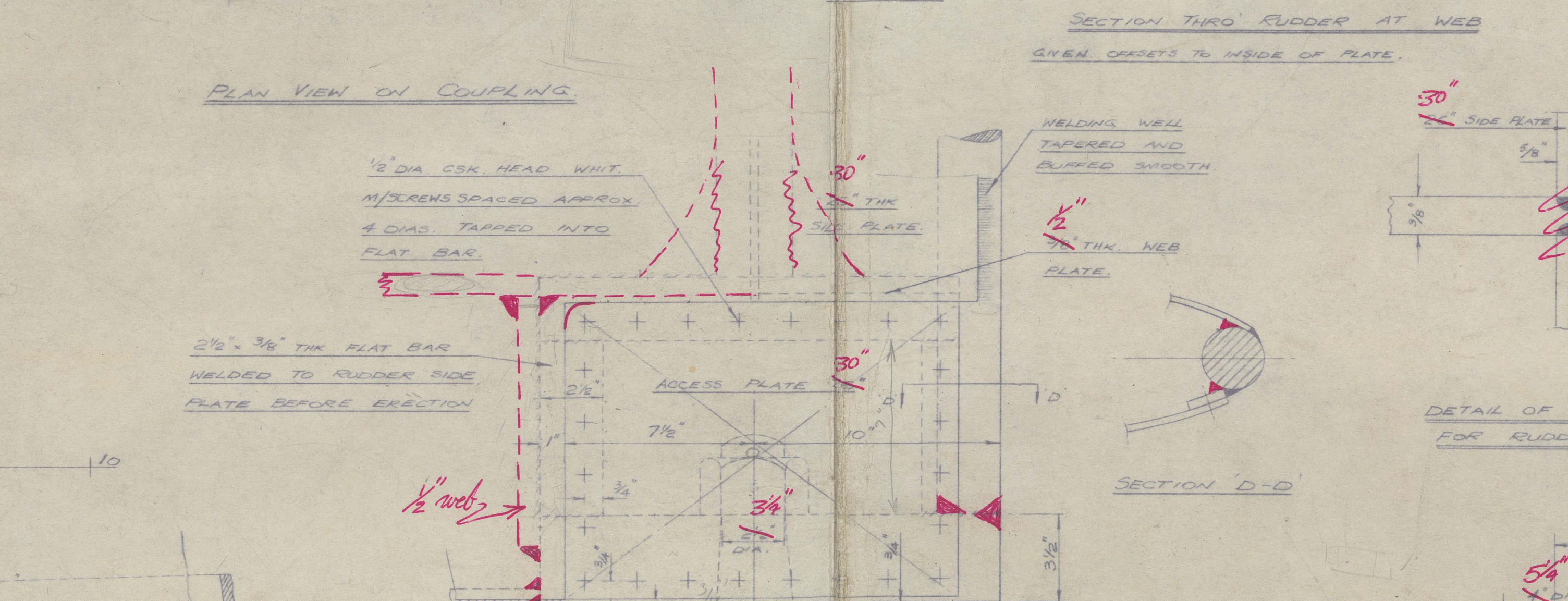
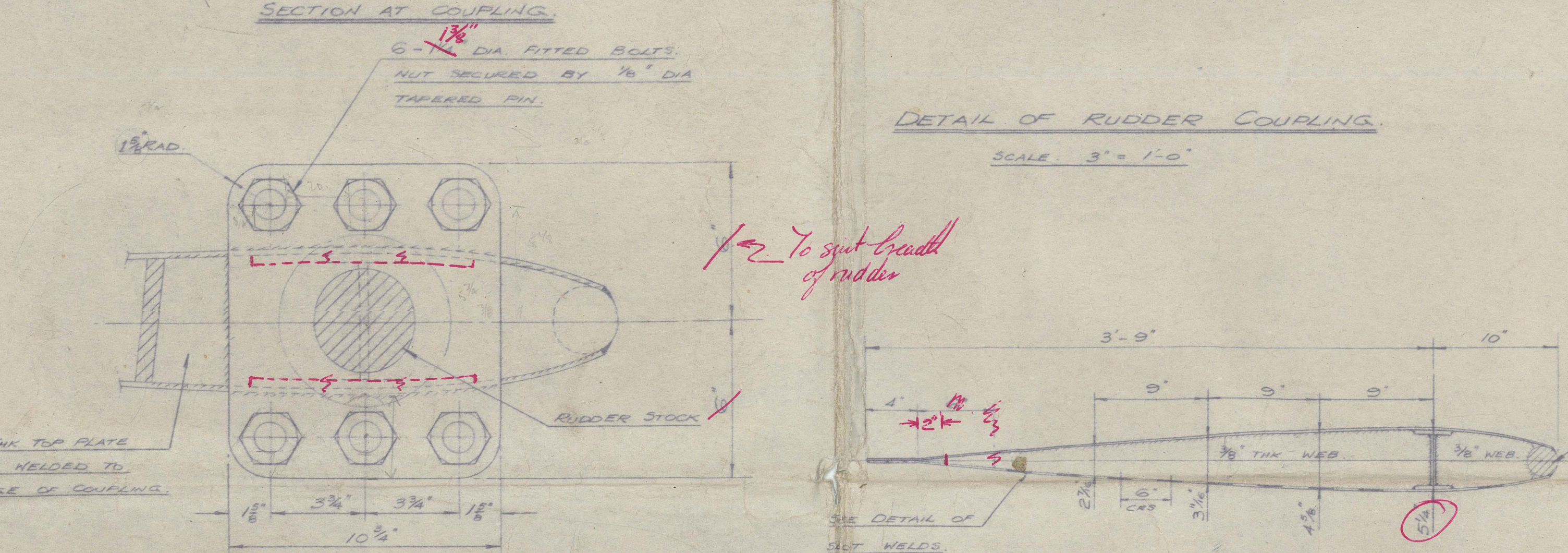
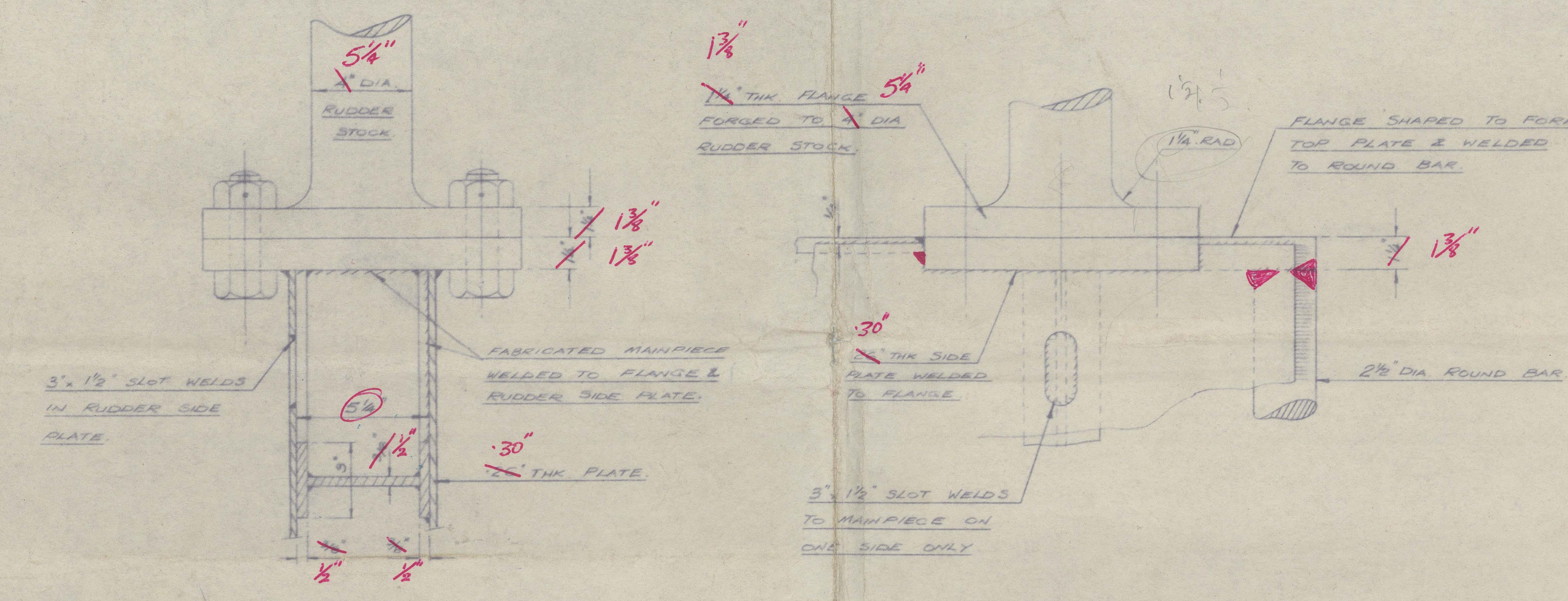
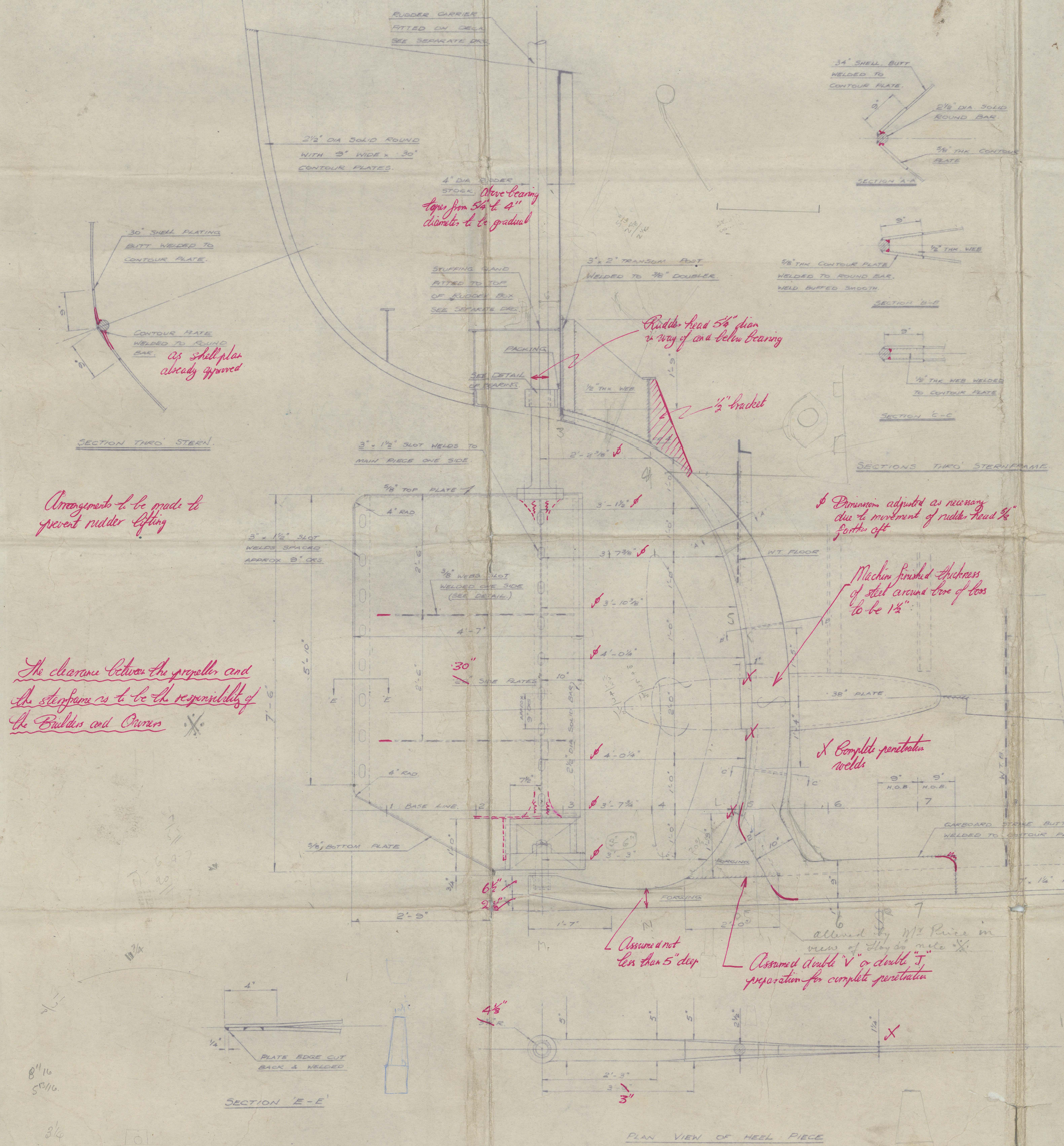


5 OCT 1955



NOTES -
AREA OF RUDDER - 32.31 SQ. FT.
C.G. OF AREA 1.4 FT. AFT OF CR OF RUDDER STOCK
AND = 45.27 FT.
SPEED 10 KNOTS.
FOR DETAILS OF MACHINING RUDDER STOCK,
RUDDER CARRIERS, & STERNFRAMES
ANGLE OF HELM 35°
STERNFRAME HELM PIECE & RUDDER STOCK TO BE OF
BEEHIVE ROLLER STEEL TO MEET LLOYD'S REQUIREMENTS.

BUILT AS APPROVED.

YARD NO.	SCS	STEEL DESIG. TRANS.
13571	013578	0045
ISSUED DATE		
APPROVED DATE		
DESIGNED BY		
APPROVED BY		
RS HAYES		

"
NORRARD STAR" ★

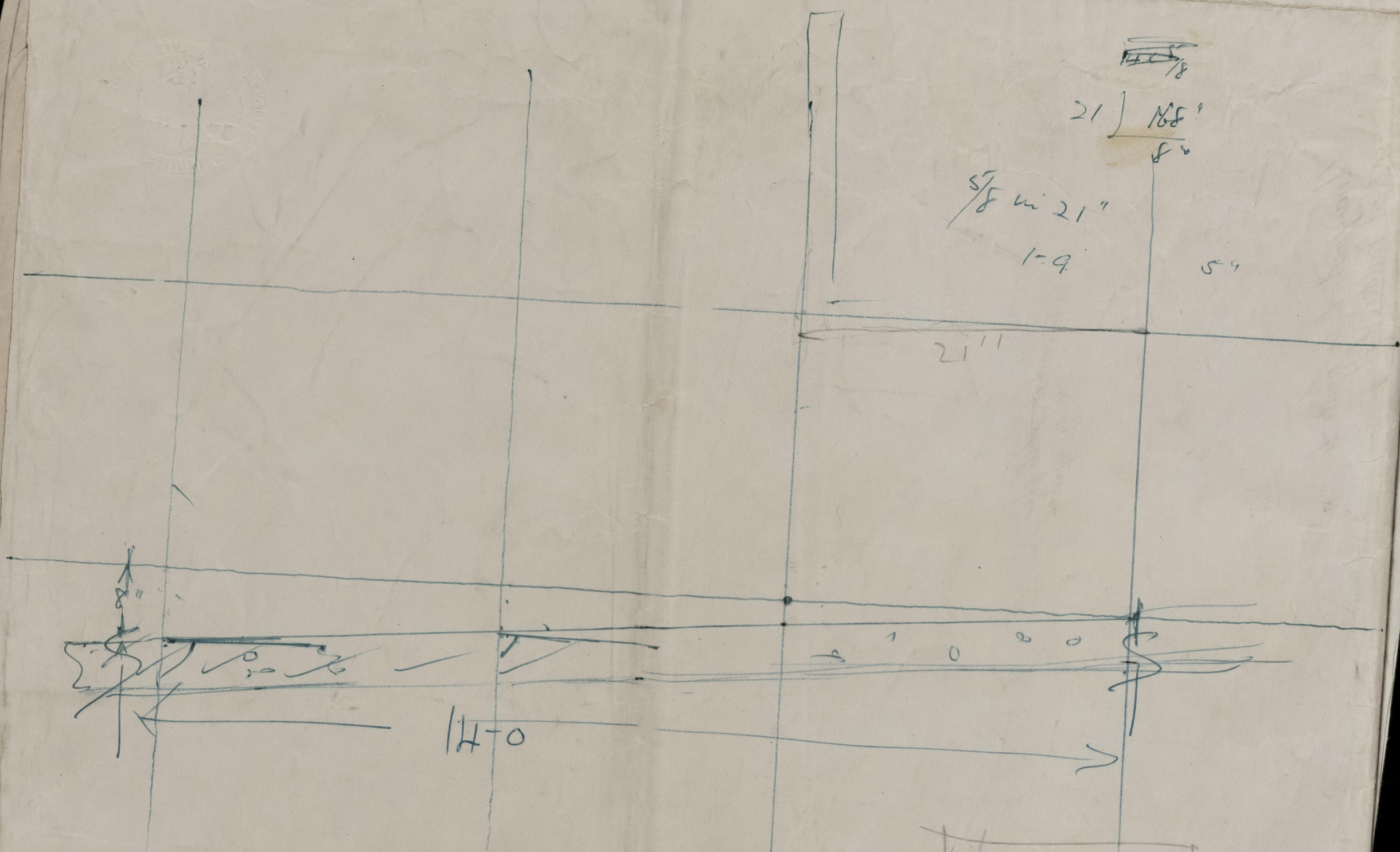
Riddle &
Stemframe

RECORDS DEPT.
LONDON.

10

© 2021
013571-013578-0045

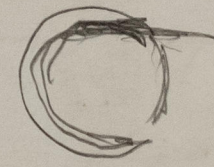
Lloyd's Register
Foundation



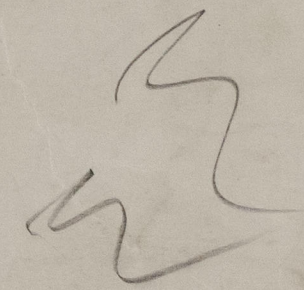
013571-013578-0045

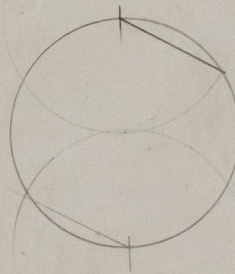
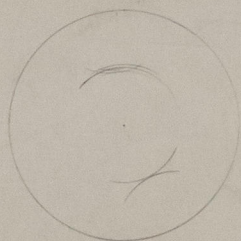
18-0

3-3
6-6
4-6
14-3

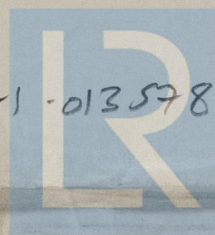


013571-013578-0045





013571-013578-2045



© 2021

Lloyd's Register
Foundation