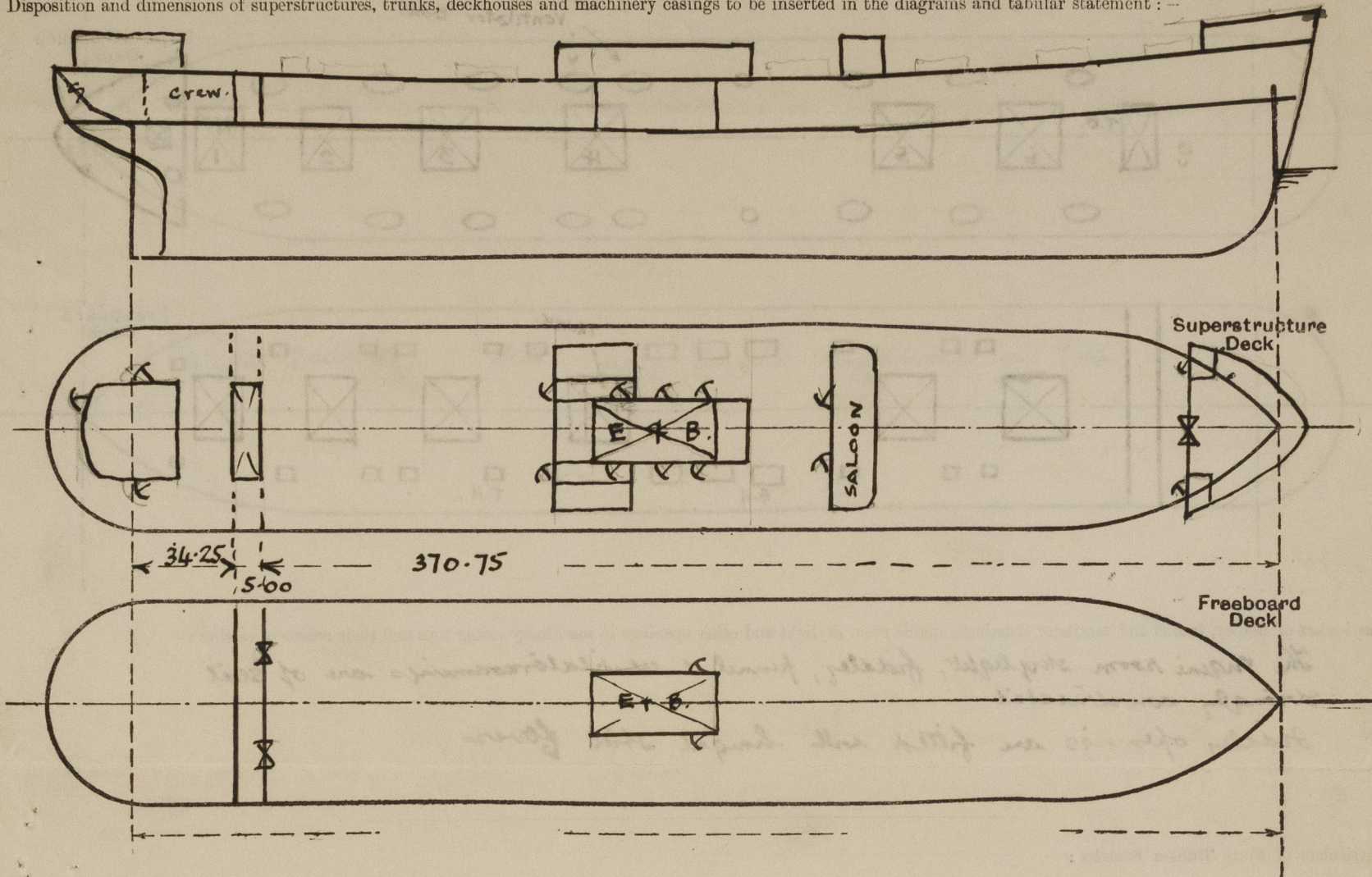


Lloyd's Register of Shipping.  
SURVEYS FOR FREEBOARD.  
(CONDITIONS OF ASSIGNMENT.)

Nº 32710

Ship's Name *HERMISTON* Port of Survey *Sunderland*  
Official Number \_\_\_\_\_ Surveyor's Signature *B A Mellan*  
Nationality and Port of Registry *British Newcastle* Date of Survey *whilst building 1939.*

Disposition and dimensions of superstructures, trunks, deckhouses and machinery casings to be inserted in the diagrams and tabular statement : —

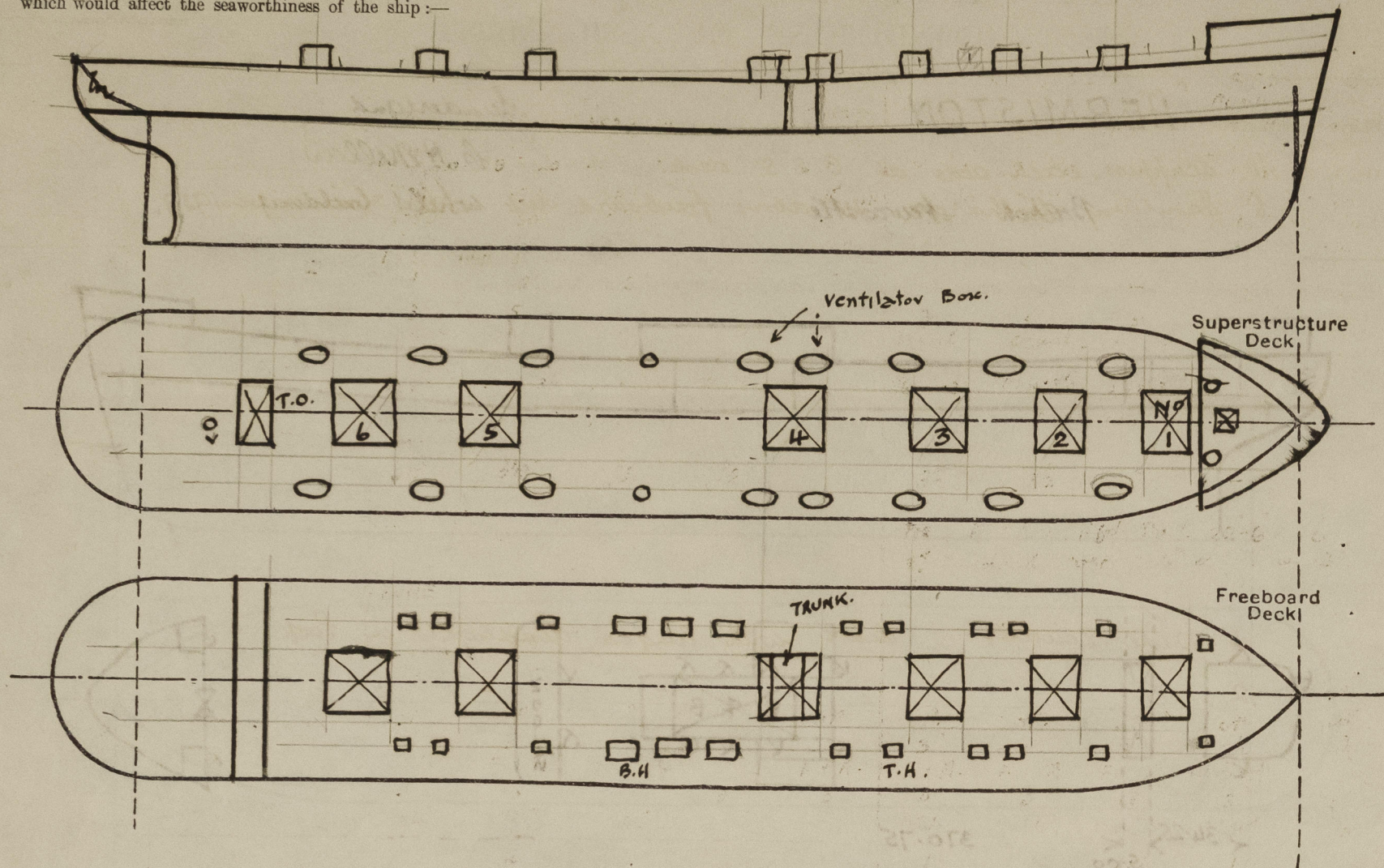


| Particulars of Superstructures, Trunks, Casings, Deckhouses.                               |   |         |                |         |                               |                  |                 |                   |
|--|---|---------|----------------|---------|-------------------------------|------------------|-----------------|-------------------|
|  | Coaming   | Plating | Stiffeners     | Spacing | End Attachments of Stiffeners | Size of Openings | Height of Sills | Height of Casings |
| Poop Bulkhead ... ..   | —   | .30     | 5 x 3 x 36 L   | 30"     | —                             | —                | —               | —                 |
| Raised Quarter Deck Bulkhead ...   | —   |         |                |         |                               |                  |                 |                   |
| Bridge, After Bulkhead ... ..  | —   | .30     | 5 x 3 x 32 L   | 30"     | —                             | 4-6 x 3-0        | 22              | —                 |
| Bridge, Forward Bulkhead ... ..  |   |         |                |         |                               |                  |                 |                   |
| Forecastle Bulkhead ( <i>Superimposed</i> )  |   |         |                |         |                               | 4-6 x 3-1        | 18              |                   |
| Trunk, Aft ... ..  |   |         |                |         |                               |                  |                 |                   |
| Trunk, Forward ... ..  |   |         |                |         |                               |                  |                 |                   |
| Exposed Machinery Casings on Freeboard or Raised Quarter Decks ...                         |   |         |                |         |                               |                  |                 |                   |
| Exposed Machinery Casings on Superstructure Decks ... ..                                   | 30 x 36   | .30     | 3 1/2 x 3 x 30 | 30"     | —                             | 4-5 x 1-10       | 18              | 7'-10"            |
| Machinery Casings within Superstructures not fitted with Class I Closing Appliances ... .. | 30  | .30     | 3 1/2 x 3 x 30 | 30"     | —                             | 4-6 x 2-0        | 18              |                   |
| Deckhouses on Flush Deck Ships ...   | —   |         |                |         |                               |                  |                 |                   |
| Particulars of Closing Appliances (state if capable of being manipulated from both sides). |   |         |                |         |                               |                  |                 |                   |
| Poop Bulkhead ... ..   | ✓ <i>no openings.</i>                               |         |                |         |                               |                  |                 |                   |
| Raised Quarter Deck Bulkhead ...   | ✓   |         |                |         |                               |                  |                 |                   |
| Bridge, After Bulkhead ... ..  | 3" stormboards, full height, in riveted channels.   |         |                |         |                               |                  |                 |                   |
| Bridge, Forward Bulkhead ... ..  | ✓   |         |                |         |                               |                  |                 |                   |
| Forecastle Bulkhead ( <i>Superimposed</i> )  | 3" stormboards, full height, in riveted channels.   |         |                |         |                               |                  |                 |                   |
| Exposed Machinery Casings on Freeboard or Raised Quarter Decks ...                         | ✓   |         |                |         |                               |                  |                 |                   |
| Exposed Machinery Casings on Superstructure Decks ... ..                                   | <i>Hinged steel doors operated from both sides</i>  |         |                |         |                               |                  |                 |                   |
| Machinery Casings within Superstructures not fitted with Class I Closing Appliances ... .. | <i>Hinged steel doors operated from both sides</i>  |         |                |         |                               |                  |                 |                   |
| Deckhouses on <del>Flush Deck</del> Ships ...  | <i>2 Hinged leak doors operated from both sides</i> |         |                |         |                               |                  |                 |                   |

013545-013552-0023 1/2

# PARTICULARS OF PROTECTION TO OPENINGS, ETC.

The following diagrams should be used to indicate the positions of cargo and coaling hatchways, gangway, cargo and coaling ports, ventilators, companionways, etc., which would affect the seaworthiness of the ship:—



Particulars of fiddle, funnel and ventilator coamings, engine room skylight and other openings in machinery casing tops and their means of closing:—

The engine room skylight, fiddle, funnel & ventilator coamings are of steel strongly constructed.  
Fiddle openings are fitted with hinged steel covers.

Particulars of Flush Bunker Scuttles:—

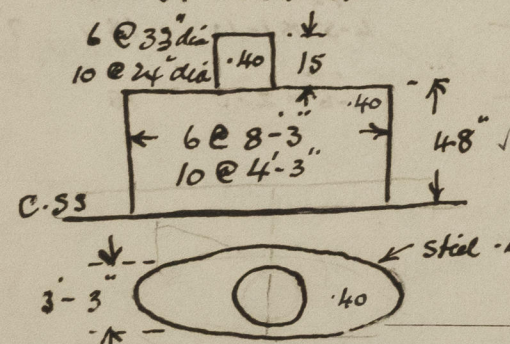
none.

Particulars of Companionways:—

Deck House on Poop of steel strongly constructed, giving access to two quarters and steering gear compartment. 3 doors. 1 steel & 2 light sills 18" high.

Particulars of Ventilators in exposed positions on freeboard and superstructure deck:—

2 Ventilators on Forecastle 24" dia x 30" high x .40 to hold ✓  
2 " " C.S.S. 24 " x 30 " x .40 to bunkers ✓  
10 " " " 12 " x 30 " x .40 to funnel ✓  
10 ventilator boxes on C.S.S. 5" dia 30" x .30 to two quarters ✓



The ventilators have wood plugs & canvas covers.

Particulars of Air Pipes in exposed positions on freeboard, raised quarter, or superstructure deck:—

2 Air pipes 5" dia 18" high to mouth C.I. ✓  
5 " " 4 " 18 " " " " ✓  
8 " " 3 1/2 " 18 " " " " ✓  
1 " " 3 " 18 " " " " ✓  
1 " " 2 " 18 " " " " ✓

The air pipes have wood plugs & canvas covers.

Particulars of Gangway Cargo and Coaling Ports:—

none.

Hermiston.

Particulars of Scuppers and Sanitary Discharge Pipes:—

11 scuppers, each side at C.S.S. deck. ✓ 5" S.D.N.R. Value in foremast well secured to 2" diameter posts, fixed to deck.  
6 Sanitary discharges 15" above freeboard deck with storm valves.

Particulars of Side Scuttles:—

6 Side scuttles each with hinged deadlights in Poop.  
2 " " " " " " " " ✓

Vertical distance of Sill of lowest Side Scuttle above top of keel 39 feet ✓

Particulars of Guard Rails:—

3-10" High. 4 Rods. stanchions spaced about 5ft apart.  
Steel bulwarks abreast midship houses.

Particulars of Gangways, Lifelines, etc.:—

none.

## Particulars of Freeing Arrangements.

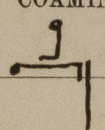
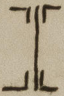
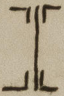
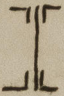
|                  | Length of Bulwark | Height of Bulwark | Size of Freeing Ports   | Number each side | Area each side | Rule area each side |
|------------------|-------------------|-------------------|---|------------------|----------------|---------------------|
| After Well ...   | 5-0               | -                 | One non return screw down valve each side controlled from C.S.S. deck |                  |                |                     |
| Forward Well ... | -                 | -                 |   |                  |                |                     |

State position of each freeing port ... After Well:— ✓  
(F. and A. position and height above deck edge) Forward Well:— ✓

State whether the freeing ports are fitted with shutters, bars, or rails, and give particulars of such:— ✓

Additional area where sheer is less than standard. ✓

PARTICULARS OF PROTECTION TO OPENINGS, ETC.

| HATCHWAYS ON FREEBOARD AND SUPERSTRUCTURE DECKS.                                    |                       |     |     |     |     |   |   |   |                 |                 |  |
|---|-----------------------|-----|-----|-----|-----|---|---|---|-----------------|-----------------|--|
| C.S.S.  |                       |     |     |     |     | FREEBOARD.  |   |   | FB. & C.S.S.    |                 |  |
| Description of Hatchway   | ...                   | ... | ... | ... | ... | No 1  | No 2  | No 3, 5 & 6   | BUNKER HATCHES  | BUNKER HATCHES  |  |
| Dimensions of Hatchway  | ...                   | ... | ... | ... | ... | 18' x 20'   | 28' x 20'   | 30' x 20'   | 4' 7" x 4'      | 4' 7" x 4'      |  |
| COAMINGS  | Height above Deck     | ... | ... | ... | ... | 39"   | 39"   | 39"   | 39"             | 30"             |  |
|   | Thickness             | ... | ... | ... | ... | .50   | .50   | .50   | .45             | .44             |  |
|   | Sides                 | ... | ... | ... | ... | .44   | .44   | .44   | .45             | .44             |  |
|   | Ends                  | ... | ... | ... | ... | .44   | .44   | .44   | .45             | .44             |  |
| *  | Stiffeners            | ... | ... | ... | ... | 11 x 3 1/2 x 40   | 11 x 3 1/2 x 40   | 11 x 3 1/2 x 40   | 11 x 3 1/2 x 40 | 11 x 3 1/2 x 40 |  |
|   | Brackets, Stays       | ... | ... | ... | ... | 1   | 2   | 2   | -               | -               |  |
| HATCH BEAMS   | Number                | ... | ... | ... | ... | 3   | 5   | 5   | -               | -               |  |
|   | Spacing               | ... | ... | ... | ... | equal   | equal   | equal   | -               | -               |  |
|   | Scantling and Sketch  | ... | ... | ... | ... |  |  |  | -               | -               |  |
|   | Bearing Surface       | ... | ... | ... | ... | 3 1/2"  | 3 1/2"  | 3 1/2"  | -               | -               |  |
| FORE AND AFTERS   | Number                | ... | ... | ... | ... | NONE  |   |   |                 |                 |  |
|   | Spacing               | ... | ... | ... | ... |   |   |   |                 |                 |  |
|   | Unsupported Lengths   | ... | ... | ... | ... |   |   |   |                 |                 |  |
|   | Scantling* and Sketch | ... | ... | ... | ... |   |   |   |                 |                 |  |
| HATCH COVERS  | Material              | ... | ... | ... | ... | WP.   | WP.   | WP.   | WP.             | WP.             |  |
|   | Thickness             | ... | ... | ... | ... | 3"  | 3"  | 3"  | 2 1/2"          | 2 1/2"          |  |
|   | How fitted            | ... | ... | ... | ... | F+A.  | F+A.  | F+A.  | athwart         | athwart         |  |
|   | Bearing Surface       | ... | ... | ... | ... | 3"  | 3"  | 3"  | 3"              | 3"              |  |
| Spacing of Cleats   | ...                   | ... | ... | ... | ... | 24"   | 24"   | 24"   | 24"             | 24"             |  |
| Number of Tarpaulins  | ...                   | ... | ... | ... | ... | 2   | 2   | 2   | 1               | 2               |  |

\* Are wood fore and afters steel shod at all bearing surfaces? ☒   
 Are battens and wedges efficient and in good condition? ☒   
 Are tarpaulins in good condition and in accordance with rule requirements? ☒   
 Are lashings provided in accordance with rule requirements? ☒   
 \* Bull-angle stiffeners at fore end of No 2, 3, 5 & 6 Hatchways with brackets   
 After " " No 1, 2, 5 & 6 " "   
 Particulars of any special features:— Brackets at fore & aft end of No 4 Hatch   
 2 " " after end of No 3 "   
 1 " " fore " of No 1 "

There are no special features

SMALL HATCHWAYS

18 Trimming hatches on fbd deck.   
 2' x 2' with 9 x 3 1/2 x 42 BA Coamings   
 40 Steel covers 6 butterfly clips   
 1 Hatch 4 x 4 in fore space.   
 9 x 3 x 46 BA coaming, 2 1/2" covers   
 3 Red. cleats spaced about 20".   
 1 Tarpaulin

Endorsement at first survey and at surveys for renewal of Certificate:—

The fittings and appliances are in accordance with the particulars shown on this form (or as now modified) and are in good condition.



© 2021

Lloyd's Register Foundation