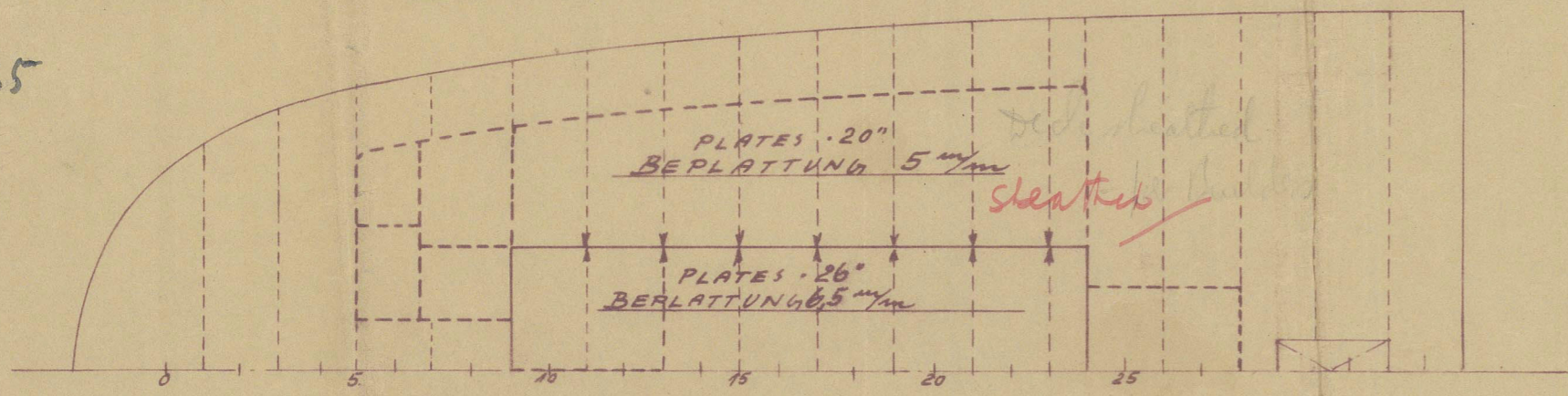
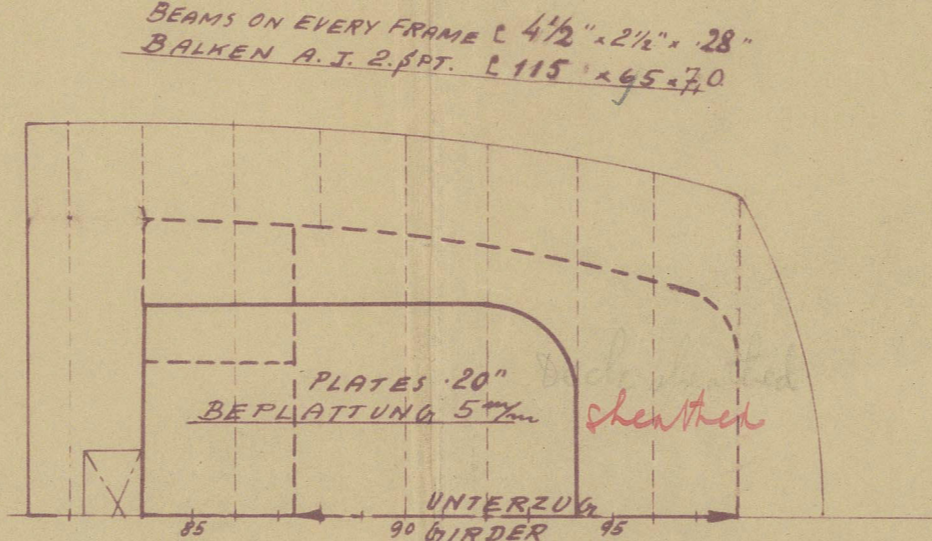


BEAMS ON EVERY FRAME @ $4\frac{1}{2}'' \times 2\frac{1}{2}'' \times .28''$
BALKEN @ $115 \times 65 \times 7.0$ A.J. 2. PANT.

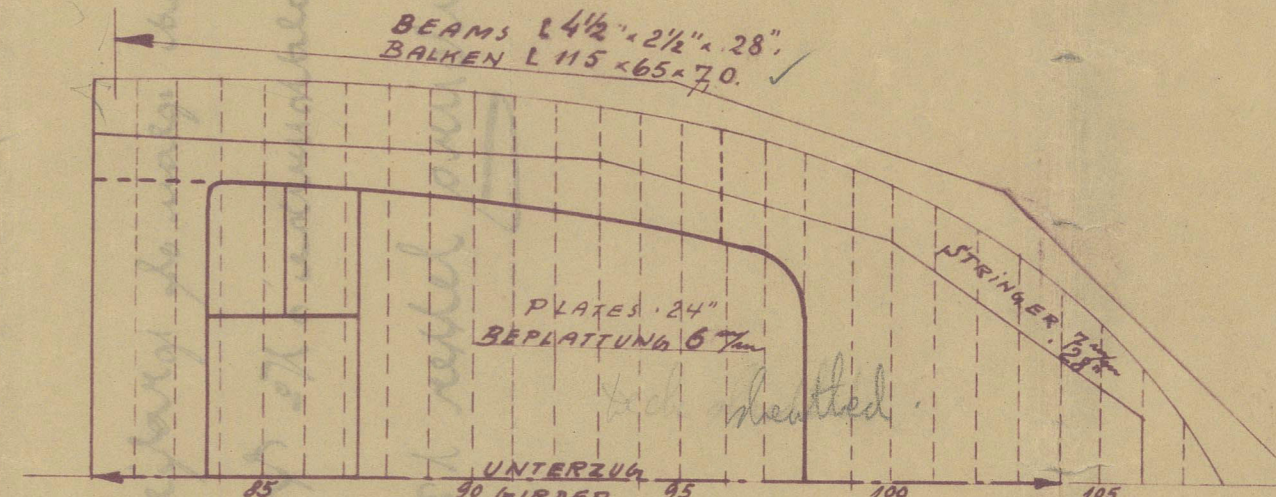
15.4.35



BOOTSDECK
BOAT DECK

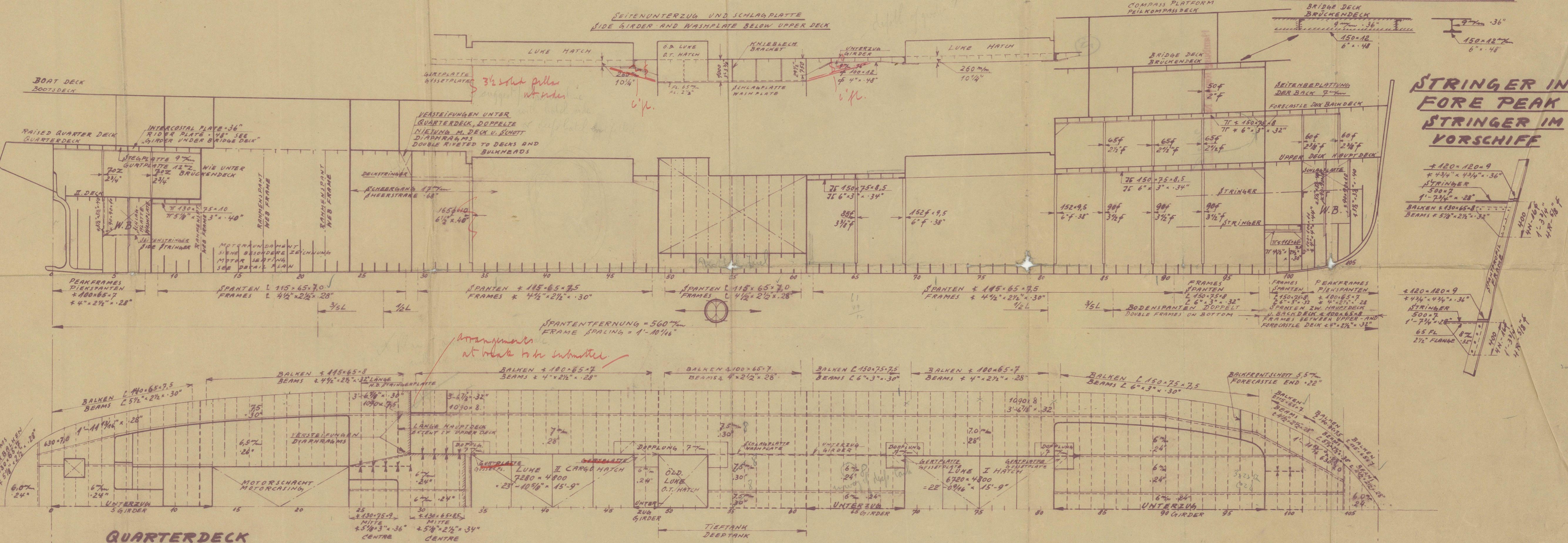


BRÜCKENDECK
BRIDGE DECK



BACKDECK
FORECASTLE DECK

GIRDER UNDER BRIDGE DECK
UNTERZUG UNTER BRÜCKENDECK



QUARTERDECK
RAISED QUARTER DECK

HAUPTDECK
UPPER DECK

M. S. 741

M.S. 741

EISEN-LÄNGSSCHNITT

LONGITUDINAL SECTION.

M: $1 \div 100$

1:100

ABMESSUNGEN:

DIMENSIONS:

LÄNGE ZW. D. LOTEN $60,045 \text{ m} = 197'-0''$

LENGTH BETWEEN PERPENDICULARS 197'-0"

BREITE AUF SPANTEN 10,516 m = 34'-6"

BREADTH MOULDED 34'-6"

SEITENHÖHE H.D. 4,115 m = 13'-6"

DEPTH MOULDED TO UPPER DECK 13'-6"

SEITENHÖHE Qu.D. 5,106 m = 16'-9"

SCANTLING NUMERALS: $L \times D = 2666$; $L \times (B + D) = 9480$ $\frac{L}{D} = 14.63$

KLASSE: LLOYDS A.1 FOR SERVICE IN THE GULF OF GUINEA
WITH A FREEBOARD CORRESPONDING TO A TROPICAL LOAD
DRAFT OF 10'-0" (CARRYING VEGETABLE OIL IN DEEPTANKS)

CLASS: HOYDS A.1 FOR SERVICE IN THE GULF
OF GUINEA WITH A FREEBOARD CORRESPONDING TO A TROPICAL LOAD DRAFT OF 10'-0" (CARRYING VEGETABLE OIL IN DEEPTANKS)

M.S. 741
ZEICHNUNG N° 1.

OF APPROVED BY THE UNITED
AFRICA COM. LTD. LONDON 6.E.1935.
GEÄNDERT NACH DER VON DER
REEDEREI AM 6.E.1935 GENEH-
MIGTEN ZEICHNUNG.
OF APPROVED BY HYOVS
REGISTER 4.I.1935.
GEÄNDERT NACH DER VOM BRIT. HOYD
AM 4.I.1935 GENEHMIGTEN ZEICHNUNG.

II. DECK

IN CASES OF DOUBT ONLY THE GERMAN TEXT
AND MEASUREMENTS WILL BE DECISIVE.

013536-013544 - 0109 Lloyd's Register Foundation

Revised plan of profile & desks

Gawaldsmurke's No. 441

Hamburg letter 13/4.35

(2)

Hamburg Report Nr. 2102 F



© 2021

Lloyd's Register
Foundation