

LLOYD'S REGISTER OF SHIPPING

Index No. 45921
(For London Office only.)

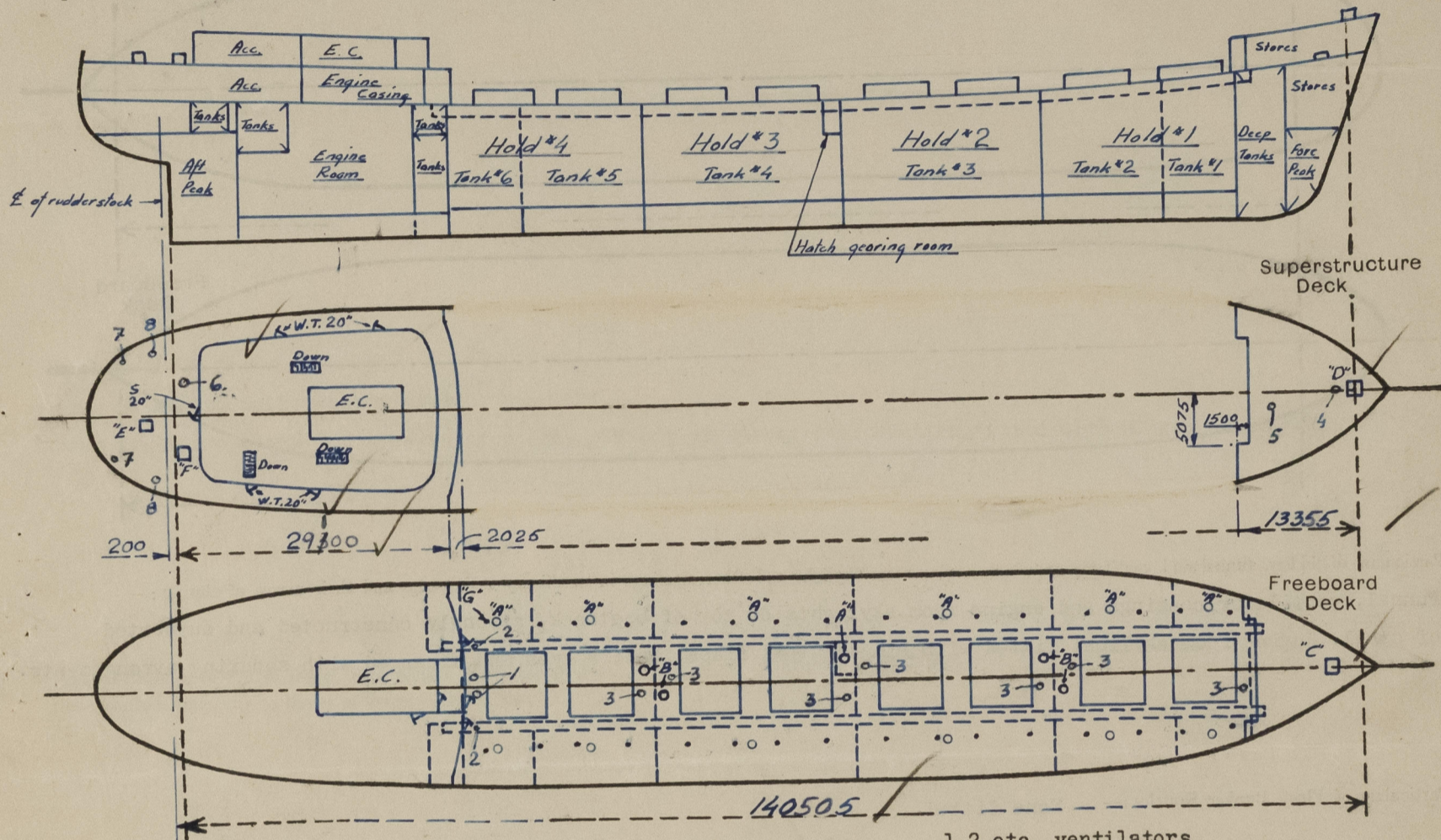
UNITED WITH THE BRITISH CORPORATION REGISTER

SURVEYS FOR FREEBOARD.

(CONDITIONS OF ASSIGNMENT.)

Ship's Name "ARIEPIOG" ESS1 KAR1 Port of Survey Göteborg
Official Number 9636 Surveyor's Signature Boji Roslund
Nationality and Port of Registry NORWEGIAN, OSLO Date of Survey Whilst building
Swedish, Stockholm

Disposition and dimensions of superstructures, trunks, deckhouses, machinery casings and wood sheathing to be inserted in the diagrams and tabular statement:—



G = W.T. hatches for grain bulkheads. 16 each sides. 1,2 etc. ventilators
S = Steel door. W.T. = Watertight door Height of sills measured from top of deck.

Particulars of Superstructures, Trunks, Casings, Deckhouses.

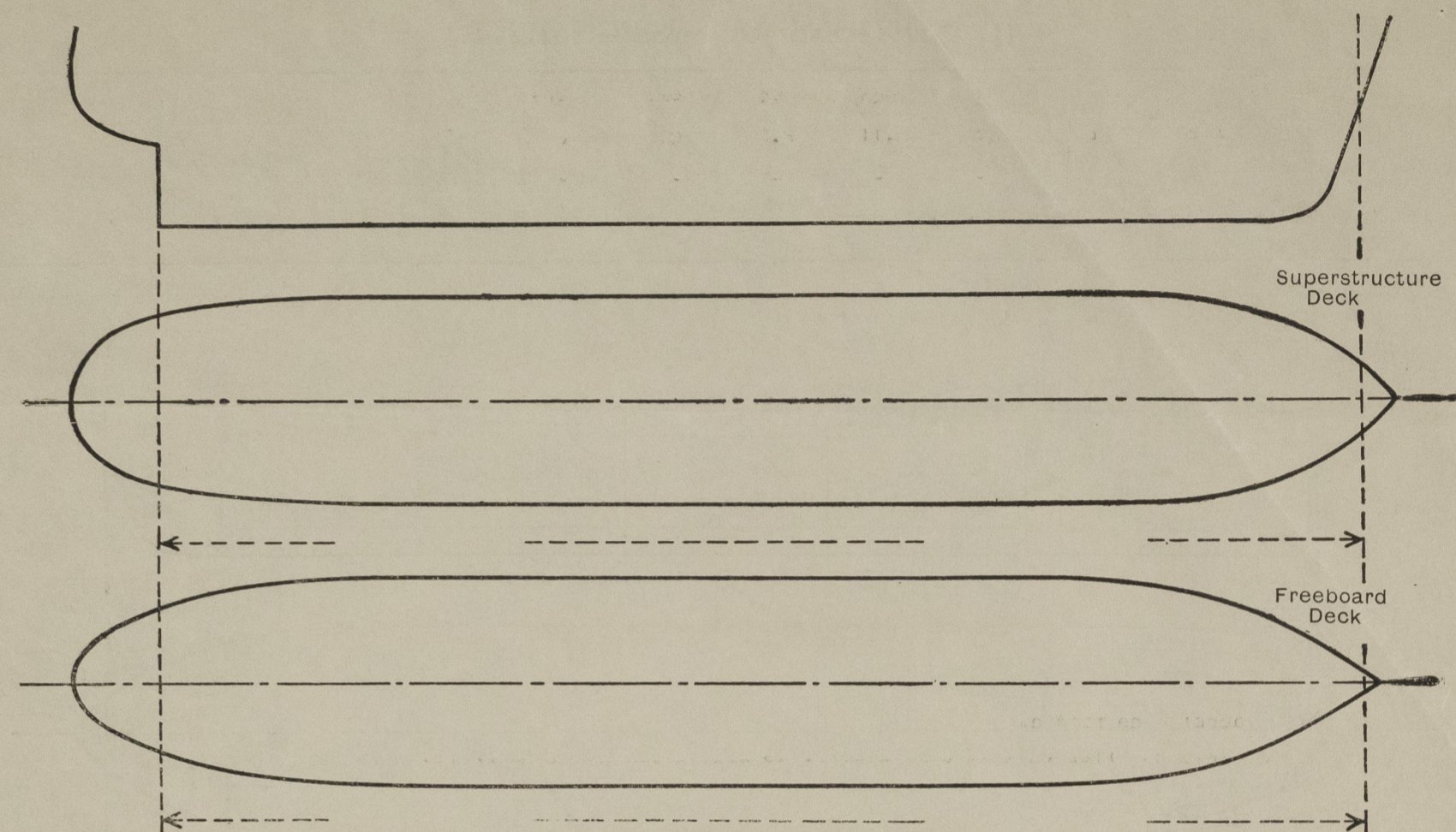
	Coaming	Plating	Stiffeners	Spacing mm.	End Attachments of Stiffeners	Size of Openings	Height of Sills	Height, Beam to Beam
Poop Bulkhead		10.0	7 x 3 1/2 x 48 T	Max 750	Top: Bkt. weld	1290x650	610	
Raised Quarter Deck Bulkhead								
Bridge, After Bulkhead								
Bridge, Forward Bulkhead								
Forecastle Bulkhead		8.0	3 x 2 x 40 T	Max 750	To beam top none btm.	1550x950	560	
Trunk, Aft								
Trunk, Forward		6.5	75 x 50 x 8 T	830	None	1500x760	460	
Exposed Machinery Casings on Freeboard	Sides	6.5	75 x 50 x 8 T	730	None	None	510	
Exposed Machinery Casings on Superstructure Deck	Aft end	6.5	75 x 50 x 8 T	Max 850	None	1500x710		
Exposed Machinery Casings within Superstructures not fitted with Class I Closing Appliances	Forw. end	6.5	75 x 50 x 8 T	Max 830	None	None		
Deckhouses and Pump Room Entrances		5.5	None					

Particulars of Closing Appliances (state if capable of being manipulated from both sides).

Poop Bulkhead	Hinged steel W.T. doors, operated from both sides.
Raised Quarter Deck Bulkhead	-
Bridge, After Bulkhead	-
Bridge, Forward Bulkhead	-
Forecastle Bulkhead	Steel plates secured by hook bolts not passing through bulkhead
Exposed Machinery Casings on Freeboard	Hinged steel doors, operated from both sides.
Exposed Machinery Casings on Superstructure Deck	None
Machinery Casings within Superstructures not fitted with Class I Closing Appliances	
Deckhouses and Pump Room Entrances	

PARTICULARS OF PROTECTION TO OPENINGS, ETC.

The following diagrams should be used to indicate the positions of cargo and coaling hatchways, gangway, cargo and coaling ports, side scuttles, scuppers, ventilators, companionways, etc., which would affect the seaworthiness of the ship :-



Particulars of filley, funnel and ventilator coamings, engine room skylight and other openings in machinery casing tops and their means of closing :-

Funnel, ventilator coamings and engine room skylights on top of boatdeck, strongly constructed and supported of steel. Engine room skylight fitted with hinged steel flaps, bull's eyes and arranged with securing arrangements.

Particulars of Flush Bunker Scuttles :- None fitted.

Particulars of Companionways :- None fitted. Entrance to crew's accomodation on freeboard deck aft through steel deckhouse on poop deck or through openings in poop bulkhead. Doors are operable from both sides.

Particulars of Ventilators in exposed positions on freeboard and superstructure decks :- All ventilators on freeboard- and superstructure decks are 915 mm. high or above, efficiently constructed and supported and supplied with efficient means of closing by means of steel hoods and canvas covers, and constructed in compliance with the Socceity's Rules.

1. 16" ventilators, height = 3950 mm, coaming thickness 11 mm.
2. 9" " " = 1400 " " 10.5 mm.
3. 22" " " = 1400 " " 11 mm.
4. 16" " " = 1150 " " 10.5 mm.
5. 12" " " = 915 " " 8.5 mm.
6. 16" " " = 1200 " " 10.5 mm.
7. 9" " " = 1130 " " 10 mm.
8. 16" " " = 1030 " " 10.5 mm.

Particulars of Air Pipes in exposed positions on freeboard, raised quarter, or superstructure decks :- All air pipes are of steel, goose neck type, 915 mm. high and fitted with efficient means of closing and wire gauze as necessary.

Particulars of Gangway Cargo and Coaling Ports :- None fitted.

Particulars of Scuppers and Sanitary Discharge Pipes :- Scuppers and sanitary discharges from accomodation aft are led overboard through common collection pipes at forward and aft end of engine room, port and starboard, below L.W.L. Each pipe line fitted with sluice valve and a non-return valve at the ship's sides controlled from accessible position in the engine space. Scuppers from accomodation in poop are also led down to engine room bilges, fitted with water trap. The forecastle space is drained through forecastle bulkhead by screw holes fitted with screw plugs with chain attachments.

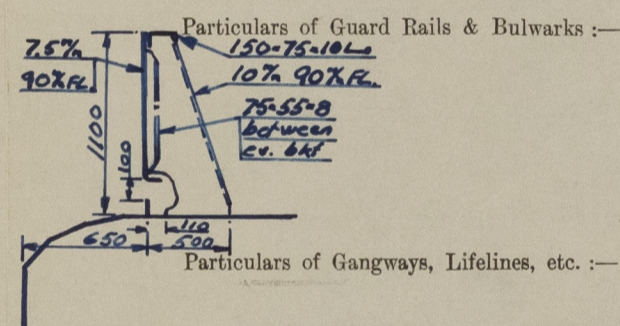
Particulars of Side Scuttles & Deadlights :-

Below freeboard deck: None fitted.

Above freeboard deck: Scuttles in poop side plating of strong construction fitted with hinged deadlights.

Vertical distance of Sill of lowest Side Scuttle above top of keel About 14500 mm.

Distance from amidships to centre of lowest Side Scuttle



Bulwark is fitted on main deck and poop deck in way of accomodation of substantial construction as per sketch. Stanchion spacing = 1500 mm. Guard rails 1200 mm high are fitted on forecastle deck and aft part of poopdeck of substantial construction with 3 rods and stanchion spacing = 1100 mm.

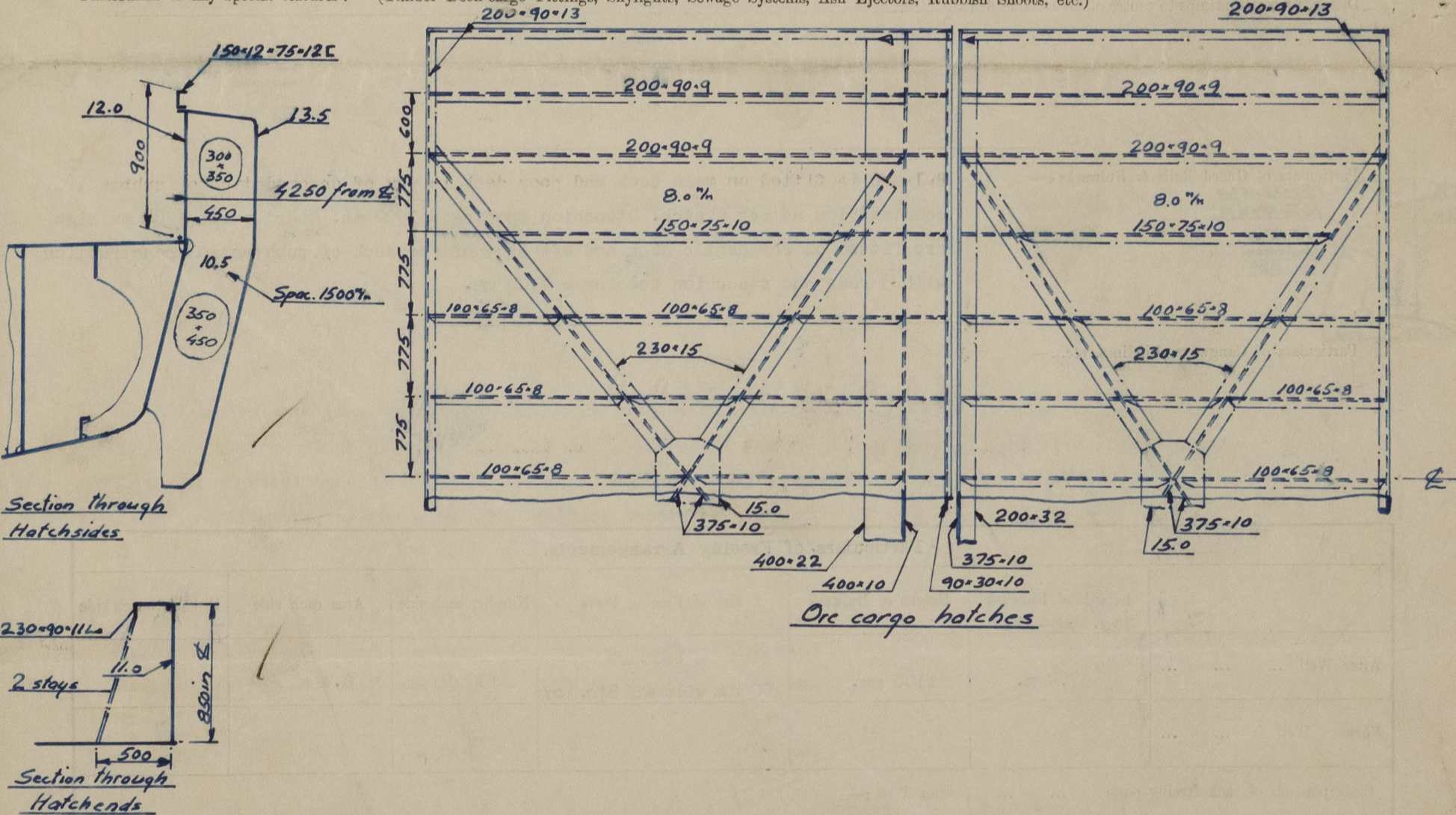
Lifelines provided.

Particulars of Freeing Arrangements.						
	Length of Bulwark Nos. 38 - 72	Height of Bulwark	Size of Freeing Ports	Number each side	Area each side	Rule area each side
After Well	97.7 m.	1100 mm.	Slot in bulwark 100 mm. wide and 84m. long	1	8.4 m ²	
Forward Well						
State position of each freeing port { After Well :— (F. and A. position and height above deck edge) { Forward Well :—						
State whether the freeing ports are fitted with shutters, bars, or rails, and give particulars of such :—						
Additional area where sheer is less than standard.						

PARTICULARS OF PROTECTION TO OPENINGS, ETC.

HATCHWAYS ON FREEBOARD AND SUPERSTRUCTURE DECKS.										
		Freeboard deck				Poop deck				
Description of Hatchway	...	Nbs. 1-8 Ore cargo hatches	"A" To side tanks	"B" To holds	"G" To holds	"C" To stores	"D" To stores	"E" To stores	"F" To stores	
Dimensions of Hatchway	...	9150x8	670	670	250x170	1220x1220	950x760	990x800	1100x1100	
COAMINGS	Height above Deck	...	250	610	250	230	610	460	460	
	Thickness { Sides	...	See	10	10	10.5	11.0	9.0	9.0	
	Stiffeners... { Ends	...	sketches	10	10	10.5	11.0	9.0	9.0	
	Brackets, Stays { Ends	...	-	-	-	-	-	-	-	
HATCH BEAMS	Number	...								
	Spacing	...								
	Scantling and Sketch	...								
	Bearing Surface	...								
FORE AND AFTERS	Number	...								
	Spacing	...								
	Unsupported Lengths	...								
	Scantling* and Sketch	...								
HATCH COVERS	Material	...	Steel	Steel	Steel	Steel	Steel	Steel	Steel	
	Thickness	...	12.0	12.0	12.0	9.0 stiffened	9.0 stiffened	9.0 stiffened	9.0 stiffened	
	How fitted	...	see	2 hinges	2 hinges	8-3/4 bolts	2 hinges	2 hinges	2 hinges	
	Bearing Surface	...	sketch	4-1" toggles	4-1" toggles	60	4 toggles	2 toggles	4 toggles	4 toggles
Spacing of Cleats	...	Closed W.T	Closed W.T	Closed W.T	Closed W.T	Closed W.T	Closed W.T	Closed W.T	Closed W.T	
Number of Tarpaulins	...	1" bolts	1" bolts	1" bolts	1" bolts	1" bolts	1" bolts	1" bolts	1" bolts	
		Max. space 750mm	✓	✓	✓	✓	✓	✓	✓	
*Are wood fore and afters steel shod at all bearing surfaces?										
Are battens and wedges efficient and in good condition?										
Are tarpaulins in good condition and in accordance with rule requirements?										
Are lashings provided in accordance with rule requirements?										
Are wood covers fitted with galvanised end bands?										

Particulars of any special features:— (Timber Deck-cargo Fittings, Skylights, Sewage Systems, Ash Ejectors, Rubbish Shoots, etc.)



© 2021

Lloyd's Register Foundation