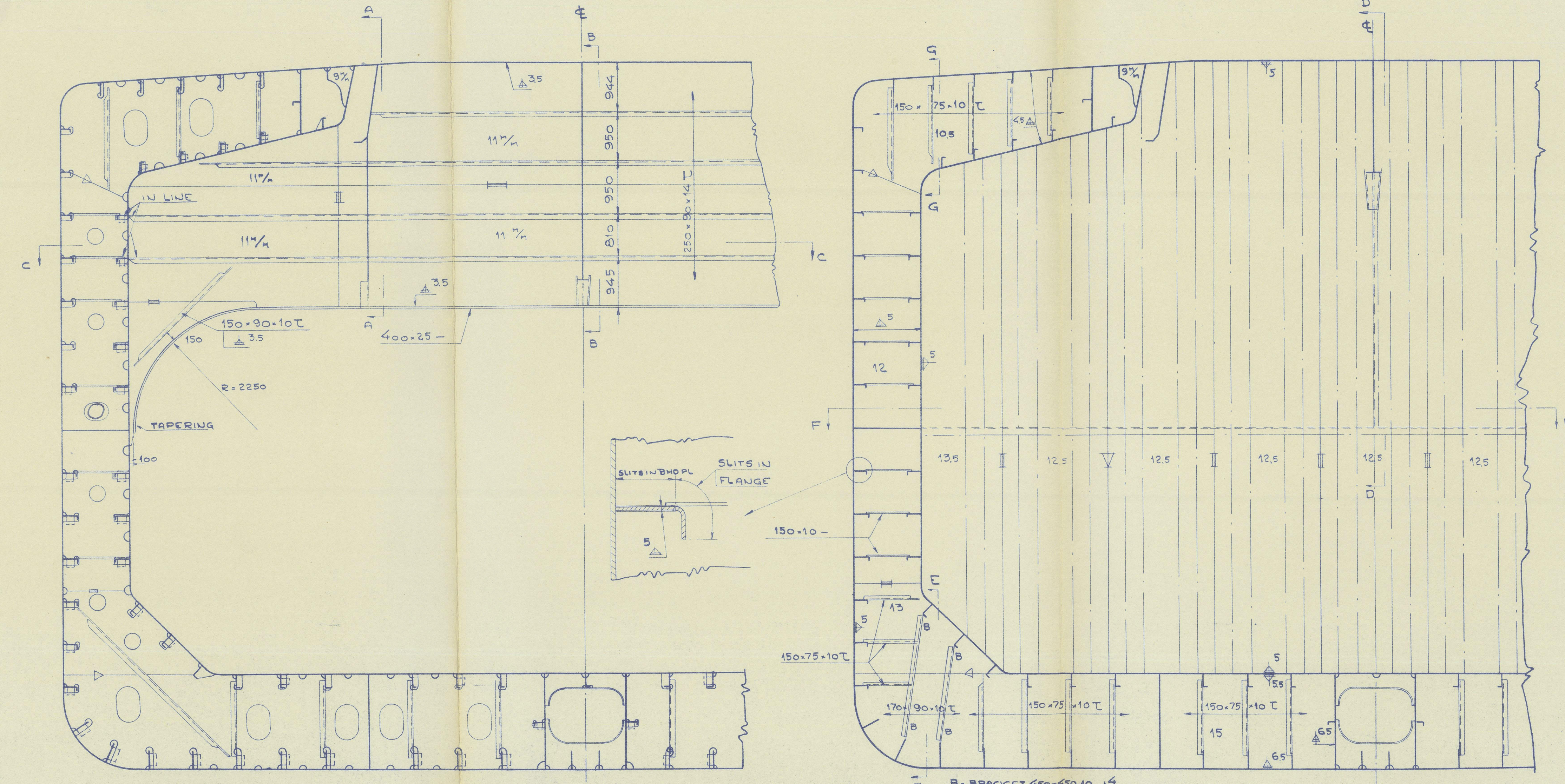
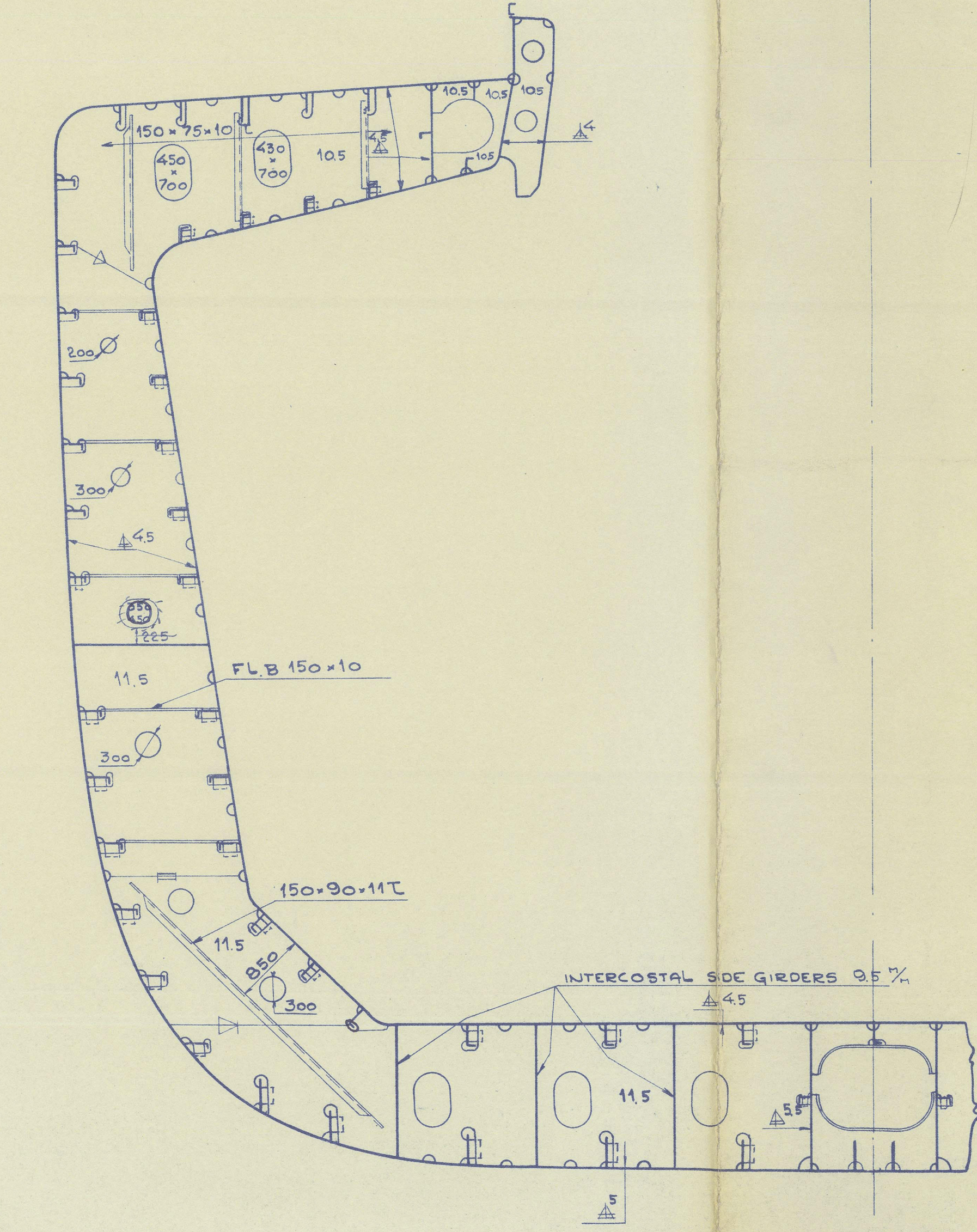
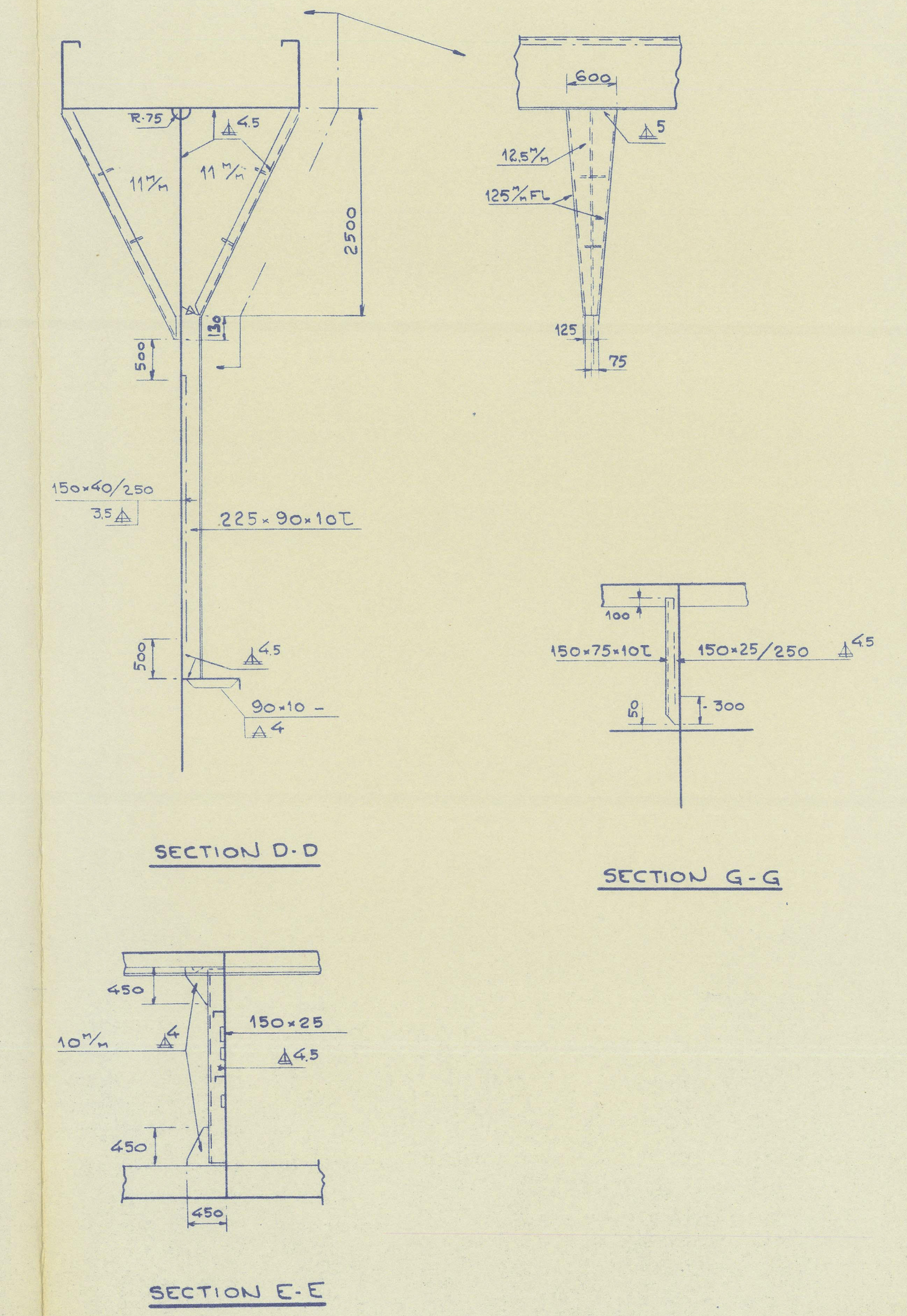


WEB FRAME  
SPACING 3000mm

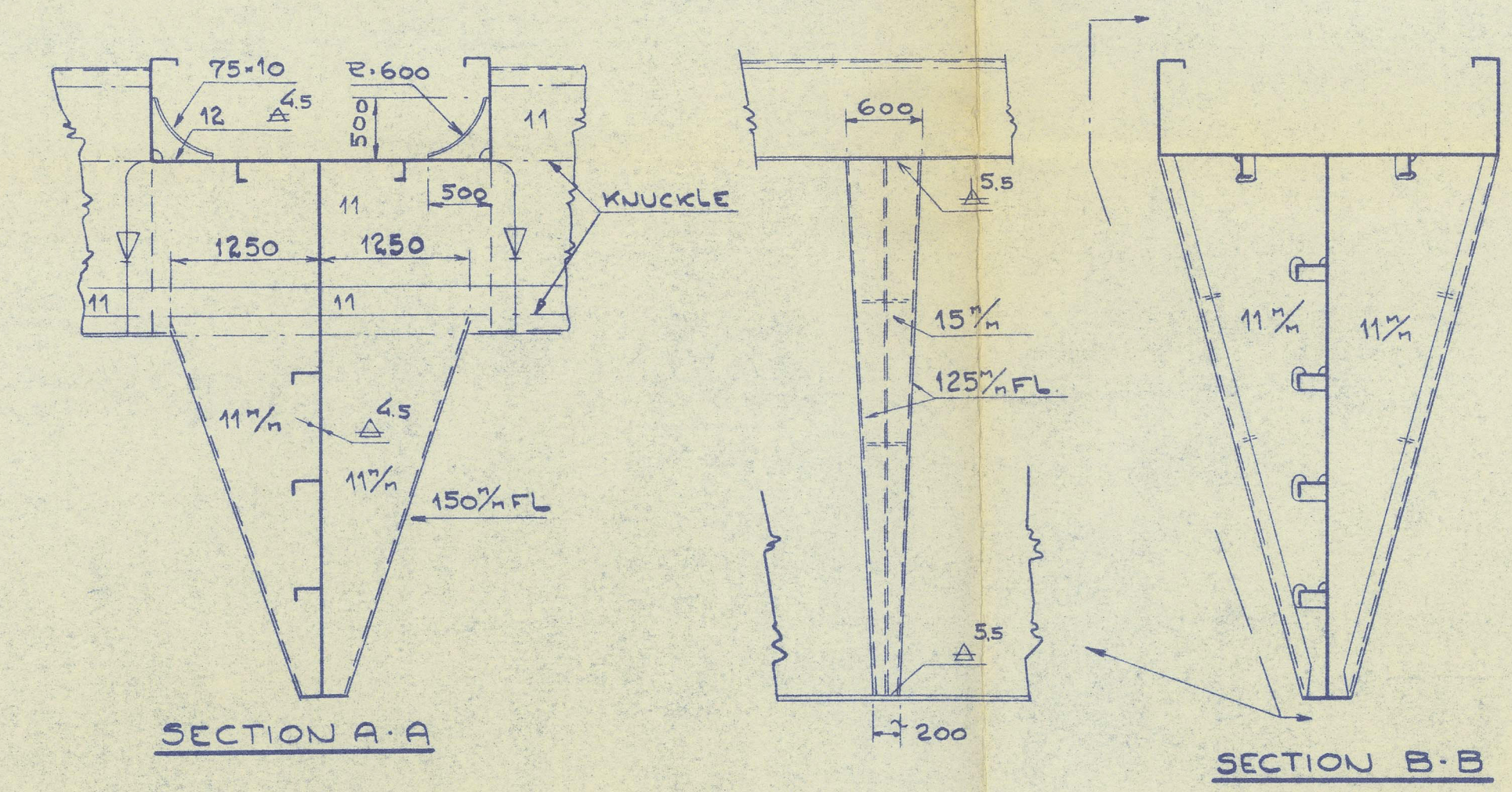
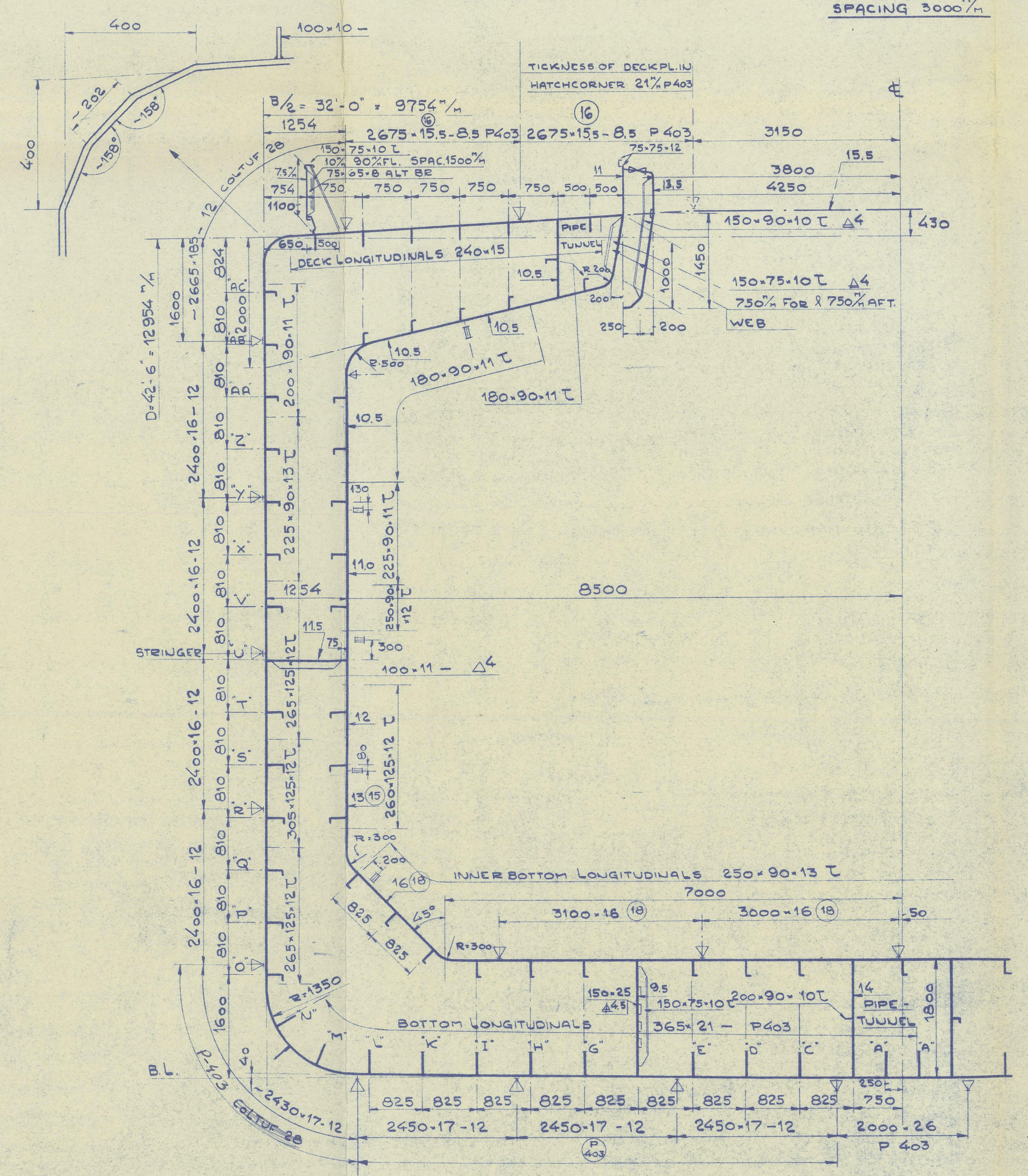


WEB BETWEEN HATCHES

BULKHEAD

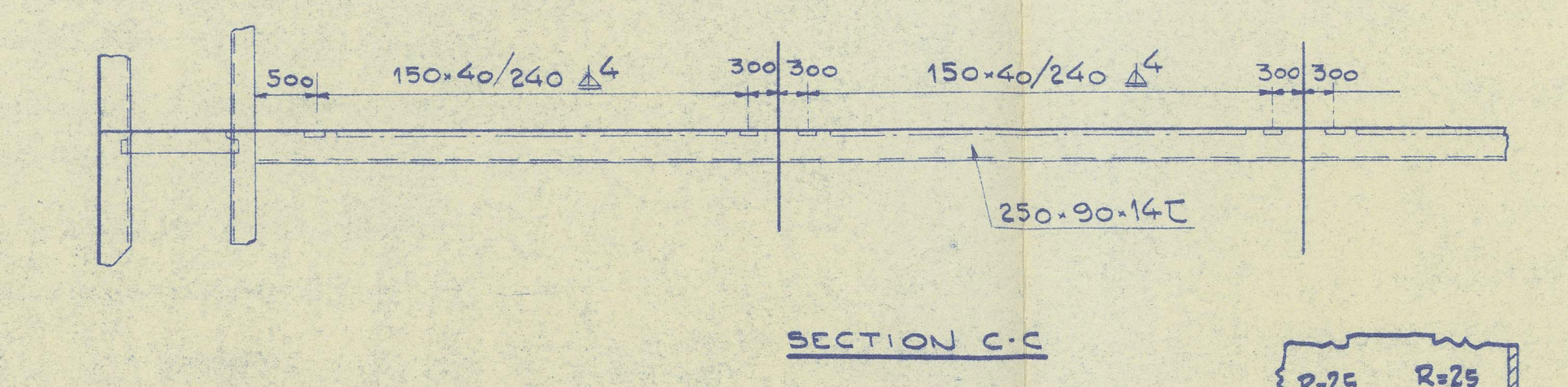


WEB FRAME  
FORW. 0.25L

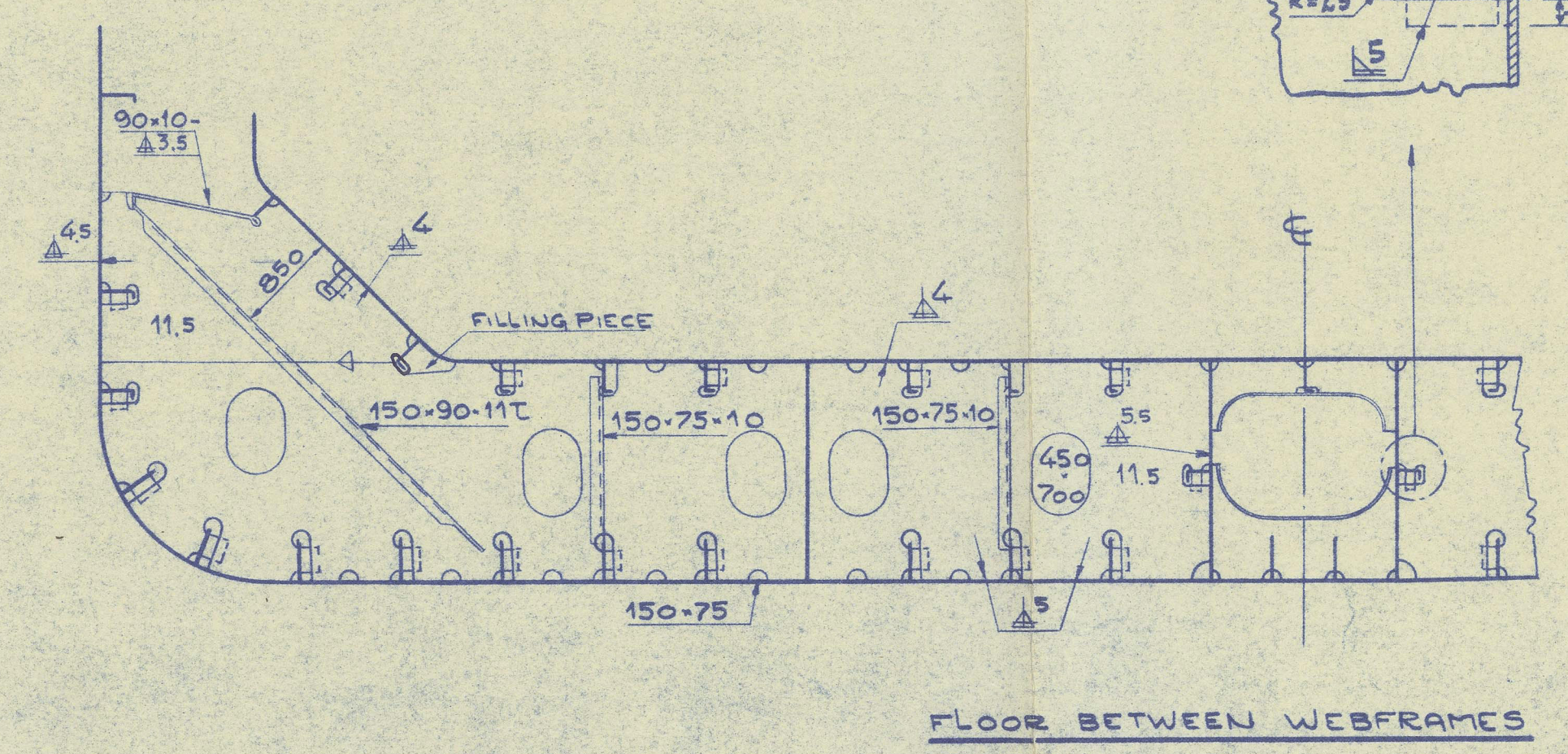


SECTION A-A

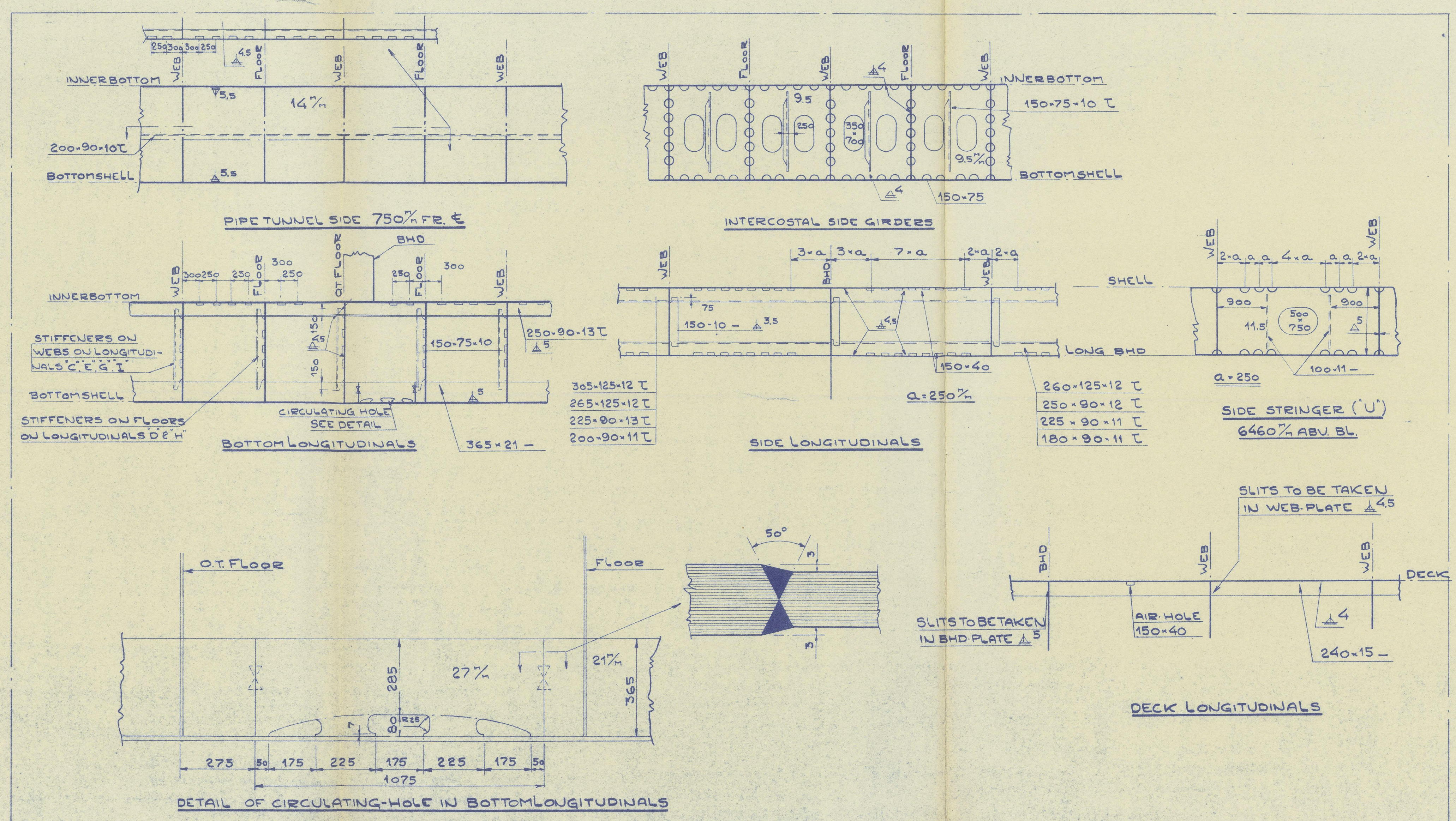
SECTION B-B



SECTION C-C



FLOOR BETWEEN WEBFRAMES



DIMENSIONS:  
LENGTH P.P. 460.0 - 140.208 MET.  
BREADTH MOULDED 64.0 - 19.507 --  
DEPTH -- 42.6 - 12.954 --  
NO SHEER IN MAINDECK  
SUMMER MOULDED DRAUGHT FROM TOP OF KEEL 27.2 - 8.281 MET.

90THENBURG FIRST ENTRY REPORT NO 22160

CLASS:  
LLOYD'S REGISTER + 100A1 OEE CARRIER  
STRENGTHENED FOR NAVIGATION IN ICE

'LONGITUDINAL FRAMING'  
ELECTRICALLY WELDED

○ - OWNER'S REQUIREMENT

RECORDS DEPT.  
LONDON.

2

AKTIEBOLAGET GÖTAVÄRKEN	
AS BUILT	
M/S 710-711 ARJEPLOG	
MIDSHIP - SECTION	
BETWEEN FR 40 AND 72	
RATED BY:	SCALE: 1:50, 1:10, 1:1
DESIGNED BY:	DATE: 16-7-55
CHECKED BY:	PACKED BY:
REVISION:	1

CORRECTED AS APPROVED BY LLOYD'S 30-7-55 213793