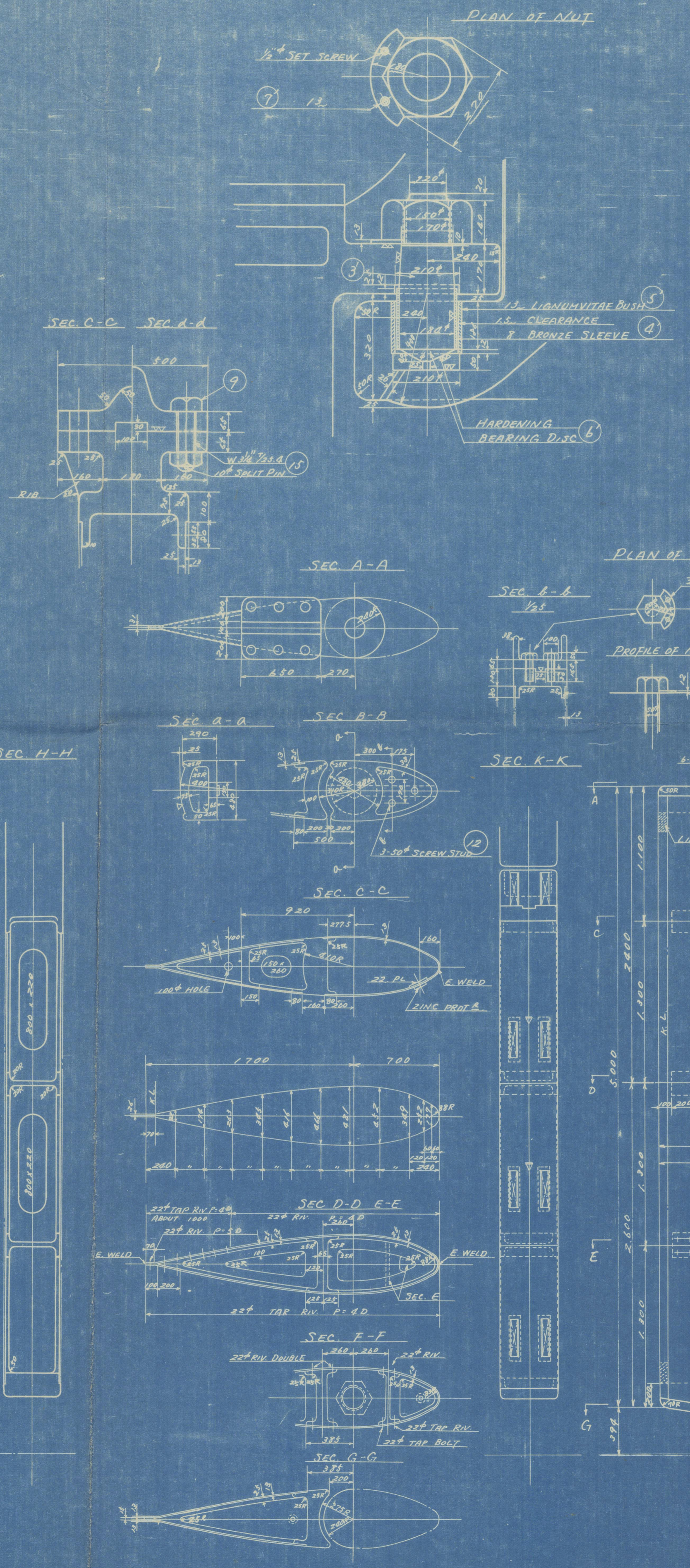
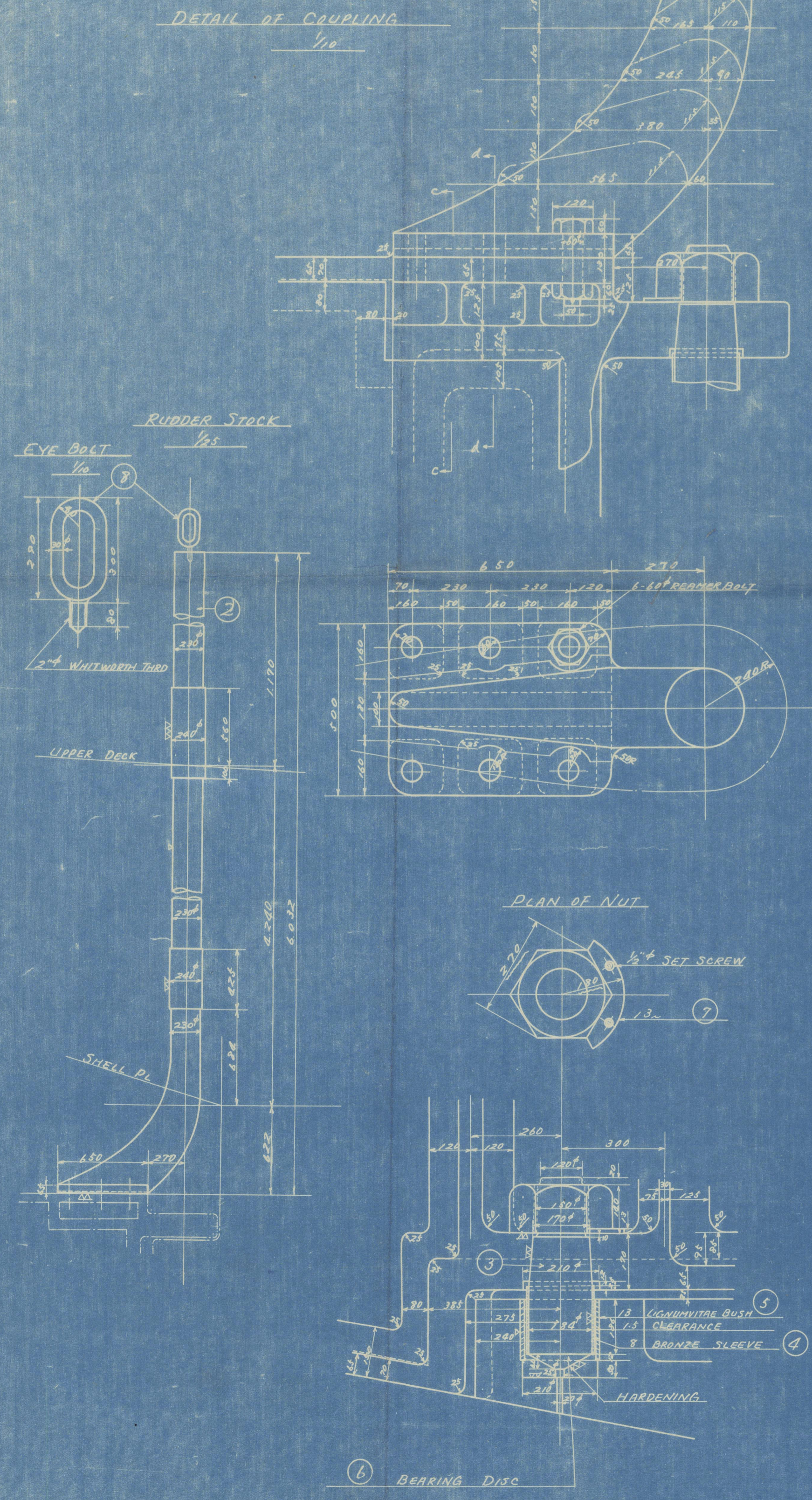


Office



ITEM	MATERIAL	PCS
1 RUDDER FRAME	CAST STEEL	1
2 " STOCK	FORGED STEEL	1
3 PINTLE WITH NUT	"	1
4 BUSH (FOR PINTLE)	GUN METAL	1
5 LINING	LIGNUMVITAE	1
6 BEARING DISC	HARD STEEL	1
7 SET PIECE	MILD STEEL	1
8 PINTLE WITH NUT	FORGED STEEL	1
9 BUSH (FOR PINTLE)	GUN METAL	1
10 LINING	LIGNUMVITAE	1
11 BEARING DISC	HARD STEEL	1
12 SET PIECE	MILD STEEL	1
13 EYE BOLT	FORGED STEEL	1
14 REAMER BOLT (1/2") & NUT	"	6
15 RUDDER PLATE	MILD STEEL	8
16 SCREW PLUG	GUN METAL	2
17 SCREW STUD	FORGED STEEL	3
18 DOUBLE PLATE	MILD STEEL	6
19 LINER	"	2
20 SPLIT PIN	"	6
21 BOLTED PLATE (S. SIDE ONLY)	"	1

A - AREA OF RUDDER AFTER CENTER LINE OF PINTLE = 8.64' (2.638 FT.)
 D - DISTANCE FROM CENTER OF GRAVITY OF AREA "A" TO CENTER LINE OF PINTLE = 0.85' (0.259 FT.)
 S - MAX. SEA SPEED OF SHIP = 12 KNOTS

FOR APPROVAL

TO LLOYD'S REGISTER OF SHIPPING

FOR APPROVAL

SHIP NO. YUKIKAWA MARU.
 TITLE: RUDDER.
 SCALE: 1/25, 1/10.
 KAWASAKI HEAVY INDUSTRIES CO. LTD.
 SHIPBUILDING YARD
 KOBE, JAPAN
 SHIPBUILDING DEPARTMENT DESIGN SECTION
 CHIEF OF DEPARTMENT: _____
 CHECKED BY: _____
 DRAWN BY: _____
 DATE: JUN. 31, 1950.
 DRAWING NO. _____

雪川丸

舵

尺度 1/25, 1/10.
 川崎重工業株式会社造船工場
 造船部
 部長 渡辺 謙
 監製 渡辺 謙
 製図 25.1.31. 中村
 年月日 25.1.31. 中村
 図番

"YUKIKAWA MARU" ★

Rudder

RECORDS DEPT.
LONDON

5



© 2021

Lloyd's Register
Foundation

013536 013544-0024