

13 APR 1946

# MIDSHIP SECTION ETC.

SCALE 1/2" = 1 FOOT.

CLASS 100 A1\* LLOYDS WITH FREEBOARD CORRESPONDING TO A SUMMER Moulded DRAUGHT OF 20'-8 1/2"

## DIMENSIONS

LENGTH B.P. 32'-0"  
BREADTH MLD 46'-4"  
DEPTH MLD TO UPPER DECK 24'-9"  
DEPTH MLD TO RAISED QUARTER DECK 29'-7" (RATHEE, 29'-4" NORMAL SHIP)  
RAISED QUARTER DECK 4'-10"

## LLOYDS NUMERALS

1st LONGITUDINAL NO L.O. = 32'-24'-75 17'2"  
2nd LONGITUDINAL NO L.O. (B+D) = 32'-24'-31-85-15 = 22'17"  
4th TO UPPER DECK 312 - 24'-75 = 12'61"  
4th TO RAISED QUARTER DECK 312 + 23'-58 = 10'55"  
PERCENTAGE OF FREIGHTS (R.O.D. + POOR = 197'00) = 71.3  
L.O. TO UPPER DECK = 24'-75 - 35 = 21'22"  
L.O. TO RAISED QUARTER DECK = 29'-58 - 55 = 26'0"

ALL BULG ANGLES ARE NEW BRITISH STANDARD SECTIONS.

## EQUIPMENT NUMBER

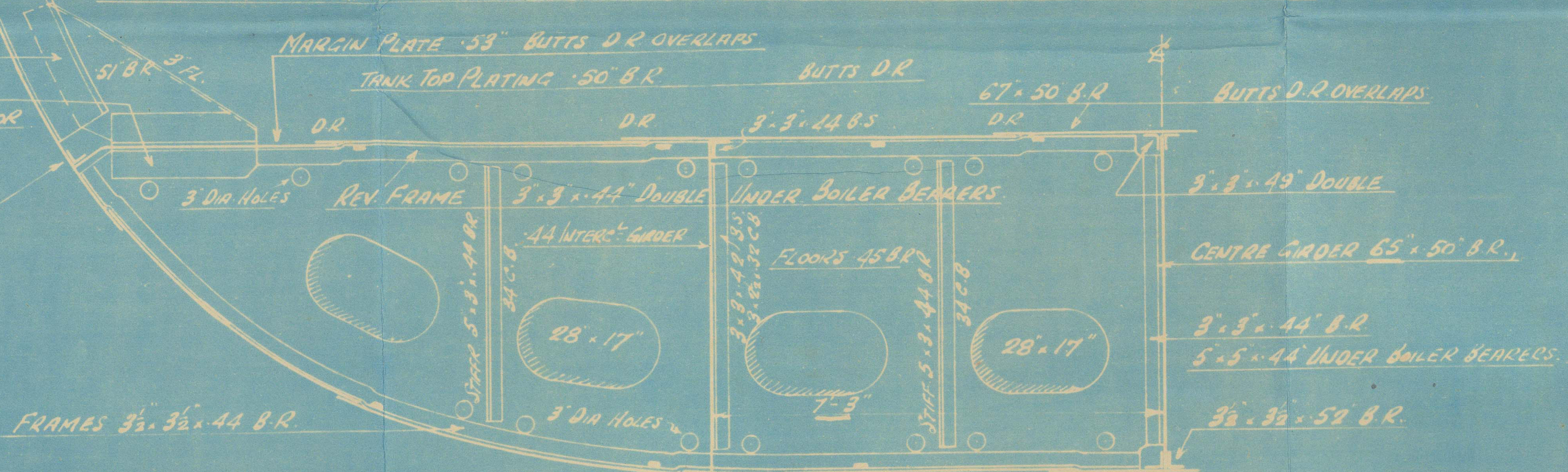
L.O. (B+D) = 312' (46'39" + 24'75") = 22'17'-0"  
RAISED QUARTER DECK 197' + 4'8" = 312' 5"  
POOR 75' + 27'25" = 102' 5"  
FORECASTLE 75' + 27'25" = 102' 5"  
LOWER DECKHOUSE 5' + 20'0" = 25' 0"  
UPPER DECKHOUSE 5' + 20'0" = 25' 0"  
HOUSE ON POOR DECK 2' + 20'0" = 22' 0"  
EQUIPMENT NUMBER 240' 79' 7" LETTER U

## EQUIPMENT

2 BOWERS ANCHORS STAINLESS 45 CWT  
1 5' DEEP ANCHOR (EX STAIN) 19 CWT  
225 FATHOMS STEEL CABLE 14 1/2"  
90 FATHOMS STEEL CABLE 4 1/2"  
100 FATHOMS TAILING STEEL WIRE 4"  
2 x 30 FATHOMS HANGLERS 2 1/2 (4")  
2 x 30 FATHOMS WARRERS 2 1/2 (4")

## MAIN FRAMES IN BOILER ROOM 27' APART (L = 23'9")

MAIN FRAMES TO R.O. DECK & POOR DECK ALTERNATELY 11'-35'-58' 8" A OR 12'-35'-45' 8" A  
BEAM KNEES AT R.O. DECK 31'-29'-40" FLANGED 8" 7-16 RIVETS  
POOR DECK DECK INTERMEDIATE FRAMES AT 10' FROM AFT 4'-8'-34" 0" NOT ATTACHED AT LOWER ENDS



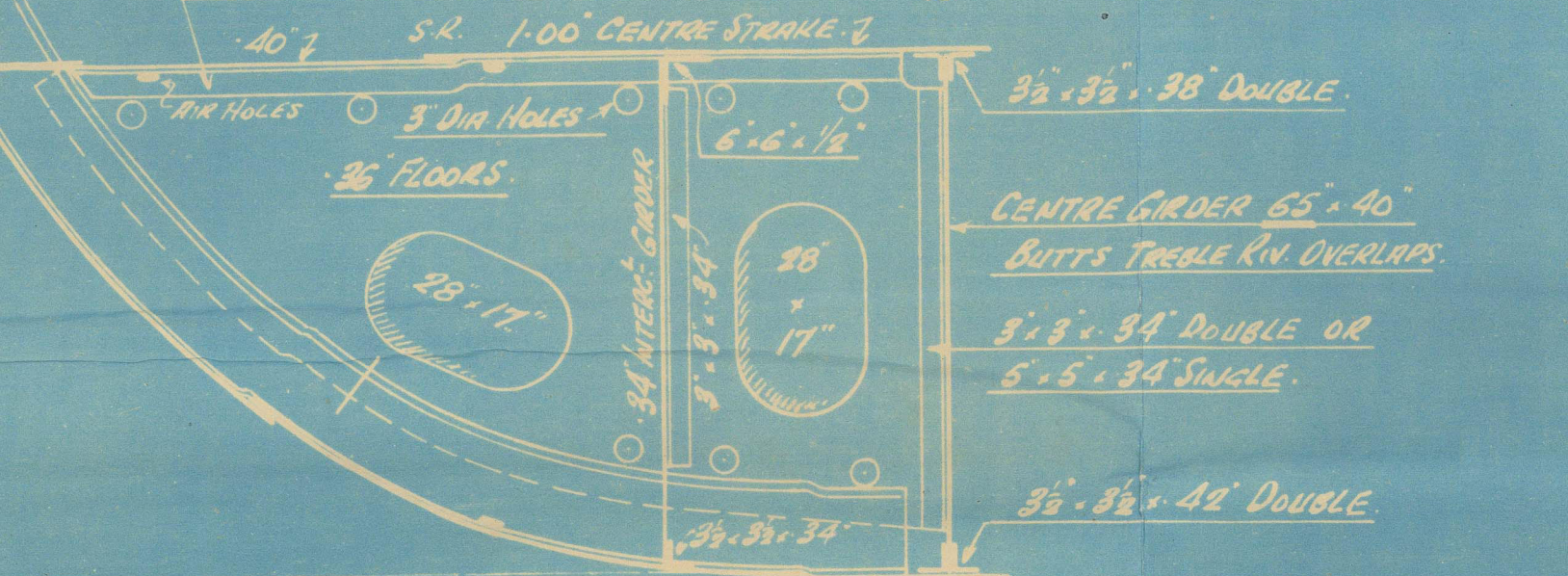
## SECTION IN WAY OF BOILER ROOM (OIL FUEL IN DOUBLE BOTTOM)

W.T. FLOORS IN BOILER ROOM  
FLOORS 45' FRAMES 35'-35'-44" REV FRAMES 5'-8'-44"  
STIFFENERS 7'-3'-38' 8" 30' APART FOR OVERLAP 33'-6"  
HANG TANK TOP

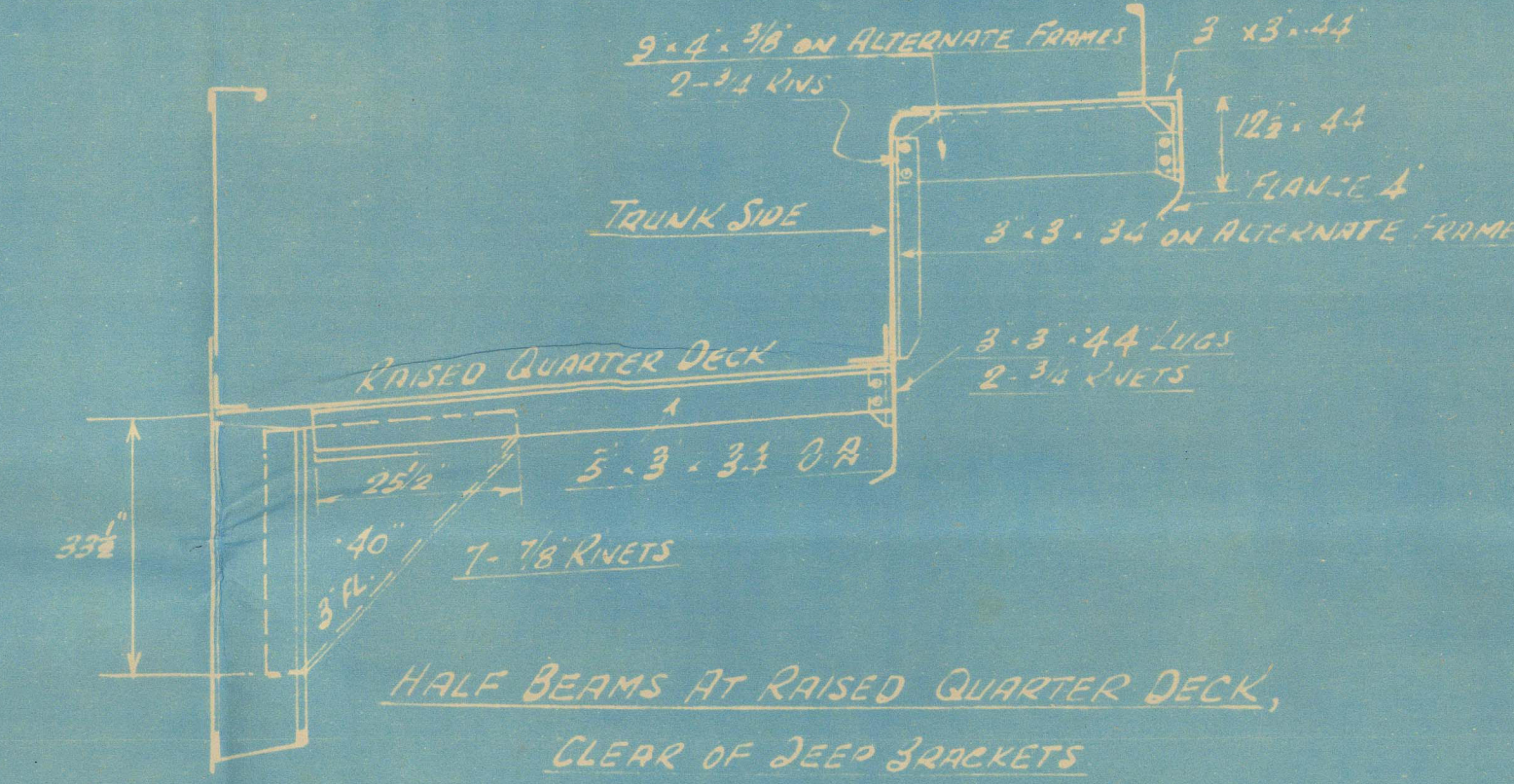
W.T. FLOORS IN ENGINE ROOM  
FLOORS 44' FRAMES 35'-35'-44" REV FRAMES 5'-8'-44"  
STIFFENERS 7'-3'-38' 8" 30' APART FOR OVERLAP 33'-6"  
HANG TANK TOP

## MAIN FRAMES IN ENGINE ROOM 27' APART

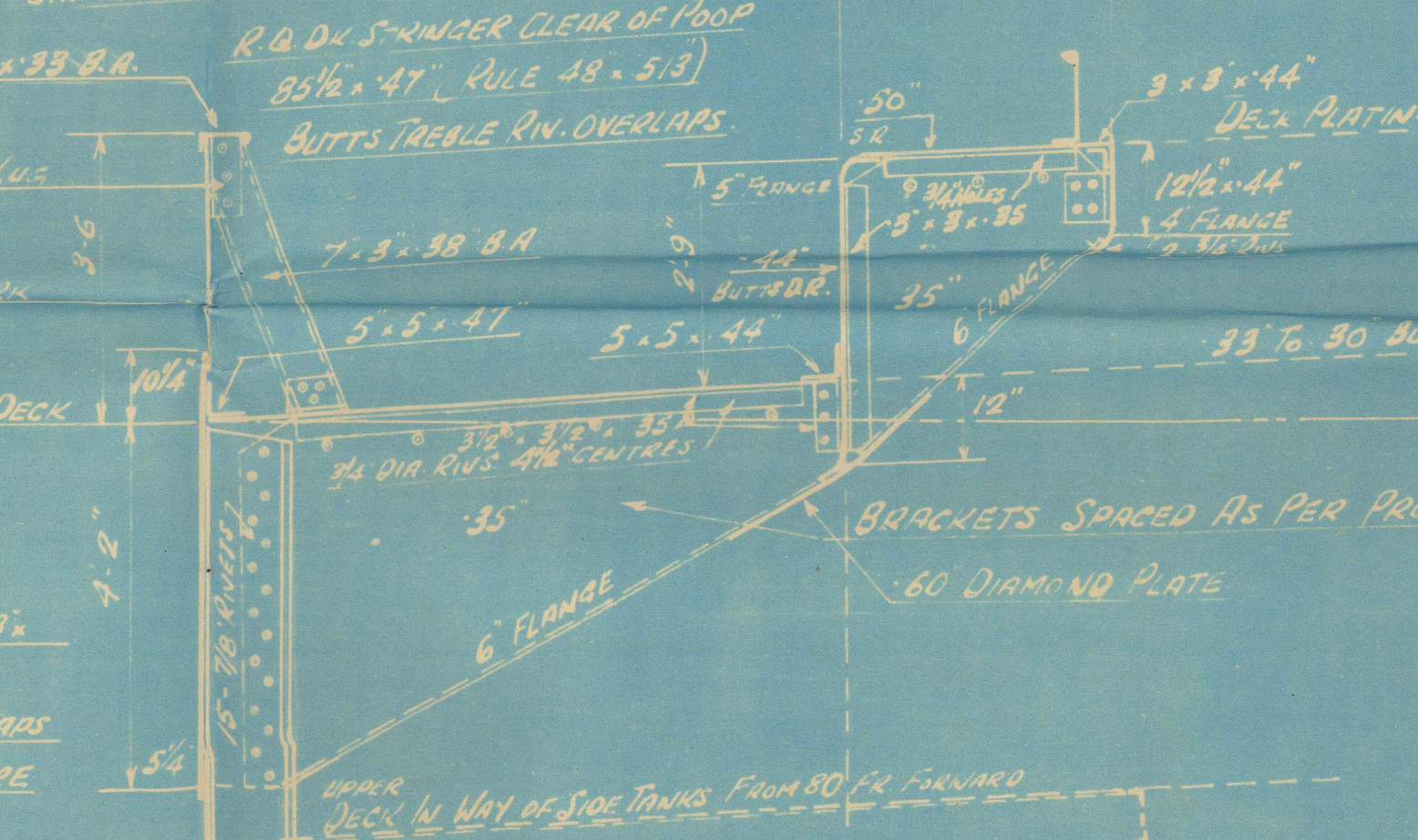
11'-35'-58' 8" A OR 12'-35'-45' 8" A TO R.O. DECK & POOR DECK ALTERNATELY (L = 23'9")  
R.O. DECK BEAM KNEES 31'-29'-40" FLANGED 8" 7-16 RIVETS  
FRAMES IN WAY OF MAIN PLAT 9'-35'-44' 8" (L = 16'-4") KNEES AS PER PROFILE



## SECTION IN WAY OF ENGINE ROOM (FRESH WATER IN DOUBLE BOTTOM)

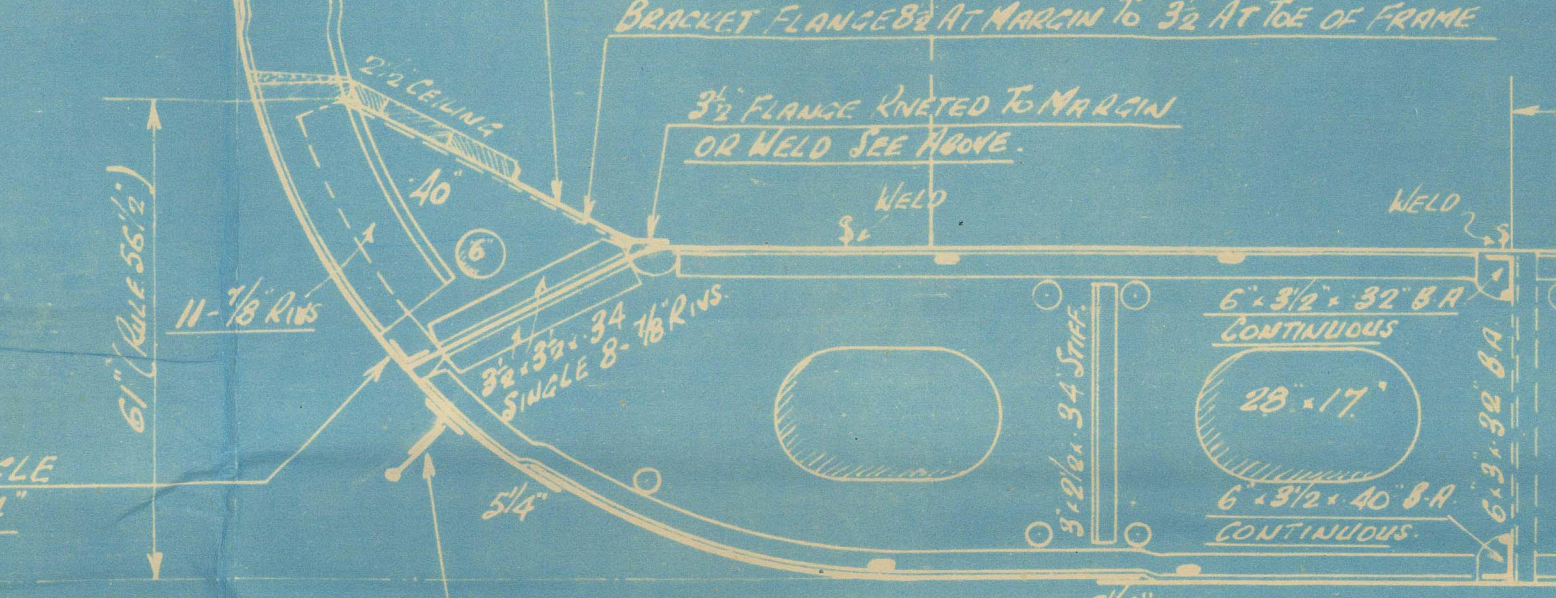
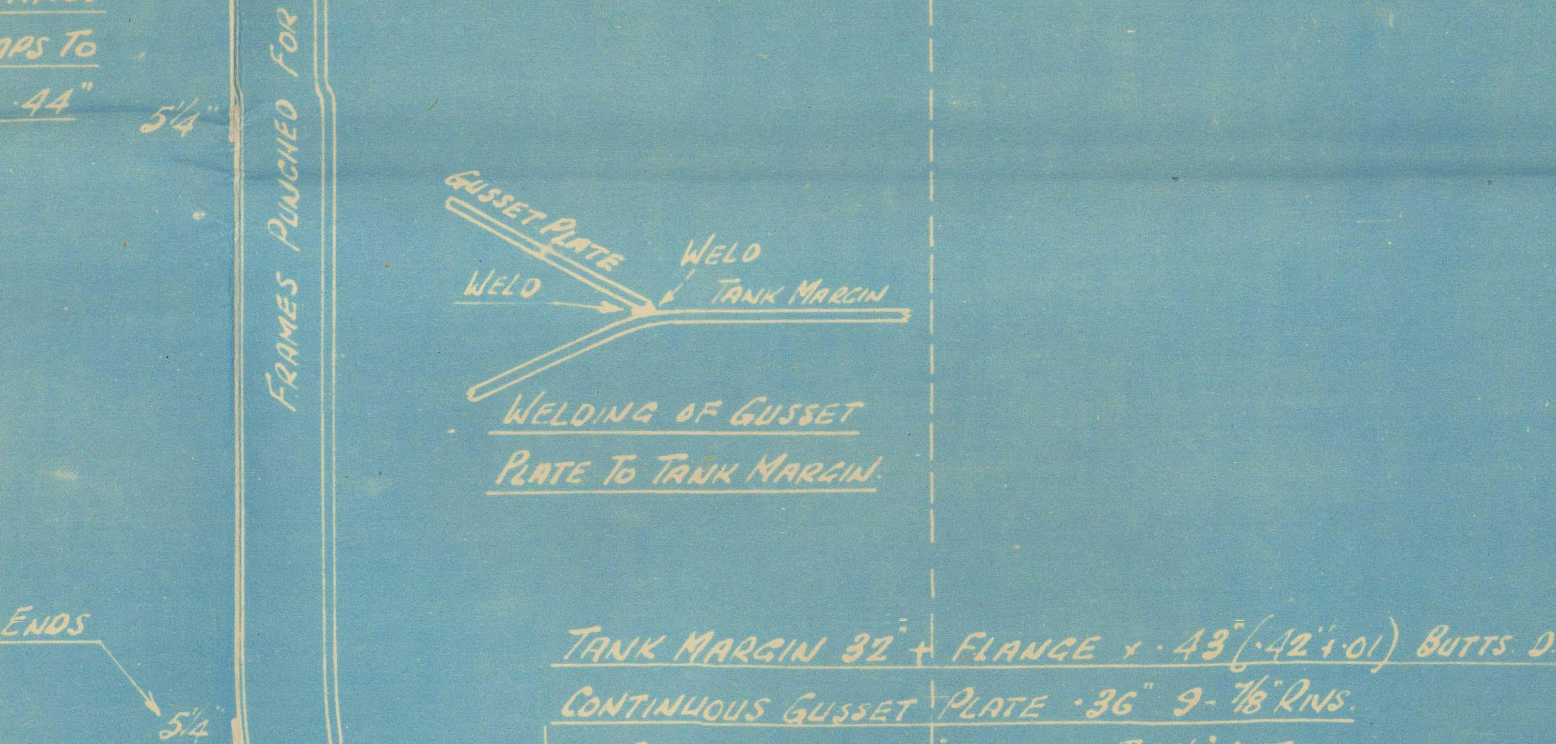


RAISED QUARTER DECK IN WAY OF POOR  
STIFFENER 85'-85' (RULE 44'-34") TO 25'-38' BUTTS 2 R  
DECK PLATING 180' (CROSSING 16' 0" RAIL MOUTH) BUTTS 2 R  
STIFFENER ANGLE 35'-35'-35'

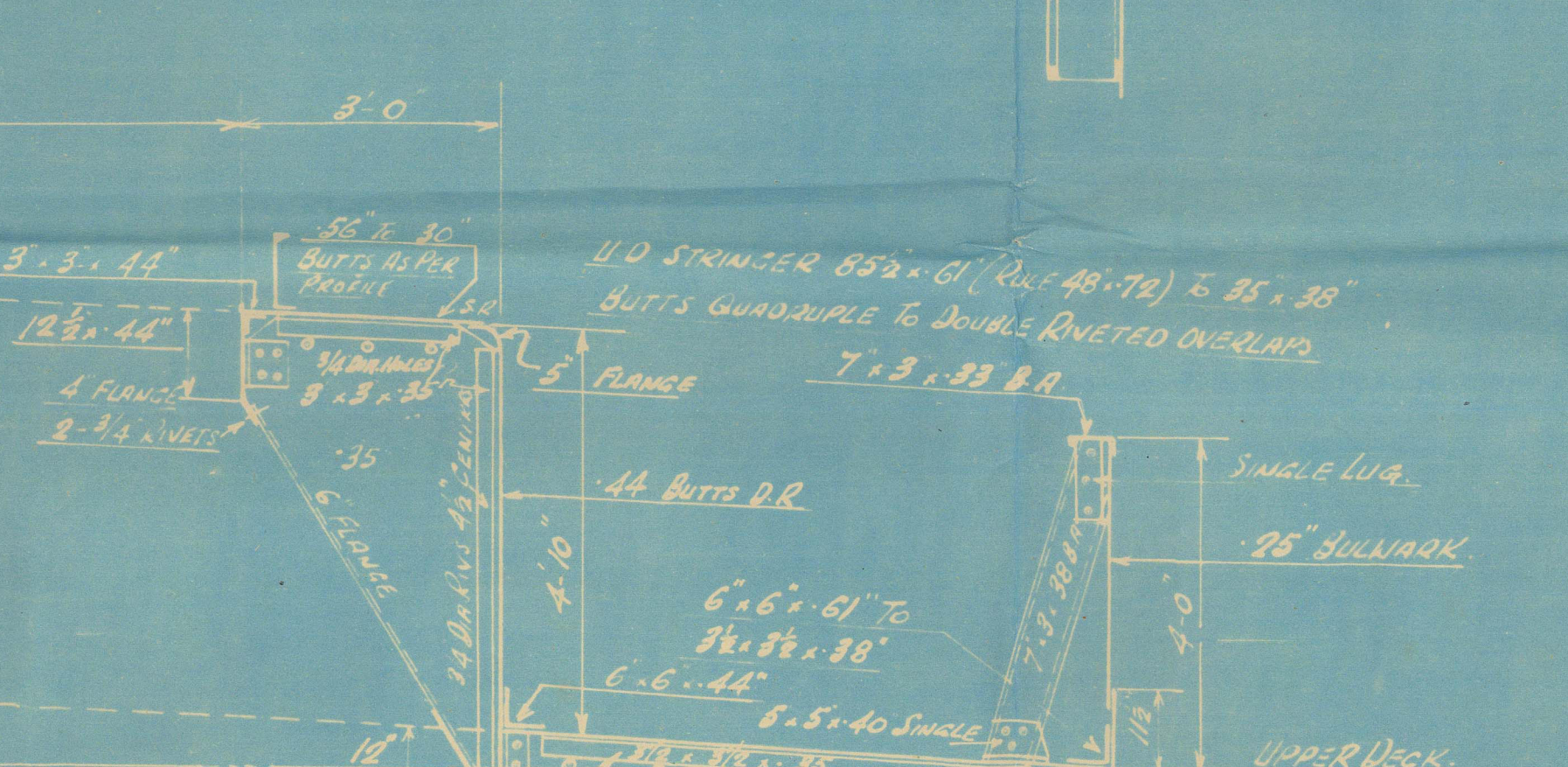
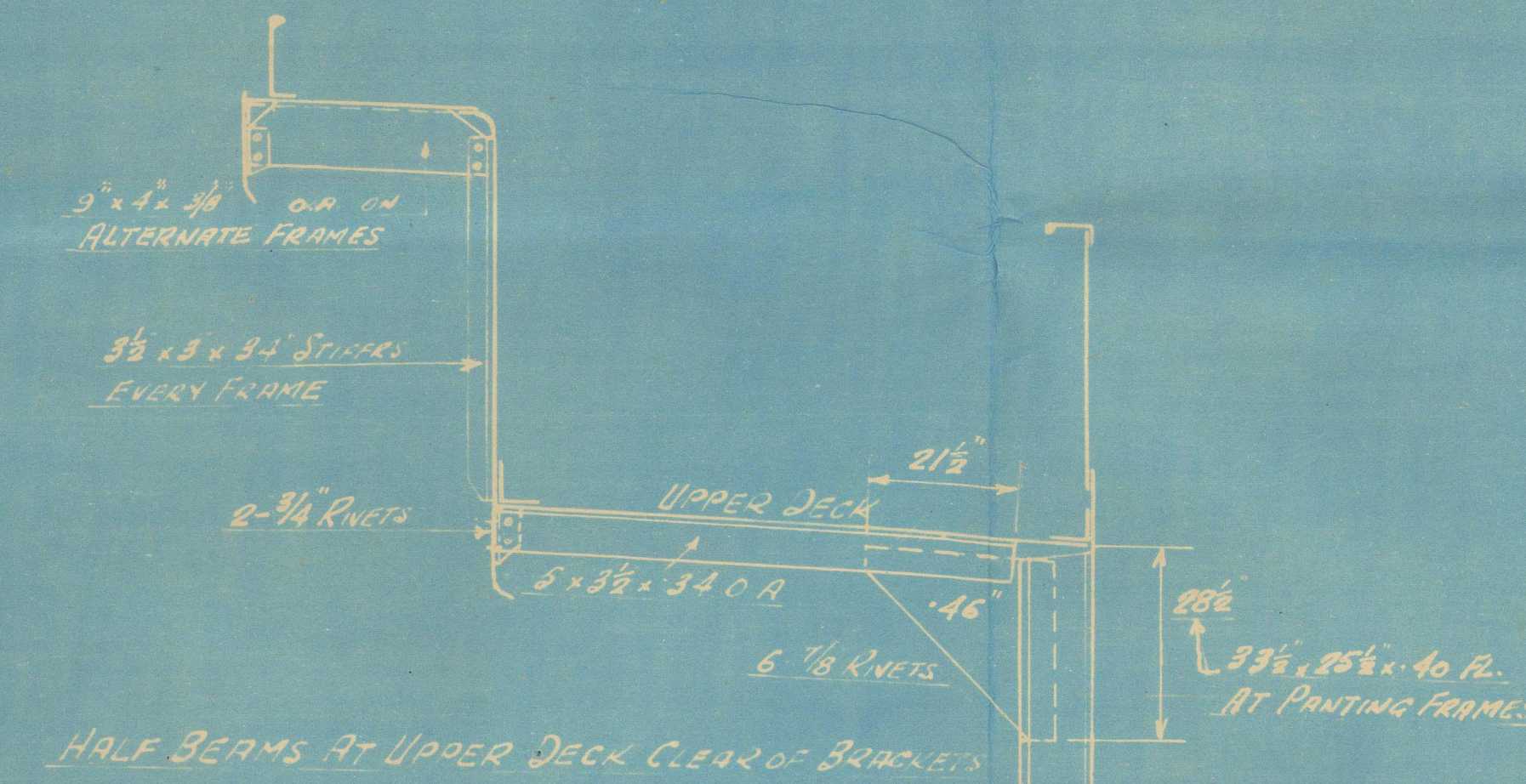


RAISED QUARTER DECK IN WAY OF POOR  
STIFFENER 85'-85' (RULE 44'-34") TO 25'-38' BUTTS 2 R  
DECK PLATING 180' (CROSSING 16' 0" RAIL MOUTH) BUTTS 2 R  
STIFFENER ANGLE 35'-35'-35'

FRAMES IN WAY OF RAISED QUARTER DECK IN HOLDS & CROSS BULKHEAD  
MAIN FRAMES CLEAR OF SIDE TANKS 12'-59'-45' 8" 51' IN CROSS BULKHEAD  
MAIN FRAMES IN SIDE TANKS IN WAY OF UPPER DECK 11'-35'-44' 8" A  
MAIN FRAMES IN SIDE TANKS CLEAR OF UPPER DECK 12'-35'-55' 8" A  
MAIN FRAMES SPACED 27' APART FORWARD OF AFT PEAK BULKHEAD  
AFT PEAK FRAMES 7'-3'-38' 8" A SPACED 24' APART

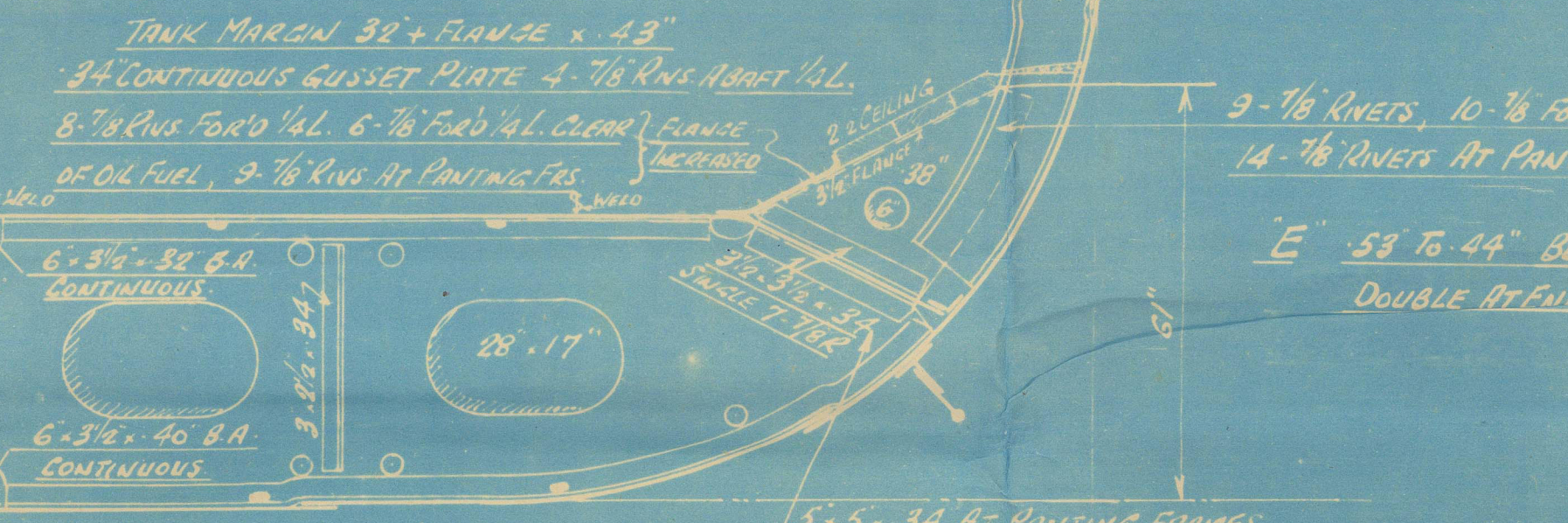
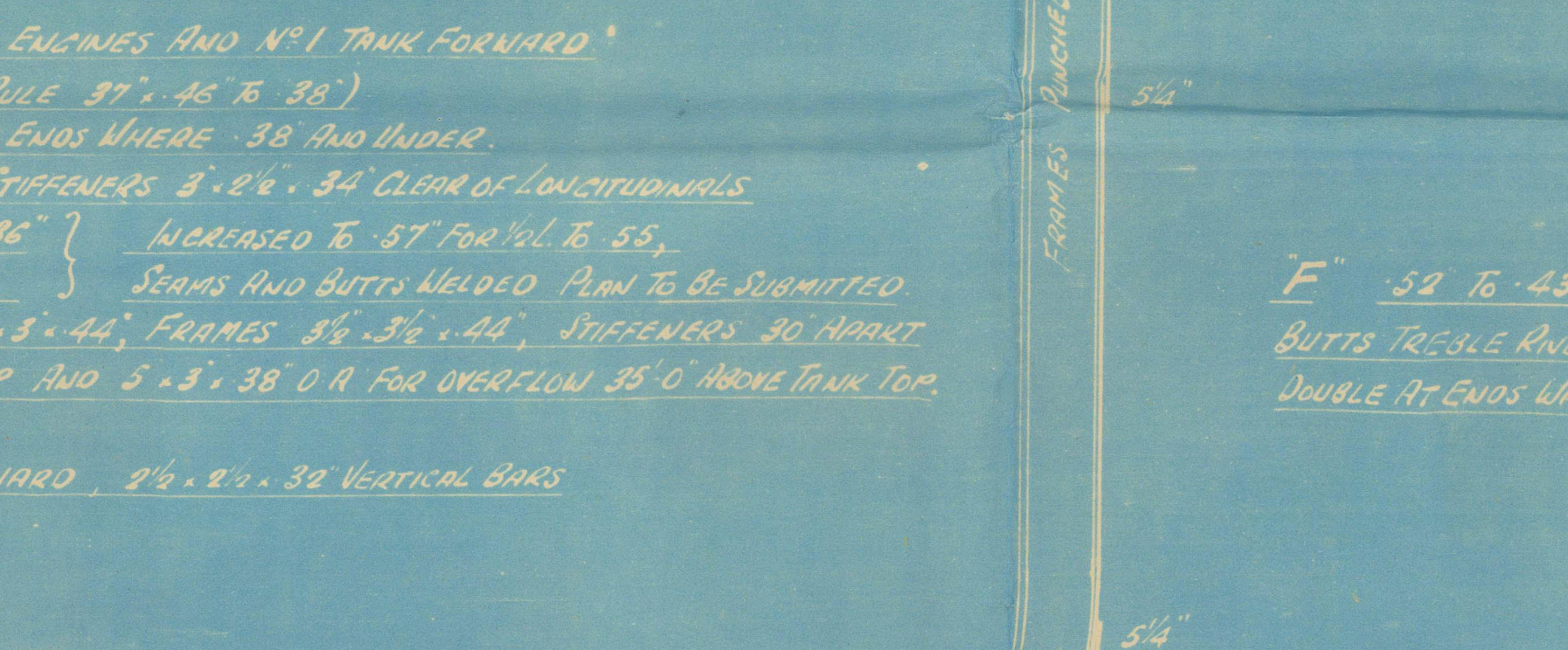


BLUE KEEL 65'-64'-58' 10 1/2" BULB PLATE  
10' C x D STIFFENERS OF BOTTOM SHELL 53' FOR 1/2" TO 44"  
BUTTS TREBLE RIVETED OVERLAPS DOUBLE AT ENDS WHERE 44' (44' 00")



SIDE FRAMES IN WAY OF UPPER DECK  
FRAMES SPACED 27' APART TO COLLISION BULKHEAD, 24' APART IN FORE PEAK  
MAIN FRAMES AT 1/2" FORWARD 10'-35'-50' 8" A OR 11'-35'-44' 8" A  
MAIN FRAMES BETWEEN 1/2" FORWARD AND PEAKING 10'-35'-50' 8" A  
PAINTING FRAMES (L AT COLLISION BULKHEAD 26'8") 12'-35'-50' 8" A

FORE PEAK FRAMES 7'-3'-38' 8" A TO FORECASTLE DECK  
DOUBLE BOTTOM  
OIL FUEL IN DOUBLE BOTTOM EXCEPT UNDER ENGINES AND NO. 1 TANK FORWARD  
CENTRE GIDER 48'-48' 5" 24' 1/2" CLOS (RULE 27'-46' 5" 30")  
BUTTS TREBLE RIVETED OVERLAPS 6" DOUBLE AT ENDS WHERE 30' AND UNDER  
24' SOLID FLOORS ON EVERY FRAME FLOOR STIFFENERS 8'-24' 8" 34' CLEAR OF LONGITUDINALS  
TANK TOP CENTRE STIFFENER RULE 47'-48' 16' 36" INCREASED TO 57' FOR 1/2" TO 55"  
SEAMS AND BUTTS WELDED PLAN TO BE SUBMITTED  
O.T. AND W.T. FLOORS 44' REV FRAMES 35'-35'-44" FRAMES 5'-8'-44" STIFFENERS 30' APART  
5'-3'-38' 8" A OVERLAP 29' 5" UNDER TANK TOP AND 5'-3'-38' 8" A FOR OVERLAP 25' 0" UNDER TANK TOP



DOUBLE BOTTOM  
OIL FUEL IN DOUBLE BOTTOM EXCEPT UNDER ENGINES AND NO. 1 TANK FORWARD  
CENTRE GIDER 48'-48' 5" 24' 1/2" CLOS (RULE 27'-46' 5" 30")  
BUTTS TREBLE RIVETED OVERLAPS 6" DOUBLE AT ENDS WHERE 30' AND UNDER  
24' SOLID FLOORS ON EVERY FRAME FLOOR STIFFENERS 8'-24' 8" 34' CLEAR OF LONGITUDINALS  
TANK TOP CENTRE STIFFENER RULE 47'-48' 16' 36" INCREASED TO 57' FOR 1/2" TO 55"  
SEAMS AND BUTTS WELDED PLAN TO BE SUBMITTED  
O.T. AND W.T. FLOORS 44' REV FRAMES 35'-35'-44" FRAMES 5'-8'-44" STIFFENERS 30' APART  
5'-3'-38' 8" A OVERLAP 29' 5" UNDER TANK TOP AND 5'-3'-38' 8" A FOR OVERLAP 25' 0" UNDER TANK TOP

FORECASTLE  
SIDE PLATING 38' STAINS 5' 8" BUTTS 5' 8"  
STIFFENER PLATE 30'-32' BUTTS 5' 8"  
STIFFENER ANGLE 35'-35'-35'  
DECK PLATING 39' BUTTS 5' 8"

POOR  
SIDE PLATING 31' FOR 1/2" TO 34' STAINS 5' 8" BUTTS 5' 8" R  
STIFFENER PLATE 29' 40' (RULE 48'-49') 30'-38' BUTTS TREBLE R  
STIFFENER ANGLE 35'-35'-40' 16' 3' 31' 32"  
DECK PLATING 38' TO 30' BUTTS 34' TO 5' 8"

RIVETING IN FRAMES AND FLOORS  
FORWARD OF 1/2" FORWARD THE RIVETS CONNECTING THE 5'-5" BOTTOM FRAMES  
TO FLOORS TO BE IN TWO COMPLETE ROWS AND SPACED 6" 8" AS APART IN EACH ROW  
1/2" THROUGH THE 5'-5" FRAMES 6" SHELL TWO COMPLETE ROWS SPACED 5" AS EACH ROW  
RIVETS IN THE BOTTOM FRAMES TO SHELL AT 1/2" FORWARD SPACED 7" AS APART  
RIVETS IN THE REVERSED FRAMES TO FLOORS AND TANK TOP SPACED 7" AS APART  
RIVETS IN THE PAINTING FRAMES TO SHELL SPACED 5 1/2" AS APART  
RIVETS IN THE SIDE FRAMES TO SHELL AT 1/2" FORWARD SPACED 7" AS APART  
RIVETS IN THE SIDE FRAMES TO SHELL IN SIDE TANKS SPACED 5 1/2" AS APART  
RIVETS IN THE SIDE FRAMES TO SHELL IN FORE AND AFT PEAK TANKS SPACED 5 1/2" AS APART  
RIVETS IN THE SIDE FRAMES TO FLOORS AND CEILING IN AFT PEAK SPACED 5" AS APART  
RIVETS IN THE SIDE FRAMES TO FLOORS IN FORE PEAK TANK SPACED 7" AS APART

11' 88 1/2" 68' FOR 1/2" (RULE 48'-48 1/2")  
TO 48' AT ENDS  
BUTTS QUADRIPE RIVETED OVERLAPS  
TO DOUBLE AT ENDS WHERE 44' 0" UNDER  
INCREASED AT BREAK

6' 82' 55' FOR 1/2" TO 48"  
(RULE 48'-603)  
BUTTS TREBLE RIVETED OVERLAPS TO  
DOUBLE AT ENDS WHERE 44' AND UNDER

STEM 8 1/2" 9 1/2"  
RUDDER POST 3 1/2" 6" (TRAVER STEEL)  
PROPELLER POST 3 1/2" 6"  
PLAN TO BE SUBMITTED

F' 53' 16' 48"  
BUTTS TREBLE RIVETED OVERLAPS  
DOUBLE AT ENDS WHERE 44' AND UNDER (44' 00")

E' 53' 16' 48"  
BUTTS TREBLE RIVETED OVERLAPS  
DOUBLE AT ENDS WHERE 44' AND UNDER (44' 00")

No 1174-88

No 1174-88



Wm. Gung & Co. No 1174

Miachip Sutoru

Empire Jamaica

W. H. Rpt. No 18623

Empire Barbados

No 18628



© 2021

Lloyd's Register  
Foundation

013497 013407 0002