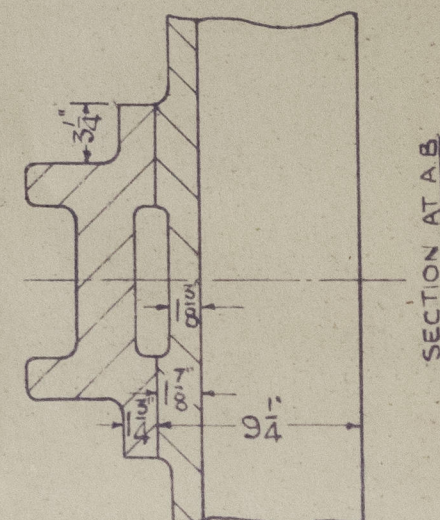


5'-0" CAST STEEL QUADRANT & TILLER No 4222-3

2'-9" RUDDER BRAKE.

SCALE $1\frac{1}{2}" = 1\text{ FOOT}$.

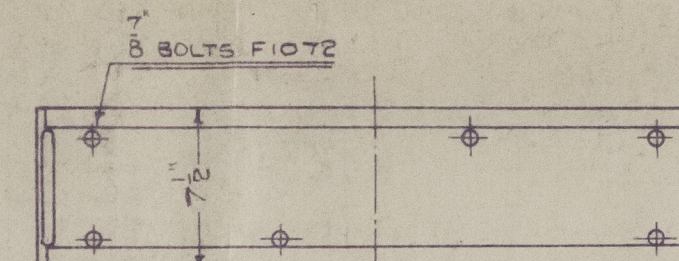
JOHN HASTIE & CO LTD GREENOCK			
DRAWN BY	JB	DATE ISSUED	
TRACED BY	N.B.		
DRG No 11855		8 JAN 1944	



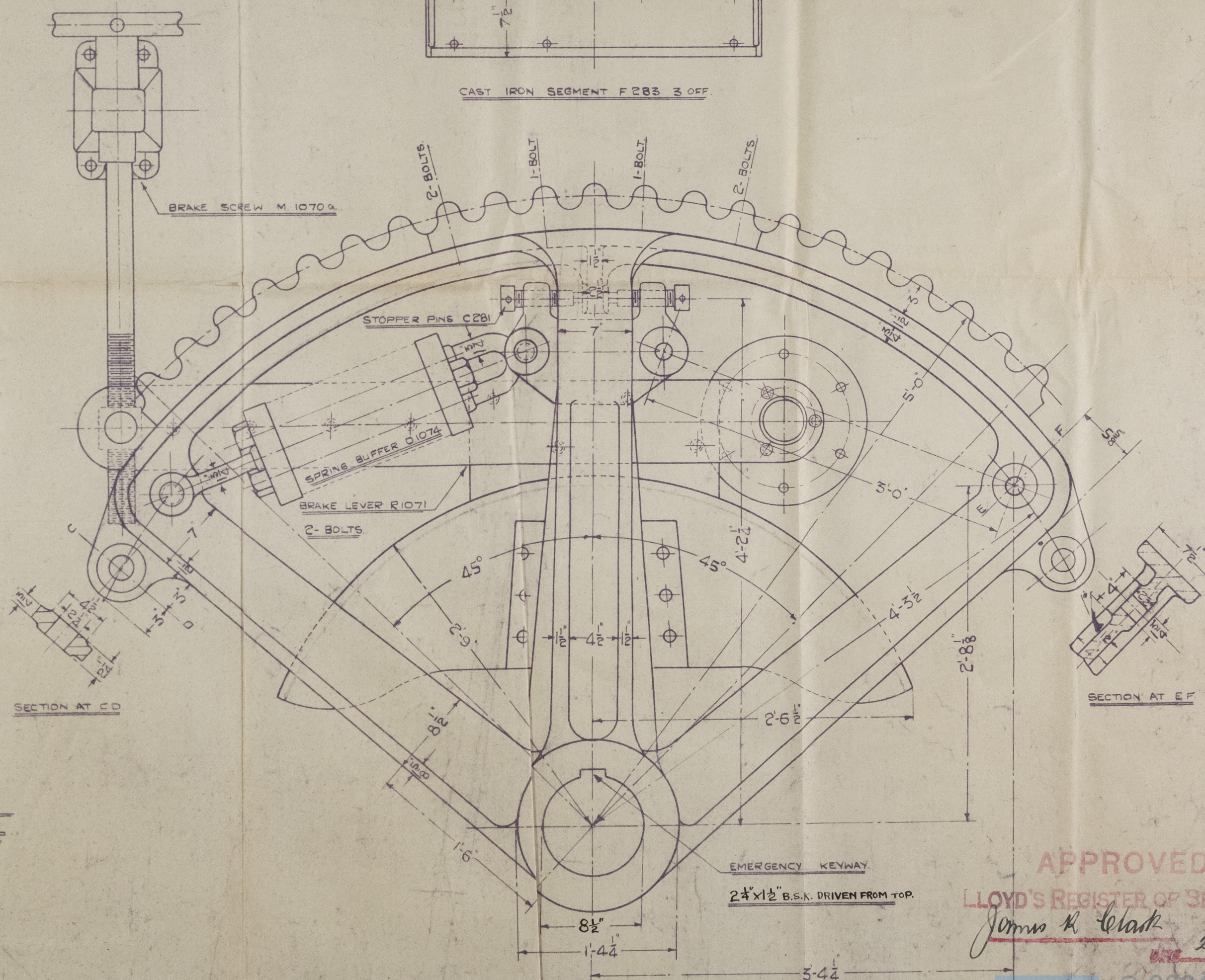
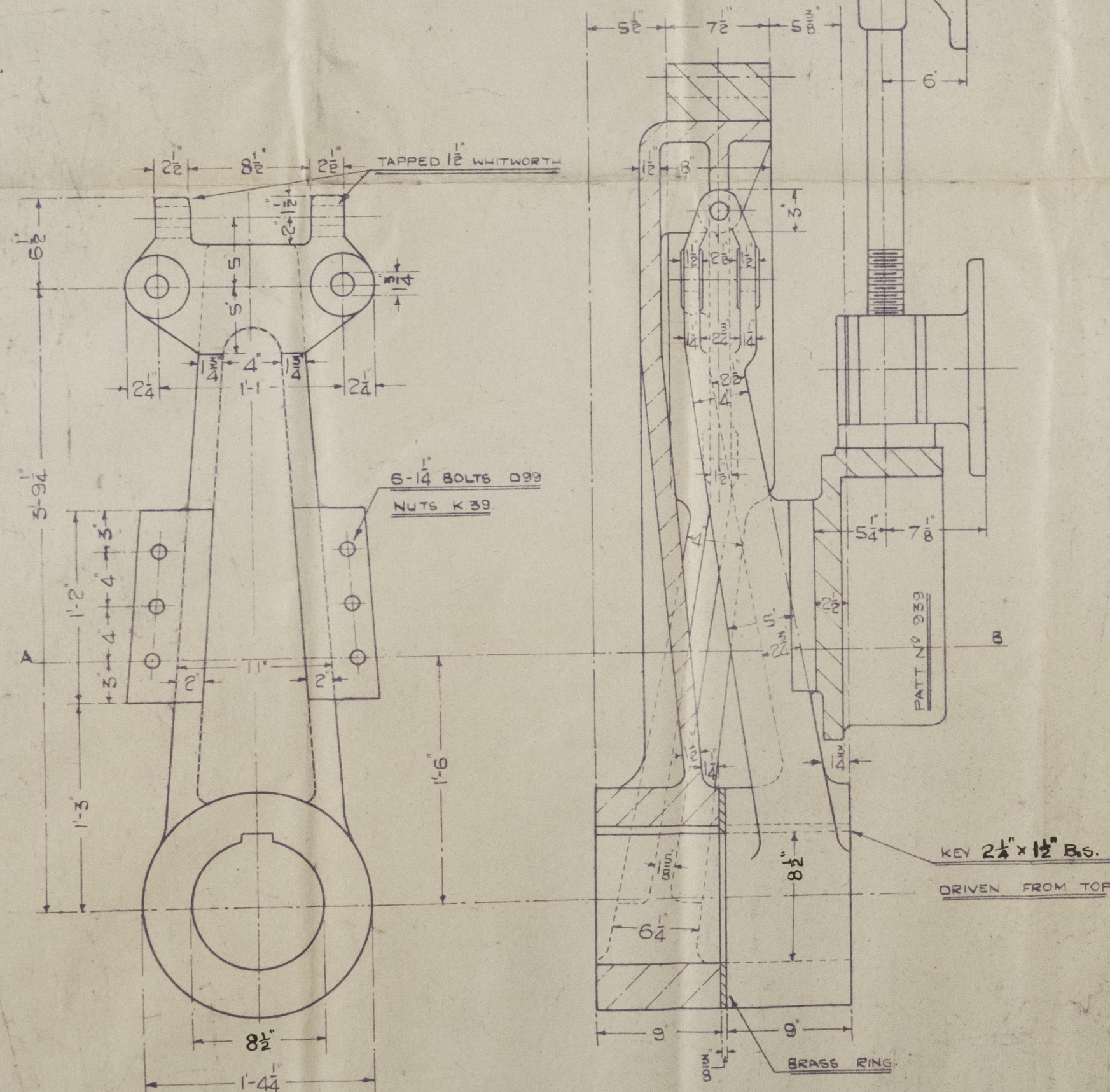
SECTION AT A-B

NB ALL SCANTLINGS ARE THE SAME AS APPROVED BY LLOYD'S AND THE BRITISH CORPORATION FOR N° 3 PATTERN STANDARD QUADRANT AND TILLER

PART	N° OFF	SYMBOL OR PATT. N°	MATERIAL	SECTION	REMARKS
QUADRANT	1	3	CAST STEEL	25	5'-0" RAD
STOPPER PIN	2	C 281	MILD STEEL		
SEGMENTS	3	F 283	CAST IRON		
BOLTS	18	F 1072	MILD STEEL		
QUADRANT RING	1	DA 238	BRASS		d = 4 1/2"
SPRING BUFFER	2	D 1074			
TILLER	1	3	CAST STEEL		
BRAKE	1	939	CAST IRON	30	2'-9" RAD
BOLTS	6	D 99	MILD STEEL		
NUTS	6	K 39			
BRAKE LEVER	1	R 1071			
" SCREW	1	M 1070a			
QUAD. LUBRICATOR	1	1678			IF REQUIRED



CAST IRON SEGMENT F 283 3 OFF



SHIP No 1173-1174 MESSRS. WM. GRAY & CO. LTD.

SURVEY LLOYD'S

APPROVED
LLOYD'S REGISTER OF SHIPPING

James K. Clark
28/1/44

© 2021
DRG No. 11855

GRAY 5-0 QYT

4222-23

Quadrant & Line.



© 2021

Lloyd's Register
Foundation

0126467-013507-0001