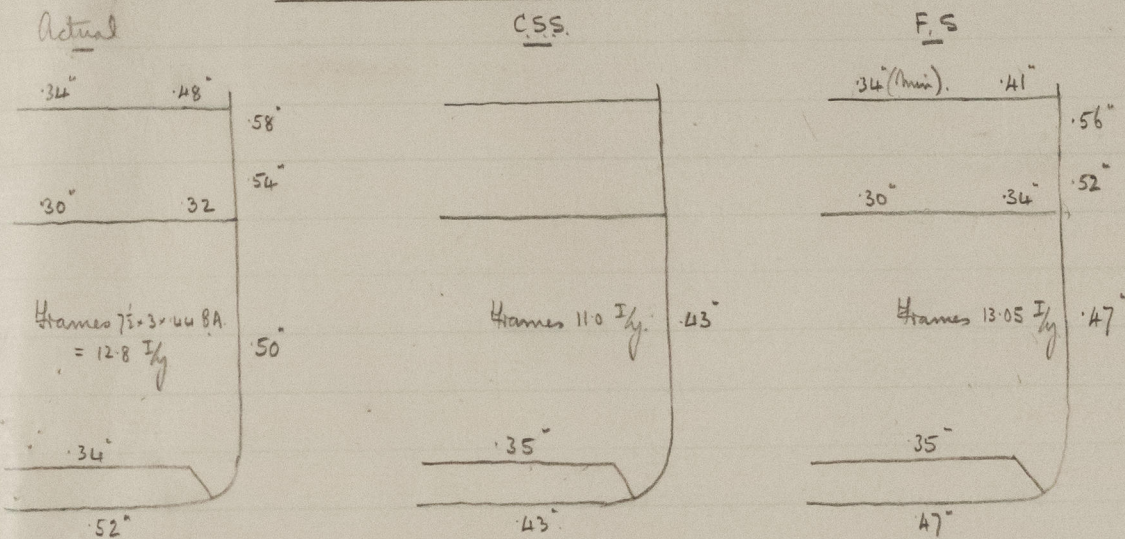


S.S. "Masilia"

275' x 41' x 25.5'



	C.S.S.	F.S.
Hames	+16%	-2%
Bank Top	-3%	-3%

All the remaining scantlings are in excess of the Rules for the Full scantling ship.

18.05
12.8
1.25
1.8

↓ F.S.

C.S.S.

14
17.6.32

Full loading
S/B

Full loading
as fresh deck penalty
exceeds penalty for
deficiency in scantling

Full



© 2021

Lloyd's Register
Foundation

013434-013446-0306