



Lloyd's Register of Shipping.

SURVEYS FOR FREEBOARD 13 DEC 1949

(CONDITIONS OF ASSIGNMENT.)

"ALAN" 2X

Ship's Name M.S. "NELLY MAERSK"

Port of Survey NEWCASTLE-ON-TYNE

Official Number -

Surveyor's Signature *H. J. Mearns*

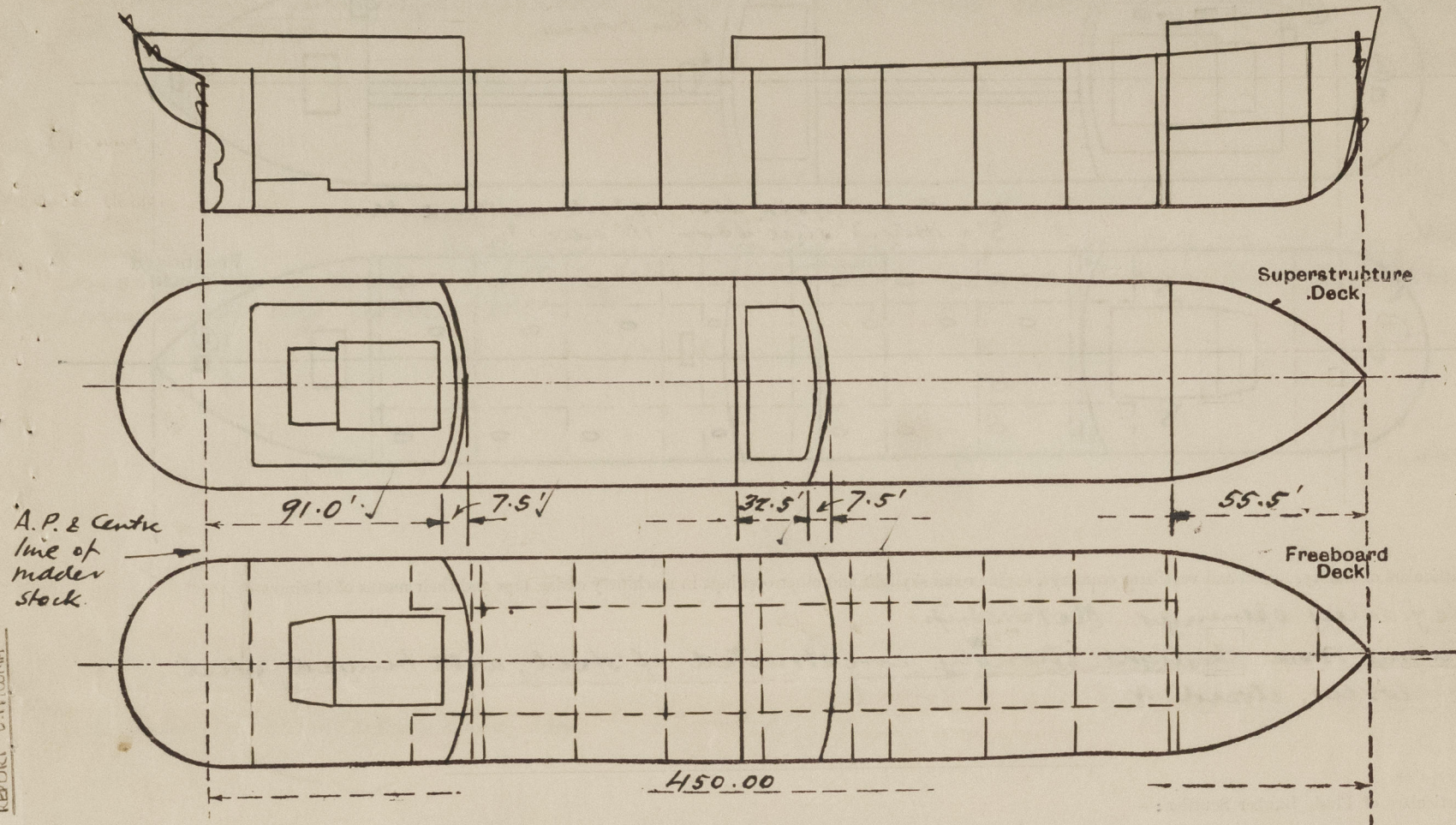
Nationality and Port of Registry

Danish, Copenhagen

Date of Survey

During Construction

Disposition and dimensions of superstructures, trunks, deckhouses and machinery casings to be inserted in the diagrams and tabular statement :-



Particulars of Superstructures, Trunks, Casings, Deckhouses.

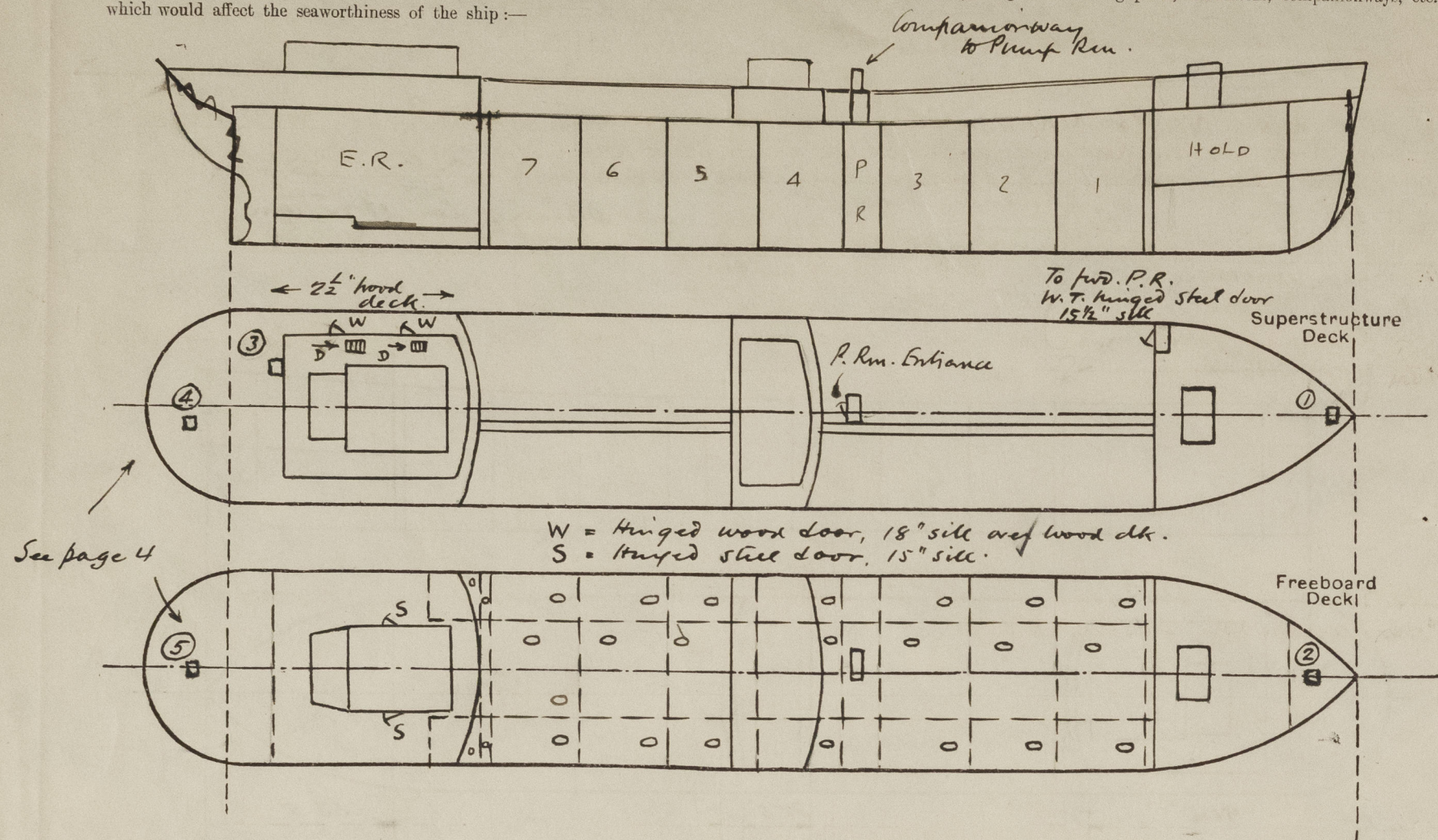
	Coaming	Plating	Stiffeners	Spacing	End Attachments of Stiffeners	Size of Openings	Height of Sills	Height of Casings
Poop Bulkhead ...	-	.44	9x3 1/2 x 54 L	30"	Top. Btm. Welded	None	-	7.67'
Raised Quarter Deck Bulkhead ...	-	.30	4x3 x 32 L	30"	Top & Btm. Welded	4'6" x 3'0"	22"	7.5'
Bridge, After Bulkhead ...	-	.44	9x3 x 44 L	30"	"	4'6" x 2'3"	18"	7.5'
Bridge, Forward Bulkhead ...	-	.30	4x3 x 32 L	30"	"	4'0" x 3'0"	22"	7.5'
Forecastle Bulkhead ...	-	.30	4x3 x 32 L	30"	"	4'0" x 2'0"	15" 24"	7.5'
Trunk, Aft ...						To Pump Rm.		
Trunk, Forward ...								
Exposed Machinery Casings on Freeboard or Raised Quarter Decks ...								
Exposed Machinery Casings on Superstructure Decks ...								
Machinery Casings within Superstructures not fitted with Class I Closing Appliances in Poop30	.26	4 1/2 x 3 x 30 L	30"	Top. Bkt? Btm. To beams	5'3" x 2'0"	15"	7.67'
Pump Rm. Entrance Deckhouses on Flush Deck Ships ...	-	.30	4x3 x 30 L	30"	Top. Bkt? Btm. Welded	4'0" x 2'0"	24"	7.5'

Particulars of Closing Appliances (state if capable of being manipulated from both sides).

Poop Bulkhead ...	No openings
Raised Quarter Deck Bulkhead ...	-
Bridge, After Bulkhead ...	Wood shifting boards, 3" thick, fitted in welded channels
Bridge, Forward Bulkhead ...	Hinged steel door, closed W.T. & operable from either side
Forecastle Bulkhead ...	Wood shifting boards, 3" thick, fitted in welded channels
Exposed Machinery Casings on Freeboard or Raised Quarter Decks ...	Hinged steel door, closed W.T. & operable from either side to fwd. P.R.
Exposed Machinery Casings on Superstructure Decks ...	-
Machinery Casings within Superstructures not fitted with Class I Closing Appliances in Poop ...	Hinged steel doors, operable from either side
Pump Rm. Entrance Deckhouses on Flush Deck Ships ...	Hinged steel doors, closed W.T. & operable from either side

PARTICULARS OF PROTECTION TO OPENINGS, ETC.

The following diagrams should be used to indicate the positions of cargo and coaling hatchways, gangway, cargo and coaling ports, ventilators, companionways, etc., which would affect the seaworthiness of the ship:—



Particulars of fiddle, funnel and ventilator coamings, engine room skylight and other openings in machinery casing tops and their means of closing:—

No fiddle openings. Motorship.

Engine room skylight strongly constructed of steel, with hinged steel covers, closed W.T.

Particulars of Flush Bunker Scuttles:—

None

Particulars of Companionways:— Entrance to accommodation through deckhouses, strongly constructed of steel. Entrance to Main Pump room through strongly constructed steel house with hinged steel door closed W.T. Entrance to forward Pump room through file port by hinged steel door closed W.T., 15 1/2" sill. All doors operable from either side.

Additional entrance to midship P.Rm. through strongly constructed steel companionway on top of main entrance house. Hinged steel W.T. door operable from either side into sill 15" over gangway level.

Vents. on file deck 36" high. Vents. on upper deck 20'0" high & efficiently supported. Cowl vents on Bridge & Poop 24" high. Gooseneck vents on Bridge & Poop to accommodation 18" high. All vents fitted with means of closing. Gooseneck vents strongly constructed & efficiently attached to deck.

Particulars of Air Pipes in exposed positions on freeboard, raised quarter, or superstructure decks:—

On upper deck 36" high, elsewhere 18". All steel, of gooseneck type substantially constructed & fitted with hinged steel covers. Gangways fitted over air pipes to Fuel Tanks.

Particulars of Gangway Cargo and Coaling Ports:—

None

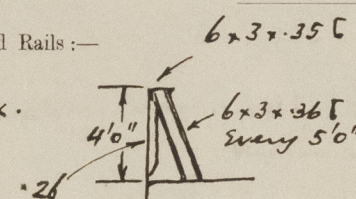
Nelly Maersk.

Particulars of Scuppers and Sanitary Discharge Pipes:— Scuppers and sanitary discharges from spaces above Poop Deck discharged overboard in Engine Rm. 2'0" - 2'6" above L.W.L. Ditto from spaces in Poop discharged overboard in E.R. 1'6" - 2'6" above L.W.L. Ditto from spaces on and above Bridge deck discharged overboard through Bridge side 1'6" above upper deck. All above discharges fitted with storm valves. Scuppers from refrigerated store room in Poop led to E.R. bilge & fitted with water trap.

Particulars of Side Scuttles:— In Poop, Bridge & Forecastle sides, all substantially constructed of brass & fitted with substantial hinged brass deadlights, permanently attached.

Vertical distance of Sill of lowest Side Scuttle above top of keel 39.67 ft.

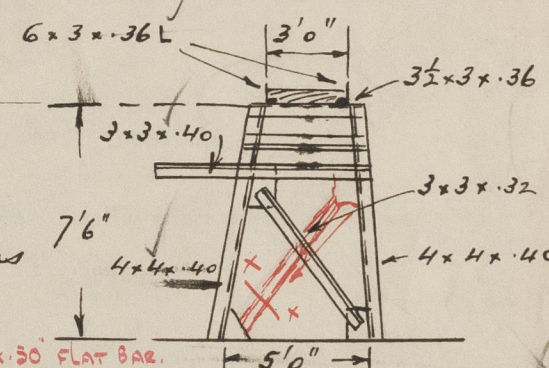
Particulars of Guard Rails:— Bulwark on Upper Deck.



Rails on Forecastle, Poop & Upper decks clear of bulwarks. Height 3'6". Three rods. Stanchions spaced about 5'0" apart.

Particulars of Gangways, Lifelines, etc.:—

For & aft Gangway between Poop & Bridge and between Bridge & Forecastle. Supports as sketch 10' apart. Rails on gangway 3'6" high. Two rods. Stanchions spaced about 5'0" apart.



Particulars of Freeing Arrangements.						
	Length of Bulwark	Height of Bulwark	Size of Freeing Ports	Number each side	Area each side sq. ft.	Rule area each side
After Well	20'6" at aft end 32'6" fwd "	4'0"	1 @ 5'6" x 9" 1 @ 10'0" x 9"	one "	4.125 7.5	-
Forward Well	16'0" aft " 56'0" fwd "	4'0"	None 1 @ 15'0" x 9"	- one	- 11.25	-
State position of each freeing port ... (F. and A. position and height above deck edge) ... State whether the freeing ports are fitted with shutters, bars, or rails, and give particulars of such:—						
Additional area where sheer is less than standard. —						
Bulwarks on Bridge deck, 39" high, steel efficiently stayed. Freeing arrangements 2 ladderways & gangway opening aft. Gangway opening fwd.						
Bulwarks on Poop deck, 36" high, steel efficiently stayed. Freeing ports 1 @ 8'0" x 8" & 1 @ 10'0" x 8" P.S. 8" above deck edge. Gangway opening & 2 ladderways at fwd. end.						

PARTICULARS OF PROTECTION TO OPENINGS, ETC.

HATCHWAYS ON FREEBOARD AND SUPERSTRUCTURE DECKS.									
Description of Hatchway		Cargo Tank	Hatches to C/dms & Bkns. on Up Dk.	Trunked Cays on Deck					
Dimensions of Hatchway		5'6" x 2'6"	1'6" x 1'0"	1'20" x 1'0"					
COAMINGS	Height above Deck	32"	8"	2'6 3/8"					
	Thickness	.43	.64	.44					
	Stiffeners	1 c Side		4 x 3 x 32 L					
	Brackets, Stays			24" / 30" apt.					
HATCH BEAMS	Number	/	/	on trunk.					
	Spacing	/	/	7 x 3 1/2 x 40 L					
	Scantling and Sketch	/	/	horiz. on coaming.					
	Bearing Surface	/	/						
FORE AND AFTERS	Number	/	/	/					
	Spacing	/	/	/					
	Unsupported Lengths	/	/	/					
	Scantling* and Sketch	/	/	/					
HATCH COVERS	Material	Steel	Steel	Steel					
	Thickness	.63	.50	.40					
	How fitted	Hinged	Hinged	6 x 40 plates					
	Bearing Surface	0.7	0.7	1.9" apt. for 1A.					
Spacing of Toggles		15"	3/4" Bolts spaced 2 1/2" apt.	15"					
Number of Tarpaulins				Hinged 0.7.					
<p>*Are wood fore and afters steel shod at all bearing surfaces? -</p> <p>Are battens and wedges efficient and in good condition? Yes</p> <p>Are tarpaulins in good condition and in accordance with rule requirements? Yes</p> <p>Are lashings provided in accordance with rule requirements? -</p>									

Particulars of any special features:—

- ① Hatch on side to tween deck 4'6" x 2'6". 24" x 30 Coaming. Cover 30" hinged & closed W.T. by 10 toggles. ✓
- ② Hatch in side to Peak. 2'6" x 2'6". 18" x 30 Coaming. Cover 30" hinged & closed W.T. by 8 toggles. ✓
- ③ Hatch on Poop to Store. Same as No ② ✓
- ④ Hatch on Poop to Steering Gear. Same as No ② ✓
- ⑤ Hatch on Upper deck to Counter. 2'6" x 2'6". 12" x 42 coaming. 2 1/2" wood covers fitted with tarpaulin & battening arrangements. ✓

Endorsement at first survey and at surveys for renewal of Certificate:—

The fittings and appliances are in accordance with the particulars shown on this form (or as now modified) and are in good condition.



© 2021

Lloyd's Register Foundation