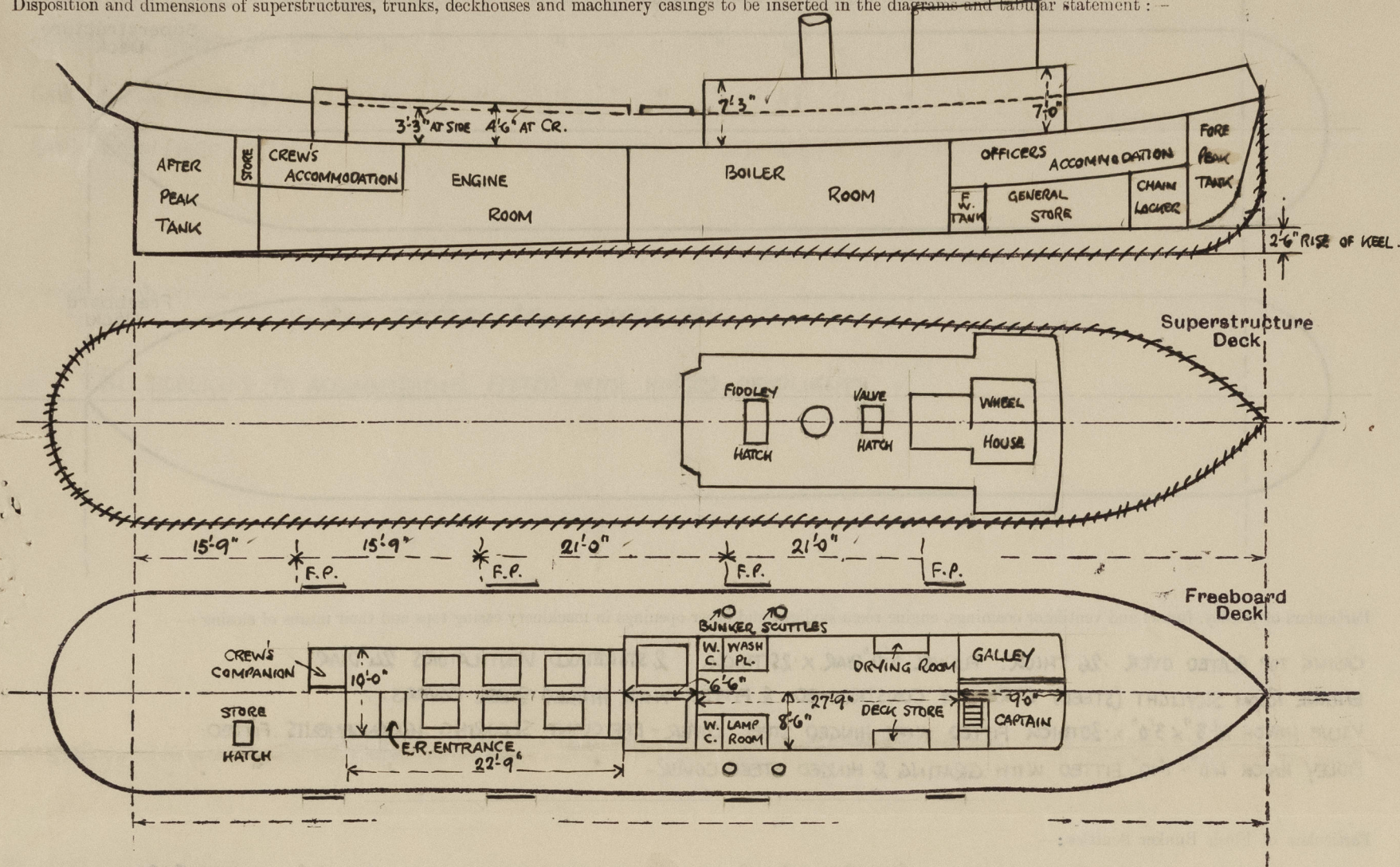


Lloyd's Register of Shipping.
SURVEYS FOR FREEBOARD.
(CONDITIONS OF ASSIGNMENT.)

Ship's Name "EMPIRE ELINOR" Port of Survey HULL.
Official Number Surveyor's Signature J.R. Macleod
Nationality and Port of Registry BRITISH - HULL. Date of Survey while building

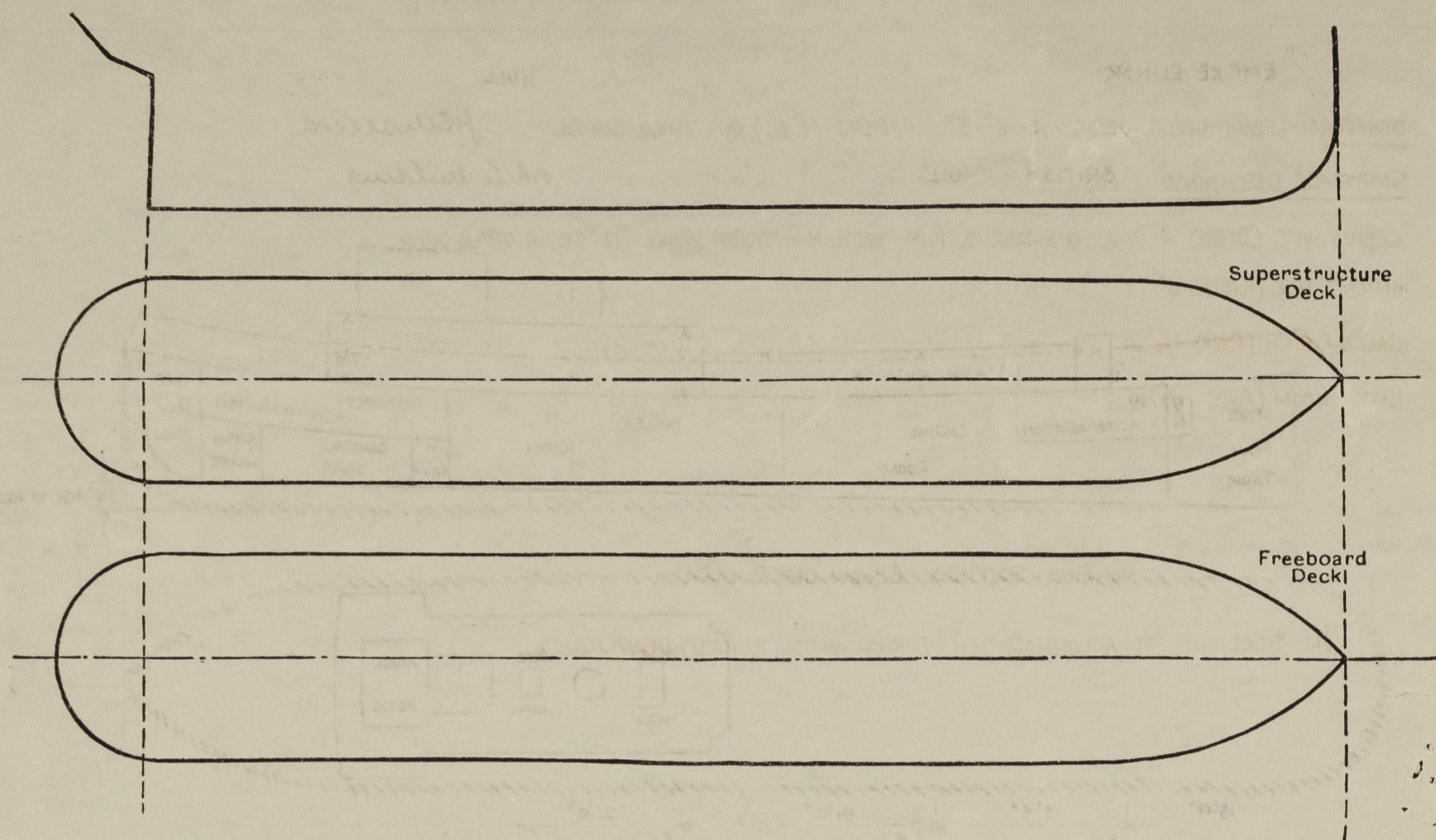
Disposition and dimensions of superstructures, trunks, deckhouses and machinery casings to be inserted in the diagrams and tabular statement :-



Particulars of Superstructures, Trunks, Casings, Deckhouses.								
	Coaming	Plating	Stiffeners	Spacing	End Attachments of Stiffeners	Size of Openings	Height of Sills	Height of Casings
Poop Bulkhead								
Raised Quarter Deck Bulkhead								
Bridge, After Bulkhead								
Bridge, Forward Bulkhead								
Forecastle Bulkhead								
Trunk, Aft								
Trunk, Forward								
Exposed Machinery Casings on Freeboard or Raised Quarter Deck	18" x 31"	26	6 x 2 x .375 IN WAY OF FUNNEL 3 x 2 1/2 x .28	23" TO 28"	KNEES AT TOP	4'-11" x 1'-11"	18"	7'-3"
Exposed Machinery Casings on Superstructure Decks	✓							
Machinery Casings within Superstructures not fitted with Class I Closing Appliances	✓							
Deckhouses on Flush Deck Ships	18" x 31"	26	3" x 2 1/2" x .28	28"	KNEES AT TOP	4'-11" x 1'-11"	18"	7'-0"
Particulars of Closing Appliances (state if capable of being manipulated from both sides).								
Poop Bulkhead								
Raised Quarter Deck Bulkhead								
Bridge, After Bulkhead								
Bridge, Forward Bulkhead								
Forecastle Bulkhead								
Exposed Machinery Casings on Freeboard or Raised Quarter Deck	BOILER ROOM ENTRANCE (PORT & STBD) STEEL DOORS 4'-11" x 1'-11" - SILLS 18" INCREASED TO RULE HT. BY FITTING SHIFTING BOARDS IN CHANNELS.							
Exposed Machinery Casings on Superstructure Decks	DRYING ROOM, WASH PLACE & W.C (PORT) " " 4'-11" x 1'-11" - " 18" WITH SPRING LOCKS & HANDLES BOTH SIDES.							
Machinery Casings within Superstructures not fitted with Class I Closing Appliances	LAMP ROOM, DECK STORE & W.C (STBD) " " 4'-11" x 1'-11" - " 18" WITH SPRING LOCKS & HANDLES BOTH SIDES.							
Deckhouses on Flush Deck Ships	GALLEY (PORT) STEEL DOOR 4'-11" x 1'-11" - SILL 18" WITH SPRING LOCKS & HANDLES BOTH SIDES. OFFICERS ACCOMMODATION (STBD) STEEL DOOR 4'-11" x 1'-11" - SILL 20" INCREASED TO RULE HT. BY FITTING SHIFTING BOARDS IN CHANNELS							

PARTICULARS OF PROTECTION TO OPENINGS, ETC.

The following diagrams should be used to indicate the positions of cargo and coaling hatchways, gangway, cargo and coaling ports, ventilators, companionways, etc., which would affect the seaworthiness of the ship:—



Particulars of fiddley, funnel and ventilator coamings, engine room skylight and other openings in machinery casing tops and their means of closing:—

CASING TOP PLATED OVER .26 THICK. FUNNEL 5'-6" DIAR. X .25 THICK. 2 STAKEHOLD VENTILATORS 24" DIAR. ✓
ENGINE ROOM SKYLIGHT (STEEL) STRONGLY CONSTRUCTED & FITTED WITH HINGED STEEL COVERS. ✓
VALVE HATCH 4'-3" X 3'-0" X .30 THICK FITTED WITH HINGED STEEL COVER - EFFICIENT SECURING ARRANGEMENTS FITTED. ✓
FIDLEY HATCH 4'-0" X 1'-10" FITTED WITH GRATING & HINGED STEEL COVER - " " " " ✓

Particulars of Flush Bunker Scuttles :—

UPPER DECK. 2 PLUSH BUNKER SCUTTLES (PORT & STBD) 21" DIAR. FITTED WITH CHAIN ATTACHMENT & LOCKING BARS. WOOLLONS TYPE N°2 WITH SCREW JOINT, ✓

Particulars of Companionways :—

UPPER DECK. CREWS COMPANION (STEEL) WITH STEEL DOOR-26 THICK. SILL 23" INCREASED IN HEIGHT BY SHIFTING BOARDS IN CHANNELS.
WITH SPRING LOCK & HANDLE BOTH SIDES. ✓

ENGINE ROOM ENTRANCE (STBD SIDE). WITH STEEL DOORS-30 THICK. SILL 20" INCREASED TO RULE HEIGHT BY SHIFTING BOARDS.
WITH SPRING LOCK & HANDLE BOTH SIDES. ✓

Particulars of Ventilators in exposed positions on freeboard and superstructure decks :—

UPPER DECK. 8" DIAR. FRENCH HEAD VENT ON TOP OF SKYLIGHT AT FORWARD END DECKHOUSE - 1'-11" TO OPENING. ✓
8" " COWL VENTILATOR " " " " " " " " COAMING 18" x 9/16" THK. ✓
3'-5" DIAR. G.N. VENTS (PORT) & 1 ON STBD SIDE TO ACCOMMODATION - 20" FROM DECK TO OPENING. ✓
2-8" DIAR. COWL VENTS (P. & S) TO ENGINE ROOM - COAMING 36" x 9/16" THICK. ✓
6" DIAR. FRENCH HEAD VENT (STD SIDE) E.R. CASING. 3'-8" HIGH. BRACKETED TO E.R. CASING SIDE. ✓
1-8" DIAR. COWL VENT (P. & S) TO ACCOMMODATION AFT - COAMING 34" x 5/16". ✓
3" DIAR. G.N. VENT (PORT) TO STORE AFT. 20" TO OPENING. ✓

BRIDGE DECK & CASING TOP. 2-6" DIAR. COWL VENTS TO GALLEY (PORT). COAMING 15" x 1/4". WOOD PLUGS & CANVAS COVERS SUPPLIED. ✓

1-6" " " " TO PASSAGE (STBD) " "
1-5" " G.N. VENT TO CABIN (STBD). ✓
2-3" " " " ACC. SPACES (P.R.S). ✓
1-5" " " " (P.R.S) to W.C.s

Particulars of Air Pipes in exposed positions on freeboard, raised quarter, or superstructure decks:—

3" DIAR AIR PIPE TO FORE PEAK TANK - GOOSENECK WELDED TO SAMPSON POST. PROTECTED BY BULWARK.	✓
2" " " TO GENERAL STORE (PORT) 21" TO OPENING.	" " " ✓
2 1/2" " & FILLING PIPE TO F.W. TANK (P. & S). 20" FROM DECK TO OPENING	" " " ✓ WOOD PLUGS & CANVAS
2 1/2" " PIPE TO BOILER FEED TANK (P. & S) 20" " " " "	" " " ✓ COVERS SUPPLIED. ✓
3" DIAR AIR PIPE TO AFTER PEAK TANK. 19" " " " "	" " " ✓

Particulars of Gangway Cargo and Coaling Ports:—

NONE.

Particulars of Scuppers and Sanitary Discharge Pipes :—

SCUPPERS. FROM UPPER DECK. 4- 5" x 3" SCUPPERS (P. 25) CUT THRO' SHELL. ✓

SANITARY DISCHARGE PIPES.

CREW'S W.C. (STBD) A" DIAR. DISCHARGE PIPE WITH N.R. STORM VALVE 12" BELOW UPPER DECK. ✓

OFFICERS' W.C. (PORT) 4" " " " " " " 10" " " " /

GALLEY SINK (PORT) 1 1/2" " " " " " " 48" " " " ✓

BATH ROOM (PORT 1 1/2" 4" " " " " " 15" " " "

Particulars of Side Scuttles :—

NO SIDE SCUTTLES BELOW UPPER DECK. ✓

ALL SIDELIGHTS TO ACCOMMODATION FITTED WITH HINGED DEADLIGHTS. ✓

Vertical distance of Sill of lowest Side Scuttle above top of keel

Particulars of Guard Rails :—

STEEL BULWARK ALL FORE & AFT. ✓

Particulars of Gangways, Lifelines, etc. :—


NONE

Particulars of Freeing Arrangements.						
	Length of Bulwark	Height of Bulwark	Size of Freeing Ports	Number each side	Area each side	Rule area each side
After Well	105'0"	3'0" TO 3'6" AT STEM.	5'4" x 1'10"	4.	21 sq.	
Forward Well						

State position of each freeing port { After Well:— FOR POSITION SEE SKETCH ON PAGE 1.
(F. and A. position and height above deck edge) { Forward Well:— 7'4" ABOVE DECK. ✓

State whether the freeing ports are fitted with shutters, bars, or rails, and give particulars of such:— 1-1" DIAM. BAR. ✓

Additional area where sheer is less than standard.



© 2021
Lloyd's Reg
Foundation

PARTICULARS OF PROTECTION TO OPENINGS, ETC.

HATCHWAYS ON FREEBOARD AND SUPERSTRUCTURE DECKS									
TRUNK TOP									
COALING HATCHWAYS									
HATCHWAY TO STORE AFT									
Description of Hatchway
Dimensions of Hatchway
COAMINGS	Height above Deck
	Thickness
	Stiffeners
	Brackets, Stays
HATCH BEAMS	Number
	Spacing
FORE AND AFTERS	Number
	Spacing
HATCH COVERS	Material
	Thickness
Spacing of Cleats	
Number of Tarpaulins	

*Are wood fore and afters steel shod at all bearing surfaces? *None.*

Are battens and wedges efficient and in good condition? *Yes.*

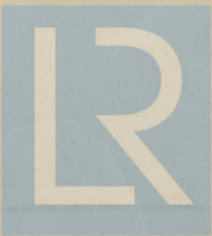
Are tarpaulins in good condition and in accordance with rule requirements? *Yes.*

Are lashings provided in accordance with rule requirements? *Yes.*

Particulars of any special features:—

Endorsement at first survey and at surveys for renewal of Certificate:—

The fittings and appliances are in accordance with the particulars shown on this form (or as now modified) and are in good condition.



© 2021

Lloyd's Register
Foundation