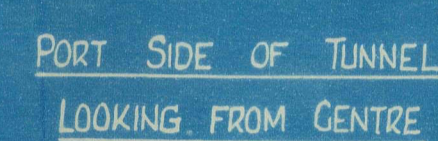
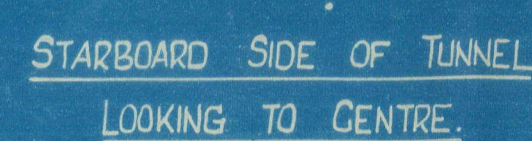
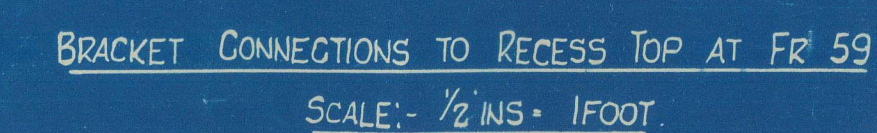
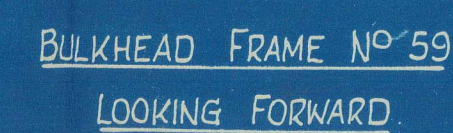
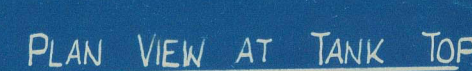
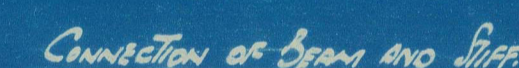
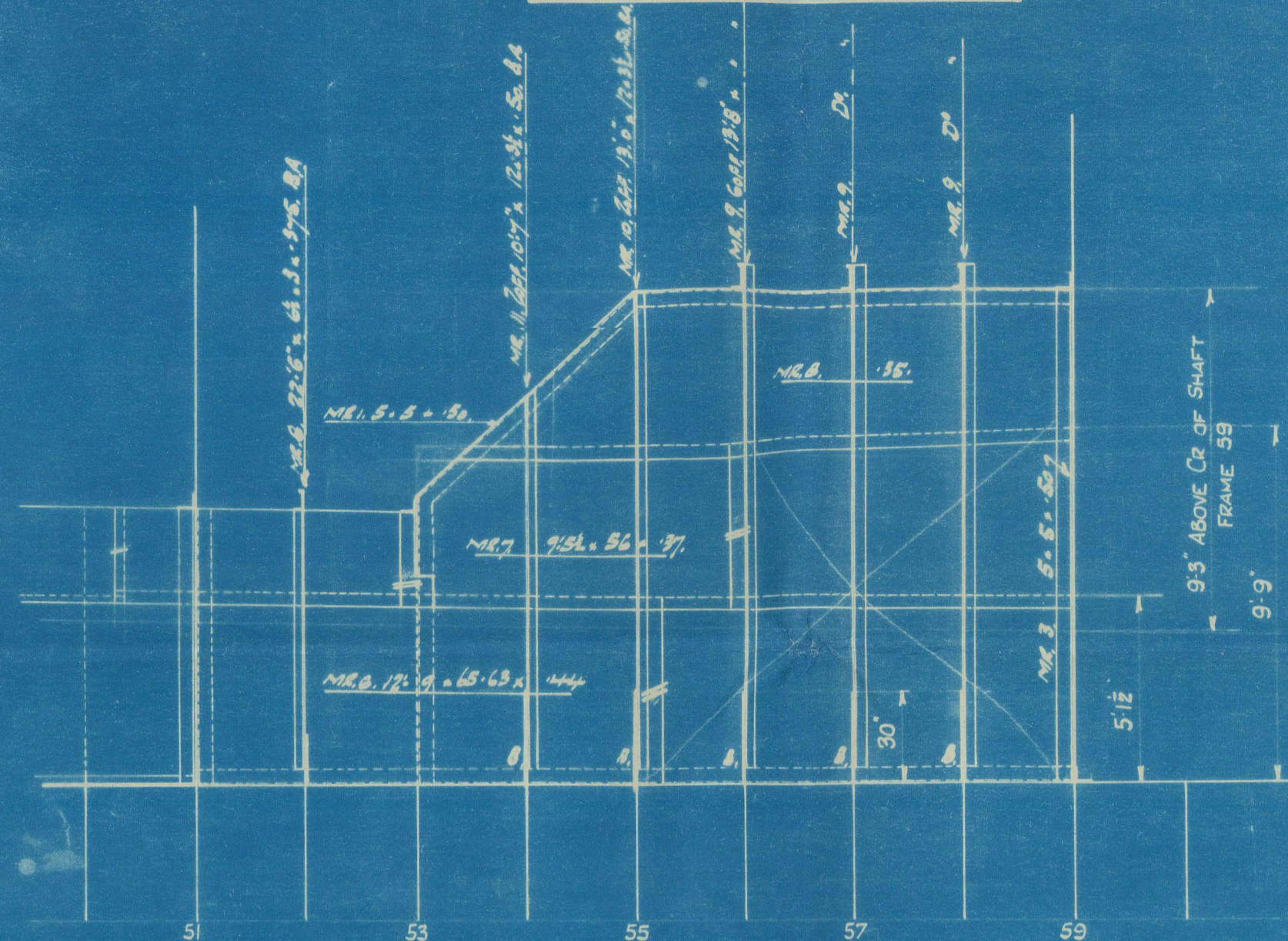


SCALE:- $\frac{1}{4}$ " INCH = ONE FOOT

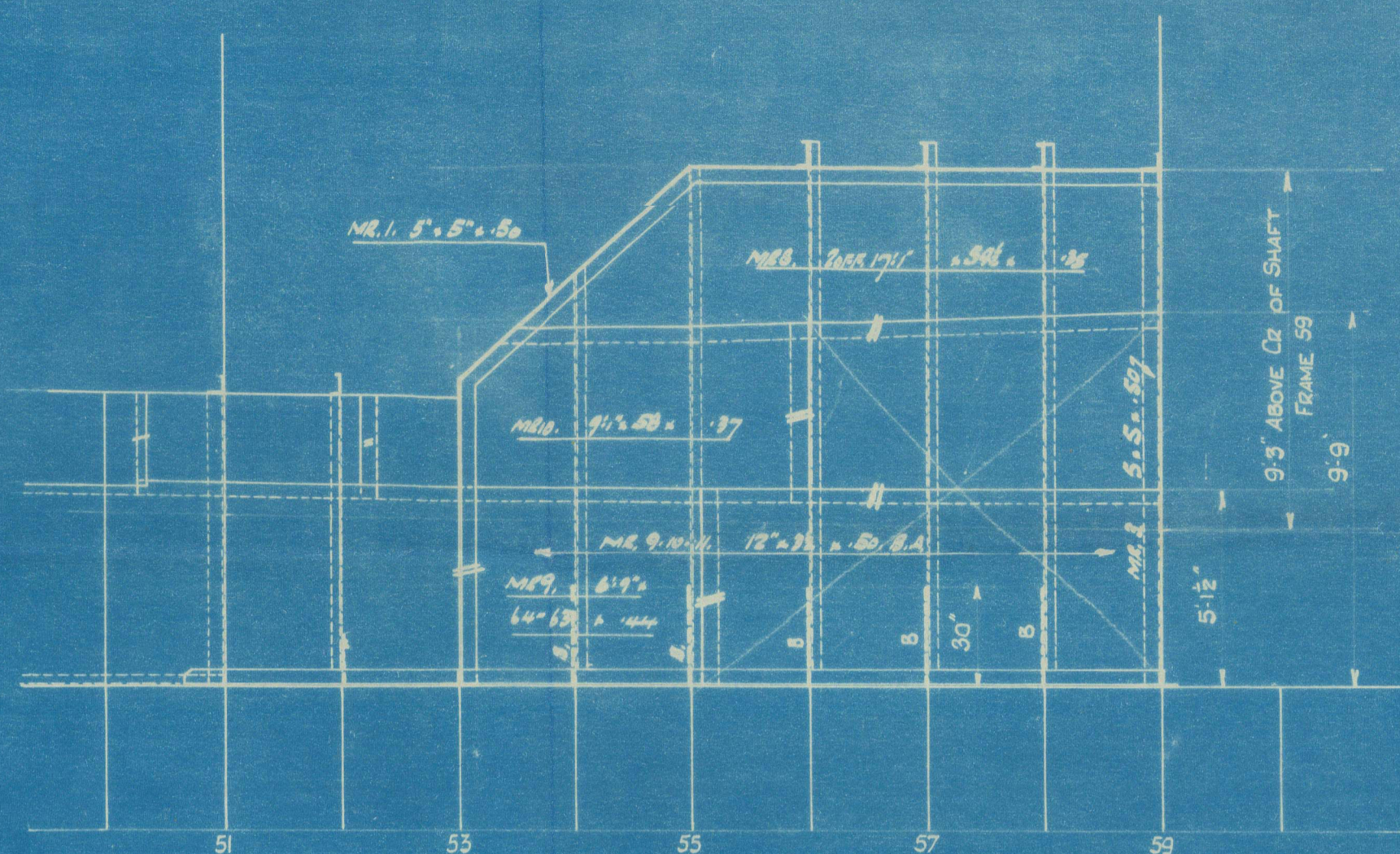
[illegible]

OF KIMBERLEY MOTOR ROOM

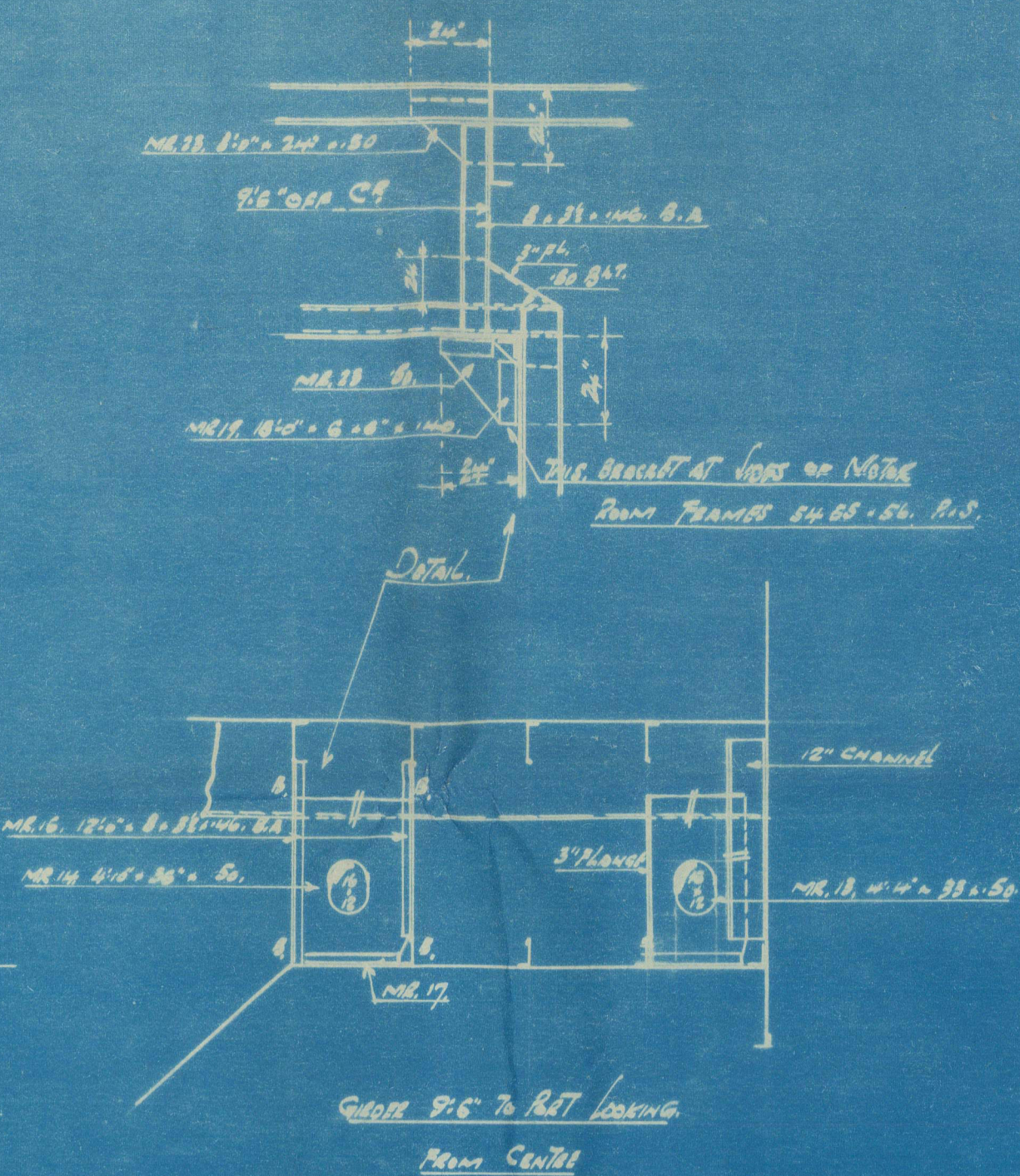
SCALE: 1/4" INCH = ONE FOOT



STARBOARD SIDE OF TUNNEL
LOOKING TO CENTRE.

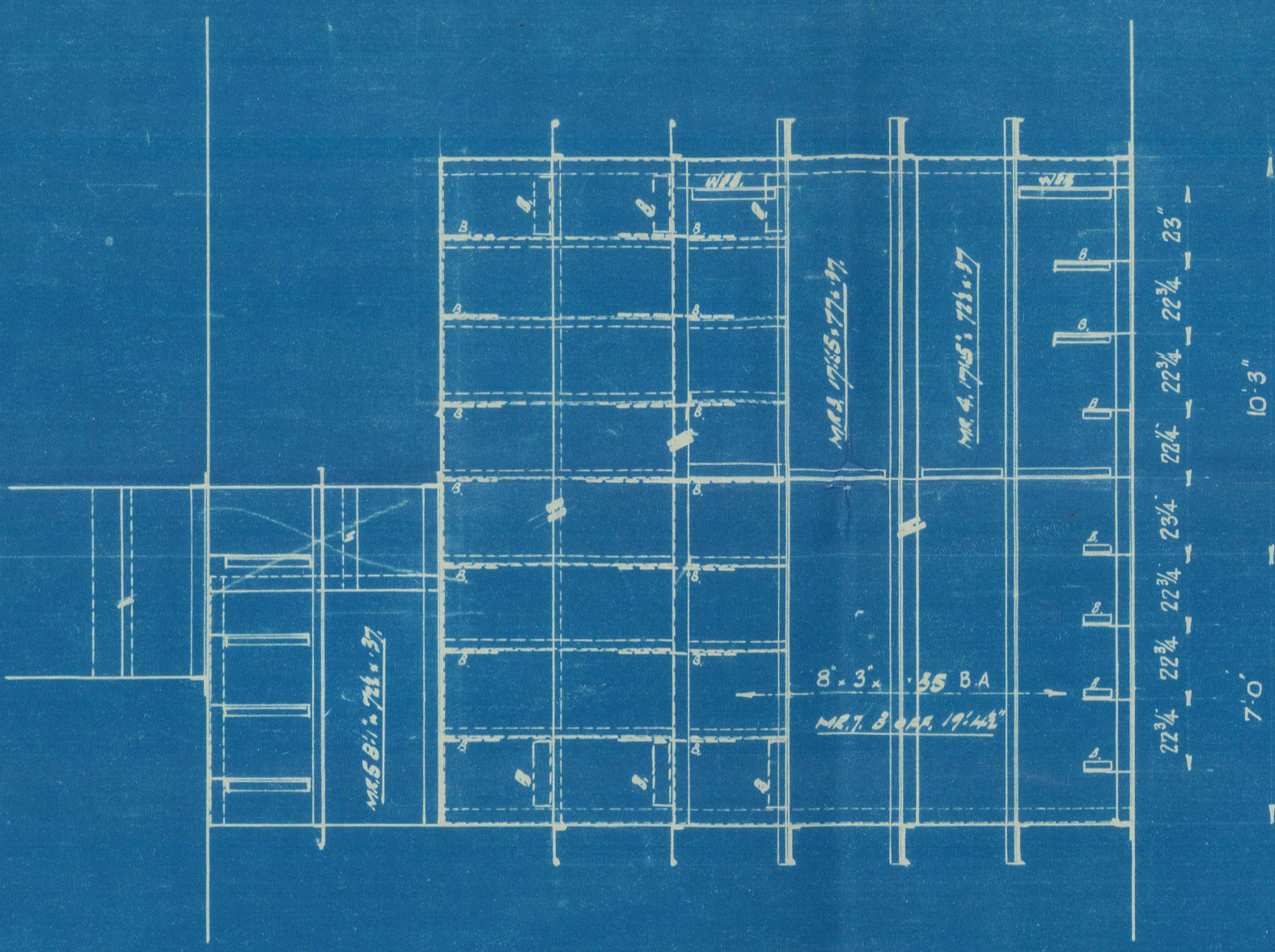


PORT SIDE OF TUNNEL
LOOKING FROM CENTRE

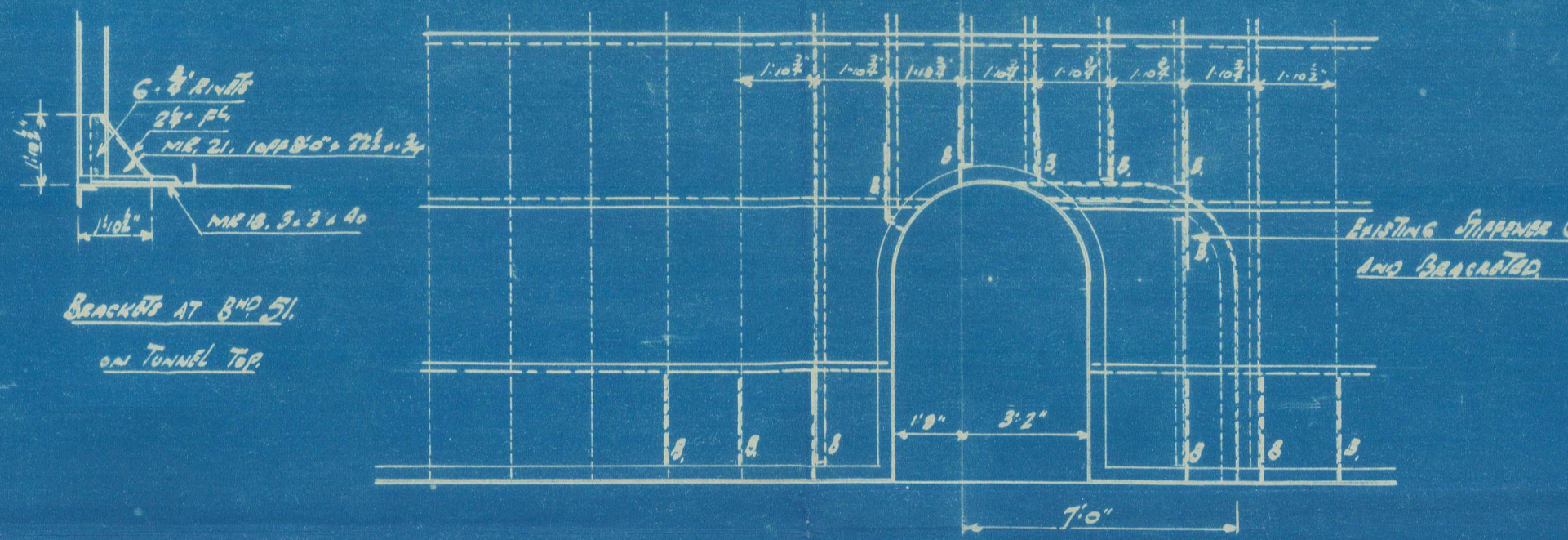


RIVETING

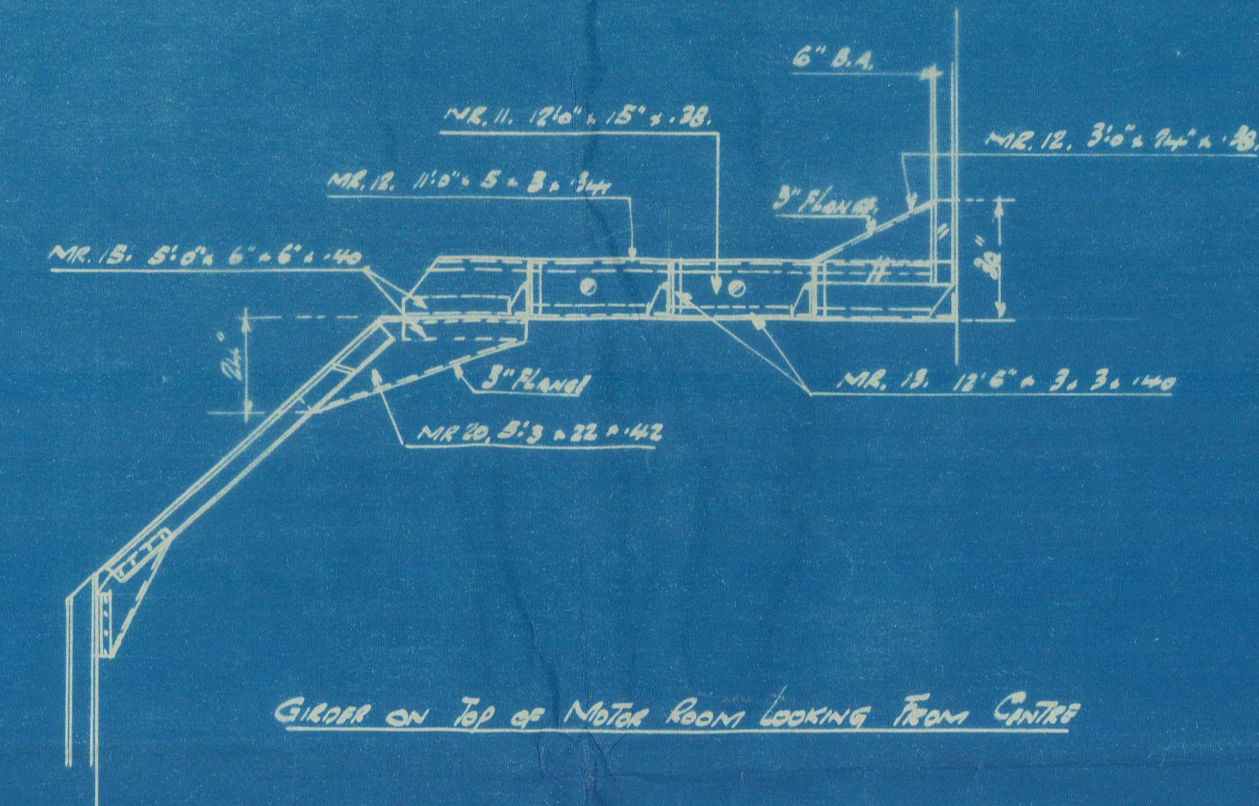
BRIDGES BARS TO TANK TOP	7/8" Dia. 4 1/2" apart each way
" " " " " "	3/4" " " "
STAINLESS, BUTTS	3/4" " 2 1/2"
STAINLESS	3/4" " 4 1/2"
GIRDER COVERS TO TOP, GIRDERS	3/4" " 3 1/2"
FACE ANGLE ON GIRDERS	3/4" " 5 1/4"



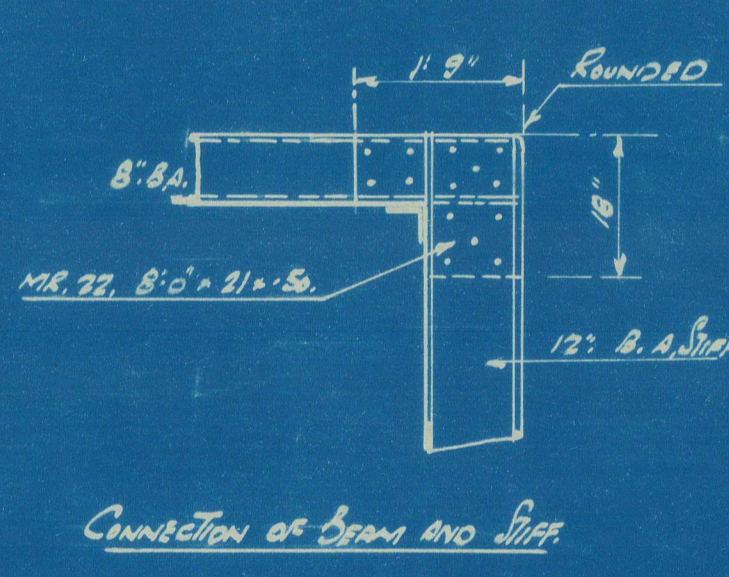
PLAN VIEW AT TUNNEL TOP



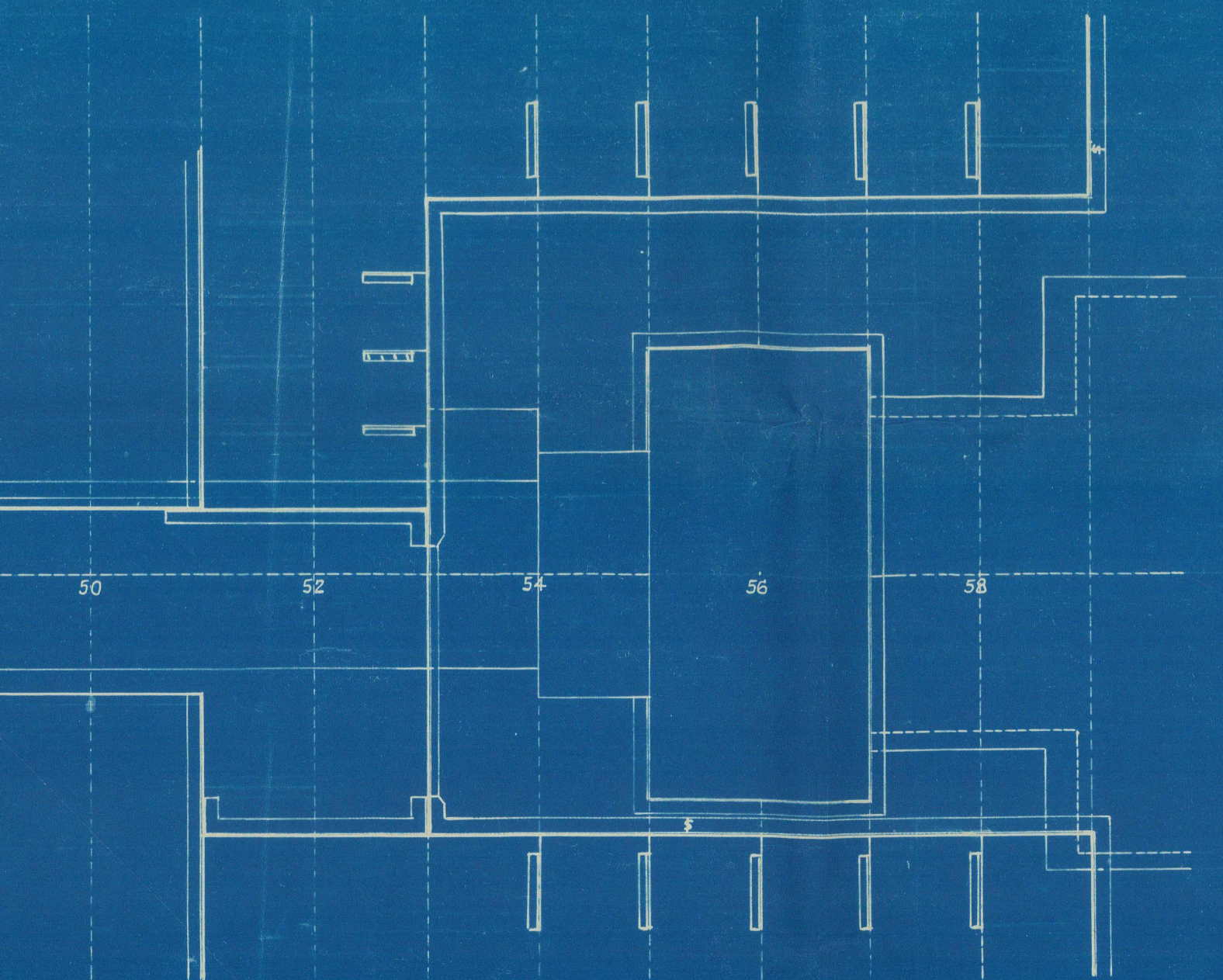
BULKHEAD FRAME NO 51
LOOKING FORWARD



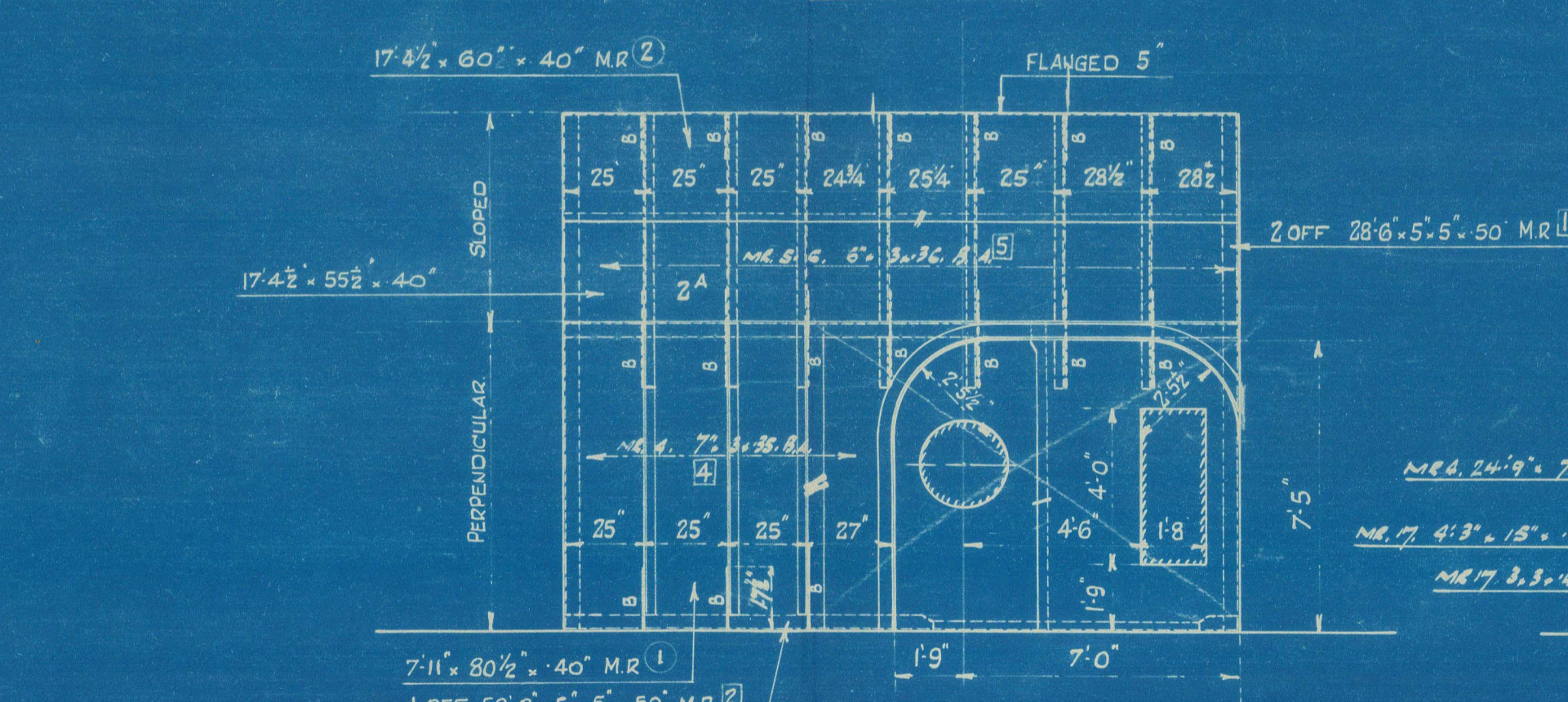
F.A. SECTION THRU MOTOR ROOM



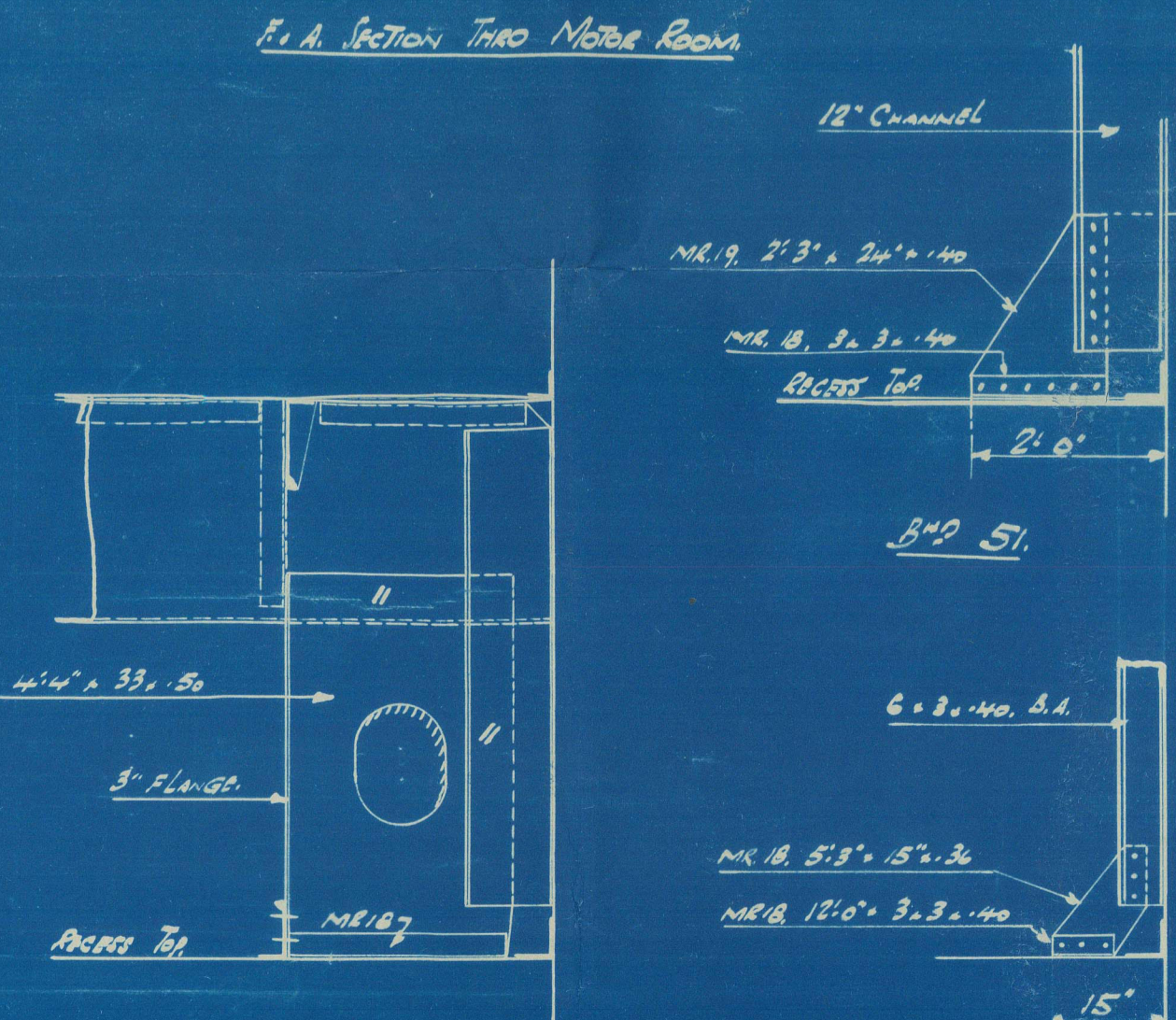
CONNECTION OF BEAM AND GIRDER



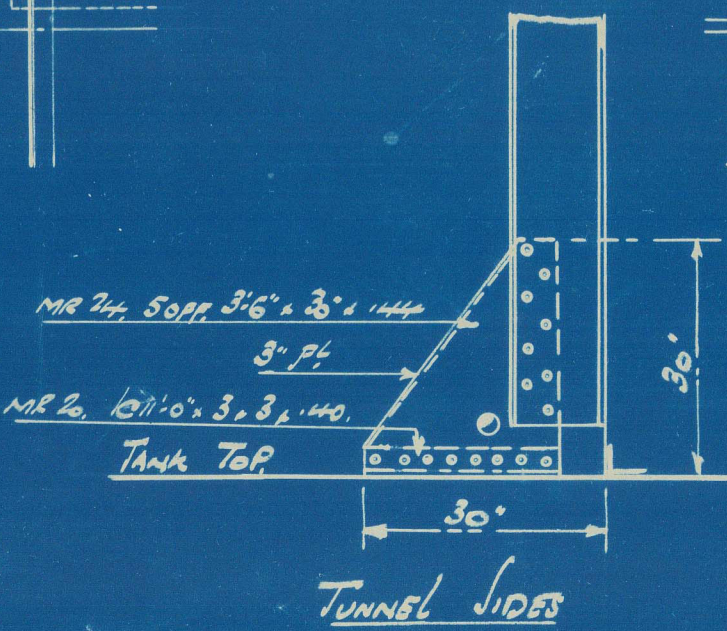
PLAN VIEW AT TANK TOP



BULKHEAD FRAME NO 53
LOOKING FORWARD



BRACKET CONNECTIONS TO RECESS TOP AT FR 59
SCALE: 1/2" INCH = ONE FOOT



TUNNEL SIDES

BULKHEAD FRAME NO 59
LOOKING FORWARD

copy made from
9/8/53



013444-013453-00873A

Copy of original plans
from the
National Archives and Records Administration

"City of Kimberley"

Motor Room

Belfast Rpt 11175

013 449-013453-0087



© 2021

Lloyd's Register
Foundation