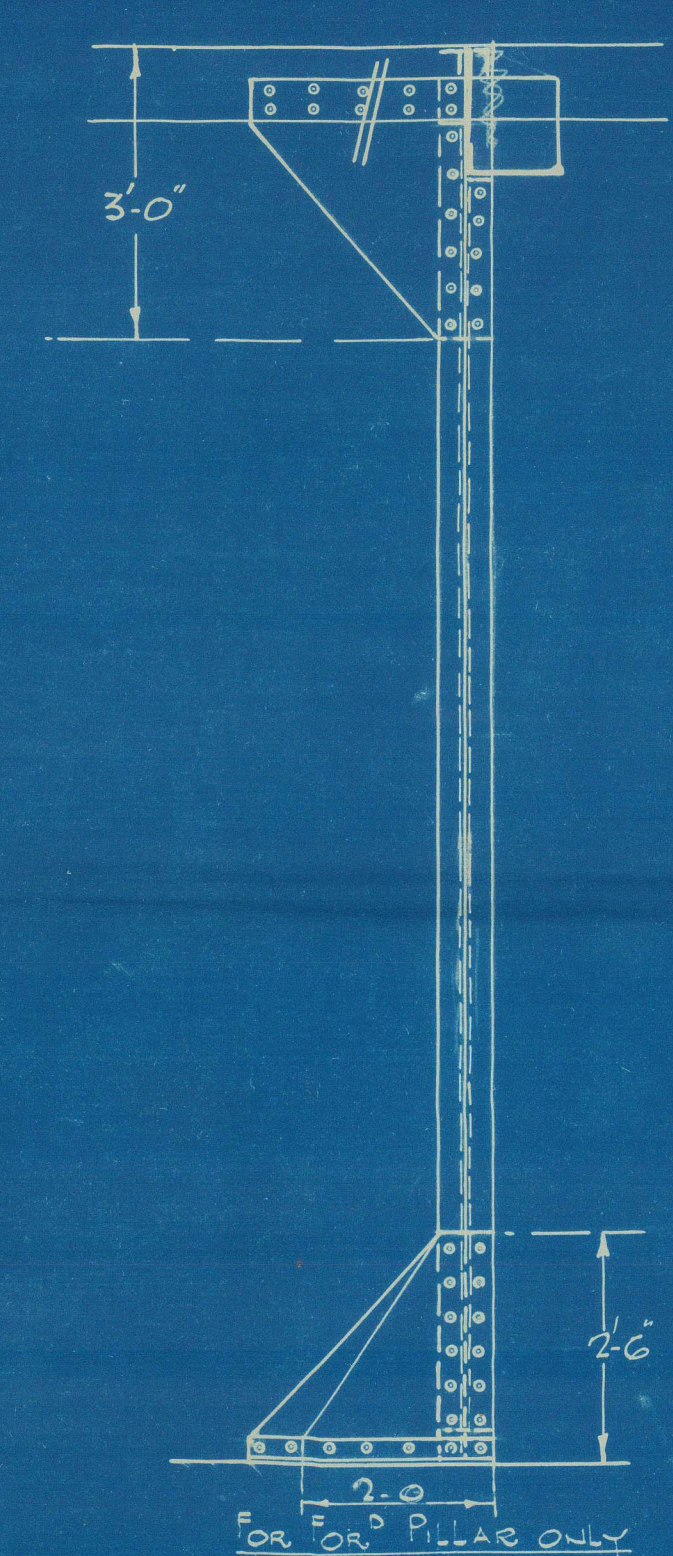
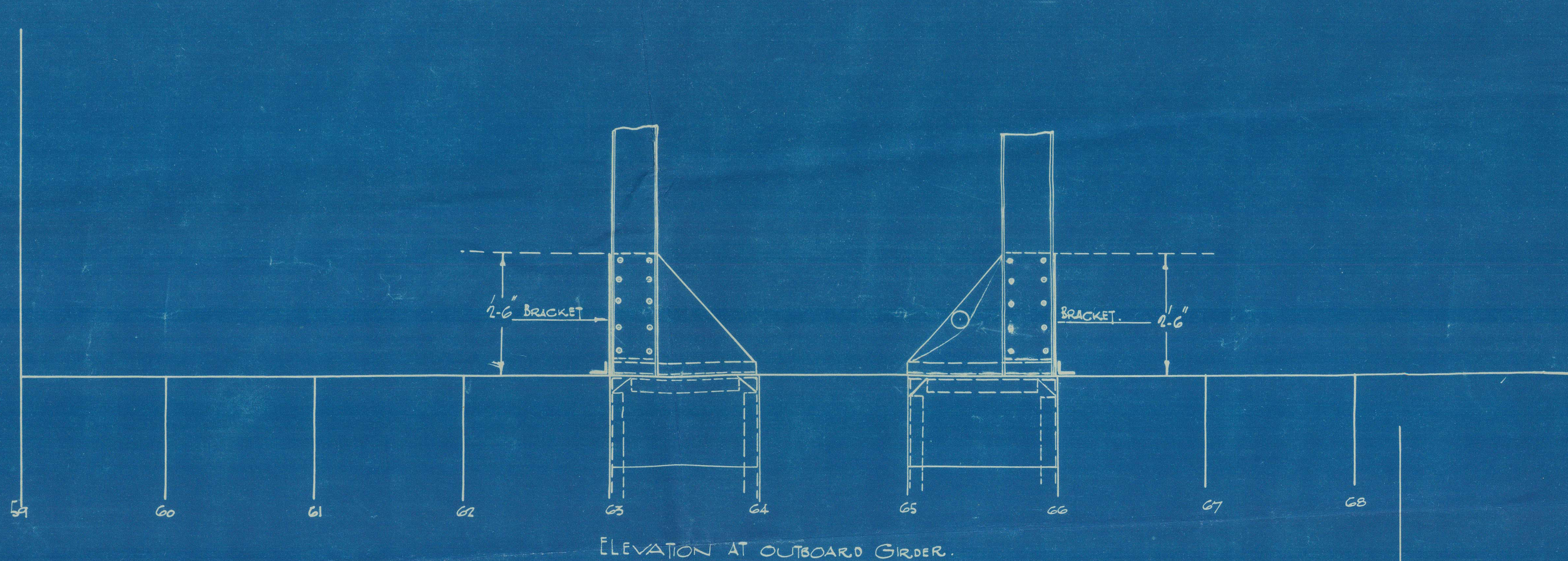
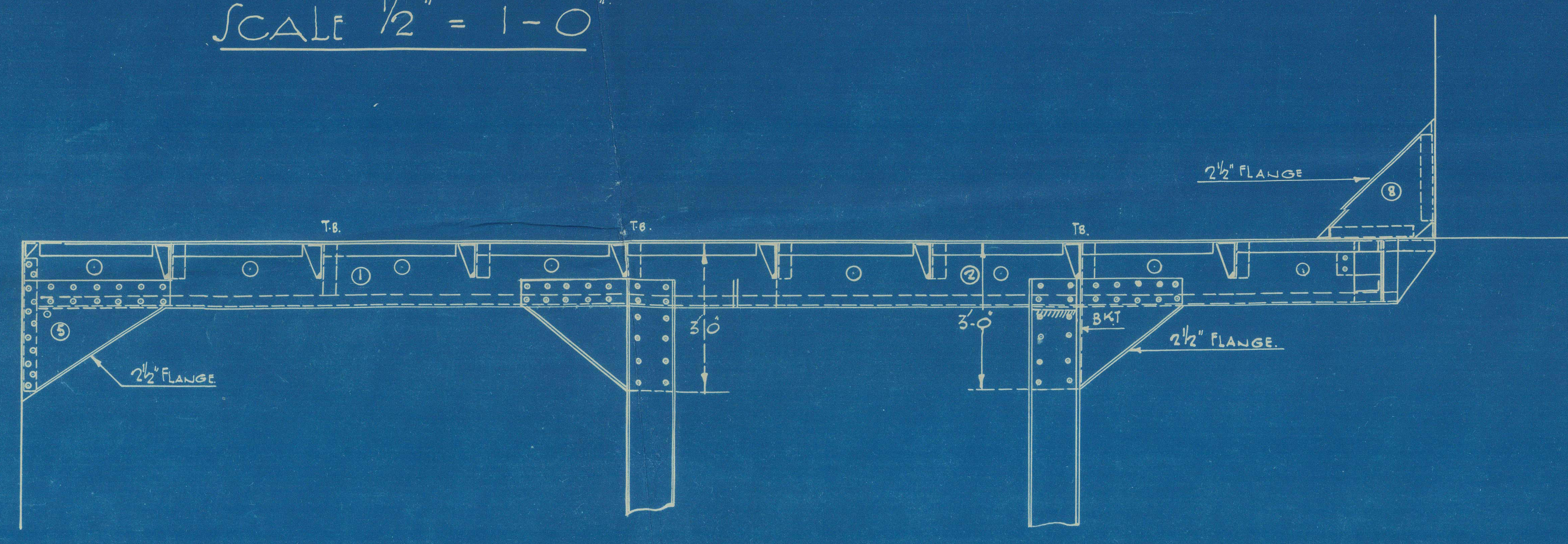


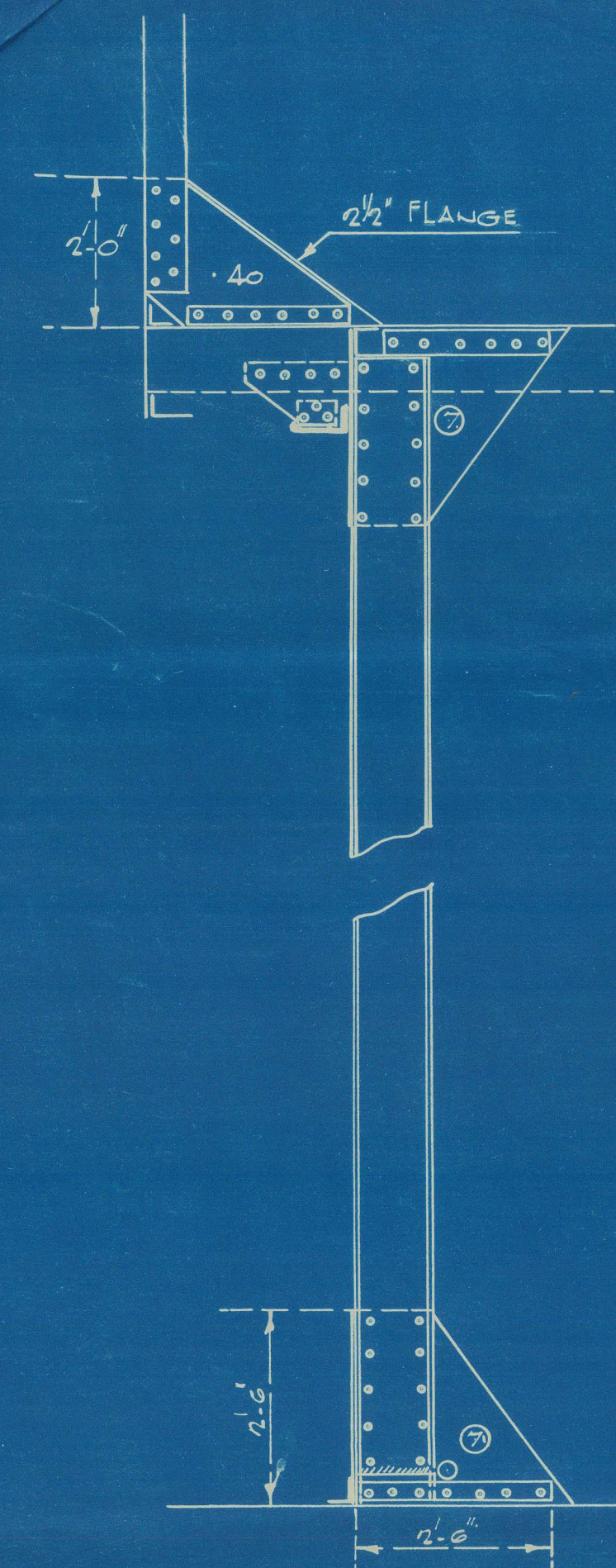
# S.S. CITY OF KIMBERLEY

## GIRDERS UNDER ALTERNATOR FLAT

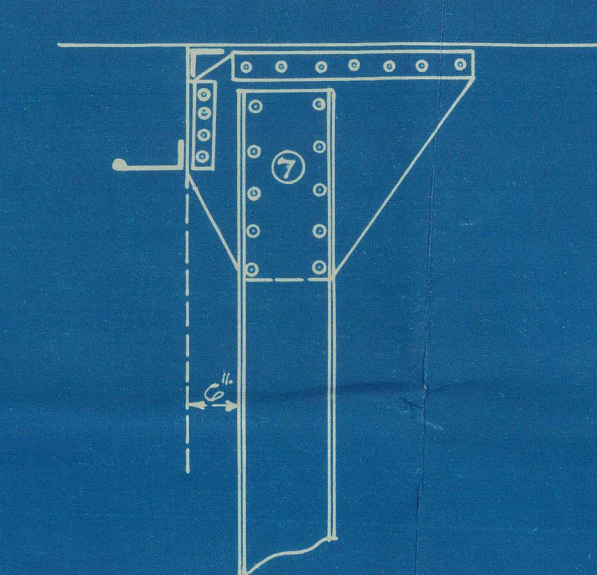
SCALE  $\frac{1}{2}" = 1'-0"$



DETAIL OF THWARTSHIP BRACKET.



DETAIL OF THWARTSHIP BRACKETS.



DETAIL OF PILLAR CONNECTION TO DECK.

| MATERIAL ORDER |    |    |        |    |     |   |   |    |   |       |       |
|----------------|----|----|--------|----|-----|---|---|----|---|-------|-------|
| 1              | 1  | 15 | 0      | 16 | .58 | 3 | 1 | 25 | 0 | 3     | .38   |
| 1              | 2  | 15 | 10     | .  | .   | 1 | 2 | 0  | 5 | 5     | .44   |
| 1              | 3  | 12 | 0      | .  | .   | 2 | 3 | 32 | 0 | 3 1/2 | .44   |
| 1              | 4  | 15 | 0      | .  | .   | 2 | 4 | 27 | 0 | 8     | 3 1/2 |
| 1              | 5  | 3  | 9      | 36 | .38 | 8 | 5 | 19 | 0 | 12    | 3 1/2 |
| 1              | 6  | 4  | 7      | 30 | .38 |   |   |    |   |       |       |
| 2              | 7  | 12 | 0      | 30 | .42 |   |   |    |   |       |       |
| 1              | 8  | 6  | 6      | 33 | .42 |   |   |    |   |       |       |
| 1              | 9  | 8  | 0      | 14 | .38 |   |   |    |   |       |       |
| 4              | 10 | 2  | 18 1/2 | 21 | .42 |   |   |    |   |       |       |

| RIVETING                                  | RIVET | PITCH     |
|---|-------|-----------|
| CHOCKS TO DECK                            | 3/4   | - 4       |
| CHOCKS TO GIRDERS                         | 3/4   | - 4       |
| FACE BAR TO GIRDERS                       | 3/4   | - 5 1/4   |
| PILLAR BRACKETS                           | 3/4   | AT FIELD. |
| CHANNELS TO EACH OTHER                    | 3/4   | - 6       |
| TANK TOP CONNECTIONS                      | 3/8   | - 4 3/8   |
| ALL BRACKET PLATES TO HAVE A HARD BEARING |       |           |
| FIT ON TANK TOP.                          |       |           |



013449-013453-0085

"Cities of Kimberley"

Girders under

Alternator Flat.

Belfast Report 11175



© 2021

Lloyd's Register  
Foundation