

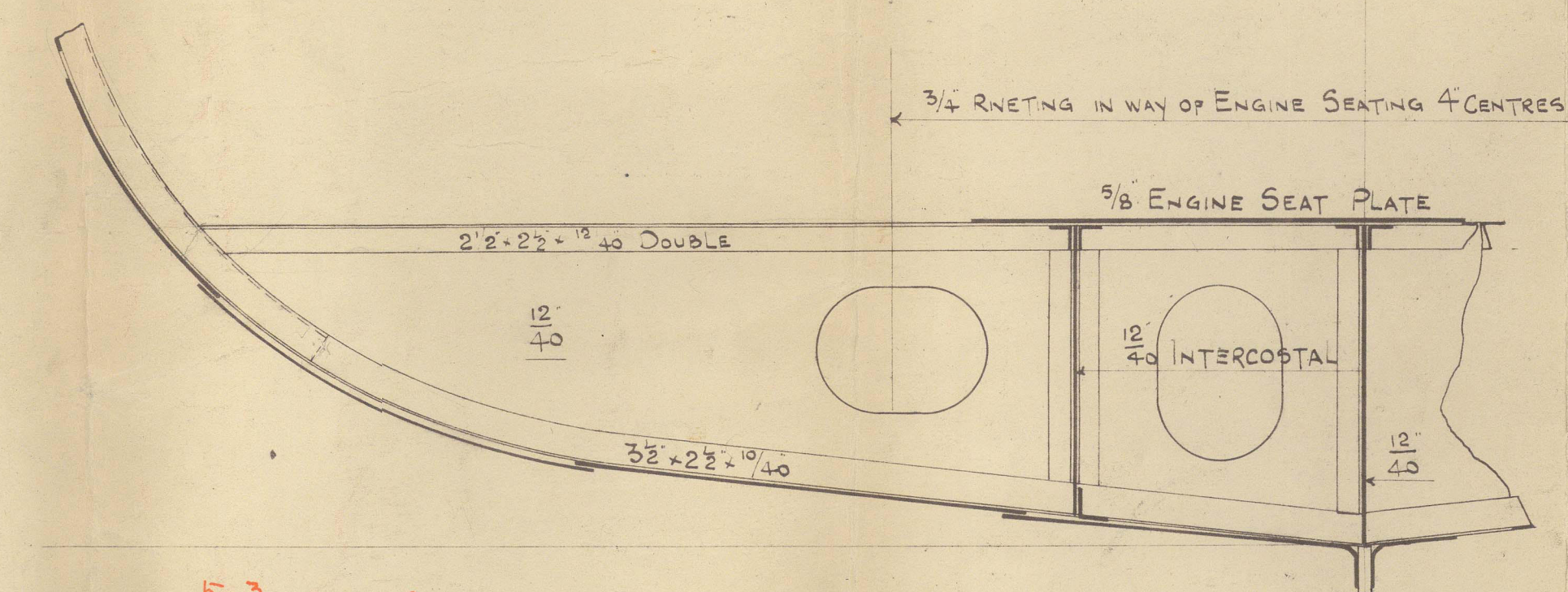
MIDSHIP SECTION.
STEEL SCREW TUCS N^{OS.} 182-3

DIMENSIONS 115'-0" B.P. x 23'-6" x 12'-6" MLD.

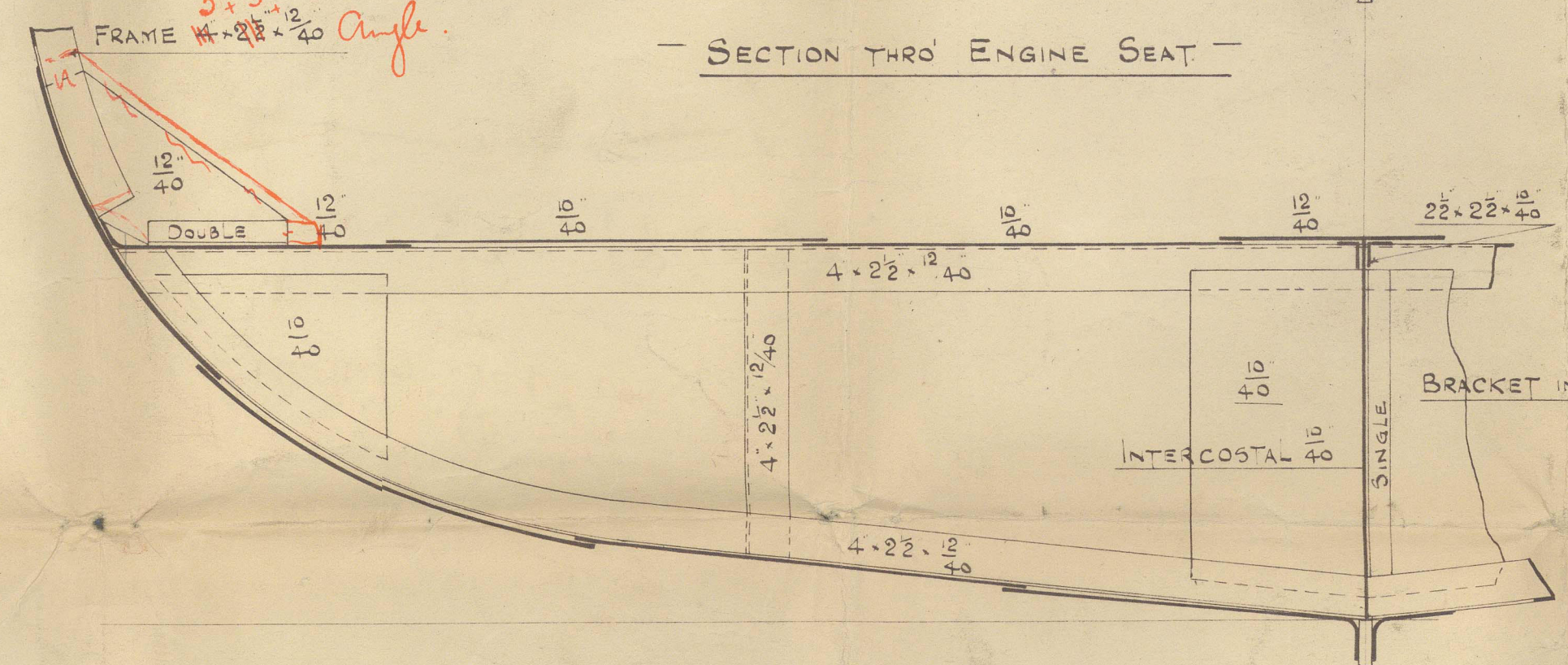
CLASS B.S.* TOWING PURPOSES.

SCALE $\frac{3}{4}$ INCH = 1 FOOT.

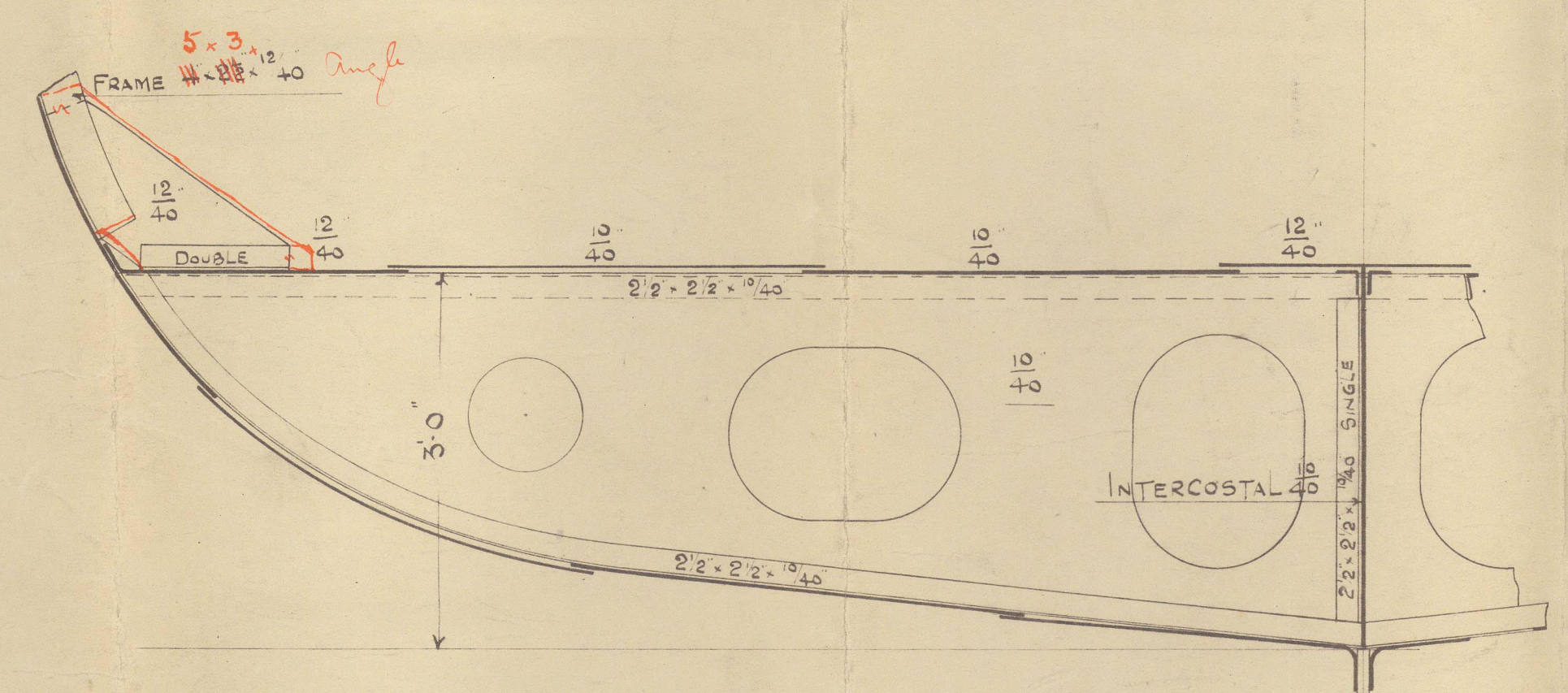
NOTE:- BELTING BOLTED TO ANGLES BY $\frac{3}{4}$ " SNAP HEAD BOLTS SPACED ABOUT 21" APART WELL OUT ON ANGLE WEBS. CONNEX FASTENED BY $\frac{3}{4}$ " COUNTERSUNK WOOD SCREWS ABOUT 12" APART EXCEPT AT ENDS WHICH ARE TO BE BOLTED THROUGH HULL. ALL FASTENINGS GALVANIZED.



— SECTION THRO' ENGINE SEAT. —

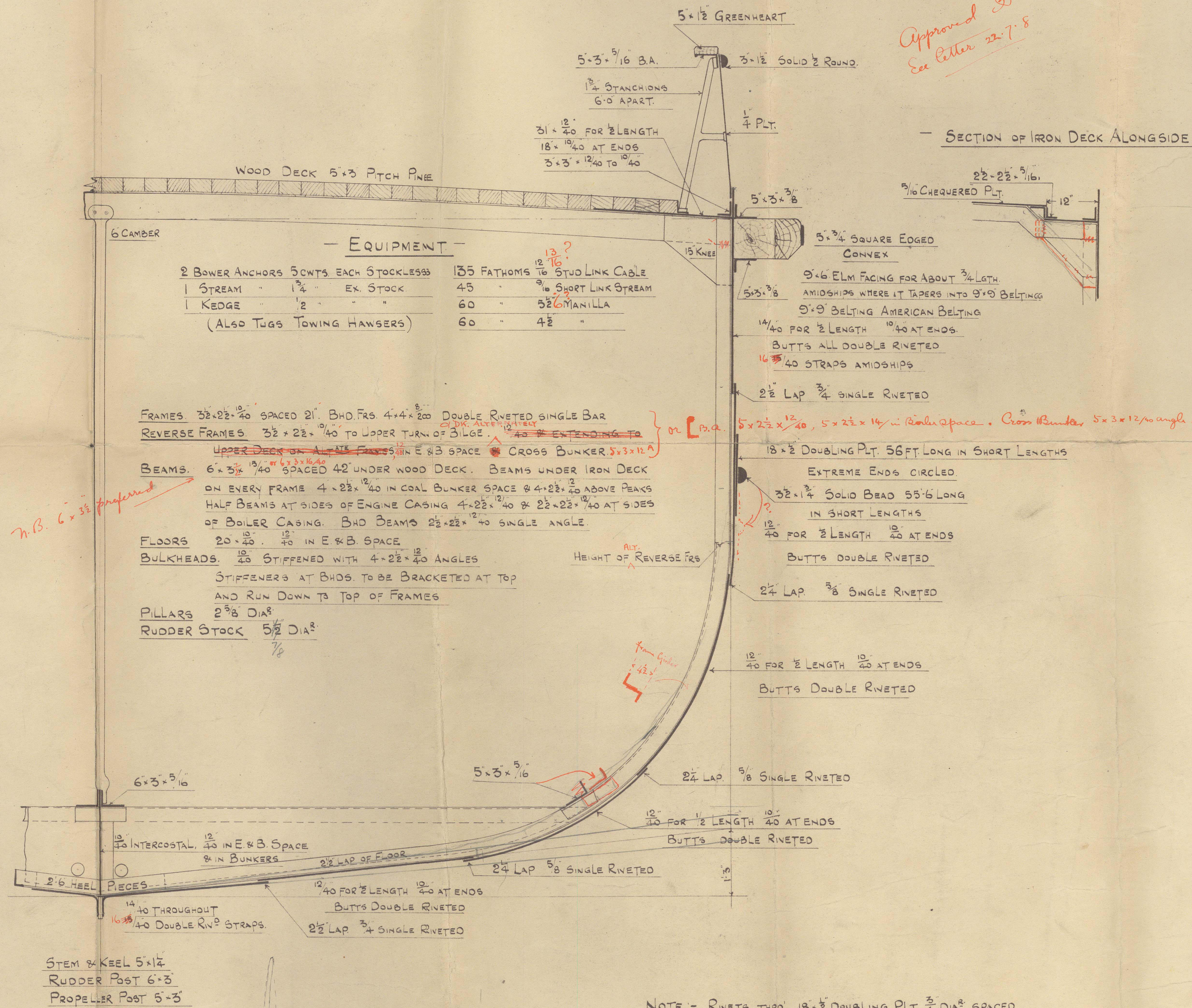


SECTION AT FRAMES 28 30 & 32.



SECTION AT FRAMES 29, 31 & 33.

FERGUSON BROS,
PORT-GLASGOW.



NOTE:- RIVETS THRO' 18" $\frac{1}{4}$ " DOUBLING PLT. $\frac{3}{4}$ " DIA³ SPACED
3 $\frac{1}{2}$ " APART, COUNTERSUNK INSIDE. HALF ROUND IRON
TO BE RIVETED TO DOUBLING PLT. BEFORE DOUBLING
IS FITTED TO SHELL.
RIVETS THRO' BELTING ANGLES $\frac{3}{4}$ " DIA³ SPACED
3 $\frac{1}{2}$ " APART COUNTERSUNK INSIDE

Midship Section

Ferguson Bros 182-3

~~now Heroine X~~

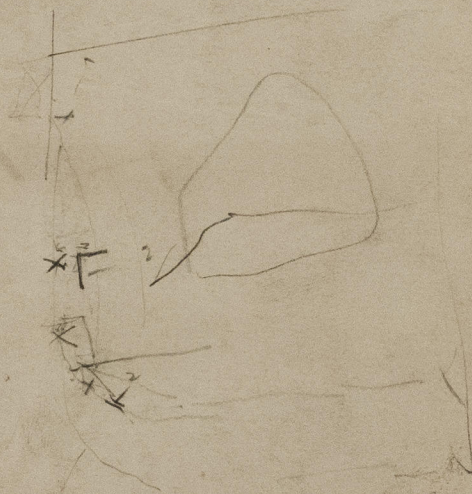
S Aug Flying Serpent

~~T.C. 26-8-8~~

S - Flying Cormorant.

NOW

BUDDOM



122-9
115-0
112-6
47
19



© 2021

Lloyd's Register
Foundation

013403-013408 0056