

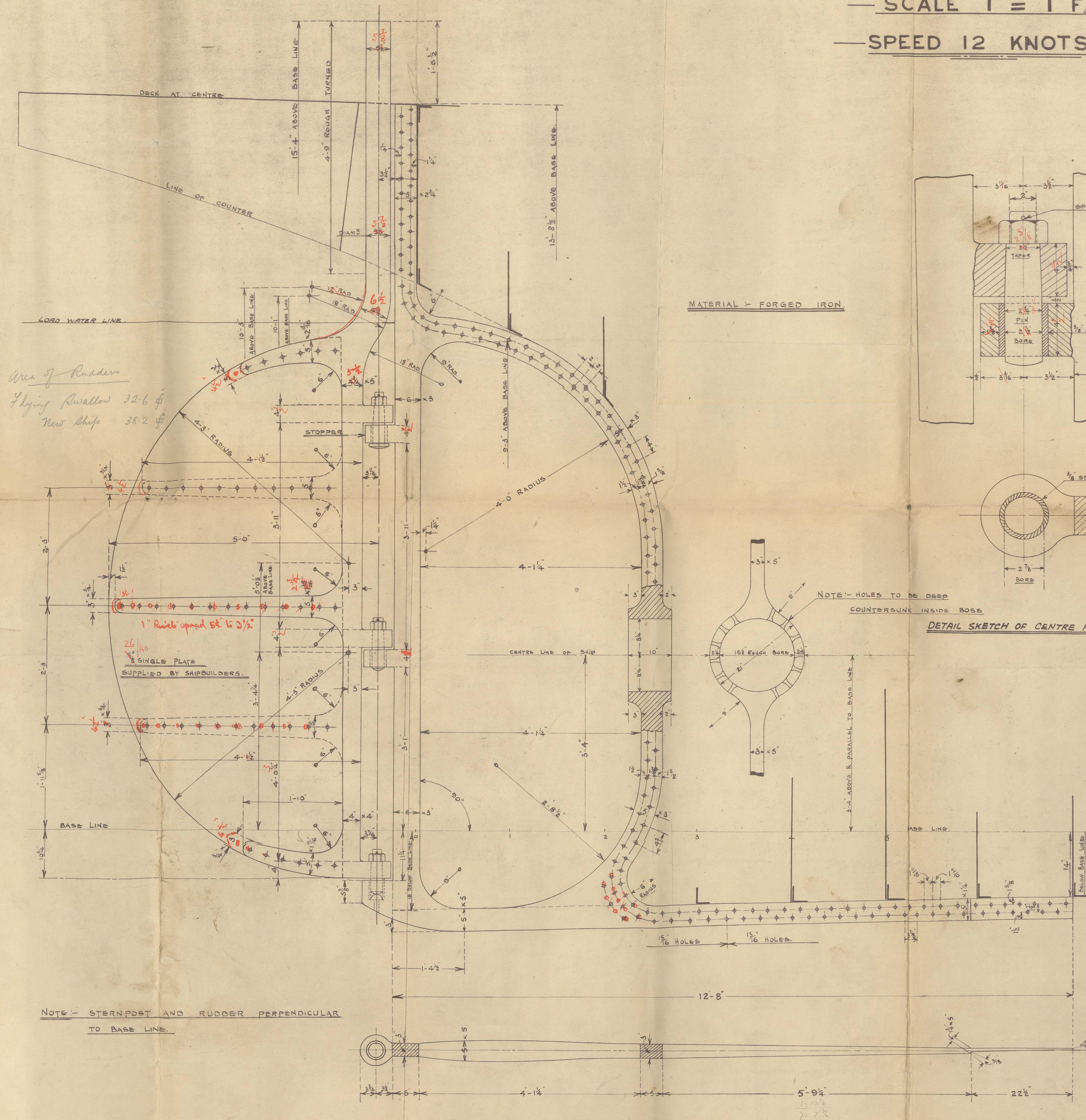
FERGUSON BROS.
PORT-GLASGOW.

STERNPOST & RUDDER.

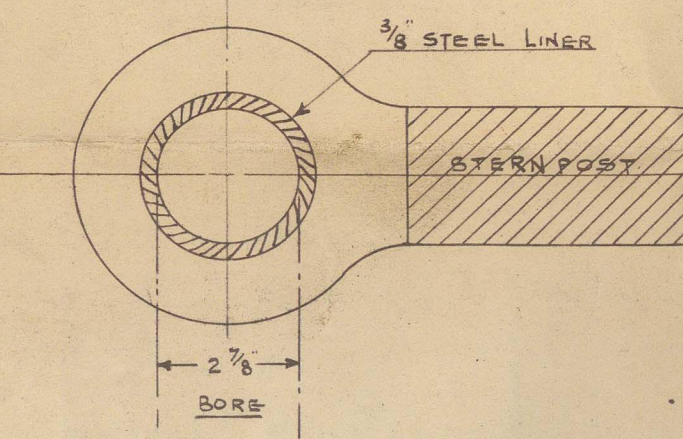
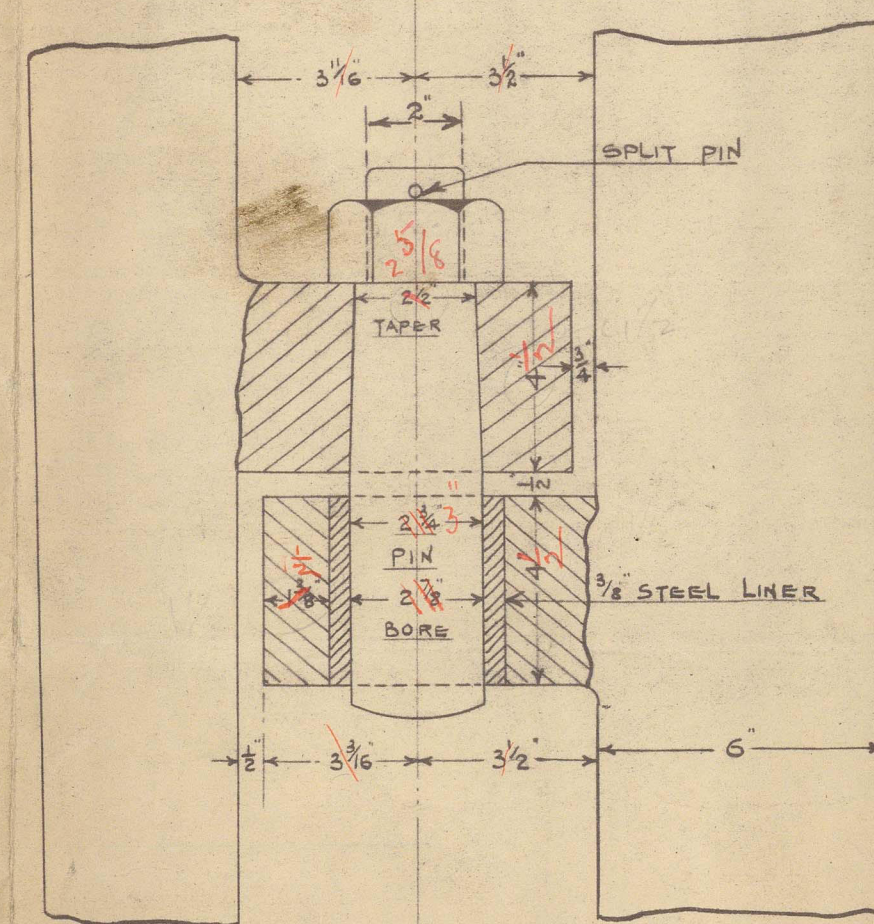
S. S. TUCS N^{os} 182-3.

— SCALE 1" = 1 FT —

SPEED 12 KNOTS. —

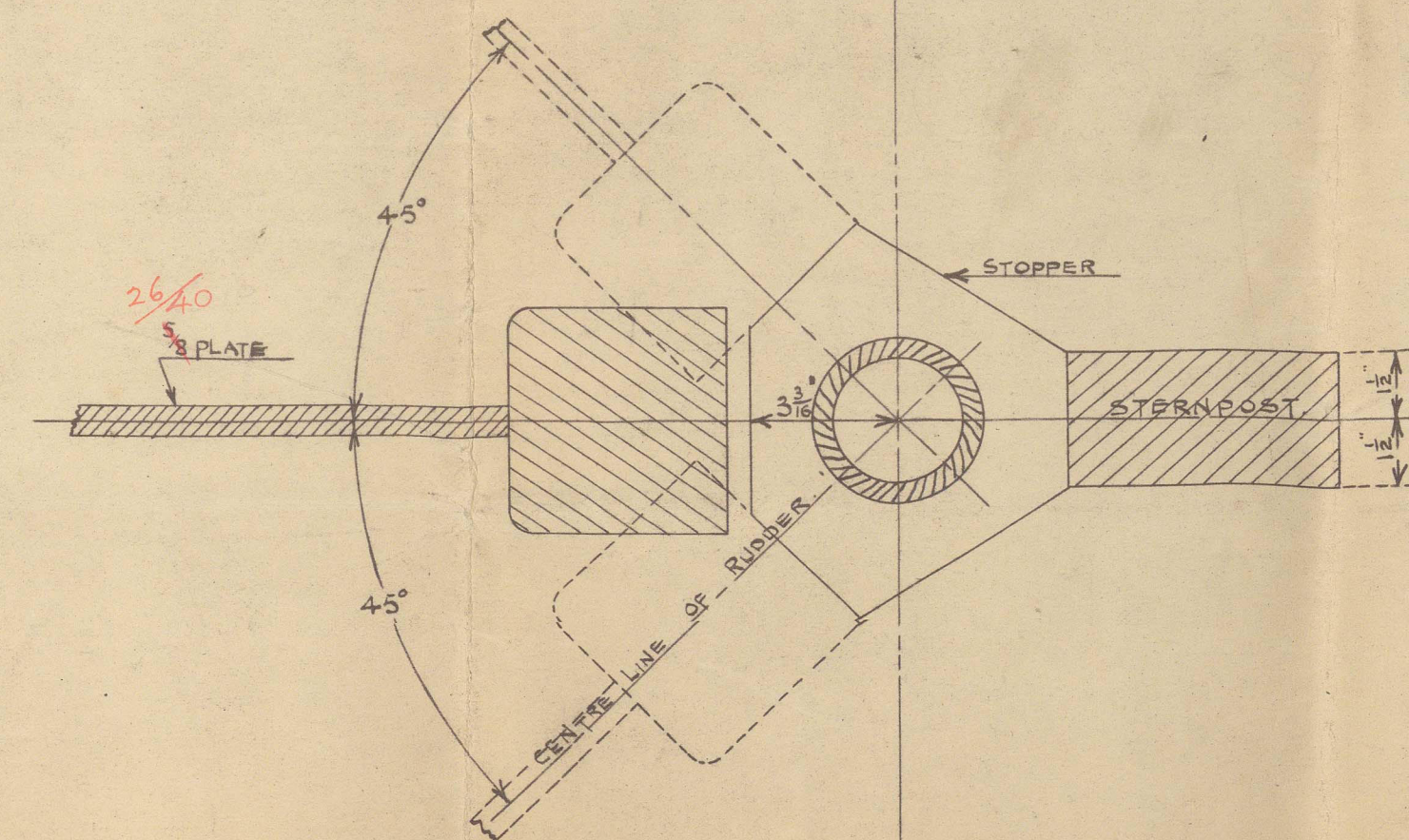
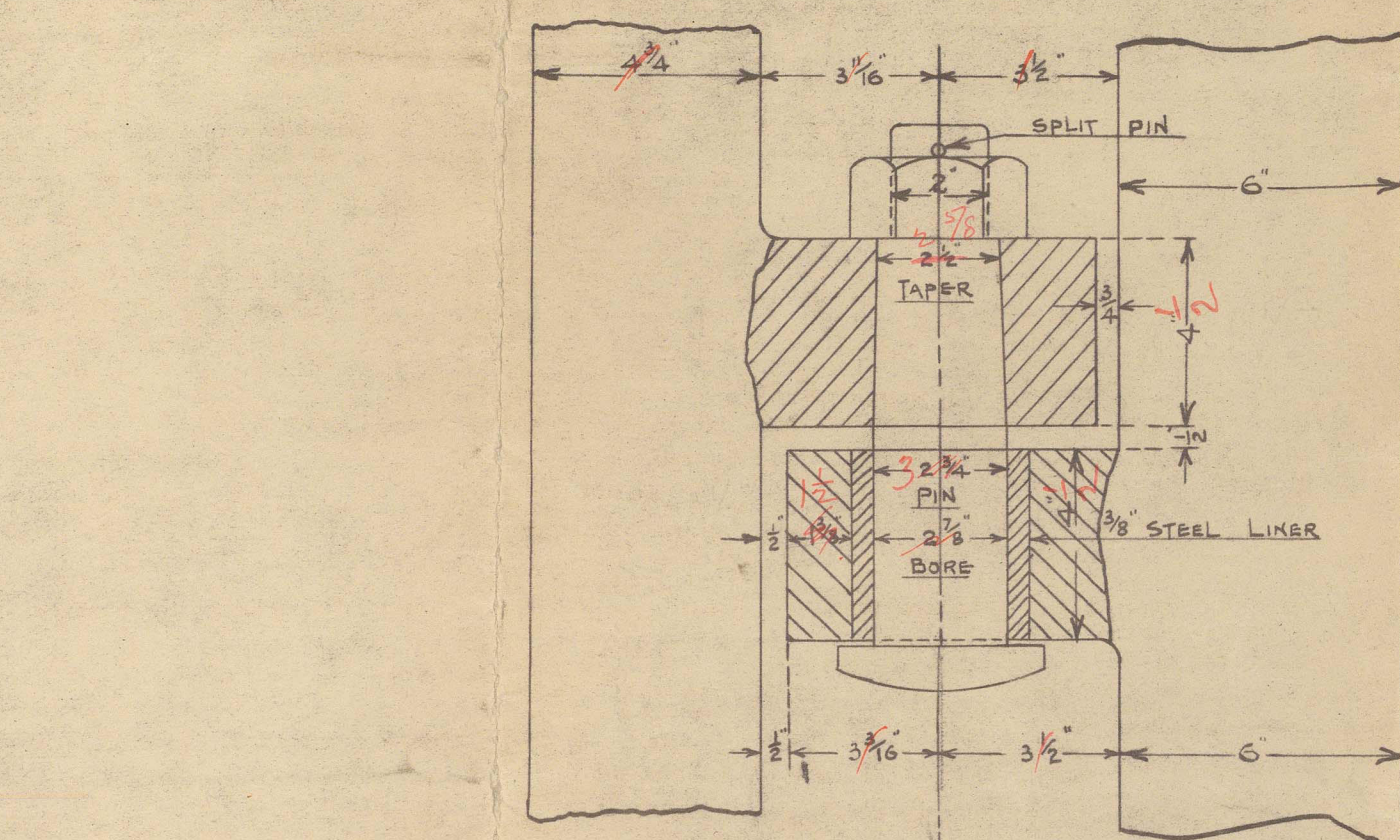


MATERIAL :- FORGED IRON

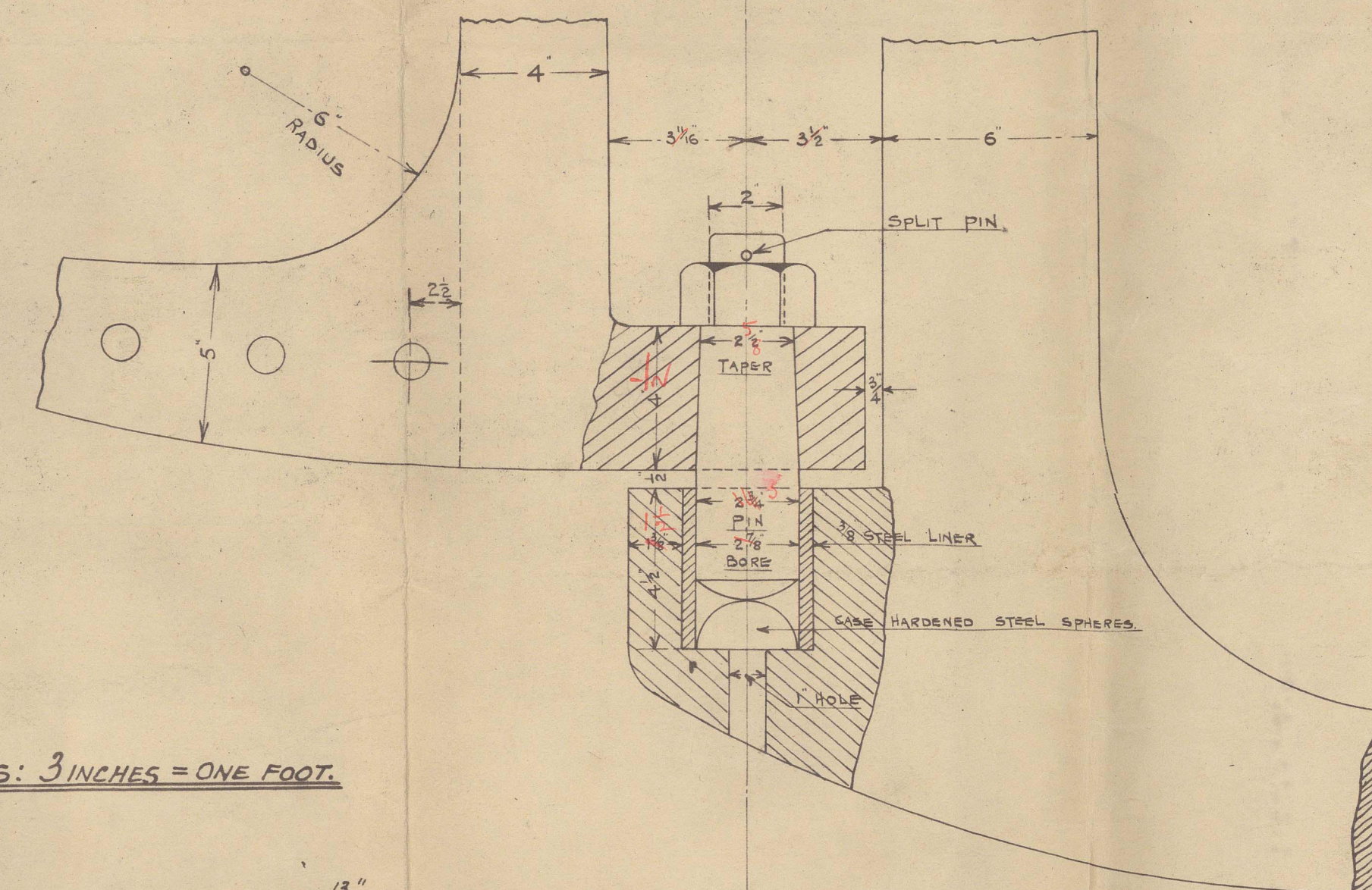
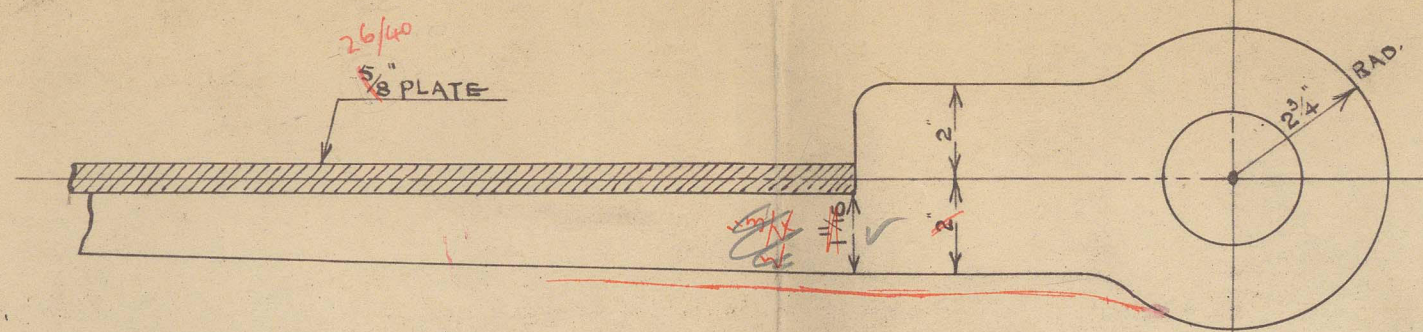


NOTE:- HOLES TO BE DEEP
COUNTERSUNK INSIDE BOSS

DETAIL SKETCH OF CENTRE PINTLE.

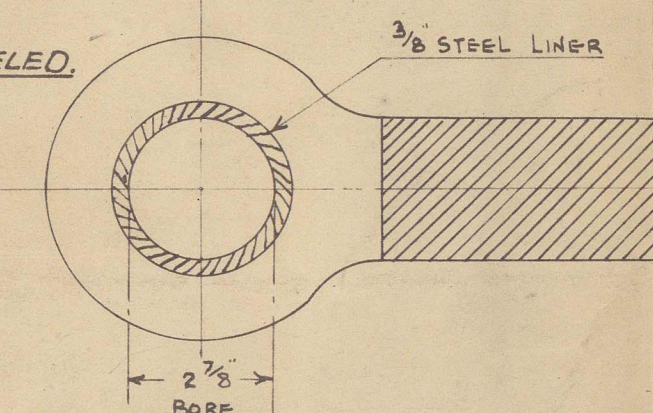


DETAIL SKETCH OF TOP PINTLE AND STOPPER.



SCALE OF DETAILS: 3 INCHES = ONE FOOT.

HOLES IN STERNPOST ABOVE COUNTER LINE $\frac{13}{16}$ SPACED AS SHOWN.
 —" —" —" —" BELOW —" —" —" $\frac{15}{16}$ " —" $\frac{1}{4}$ " APART, REELED.
 HOLES AT KEEL $\frac{13}{16}$ SPACED $\frac{3}{8}$ " APART, REELED
 HOLES IN RUDDER ARMS $\frac{15}{16}$ SPACED $\frac{5}{8}$ " $\frac{1}{4}$ " $\frac{1}{8}$ " APART, COUNTERSUNK.



DETAIL SKETCH OF BOTTOM PINTLE.

182-3.
2
H. J. O.

JULY 22ND 1908.

Rudder & Stern/race
Ferguson Bros.

182-3

See Later Plan

S.S. Heroine. X.

S.S. Flying Cormorant.

NEW

BUDDOM



© 2021

Lloyd's Register
Foundation

013403 - 013408 - 0055