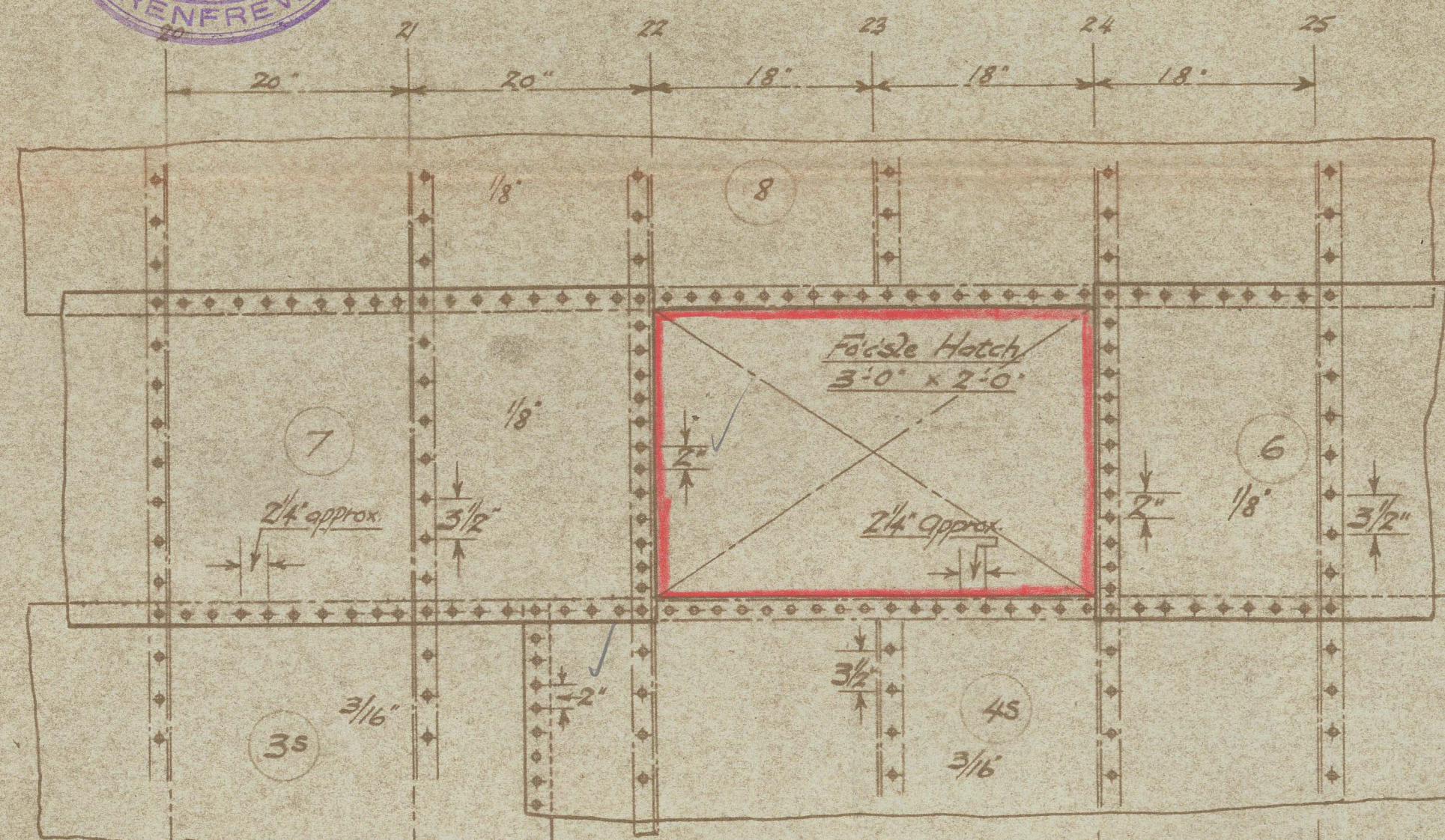


Nº3310. DRG. Nº3a.

# DECK PLATING & RIVET DETAILS.

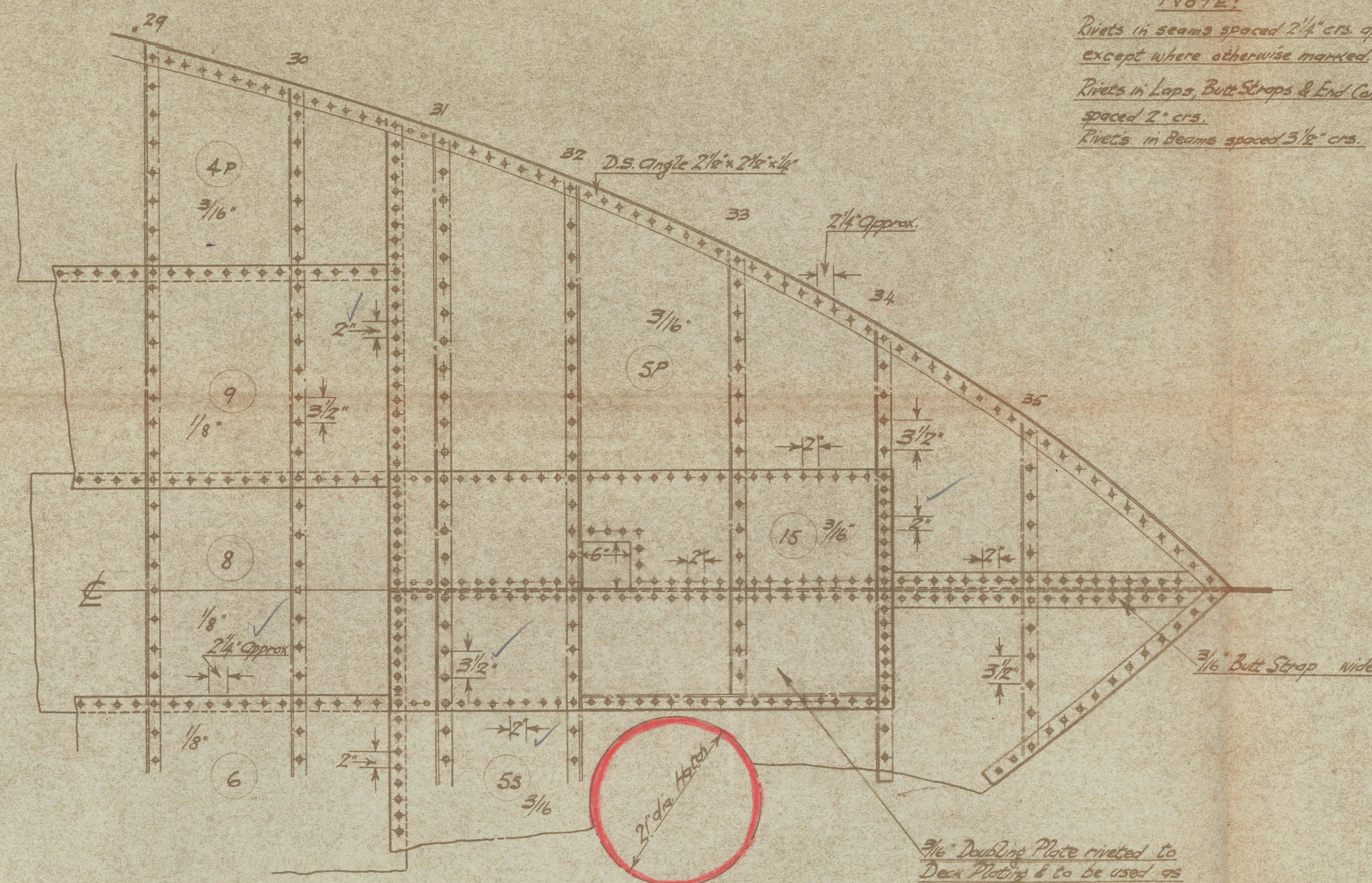
Scale's: 1/2 ins. & 1 ins. = 1 foot.



8 Rivets between  
Lap's for 20"  
spacing

Laps & Seams 2" Wide  
Rivets 1/2" dia.

7 Rivets between  
beams for 18" spacing



## NOTE!

Rivets in seams spaced 2 1/4" cts. approx.

except where otherwise marked.

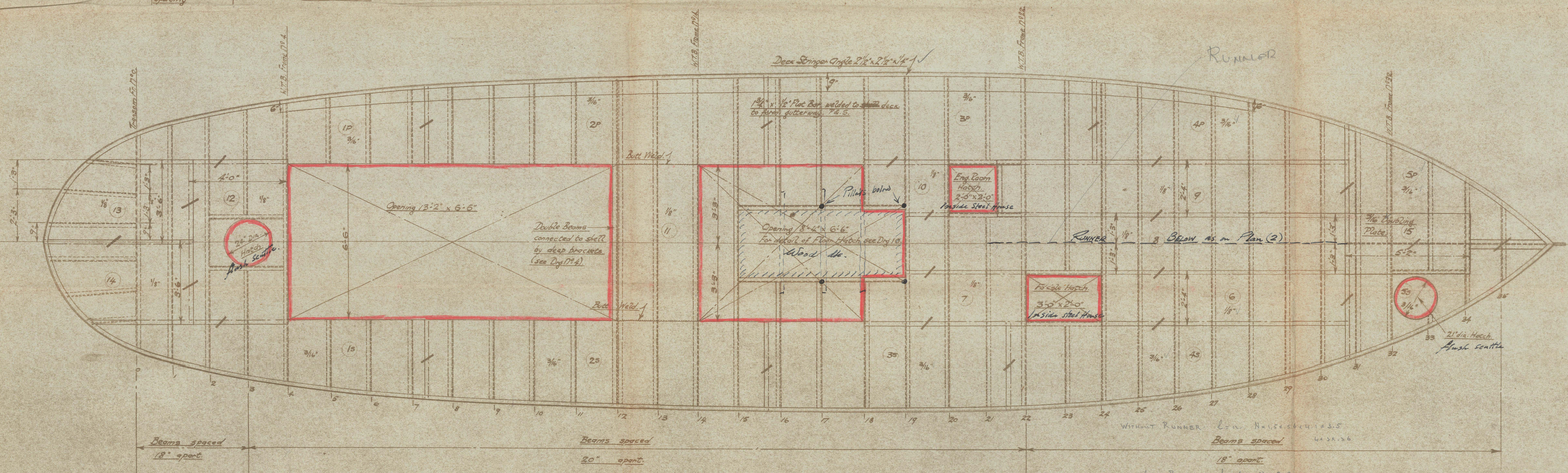
Rivets in Laps, Butt Straps & End Connections

spaced 2" cts.

Rivets in Beams spaced 3 1/2" cts.

Approved  
16/10/45  
(initials)

3/16" Doubling Plate riveted to  
Deck Plating & to be used as  
Butt Strap for plates 5P & 5S.



Beams spaced  
18" apart

Beams spaced  
20" apart

WITHOUT RUNNER L=11. N=5.5. S=11.1=3.5  
Beams spaced LxSxN

WITH RUNNER L=6. N=3.5  
SxLxN=20

013397-013402-0162



6

Deck Plating & Rivet Details  
Hugh McLean 3310.

23 OCT 1945

Deck Plating & Riveting

Hugh McLean & Sons

Nº 3310.

26.10.45.

THAMES PILOT

013397-013402-0162

BAC

0162



© 2021

Lloyd's Register  
Foundation