

SHIP Nos 344 & 5.

MIDSHIP SECTION.

SCALE: 1/2" = 1 FOOT.

Dim's - 370' 6" B.P. x 51' 0" BREADTH MLO. 26' 9" DEPTH MLO TO
CLASS B.S. * UPPER DK x 29' 6" MLO TO R.Q. DECK.

EQUIPMENT.

L x B x D x C	=	370 x 51 x 26' 9" x 75 = 3785
100.		100
RAISED QUARTER DECK	=	121' 4" x 51' x 2' 75" = 85
150		150
BRIDGE DECK	=	128' 25" x 51' x 8' 5" = 278
150		150
FORECASTLE DECK	=	36' 75" x 51' x 8' 5" = 79
150		150
POOP DECK	=	31' 67" x 40' x 7' 5" = 35
200		200
BRIDGE HOUSES AFT	=	38' 25" x 48' 3" x 7' 5" = 52
200		200
BRIDGE HOUSES FWD	=	23' 3" x 48' 3" x 7' 5" = 31
200		200
E & B. CASINGS	=	24' 75" x 20' x 7' 5" = 13
200		200
CAPTAINS ROOM	=	19' x 15' x 7' 5" = 8
200		200
NAVIGATING BRIDGE	=	23' 5" x 9' x 7' 5" = 5
200		200
STEERING GEAR HOUSE	=	19' x 16' x 7' 5" = 7
200		200
EQUIPMENT NUMBER	=	4378

- 2 BOWER ANCHORS STOCKLESS
1 BOWER ANCHOR STOCKLESS
1 STREAM ANCHOR COMMON
270 FATHOMS 2 1/2" DIA STUD CHAIN CABLE
90 FATHOMS 1/4" CIRC STEAM WIRE
120 FATHOMS 1/2" STEEL WIRE TOWLINE
2-90 FATHOMS 2 1/2" WIRE HAWSER
2-90 FATHOMS 2 1/2" WIRE HAWSER

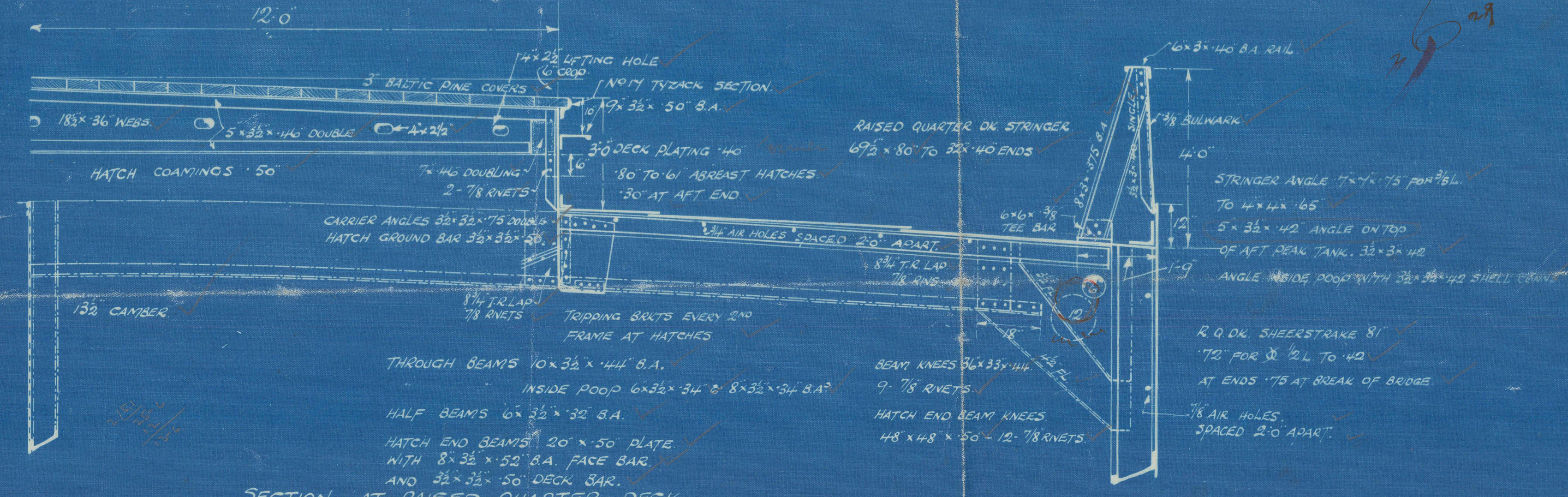
- MANILA HAWSERS TO OWNERS SPECIFICATION.
2 @ 90 FATHOMS 3" CIRC.
2 @ 90 FATHOMS 7" CIRC.
2 @ 90 FATHOMS 2 1/2" CIRC.
1 COIL HEAVING LINE.

RIVETING LIST.

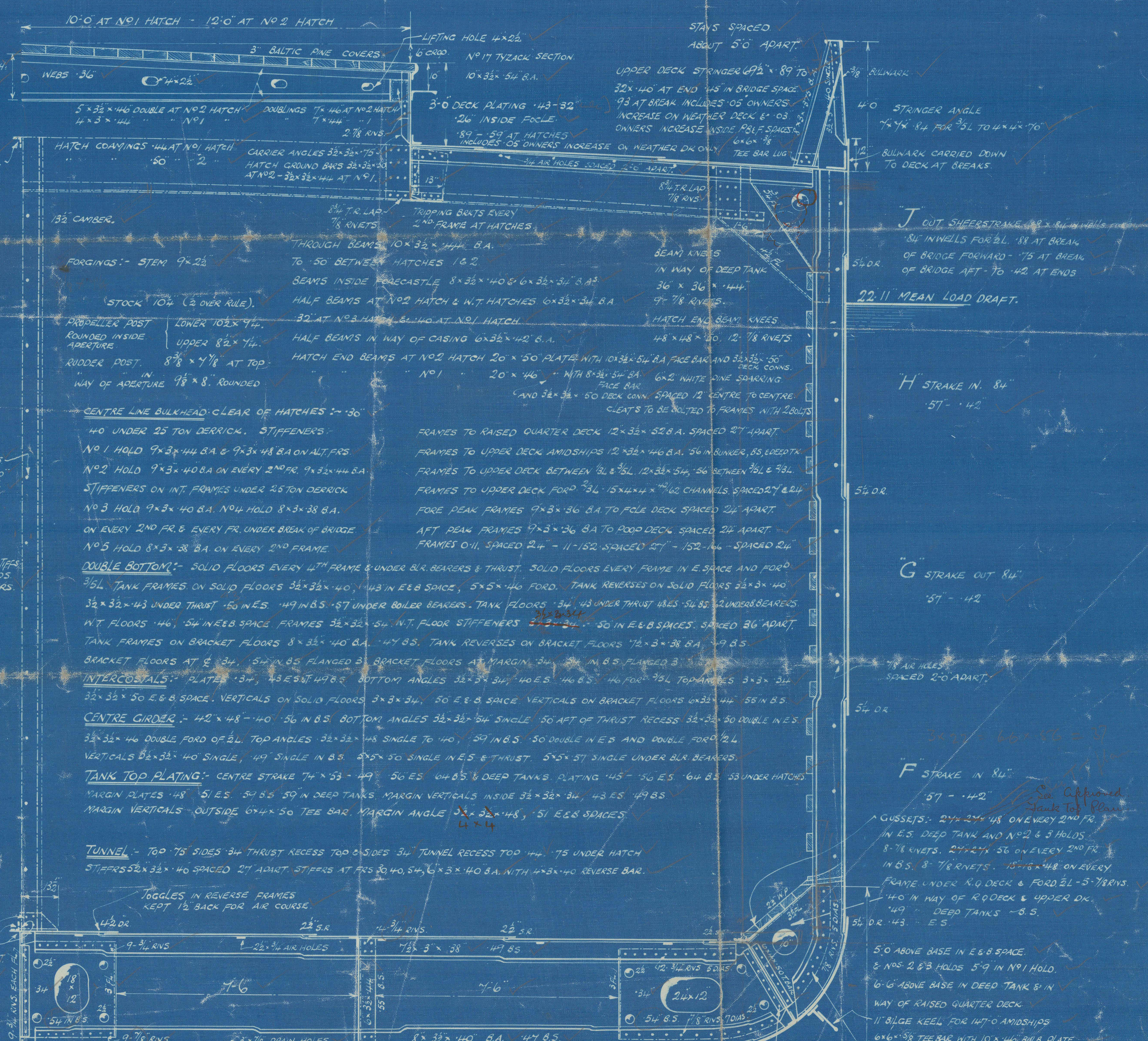
- BUTTS OF PLAT KEEL PLATES STAGGERED & TREBLE RIVETED THROUGHOUT.
CENTRE GIRDERS OVERLAPPED & TREBLE RIVETED TO DOUBLE.
TANK TOP CENTRE STOWS OVERLAPPED & TREBLE RIVETED TO DOUBLE.
PLAYING OVERLAPPED & DOUBLE RIVETED THROUGHOUT.
MARGIN PLATES OVERLAPPED & TREBLE RIVETED TO DOUBLE.
SEAMS OF TANK TOP CENTRE STRAKE DOUBLE RIVETED WITHIN 1/4" TO SINGLE ELSEWHERE.
PLAYING & MARGIN SINGLE RIVETED THROUGHOUT.
BUTTS OF SHELL PLATING OVERLAPPED & TREBLE RIVETED FOR 1/4" TO DOUBLE.
SHEERSTRAKE IN WAY OF BREAKS: QUINQUE RIVETED.
UPPER DECK SHEERSTRAKE QUINQUE RIVETED FOR 1/4" TO TREBLE & DOUBLE.
R.Q. DECK SHEERSTRAKE QUINQUE RIVETED FOR 1/4" TO TREBLE & DOUBLE.
UPPER DECK STRINGERS QUINQUE RIVETED IN WELLS FOR 1/4" TO TREBLE BETWEEN 1/4" & 1/4".
AND PLATING TREBLE TO DOUBLE FOR 1/4" TO DOUBLE INSIDE BRIDGE.
R. QUARTER DECK STRINGER QUAD. RIVETED FOR 1/4" TO TREBLE BETWEEN 1/4" & 1/4".
TREBLE TO DOUBLE AT END.
PLAYING QUAD RIVETED FOR 1/4" TO QUAD TO TREBLE BETWEEN 1/4" & 1/4".
TREBLE TO DOUBLE AT ENDS.
BRIDGE DECK STRINGER OVERLAPPED & TREBLE RIVETED OVERLAPS.
PLAYING TO DOUBLE.
SEAMS OF UPPER DECK PLATING SINGLE RIVETED.
RAISED QUARTER DECK PLATING SINGLE RIVETED.
BRIDGE DECK PLATING SINGLE RIVETED.
SEAMS & BUTTS OF POOP DECK PLATE SINGLE RIVETED.



SECTION THRO' ENGINE SPACE.



SECTION AT RAISED QUARTER DECK.



SECTION IN WELL.



(28)

5

Midship Section
Ardrossan Dkd. Ltd.

N^{os} 344-5.

2-1-29.

344. "Blairspire" *

345. Blairnevis

370'



© 2021

Lloyd's Register

013390 013396 0040
Foundation

~~Midship Section~~

~~Cardrossan 344/5~~

Bag



© 2021

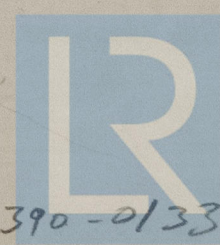
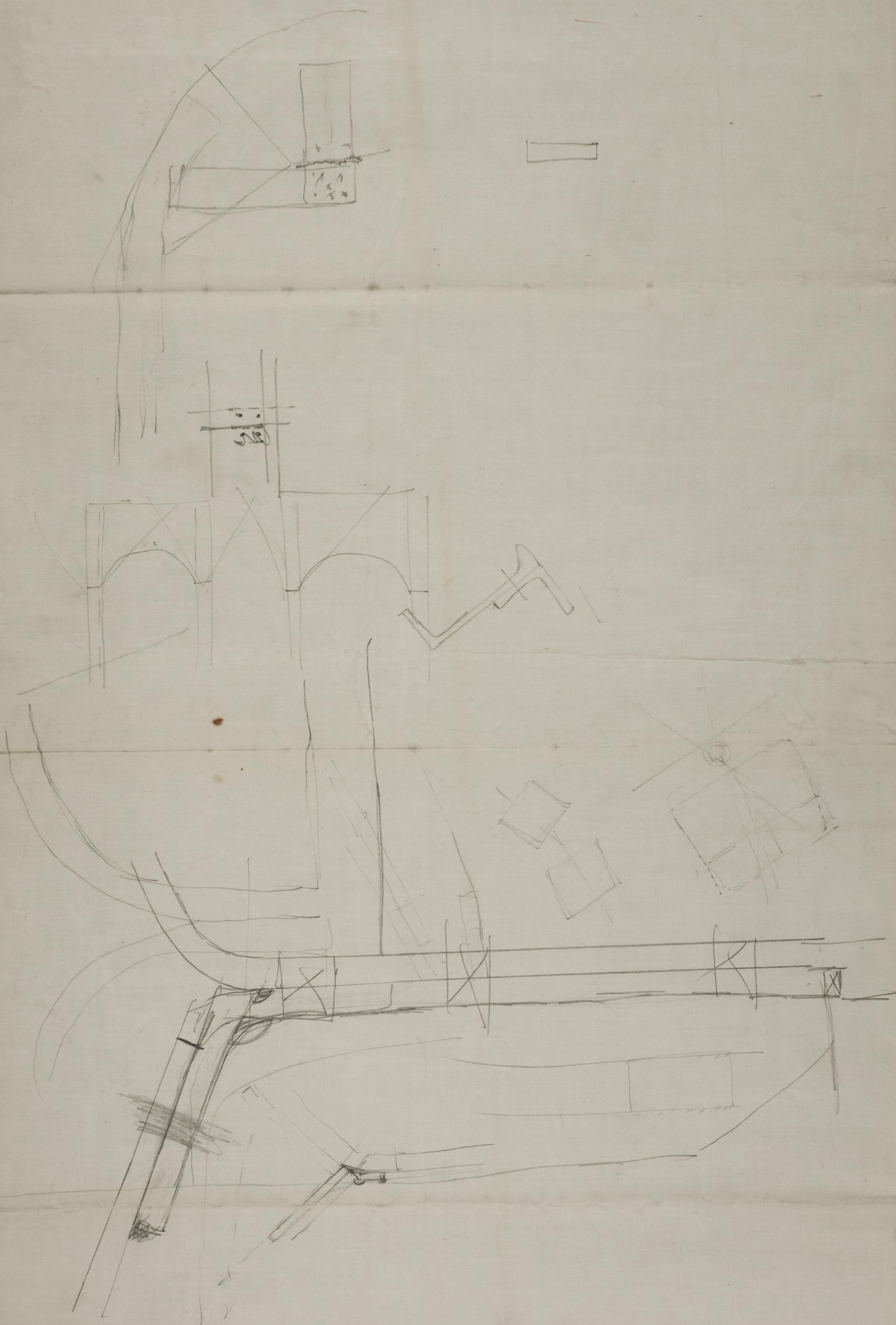
Lloyd's Register
Foundation

013390-013396-0040

013390-013396-0040

8

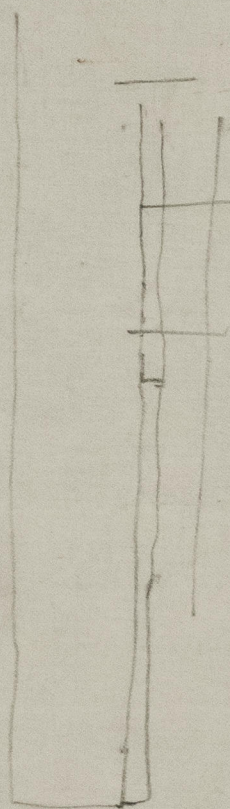
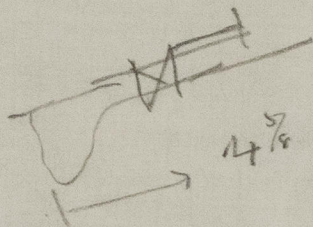
013390-013396



© 2021

Lloyd's Register

013390-013396 Foundation



Handwritten mark or signature.

