

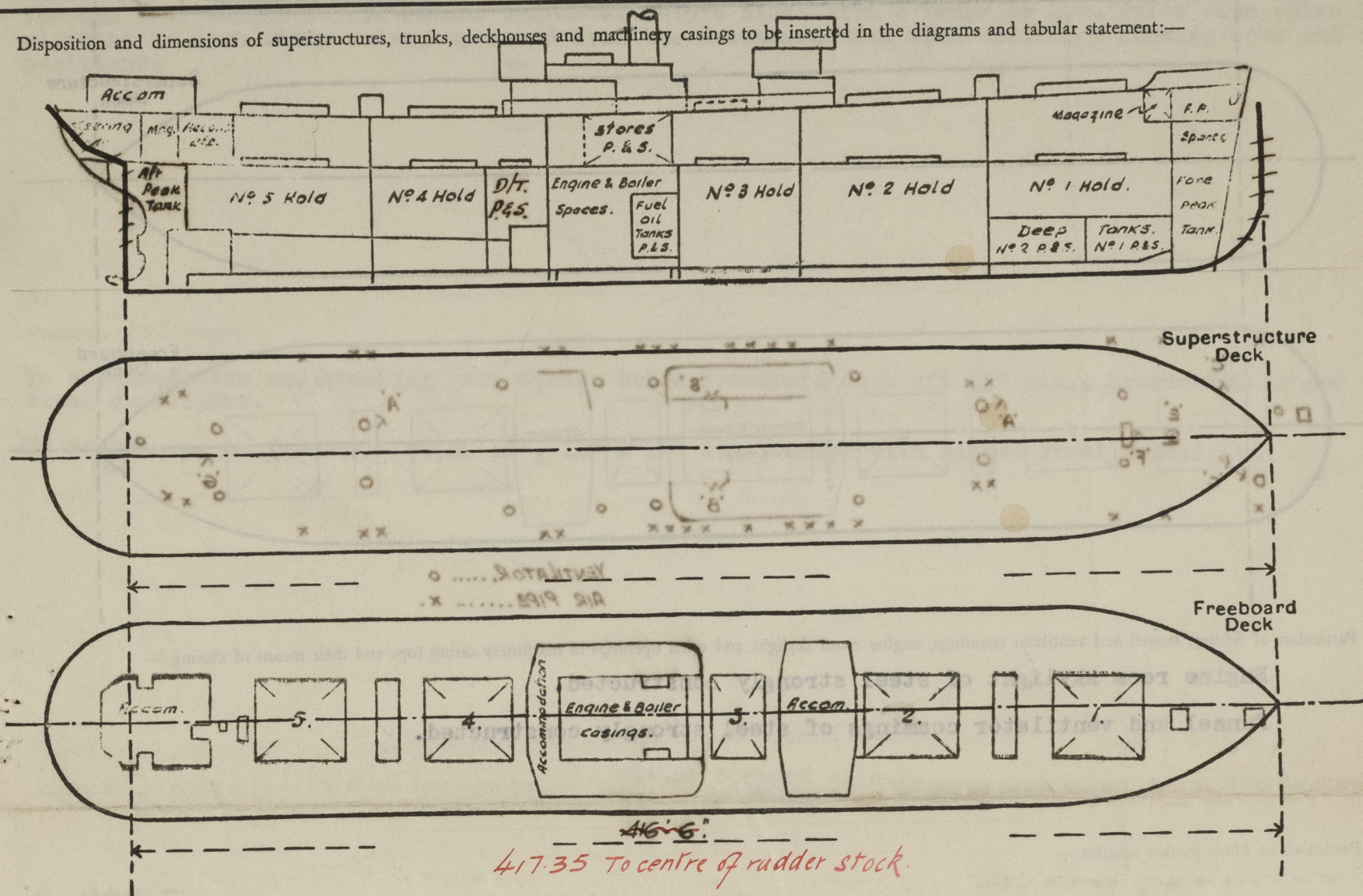
# Lloyd's Register of Shipping.

## SURVEYS FOR FREEBOARD.

(CONDITIONS OF ASSIGNMENT.)

Ship's Name S.S. "PORT ASTORIA" <sup>MOUNT PHEMB</sup> ~~SANTA DESO~~ Port of Survey Vancouver, B. C.  
 Official Number -- Surveyor's Signature [Signature]  
 Nationality and Port of Registry British Date of Survey July, 1943.

Disposition and dimensions of superstructures, trunks, deckhouses and machinery casings to be inserted in the diagrams and tabular statement:—



Particulars of Superstructures, Trunks, Casings, Deckhouses.

	Coaming	Plating	Stiffeners	Spacing	End Attachments of Stiffeners	Size of Openings	Height of Sills	Height of Casings
Poop Bulkhead ...	X							
Raised Quarter Deck Bulkhead ...	X							
Bridge, After Bulkhead ...	X							
Bridge, Forward Bulkhead ...	X							
Forecastle Bulkhead ...	X							
Trunk, Aft ...	X							
Trunk, Forward Mast Houses.	$\frac{3}{8}$	$\frac{3}{8}$	5"x3"x $\frac{3}{8}$ "		Bracketed	5' x 2'	18"	7' - 6"
Exposed Machinery Casings on Freeboard or Raised Quarter Decks ...	11/32 - $\frac{3}{8}$	$\frac{1}{4}$ - $\frac{3}{8}$	3"x3"x5/16"	24"	Bracketed at Top	5' x 2' and 5' x 3'-6"	24"	7' - 9"
Exposed Machinery Casings on Superstructure Decks ...	X							
Machinery Casings within Superstructures not fitted with Class I Closing Appliances ...	X							
Deckhouses on Flush Deck Ships ...	5/16"	5/16"	3"x3"x5/16"	30" - 42"	Bkts. Top & Btm.	See Companionways		

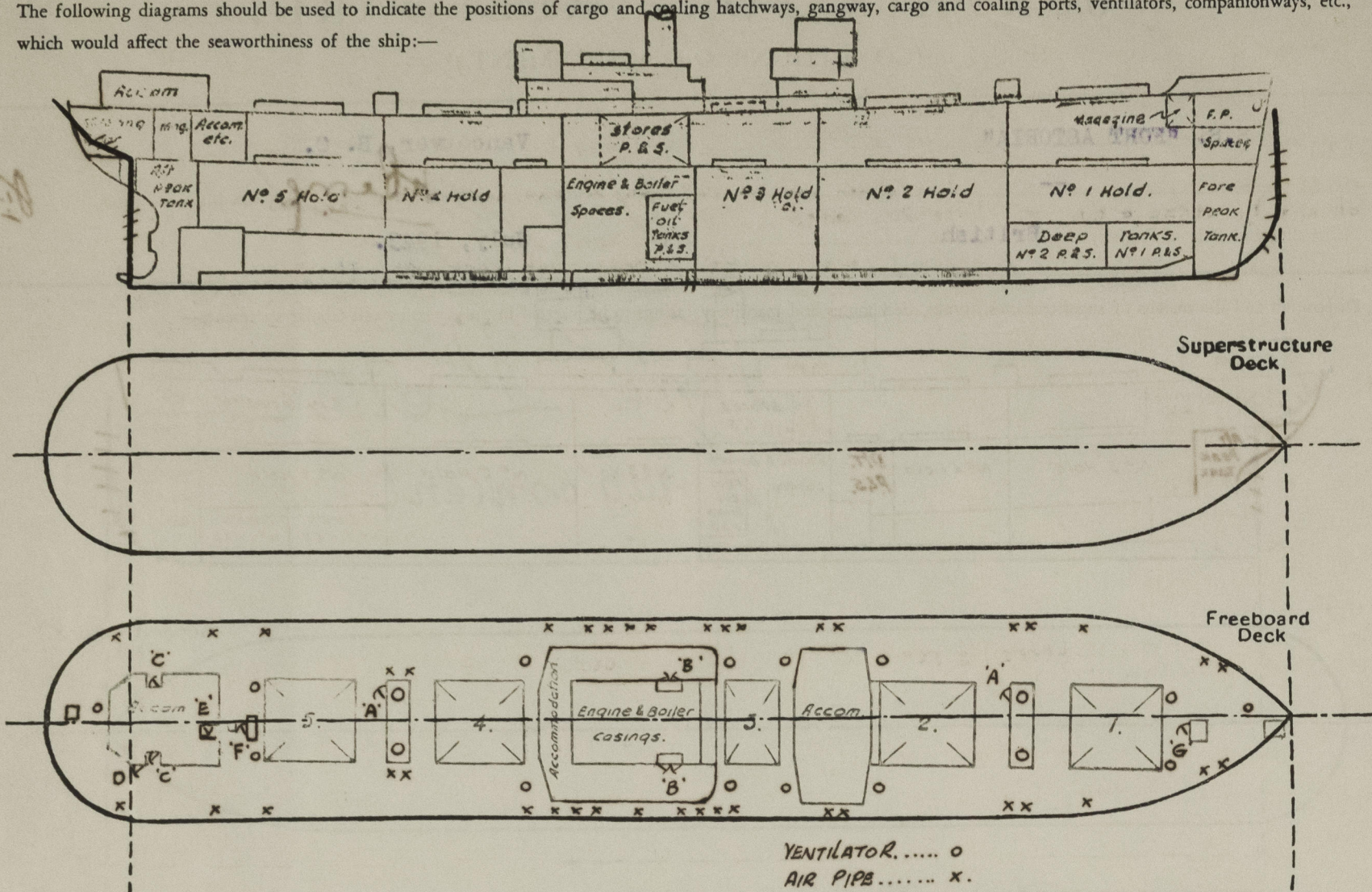
Particulars of Closing Appliances (state if capable of being manipulated from both sides).

Poop Bulkhead ...	X
Raised Quarter Deck Bulkhead ...	X
Bridge, After Bulkhead ...	X
Bridge, Forward Bulkhead ...	X
Forecastle Bulkhead Mast House	Hinged steel W.T. doors operated from both sides.
Exposed Machinery Casings on Freeboard or Raised Quarter Decks ...	Hinged steel doors operated from both sides.
Exposed Machinery Casings on Superstructure Decks ...	X
Machinery Casings within Superstructures not fitted with Class I Closing Appliances ...	X
Deckhouses on Flush Deck Ships ...	Hinged steel and wood doors operated from both sides.



# PARTICULARS OF PROTECTION TO OPENINGS, ETC.

The following diagrams should be used to indicate the positions of cargo and coaling hatchways, gangway, cargo and coaling ports, ventilators, companionways, etc., which would affect the seaworthiness of the ship:—



Particulars of fiddle, funnel and ventilator coamings, engine room skylight and other openings in machinery casing tops and their means of closing:—

Engine room skylight of steel strongly constructed. ✓

Funnel and ventilator coamings of steel strongly constructed. ✓

Particulars of Flush Bunker Scuttles:—

None ✓

"A" - 5' x 2' cmg., 18" with hinged steel W.T. door to hold escape in mast house. ✓

Particulars of Companionways:—

"B" - 4'-3" x 3'-6" cmg., 24" with double steel hinged doors to stores. ✓  
 "C" - 4'-9" x 3'-6" cmg., 24" with hinged solid wood door in aft deck house to crew spaces. ✓  
 "D" - 4'-11" x 2'-2" cmg., 24" with hinged steel door to steering gear space. ✓  
 "E" - 4'-9" x 2'-0" cmg., 24" with hinged steel W.T. door to tunnel escape trunk. ✓  
 "F" - 4'-0" x 1'-10" cmg., 24" with hinged solid wood door to steel companionway. ✓  
 "G" - 4'-10-1/2" x 1'-10-1/2" cmg., 24" with hinged steel W.T. door to forward magazine. ✓

Particulars of Ventilators in exposed positions on freeboard and superstructure decks:—

4 - 36" dia., 24" x 7/16" coaming to cargo spaces on mast houses. ✓  
 6 - 24" dia., 36" x 7/16" coaming to cargo spaces. ✓  
 4 - 18" dia., 36" x 7/16" coaming to cargo spaces. ✓  
 2 - 18" dia., 10'-6" x 7/16" coaming to cargo spaces stayed to house. ✓  
 5 - 12" dia., 36" x 3/8" coaming to cargo spaces and magazines. ✓  
 2 - 10" dia., 36" x .36" coaming to store spaces and steering gear. ✓  
 3 - 6" dia., 36" x .42" coaming to aft accommodation. ✓  
 1 - 8" dia., 36" x .32" coaming to aft accommodation. ✓  
 2 - 6" dia., gooseneck, 30" to opening to magazines. ✓  
 3 - 12" x 4" gooseneck, 36" to opening to store spaces. ✓

(All ventilators fitted with wood plugs and canvas covers. Gooseneck type ventilators fitted with wood plugs. ✓)

Particulars of Air Pipes in exposed positions on freeboard, raised quarter, or superstructure decks:—  
 To peaks and double bottom tanks, 3'-1/2", 3", 2'-1/2" & 1'-1/2" opening 30" above deck, fitted with "VAREC" automatic sea check valves at openings, with double wire gauze. ✓  
 O.F. settling tanks 1 - 6" dia., & 1 - 4" dia., opening 30" above deck. ✓  
 Deep tanks 6 - 5" dia., opening 30" above deck. ✓  
 F.W. tanks amidships, 2 - 2'-1/2" dia., opening 30" above deck. ✓  
 Rudder trunk 1 - 2'-1/2" dia., opening 30" above deck. ✓  
 W.C.'s in crew's spaces aft, 2 - 1'-1/2" dia., opening 30" above deck. ✓

All air pipes to deep tanks and settling tanks, fitted with double wire gauzes, all others with wood plugs. ✓

Particulars of Gangway Cargo and Coaling Ports:—

None ✓

Particulars of Scuppers and Sanitary Discharge Pipes:—

Sanitary discharges from spaces above freeboard deck fitted with C.S. automatic non-return valves at ship's sides situated above 2nd deck. ✓

Sanitary and scupper discharges from spaces below freeboard deck aft, discharge below the 2nd deck, through C.S. automatic non-return valves at ship's sides with a brass or C.S. screw down valve fitted adjacent to each storm valve, operated from the freeboard deck with indicator showing open and closed positions. ✓

Particulars of Side Scuttles:—

To accommodation and steering gear spaces below freeboard deck aft 10" dia., brass with hinged steel deadlights. ✓

To deckhouses on freeboard deck, 16", 12" & 10" dia., brass with hinged steel deadlights. ✓

Vertical distance of Sill of lowest Side Scuttle above top of keel 91'-2" forward of A.P. ✓  
 35' - 3" above top of keel.

Particulars of Guard Rails:—

Steel bulwarks, efficiently stayed, fitted on freeboard deck at fore end and abreast midship deckhouses. Elsewhere, steel stanchions 3'-6" in height, spaced about 5' apart, with 3 rails. ✓

Particulars of Gangways, Lifelines, etc:—

From fore peak hatch to midship deckhouse, midship deckhouse to engineer's house and to after deckhouse, port and starboard. ✓

Particulars of Freeing Arrangements.						
	Length of Bulwark	Height of Bulwark	Size of Freeing Ports	Number each side	Area each side	Rule area each side
Amidships	129'-9"	3'-6-3/4"	3'-0" x 9"	4	9 sq. ft.	x
Forward Well						
State position of each freeing port ... { After Well:— Amidships ✓						
(F. and A. position and height above deck edge) { Forward Well:— 9'-1/2" above deck edge. ✓						
State whether the freeing ports are fitted with shutters, bars, or rails, and give particulars of such:— None ✓						
Additional area where sheer is less than standard.						



# PARTICULARS OF PROTECTION TO OPENINGS, ETC.

HATCHWAYS ON FREEBOARD AND SUPERSTRUCTURE DECKS.										
Description of Hatchway	1	2	3	4	5	Fore Peak	S.G. Space			
Dimensions of Hatchway	33'9"x20'	35'x20'	20'x20'	35'x20'	35'x20'	3'6"x2'6"	2'0"x1'9"			
COAMINGS	<div> <div>Height above Deck</div> <div>Thickness</div> <div>Stiffeners</div> <div>Brackets</div> <div>Stays</div> </div> <div> <div>Sides</div> <div>Ends</div> </div> <div> <div>BA</div> <div>S3 E2</div> <div>S3 E1</div> <div>S1 E1</div> <div>S3 E1</div> <div>S3 E2</div> </div> <div> <div>7x3 1/2 x 32</div> <div>9x3 1/2 x 44</div> <div>7x3 1/2 x 32</div> <div>9x3 1/2 x 44</div> <div>7x3 1/2 x 32</div> </div> <div> <div>6"x4"OA</div> </div> <div> <div>36"</div> <div>7/16</div> <div>7/16</div> </div> <div> <div>24"</div> <div>3/8</div> <div>3/8</div> </div> <div> <div>24"</div> <div>3/8</div> <div>3/8</div> </div> <div> <div>(S - Sides E - Ends)</div> </div>									
HATCH BEAMS	<div> <div>Number</div> <div>Spacing</div> <div>Scantling and Sketch</div> <div>Bearing Surface</div> </div> <div> <div>5</div> <div>67 1/2"</div> <div>70"</div> <div>60"</div> <div>70"</div> <div>70"</div> </div> <div> <div>18 1/2" x 3/8" WEB</div> <div>5x3x3/8 Angles (5"Horl)</div> <div>3"</div> </div>									
FORE AND AFTERS	<div> <div>Number</div> <div>Spacing</div> <div>Unsupported Lengths</div> <div>Scantling and Sketch</div> <div>Bearing Surface</div> </div>									
HATCH COVERS	<div> <div>Material</div> <div>Thickness</div> <div>How fitted</div> <div>Bearing Surface</div> </div> <div> <div>BC Fir</div> <div>2-7/8</div> <div>Fore and Aft</div> <div>3"</div> </div> <div> <div>Steel 3/8"</div> <div>Steel 3/8"</div> <div>Water Tight</div> <div>Water Tight</div> </div>									
Spacing of Cleats						24"	Toggles	Toggles		
Number of Tarpaulins						2				
<p>*Are wood fore and afters steel shod at all bearing surfaces? <b>None</b></p> <p>Are battens and wedges efficient and in good condition? <b>Yes</b></p> <p>Are tarpaulins in good condition and in accordance with rule requirements? <b>Yes</b></p> <p>Are lashings provided in accordance with rule requirements? <b>Yes</b></p>										

Particulars of any special features:—

This ship is of the closed shelter deck type, the tonnage opening abaft No.5 hatchway, being closed by a riveted plate.

Skylight of steel to crew's space aft, 3'-6" x 2'-7" coaming 18" high x .25" with steel hinging weathertight covers.

Endorsement at first survey and at surveys for renewal of Certificate:—

The fittings and appliances are in accordance with the particulars shown on this form (or as now modified) and are in good condition.



© 2021

Lloyd's Register Foundation