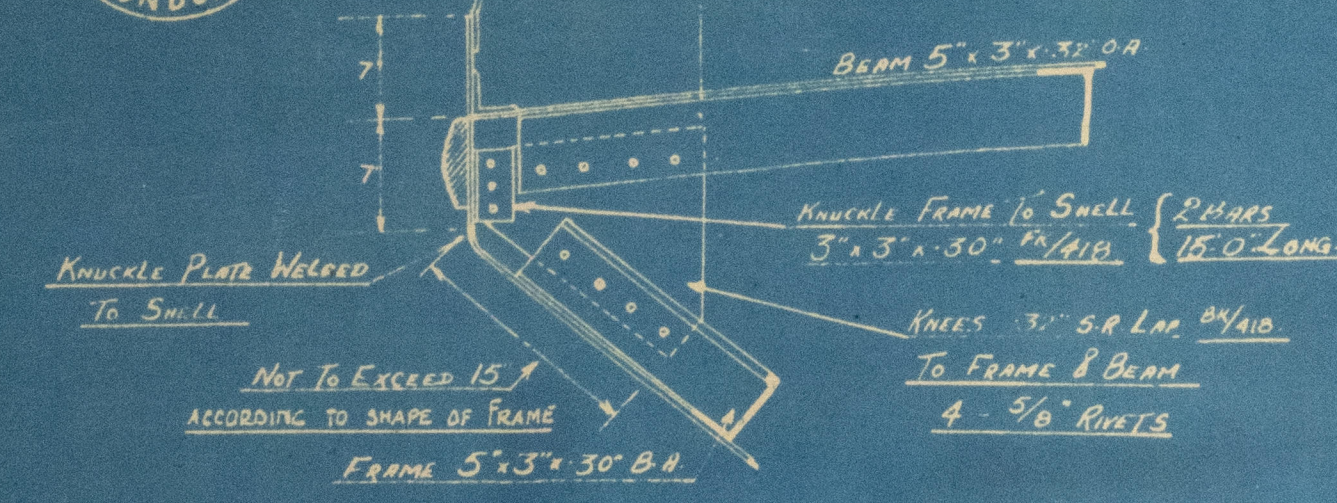
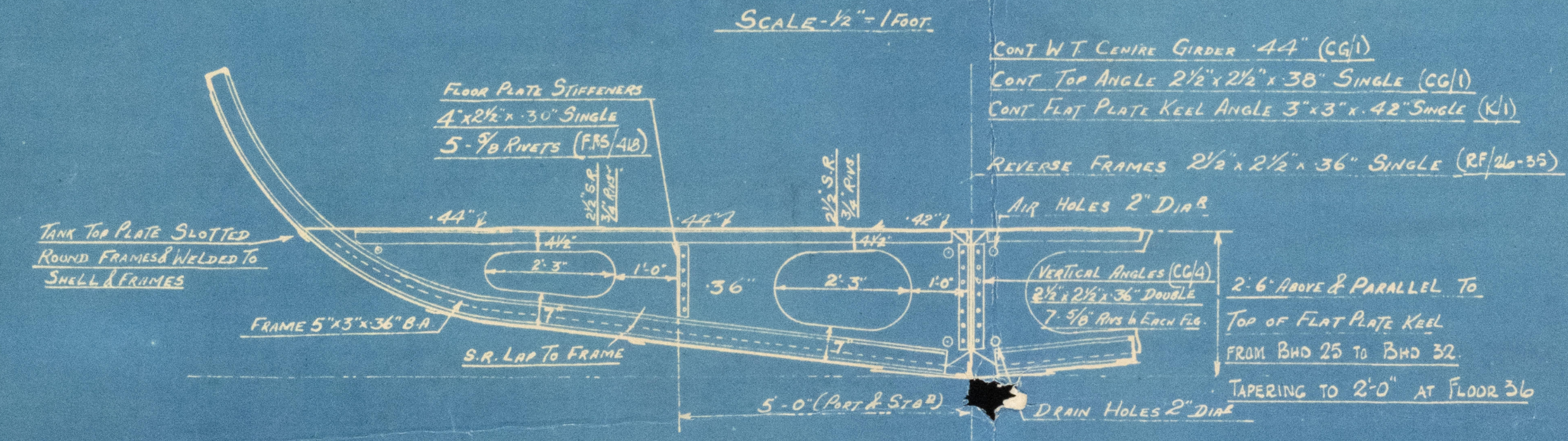


LONDON SHIPB. 18th March 1941

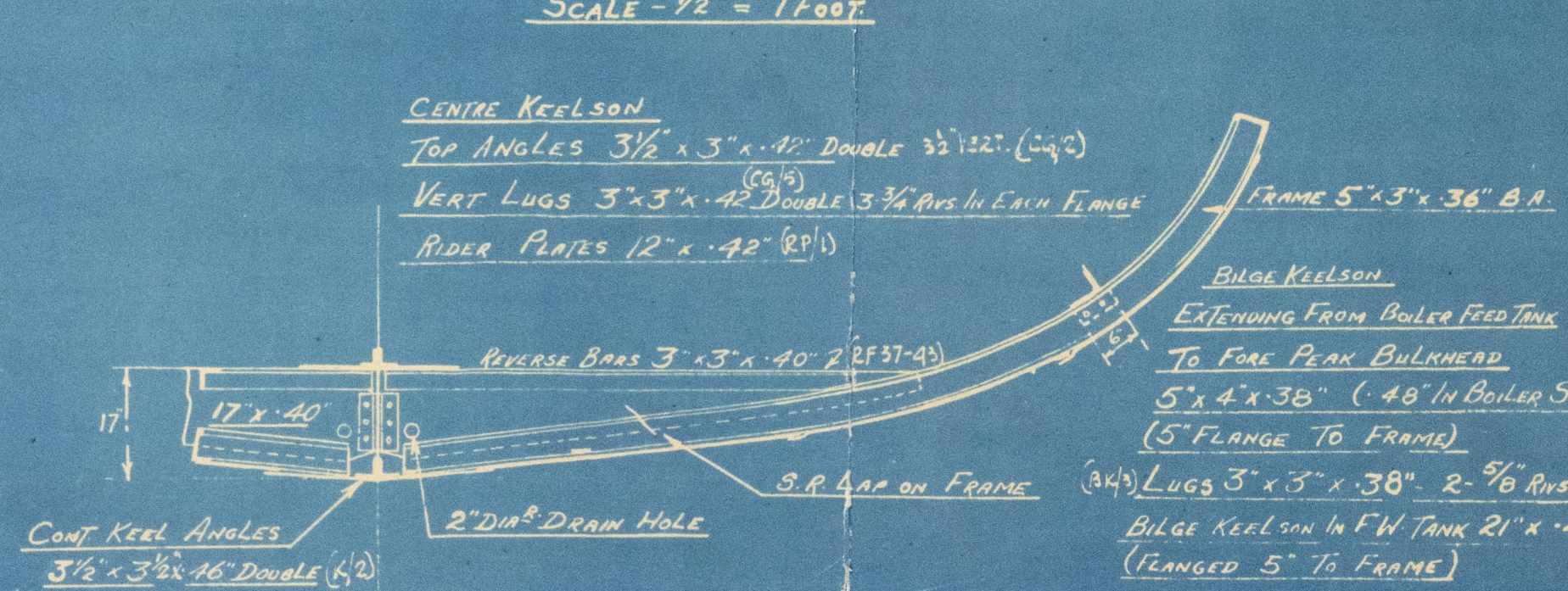
DETAIL OF BEAM KNEES AT KNUCKLE FRAMES 0-13-52-53-54 SCALE: 1" = 1 FOOT



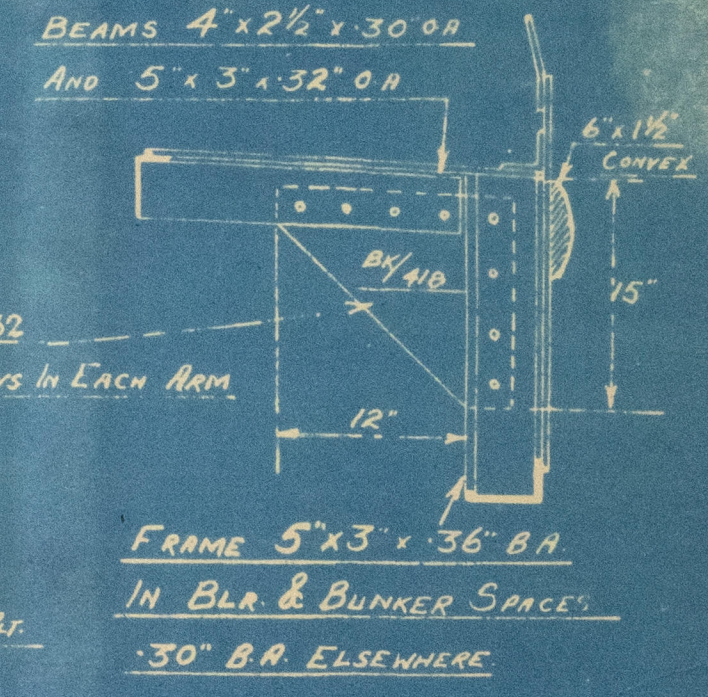
BOILER FEED TANK FLOORS FRAMES 26-35 SCALE: 1/2" = 1 FOOT



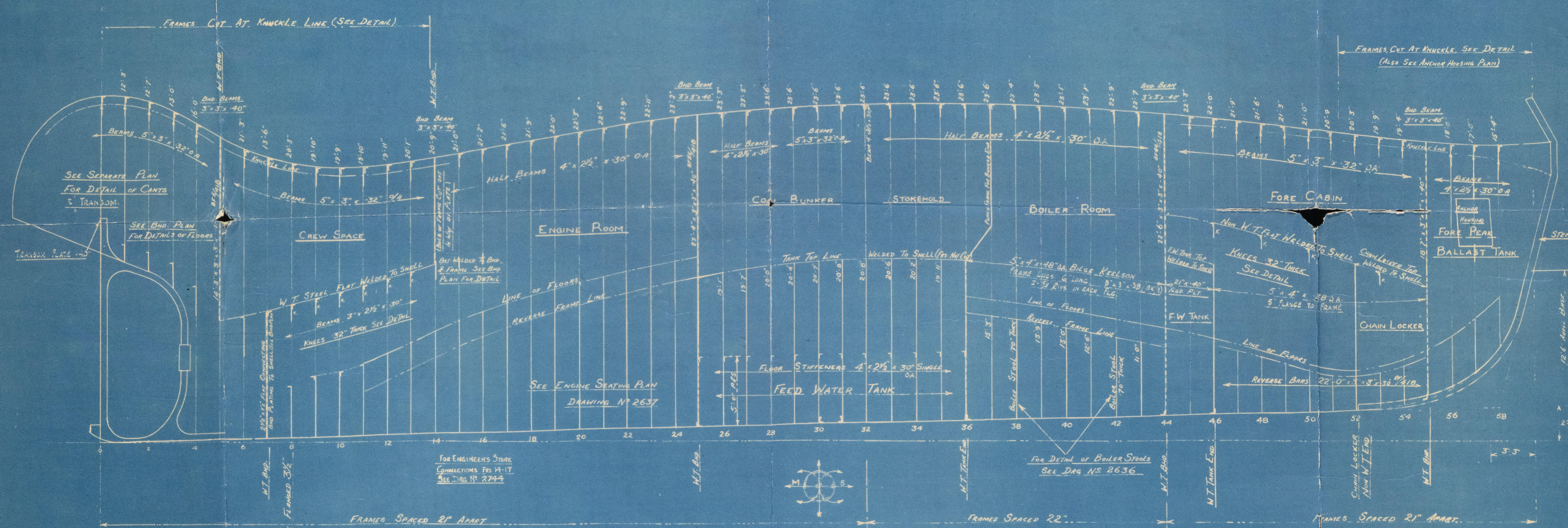
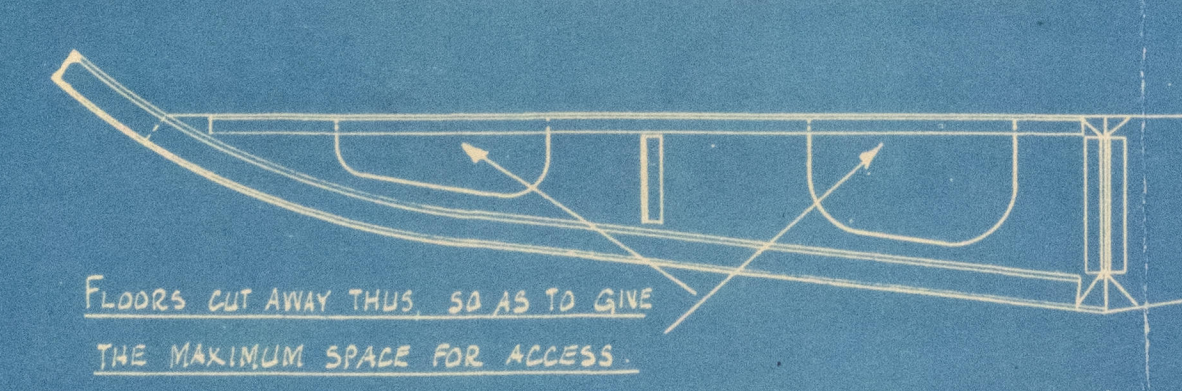
BOILER SPACE FLOORS FRAMES 37-43 (EXCEPT 38 & 42 BOILER STOODS) SCALE: 1/2" = 1 FOOT



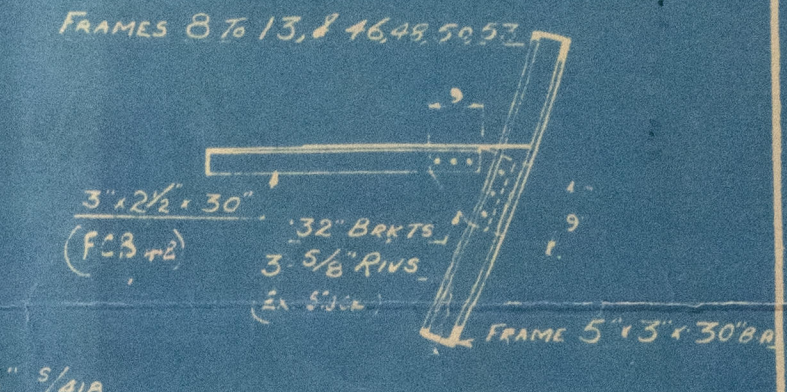
DETAIL OF BEAM KNEES CLEAR OF KNUCKLE SCALE: 1" = 1 FOOT



OUTLINE OF FLOORS 34 & 35



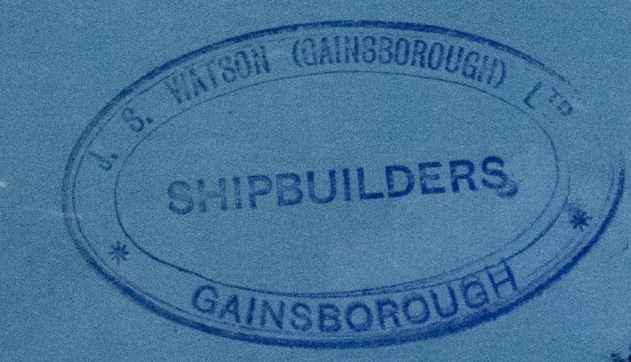
DETAIL OF CABIN FLOOR BEAM KNEES



BEAM	KNEES	W.T. STIFFENERS	W.T. STIFFENERS
1	10' 9"	12'	30' 1/2"
2	6' 6"	18'	31'
3	7' 6"	15'	14' 1/2"
4	8' 3"	15'	14' 1/2"
5	10' 3"	20'	19' 1/2"
6	6' 0"	10'	9' 1/2"

RIVETING LIST

ITEM	DIA.	SPACED	CR. TO CR.
FRAMES TO SHELL IN PLANS	5/8	5 1/2 DIA	3 1/2"
" " " " " "	3/8	7	4 1/2"
" " " " " "	5/8	5 1/2	3 1/2"
" " " " " "	3/8	5	3 1/2"
" " " " " "	7/8	5 1/2	4 1/2"
" " " " " "	3/4	7	5 1/4"
" " " " " "	5/8	7	4 1/2"
W.T. BHD. FRAMES TO SHELL	3/8	5	3 1/2"
" " " " " "	5/8	4 1/2	2 1/4"



RICHARD DUNSTON LTD.
SHIPBUILDERS,
THORNE, YORKSHIRE

DRAWN BY	DATE 26-9-40	
TRACED BY	DATE	
CHECKED BY	DATE 1-1-41	
REVISIONS		
NO.	DATE	PARTICULARS
1	30.9.44	APPROVED BY LLOYD'S
2	10.2.41	BROUGHT UP-TO-DATE.

Also SHIP No. S 420-1-2

This Drawing and the Information it contains are the Property of RICHARD DUNSTON LTD. It is not to be Traced, Copied or Published without their Written Consent, nor is the Information thereon to be misused in any way.

YARD No. S 418/19 DRG. No. 2655

TITLE: **-FRAMING PROFILE-**
SCALE: 1/4" = 1' TO ONE FOOT

013339-013345-0170

(5)

J. L. Watson (Geo) Lr

Gainsborough

Yard no 1528

Yard no 1533/4

... - 1545/6

Framing Profile

Empire Lucy *

10

(5)

J. L. Watson (Gho) Lr

Gainsborough

Yard no 1528

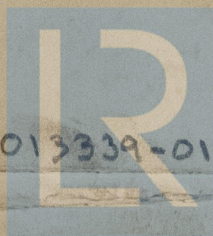
Yard no 1533/4

... - 1545/6

Framing Profile

Empire Lucy *

(10)



© 2021

Lloyd's Register
Foundation