

88

Apr 20 1914
Superintendent
Gordon Campbell

No 494 STERN FRAME & RUDDER.

Scale - 1/2" = 1 foot.

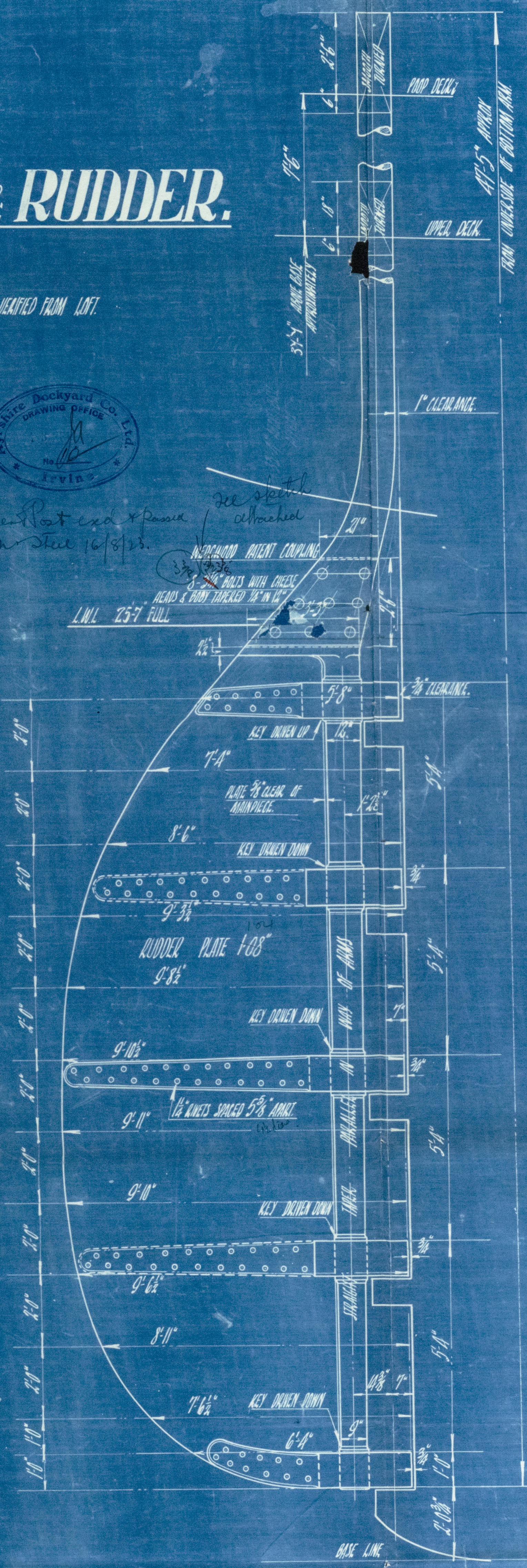
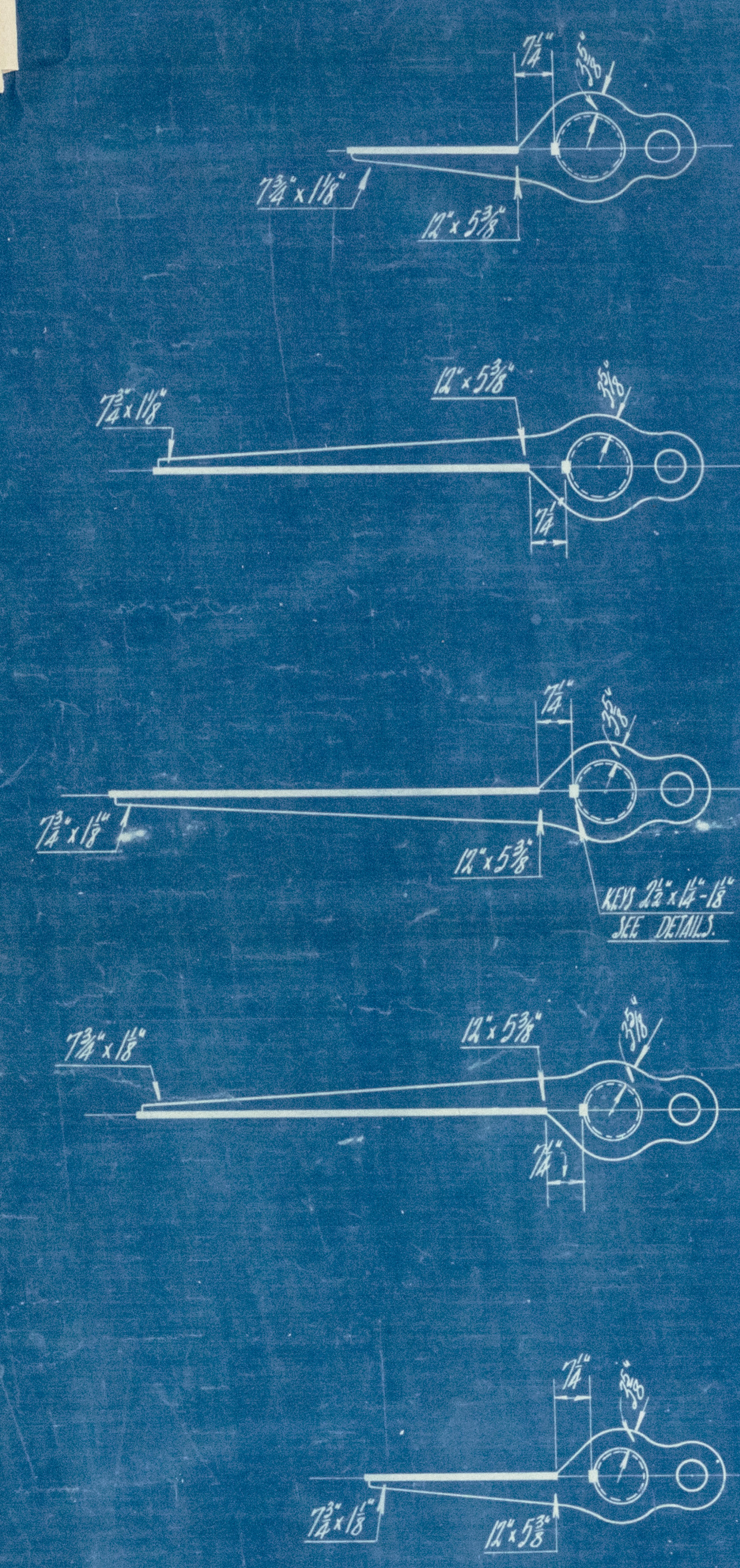
DETAILS AS INDICATED.

NOTE: ALL HEIGHTS TO BE MEASURED FROM LIFT

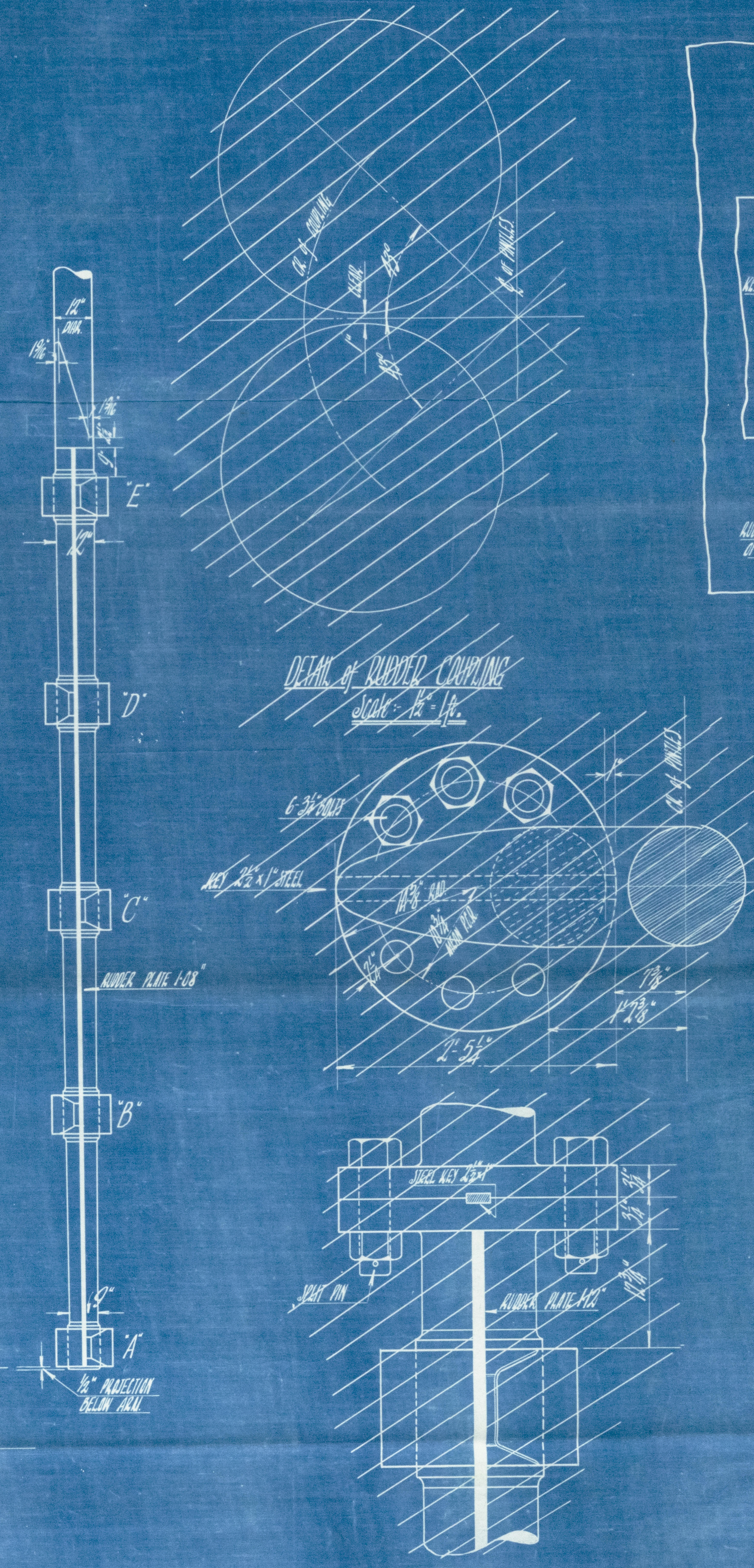
STERN & RUDDER FRAMES TO PASS B.C. TESTS FOR B.S. *
FRAMES TO BE AT RIGHT ANGLES TO CRANK OF PIVOTS, BONED
OUT ACCURATELY AND CAREFULLY SHOWN ON MAINPIECE.
MAINPIECE SHELLS 5/8" IN WAY OF HORN.
RUDDER STOCK OF BEST FORGED SCRAP IRON, SMOOTH TURNED WHERE
INDICATED AND ALSO WHERE HANDS ARE SHOWN ON
STERNPOST OF BEST FORGED SCRAP IRON.
PIVOT HOLES IN STERNPOST KEPT CLEAR OF EDGES OF PLATE LANDINGS.



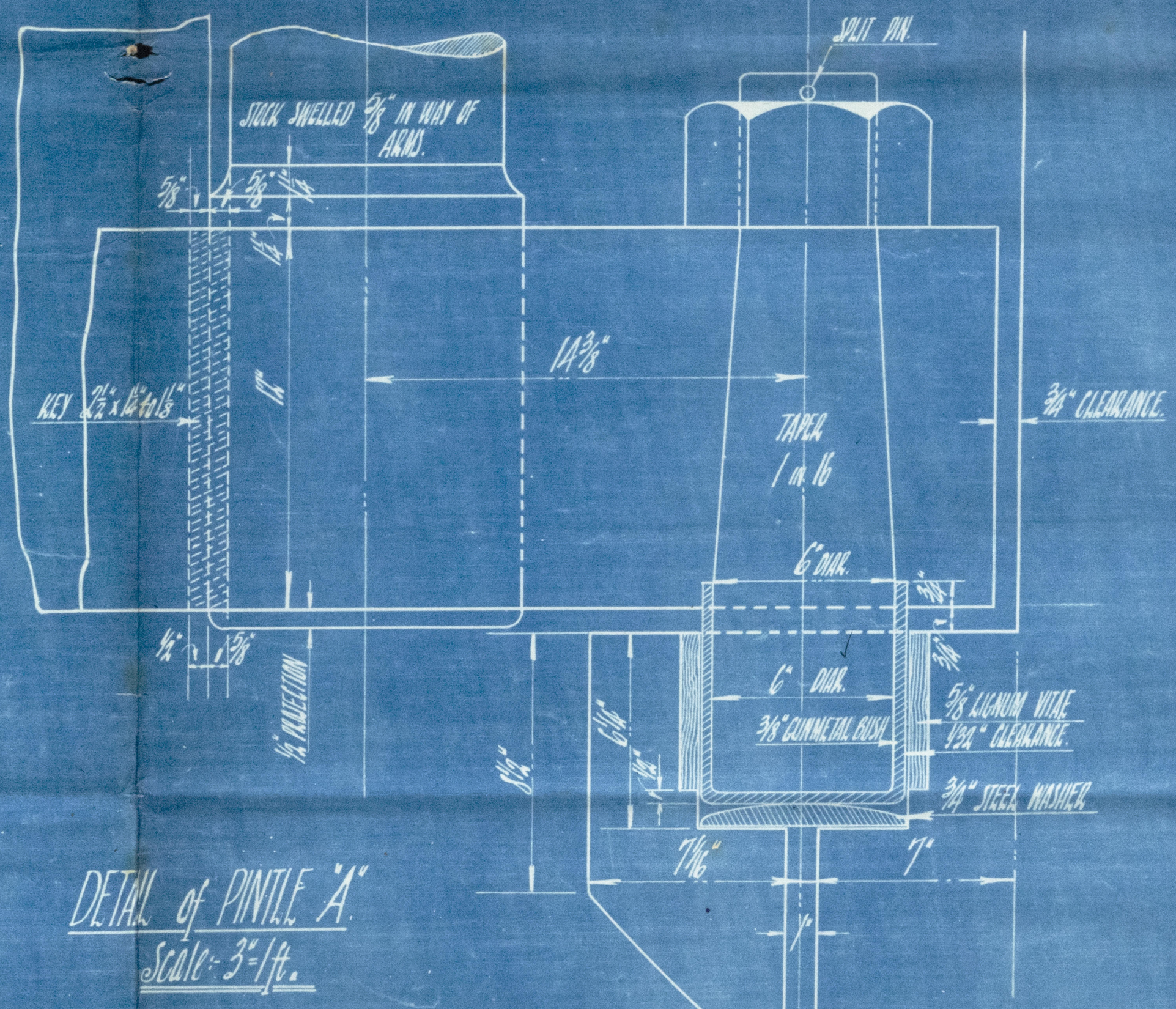
Rudder Post and Horn
by Mr. Steel



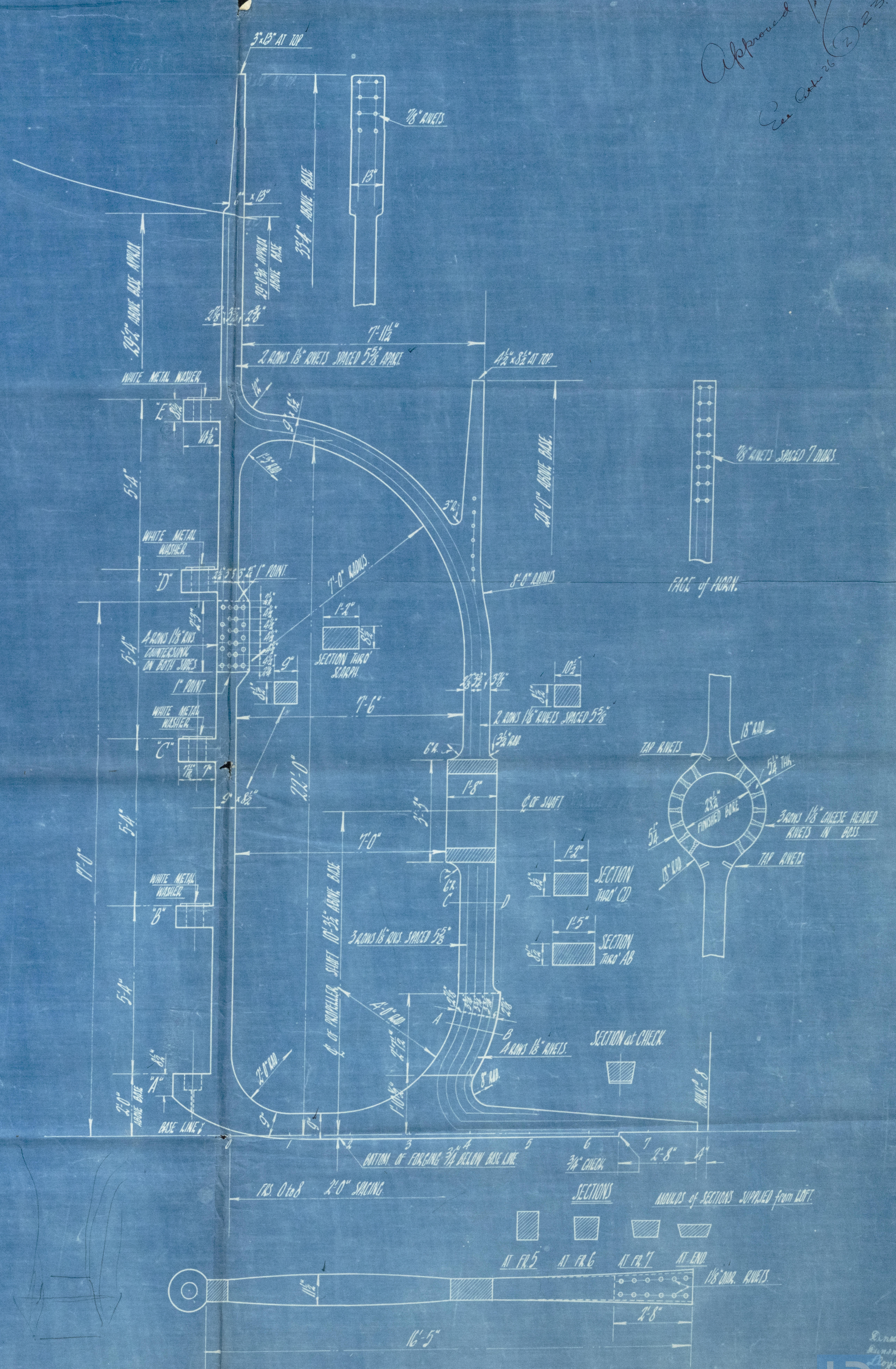
PARTICULARS.
SPEED 11 KNOTS
AREA OF RUDDER 176 sq. ft.
CENTRE OF GRAVITY 4' 6" OF PIVOTS
DIAMETER OF RUDDER STOCK 12 in.
RUDDER HAND OVER AT AN ANGLE OF 13°
OFFSETS FOR RUDDER PLATE ARE FROM FACE OF PIVOTS.
RUDDER STOPPERS FITTED ON DECK.



DETAIL of PIVOTS 'B', 'C', 'D' & 'E'.
Scale - 3/4" = 1 ft.
NOTE: FIELD ON 'E' PIVOT ONLY



DETAIL of PIVOT 'A'.
Scale - 3/4" = 1 ft.



24 FEB. 1923



Approved
See also 10/2/23

7

Final Sudder & Sternpost

Wyrshire Bld. Co.

No. 494.

26.2.22.

'BARON MACLAY'



© 2021

Lloyd's Register
Foundation

013329-013338-0410

Ayrshire Dockyard Co
494
Tinae Rudder + Sternframe

Bag

Ayrshire Dockyard Co
494

Tinae Rudder + Sternframe

Nov 20

SS "Baron MacLay"

7

0410



© 2021

Lloyd's Register
Foundation