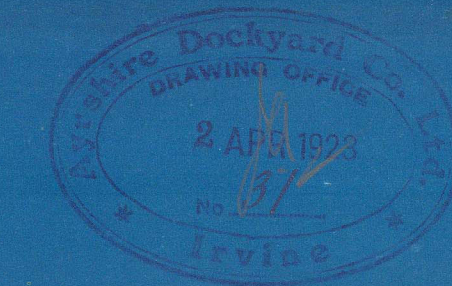
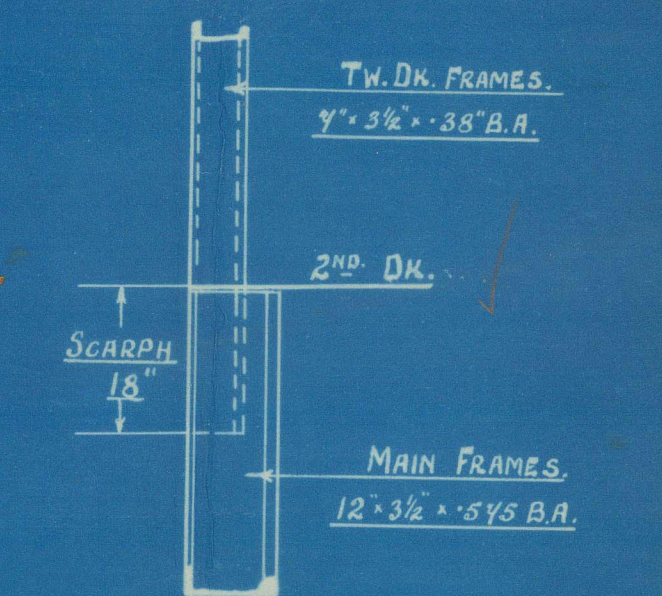


# No 494. FRAMING PROFILE.

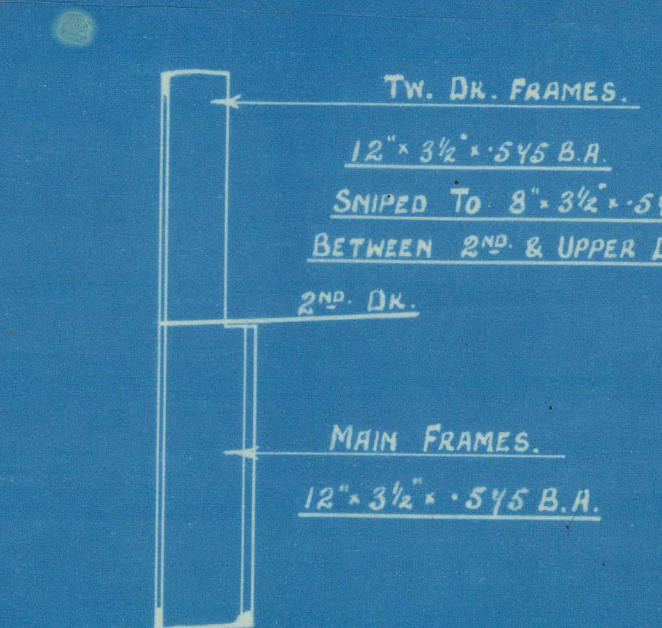
SCALE.  $\frac{1}{8}$ " = 1 FOOT.



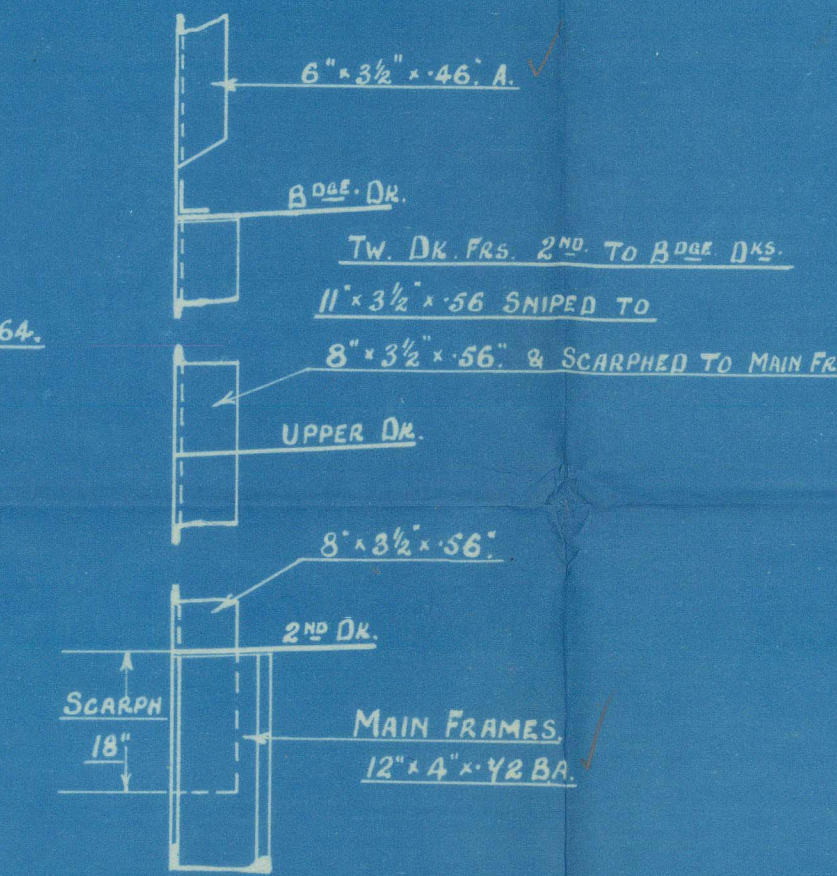
TYPICAL SECTION IN WAY OF No 5 HOLD.



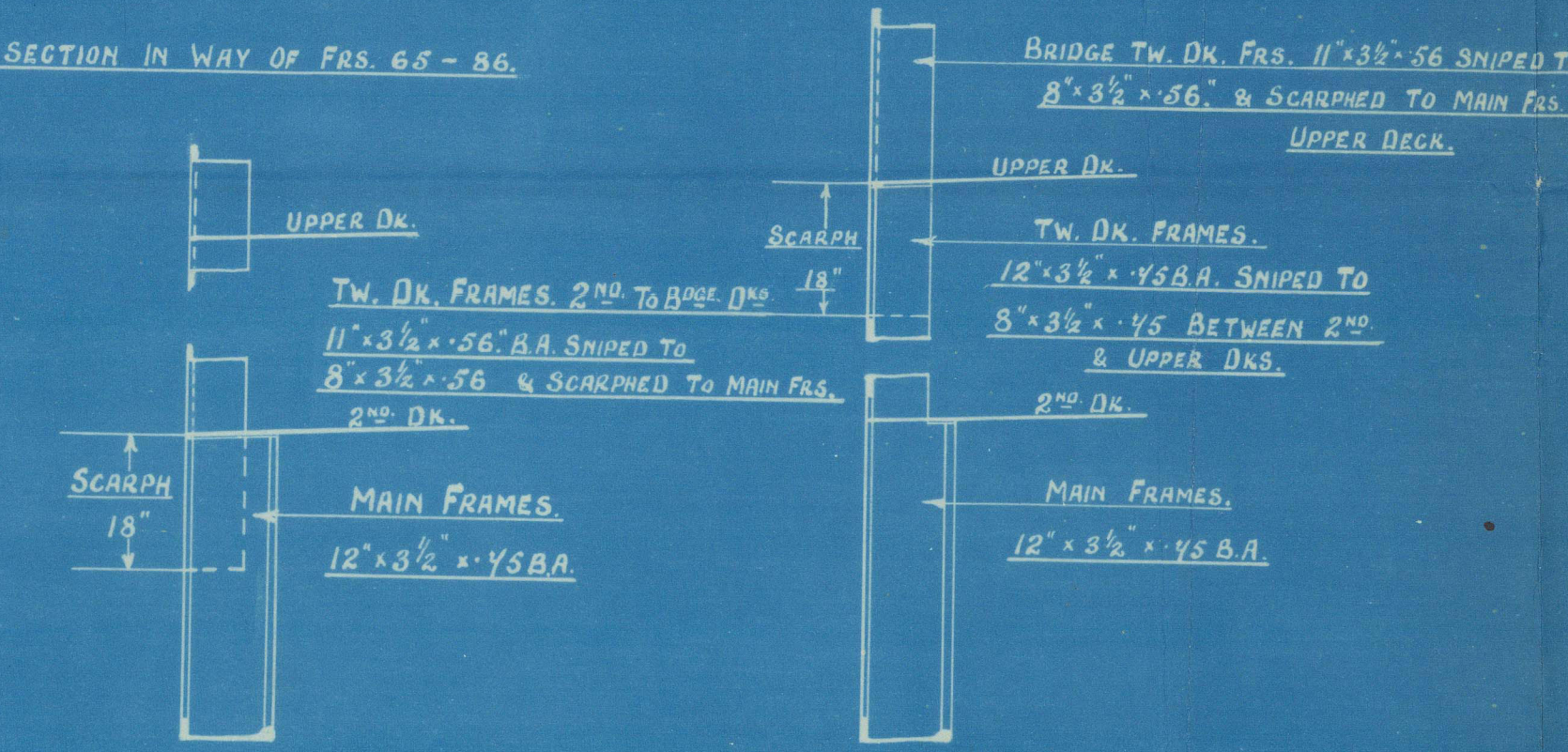
TYPICAL SECTION IN WAY OF No 4 HOLD.



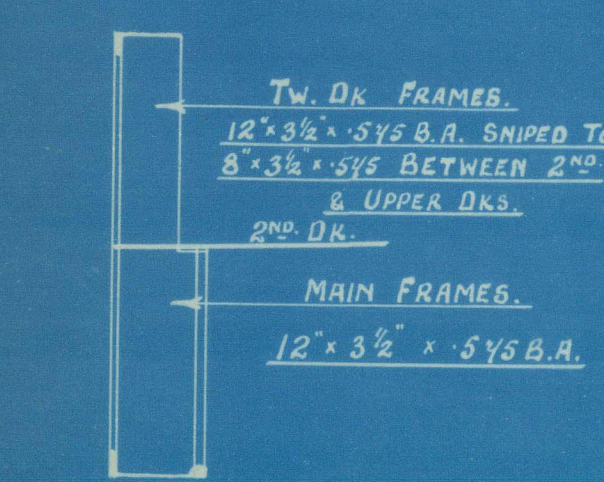
TYPICAL SECTION IN WAY OF FRG. 52-64.



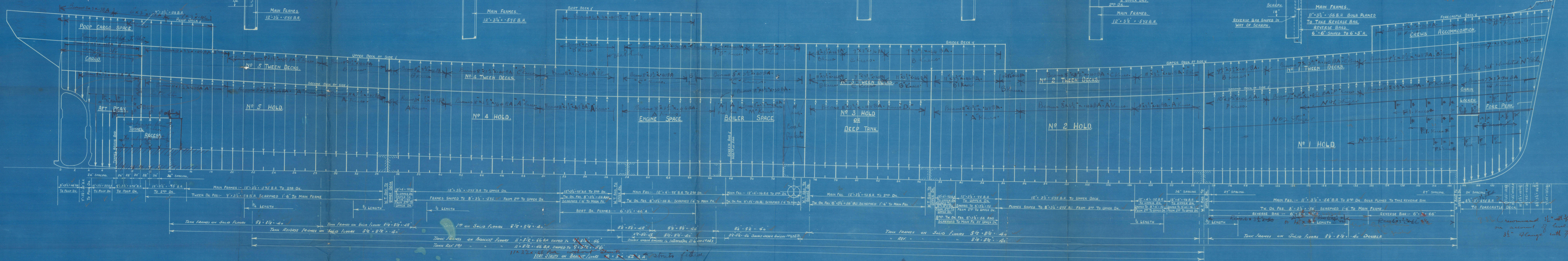
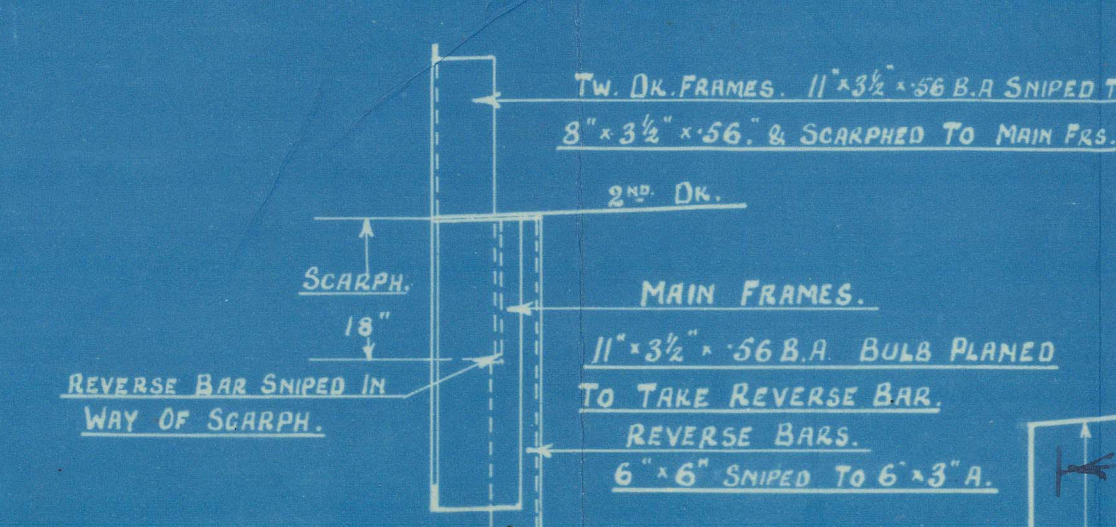
TYPICAL SECTION IN WAY OF FRG. 65-86.



TYPICAL SECTION IN WAY OF No 2 HOLD.



TYPICAL SECTION IN WAY OF No 1 HOLD.



8 APR 1923

Approved *[Signature]*  
See also 3 & 23



13

Framing Profile.

Ayrshire Shd. Co.

No. 494.

2. 4. 73.

S/5 BARON MACLAY

Ayrshire's  
494  
framing profile  
Bag.

13

Ayrshire Socayan Co  
494

Framing Profile

3 4 73

S/5 Baron MacLay

13

Q3383-01338-0469



© 2021

Lloyd's Register  
Foundation