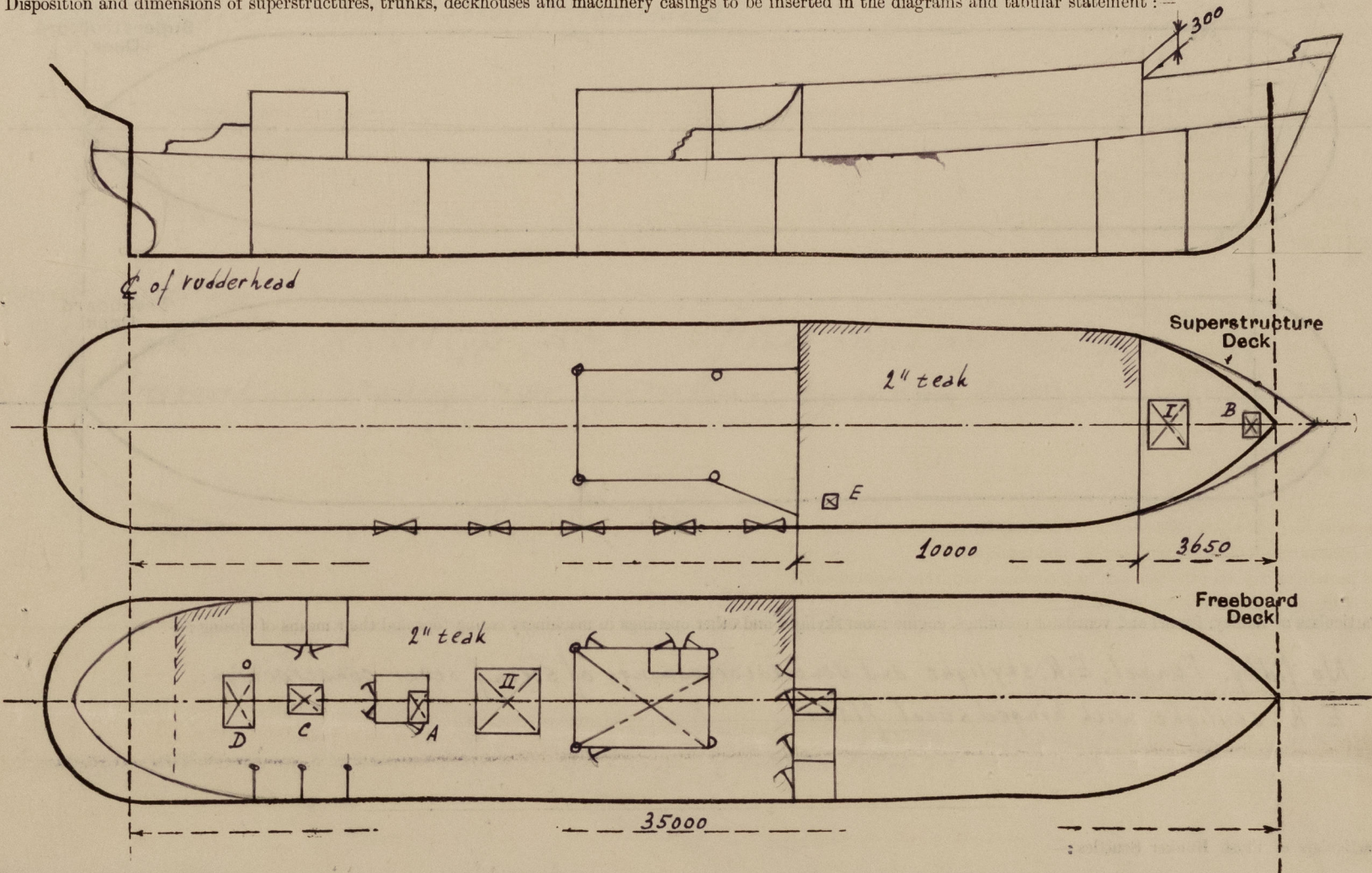


Lloyd's Register of Shipping.
SURVEYS FOR FREEBOARD.
(CONDITIONS OF ASSIGNMENT.)

Ship's Name BABUT Port of Survey Rotterdam
Official Number ✓ Surveyor's Signature Kraayenbui
Nationality and Port of Registry Indonesian. Djakarta. Date of Survey July-August 1952

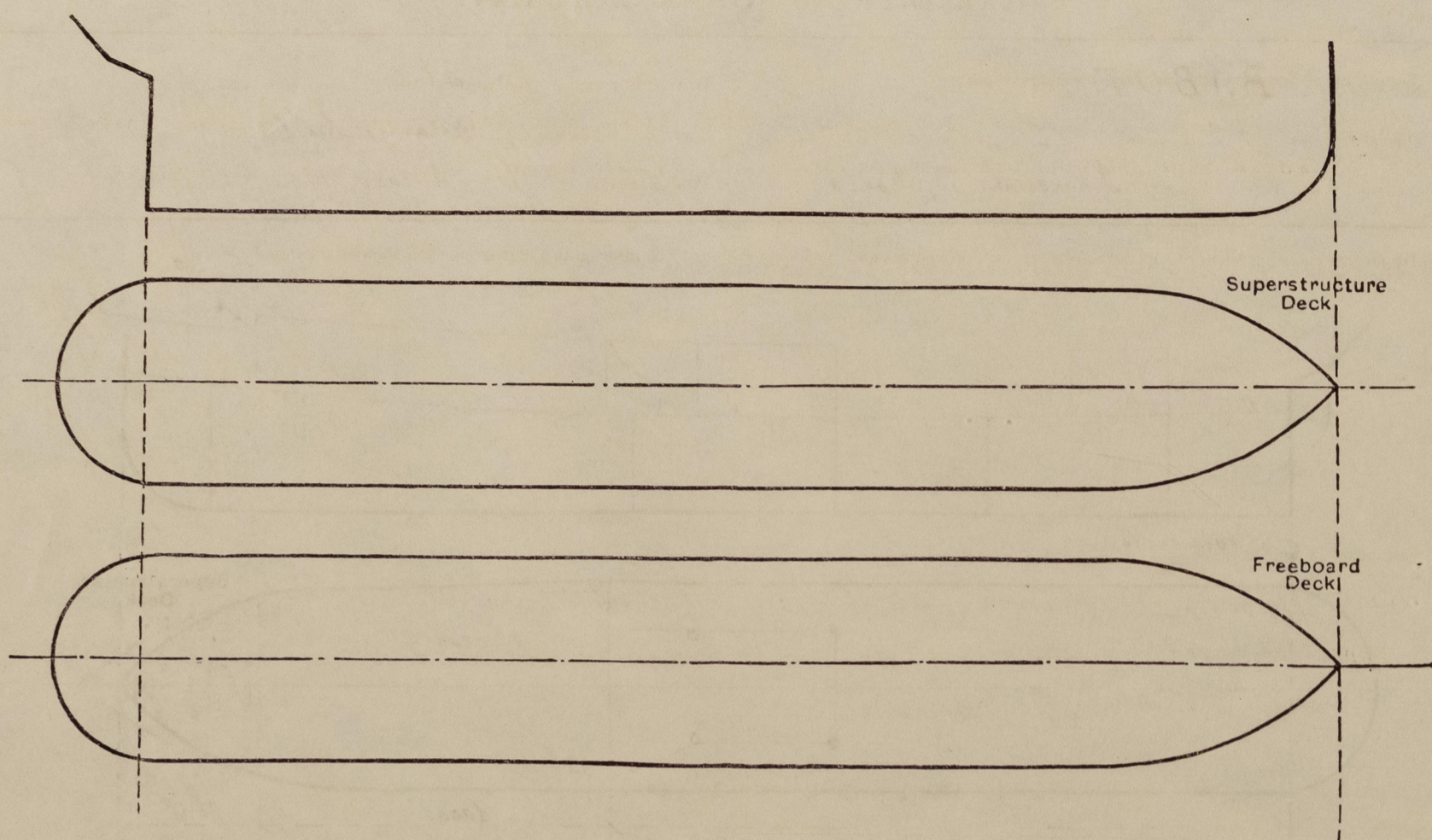
Disposition and dimensions of superstructures, trunks, deckhouses and machinery casings to be inserted in the diagrams and tabular statement:—



Particulars of Superstructures, Trunks, Casings, Deckhouses.								
	Coaming	Plating	Stiffeners	Spacing	End Attachments of Stiffeners	Size of Openings	Height of Sills	Height of Casings
Poop Bulkhead								
Raised Quarter Deck Bulkhead ...								
Bridge, After Bulkhead	7	5½	∟ 65.50. 6½	550	none	1400. 630	460	2100
Bridge, Forward Bulkhead								
Forecastle Bulkhead	7	7	∟ 65.50. 6½	600-500	EW	none	✓	1800
Trunk, Aft								
Trunk, Forward								
Exposed Machinery Casings on Freeboard or Raised Quarter Decks ...	7	5½	∟ 65.50. 6½	500	knees on top	1400. 600	460	2100
Exposed Machinery Casings on Superstructure Decks								
Machinery Casings within Superstructures not fitted with Class I Closing Appliances							✓	
Deckhouses on Flush Deck Ships ...								
Particulars of Closing Appliances (state if capable of being manipulated from both sides).								
Poop Bulkhead								
Raised Quarter Deck Bulkhead ...								
Bridge, After Bulkhead	2 WT hinged steel doors, operable from both sides.							
Bridge, Forward Bulkhead								
Forecastle Bulkhead	none							
Exposed Machinery Casings on Freeboard or Raised Quarter Decks ...	2 WT hinged steel doors, operable from both sides.							
Exposed Machinery Casings on Superstructure Decks								
Machinery Casings within Superstructures not fitted with Class I Closing Appliances								
Deckhouses on Flush Deck Ships ...								

PARTICULARS OF PROTECTION TO OPENINGS, ETC.

The following diagrams should be used to indicate the positions of cargo and coaling hatchways, gangway, cargo and coaling ports, ventilators, companionways, etc., which would affect the seaworthiness of the ship:—



Particulars of fiddle, funnel and ventilator coamings, engine room skylight and other openings in machinery casing tops and their means of closing:—

No fiddle. Funnel, E.R. skylight and ventilator coamings of strong steel construction.
E.R. skylight with hinged steel flaps.

Particulars of Flush Bunker Scuttles:—

Particulars of Companionways:—

On freeboarddeck strong steel deckhouse aft, giving access to accommodation aft, under freeboarddeck, with hinged steel WT door, operable from both sides, sill ~~460~~ 610 mm (A)

Particulars of Ventilators in exposed positions on freeboard and superstructure decks:—

On forecastledeck: 2 vent. coamings 915 x ϕ 300. plate 8 1/2, to store under forecastle.
2 gooseneckvents on cargo hold 460 x ϕ 150. with wooden plugs and canvas covers.
On bridgedeck: 1 vent. coaming 400 x 400, 200 high, 5mm plate. with electric fan direct bolted on coaming. Wooden sliding cover provided for air intake and canvas cover for electric fan. (E) ~~vent~~
On freeboarddeck: 2 vent. coamings forming part of engine casing, plate 10, 7 and 5mm, coaming up to 760 above casing deck, leading to engine room.
2 vents on derrick posts, sufficiently supported by E.R. casing, suff. high above deck, ϕ 250, plate 14mm, leading to cargo hold.
1 vent. coaming 965 x ϕ 300. plate 8 1/2. suff. supported, leading to provision store.
Wooden plugs and canvas covers provided.

Particulars of Air Pipes in exposed positions on freeboard, raised quarter, or superstructure decks:—

On forecastle- and bridgedeck 460mm high.
On freeboarddeck 920mm high.
Air pipes on watertanks provided with wooden plugs and canvas covers.
" " oil tanks " " patent gas caps and canvas covers.

Particulars of Gangway Cargo and Coaling Ports:—

Babut.

Particulars of Scuppers and Sanitary Discharge Pipes:—

On forecastledeck each side one scupper pipe ϕ 76 x 8, through shell plating above waterline, below freeboarddeck.
On maindeck each side 4 scuppers ϕ 76 x 8 through shell plating above waterline, below freeboarddeck.
All sanitary discharges, leading overboard through bronze SDNR valves. fitted with open / shut indicators.
All sanitary spaces situated above freeboarddeck.

Particulars of Side Scuttles:—

Below freeboarddeck of fixed type. 12" ϕ bronze frames, hinged steel deadlights.
Above freeboarddeck 12" ϕ hinged type, bronze frames, hinged steel deadlights.

Vertical distance of Sill of lowest Side Scuttle above top of keel 2470 mm (4100 mm forward of 1/2 L)

Particulars of Guard Rails:—

On forecastledeck steel bulwarks 300 x 6. railing bar ϕ 100. 65. 7. suff. supported. Strong 11rod railing on top. Total height 920.
On bridgedeck, open railing, 2 rods of strong construction, 1050 high.
On maindeck, steel bulwarks, frame 7 - bridge: 1100 x 6. railing bar ϕ 100. 65. 7. suff. supported.
frame 7 - aft: 550 x 6. railing bar ϕ 100. 65. 7. strong 2 rod railing on top. Total height 1100.

Particulars of Gangways, Lifelines, etc.:—

Provisions for rigging lifelines provided.

Particulars of Freeing Arrangements.

	Length of Bulwark	Height of Bulwark	Size of Freeing Ports	Number each side	Area each side	Rule area each side
After Well Forecastledeck	5400	300	200 x 150 mooring pipe 3" scupper pipe	1 1		
Forward Well Freeboarddeck	18150 4500	1100 550	1250 x 200 3" scupper pipe	5 4	1.25m ²	1.158m ²

State position of each freeing port ... (F. and A. position and height above deck edge) { After Well:— forecastledeck 135 above deck
Forward Well:— freeboarddeck 165 " "

State whether the freeing ports are fitted with shutters, bars, or rails, and give particulars of such:— 3 bars (horizontal)

Additional area where sheer is less than standard.

PARTICULARS OF PROTECTION TO OPENINGS, ETC.

HATCHWAYS ON FREEBOARD AND SUPERSTRUCTURE DECKS.									
Description of Hatchway			Forecaside deck No I		Freeboard deck No II				
Dimensions of Hatchway			1210 x 1210		2000 x 1800				
COAMINGS	{	Height above Deck	610		750				
		Thickness { Sides	77		77				
		{ Ends	77		77				
		Stiffeners	✓		130.65.8				
Brackets, Stays			✓		✓				
HATCH BEAMS	{	Number	/		/				
		Spacing	/		/				
Scantling and Sketch			/		/				
Bearing Surface			/		/				
FORE AND AFTERS	{	Number	/		1				
		Spacing	/		900				
		Unsupported Lengths	/		1840				
		Scantling* and Sketch	/		150.150				
Bearing Surface			/		teak				
HATCH COVERS	{	Material	steel		teak				
		Thickness	6		60				
		How fitted	hinged		transverse				
		Bearing Surface	WT		65 70				
Spacing of Cleats			✓		500				
Number of Tarpaulins			✓		2				
*Are wood fore and afters steel shod at all bearing surfaces?			yes						
Are battens and wedges efficient and in good condition?			yes						
Are tarpaulins in good condition and in accordance with rule requirements?			yes						
Are lashings provided in accordance with rule requirements?			yes						

Particulars of any special features:—

On forecastle deck one hatch leading to store 550x457. coaming 130x7. hinged steel WT hatch 6mm (B)

On freeboard deck strong steel skylight on accommodation aft. 660 high. 7mm plate, with hinged steel WT flaps with bronze bulleyes (C)

" " one hatch on steering engine room 1000 x 900. coaming 450x7. With hinged steel WT hatch (D)

In no 2 hatch coaming 6 bronze sidescuttles 12"φ of fixed type, with hinged steel deadlights, underside 125 mm above deck

Endorsement at first survey and at surveys for renewal of Certificate:—

The fittings and appliances are in accordance with the particulars shown on this form (or as now modified) and are in good condition.

