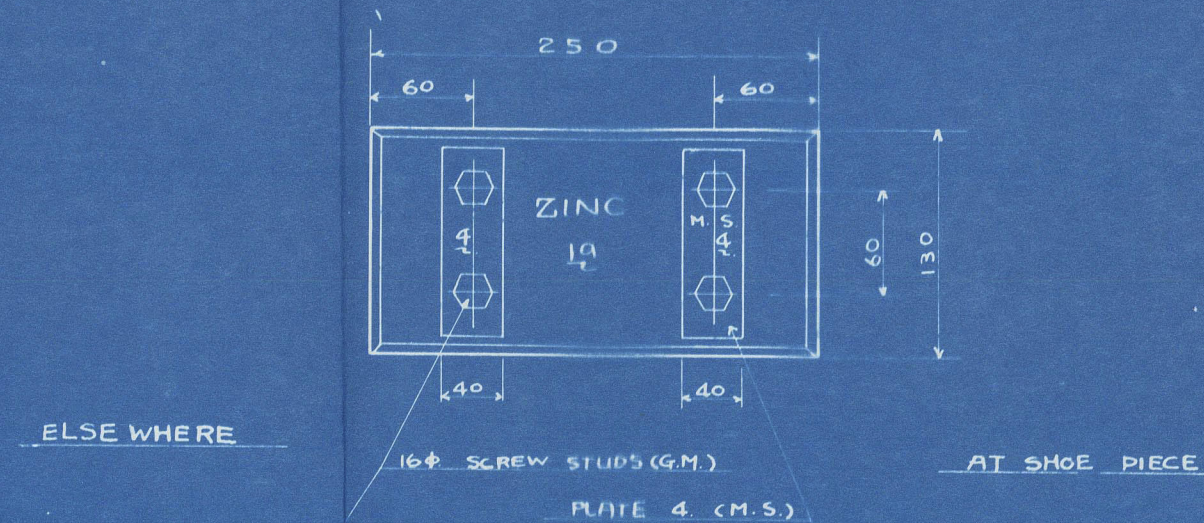


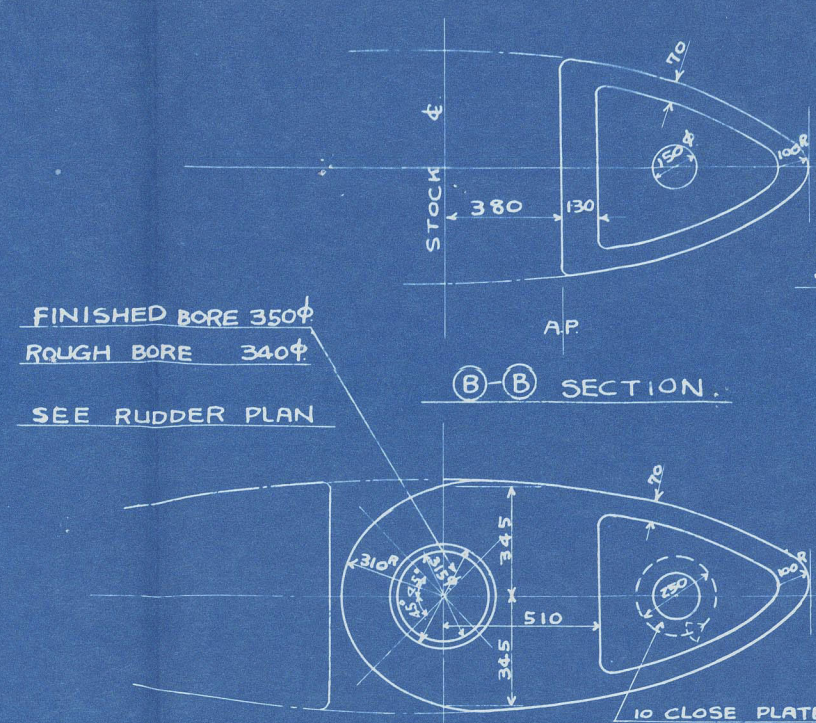
STERNFRAME

SCALE 1/25

DETAIL OF ZINC PLATE
1/5
12 PIECES

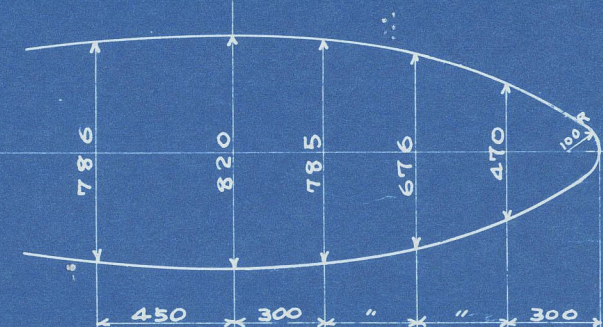


(A)-(B) SECTION

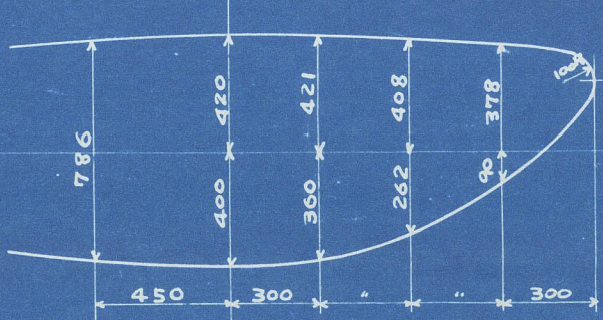


SECTIONAL FORM OF RUDDER
SHOWING OUTSIDE OF PLATE

TOP AND BOTTOM



SHAFT CENTRE



2,640
LEADING EDGE LINE

2,600
LEADING EDGE LINE

BASE LINE

BASE LINE

DEGREE OF FINISHING	
✓	SMOOTH SURFACE
▽	ROUGH FINISH
∇	MEDIUM FINISH
∇	FINE FINISH

MATERIAL OF STERN FRAME

CAST STEEL

WEIGHT ABOUT 22.5T

This plan in accordance with the approval plan

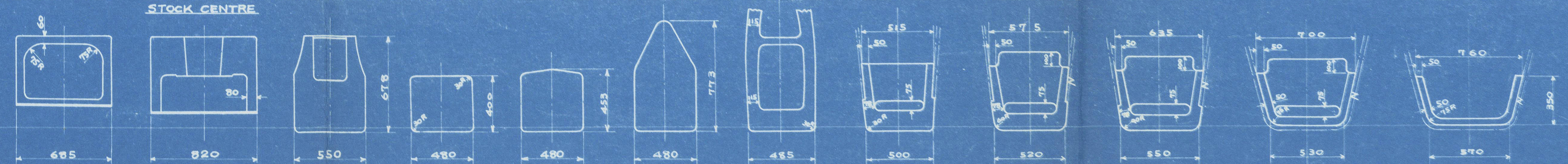



SNO. 467
TAIEI MARU
STERNFRAME
DRAWING NO. H-5

SNO. 467
太榮丸
船尾骨格
完成圖

尺度 1/25
船政設計課
27.2.16

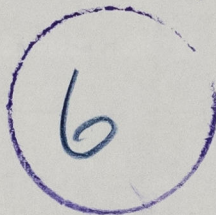
SECTION AT @ SECTION AT STOCK CENTRE F.1 SECTION F.2 SECTION F.3 SECTION F.4 SECTION F.5 SECTION F.6 SECTION F.7 SECTION F.8 SECTION F.9 SECTION FORE END SECTION



'TAIEI MARU' 

Stern frame.

RECORDS DEPT.:
LONDON



© 2021

Lloyd's Register
Foundation

013284 013292 0174