

30 JAN 1952

Index No. 43392  
(For London Office only.)

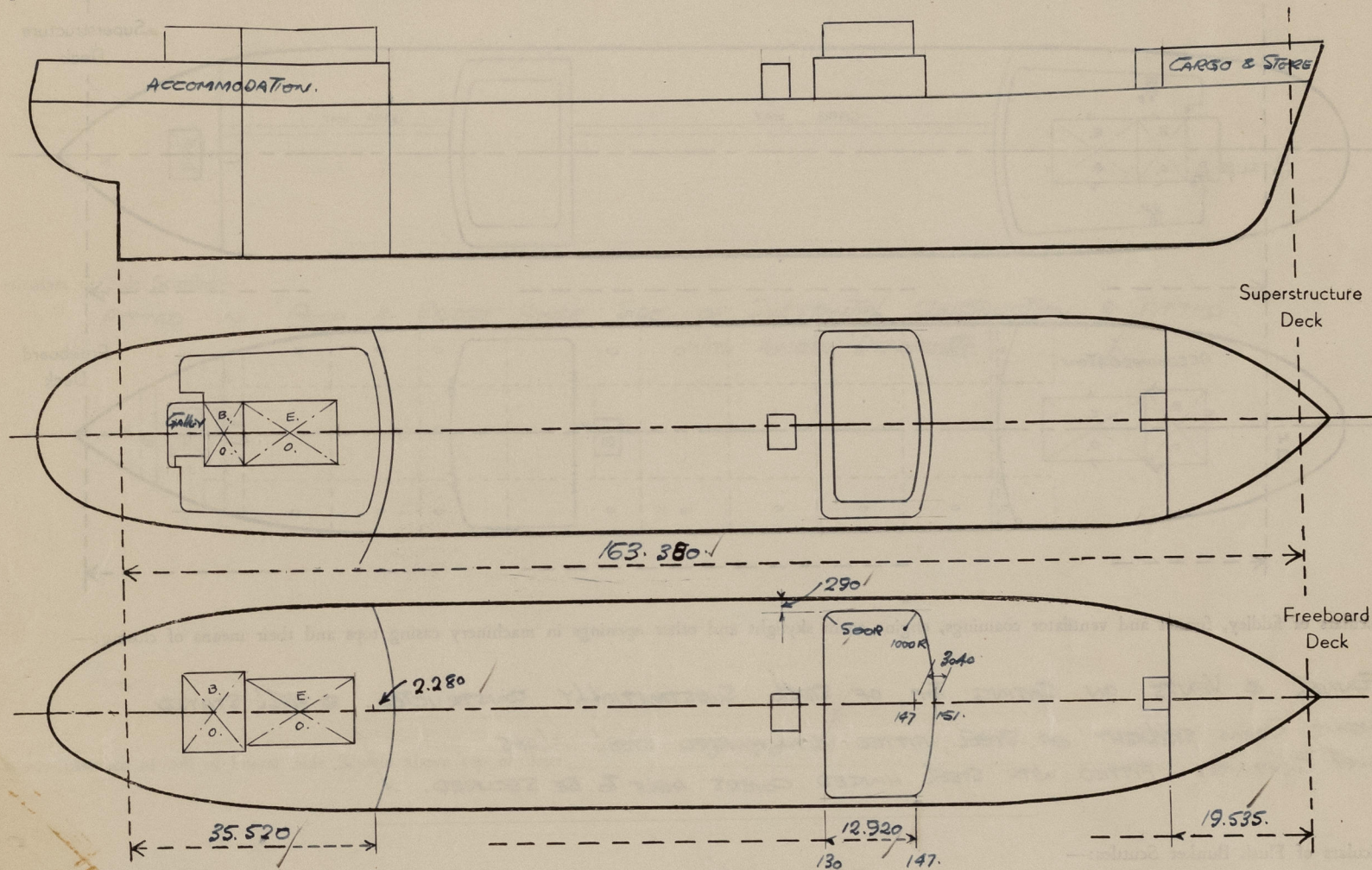
# Lloyd's Register of Shipping.

## SURVEYS FOR FREEBOARD.

(CONDITIONS OF ASSIGNMENT.)

Ship's Name TAI EI MARU Port of Survey At O. JAPAN.  
Official Number \_\_\_\_\_ Surveyor's Signature G. Young  
Nationality and Port of Registry JAPAN. Date of Survey During Construction

Disposition and dimensions of superstructures, trunks, deckhouses and machinery casings to be inserted in the diagrams and tabular statement:—

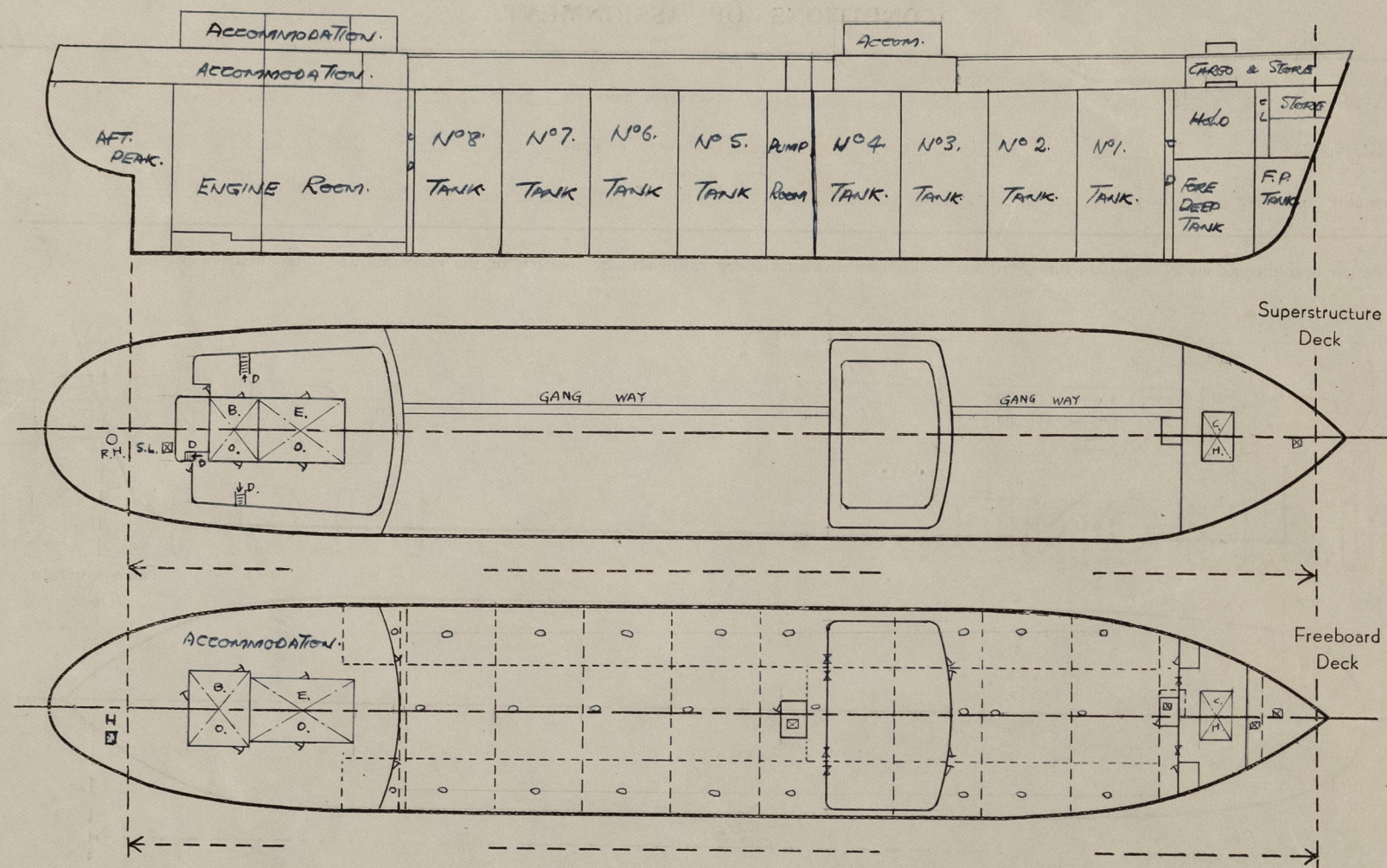


Particulars of Superstructures, Trunks, Casings, Deckhouses.								
	Coaming	Plating	Stiffeners	Spacing	End Attachments of Stiffeners	Size of Openings	Height of Sills	Height of Casings
Poop Bulkhead ...	11 /	11 /	250 x 90 x 12/15.5 I	760	BKT TOP & BOTTOM.	1340 x 600	610.	2.350.
Raised Quarter Deck Bulkhead ...	✓							
Bridge, After Bulkhead ...	8	8	125 x 75 x 7 I	760.	NONE	915 x 1250.	610.	2.300.
Bridge, Forward Bulkhead ...	11.	11.	250 x 90 x 12/15.5 I	760.	BKT TOP & BOTTOM.	900 x 1340.	610.	2.300.
Forecastle Bulkhead ...	8	8	75 x 75 x 9 I	760	NONE	915 x 1250. 600 x 1470.	380.	2.300.
Trunk, Aft ...	✓							
Trunk, Forward ...	✓							
Exposed Machinery Casings on Freeboard or Raised Quarter Decks ...	✓							
Exposed Machinery Casings on Superstructure Decks ...	8.	8.	100 x 10. F.B.	760	BKT AT TOP	NONE	NONE	300.
Machinery Casings within Superstructures not fitted with Class I Closing Appliances ...	9.	7-8.	100 x 10. F.B.	760.	BKT AT TOP. BOTTOM CONTINUOUS	600 x 1620.	270.	2.440.
Deckhouses on Flush Deck Ships ...	11.	11.	250 x 30 x 12. B.A.	760.	BKT TOP & BOTTOM.	600 x 1340.	610	2.300.
Particulars of Closing Appliances (state if capable of being manipulated from both sides).								
Poop Bulkhead ...	HINGED STEEL W/T. DOORS - CAPABLE OF BEING MANIPULATED FROM BOTH SIDES. ✓							
Raised Quarter Deck Bulkhead ...	✓							
Bridge, After Bulkhead ...	STEEL PLATE SECURED BY HOOKED BOLTS & NUTS. ✓							
Bridge, Forward Bulkhead ...	HINGED STEEL W/T. DOORS. - CAPABLE OF BEING MANIPULATED FROM BOTH SIDES. ✓							
Forecastle Bulkhead ...	STEEL PLATE SECURED BY HOOKED BOLTS & NUTS. ✓							
Exposed Machinery Casings on Freeboard or Raised Quarter Decks ...	✓							
Exposed Machinery Casings on Superstructure Decks ...	✓							
Machinery Casings within Superstructures not fitted with Class I Closing Appliances ...	STEEL HINGED DOORS - CAPABLE OF BEING MANIPULATED FROM BOTH SIDES ✓							
Deckhouses on Flush Deck Ships ...	HINGED STEEL W/T DOORS - CAPABLE OF BEING MANIPULATED FROM BOTH SIDES. ✓							



# PARTICULARS OF PROTECTION TO OPENINGS, ETC.

The following diagrams should be used to indicate the positions of cargo and coaling hatchways, gangway, cargo and coaling ports, ventilators, companionways, etc., which would affect the seaworthiness of the ship:—



Particulars of fiddley, funnel and ventilator coamings, engine room skylight and other openings in machinery casing tops and their means of closing:—

FUNNEL & VENTS ON CASING TOP, OF STEEL, SUBSTANTIALLY CONSTRUCTED & WELL STATED.  
ENGINE ROOM SKYLIGHT OF STEEL, FITTED WITH HINGED STEEL FLAPS  
FIDLEY GRATINGS FITTED WITH STEEL HINGED COVERS ABLE TO BE SECURED.

Particulars of Flush Bunker Scuttles:—

NONE

Particulars of Companionways:—

POOP DECKHOUSE OF STEEL, STRONGLY CONSTRUCTED, ENCLISING 3 STAIRWAYS (DOWN TO UPPER DECK ACCOMM)  
AFT END - DOOR OPENINGS - 1430 x 730 WITH SIS<sup>1/2</sup> SILL - STRONG WOOD DOORS } CAPABLE OF BEING MANIPULATED FROM BOTH SIDES.  
FRONT - DOOR OPENINGS - 1490 x 720 WITH SIS<sup>1/2</sup> SILL - HINGED STEEL W/T DOORS

Particulars of Ventilators in exposed positions on freeboard and superstructure decks:—

DECK.	Nº.	TYPE	SIZE	COAMING	HT TO LIP	SPACE
FORECASTLE DR	4.	M.V.	400.	1510 x 10.	460.	CARGO SPACE
FORD PUMP ROOM.	6.	G.N.	100.			STORES.
	1.	C.V.	300.	915 x 10.		PUMP ROOM.
	4.	C.V.	200.	915 x 10.		F&A C/DAMS.
UPPER DR.	2.	C.V.	585.	3100 x 11.		PUMP ROOM.
	1.	C.V.	725.	1400 x 10.		PUMP ROOM.
BRIDGE DR.	4.	G.N.	100.		460.	STORES.
POOP DR.	2.	C.V.	400.	760 x 10.		PASSAGE
	1.	C.V.	300.	760 x 10.		STEERING GEAR
	11.	M.V.	150.	460 x 9.		STORES.
	7.	G.N.	100.		460.	STORES ETC
	3.	G.N.	100.		460.	STORES.

VENTS MARKED X BRACKETED OR STIMED TO THE DECK  
CLOSING APPLIANCES.

MUSHROOM VENTS FITTED WITH S.D. W/T. COVERS.  
GOOSENECK VENTS FITTED WITH HINGED W/T. FLAPS.  
COAL VENTS FITTED WITH WOOD PLUGS & CANVAS COVERS.

Particulars of Air Pipes in exposed positions on freeboard, raised quarter, or superstructure decks:—

DECK	Nº.	SIZE	HT TO LIP	TANK.
FORECASTLE DR.	1.	100.	760.	F.D. TANK.
	1.	25.	760.	AIR CHAMBER.
	1.	80.	760.	F.D. T.K.
UPPER DR.	2.	130.	915.	F.D. T.K.
POOP DR.	2.	140.	760.	O.F. BUNKER.
	2.	100.	760.	O.F. D.B.
	2.	50.	760.	C/DAMS.
	4.	80.	760.	F.W. D.B.
	1.	25.	760.	AIR CHAMBER
	4.	80.	760.	F.W. T.E.S.
	2.	80.	760.	A.P. T.K.

CLOSING APPLIANCES.  
ALL AIR PIPES FITTED WITH HINGED W/T. FLAPS.  
ALL OIL FUEL AIR PIPES FITTED WITH GAUZE.

Particulars of Gangway Cargo and Coaling Ports:—

NONE

Particulars of Scuppers and Sanitary Discharge Pipes:—

POOP. SCUPPERS & SANITARY DISCHARGES, LED THROUGH SHELL APPROX 2'-5" ABOVE L.W.L. & FITTED WITH STEAM VALVES  
BRIDGE SCUPPERS & SANITARY DISCHARGES, LED THROUGH SHELL ABOVE FREEBOARD DECK & FITTED WITH STEAM VALVES.

Particulars of Side Scuttles:—

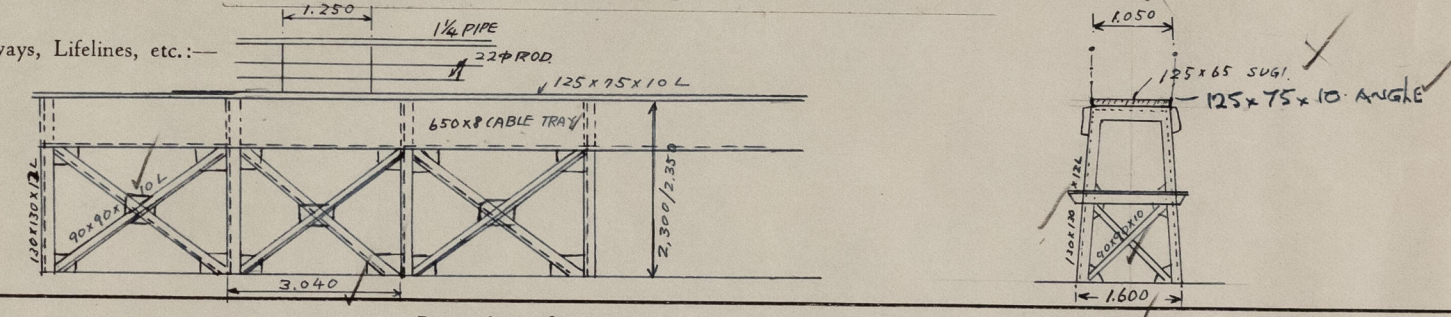
FITTED IN POOP & BRIDGE HOUSE SIDE, OF SUBSTANTIAL CONSTRUCTION & FITTED WITH HINGED DEADLIGHTS.

Vertical distance of Sill of lowest Side Scuttle above top of keel 13.120

Particulars of Guard Rails:—

FORECASTLE, UPPER & POOP DECKS  
3 TIER RAILS. TOP - 1 1/4" G.W.I. PIPE  
2 RAILS - 7/8" ROD.  
HEIGHT - 1.00 M.  
STANCHIONS SPACED APPROX 1.500 M. APART.

Particulars of Gangways, Lifelines, etc.:—



Particulars of Freeing Arrangements.

	Length of Bulwark	Height of Bulwark	Size of Freeing Ports	Number each side	Area each side	Rule area each side
After Well ... ..		OPEN	Rails.			
Forward Well ... ..						

State position of each freeing port ... .. { After Well:—

(F. and A. position and height above deck edge). { Forward Well:—

State whether the freeing ports are fitted with shutters, bars, or rails, and give particulars of such:—

Additional area where sheer is less than standard.



## PARTICULARS OF PROTECTION TO OPENINGS, ETC.

HATCHWAYS ON FREEBOARD AND SUPERSTRUCTURE DECKS.										FORECASTLE DK.	
FREEBOARD DK.											
Description of Hatchway		CARGO TANKS	O.F. BUNKER	C/DAM.	C/DAM.	BO. SNT STORO	CH. LKR.	HOLO.	DOOR STORO	ROAE HATCH.	TWEEN DK.
Dimensions of Hatchway		U.D.K. AFT.	U.D.K. AFT.	U.D.K. FORD	U.D.K. AFT.	U.D.K. FELE	U.D.K. FELE	U.D.K. FELE	U.D.K.	800 x	3425 x
		1500 x	600 x	600 x	600 x	800 x	600 x	3425 x	600 x	800 x	3425 x
		580.	600	450.	380.	800	600	4000	600	800.	4000
COAMINGS	Height above Deck	750.	760.	200.	200.	230	230	230.	230	610.	510.
	Thickness	12. ✓	12. ✓	12. ✓	12. ✓	12. ✓	12. ✓	11.	12. ✓	11. ✓	11. ✓
	Stiffeners										
	Brackets, Stays										
HATCH BEAMS	Number							STEEL PLATE			STEEL PLATE
	Spacing							COVER. 10" x			COVERS 10" x
FORE AND AFTERS	Scantling and Sketch							WITH 20" x			SURROUND PLATE
	Bearing Surface							SURROUND PLATE			20" x
HATCH COVERS	Material	O.T. COVER.				W.T. COVER		O.T. COVER	W.T. COVER.		
	Thickness	STEEL. 13" x				STEEL. 7.		SECURED BY	STEEL. 7. ✓		
HATCH COVERS	How fitted	SECURED	D2	D0.	D0.	SECURED BY	D0.	BOLTS & NUTS	SECURED BY	D0.	D0.
	Bearing Surface	BY EYEBOLTS & NUTS				EYEBOLTS & NUTS.			EYEBOLTS & NUTS.		
Spacing of Cleats		355.	330.	346.	326.	400.	400	250.	400.	350.	250
Number of Tarpaulins		APPROX.	APPROX	APPROX	APPROX.	APPROX.	APPROX	APPROX.	APPROX	APPROX.	APPROX

\*Are wood fore and afters steel shod at all bearing surfaces?  
 Are battens and wedges efficient and in good condition?  
 Are tarpaulins in good condition and in accordance with rule requirements?  
 Are lashings provided in accordance with rule requirements?

Particulars of any special features :—

POOD DECK: PROVISION STORE HATCH - 1200 x 1200 x 525 x 12 CORRUG. 8" STEEL W.T. COVER. } SECURED BY BEVERLYTS  
ROPE HATCH - 500" DIA. 460 x 12 CORRUG. 7" STEEL W.T. COVER } & BUTTERFLY NUTS  
FORECASTLE DK: ACCESS HATCH ON MAIN HATCH - 1000 x 1000 x 50 x 12 CORRUG. 8" " " " }  
UPPER DK: " " " " " - 1000 x 1000 x 60 x 12 CORRUG. 6" " " " }

PUMD ROOM SKYLIGHT: 2.700 x 1900 - 250 x 8 CORRUG. } FITTED WITH HINGED W.T. STEEL FLAPS. ✓  
AUXILIARY PUMP ROOM SKYLIGHT: 1420 x 820 - 100 x 8 CORRUG.