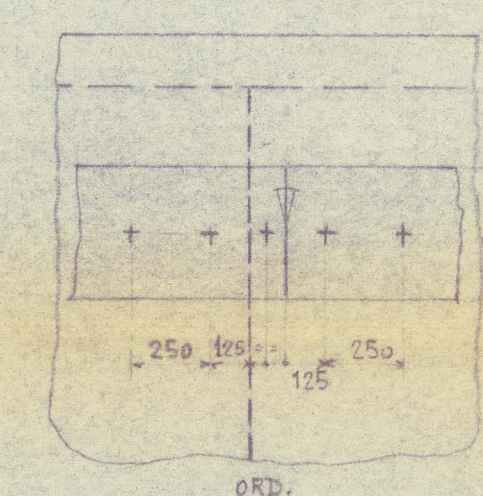
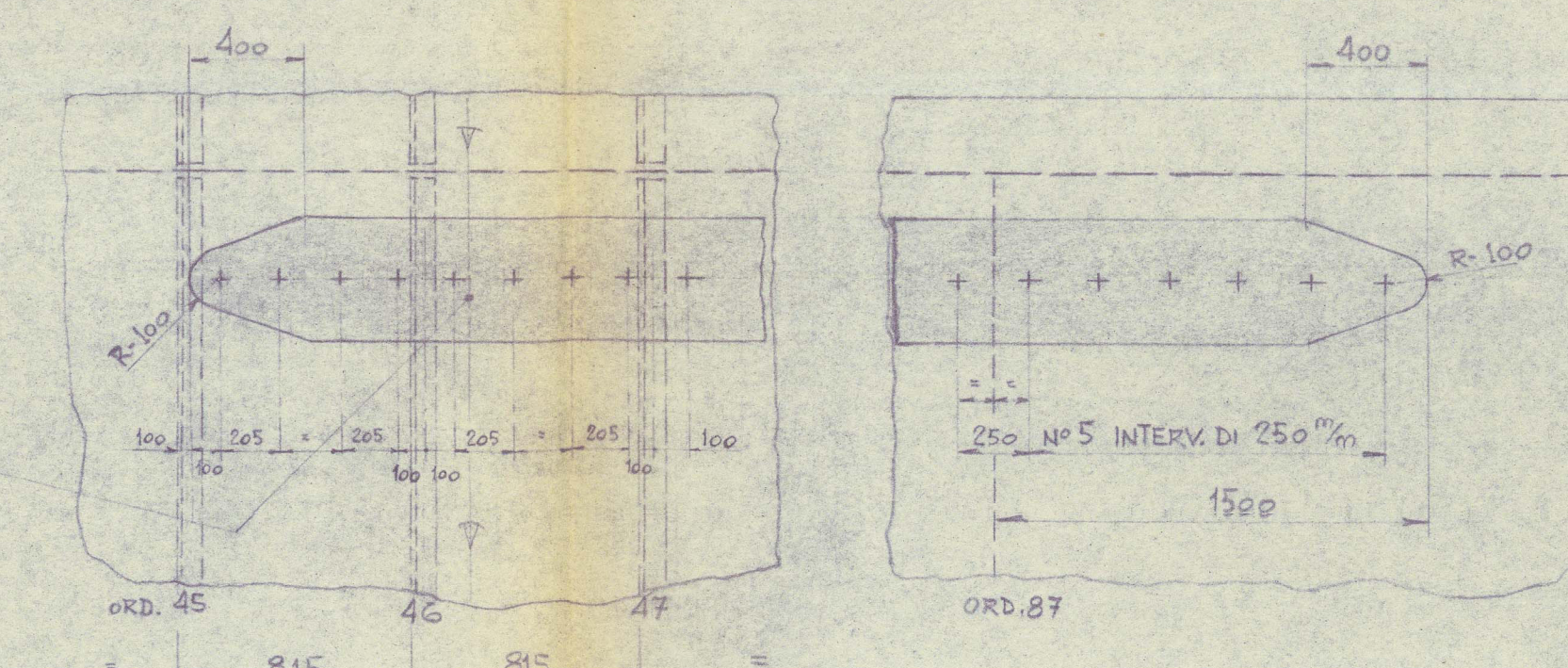


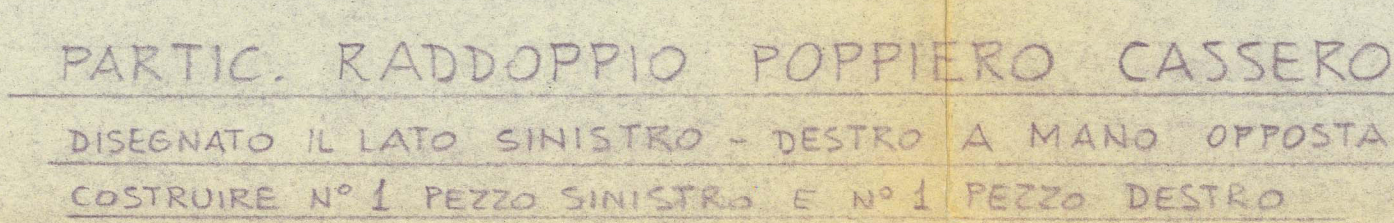
PARTIC. GIUNTO DI SALD. ^{RA} IN PROSSIM. ^{TA'} DELL'OSS. ^{RA}



PARTIC. ESTREM. ^{TA} RINFORZO CINTA

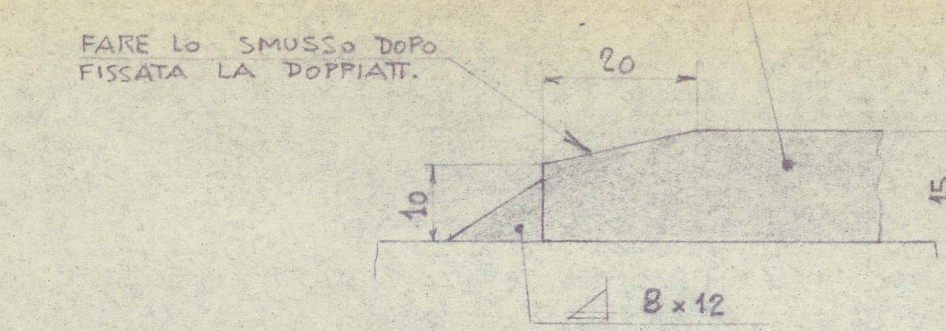


CINTA LATO DESTRO - SIMMETRICO LATO SINISTRO



PARTIC. RADDOPPIO PRODIERO CASSERO

DISEGNATO IL LATO SINISTRO - DESTRO A MANO OPPOSTA
COSTRUIRE N° 1 PEZZO SINISTRO E N° 1 PEZZO DESTRO



APPROVATO DAL R.I.N.A. COL N° 258368 IN DATA 9-4-1957

MATERIALE : ACCIAIO Ag. 42 SS - RADDOPPI CINTA

ACCIAIO Ag. 42-S- RADDOPPI SUL PONTE ESTREMITA' CASSERO

CORRESPONDING SUMMER DRAFT ABOVE TOP OF KEEL 10.423 M

97

ADRIACUM

T/C MARE ~~NOSTRUM~~

RINFORZI CINTA E RADDOPPI N° 11903

AC 70A
CASSERO CENTRALE

© 2021

SS/MS "max Adriacum"
TO ACCOMPANY... Gen. Rpt. No 22976
Dated... 21/1/58.
SUBJECT:- max Additional strengthening of bridge + steel. plat.

(2)

4 Drawings.

013186-013191-0119



© 2021

Lloyd's Register
Foundation