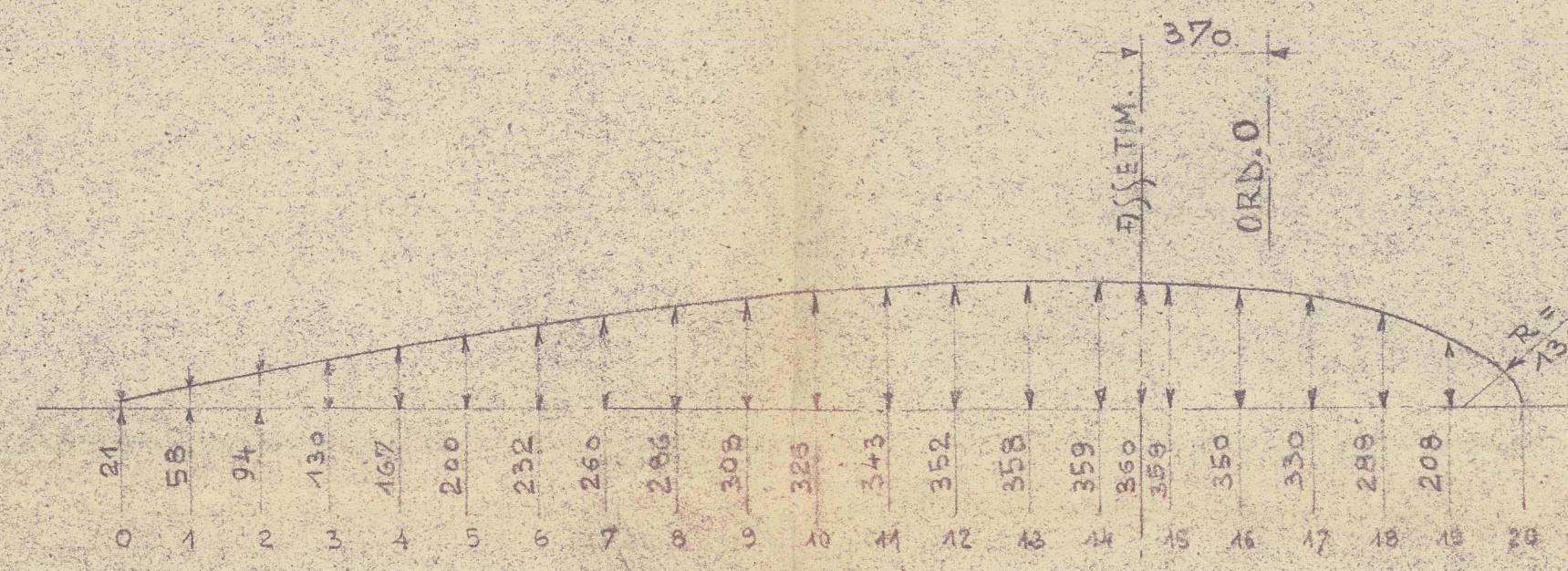
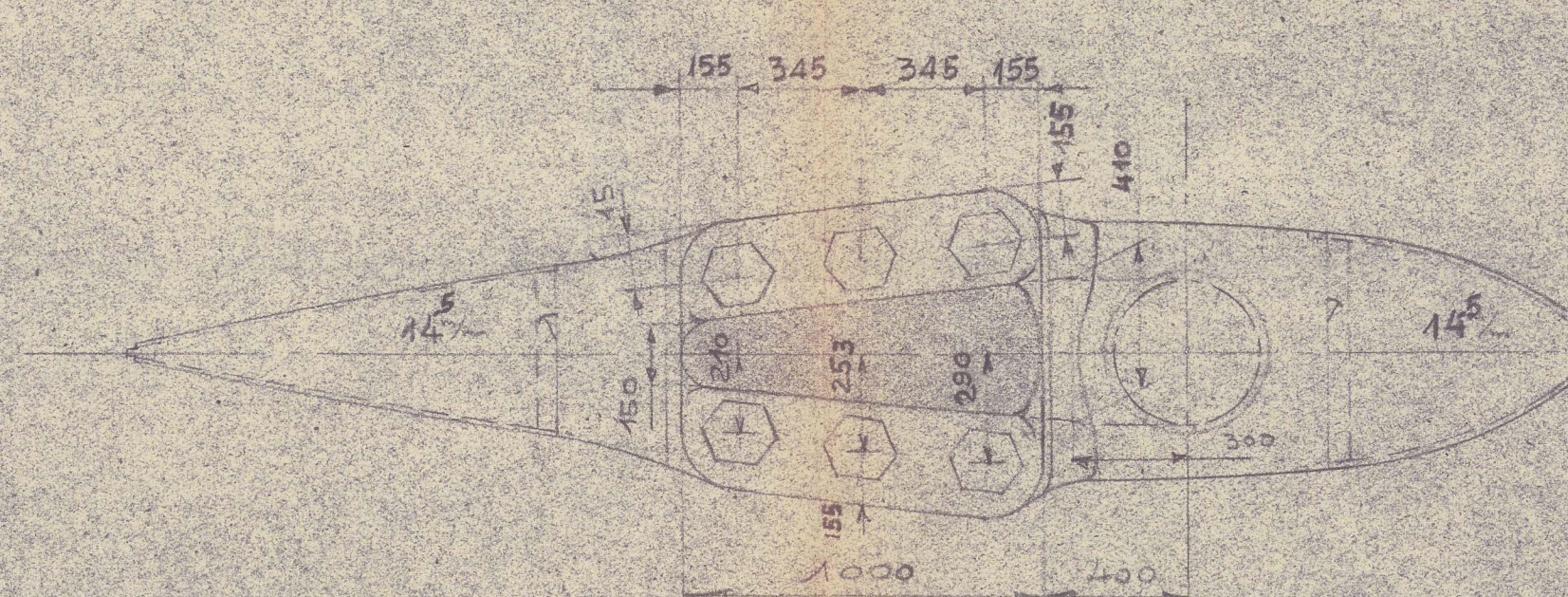


TIMONE VISTA ESTERNA.

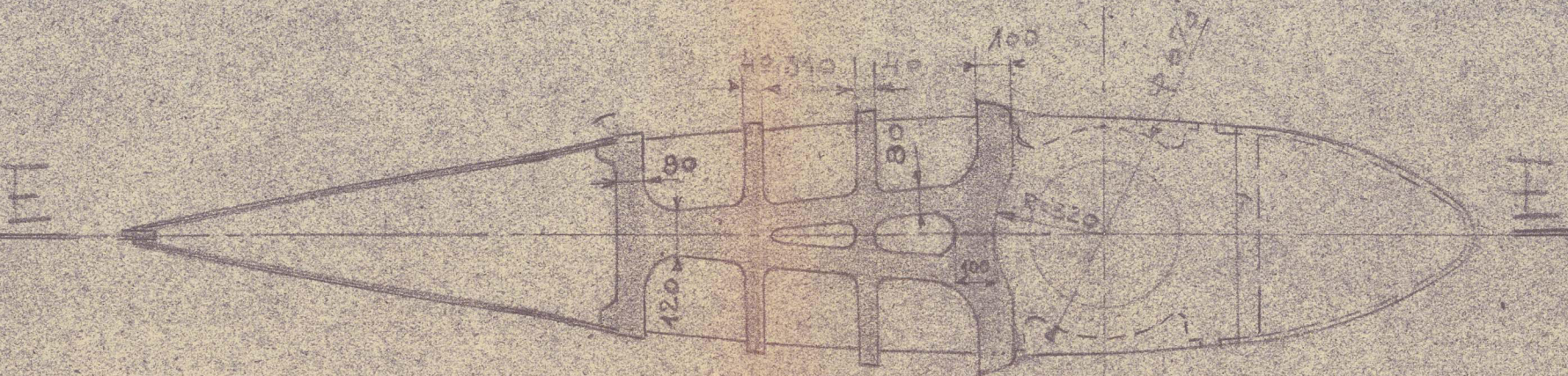
PROFILO TIMONE.



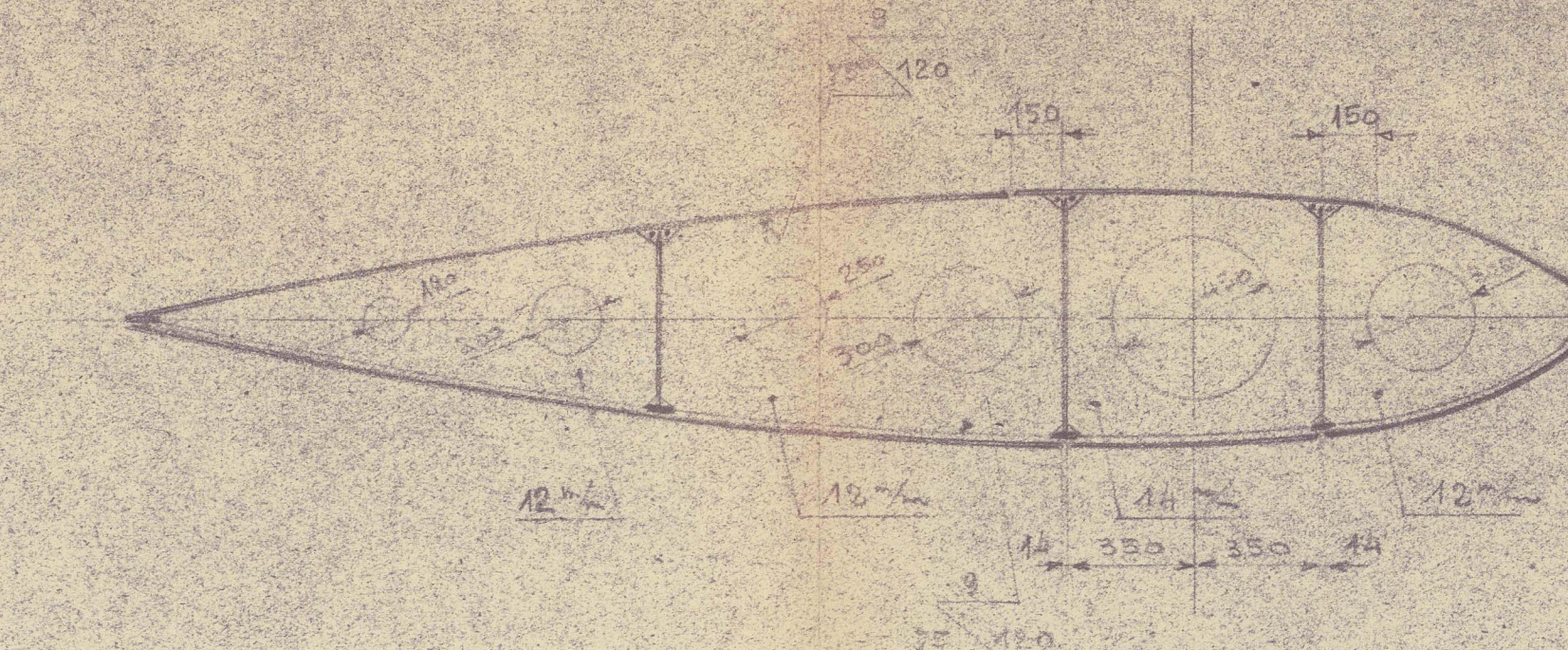
SEZIONE D-D



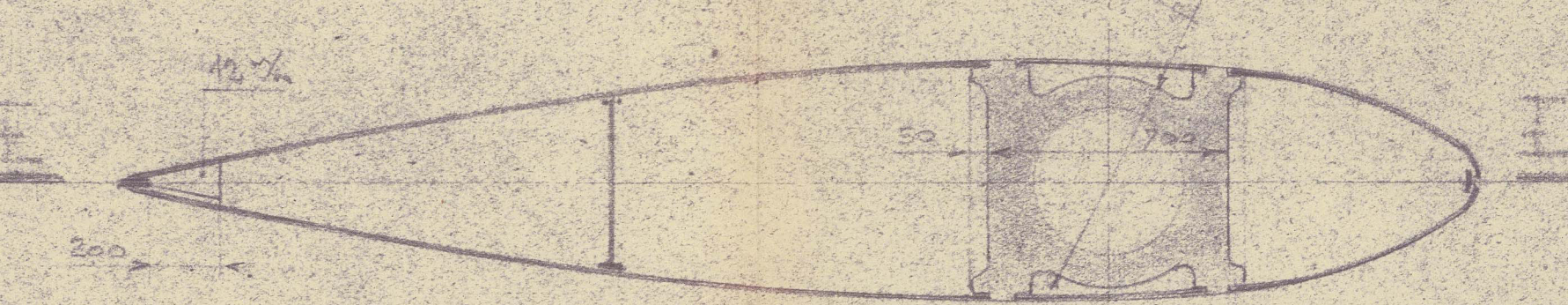
SEZIONE B-B



SEZIONE C-2

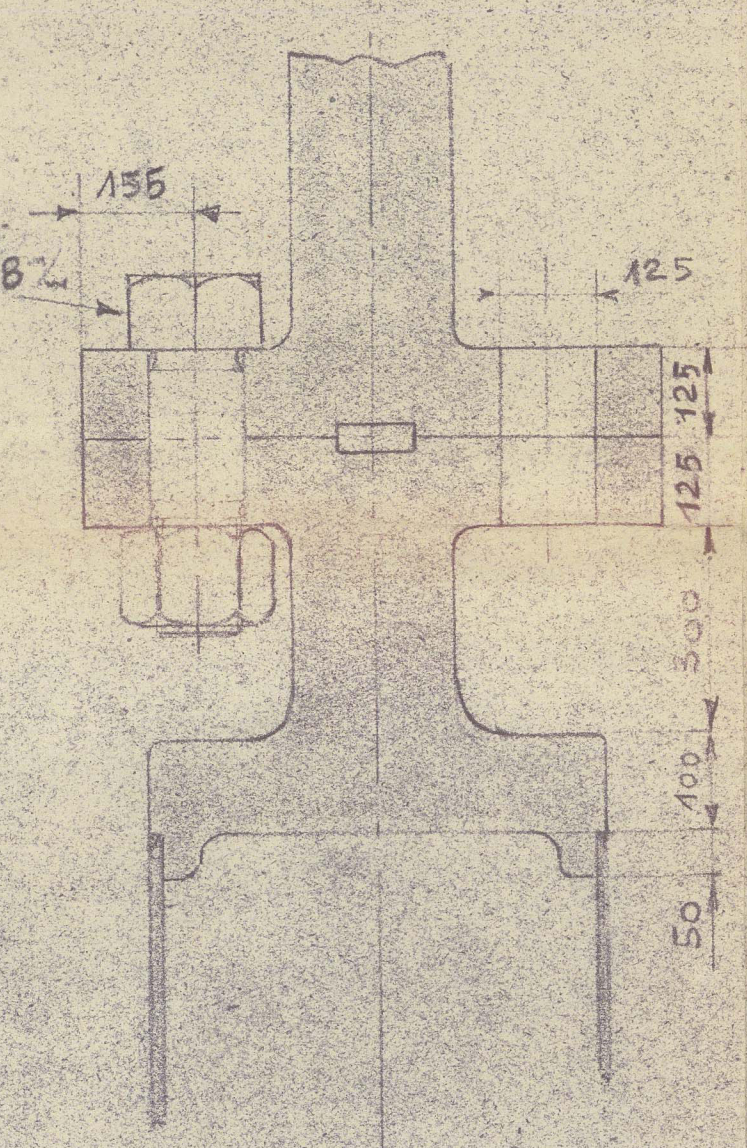
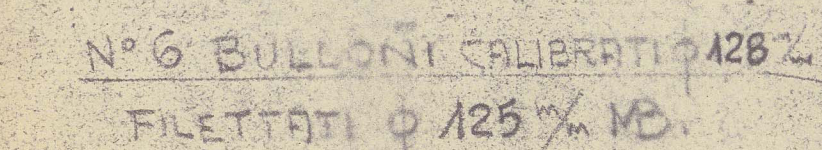


SEZIONE D-D



SEZIONE I-I

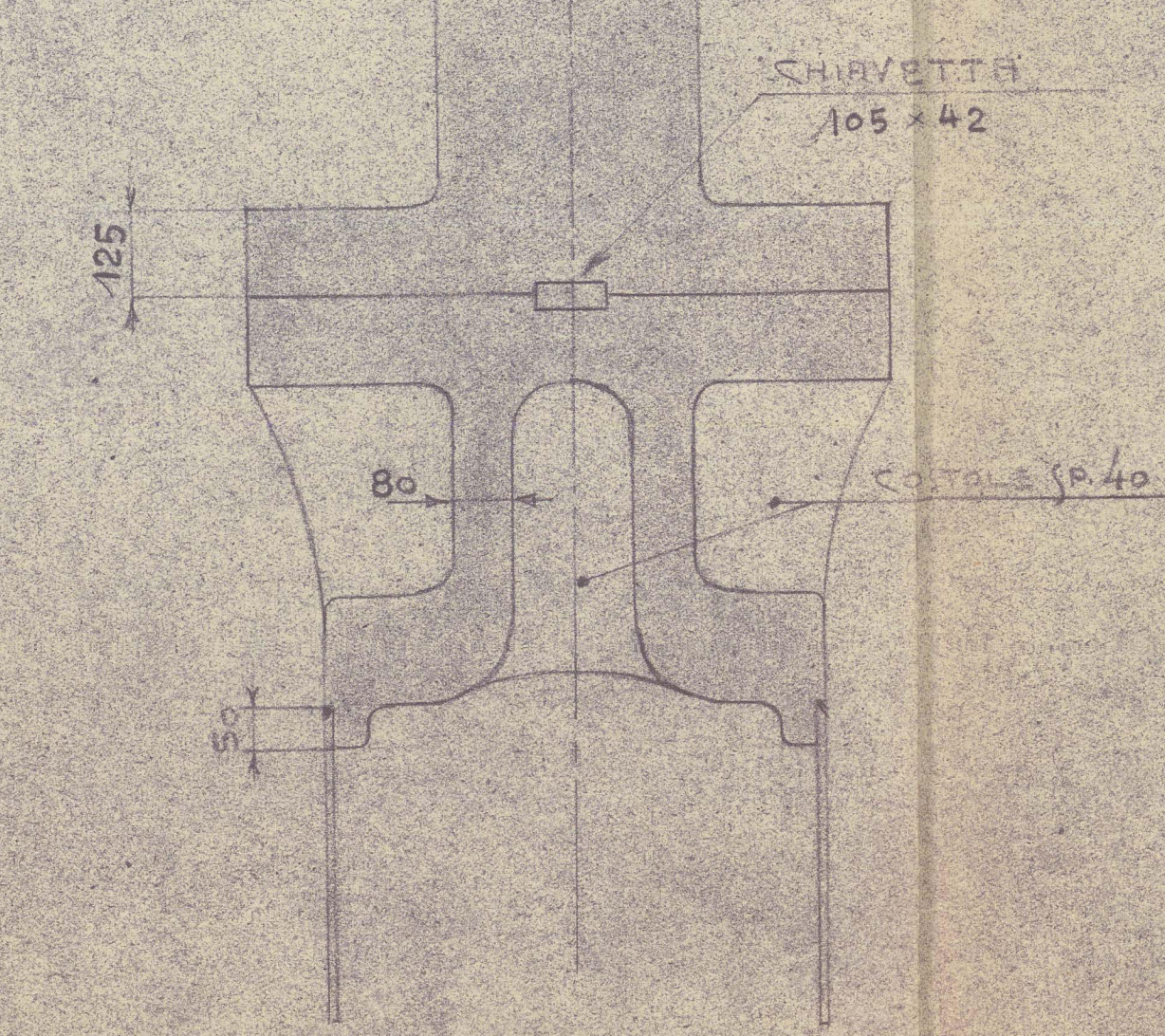
SEZIONE F-F



VELOCITÀ DI SERVIZIO $V = 15.7$ NDI.

$$S = 28.342 \text{ m}^2 - \int_{-R}^R 27.033 \text{ m}^3 = 955 \text{ pieft}^3$$

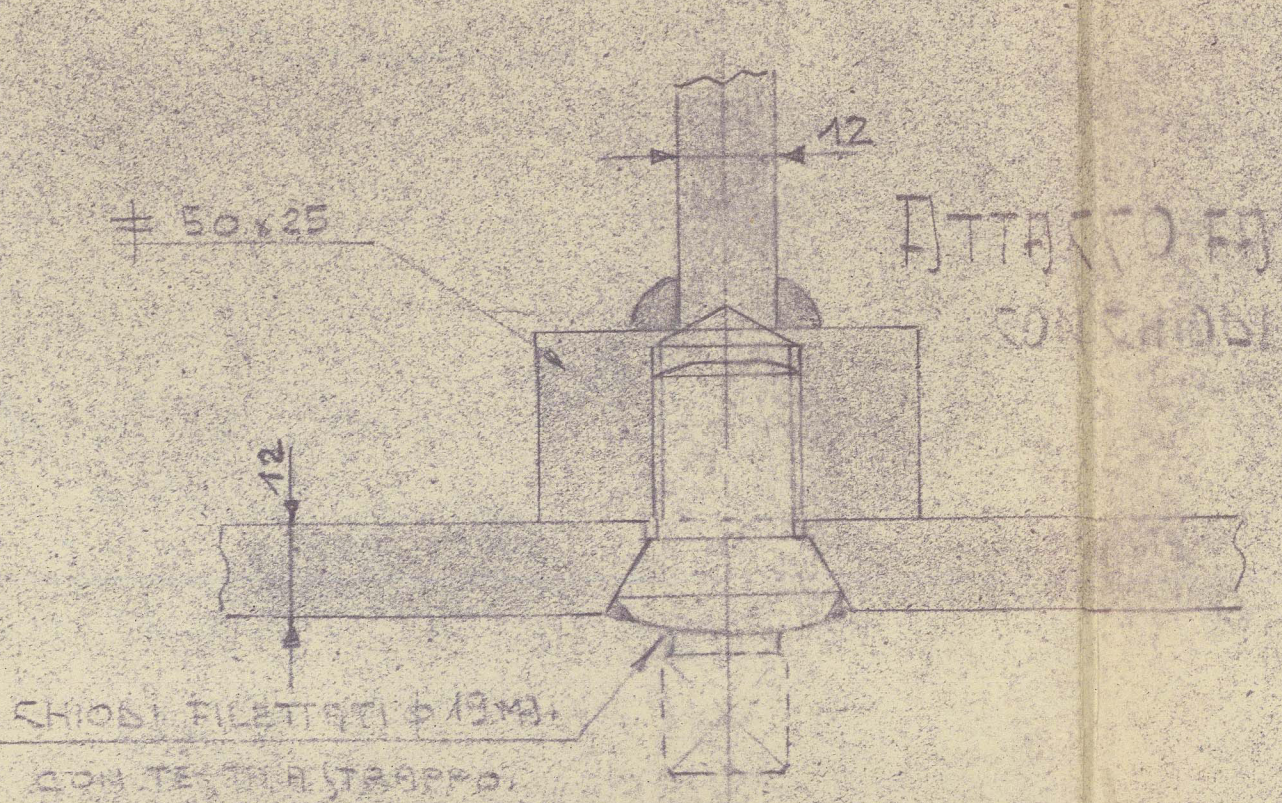
SEZIONE G-G



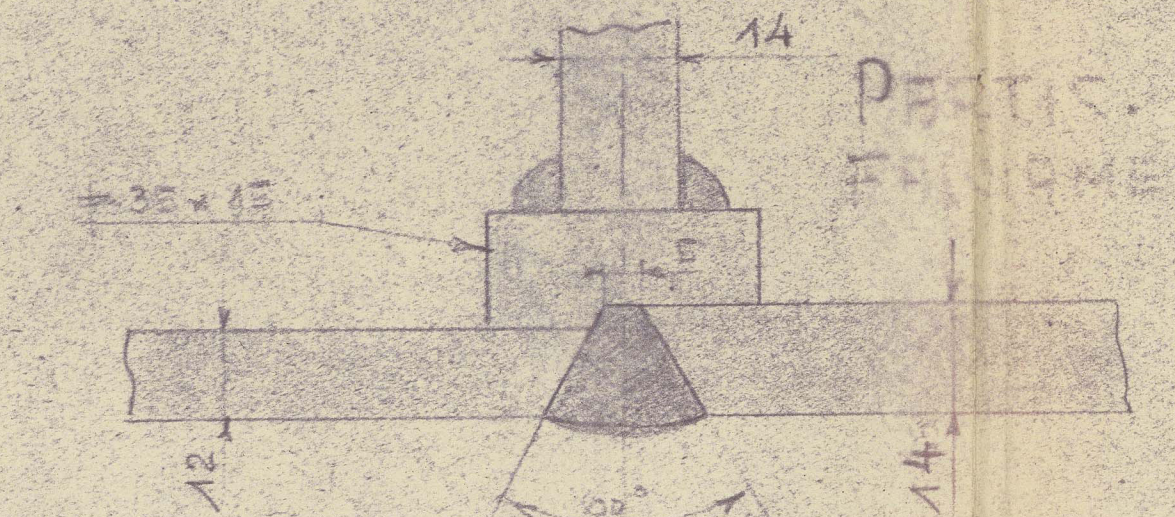
PARTICOLARE FINGLE PAPER 0 TIM

Materials to Society Requirements
and Tests.

Carbon Content of Castings
not to exceed .0.23%

ATTACHED TO SAME TIME
CONSIDER FILE THAT

14
PENTAC. JAL. EL



Certified copy as
afforded by Jawsa
Lumeyors on 4.8.52

12-9-52 AGGIORNATO SECONDO LE RICHIESTE DEI REGISTI

CANTIERE S. MARCO
- TRIESTE -
15 GEN 1954
UFF. TECNICO

1777 1/1031
1773
TIMONE
CLASSIFIED

120-1.10 10-VII-52
© 2011

★ MARE ADRIACUM

Cartina Rinnitelli Adriatico cart. n.º 1773

TRIESTE Mt. n.º 13965

Russell
as approved

RECORDS DEPT.,
LONDON.

7



© 2021

Lloyd's Register
Foundation

013186-013191-0078