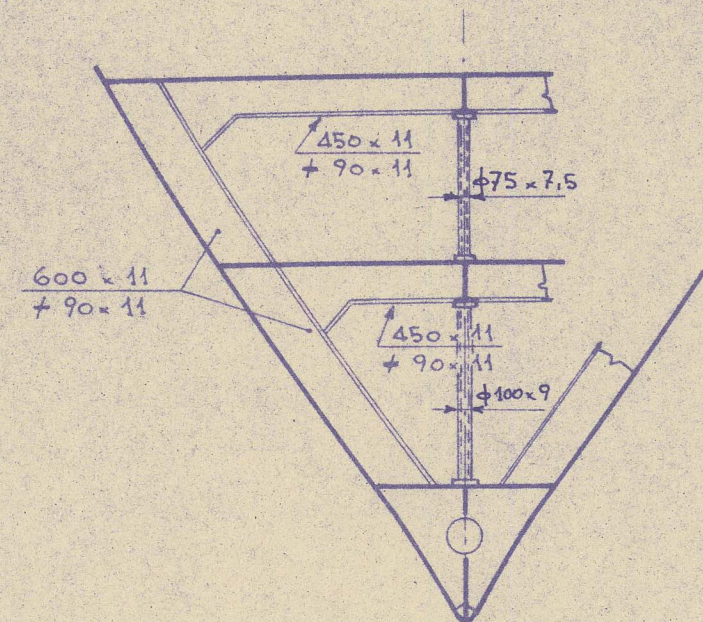
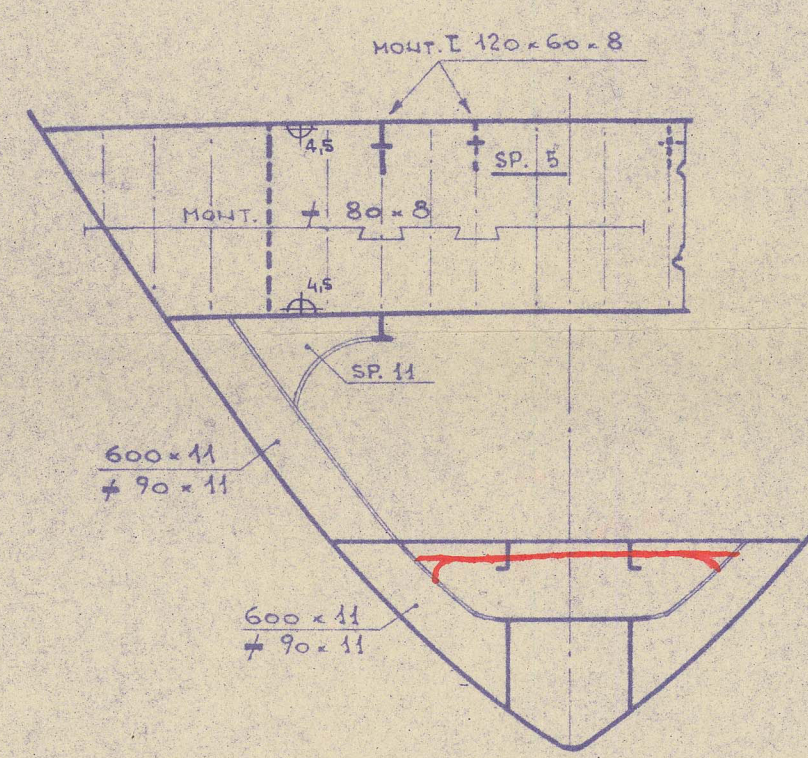


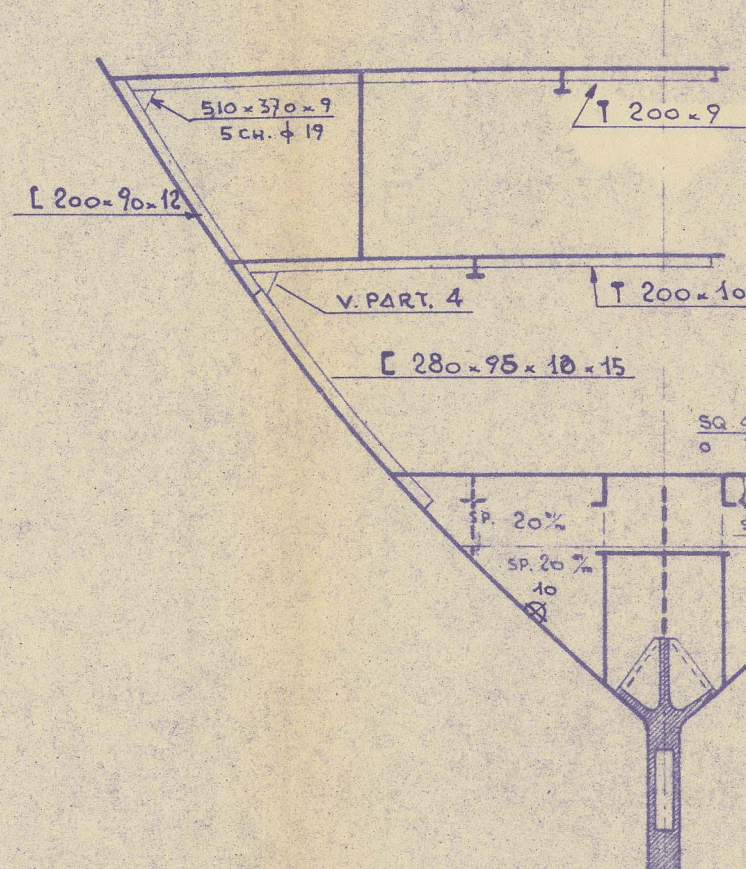
ORD. F
V. DA POPPA



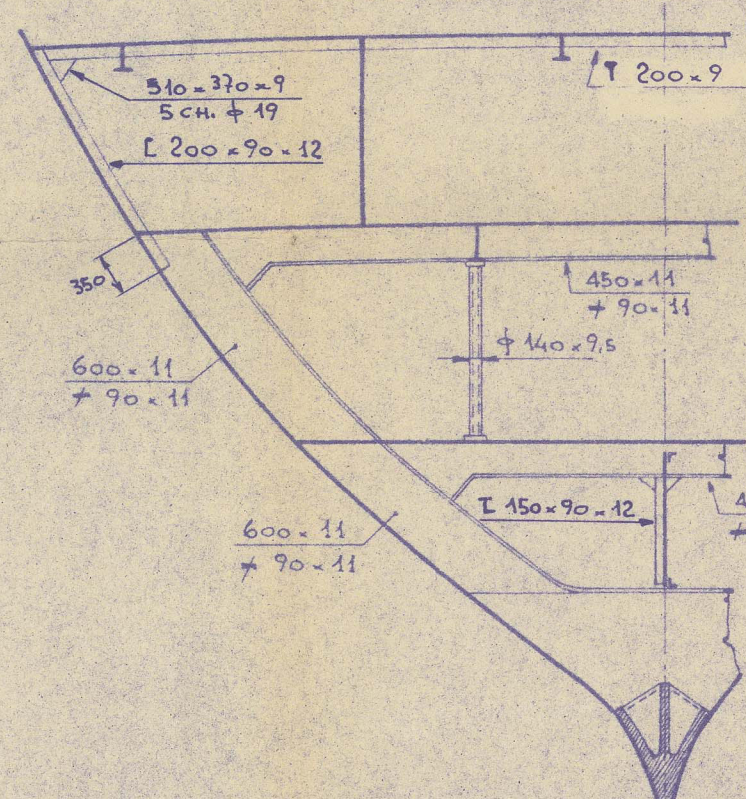
ORD. O
V. DA POPPA



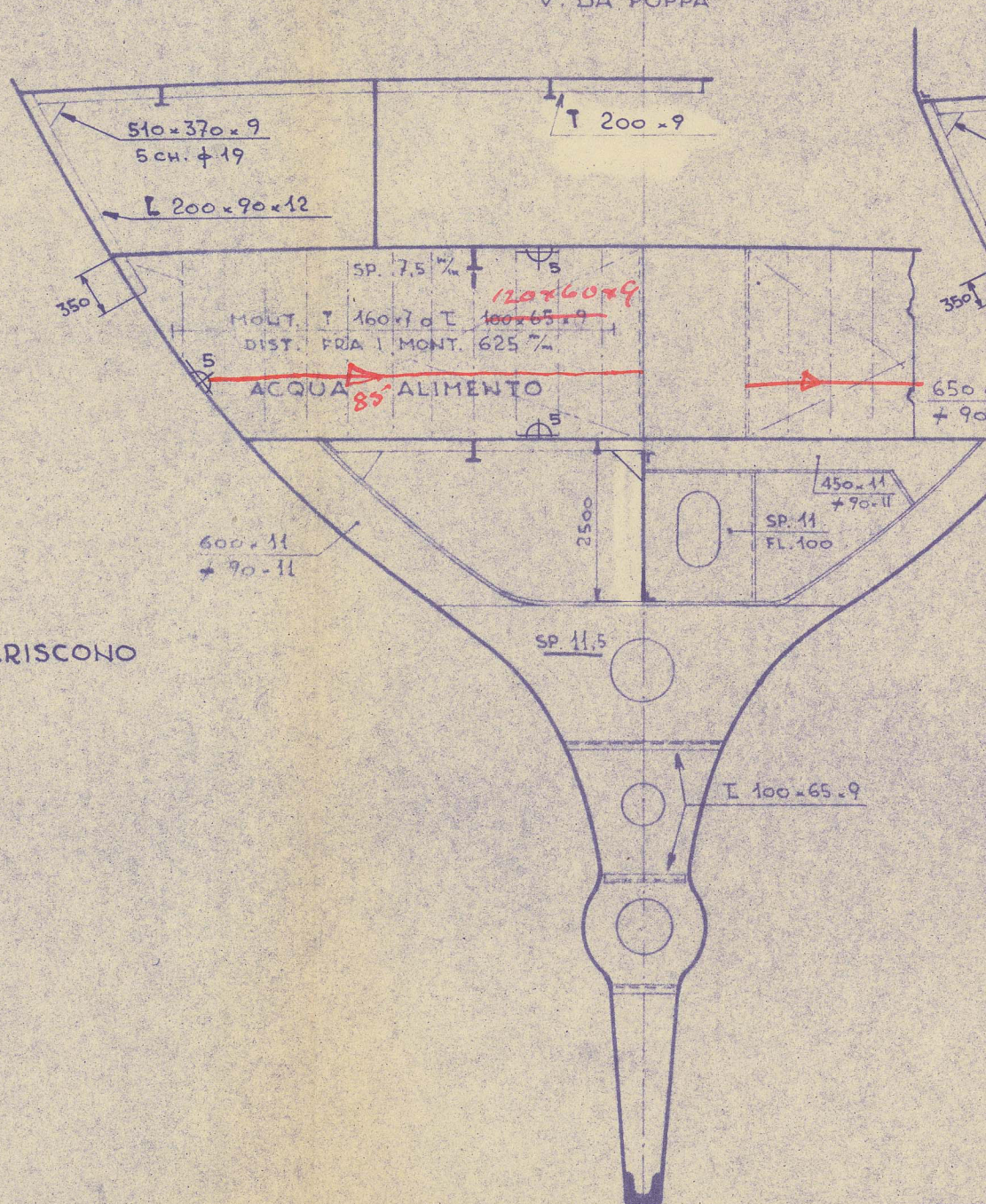
ORD. 1
V. DA POPPA



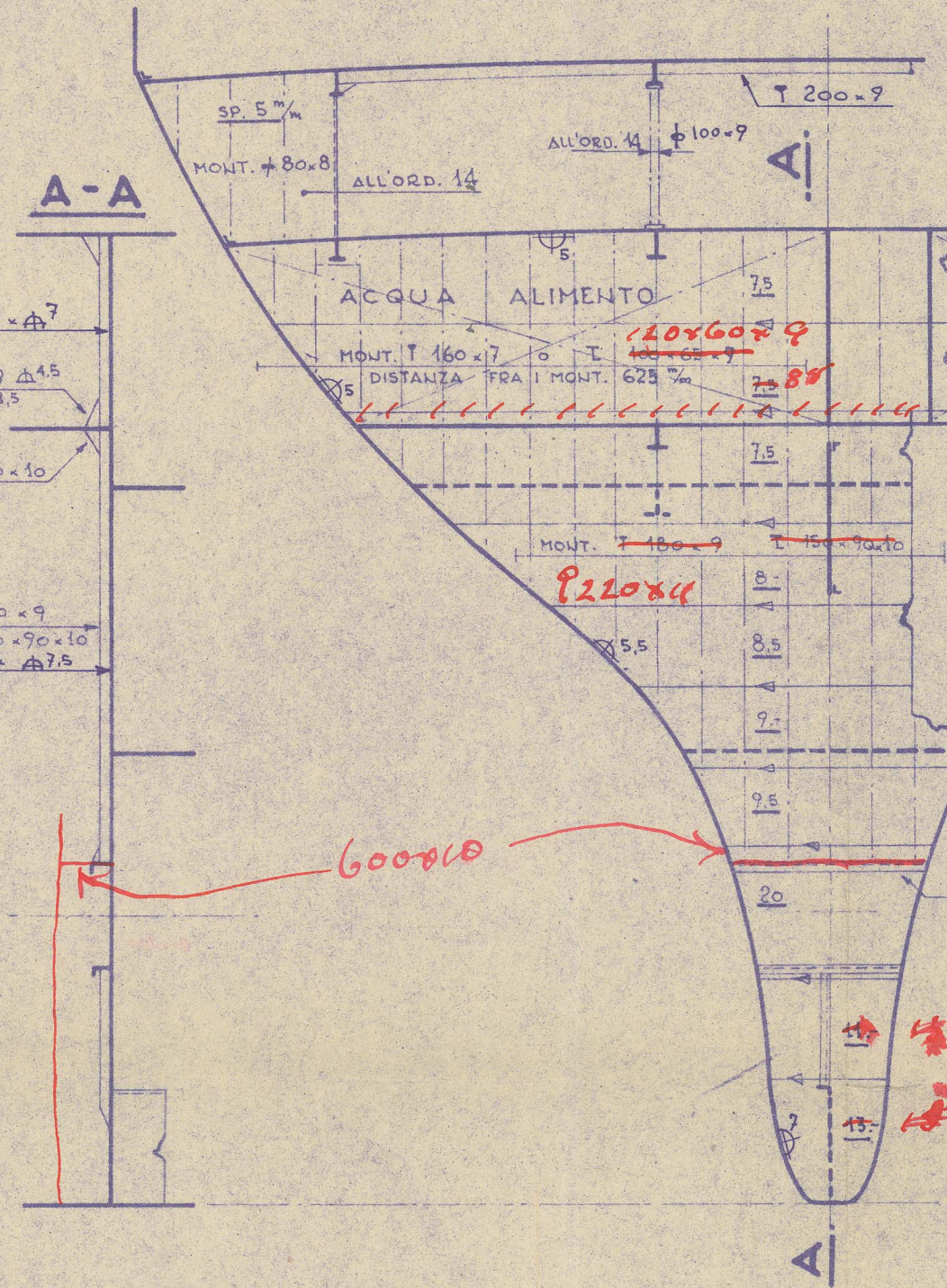
ORD. 5
V. DA POPPA



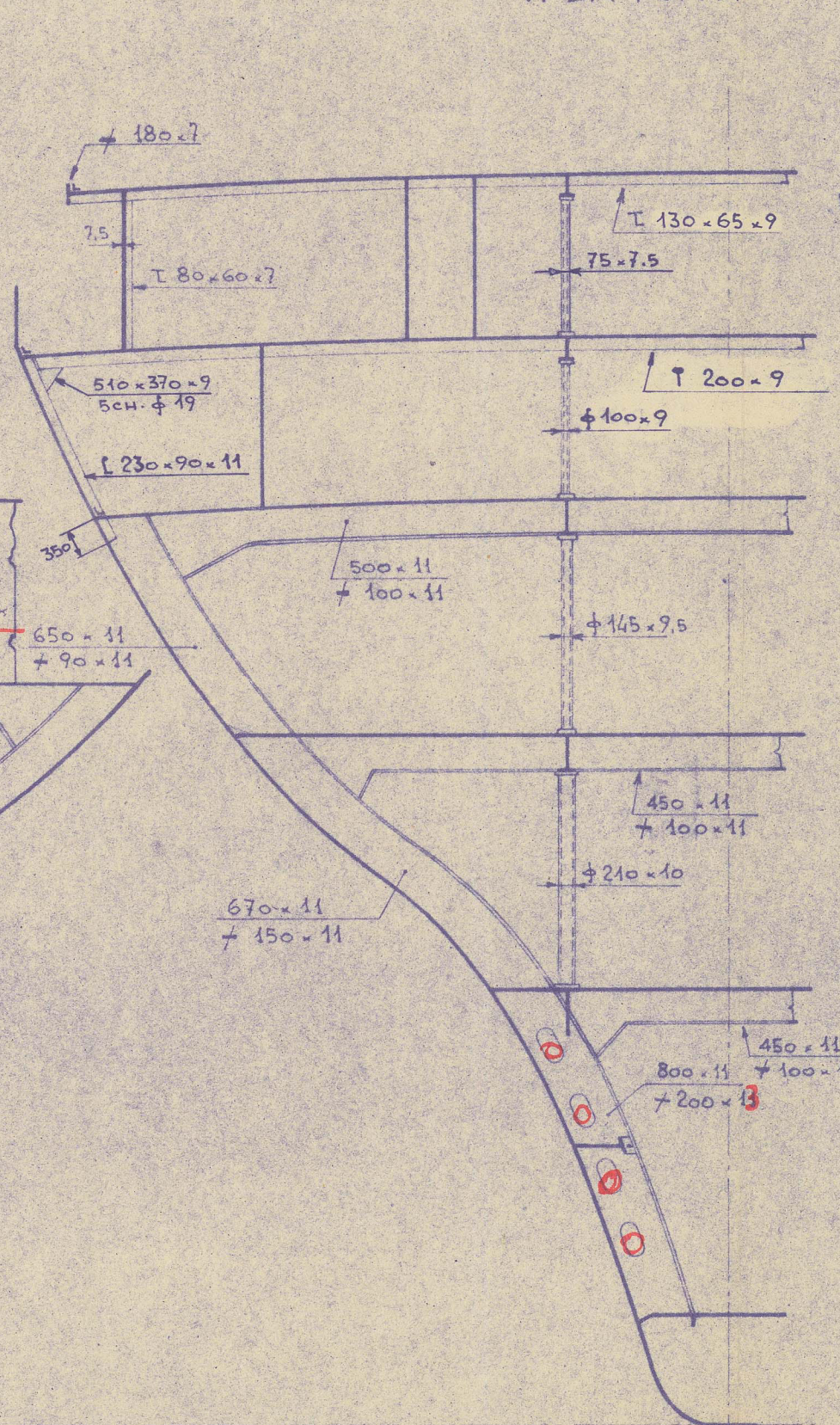
ORD. 9
V. DA POPPA



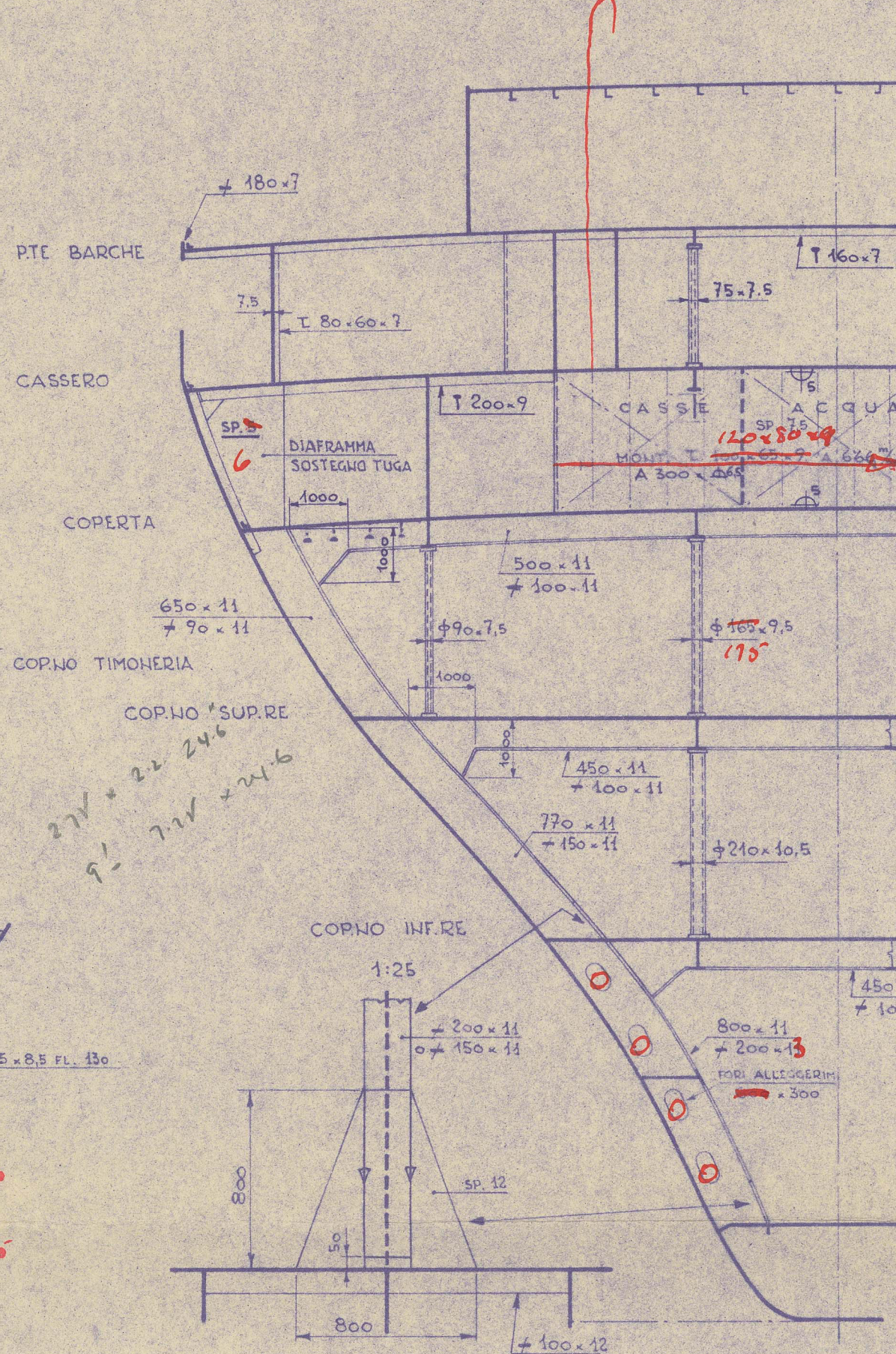
P.S. ORD. 13
V. DA POPPA



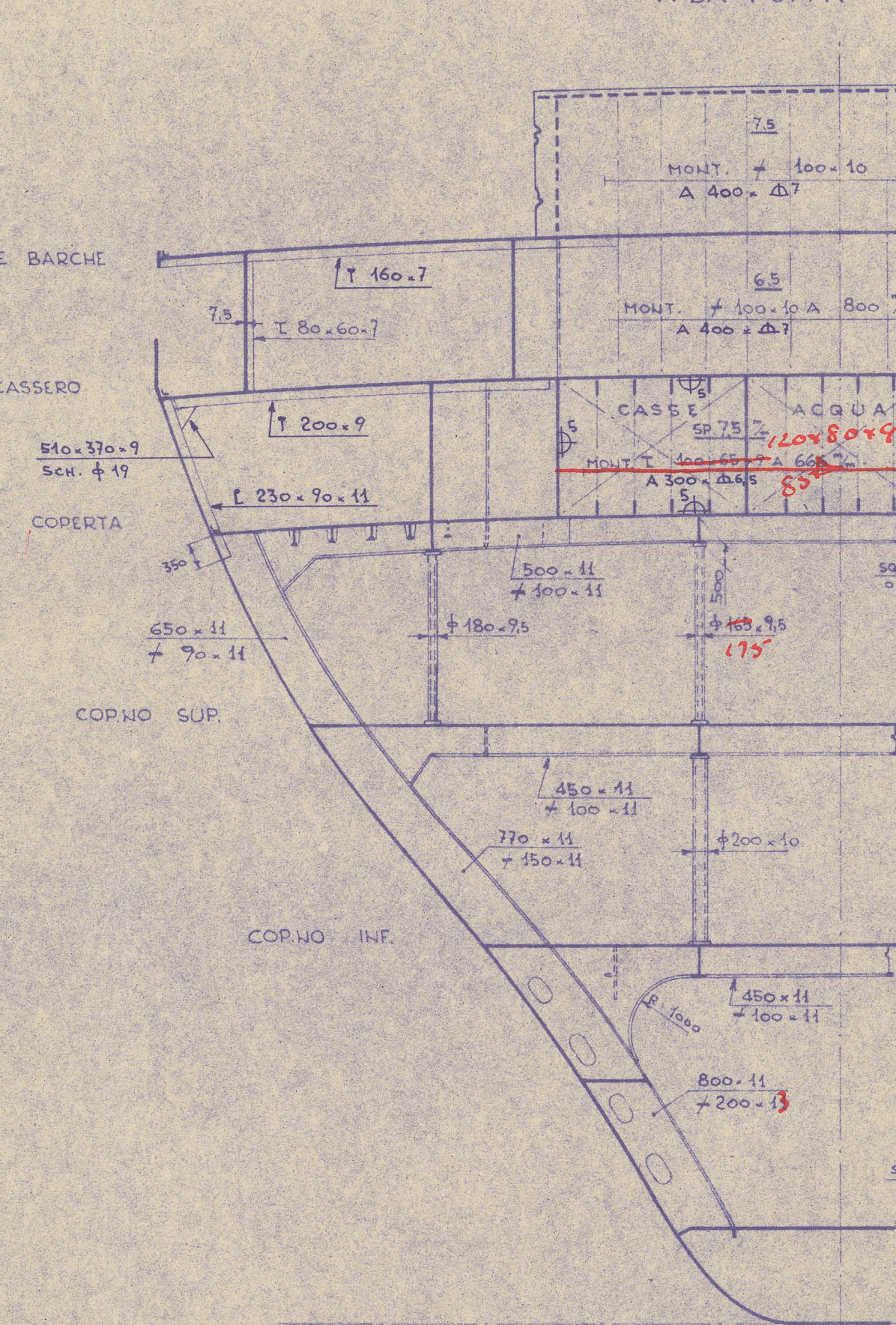
ORD. 18
V. DA POPPA



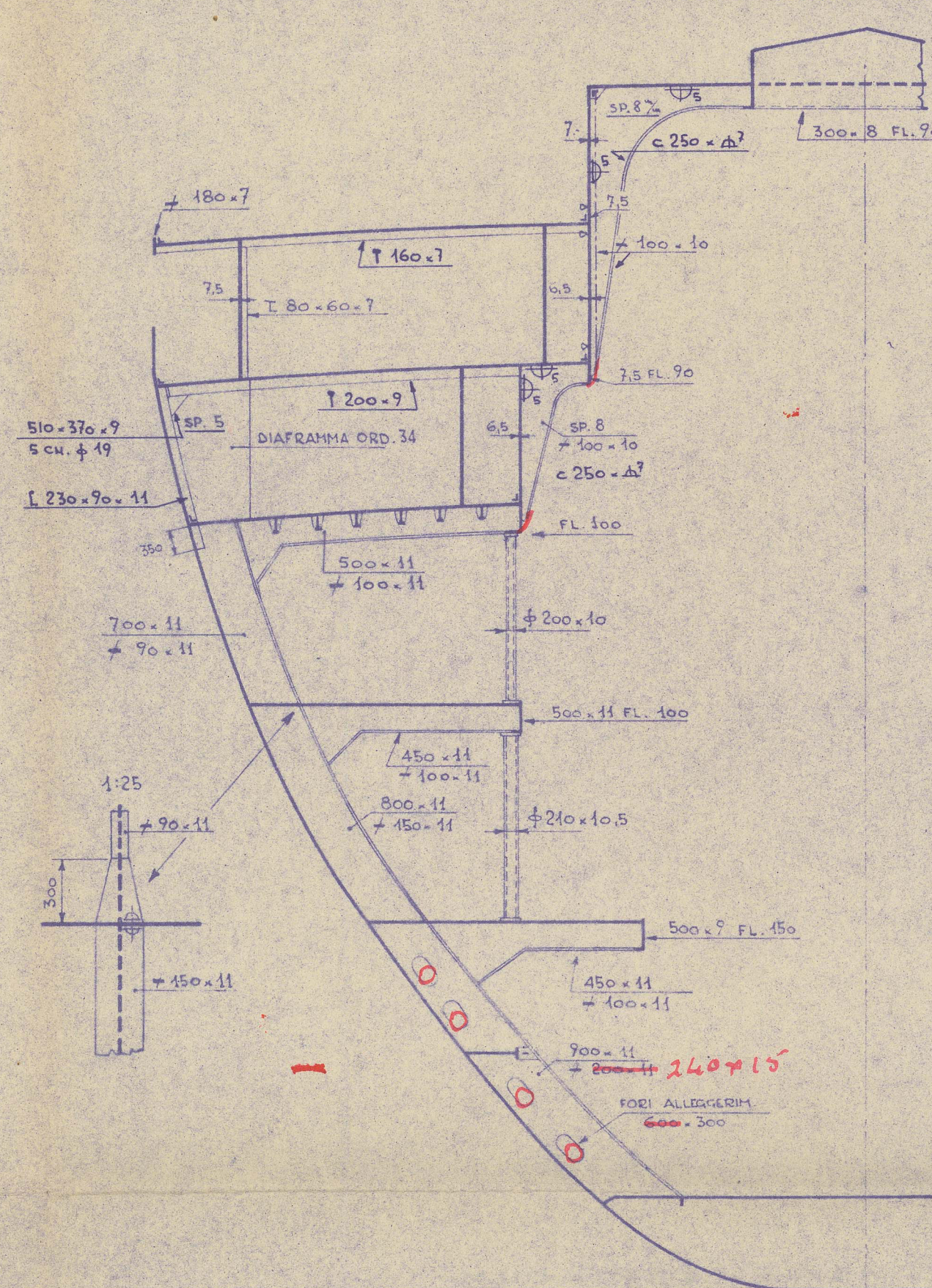
ORD. 22
V. DA POPPA



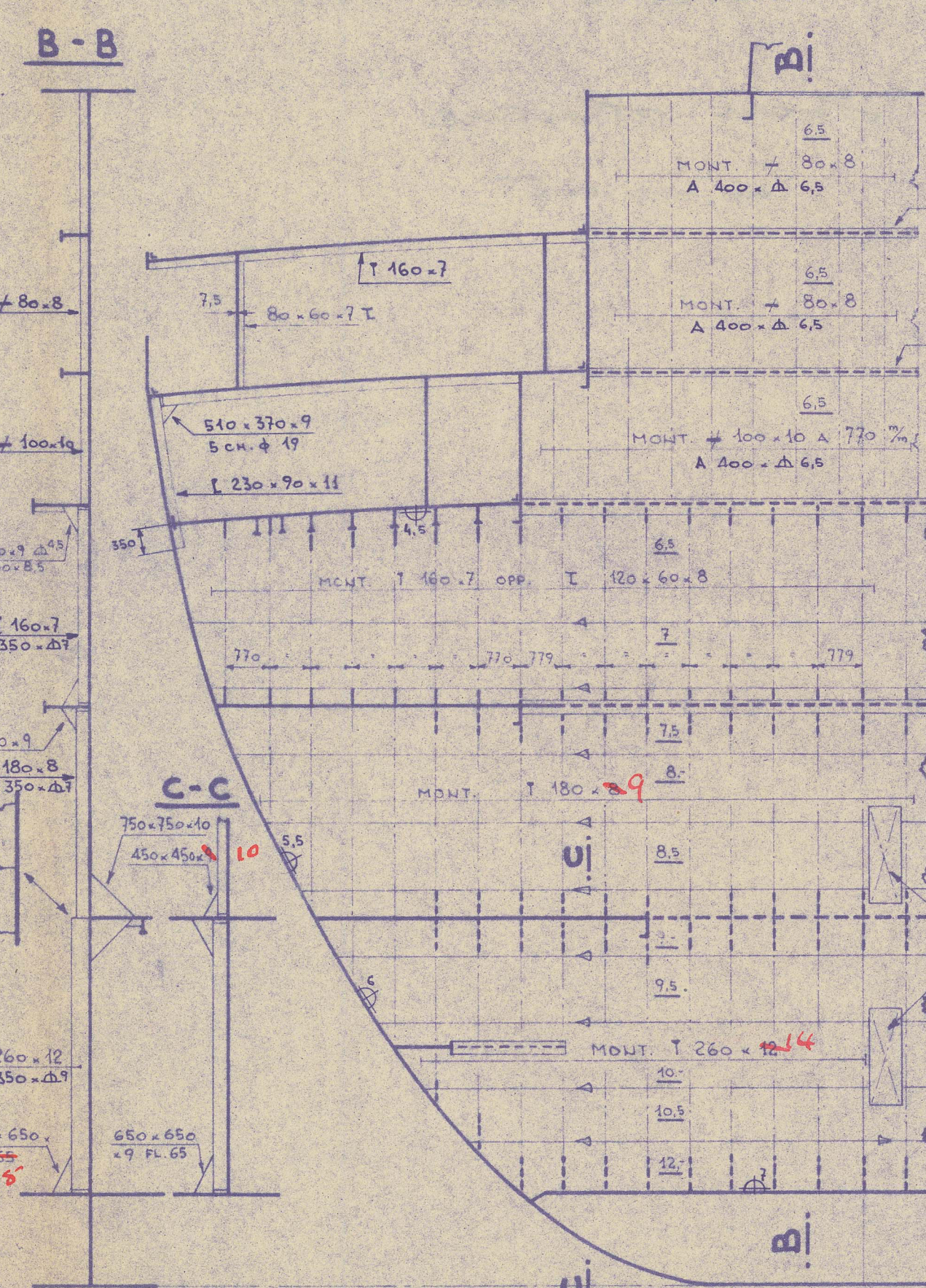
ORD. 26
V. DA POPPA



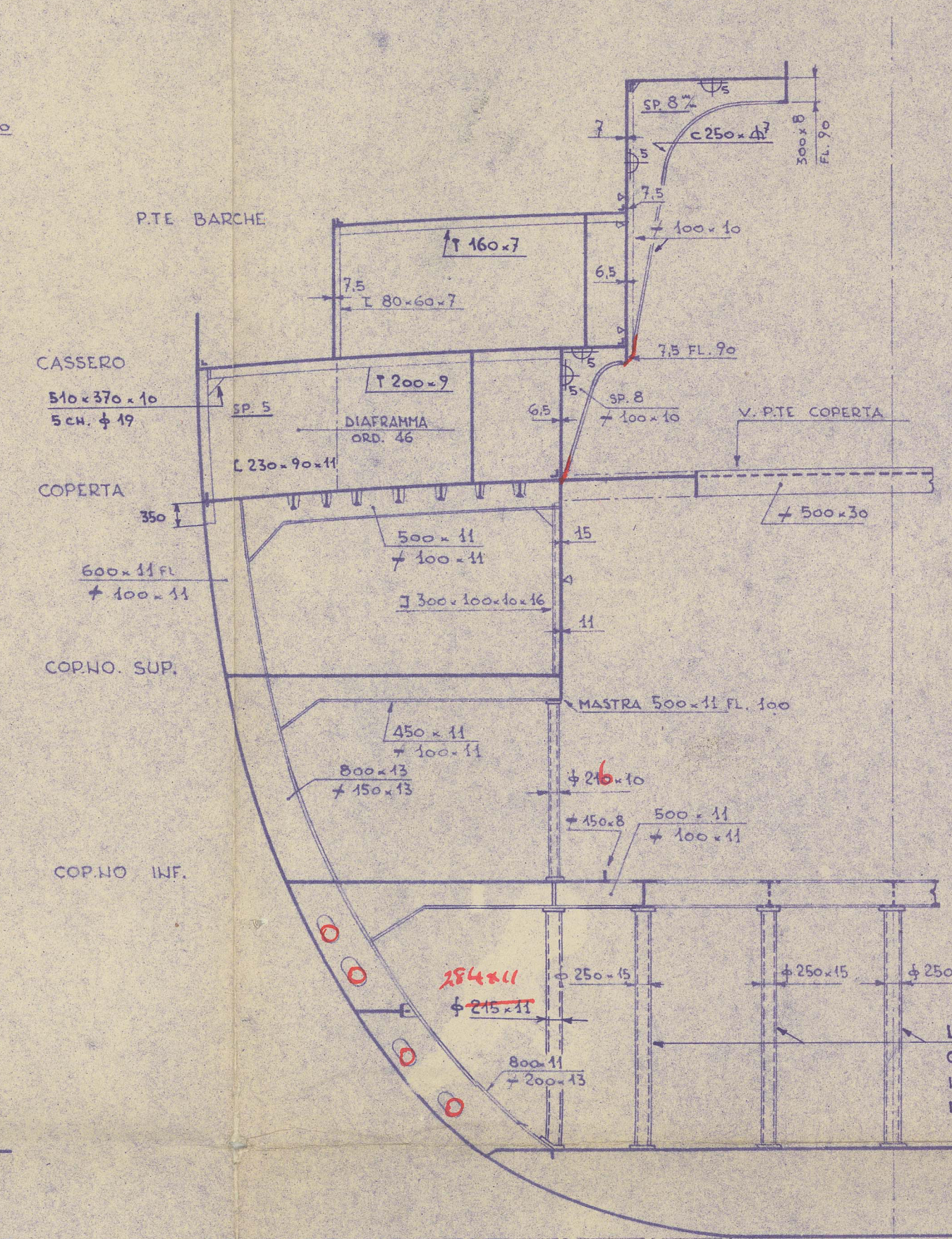
ORD. 36
V. DA POPPA



P.S. ORD. 40
V. DA POPPA



ORD. 48 (44)
V. DA POPPA

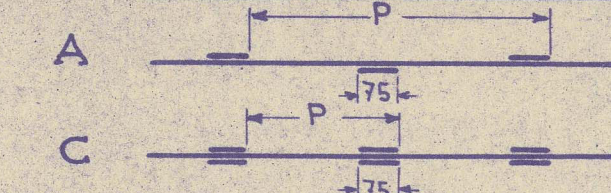


LA POSIZIONE DEFINITIVA DI QUESTI PUNTELLI SARA' STABILITA' IN RELAZIONE ALLE FONDAZIONI DELLE CALDAIE.

SALDATE

COSTOLONI: AL FASC. EST. A 250 x Δ 7.5
" AL PIATTO A 360 x Δ 7.5
BAGLIONI AL PONTE A 250 x Δ 8
" AL PIATTO A 350 x Δ 8

IB! I PASSI DELLE SALDATE VENGONO COSI' INTESI



LE QUOTE DI SALDATA SI RIFERISCONO ALL'ALTEZZA H DEL CORDONE.

17.

NOTA: This hullhead need not be left in place in case the scantlings may be reduced

OSSATURE COMUNI V. DIS. 1/19 (GIÀ APPROVATO)
SEZ. LONG. E. PONTI V. DIS. 1/36

CANTIERE SAN MARCO TRIESTE		1773
STRUTTURA DELLA POPPA SEZIONI TRASVERS.		1/37
99 x 54	SCALA 1:100	MARZO 1952

REGISTER OF SHIPS
APPROVED
24/3/52
GENOA

Lloyd's Register Foundation



MARE ADRIACUM"

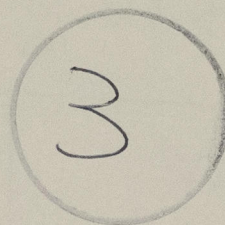
Cantieri Rinaldi Sella & C. Trieste 1773

TRIESTE 1773

Steel structure

as approved

RECORDS DEPT.
LONDON.



© 2021

Lloyd's Register
Foundation

013186-013191-0076