

LLOYD'S REGISTER OF SHIPPING

Index No. (For London Office only.)

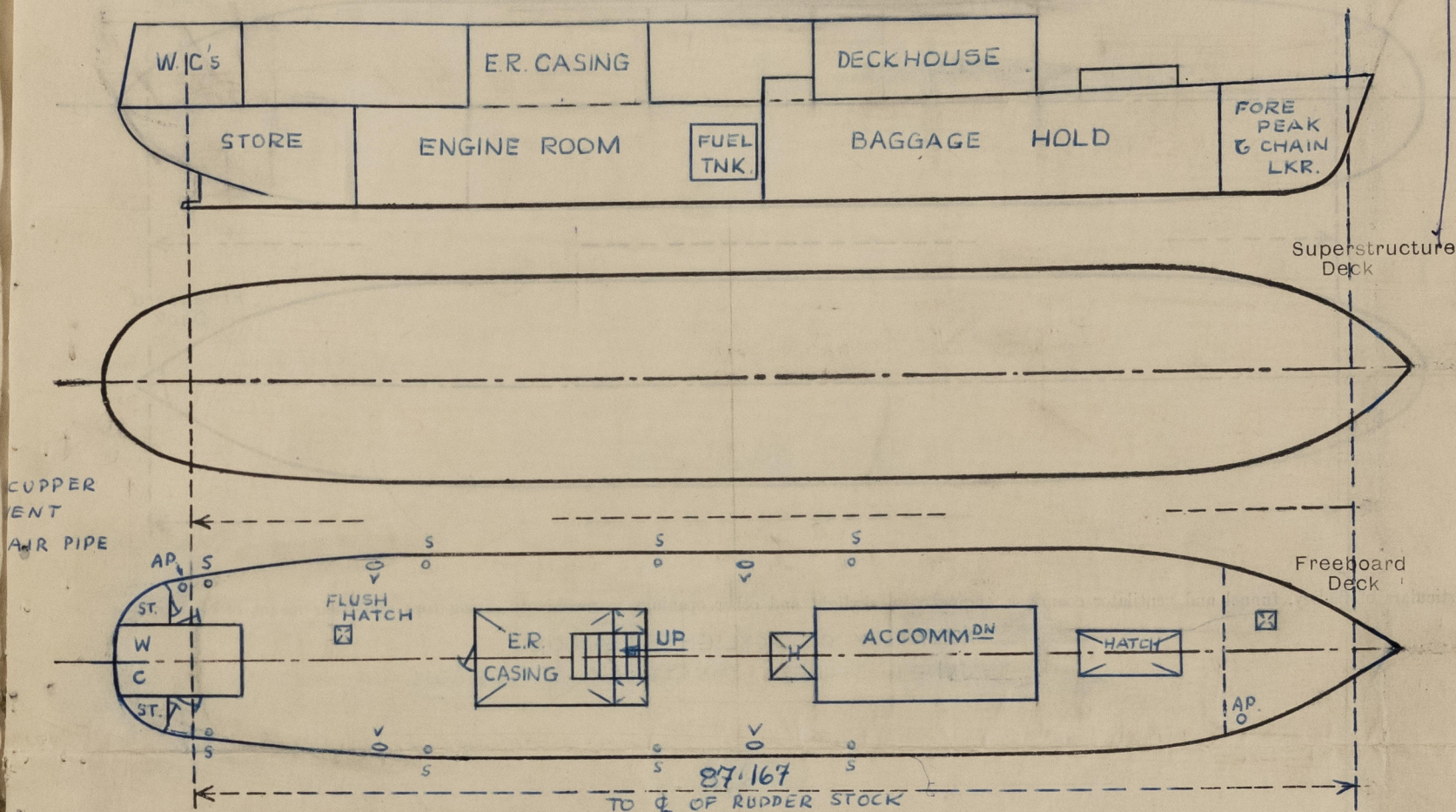
SURVEYS FOR FREEBOARD

(CONDITIONS OF ASSIGNMENT)

No. F. 1212

Ship's Name..... Port of Survey..... HAMBURG
Official Number..... Surveyor's Signature..... N. J. Bentley
Nationality and Port of Registry..... GHANA Date of Survey..... DURING CONSTRUCTION

Disposition and dimensions of superstructures, trunks, deckhouses, machinery casings and wood sheathing to be inserted in the diagrams and tabular statement :-

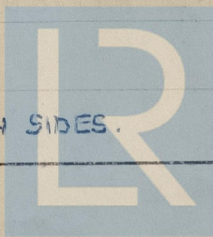


Particulars of Superstructures, Trunks, Casings, Deckhouses.

	Coaming	Plating	Stiffeners	Spacing	End Attachments of Stiffeners	Size of Openings	Height of Sills	Height, Beam to Beam
Poop Bulkhead								
Raised Quarter Deck Bulkhead ...								
Bridge, After Bulkhead								
Bridge, Forward Bulkhead								
Forecastle Bulkhead								
Trunk, Aft								
Trunk, Forward								
Exposed Machinery Casings on Freeboard or Raised Quarter Deck ...	4mm	4mm	50mm x 5mm F.B.	480mm	WELDED TOP SNIPED AWAY BOT.	1525 x 600	425mm	2250mm
Exposed Machinery Casings on Superstructure Decks								
Machinery Casings within Superstructures not fitted with Class I Closing Appliances								
Deckhouses and Pump Room Entrances	4mm	4mm	50mm x 5mm F.B.	450-500mm	WELDED TOP & BOTTOM	1750 x 600	200mm	2250mm

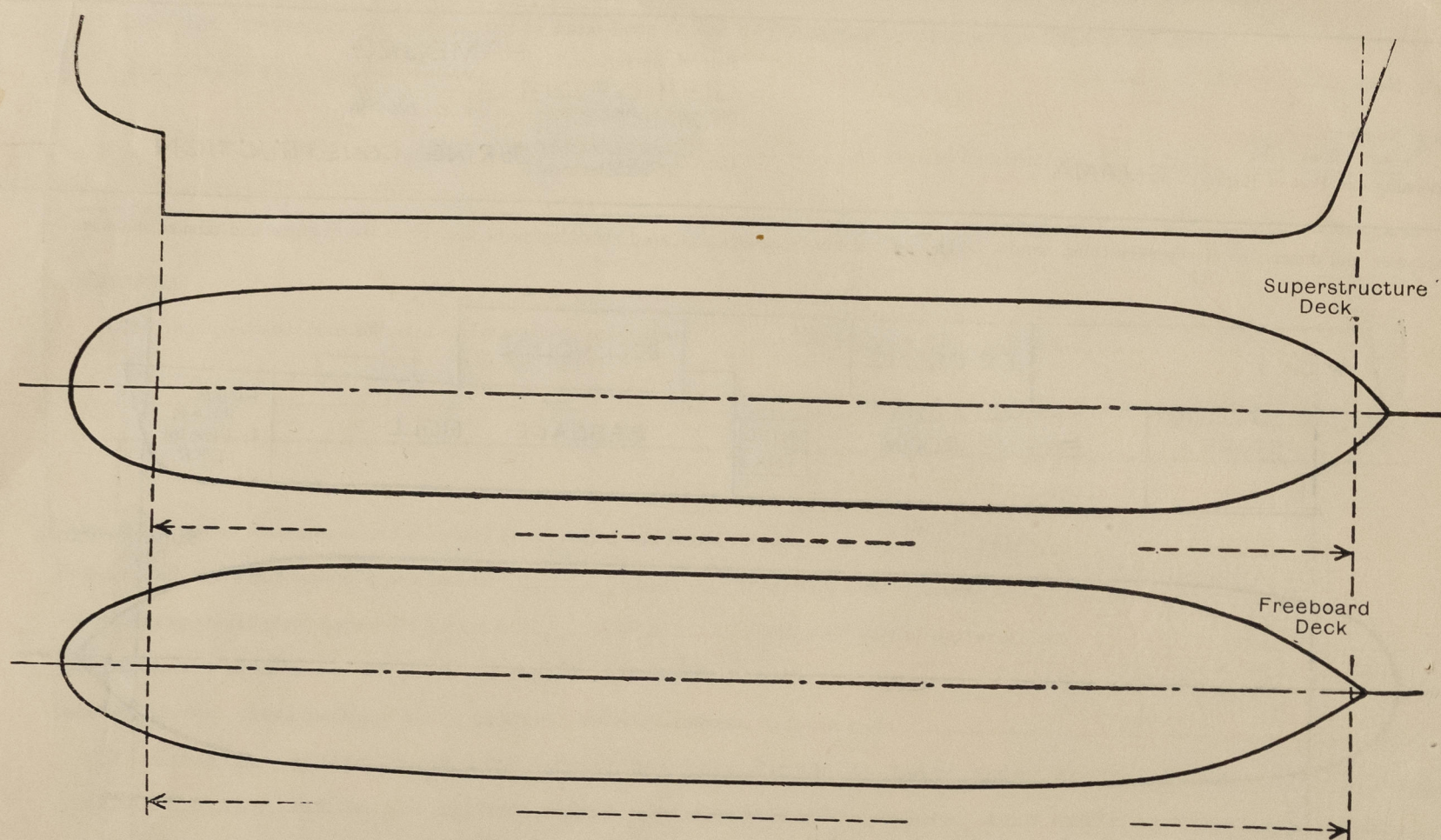
Particulars of Closing Appliances (state if capable of being manipulated from both sides).

Poop Bulkhead	
Raised Quarter Deck Bulkhead ...	
Bridge, After Bulkhead	
Bridge, Forward Bulkhead	
Forecastle Bulkhead	
Exposed Machinery Casings on Freeboard or Raised Quarter Decks ...	HINGED STEEL DOOR OPERABLE FROM BOTH SIDES.
Exposed Machinery Casings on Superstructure Decks	
Machinery Casings within Superstructures not fitted with Class I Closing Appliances	
Deckhouses and Pump Room Entrances	HINGED HARDWOOD DOOR OPERABLE FROM BOTH SIDES.



PARTICULARS OF PROTECTION TO OPENINGS, ETC.

The following diagrams should be used to indicate the positions of cargo and coaling hatchways, gangway, cargo and coaling ports, side scuttles, scuppers, ventilators, companionways, etc., which would affect the seaworthiness of the ship :—



Particulars of fiddle, funnel and ventilator coamings, engine room skylight and other openings in machinery casing tops and their means of closing :—

NO FIDDLEY OR SKYLIGHT OPENINGS
FUNNEL STONGLY CONSTRUCTED OF STEEL

Particulars of Flush Bunker Scuttles :—

Particulars of Companionways :—
(including those incorporated in deckhouses and masthouses)

ENTRANCE TO MACHY SPACE 1525 x 600 HINGED STEEL DOOR
425mm SILL. DOOR OPERABLE FROM BOTH SIDES

Particulars of Ventilators in exposed positions on freeboard and superstructure decks :—

GOOSENECK VENTS TO MACHY SPACE 160mm x 85mm (2P & 2S) COAMINGS 400mm HIGH
6mm THICK. CLOSED BY HINGED STEEL FLAPS.
2 COWL VENTS TO E.R. (IP & IS) SITUATED ON AWNING TOP AND TRUNKED THRO' TO ENGINE ROOM.
COAMINGS 400mm HIGH & 190mm DIA. 5mm THICK

Particulars of Air Pipes in exposed positions on freeboard, raised quarter, or superstructure decks :—

FORE PEAK SPACE 55mm dia. COAMING 530mm HIGH 5mm THICK (STARBD)
AFTER " " " " " " " " (PORT)
BUNKER TANK 75mm DIA. COAMING 600mm HIGH 6mm " (CENTRE)
BUNKER AIR PIPE FITTED WITH FLASH GAUZE

Particulars of Gangway Cargo and Coaling Ports :—

NONE

Particulars of Scuppers and Sanitary Discharge Pipes :—

1- AFT 80mm DIA. SANITARY DISCHARGE FROM AFTER TOILETS.
1- AMID. " " " " " " " " (STARBD)
DISCHARGES ABOVE LOAD WATERLINE - NOT FITTED WITH STORM VALVES.

8- SCUPPERS (4P & 4S) DRAINING UPPER DECK THRO SHIPS SIDE. 60mm DIA.

Particulars of Side Scuttles and Deadlights :—

NONE BELOW UPPER DK.

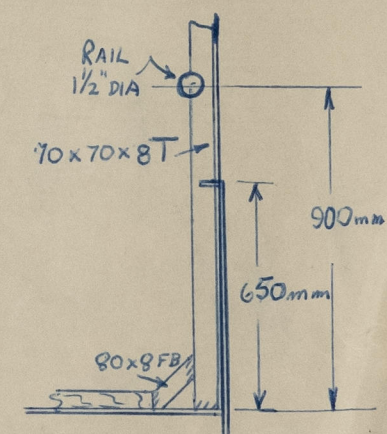
Vertical distance of Sill of lowest Side Scuttle above top of keel
Distance from amidships to centre of lowest Side Scuttle

Particulars of Guard Rails and Bulwarks :—

BULWARK ON UPPER DK.
HEIGHT 650 mm
PLATING 4mm WITH TOP RAIL OF 50 x 65mm F.B.
STAYS 70 x 70 x 8 'T' BAR. SPACED 2 METRES APART.

Particulars of Gangways, Lifelines, etc. :—

NONE



Particulars of Freeing Arrangements.

	Length of Bulwark	Height of Bulwark	Size of Freeing Ports	Number each side	Area each side	Rule area each side
After Well ...	91'-0 1/2"	650 mm	NONE SCUPPERS FITTED AS ABOVE	/	/	/
Forward Well ...						

State position of each freeing port ... After Well :—
(F. and A. position and height above deck edge) Forward Well :—

State whether the freeing ports are fitted with shutters, bars, or rails, and give particulars of such :—

Additional area where sheer is less than standard.

PARTICULARS OF PROTECTION TO OPENINGS, ETC.

HATCHWAYS ON FREEBOARD AND SUPERSTRUCTURE DECKS.									
Description of Hatchway		BAGGAGE		BAGGAGE		HATCH TO		HATCH TO	
		HATCH FOR		HATCH AFT		CHAIN LKR		STORE AFT	
Dimensions of Hatchway		2000 x 1000		920 x 1000		480 x 380		690 x 620	
COAMINGS	Height above Deck	...	400 mm	...	400 mm	...	50 mm	...	
	Thickness	{ Sides	6	{ Sides	6	{ Sides	6	FLUSH	
		{ Ends	6	{ Ends	6	{ Ends	6		
	Stiffeners	...	—	...	—	...	—		
	Brackets, Stays	{ Sides	—	{ Sides	—	{ Sides	—		
	{ Ends	—	{ Ends	—	{ Ends	—			
HATCH BEAMS	Number	
	Spacing	
	Scantling and Sketch	...	/	...	/	...	/	...	/
	Bearing Surface	
FORE AND AFTERS	Number	
	Spacing	
	Unsupported Lengths	
	Scantling* and Sketch	...	/	...	/	...	/	...	/
	Bearing Surface	
HATCH COVERS	Material	...	WOOD	...	WOOD	...	STEEL	...	WOOD
	Thickness	...	40 mm	...	40 mm	...	6 mm	...	40 mm
	How fitted	...	SLAB	...	SLAB	...	HINGED	...	SLAB
	Bearing Surface	...	60 mm	...	60 mm	...	—	...	60 mm
Spacing of Cleats		...	/	...	/	...	/	...	/
Number of Tarpaulins		...	/	...	/	...	/	...	/
*Are wood fore and afters steel shod at all bearing surfaces? <input checked="" type="checkbox"/>									
Are battens and wedges efficient and in good condition? NONE FITTED									
Are tarpaulins in good condition and in accordance with rule requirements? NON SUPPLIED									
Are lashings provided in accordance with rule requirements? LOCKING BAR SUPPLIED FOR EACH BAGGAGE HATCH ONLY									
Are wood covers fitted with galvanised end bands? NO									

Particulars of any special features :— (Timber Deck-cargo Fittings, Skylights, Sewage Systems, Ash Ejectors, Rubbish Shoots, etc.)



© 2021

Lloyd's Register
Foundation