

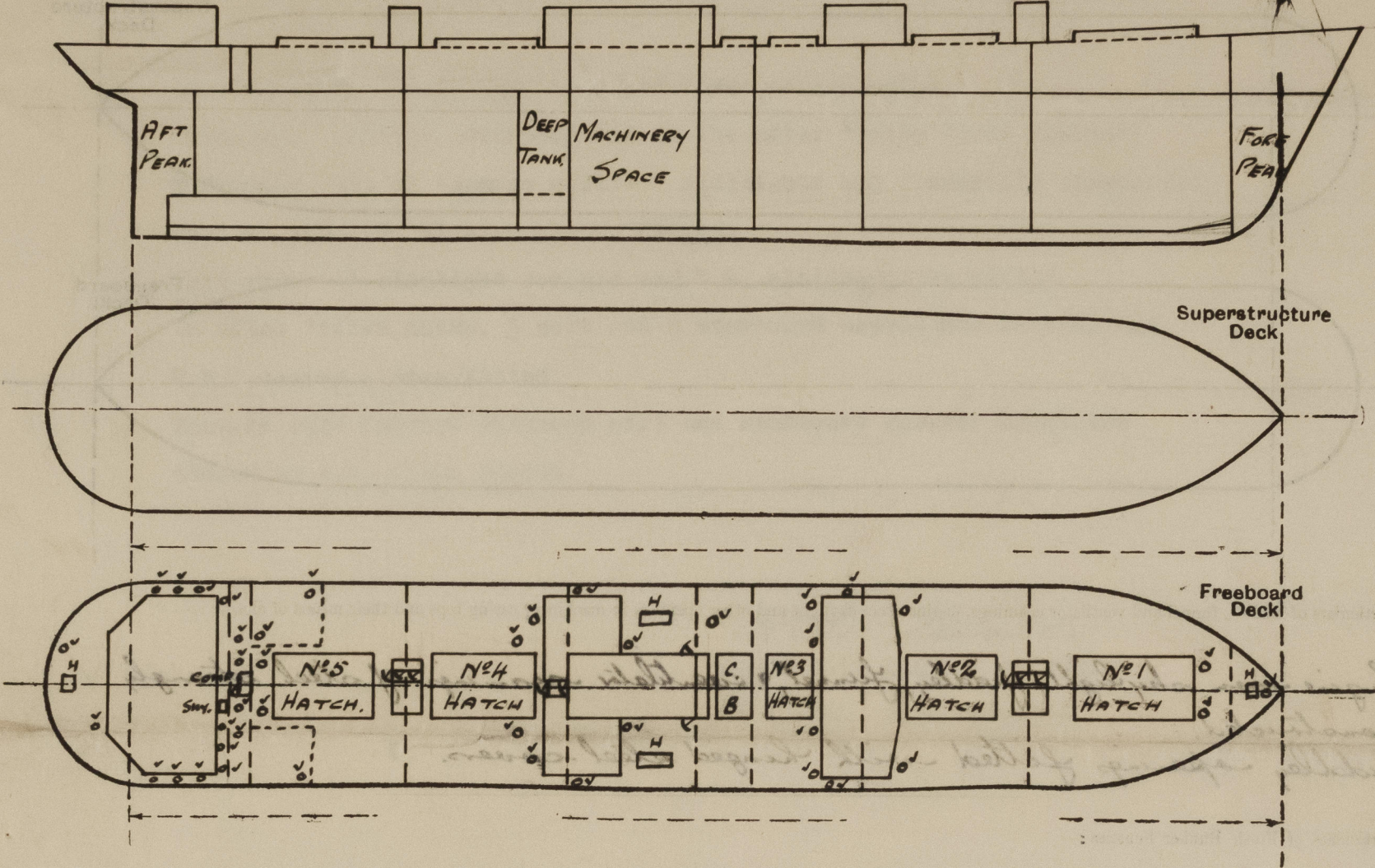
Lloyd's Register of Shipping.

Index No. 37031
(For London Office only).

SURVEYS FOR FREEBOARD. N° 33511
(CONDITIONS OF ASSIGNMENT.)

Ship's Name SS. MIDDLESEX TRADER. ANKER Port of Survey Sunderland
Official Number 168343. Surveyor's Signature W. E. Lulla
Nationality and Port of Registry British Sunderland Date of Survey During Construction
Netherlands. Rotterdam

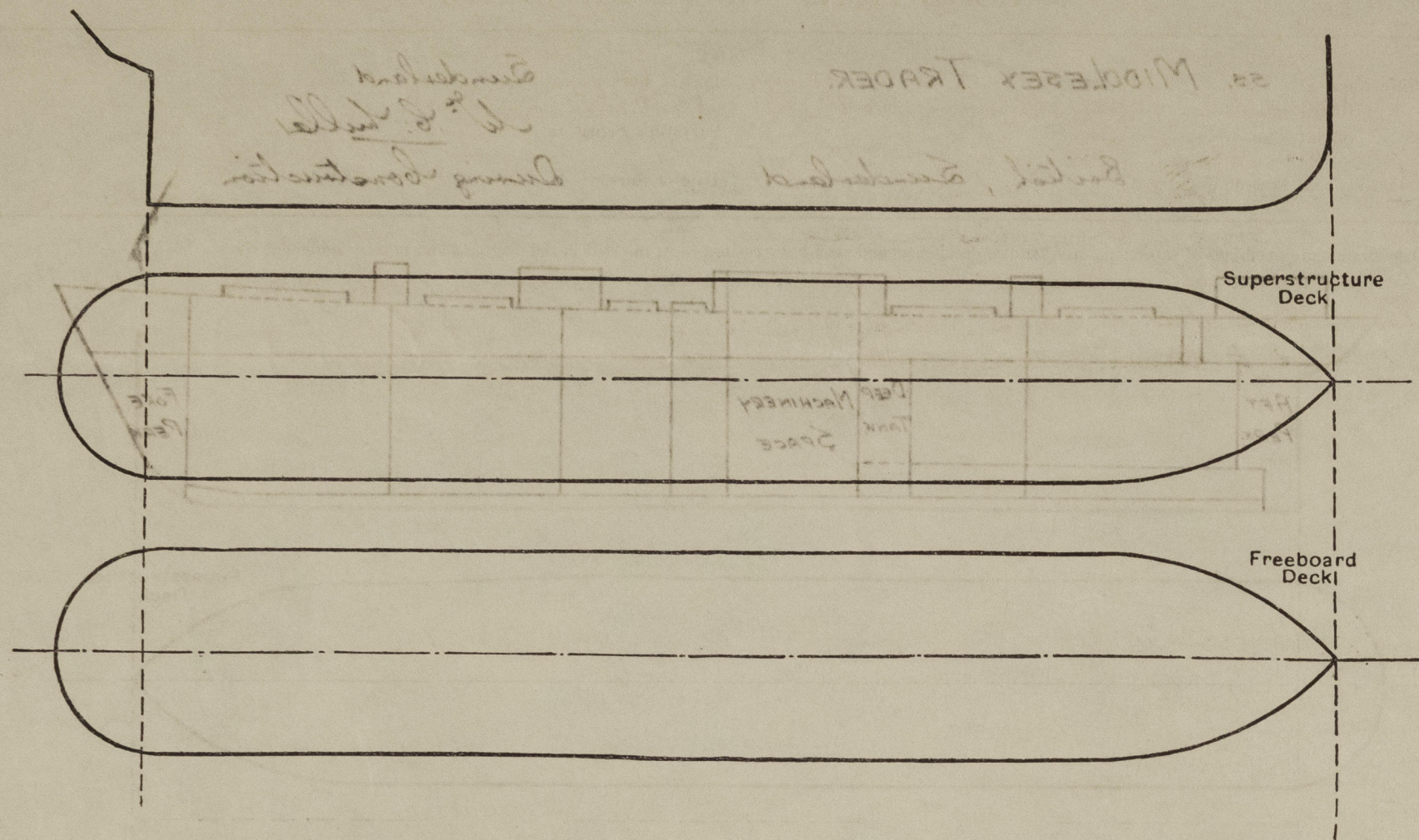
Disposition and dimensions of superstructures, trunks, deckhouses and machinery casings to be inserted in the diagrams and tabular statement : --



Particulars of Superstructures, Trunks, Casings, Deckhouses.								
	Coaming	Plating	Stiffeners	Spacing	End Attachments of Stiffeners	Size of Openings	Height of Sills	Height of Casings
Deep Bulkheads In Tween Decks	Carried up W.T. to freeboard deck. ✓							
Raised Quarter Deck Bulkhead ...		✓						
Bridge, After Bulkhead ...		✓						
Bridge, Forward Bulkhead ...		✓						
Forecastle Bulkhead ...		✓						
Trunk, Aft ...		✓						
Trunk, Forward ...		✓						
Exposed Machinery Casings on Freeboard or Raised Quarter Deck ...	34"	30"	3" x 3" 5/16"	30"	Continuous	5'0" x 2'0"	24"	✓
Exposed Machinery Casings on Superstructure Decks ...		✓						
Machinery Casings within Superstructures not fitted with Class I Closing Appliances ...	34" & 30"	34" & 30"	5" x 3" 5/16" OA 3" x 3" 5/16" OA.	30"-36"	Butt.	5'0" x 2'0"	18" ✓	7'6" ✓
Deckhouses on Flush Deck Ships ...	Aft. 30"	30"	3" x 3" 5/16"	24"-42"	do.	5'0" x 2'0"	24" ✓	7'6" ✓
Particulars of Closing Appliances (state if capable of being manipulated from both sides).								
Deep Bulkheads In Tween Decks	No openings except in No. 93 Bld, which has 2 openings closed by hinged steel W.T. doors, with packing & 10 toggles. ✓							
Raised Quarter Deck Bulkhead ...		✓						
Bridge, After Bulkhead ...		✓						
Bridge, Forward Bulkhead ...		✓						
Forecastle Bulkhead ...		✓						
Exposed Machinery Casings on Freeboard or Raised Quarter Deck ...	Hinged steel doors operated from both sides. ✓							
Exposed Machinery Casings on Superstructure Decks ...		✓						
Machinery Casings within Superstructures not fitted with Class I Closing Appliances ...		✓						
Deckhouses on Flush Deck Ships ...	Hinged steel doors with packing & 4 toggles, operated from both sides. ✓							

PARTICULARS OF PROTECTION TO OPENINGS, ETC.

The following diagrams should be used to indicate the positions of cargo and coaling hatchways, gangway, cargo and coaling ports, ventilators, companionways, etc., which would affect the seaworthiness of the ship:—



Particulars of fiddle, funnel and ventilator coamings, engine room skylight and other openings in machinery casing tops and their means of closing:—

Engine room skylight, fiddle, funnel, & ventilator coamings of steel strongly constructed.
Fiddle opening fitted with hinged steel covers.

Particulars of Flush Bunker Scuttles:—

NONE.

Particulars of Companionways:—

on Freeboard Deck.
To After Accom² Deck opening 2'-6" x 5'-0", plating 25, hinged steel W.T. door, 4 toggle.

Sky light to After Accom² 3'-0" x 3'-0", plating 30, 22" to lip.

Particulars of Ventilators in exposed positions on freeboard and superstructure decks:—

No.	Description	Coaming
1-10"	Vent to Fore Peak Store	36" x 32"
6-24"	" " Hold & Lower Deck	36" x 42"
2-18"	" " " " "	10'-6" x 40" stayed.
1-18"	" " " " "	36" x 40"
2-12"	" " " " "	10'-6" x 34" stayed.
4-8"	" " " " "	36" x 30"
3-12"	" " " " "	36" x 34"
2-18"	" " " " "	36" x 40"
9-6", 4-8", 4-9", 3-10"	Vents to After Accom ² , Steering Gear & Store	36" x 30"

Ventilators fitted with wood plugs & canvas covers.

Particulars of Air Pipes in exposed positions on freeboard, raised quarter, or superstructure decks:—

Air pipes 30" in height to lip, fitted with wood plugs.

Particulars of Gangway Cargo and Coaling Ports:—

Particulars of Scuppers and Sanitary Discharge Pipes:—

NONE.
5-2 1/2" slot cut in upper deck stringer angle, to drain deck.
Scupper from cargo hold deck led to bilge, self closing cock in E.R. bilge.
Discharges from spaces on or above freeboard deck, led to N.R. valves in lower decks.
Scupper from Refrig. space below freeboard deck, led to controlled N.R. valve.
Discharges from after accom² below freeboard deck, led to controlled N.R. valves.
Discharges from after accom² below freeboard deck, led to hold bilge, open ended, and to tunnel well, with weighted lower plug cock.

Particulars of Side Scuttles:—

10" dia. side lights to Accom² in Lower Deck aft, fitted with substantial hinged deadlights.

Vertical distance of Sill of lowest Side Scuttle above top of keel

33'-9"

Particulars of Guard Rails:—

In way of X Accom² bulwark 127'-6" x 3'-6" x 26, rail has 6 x 3 1/2 x 7/16 L on remainder of freeboard deck, rails 3'-6" high, 3 rods, stanchions about 5'-0" apart.

Particulars of Gangways, Lifelines, etc.:—

One lifeline supplied with fittings P. & S.

Particulars of Freeing Arrangements.

	Length of Bulwark	Height of Bulwark	Size of Freeing Ports	Number each side	Area each side	Rule area each side
After Well ...	127'-6"	3'-6"	3'-0" x 9"	5.	11.25 sq.	
Forward Well ...						

State position of each freeing port ... After Well:— ✓

(F. and A. position and height above deck edge) Forward Well:— ✓

State whether the freeing ports are fitted with shutters, bars, or rails, and give particulars of such:— ✓

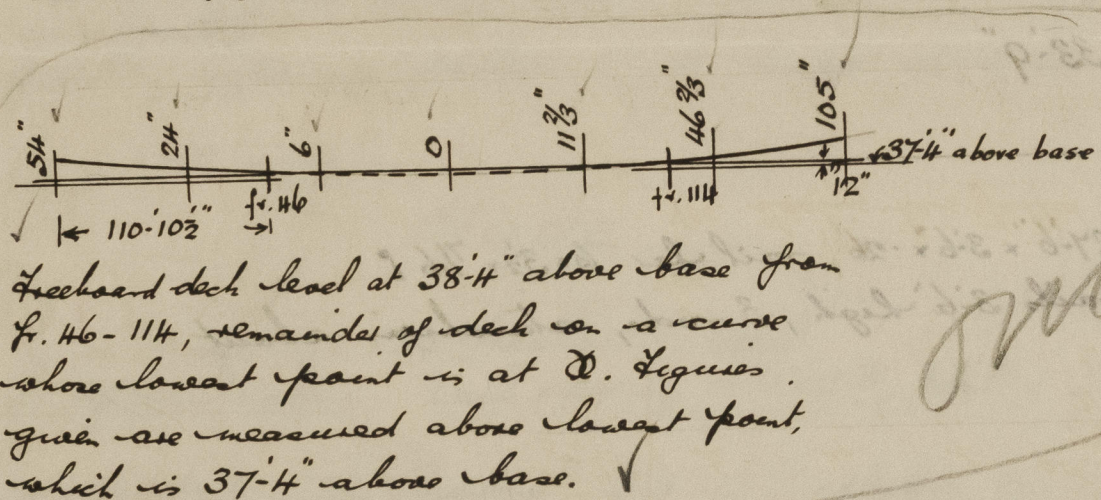
Additional area where sheer is less than standard. ✓

PARTICULARS OF PROTECTION TO OPENINGS, ETC.

HATCHWAYS ON FREEBOARD AND SUPERSTRUCTURE DECKS.									
Description of Hatchway	N ^o 1	N ^o 2, 4, 5	N ^o 3	CROSS BUNKER	BUNKER HATCHES	HATCH TO STORE FOR ²	HATCH TO STEERING GEAR	BUNKER HATCH ON CASING TOP	
Dimensions of Hatchway	33'9" x 20'	35' x 20'	15' x 20'	7'6" x 20'	9'8" x 4'	3'9" x 3'	1'9" x 2'6"	4'5" x 18'6"	
COAMINGS	Height above Deck ... 30" Thickness { Sides ... 1 1/4" Ends ... 1 1/4" Stiffeners ... See sketch Brackets, Stays ... 3	Height above Deck ... ✓ Thickness { Sides ... do. Ends ... do. Stiffeners ... 3 Brackets, Stays ... 3	Height above Deck ... ✓ Thickness { Sides ... do. Ends ... do. Stiffeners ... 2 Brackets, Stays ... 2	Height above Deck ... ✓ Thickness { Sides ... do. Ends ... do. Stiffeners ... 1 Brackets, Stays ... 1	Height above Deck ... 30" Thickness { Sides ... 1 1/4" Ends ... 1 1/4" Stiffeners ... ✓ Brackets, Stays ... ✓	Height above Deck ... 24" Thickness { Sides ... 1 1/4" Ends ... 1 1/4" Stiffeners ... ✓ Brackets, Stays ... ✓	Height above Deck ... 24" Thickness { Sides ... 1 1/4" Ends ... 1 1/4" Stiffeners ... ✓ Brackets, Stays ... ✓	Height above Deck ... 9" Thickness { Sides ... 1 1/4" Ends ... 1 1/4" Stiffeners ... ✓ Brackets, Stays ... ✓	Height above Deck ... 11" BA Thickness { Sides ... 9" BA Ends ... 9" BA Stiffeners ... ✓ Brackets, Stays ... ✓
HATCH BEAMS	Number ... 5 Spacing ... equal Scantling and Sketch ... 5 x 3 x 3/8 Bearing Surface ... 18 1/2" x 36"	Number ... 5 Spacing ... do. Scantling and Sketch ... do. Bearing Surface ... 18 1/2" x 34"	Number ... 2 Spacing ... do. Scantling and Sketch ... do. Bearing Surface ... 16 1/2" x 34"	Number ... 1 Spacing ... do. Scantling and Sketch ... do. Bearing Surface ... 15 1/4" x 32"	Number ... ✓ Spacing ... ✓ Scantling and Sketch ... ✓ Bearing Surface ... ✓	Number ... ✓ Spacing ... ✓ Scantling and Sketch ... ✓ Bearing Surface ... ✓	Number ... ✓ Spacing ... ✓ Scantling and Sketch ... ✓ Bearing Surface ... ✓	Number ... ✓ Spacing ... ✓ Scantling and Sketch ... ✓ Bearing Surface ... ✓	Number ... ✓ Spacing ... ✓ Scantling and Sketch ... ✓ Bearing Surface ... ✓
FORE AND AFTERS	NONE.								
HATCH COVERS	Material ... R.W. Thickness ... 3" How fitted ... F.A.A. Bearing Surface ... 5' x 3"	Material ... do. Thickness ... do. How fitted ... do. Bearing Surface ... do.	Material ... do. Thickness ... do. How fitted ... do. Bearing Surface ... do.	Material ... do. Thickness ... do. How fitted ... do. Bearing Surface ... do.	Material ... R.W. Thickness ... 2 1/2" How fitted ... all-weld. Bearing Surface ... 2 1/2"	Material ... do. Thickness ... do. How fitted ... do. Bearing Surface ... do.	Material ... do. Thickness ... do. How fitted ... do. Bearing Surface ... do.	Material ... F.A.A. Thickness ... do. How fitted ... do. Bearing Surface ... do.	Material ... do. Thickness ... do. How fitted ... do. Bearing Surface ... do.
Spacing of Cleats	24"				24"				
Number of Tarpaulins	2.				2				

*Are wood fore and afters steel shod at all bearing surfaces? ✓
 Are battens and wedges efficient and in good condition? YES.
 Are tarpaulins in good condition and in accordance with rule requirements? YES.
 Are lashings provided in accordance with rule requirements? YES. Locking has fitted at all main hatches. ✓

Particulars of any special features:—



Endorsement at first survey and at surveys for renewal of Certificate:—

The fittings and appliances are in accordance with the particulars shown on this form (or as now modified) and are in good condition.



© 2021

Lloyd's Register
Foundation