

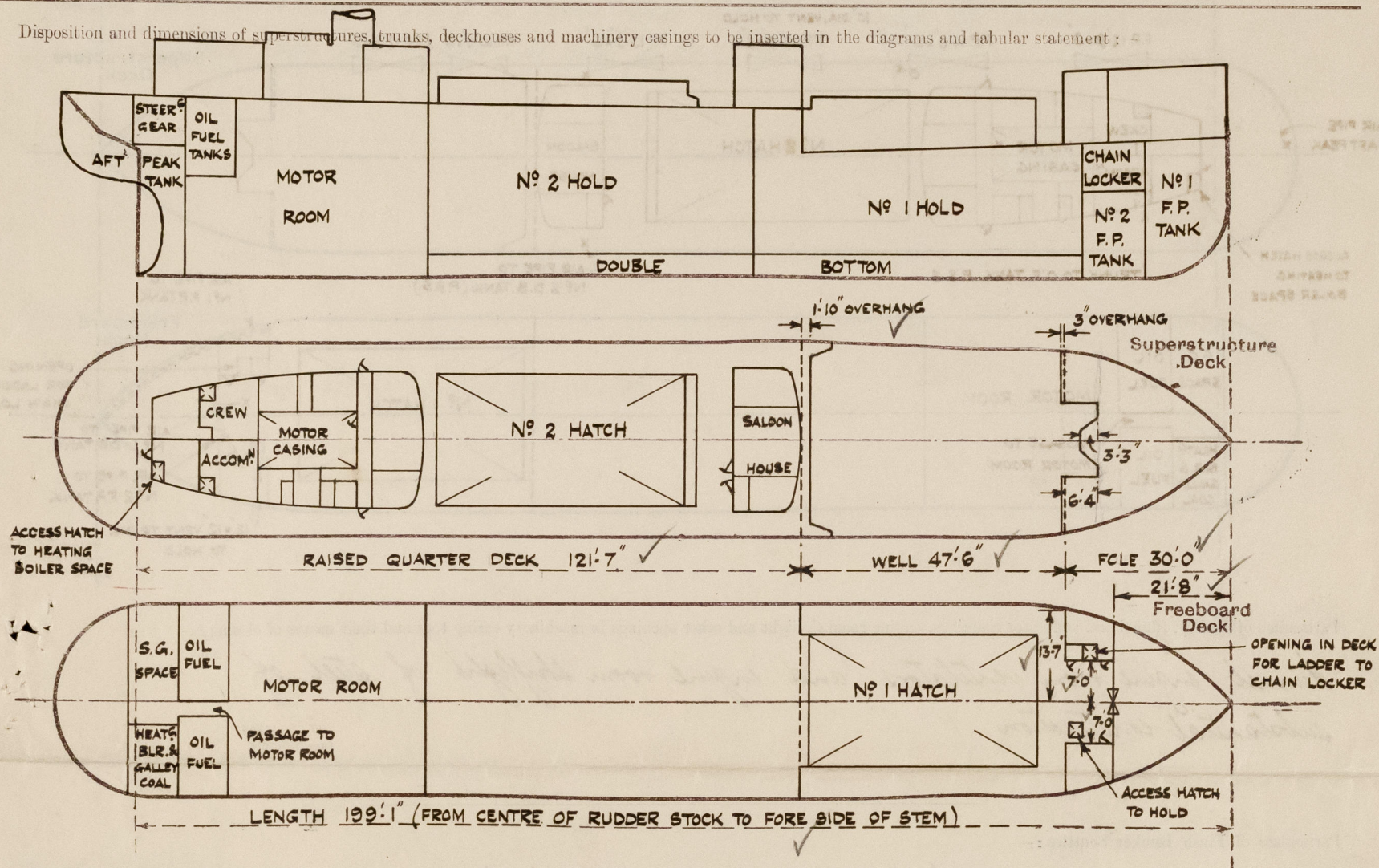
Lloyd's Register of Shipping.

SURVEYS FOR FREEBOARD.

(CONDITIONS OF ASSIGNMENT.)

Ship's Name	EMPIRE GAT	Port of Survey	GLASGOW
Official Number	168674	Surveyor's Signature	S. W. Bowell.
Nationality and Port of Registry	BRITISH. GLASGOW.	Date of Survey	WHILST BUILDING

Disposition and dimensions of superstructures, trunks, deckhouses and machinery casings to be inserted in the diagrams and tabular statement :



Particulars of Superstructures, Trunks, Casings, Deckhouses.

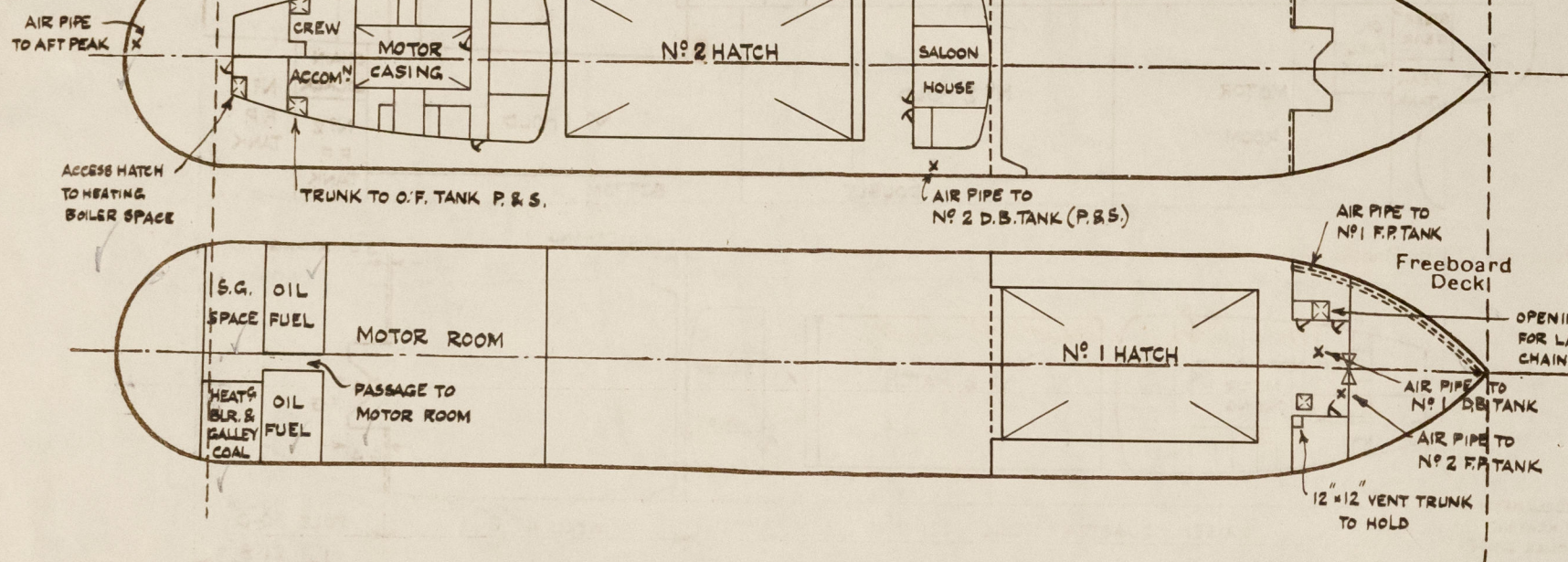
	Coaming	Plating	Stiffeners	Spacing	End Attachments of Stiffeners	Size of Openings	Height of Sills	Height of Casings
Peep Bulkhead								
Raised Quarter Deck Bulkhead40	.40	1 PLATE WEB IN SPACE OF	5'3" ✓	✓	✓	✓	✓
Bridge, After Bulkhead								
FORECASTLE SIDEHOUSES								
Bridge, Forward Bulkhead21	.21	4 x 2½ x 25 O.A.	30"	NONE	4'10" x 1'10"	18"	7'0"
Forecastle Bulkhead21	✓ .21	3 x 3 x 32 O.A. ✓	30"	NONE ✓	5'0" x 4'0"	18"	7'0" ✓
Trunk, Aft								
Trunk, Forward								
Exposed Machinery Casings on Free board or Raised Quarter Deck26	✓ .26	3 x 3 x 30 O.A.	30"	BKTD. TOP ONLY	5'6" x 2'0"	9"	7'0"
Exposed Machinery Casings on Super structure Deck								
House Enclosing Machinery Casings within Superstruc tures not fitted with Class I Closing Appliances26	✓ .26	2½ x 2½ x 25 O.A. ✓	30" ✓	BKTD. TOP ONLY ✓	4'10" x 2'0"	18" ✓	7'0" ✓
R.Q. Deckhouses on Plank Deck Slips31	.31	4 x 2½ x 28 O.A.	27" & 30"	WELDED TO DECK TOP & BOTTOM.	4'10" x 2'0"	18"	7'0"

Particulars of Closing Appliances (state if capable of being manipulated from both sides).

Poop Bulkhead	✓
Raised Quarter Deck Bulkhead ...	NO OPENINGS ✓
Bridge, After Bulkhead	✓
FORECASTLE SIDEHOUSES	
Bridge, Forward Bulkhead	STEEL DOORS, CAPABLE OF BEING MANIPULATED FROM BOTH SIDES ✓
Forecastle Bulkhead	STEEL PLATE 30" THICK, EFFICIENTLY STIFFENED, SECURED BY HOOK BOLTS SPACED ABOUT 15" APART. ✓
Exposed Machinery Casings on Fore- board or Raised Quarter Deck ..	WOOD DOOR, STRONGLY CONSTRUCTED, CAPABLE OF BEING MANIPULATED FROM BOTH SIDES. ✓
Exposed Machinery Casings on Super- structure Decks	✓
House Enclosing	
Machinery Casings within Superstruc- tures not fitted with Class I Closing Appliances	STEEL DOORS, CAPABLE OF BEING MANIPULATED FROM BOTH SIDES. ✓
R.Q.	
Deckhouse on Flash Deck Ship ...	" " " " " " " " ✓

44 288 J

The following diagrams should be used to indicate the positions of cargo and coaling hatchways, gangway, cargo and coaling ports, ventilators, companionways, etc., which would affect the seaworthiness of the ship:



Particulars of fiddle, funnel and ventilator coamings, engine room skylight and other openings in machinery casing tops and their means of closing :—

Tunnel, engine room ventilators, and engine room skylight of steel of substantial construction.

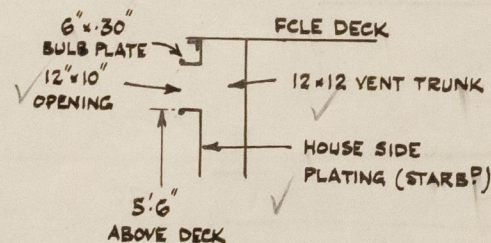
Particulars of Flush Bunker Scuttles:—

Novl. ✓

Particulars of Companionways:— Access to Chain Locker - opening in Upper Deck 2'6" x 2'6" inside forecabin sidehouse (Port). Steel door, opening 4'4" x 2'6", with sill 24" above deck, capable of being manipulated from both sides. ✓
Access to Heating Boiler and Galley Coal - opening in L.Q.R. 2'4" x 1'10" inside deckhouse. Steel door, opening 4'10" x 1'10", with sill 18" above deck, capable of being manipulated from both sides. ✓

Particulars of Ventilators in exposed positions on freeboard and superstructure decks :—

To No. 1 Hold on Starboard side in corner of Forecastle
sidehouse. Fitted with means of closing. ✓



L. N.º 2 Hold. 10" dia. cowl vent on L. Q. N. Port.
 coaming 36" high x .32 thick. Fitted with wood plug & canvas cover.

1- 10" C.V. (Port) abeam aft end of No. 1 Hatch Coaming 36" x 32"
1- 10" C.V. (Starb) between fore end of No. 2 Hatch & Saloon Hinge on R. & Deck Coaming 36" x 32".
Wood plugs & tammers covers provided.

Particulars of Air Pipes in exposed positions on freeboard, raised quarter, or superstructure decks :—

As N^o. 1 Fore Peak Tank - 1 @ 4" dia. led from fore end of tank to aft end of L'dle sidehouse (Port); lip 36" above Upper Red.

" " 2 " " - 1 @ 4" dia. under L'dle; lip 36" above Upper Red, fitted with steel hat.

" " 1 S.B. Tank - 1 @ 6" " " " " " " " "

" " 2 " " - 2 @ 4½" (P.S.) abreast Saloon House; lip 30" above R.R.L., fitted with steel hats ✓

" After Peak - 1 @ 3½" dia. at stern; lip 30" above R.R.L. ✓

Air paper fitted with satisfactory means of closing. ✓

Particulars of Gangway Cargo and Coaling Ports:—

None

Particulars of Scuppers and Sanitary Discharge Pipes :—

1 pipe scupper from R.D.L. (D+L) fitted abreast Engine Room, led overboard just below R.D.L. ✓
Discharges from washbasins & H.C.'s in Saloon House & After Deckhouse led overboard below
R.D.L. & fitted with storm valves at outer ends.

Particulars of Side Scuttles :—

None below Greboard Lick.

Vertical distance of Sill of lowest Side Scuttle above top of keel

Particulars of Guard Rails :—

L. B. L. " " " " " " " " " " " "

Particulars of Gangways, Lifelines, etc. :—

Portable stanchions with lifelines fitted on hatch coaming in well

Particulars of Freeing Arrangements.						
	Length of Bulwark	Height of Bulwark	Size of Freeing Ports	Number each side	Area each side	Rule area each side
After Well	123.42' ✓	3'3" ✓	<i>See sketch</i>		26.62 ϕ ✓	24.68 ϕ . ✓
Forward Well	44.5' ✓	3'9" - 4'9" ✓			11.25 ϕ ✓ 14.91	11.25 ϕ ✓
State position of each freeing port	{ After Well :— (to centre from 22.2 ^o hull)			15'9", 44'9", 44'6", 103'6"	8"	
(F. and A. position and height above deck edge)	{ Forward Well :— - - - -			10'3", 26'6"	10"	
State whether the freeing ports are fitted with shutters, bars, or rails, and give particulars of such :—				No. ✓		
Additional area where sheer is less than standard.						

PARTICULARS OF PROTECTION TO OPENINGS, ETC.

HATCHWAYS ON FREEBOARD AND SUPERSTRUCTURE DECKS.									
← FREEBOARD D.K. → R.Q.D.K. CASING TOP.									
Description of Hatchway		N ^o 1 CARGO	ACCESS HATCH	N ^o 2 CARGO	O.T. HATCH P. & S.				
Dimensions of Hatchway		40'8" x 22'0"	2'6" x 2'6"	45'10" x 22'0"	2'9" x 2'3"				
COAMINGS	Height above Deck	5'3" to 3'6"	2'0"	2'6"	1'6"				
	Thickness	.44	.38	.44	.31				
	Sides	.44	.38	.44	.31				
	Ends	.44	.38	.44	.31				
Stiffeners		7x3x44 B.A.	✓	7x3x40 B.A.	✓				
Brackets, Stays		5 .38 FLG ^o PL.	✓	6 .38 FLG ^o PL.	✓				
HATCH BEAMS	Number	7		7					
	Spacing	5'-1 3/4"		5'-9 1/2"					
	Scantling and Sketch	10 1/2 x .36 5x3x46		17 x .36 5x3x46					
	Bearing Surface	3"	✓	3"	✓				
FORE AND AFTERS	Number								
	Spacing								
	Unsupported Lengths								
	Scantling* and Sketch								
Bearing Surface									
HATCH COVERS	Material	W.P.	W.P.	W.P.	STEEL PLATE				
	Thickness	2 1/2	2 1/2	2 1/2	.31				
	How fitted	F. & A.	SOLID	F. & A.	✓				
	Bearing Surface	3"	3"	3"	✓				
Spacing of Cleats		24"	19"	24"	TOGGLES				
Number of Tarpaulins		2	2	2	20" APART				
<p>*Are wood fore and afters steel shod at all bearing surfaces? <i>yes</i> ✓</p> <p>Are battens and wedges efficient and in good condition? <i>yes</i> ✓</p> <p>Are tarpaulins in good condition and in accordance with rule requirements? <i>yes</i> ✓</p> <p>Are lashings provided in accordance with rule requirements? <i>yes</i> ✓</p>									

Particulars of any special features:—

Fittings for special lashings are provided for securing the wood covers of N^o 1 Hatch on the Freeboard Deck. ✓

Endorsement at first survey and at surveys for renewal of Certificate:—

The fittings and appliances are in accordance with the particulars shown on this form (or as now modified) and are in good condition.



© 2021

Lloyd's Register
Foundation