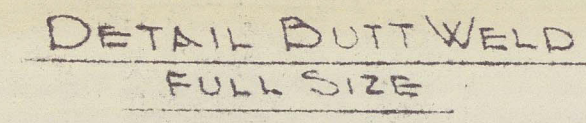
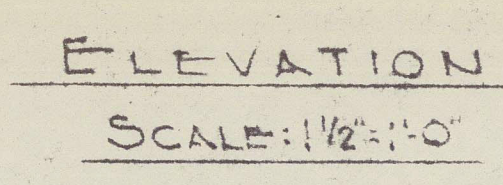


- GENERAL NOTE
1. REMOVE EXISTING DUCKWEED, DRONES, BULK DUTCH FLUSH, FILL 50% OF APPRECIABLE DEPTH WITH WETTED AND GRIND SMOOTH
  2. ALL RIVERS IDLE, COUNTERSUNK IN OUTRIGER SIDE EXCEPT TWO ROWS ON EITHER SIDE OF ALL DUCKS WHICH ARE TO BE COULDED BULK BOTH SIDES
  3. DUTY WELD OF 8" X 1/4" DUCKS TO BE SCAMPED
  4. WELDING OF 8" X 1/4" DUCKS TO STEEL STRAP BETWEEN DUCKS IS SUFFICIENT TO PREVENT FLUSH TO NEW PLATE
  5. FAYING SURFACES OF DUCKS & STEEL KEEL DOUBLE TO BE SANDEGRADED

REFERENCE DWG:  
35722 NEW BOTTOM SHELL STEEL PLATE  
35721 ALTERATION TO UPPER DR. GDS



DEPT.		PERIOD	DATE	BURO
		MONTH		
		DAY		
TAKEN				
ESTIMATING				
FILE				
LIST				
SHEET METAL				
OUTLINE MACH				
MICH LORT				
HOLD				
NOOP				
OFFICE				
SUB. SUE				
BOOR				
FOUR				
WARRANT				
ARMEDS				
CHORE				
FAVORITE				
MAJOR				
CHORE				
U. S. C.				
CASE & A				
UTIN				
LOYD				

APPROVED

APPROVED

APPROVED

APPROVED

APPROVED  
WIT-  
MAY 1952  
LIMITED QUANTITIES OF BRITISH  
NEW YORK

CONTRACT NO. 350847SR

BETHLEHEM STEEL COMPANY  
SHIPBUILDING DIVISION

BALTIMORE YARD BALTIMORE, MD.

ALTERATION TO DILGERS KEELS  
T-2 FRANKERS

Drawing By: J.H.S.  
Traced By:  
Checked By:  
Scale: As Shown

Chief Draftsman  
Chief Engineer  
Inspector  
Date: MAY 14, 1952

DRAWING No. 35720 A-10