

DRAWING No. 1304/17.

TWIN SCREW FERRIES - BIRKENHEAD.

### DETAILS OF TWIN RUDDERS.

SCALE:-  $1\frac{1}{2}$ " TO ONE FOOT & AS MARKED.

2 RUDDERS PER VESSEL - ALL WELDED

CENTRES OF RUDDERS 8'-0" OFF C.P. & S.

AREA OF RUDDER = 24.8 SQ. FEET.

CENTRE OF AREA = 7" AFT OF  $\frac{1}{2}$  OF STOCK

MAXIMUM SPEED =  $12\frac{1}{2}$  KNOTS.

means of draining buddes to be provided.

Internal Surfaces of Rudders to be  
efficiently coated.

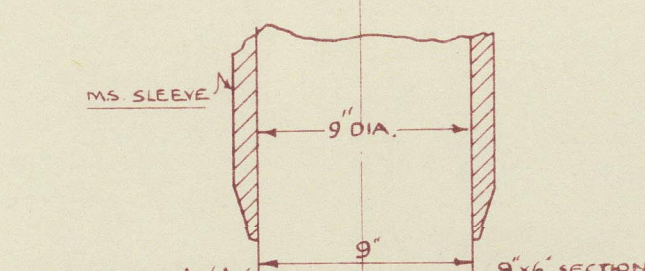
Forgings to be of weldable quality containing not more than 0.23% carbon.

*Submitted*

PHILIP & SON, L<sup>TD</sup>  
ENGINEERS  
AND  
SHIP BUILDERS  
ETC.  
DARTMOUTH

18.5.58

13. 5. 58

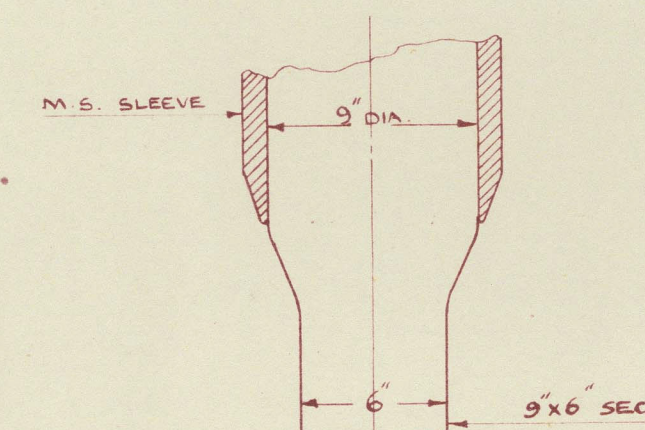


SECTION B-B

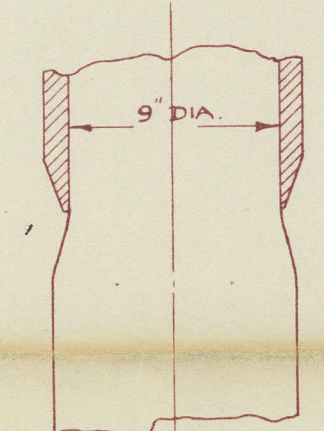


Do not form sharp corner

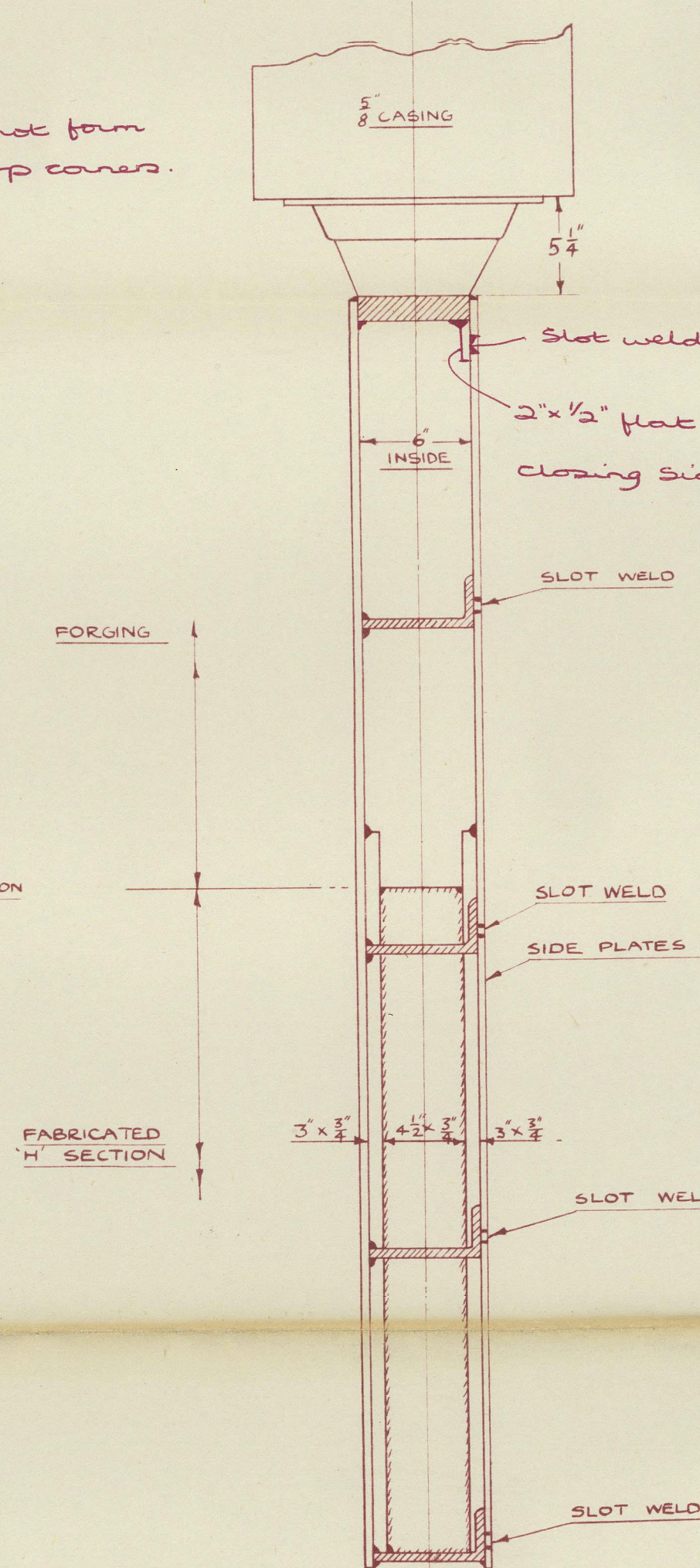
PLAN VIEW THRO  
STOCK AT 'X'-X'



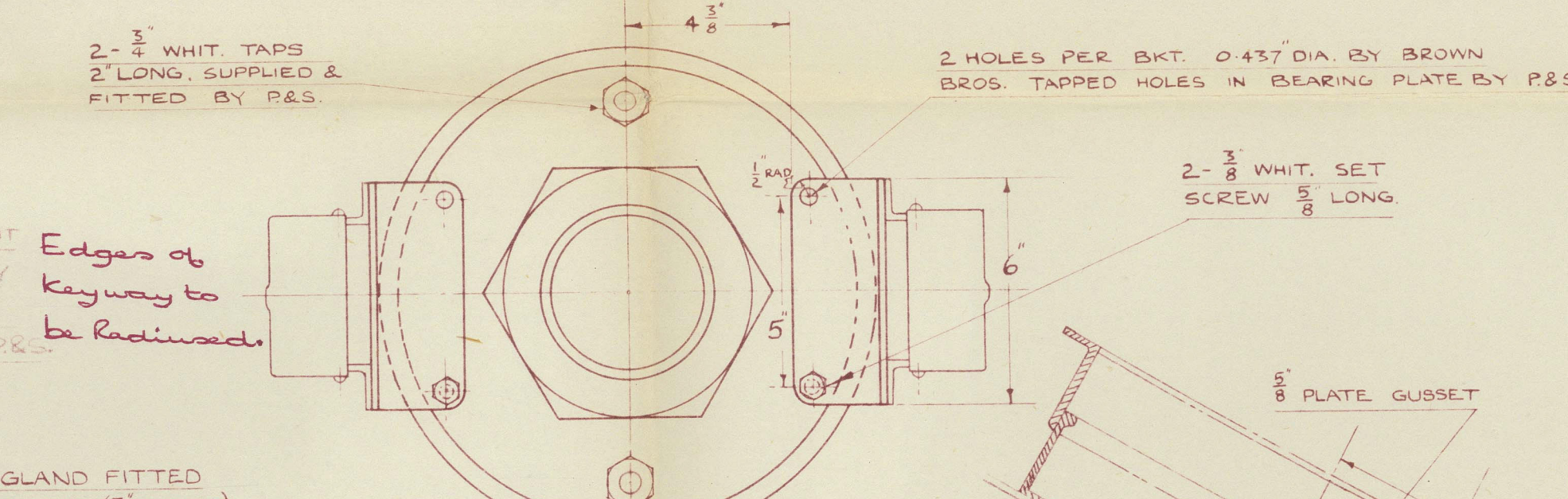
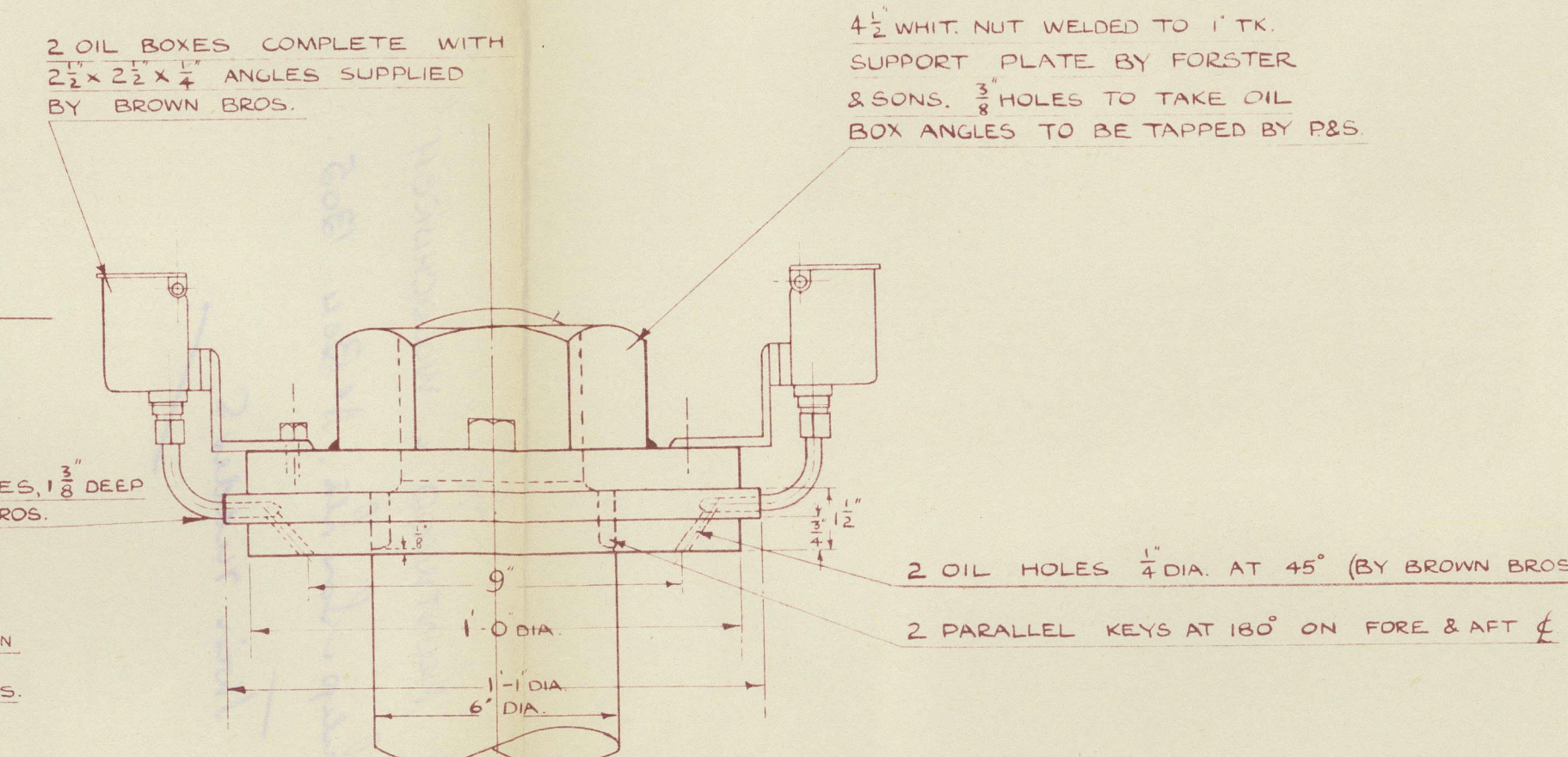
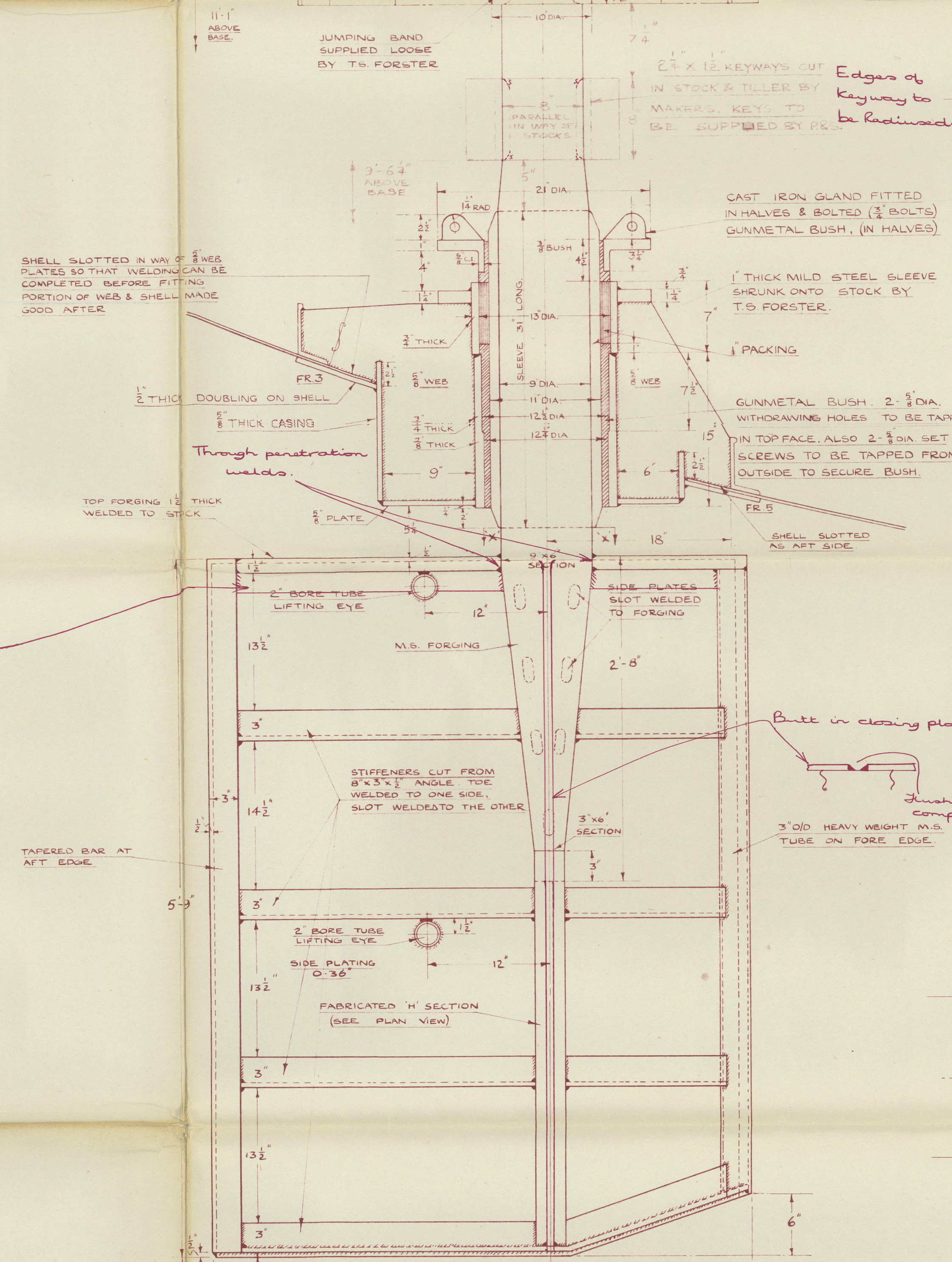
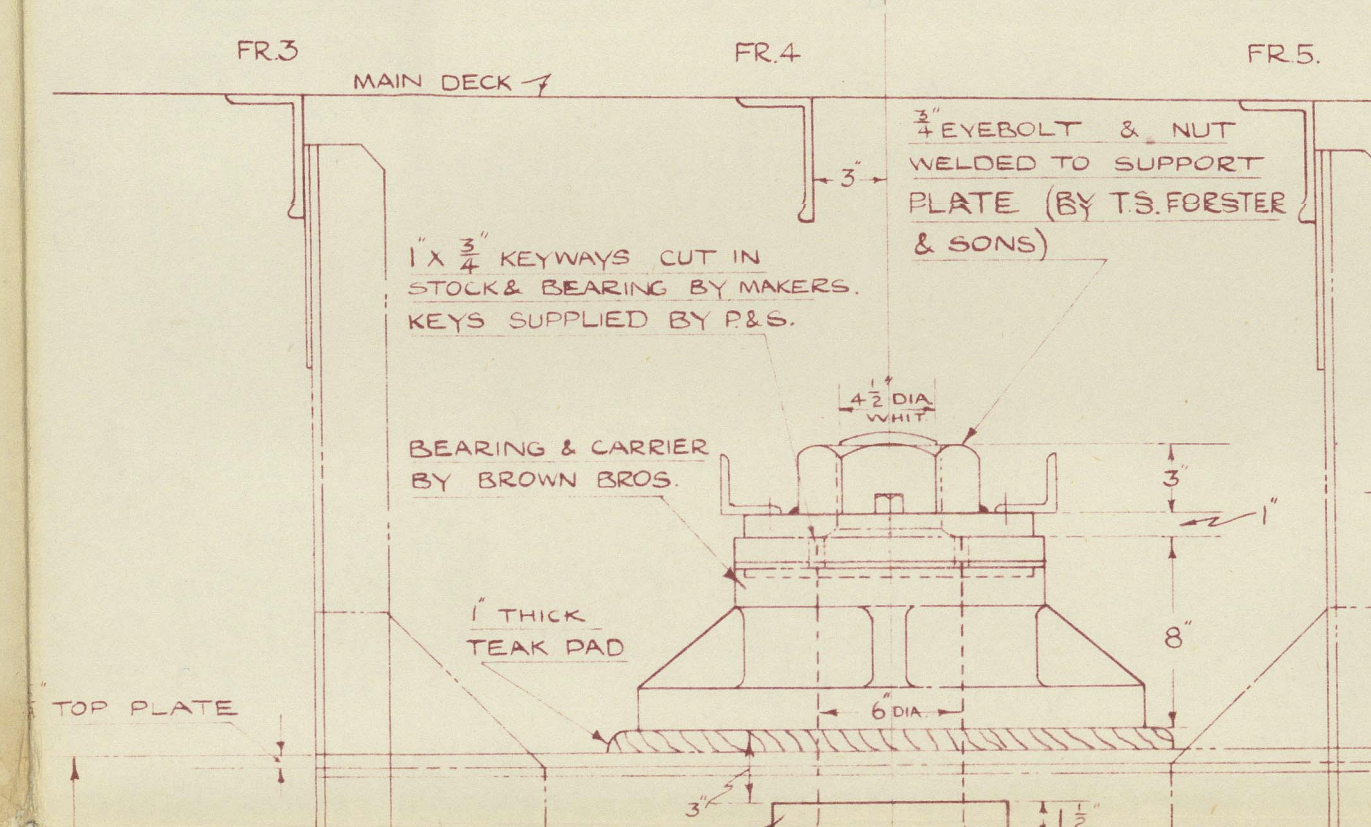
SECTION C-C



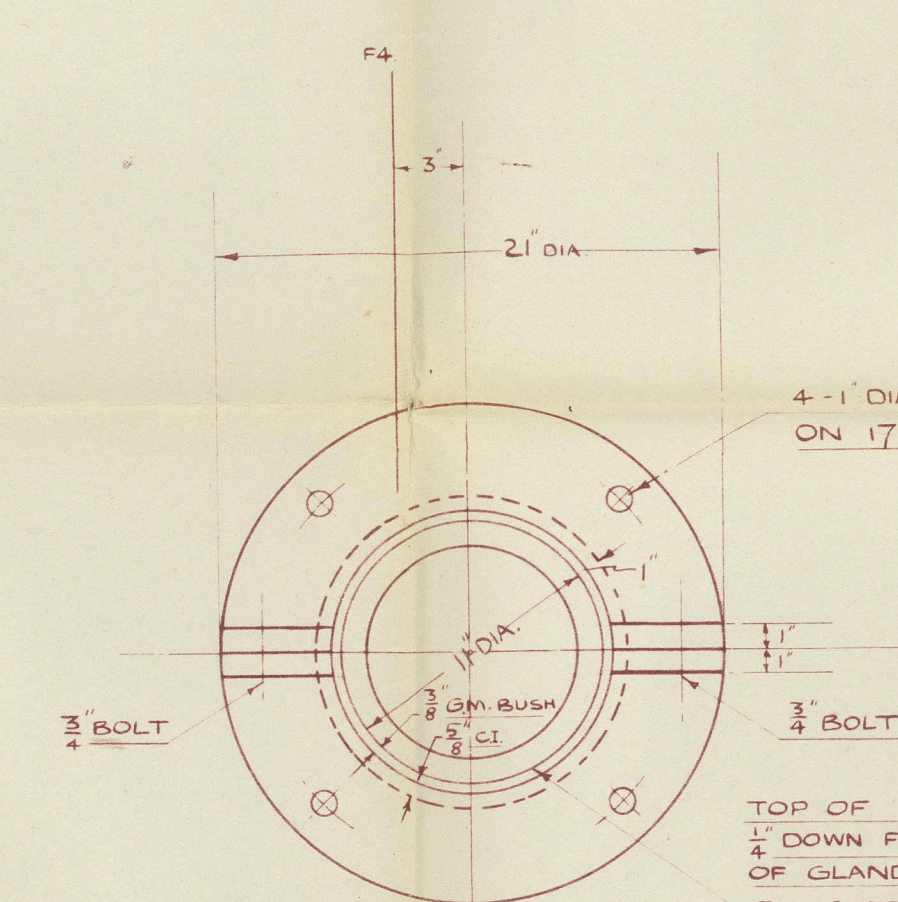
SECTION 'D-D'



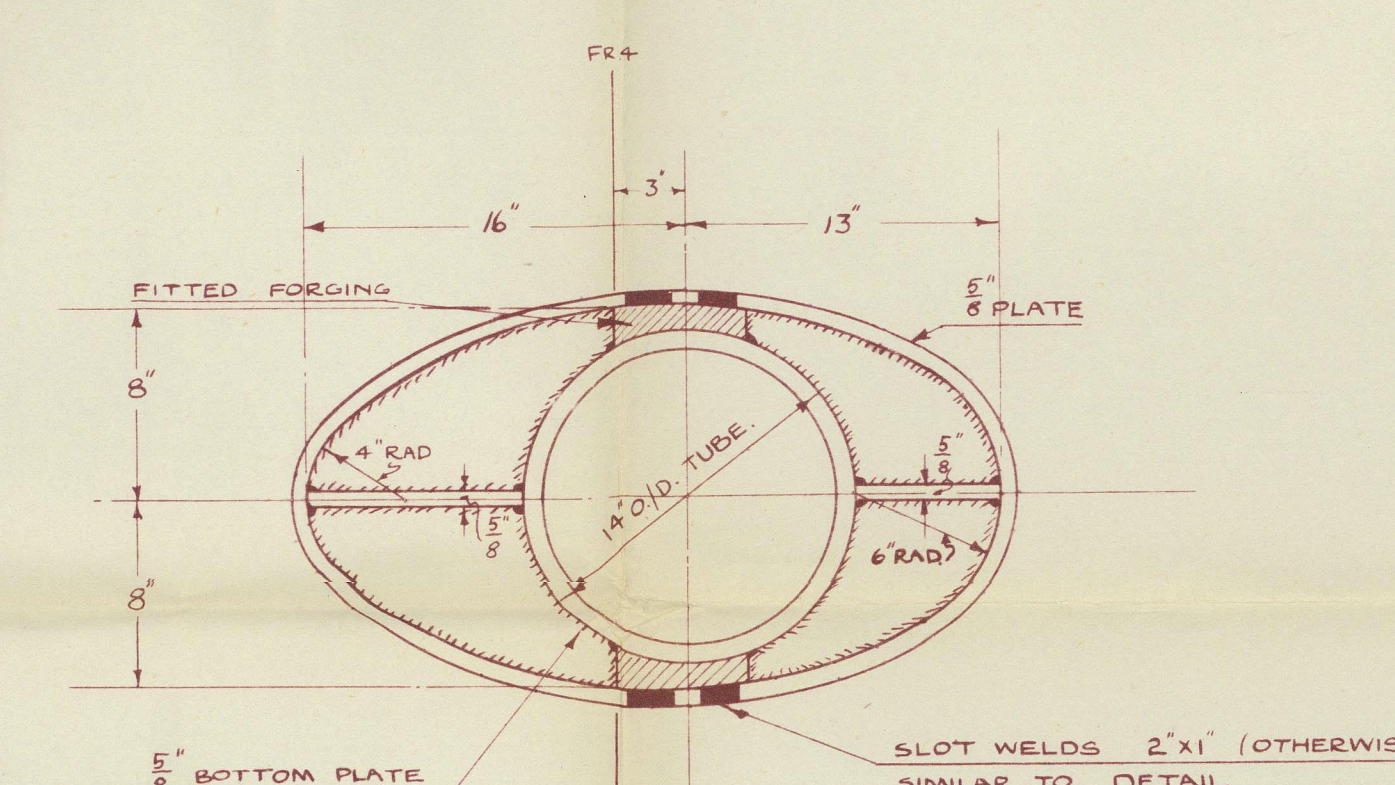
SECTION



DETAIL SHOWING FRAM  
ATTACHMENT OF OIL BOXES  
TO SUPPORT PLATE.

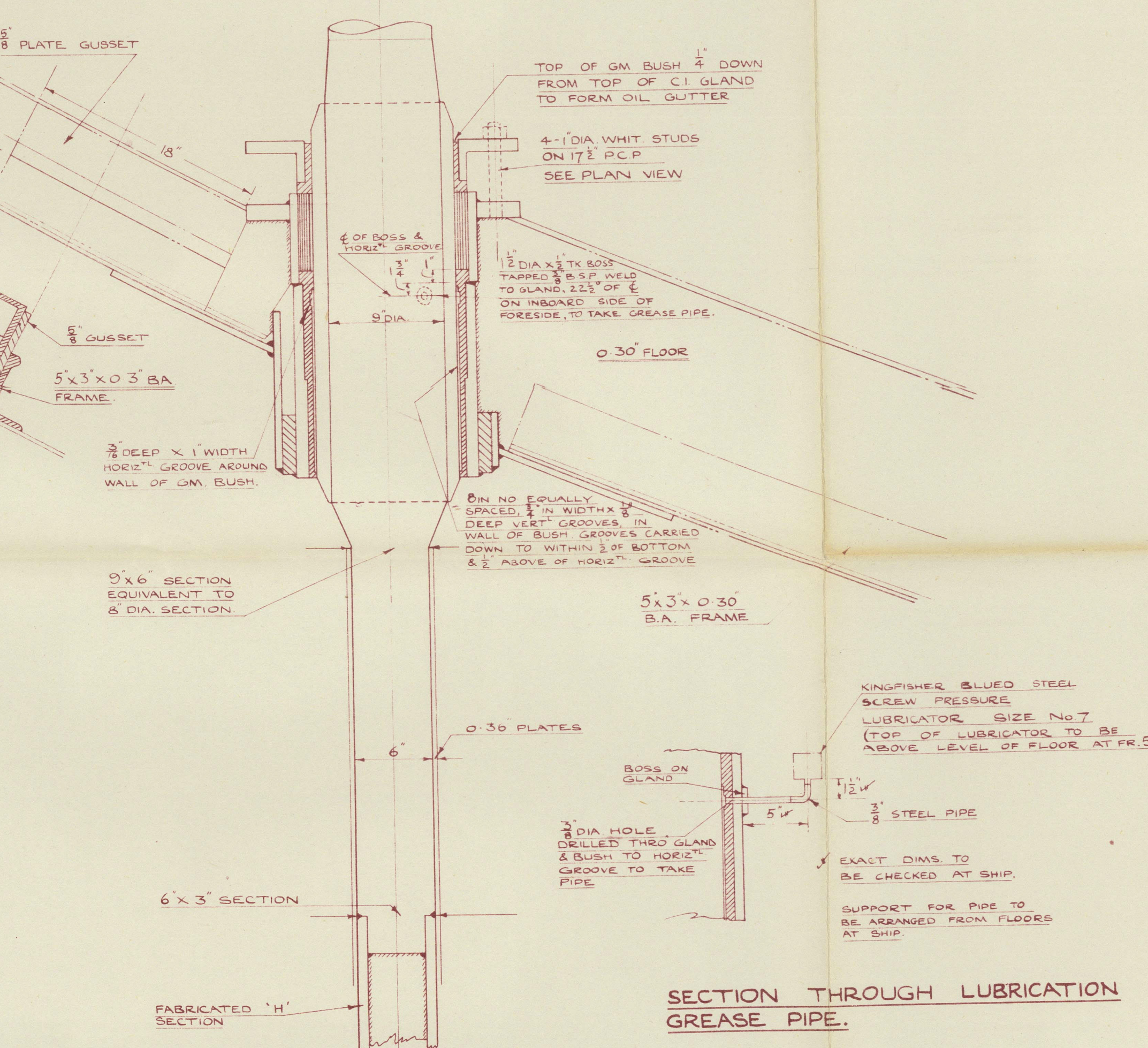


### PLAN OF C.I. GLAND



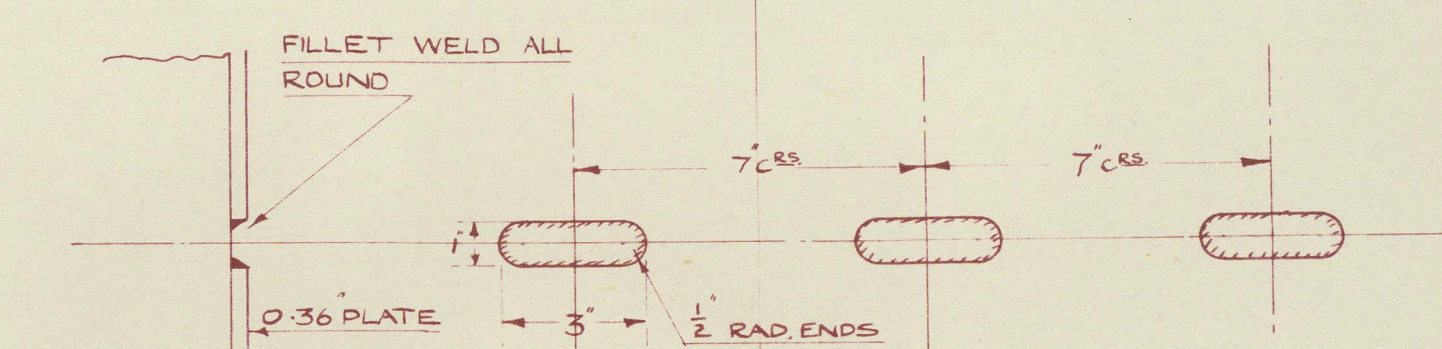
## PLAN OF CASING

NOTE! POSITION OF BUTTS TO BE ARRANGED IN CASING PLATE TO EASE MANUFACTURE.

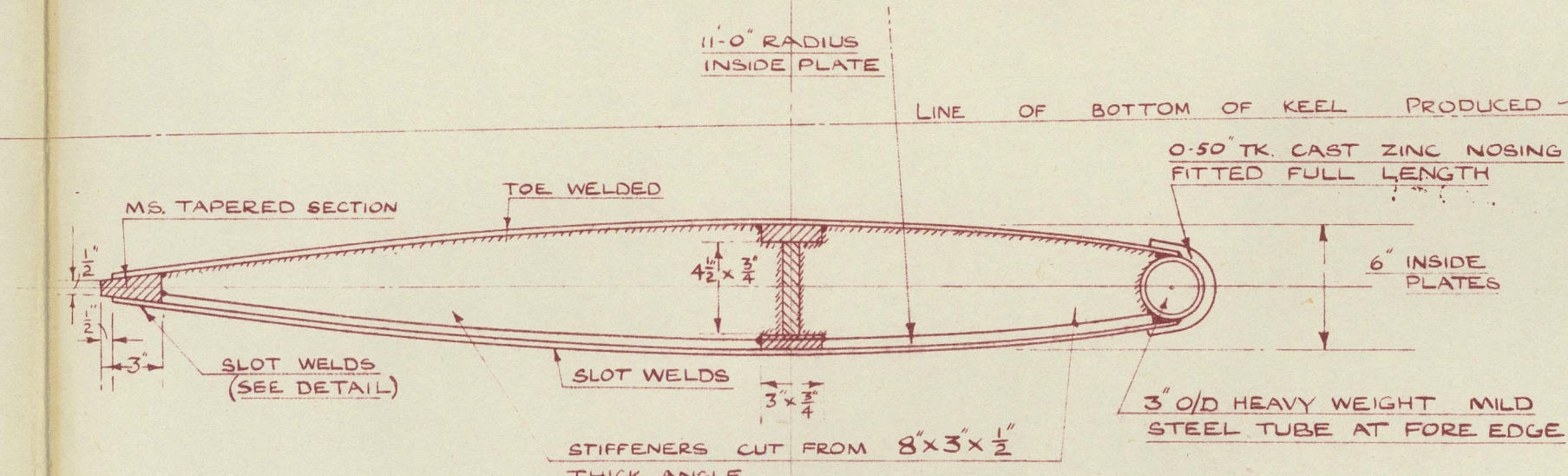


SECTION THROUGH LUBRICATION  
GREASE PIPE.

## SECTION THRO' CENTRE OF STOCK & METHOD OF LUBRICATION.



### DETAIL OF SLOT WELDS



PLAN VIEW

YARD Nos. 1304/5

013027-013032-0025



refs. "MOUNTWOOD" <sup>★</sup> "WOODCHURCH"

Philip Son Ltd. No 1304. 1305.

21.7

Twin rudders

RECORDS DEPT.,  
LONDON.

16

025



© 2021

Lloyd's Register  
Foundation

013027-013032-0025