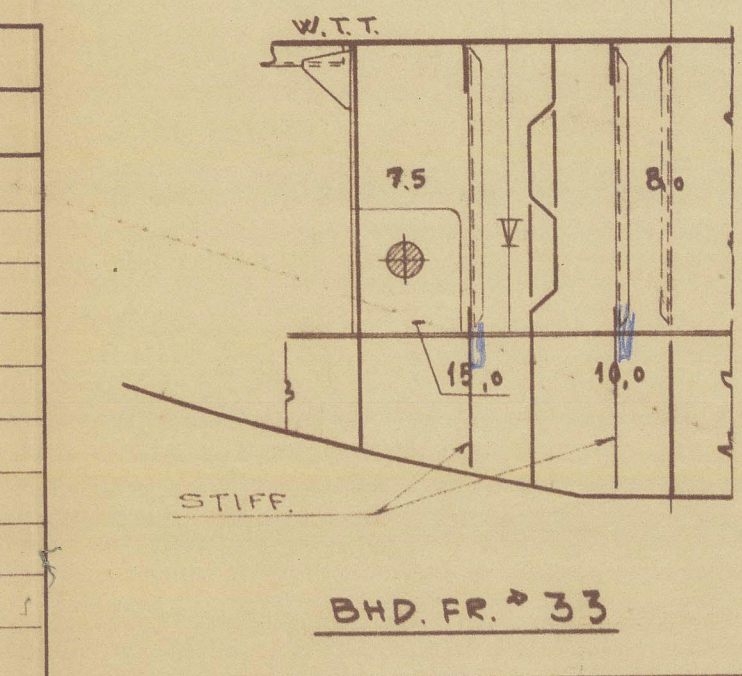
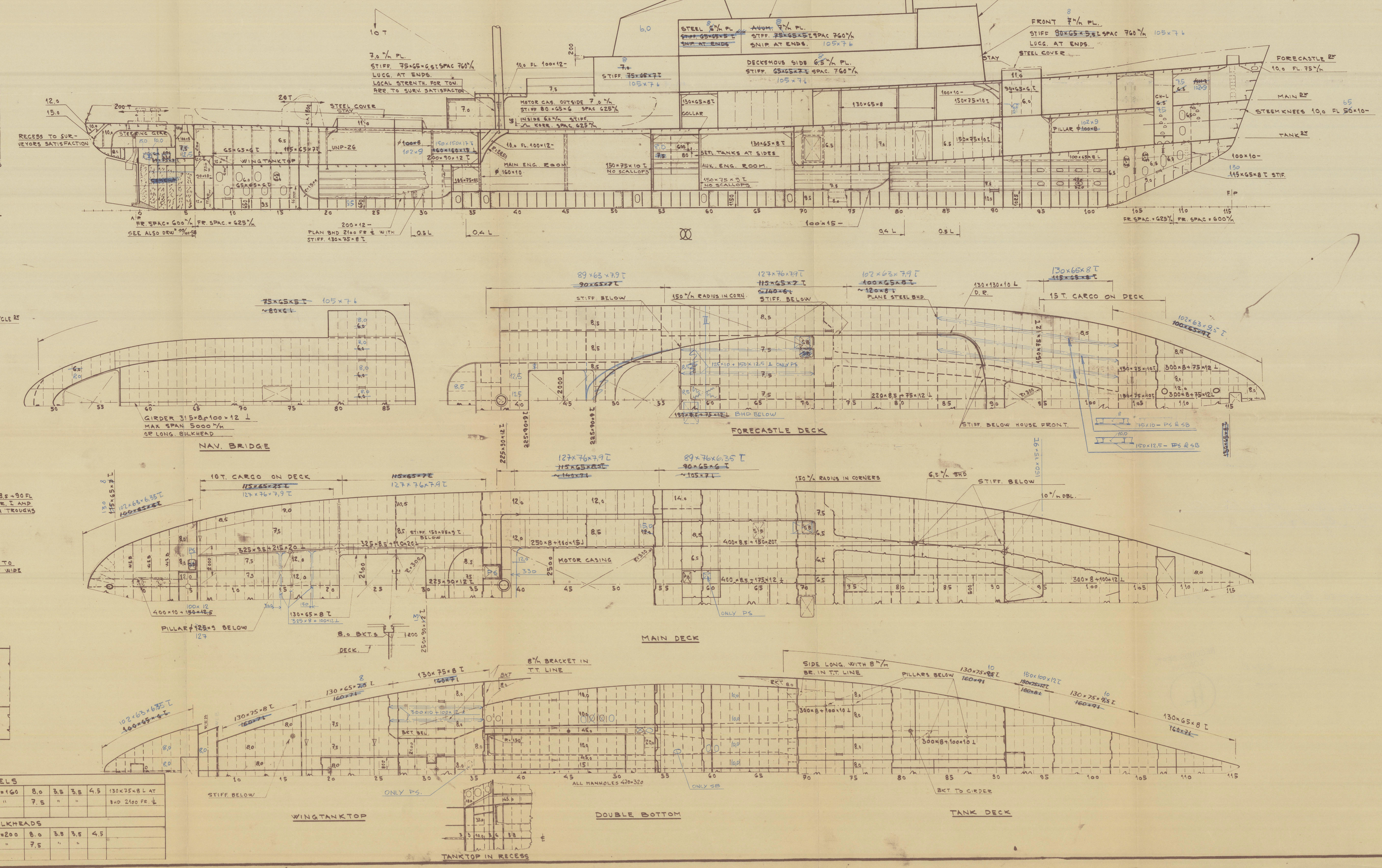


WT. BULKHEADS						
BULKHEAD	$\frac{1}{2} \sqrt{a^2 + b^2}$	$\frac{1}{2} \sqrt{c^2 + d^2}$	THICK	WELDING WT. AT EACH W. BOUND		NOTES
FR#17 BOTTOM - W.T.T.	a = 610	b = 130	8.0	3.5	3.5	450 x 95 x 2 L
" 15 "	"	"	"	"	"	"
" 23 "	"	"	"	"	"	"
" 37 "	"	"	"	"	"	100 x 75 x 8 L
" 27 W.T.T. - MAIN H "	c = 760	d = 100	7.5	"	3.5	"
" G9 TANK <sup>250</sup> "	a = 610	b = 100	7.0	"	"	"
" 51 "	c = 760	d = 100	7.0	"	"	"
" G6 BOTTOM - TANK <sup>250</sup> "	a = 610	b = 200	8.0	"	4.5	"



TUNNELS							
BOTTOM - 1000 AB BL	a = 610	b = 160	8.0	3.5	3.5	4.5	130x75x8 LAY
1000 AB BL - W/RT	"	"	7.5	"	"	"	8x2 2'100 FR. 1/2
LONG BULKHEADS							
BOTTOM - 1000 AB BL	a = 610	b = 200	8.0	3.8	3.5	4.5	
1000 AB BL - TANK EF	"	"	7.5	"	"	"	



CLASS:  
LLOYDS REGISTER # 100 A1, TOWING SERVICES, STRENGTHENED FOR NAVIGATION IN ICE, ELECTRICALLY WELDED,  
PART LONG FRAMING IN BOTTOM AND SIDE SHELL.

DIMENSIONS:	
LENGTH BETWEEN PP	72.00 M
BREADTH MULDED	12.50 M
DEPTH MLD TO FORECASTLE <sup>DE</sup>	7.50 M
" " " MAIN <sup>DE</sup>	5.00 M
MAIN DRAUGHT	4.00 M

NOTES:  
MASTS, WINCHES, WINDLASS, STEERING GEAR  
DAVITS ETC. TO BE SUPPORTED TO SUR-  
VEYORS SATISFACTION.  
BUTTSEAMS IN DECKS MAX. 1 FR. SPAC FROM  
BUTT IN SHELL 0.4 L, AT ENDS 1/4 FR. SP.

AS BUILT. M/s 101  
LONDON COPY.

GODK. AV KLASSEN DEN 8.3-57  
REPERIET DEN

MARINE SALVAGE VESSEL  
LONGITUDINAL  
SECTION AND PLANS.

5  
S.F.  
1:100 : 1:50  
18/12 1956

51-99/102-01 99/102-4



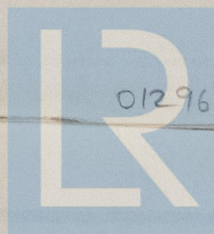
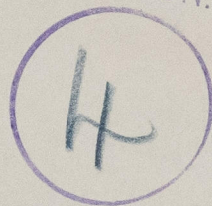
<sup>"</sup>  
AGATAN<sup>"</sup>

F7/B Carl Varr. Gard No. 101.  
Ns "Agatan". ★

Longitudinal Section and Plans  
"As Built".

STOCKHOLM REPORT No. 12248.

RECORDS DEPT.,  
LONDON.



© 2021

012966-012982-0129

Lloyd's Register  
Foundation