

LLOYD'S REGISTER OF SHIPPING

Index No.
(For London Office only.)

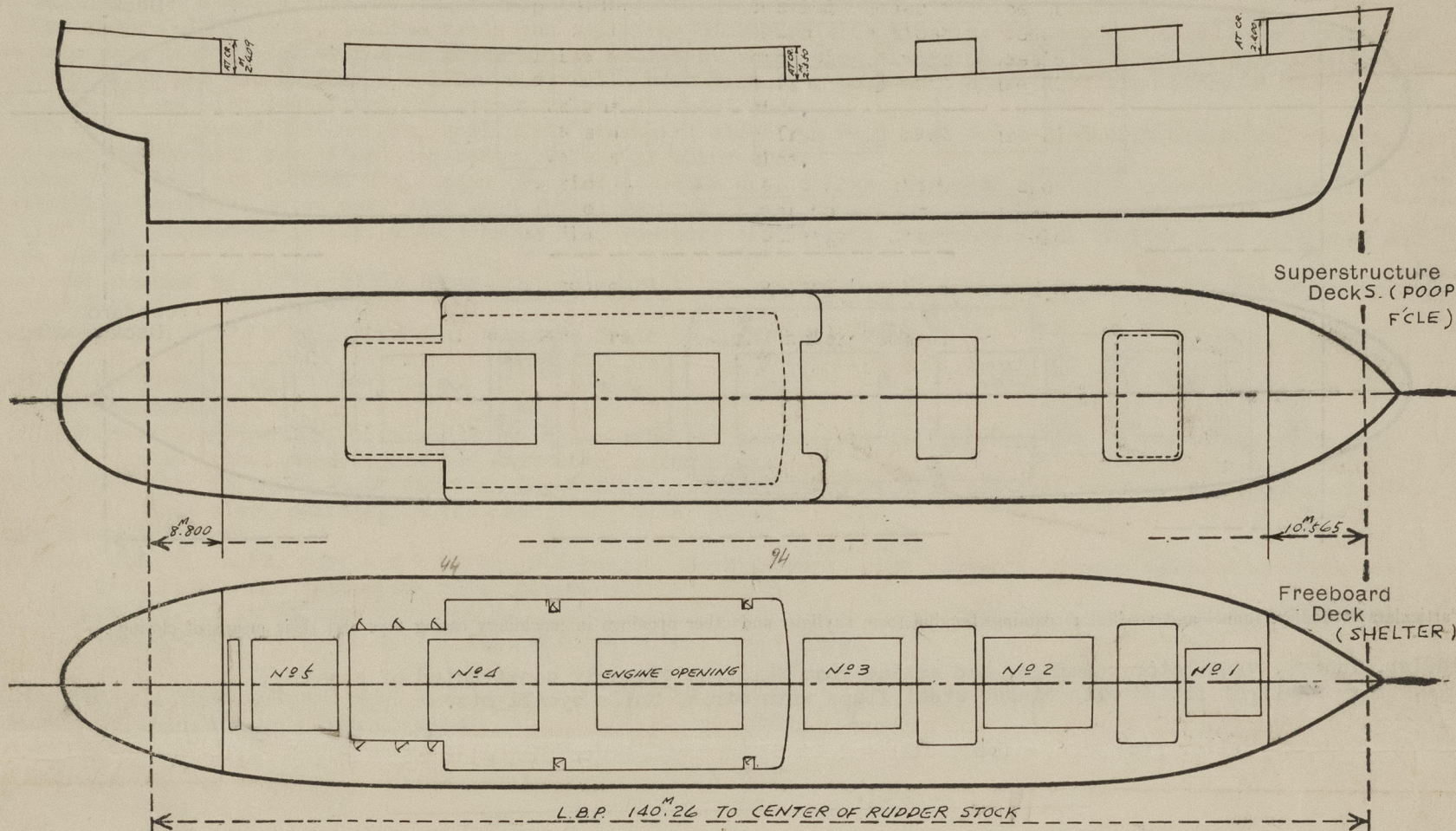
SURVEYS FOR FREEBOARD

F-3522

(CONDITIONS OF ASSIGNMENT)

Ship's Name m.v. "M.H. THAMRIN" Port of Survey Innoshima, Japan
Official Number - Surveyor's Signature Hector McLean
Nationality and Port of Registry Indonesian, Djakarta Date of Survey Whilst Building

Disposition and dimensions of superstructures, trunks, deckhouses, machinery casings and wood sheathing to be inserted in the diagrams and tabular statement:—



Particulars of Superstructures, Trunks, Casings, Deckhouses.

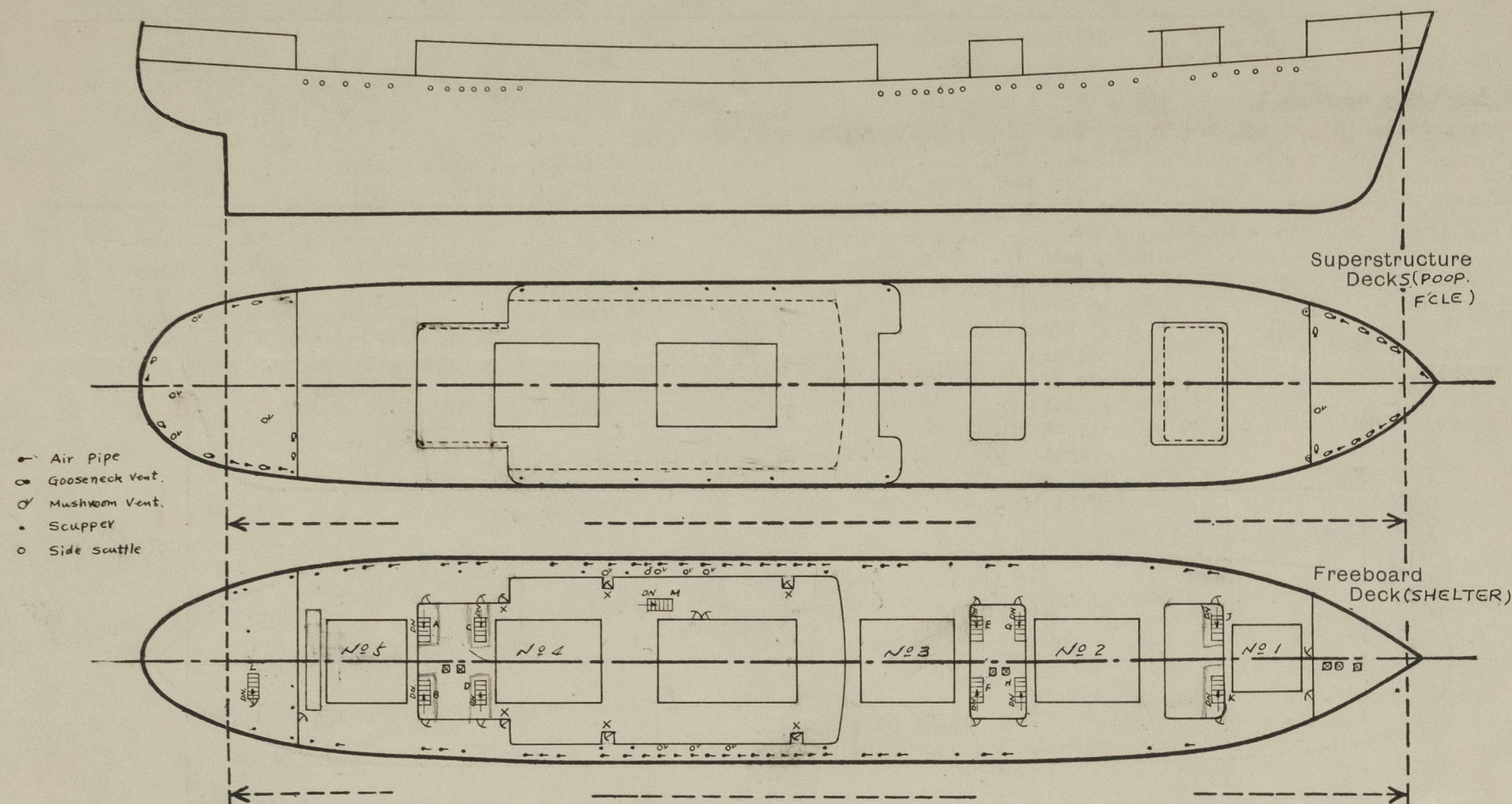
	Coaming	Plating	Stiffeners	Spacing	End Attachments of Stiffeners	Size of Openings	Height of Sills	Height, Beam to Beam
Poop Bulkhead625	9.5 ✓	150 x 90 x 9 ✓ Inv. A.	760 ✓ 680	Welded top & Bottom	1,600x700 ✓	.625 ✓	2.400 ✓
Raised Quarter Deck Bulkhead ...								
Bridge, After Bulkhead ...								
Bridge, Forward Bulkhead ...								
Forecastle Bulkhead445	8 ✓	100x75x7 INV.A. ✓	700 ✓	Both End Free	1.600x.610	.445 ✓	2.400 ✓
Trunk, Aft ...								
Trunk, Forward ...								
Exposed Machinery Casings on Freeboard or Raised Quarter Decks ...								
Exposed Machinery Casings on Superstructure Decks ...								
Machinery Casings within Superstructures not fitted with Class I Closing Appliances ...								
Deckhouses and Pump Room Entrances								

Particulars of Closing Appliances (state if capable of being manipulated from both sides).

Poop Bulkhead ...	1 in No. hinged steel W.T. door operated from both side (Class 1) ✓
Raised Quarter Deck Bulkhead ...	
Bridge, After Bulkhead ...	
Bridge, Forward Bulkhead ...	
Forecastle Bulkhead ...	3 in No. hinged steel W.T. doors operated from both side (Class 1) ✓
Exposed Machinery Casings on Freeboard or Raised Quarter Decks ...	
Exposed Machinery Casings on Superstructure Decks ...	1 in No. hinged insulated steel door 1.650 x 1.200 operated from both side (Class 2) ✓
Machinery Casings within Superstructures not fitted with Class I Closing Appliances ...	
Deckhouses and Pump Room Entrances	

PARTICULARS OF PROTECTION TO OPENINGS, ETC.

The following diagrams should be used to indicate the positions of cargo and coaling hatchways, gangway, cargo and coaling ports, side scuttles, scuppers, ventilators, companionways, etc., which would affect the seaworthiness of the ship :-



Particulars of fiddley, funnel and ventilator coamings, engine room skylight and other openings in machinery casing tops and their means of closing :-

Fiddler, funnel, ventilator coamings, and engine room skylight strongly constructed of steel.
Engine room skylight fitted with hinged steel flaps with strong bulls eye lights.

Particulars of Flush Bunker Scuttles :-

None

Particulars of Companionways :-

(including those incorporated in deckhouses and masthouses)

"A, B, J & K" Companionway to tween deck space (2M000x1M380 clear opening in deck) enclosed by strong steel shelter deck house having steel water tight doors. 1M600x1M000 with sills .675 operable from both sides.

"M" Companionway to provision store (1.980x850 clear opening in deck) enclosed by strong steel deck house.

"X" Entrance to Midships Accommodation having W/T steel doors 1650x750

Particulars of Ventilators in exposed positions on freeboard and superstructure decks :- with sills .445 operable from both sides.

Freeboard Deck:- (Shelter)
8 - 150mm dia. x 8mm thick mushroom vents 915mm high

Freeboard Deck:-
1 - 200mm dia. x 8mm thick mushroom vent 915mm high
10 - 150mm dia. x 8mm thick gooseneck vent 460mm high

Poop Deck:-
3 - 300mm dia. x 9mm thick mushroom vent. 825mm high
1 - 300mm dia. x 9mm thick mushroom vent. 760mm high
7 - 150mm dia. x 8mm thick gooseneck vent 460mm high

"C, D, E, F, J & K" companionway to tween deck space (2M000x1M580 clear opening in deck) enclosed by strong steel shelter deck house having steel water tight doors 1M600x1M200 with sill .675 operable from both sides.

"L" Companionway to steering gear compartment (830x2.000 clear opening in deck) enclosed by strong steel shelter deck house having steel water door 1.650x.650 with sills .280 operated from both sides.

"X" Entrance to Midships Accommodation having W/T steel doors 1650x750 with sills .445 operable from both sides.

All vent. coamings 915mm high are efficiently stayed by brackets to the deck.

All mushroom ventilators are fitted with steel screw down heads, and rubber packing.

Gooseneck ventilators are fitted with hinged cast iron flaps with rubber packing and secured W/T by butterfly nut.

Particulars of Air Pipes in exposed positions on freeboard, raised quarter, or superstructure decks :-

Freeboard Deck:- (Shelter)

12 - 130mm dia. x 915mm high
24 - 100mm dia. x 915mm high
6 - 90mm dia. x 915mm high
1 - 80mm dia. x 915mm high
7 - 50mm dia. x 915mm high
5 - 25mm dia. x 915mm high

Freeboard Deck:-

1 - 100mm dia. x 460mm high
1 - 90mm dia. x 460mm high
1 - 80mm dia. x 460mm high
1 - 50mm dia. x 460mm high

Poop Deck:-

1 - 100mm dia. x 460mm high
2 - 90mm dia. x 460mm high
3 - 80mm dia. x 460mm high

All air pipes from oil fuel tanks are fitted with flame proof wire gauge diaphragm.

All air pipes fitted with closing type bonnet head.

Particulars of Gangway Cargo and Coaling Ports :-

None.

Particulars of Scuppers and Sanitary Discharge Pipes :-

2-50mm dia. drains, 2-130mm soils (P. side) and 1-100mm dia. soil, 2-70mm dia. drains (S. side) from No.1 mast house accommodation discharge overboard below main deck each fitted with C.S.N.R.V. at ships side.
2-70mm drains, 1-130mm and 1-150mm dia. soils (P. side) and 2-70mm dia. drains, 2-100mm soils from No.2 mast house accommodation led overboard below main deck each fitted with C.S.N.R.V. at ship's side.
1-100mm dia. and 1-50mm dia. drain (P. & S.) from midships accommodation led overboard below the main deck each fitted with C.S.N.R.V. at ships side.
1-130mm and 1-150mm dia. drain and soil (P. side) from midships accommodation led overboard below the main deck each fitted with cast steel sluice valves at ships side always accessible under service conditions.
1-100mm dia., 1-150mm dia., 1-130mm drain and soil from starboard side midships accommodation led overboard below the main deck each fitted with cast steel sluice valves at ships side always accessible under service conditions.
2-70mm dia. drains and 1-100mm x 1-150mm dia. soils port side from No.3 mast house discharge overboard below main deck each fitted with cast steel non return valves at ships side.
2-70mm dia. drains and 2-100mm dia. soil pipes starboard side from No.3 mast house discharge overboard below main deck each fitted with cast steel non-return valves at ships side.
1-100mm dia. soil and 1-100mm dia. drain (P. side), 2-50mm dia. drains starboard side from poop accommodation discharging overboard below main deck each fitted with cast steel non-return valve at ships side.
Shelter deck drained by 16 (8P. & 8S.) 100mm dia. scuppers discharging overboard below shelter deck with open end at ships side.
Poop deck drained by 3 (1P. & 2S.) 100mm dia. scuppers, 1 led overboard with open end at ships side and 2 led to open shelter deck.
Forecastle deck 2 (1P. & 1S.) 80mm dia. scuppers drain to open shelter deck.

Cont'd (Overleaf)

Particulars of Side Scuttles and Deadlights :-

Below Freeboard Deck:-

54 - 300mm dia. (27 in No. port and 27 in No. starboard) opening bronze side scuttles in tween deck space with cast steel dead lights and cast steel outer plugs.
10 - 250mm dia. (5 in No. port and 5 in No. starboard) opening bronze side scuttles in tween deck space with cast steel dead lights and cast steel outer plugs.

Above Freeboard Deck:-

3 - 300 dia. (1 in No. port and 2 in No. starboard) opening bronze side scuttles in poop space with cast steel dead lights and cast steel outer plugs.
5 - 250mm dia. (3 in No. port and 1 in No. starboard & 1 in No. poop front) opening bronze side scuttles in poop space with cast steel dead lights and cast steel outer plugs.

Vertical distance of Sill of lowest Side Scuttle above top of keel 11M04
Distance from amidships to centre of lowest Side Scuttle 1M60

Particulars of Guard Rails and Bulwarks :-

Freeboard Dk. (Shelter) Bulwark 1M080 high with 180 x 9.5 BPL top rail and 9mm FL stays 1,800 mm apart.
Freeboard Deck:- 3 guard rails with stanchions (65 x 16 F.B.) 1M000 high spaced about 1M400 apart.
Poop Deck:- 3 guard rails with stanchions (65 x 16 F.B.) 1M000 high spaced about 1M700 apart.

Particulars of Gangways, Lifelines, etc. :-

24mm Manila Lifelines fitted P. & S. shelter deck fore and aft, attached to permanent eyeplates.

Particulars of Freeing Arrangements.

	Length of Bulwark	Height of Bulwark	Size of Freeing Ports	Number each side	Area each side	Rule area each side
After Well ...	24,800 m.		24,800			
Shelter Deck	120M895	1.080	99M715 x .230	1	5.74 m ²	1.506
Forward Well ...	52,095 m.		47,645 x .230		10.96 m ²	3.166

State position of each freeing port ... (After Well ... Fr. 18 1/2 - fr. 65) Ht. above deck edge = 250 mm
(F. and A. position and height above deck edge) (Forward Well ... Fr. 79 - Fr. 160 1/2)

State whether the freeing ports are fitted with shutters, bars, or rails, and give particulars of such :- Open

Additional area where sheer is less than standard.

PARTICULARS OF PROTECTION TO OPENINGS, ETC.

HATCHWAYS ON FREEBOARD AND SUPERSTRUCTURE DECKS.

Description of Hatchway		Freeboard Deck (Shelter)					Tonnage Opening	From Dk.			
		No.1	No.2	No.3	No.4	No.5					
Dimensions of Hatchway		8.220x5.600	12.000x7.000	10.400x7.000	12.000x7.000	9.600x7.000	1.360 x 7.380	12.000x7.000			
COAMINGS	Height above Deck	1.000	1.050	1.000	Trunk	1.000	230	760			
	Thickness	13	13	13	Hatch	13	11	11			
	Stiffeners	13	13	13		13	11	11			
	Brackets, Stays, Ends	300x90x11/16	300x90x11/16	300x90x11/16	300x90x11/16	300x90x11/16	180x9.5 BPL	180x9.5 BPL			
HATCH BEAMS	Number	5	5	5		5	10	10			
	Spacing	260mm	260mm	260mm		260mm	1.200x1.600	1.200x1.600			
	Scantling and Sketch	MacGregor steel water tight hatch covers in 5 sections each 8mm thick with 2 webs 260mm x 110mm x 8mm welded face bars, ends 300mm x 8mm with 110mm x 16mm face bar as per approved drawing.	MacGregor steel water tight hatch covers in 6 sections each 8mm thick with 2 webs 300mm x 8mm with 180mm x 16mm welded face bars, ends 300mm x 8mm with 110mm x 16mm face bar as per approved drawing.	MacGregor steel water tight hatch covers in 5 sections each 8mm thick with 2 webs 300mm x 8mm with 180mm x 16mm welded face bars, ends 300mm x 8mm with 110mm x 16mm face bar as per approved drawing.		MacGregor steel water tight hatch covers in 6 sections each 8mm thick with 2 webs 300mm x 8mm with 180mm x 16mm welded face bars, ends 300mm x 8mm with 110mm x 16mm face bar as per approved drawing.	Closed by an 8mm plate stiffened by 13, 100mm x 75mm x 7mm Inv. Angle Stiffeners secured by 48 hook bolts and rubber packing.	160x24 400x11.5 160x24 100			
	Bearing Surface										
FORE AND AFTERS	Number										
	Spacing										
	Unsupported Lengths										
	Scantling* and Sketch										
HATCH COVERS	Material	Steel	Steel	Steel		Steel	Wood	Wood			
	Thickness	8mm	8mm	8mm		8mm	70	70			
	How fitted	48 in No.				48 in No.	F.&A.	F.&A.			
	Bearing Surface	Hook Bolt				Hook Bolt	73	73			
Spacing of Cleats		750	900	900		900	380	.585			
Number of Tarpaulins		Nil	Nil	Nil		Nil		4			
<p>*Are wood fore and afters steel shod at all bearing surfaces? -</p> <p>Are battens and wedges efficient and in good condition? Yes</p> <p>Are tarpaulins in good condition and in accordance with rule requirements? Yes</p> <p>Are lashings provided in accordance with rule requirements? Yes</p> <p>Are wood covers fitted with galvanised end bands? Yes</p> <p>CROSS JOINT WEDGES SPACED 750 MM No.1 HATCH, 900 MM REMAINDER</p>											

Particulars of any special features:— (Timber Deck-cargo Fittings, Skylights, Sewage Systems, Ash Ejectors, Rubbish Shoots, etc.)

- Access hatches on shelter deck - 4 inside mast houses 600 x 600 x 90 coaming with hinged N.W/T steel hatch cover. store.
- Access hatches on shelter deck inside forecandle - 1 at 570 x 520 x 90 coaming with hinged N.W/T steel hatch cover to bosuns/
- 1 at 570x520x90 coaming with hinged W/T steel hatch cover to chain locker.
- 1 at 550 x 450 x 90 coaming with hinged N.W/T steel hatch cover to No.1 hold.
- Rope hatch on Forecandle = 600 dia. steel, coaming 610 high 10mm thick fitted with hinged steel cover 10mm thick secured W/T by 5 toggles.
- Rope Hatch on Poop = 600mm dia. steel coaming 460 high 10mm thick fitted with hinged steel cover 10mm thick secured W/T by 5 toggles.
- 2 - Ventilation trunk openings to holds and tween decks on forecandle aft bulkhead size 21½"x 23", coaming height 5'-0" opening fitted with 6mm thick hinged steel cover secured W/T by 10 toggles.
- 2 - ventilation trunk openings to holds and tween deck, 1P & 1S on sides of mast houses Nos. 1,2,3 on shelter deck, size 35½" x 25½" coaming ht. 5'-4" openings fitted with 6mm thick hinged steel cover secured W/T by 10 toggles.

Particulars of Scuppers and Sanitary Discharge Pipes:- (Continued)

Forecandle space drained by 25 mm dia. scupper holes, 1P & 1S fitted with bronze screwed plugs permanently attached by chains.

Steering engine room fitted with bilge wells drained by 5 mm dia. suction with bilge eductor, discharging overboard below main deck with 50mm., swing check valve fitted at ships side (S.) EQUIV. TO 2 N.R. VALVES X

Bosun's store and chain locker fitted with bilge wells and drained by 50mm dia. suction with bilge eductor, discharging overboard below the main deck with 50mm swing check valve fitted at ships side (S.) EQUIV. TO 2 N.R. VALVES X

Main deck store spaces amidships drained by 10-50mm dia. deck scuppers led to holds bilge wells with open end.

Main deck Refrig. Chambers drained by 12-50mm dia. scuppers led to engine room bilge wells fitted with cast iron self closing cocks at lower ends. OVERBOARD BELOW MAIN DECK THROUGH 2 N.R. VALVES ACCESSIBLE WHEN PILGRIMS CARRIED, BLANKED OFF WHEN NO indicator.

Main deck W.C.s and shower spaces drained to hold bilge wells through 24-50mm dia. deck scuppers. PILGRIMS CARRIED

Main deck cargo spaces drained to hold bilge wells through 14-50mm dia. dk scupper controlled from shelter dk with open/shut/

2 - 130mm dia. deck scuppers 1P. & 1S. from tonnage well led overboard below main deck with cast steel non-return valves at ships side controlled from shelter deck with open/shut indicator.

LAUNDRY SPACE ON MAIN DECK DRAINED BY 70 MM PIPE FITTED C.S. N.R. VALVE LED TO 130 MM. DRAIN P. FROM SPACES ABOVE SHELTER DECK



© 2021

Lloyd's Register
Foundation