

## LLOYD'S REGISTER OF SHIPPING

OWNERS' C.11 ISSUED

11 JUL 1961

Index No.

(For London Office only.)

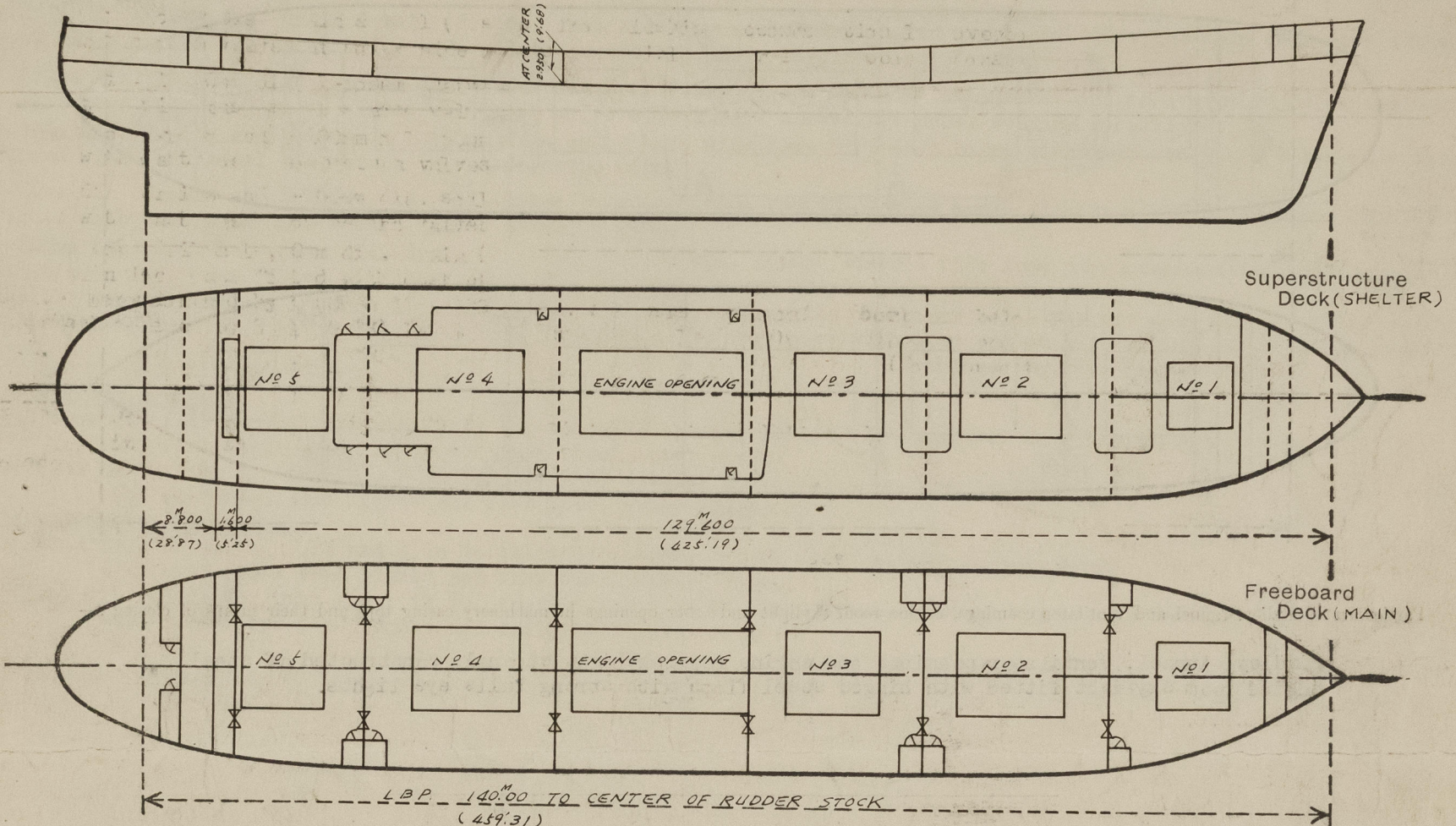
F-8522

## SURVEYS FOR FREEBOARD

(CONDITIONS OF ASSIGNMENT)

Ship's Name M.V. "M.H. THAMRIN"Port of Survey Innoshima, JapanOfficial Number 1000Surveyor's Signature Arthur McLeanNationality and Port of Registry Indonesian, DjakartaDate of Survey Whilst building.

Disposition and dimensions of superstructures, trunks, deckhouses, machinery casings and wood sheathing to be inserted in the diagrams and tabular statement:—



Particulars of Superstructures, Trunks, Casings, Deckhouses.

	Coaming	Plating	Stiffeners	Spacing	End Attachments of Stiffeners	Size of Openings	Height of Sills	Height, Beam to Beam
Poop Bulkhead ...	-	9.5	150x90x9 Inv.A.	.740 .600	Welded with Ekt. top & bottom	-	-	2,950
Raised Quarter Deck Bulkhead ...								
Bridge, After Bulkhead ...	600	7.5	125x75x7 Inv.A.	.749	Both ends free	2 @ 1,370x 970	600	2,950
Bridge, Forward Bulkhead ...								
Forecastle Bulkhead ...								
Trunk, Aft ...								
Trunk, Forward ...								
Exposed Machinery Casings on Freeboard or Raised Quarter Decks ...								
Exposed Machinery Casings on Superstructure Decks ...								
Machinery Casings within Superstructures not fitted with Class I Closing Appliances ...								
Deckhouses and Pump Room Entrances								

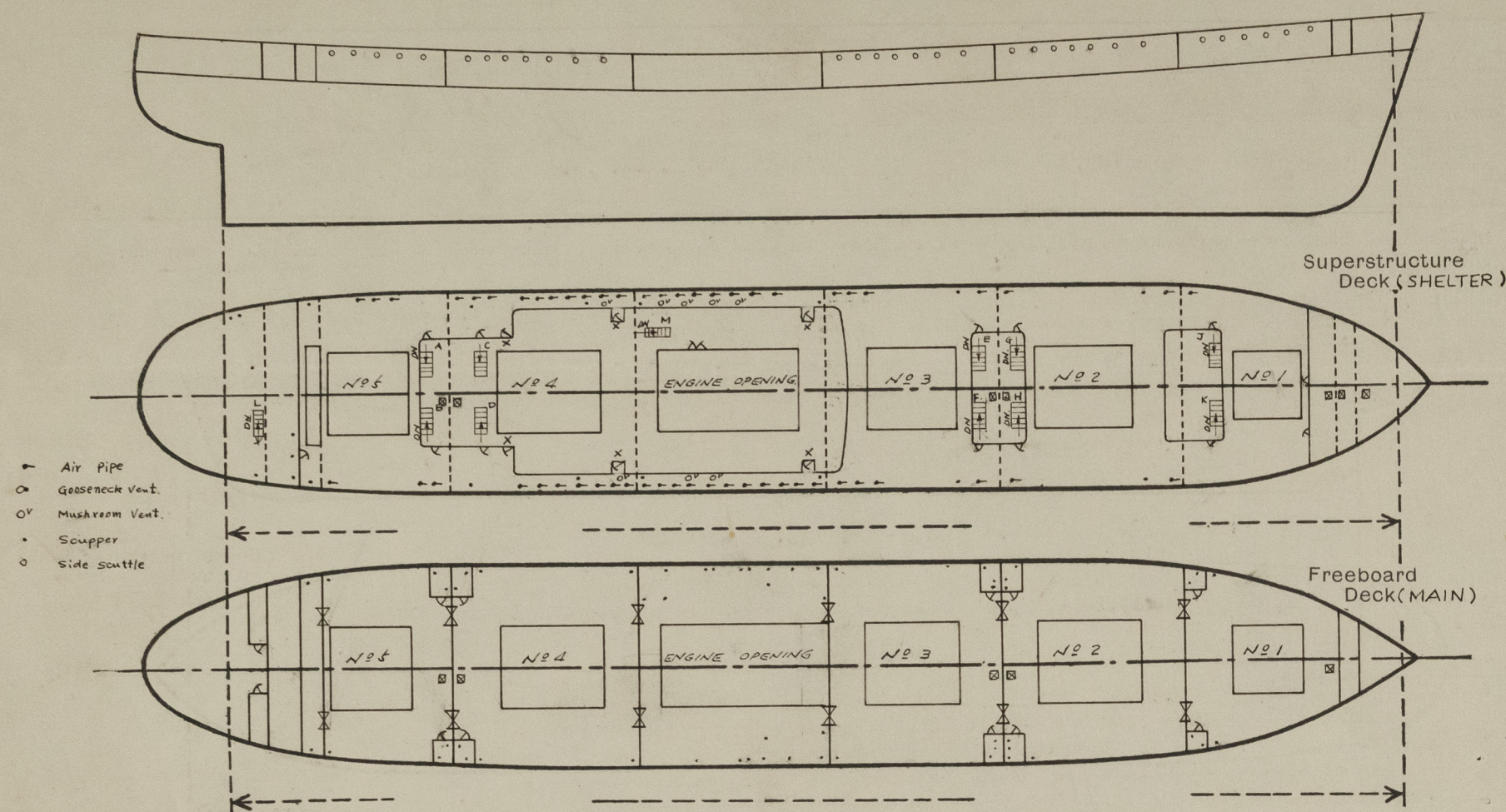
Particulars of Closing Appliances (state if capable of being manipulated from both sides).

Poop Bulkhead ...	
Raised Quarter Deck Bulkhead ...	
Bridge, After Bulkhead ...	
Bridge, Forward Bulkhead ...	Steel stormboards in full ht. welded channels. (Class 2).
Forecastle Bulkhead ...	
Exposed Machinery Casings on Freeboard or Raised Quarter Decks ...	
Exposed Machinery Casings on Superstructure Decks ...	1 in No. hinged insulated steel door 1,650 x 1,200 operated from both sides (Class 2).
Machinery Casings within Superstructures not fitted with Class I Closing Appliances ...	
Deckhouses and Pump Room Entrances	



## PARTICULARS OF PROTECTION TO OPENINGS, ETC.

The following diagrams should be used to indicate the positions of cargo and coaling hatchways, gangway, cargo and coaling ports, side scuttles, scuppers, ventilators, companionways, etc., which would affect the seaworthiness of the ship:—



Particulars of fiddle, funnel and ventilator coamings, engine room skylight and other openings in machinery casing tops and their means of closing:—

Fiddle, tunnel, ventilator coamings and engine room skylight strongly constructed of steel.  
Engine room skylight fitted with hinged steel flaps with strong bulls eye lights.

Particulars of Flush Bunker Scuttles:—

None.

Particulars of Companionways:—

(including those incorporated in deckhouses and masthouses)  
A.B.J.K. "Companionway to tween deck spaces.  
(2,000x1,380 clear opening in deck) enclosed by strong steel deck house having steel water tight doors 1,600x1,000 with sills .675 operated from both sides.

X = Entrance to Midships Accommodation having W/T steel doors 1650x750 with sills .445 operable from both sides.  
Particulars of Ventilators in exposed positions on freeboard and superstructure decks:—

Superstructure deck (Shelter)

8-150M dia. x 8mm thick mushroom vents 915mm high.

Superimposed superstructure (Forecastle)

1-200mm dia. x 8mm thick mushroom vent 915mm high.

10-150mm dia. x 8mm thick gooseneck vent 460mm high.

Superimposed superstructure (Poop)

3-300mm dia. x 9mm thick mushroom vent 825mm high.

1-300mm dia. x 9mm thick mushroom vent 760mm high.

7-150mm dia. x 8mm thick gooseneck vent 460mm high.

"C", "D", "E", "F", "G", "H" Companion way to tween deck space (2,000x1,580 clear opening in deck) enclosed by strong steel deck house having steel water tight doors 1,600x1,200 with sills .675 operable from both sides.

"L" Companionway to steering gear compartment (830x2,000 clear opening in deck) enclosed by strong steel deck house having steel weather tight door 1,650x610 with sills .280 operable from both sides.

"M" Companionway to provision store (1,980x850 clear opening in deck) enclosed by strong steel deck house.

All mushroom ventilators fitted with hinged cast iron flaps, with rubber packings and secured W/T by butterfly nuts.  
All vent coamings 915mm high are efficiently stayed by brackets to the deck.  
Gooseneck ventilators are fitted with hinged cast iron flaps with rubber packing and secured W/T by butterfly nuts.

Particulars of Air Pipes in exposed positions on freeboard, raised quarter, or superstructure decks:—

Superstructure deck (Shelter)

12-130mm dia. x 915mm high.

24-100mm dia. x 915mm high.

6- 90mm dia. x 915mm high.

1- 80mm dia. x 915mm high.

7- 50mm dia. x 915mm high.

5- 25mm dia. x 915mm high.

Superimposed Superstructure decks

Forecastle - 1-100mm dia. x 460mm high.

1- 90mm dia. x 460mm high.

1- 80mm dia. x 460mm high.

1- 50mm dia. x 460mm high.

1-100mm dia. x 460mm high.

2- 90mm dia. x 460mm high.

3- 80mm dia. x 460mm high.

Poop

All air pipes from Oil Fuel Tanks are fitted with flame proof wire gauze diaphragm.  
All air pipes fitted with closing type bonnet head.

Particulars of Gangway Cargo and Coaling Ports:—

None.

Particulars of Scuppers and Sanitary Discharge Pipes:—

2-50mm Dia. drains, 2-130mm soils (P.side) and 1-100mm Dia. soil, 2-70mm dia. drains (S. side) from No.1 Mast house accommodation discharge overboard below main deck each fitted with C.S.N.R.V. at ships side.

2-70mm drains, 1-130mm and 1-150mm dia. soils (P.side) and 2-70mm dia. drains, 2-100mm soils from No.2 Mast house accommodation led overboard below Main deck each fitted with C.S.N.R.V. at ships side.

1-100mm dia. and 1-50mm dia. drain (P. & S.) from Midships accommodation led overboard below the main deck each fitted with C.S.N.R.V. at ships side.

1-130mm & 1-150mm dia. drain & soil (P.side) from midships accommodation led overboard below the main deck each fitted with cast steel sluice valves at ships side always accessible under service conditions.

1-100mm dia., 1-150mm dia. 1-130mm drain and soil from starb'd side midships accommodation led overboard below the main deck each fitted with cast steel sluice valves at ships side always accessible under service conditions.

2-70mm dia. drains and 1-100mm x 1-150mm dia. soils port side from No.3 mast house discharge overboard below main deck each fitted with cast steel non return valves at ships side.

2-70mm dia. drains and 2-100mm dia. soil pipes starboard side from No.3 mast house discharge overboard below main deck each fitted with cast steel non return valves at ships side.

1-100mm dia. Soil & 1-100mm dia. drain (P.side), 2-50mm dia. drains starb'd side from poop accommodation discharging overboard below main deck each fitted with cast steel non return valve at ship's side.

Shelter deck drained by 16(8P & 8S), 100mm dia. scuppers discharging overboard below shelter deck with open end at ship's side Poop deck drained by 3 (1P & 2S), 100mm dia. scuppers 1 led overboard with open end at ship's side and 2 led to open shelter deck.

Particulars of Side Scuttles and Deadlights:—

Above Freeboard deck

54-300mm dia. (27 in No. port and 27 in No. starb'd) opening bronze side scuttles in F'cle space with cast steel dead lights and cast steel outer plugs.

10-250mm dia. (5 in No. port and 5 in No. starb'd) opening bronze side scuttle in F'cle space with cast steel dead lights and cast steel outer plugs.

Above Superstructure deck

3-300mm dia. (1 in No. port and 2 in No. starb'd) opening bronze side scutter in Poop space with cast steel dead lights and cast steel outer plugs.

5-250mm dia. (3 in No. port and 1 in No. starb'd and 1 in No. Poop front, opening bronze side scutter in poop space with cast steel dead lights and cast steel outer plugs.

Vertical distance of Sill of lowest Side Scuttle above top of keel 11.04M  
Distance from amidships to centre of lowest Side Scuttle 1.60M

Particulars of Guard Rails and Bulwarks:—

Superstructure deck (Shelter) Bulwark 1.080M high with 180x9.5 BPL top rail and 9mm PL stays 1,800mm apart.

Superimposed superstructure decks

Fore-castle - 3 guard rails with stanchions (65-16F.B.) 1.000M high spaced about 1.400M apart.

Poop - 3 guard rails with stanchions (65-16F.B.) 1.000M high spaced about 1.700M apart.

Particulars of Gangways, Lifelines, etc.:—

24mm Manila Lifelines fitted P. & S. on Shelter deck foreward and Aft attached to permanent eyeplates.

### Particulars of Freeing Arrangements.

	Length of Bulwark	Height of Bulwark	Size of Freeing Ports	Number each side	Area each side	Rule area each side
After Well ...	120.895M	1.080M	99.715M x 2.30	1		
Shelter deck						
Forward Well ...						

State position of each freeing port ... (After Well: Fr.18-Fr.65) Ht. above dk. edge = 250mm.  
(F. and A. position and height above deck edge) (Forward Well: Fr.79-Fr.160)

State whether the freeing ports are fitted with shutters, bars, or rails, and give particulars of such:— Open.

Additional area where sheer is less than standard.



**PARTICULARS OF PROTECTION TO OPENINGS, ETC.**

HATCHWAYS ON FREEBOARD AND SUPERSTRUCTURE DECKS.													
Freeboard Dk. (Main) * Superstructure Dk. (Shelter)													
Description of Hatchway			No.1	No.2	No.3	No.4	No.5	No.1	No.2	No.3	No.5	Tonnage opening	
Dimensions of Hatchway			8,905 x 5,600	12,800 x 7,000	11,200 x 7,000	12,800 x 7,000	9,600 x 7,000	8,220 x 5,600	12,000 x 7,000	10,400 x 7,000	9,600 x 7,000	1,360 x 7,380	
COAMINGS	Height above Deck	...	.230	.230	.230	.230	.230	1.000	1.000	1.000	1.000	.230	
	Thickness	{ Sides ... Ends ...	13 13	13 13	13 13	13 13	13 13	13 13	13 13	13 13	13 13	11 11	
	Stiffeners ...	{ Sides ... Ends ...	60 x 30	60 x 30	60 x 30	60 x 30	60 x 30	300 x 90	300 x 90	300 x 90	300 x 90	-	
	Brackets, Stays	{ Sides ... Ends ...	HRB	HRB	HRB	HRB	HRB	180 x 95 BPL	180 x 95 BPL	180 x 95 BPL	180 x 95 BPL	-	
HATCH BEAMS	Number	...	6	7	6	9	5	"Macgregor" Steel water tight hatch covers in 5 sections each 8mm thick with 2 webs 260mm x 8mm with 140mm x 6mm welded face bars, ends 260mm x 8mm with 110mm x 6mm face bar as per approved drawing.					-
	Spacing	...	1,370	1,600	1,600	1,280	1,600						
	Scantling and Sketch	...	150x14	250x14	250x14	280x24	250x14						
	Bearing Surface	...	140x24	250x24	250x24	250x24	250x24						
FORE AND AFTERS	Number	...	-	-	-	-	-	"Macgregor" Steel water tight hatch covers in 5 sections each 8mm thick with 2 webs 300mm x 8mm with 180mm x 6mm welded face bars, ends 300mm x 8mm with 110mm x 6mm face bar as per approved drawing.					-
	Spacing	...	-	-	-	-	-						
	Unsupported Lengths	...	-	-	-	-	-						
	Scantling* and Sketch	...	-	-	-	-	-						
HATCH COVERS	Material	...	Wood	Wood	Wood	Wood	Wood	"Macgregor" Steel W/T hatch cover in 6 sections each 8mm thick with 2 webs 300mm x 8mm with 180mm x 6mm welded face bars, ends 300mm x 8mm with 110mm x 6mm face bar as per approved drawing.					Wood 60 F & A 75
	Thickness	...	70	70	70	70	70						
	How fitted	...	F & A	F & A	F & A	F & A	F & A						
	Bearing Surface	...	68	118	118	118	118						
Spacing of Cleats			.573	.595	.605	.595	.581	.750	.900	.900	.900	Eye plates for hemp lashings	
Number of Tarpaulins			4	4	4	4	4	Nil	Nil	Nil	Nil		
*Are wood fore and afters steel shod at all bearing surfaces? Yes													
Are battens and wedges efficient and in good condition? Yes													
Are tarpaulins in good condition and in accordance with rule requirements? Yes													
Are lashings provided in accordance with rule requirements? Yes													
Are wood covers fitted with galvanised end bands? Yes													
CROSS JOINT WEDGES SPACED 750 MM No.1 HATCH, 900 MM REMAINDER													
Cross joint wedges													

Particulars of any special features:— (Timber Deck-cargo Fittings, Skylights, Sewage Systems, Ash Ejectors, Rubbish Shoots, etc.)

Access hatches on Main deck- 4 at 600x600x90mm coaming with hinged W/T Steel hatch covers also 1 forward 550x450x90 coaming with hinged W/T S.H.C.

Access hatch on Shelter deck - 4 inside mast houses 600x600x90 coaming with hinged N.W/T Steel hatch cover.

Access hatches on Shelter deck inside forecandle - 1 at 570x520x90 coaming with hinged N.W/T Steel hatch cover to bosuns store.  
 1 at 570x520x90 coaming with hinged W/T Steel hatch cover to chain locker.  
 1 at 550x450x90 coaming with hinged N.W/T Steel hatch cover to No.1 Hold.

Rope hatch on Forecandle - 600" dia. steel, coaming 610 high 10mm thick fitted with hinged steel cover 10mm thick secured W/T by 5 toggles.

Rope hatch on Poop - 600" dia. steel, coaming 460 high 10mm thick fitted with hinged steel cover 10mm thick secured W/T by 5 toggles.

Tonnage openings in Tween decks - 10 at 1370 x 970, coaming ht. 600mm with steel storm boards in full ht. channels.

**Mechanical Ventilation**

2 - Ventilation trunk openings to Holds and tween decks on Forecandle Aft bulkhead size 31½x23", coaming height 5'-0" opening fitted with 6mm thick hinged steel cover secured W/T by 10 toggles.

2 - Ventilation trunk openings to Holds and tween deck, 1 P. & 1 S. on sides of Mast houses Nos.1,2,3 on Shelter deck, sizes 35½" x 25½" coaming ht. 5'-4", openings fitted with 6mm thick hinged steel cover secured W/T by 10 toggles.

**Particulars of Scuppers & Sanitary Discharge Pipes: (Cont'd/....)**

Forecandle deck 2(1P & 1s) 80mm dia. scuppers drain to open shelter deck.

Forecandle space drained by 25mm dia. scupper holes,  
 1P & 1S fitted with bronze screwed plugs permanently attached by chains.

Steering Engine Room fitted with bilge wells drained by 50mm dia. suction with bilge eductor discharging overboard below main deck with 50mm swing check valve fitted at ship's side (S). *EQUIV. TO 2 N.R. VALVES*

Bosun's store and chain locker fitted with bilge wells and drained by 50mm dia. suction with bilge eductor, discharging overboard below the main deck with 50mm swing check valve fitted at ship's side (S). *EQUIV. 2 N.R. VALVES*

Main deck store spaces amidships drained by 10-50mm dia. deck scuppers led to Hold bilge wells with open end.

Main deck Refrig. Chambers drained by 12-50mm dia. scuppers led to Engine Room bilge wells fitted with cast iron self closing cocks at Lower ends.

Main deck W.C.'s and Shower spaces drained to hold bilge wells through 24-50mm dia. deck scuppers. *OVERBOARD THROUGH 2 N.R. VALVES ACCESSIBLE WHEN PILGRIMS CARRIED, BLANKED OFF WHEN NO PILGRIMS CARRIED* indicator.

Main deck cargo spaces drained to hold bilge wells through 14-50mm dia. dk scupper controlled from shelter dk with open/shut/2-130mm dia. deck scuppers 1P & 1S from Tonnage well led overboard below main deck with cast steel non-return valves at ship's side controlled from shelter deck with open/shut indicator.

*LAUNDRY SPACE ON MAIN DECK DRAINED BY 70MM PIPE FITTED C.S. N.R. VALVE LED TO 130MM DRAIN FROM SPACES ABOVE SHELTER DECK*



© 2021

Lloyd's Register Foundation