

SINGLE SCREW CARGO MOTORSHIP
BEING CAPABLE OF CARRYING PILGRIMS
CLASS LR * 100A1 * LMC
 "VERTICAL FRAMING AT BUTT & DECK"

PRINCIPAL DIMENSIONS

LENGTH (P.P.)	140.00 (151.15)
BREADTH (MID)	19.40 (21.74)
DEPTH (MID, TOP OF KEEL TO SHELTER DECK)	12.20 (13.40)
DRAFT (DESIGNED)	8.70 (9.70)
DRAFT (MID, TOP OF KEEL) (WHEN CLOSED)	8.70 (9.70)
SCANTLING DRAFT (MID, TOP OF KEEL)	8.70 (9.70)

EQUIPMENT NUMBER

L.C. (A) - 0.85 (D.C.)	133.96 (144.87) = 434.24
F.C. (E)	0.85 (0.85) = 0.75
POOP	0.85 (0.85) = 1.08
SHELTER DECK HOUSE	0.75 (2.6) = 58.50
PROM. DECK HOUSE	0.75 (2.45) = 32.25
BRIDGE DECK HOUSE	0.75 (2.45) = 32.25
NAV. BRIDGE HOUSE	0.75 (2.35) = 30.32
TOTAL	438.17

EQUIPMENT LETTER: 8+

- EQUIPMENT**
- 3 STOCKLESS BOWER ANCHORS 4,155 KG EACH
 - 1 STUD LINK CHAIN CABLE (MID) 550" x 57mm
 - 1 TOWLINE, STEEL WIRE (62.24) 220" x 44mm
 - 4 MOORING ROPES, STEEL WIRE (0.24) 200" x 24mm

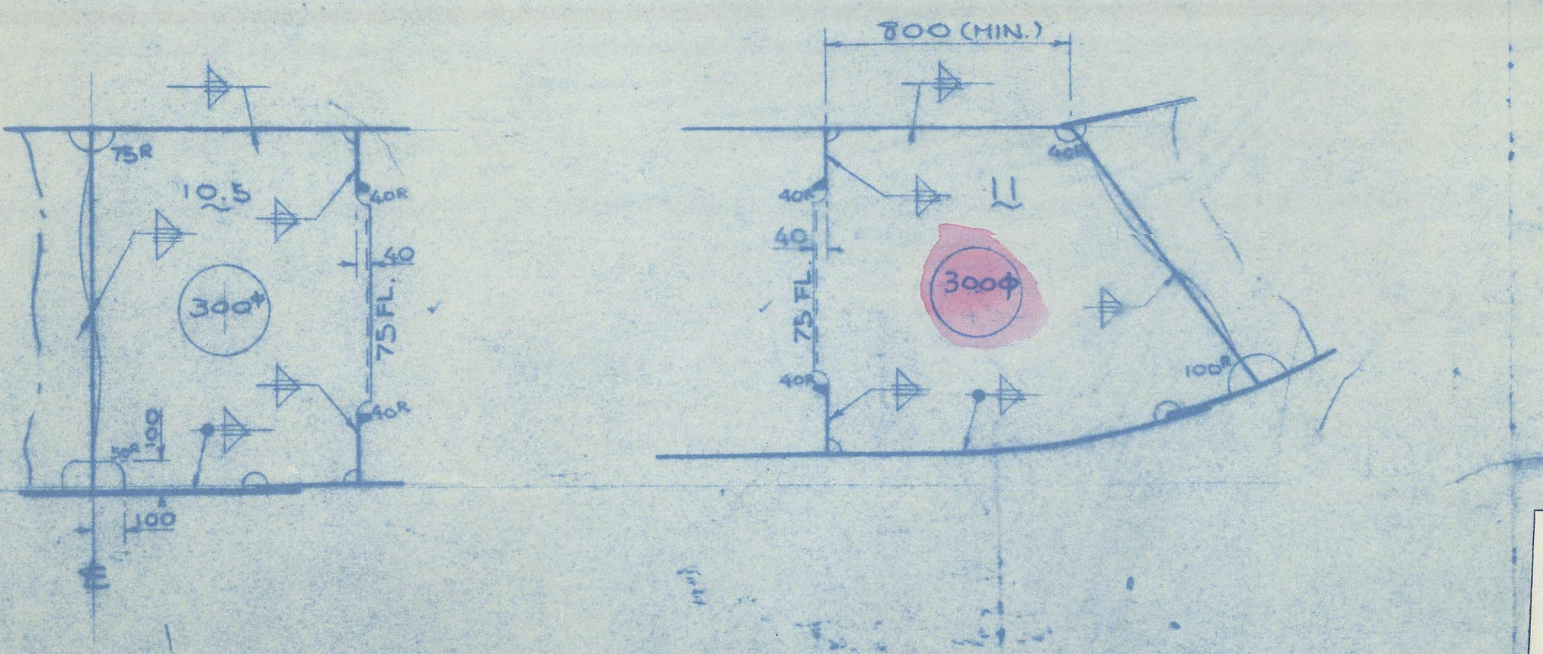
- NOTES FOR SHELL PLATES**
- F.C. SIDE PLATES 11
 - POOP SIDE PLATES 12
 - SHELL PLATES FOR 0.05L FROM FORE END 13
 - AFT 14
 - BOTTOM FORWARD (WHEN 42" HULL) 15
 - PLATES CONNECTED TO STERN FRAME 16
 - PLATE STEM (WHEN FINISHED) 17
 - BELOW L.W.L. 17.5
 - ABOVE L.W.L. 17.5

- NOTES FOR MATERIAL**
- * MARKED PLATES ARE TO BE OF STEEL WHICH HAS BEEN SPECIALLY APPROVED UNDER P5 OF THE RULE (FOR 0.4L AMIDSHIPS), AND ALSO DECK PLATES AT CORNER OF SHELTER DECK OPENING OUTSIDE 0.4L AMIDSHIPS WHERE THICKNESS EXCEEDS 20.5mm.

- WELDE KEEL**
- LENGTH 36" AMIDSHIPS
 - DEPTH 330
 - FACE BAR 250 x 12 B.P.
 - CONNECTING ANGLE 150.38 x 12 ANGLE (CUT FROM 150.41 x 12)

DOCKING BAY TO BE FITTED 1200 APART (MAX.)

MARGIN BAY TO BE FITTED AT EVERY FRAME



DATE	REMARKS	BY	CHKD
1974.10.24	SUBMITTED TO OWNERS FOR APPROVAL	K-20	
1974.10.24	REVISED IN ACCORDANCE WITH US REQUIREMENTS AND JAPANESE RULES	K-20	
1974.10.24	SUBMITTED TO LRS FOR APPROVAL	K-20	
1974.10.24	ATTACHED TO TENDER SPEC.	K-2	

HITACHI S.N. 3902
 MITSUBISHI S.N. 144
 N. K. K. S.N. 768

MIDSHIP SECTION

(KEY PLAN)

REV. - 1

DIMENSIONS	140.00 x 19.40 x 12.20
SCALE	1:25 CLASS L.R.S.
HULL DESIGNING SECTION	SHIP DESIGNING DEPARTMENT
MANAGER	T. KAWANO
CHIEF	T. KAWANO
HEAD	T. KAWANO
CHECKED	T. KAWANO
DRAWN	T. KAWANO
DATE	1974.10.24
REGD.	REGD.
DESIGNING SECTION	DESIGNING SECTION
NO.	144
NO.	5860-B
NO.	5860-B
NO.	5860-B

M H. THOMAS

CERTIFIED COPY OF APPROVED PLAN	
PLACE OF APPROVAL	KOBÉ
DATE	30 th Mar. 1960
CERTIFIED BY	A M. Chean
DATE	19 th Dec 1960

MIDSHIP SECTION HITACHI 3902.

RECORDS DEPT.
LONDON.

(3)



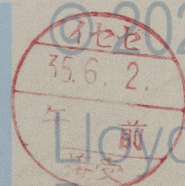
© 2021

Lloyd's Register
Foundation

012948-012953-0153



© 2021



Lloyd's Register
Foundation

0158