

[illegible]

MAIN ENGINE
B. & W. ALPHA MARINE
DIESEL ENGINE TYPE 343 F
150 B.H.P. 450 R.P.M.

THIS IS

ENGINE GIRDER
3/8" Φ . WITH 8" \times 3/4" TOP BAR

2 - STOCKLESS BOWER ANCHORS 4 $\frac{3}{8}$ CWT. EACH ✓
1 - STREAM ANCHORS $\frac{3}{4}$ CWT. EX-STOCK ✓
60 FATHOMS STUD LINK CABLE $\frac{1}{16}$ " DIA. ✓
30 " 2" CIR. $\frac{5}{12}$ F.S.W.R. FOR STREAM ANCH ✓
30 " 2" CIR. $\frac{9}{12}$ F.S.W.R. FOR TOW LINE ✓
2x30 " 3" CIR. 4 STRAND FIBRE HAWSER ✓

- 1 - STOCKLESS BOWEN ANCHOR 2 1/4 CWT.
- 45 FATHOMS 1/16" DIA. STUD LINK CABLE.
- 15 " 4 1/4" 4 STRAND FIBRE HAWSER

Any openings not shown on this approved plan which may be cut in rule decks or rib plating are to be properly framed and adequate compensation provided to the surveyor's satisfaction. The loss of sectional area of longitudinal material is to be restored by doublings or increased thickness of plating in way of and around such openings. Adequate compensation is also to be fitted for the cutting of other strength members in the structure as may be necessary.

2 - STOCKLESS BOWER	ANCHORS 4 3/8 CWT. EACH
60 FATHOMS STUD LINK	CABLE 1 1/2" DIA
30 " 2" CIRC. 9/12	F.S.W.R. FOR TOW LINE
2x30 " 3" CIRC. 4 S	STRAND FIBRE HAWSER.

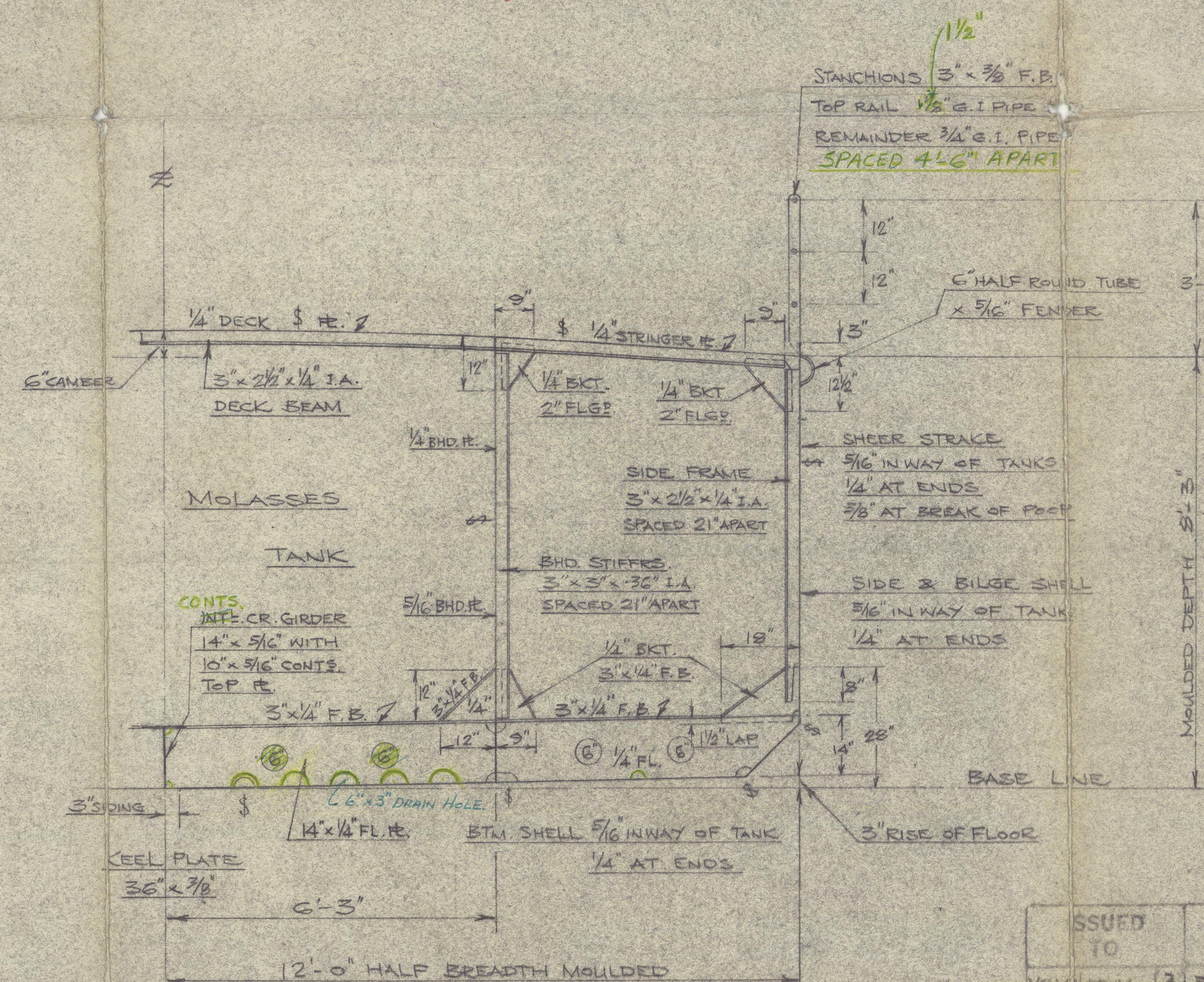
also Molasses
See Secretary's
letter 2/10/58

RSP
F." 6/2/58

"CARRYING OIL IN BULK HAVING A F.P. ABOVE 150° F."
 "FOR SERVICE IN RANGOON HARBOUR."
 "ELECTRICALLY WELDED."

Welding to Rule requirements and
to Surveyors Satisfaction.


Test Head - 2 feet above top of tanks.

[illegible]

SCALE -	1/2" = 1'-0"	DRG. NO. P. 714/2
DRAWN BY	W. FINE	REMARKS: -
TRACED		
CHECKED		
DATE	29-7-58	

PACIFIC ISLANDS
SHIPBUILDING CO., LTD.
19 AUG 1958
DRAWING OFFICE
HONG KONG

012948-012953-0115 Lloyd's Register Foundation

M.S. "FIONETTA" 

PACIFIC ISLANDS S.B. Co. LTD.

YARD No. 237.

HONG KONG REPORT No. 14664

MIDSHIP SECTION

RECORDS DEPT.
LONDON.

2



© 2021

Lloyd's Register
Foundation

012948-012953-0116