

# LLOYD'S REGISTER OF SHIPPING

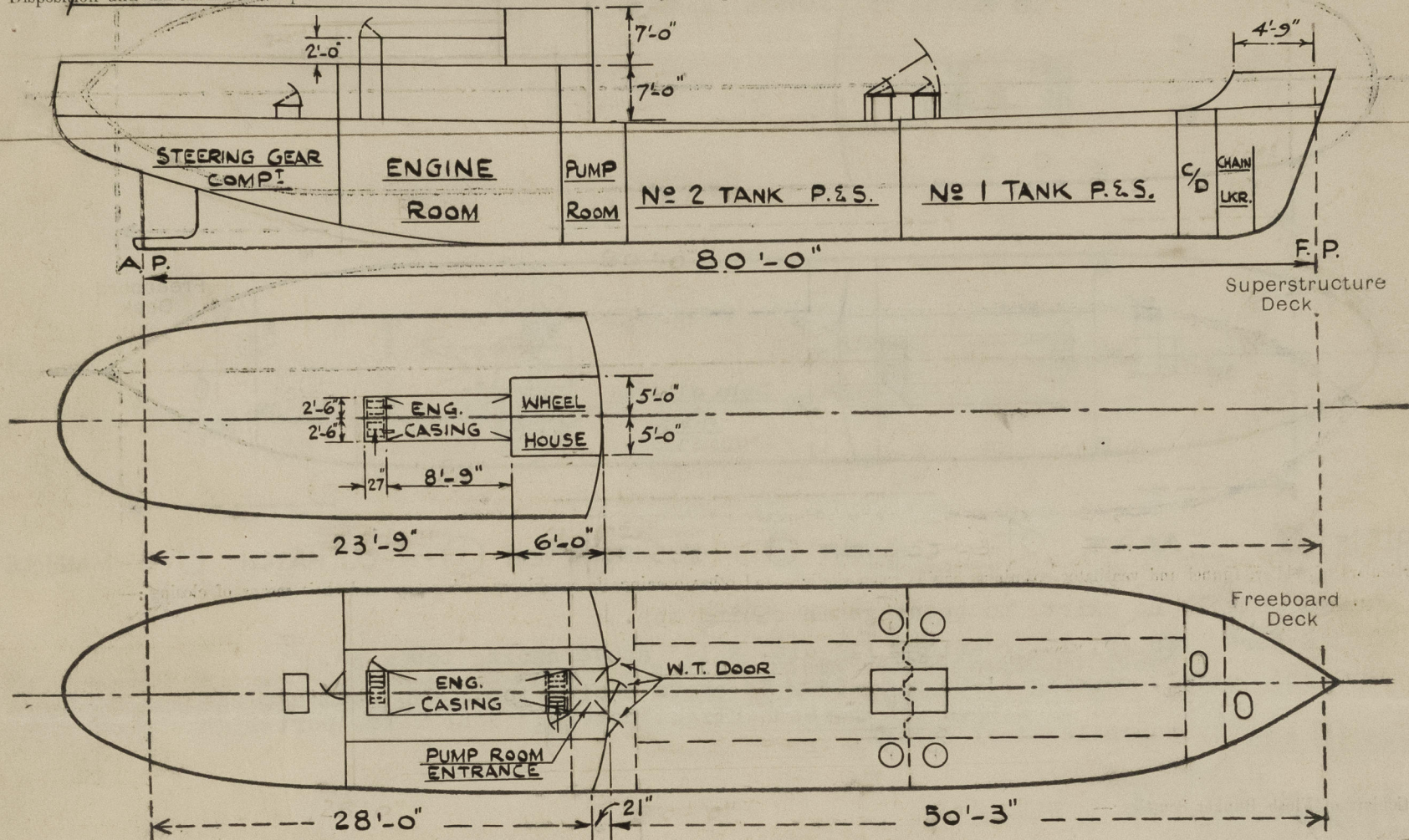
UNITED WITH THE BRITISH CORPORATION REGISTER

Index No. \_\_\_\_\_  
(For London Office only.)

## SURVEYS FOR FREEBOARD. (CONDITIONS OF ASSIGNMENT.)

Ship's Name "FIONETTA" Port of Survey HONG KONG.  
 Official Number \_\_\_\_\_ Surveyor's Signature James A. Anderson.  
 Nationality and Port of Registry Panamanian - Panama. Date of Survey 28th November, 1958.

Disposition and dimensions of superstructures, trunks, deckhouses, machinery casings and wood sheathing to be inserted in the diagrams and tabular statement:—



Particulars of Superstructures, Trunks, Casings, Deckhouses.

	Coaming	Plating	Stiffeners	Spacing	End Attachments of Stiffeners	Size of Openings	Height of Sills	Height, Beam to Beam
Poop Bulkhead ...		.30	.25	3½"x3"x.30"I.A.	30" max.	Welded top & bottom	4'-3"x2'-0"	24" ✓ 7'-0"
Raised Quarter Deck Bulkhead ...								
Bridge, After Bulkhead ...								
Bridge, Forward Bulkhead ...								
Forecastle Bulkhead ...								
Trunk, Aft ...								
Trunk, Forward ...								
Exposed Machinery Casings on Freeboard or Raised Quarter Decks ...								
Exposed Machinery Casings on Superstructure Decks ...		.25	2½"x¼" Flat Bars	21" ✓	Welded top, Continuous bot.	On Casing Top 4'-6"x 21"	27" ✓	24" above wood deck ✓
Machinery Casings within Superstructures not fitted with Class I Closing Appliances ...		.25	2½"x¼" Flat Bars	21" ✓	Continuous top & bot.	4'-11"x24"	12" ✓	7'-0" ✓
Deckhouses and Pump Room Entrances		As for Poop Bulkhead. ✓						

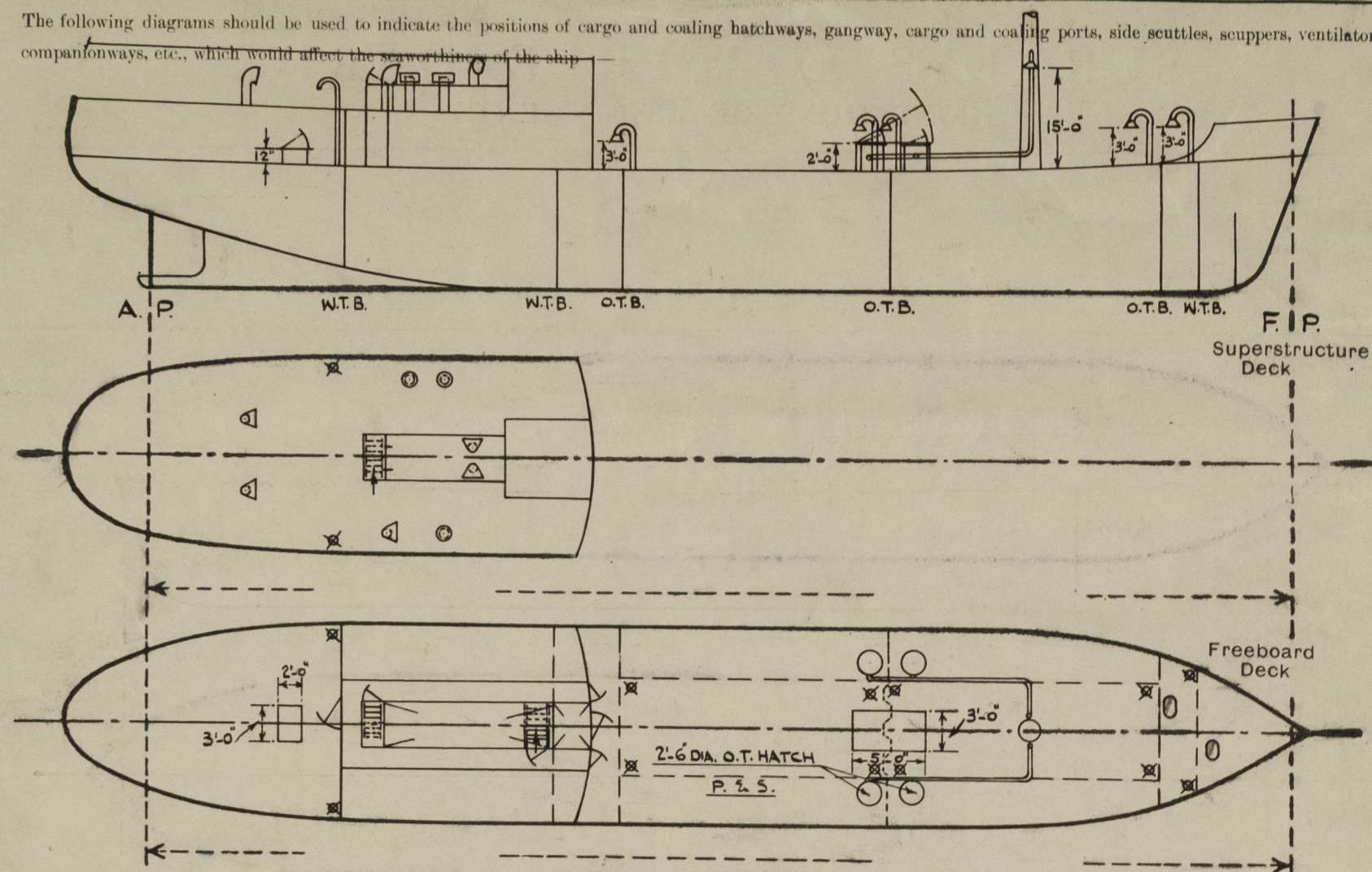
Particulars of Closing Appliances (state if capable of being manipulated from both sides).

Poop Bulkhead ...	Hinged steel watertight doors capable of being operated from both sides. ✓
Raised Quarter Deck Bulkhead ...	
Bridge, After Bulkhead ...	
Bridge, Forward Bulkhead ...	
Forecastle Bulkhead ...	
Exposed Machinery Casings on Freeboard or Raised Quarter Decks ...	
Exposed Machinery Casings on Superstructure Decks ...	Hinged steel watertight cover capable of being operated from both sides. ✓
Machinery Casings within Superstructures not fitted with Class I Closing Appliances ...	Hinged steel weathertight door capable of being operated from both sides. ✓
Deckhouses and Pump Room Entrances	As for Poop Bulkhead. ✓



# PARTICULARS OF PROTECTION TO OPENINGS, ETC.

The following diagrams should be used to indicate the positions of cargo and coaling hatchways, gangway, cargo and coaling ports, side scuttles, scuppers, ventilators, companionways, etc., which would affect the seaworthiness of the ship.



NOTE: - AIR PIPE COWL VENT MUSHROOM VENT O.T. HATCH MANHOLE

Particulars of fiddle, funnel and ventilator coamings, engine room skylight and other openings in machinery casing tops and their means of closing:—

Funnel steel, no skirt, no openings in casing top.

Ventilators two 1p. 1s. coamings 12" dia. x 14" above casing top x  $\frac{3}{8}$ ".

Skylight steel, coaming 3'-0" x 4'-0" x 9" above casing top. Two openings 2'-5" x 1'-6" protected by hinged steel weathertight covers. Four fixed port lights protected by portable steel covers.

Particulars of Flush Bunker Scuttles:— Nil.

Particulars of Companionways:—

(including those incorporated in deckhouses and masthouses) See under exposed casings on superstructure deck.

Particulars of Ventilators in exposed positions on freeboard and superstructure decks:—

Poop Deck Three 1p. 2s. coamings 6" dia. x 2'-6" above wood deck x  $\frac{5}{16}$ " fitted with wood plugs and canvas covers.

Three 2p. 1s. mushroom type coamings 5" dia. x 2'-6" above wood deck and fitted with steel watertight covers.

Two 1p. 1s. gooseneck type 2" dia., opg. 3'-0" above steel deck & fitted with wood plugs and canvas covers.

Particulars of Air Pipes in exposed positions on freeboard, raised quarter, or superstructure decks:—

Upper Deck To Fore Peak & Cofferdam Three 2½" dia. opg. 3'-0" above deck.

To Cargo Tanks Eight 5" dia. opg. 3'-0" above deck.

Poop Deck To Fuel & F.W. Tanks Four 2p. 2s. 2" dia. ogs. 3'-0" above steel deck.

Air pipes to water tanks fitted with wood plugs and canvas covers.

Air pipes to oil tanks fitted with gauze wire and canvas covers.

Particulars of Gangway, Cargo and Coaling Ports:— Nil.

Particulars of Scuppers and Sanitary Discharge Pipes:—

Upper Deck Scuppers Two 1p. 1s. 2½" dia. through deck and shell.

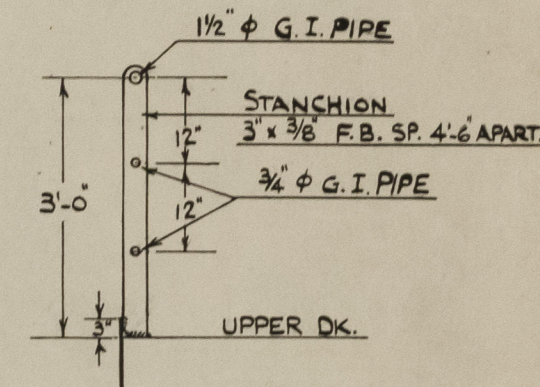
Poop Scuppers Two 1p. 1s. 2" dia., fitted in bulkhead. Screwed brass plugs, permanently attached to bulkhead, installed.

Sanitary Discharges Two 1p. 1s. 4" dia. One p. 2½" dia. fitted with automatic non-return valves (cast steel chests) at shell.

Particulars of Side Scuttles & Deadlights:—

Poop Front & Sides Fourteen 6p. 8s. 10" dia. and fitted with deadlights. All to B.S.S. requirements.

Vertical distance of Sill of lowest Side Scuttle above top of keel. No scuttle ports below freeboard deck.  
Distance from amidships to centre of lowest Side Scuttle.



Particulars of Guard Rails & Bulwarks:—

Upper Deck Three tier guard rails 3'-0" high.

Stanchions 3" x  $\frac{3}{8}$ " flat bars spaced 4'-6".

Poop Deck Three tier guard rails 3'-0" high.

Stanchions 3" x  $\frac{3}{8}$ " flat bars spaced 4'-0".

Particulars of Gangways, Lifelines, etc.:—

Adequate materials and facilities on board.

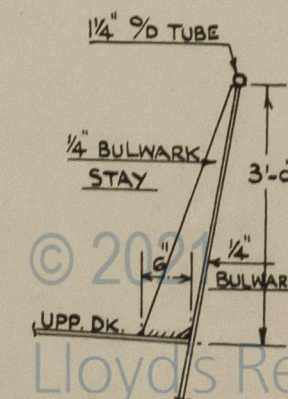
## Particulars of Freeing Arrangements.

	Length of Bulwark	Height of Bulwark	Size of Freeing Ports	Number each side	Area each side	Rule area each side
After Well ...			open rails.			
Forward Well ...						

State position of each freeing port ... { After Well:—  
(F. and A. position and height above deck edge) { Forward Well:—

State whether the freeing ports are fitted with shutters, bars, or rails, and give particulars of such:—

Additional area where sheer is less than standard.





# PARTICULARS OF PROTECTION TO OPENINGS, ETC.

## HATCHWAYS ON FREEBOARD AND SUPERSTRUCTURE DECKS.

Description of Hatchway	Cargo	Cargo	Access Aft.	Manholes						
Dimensions of Hatchway	30' dia.	5'-0" x 3'-0"	3'-0" x 2'-0"	1'-9" x 1'-3"						
COAMINGS	Height above Deck ... 24" ✓ Thickness { Sides ... .40" ✓ Ends ... Stiffeners ... Brackets, Stays { Sides ... Ends ...	24" ✓ .40" ✓ - - -	24" ✓ .40" ✓ - - -	12" ✓ 8" ✓ - - -	- - - - -					
HATCH BEAMS	Number ... Spacing ... Scantling and Sketch ...  Bearing Surface ...									
FORE AND AFTERS	Number ... Spacing ... Unsupported Lengths ... Scantling* and Sketch ...  Bearing Surface ...									
HATCH COVERS	Material ... Thickness ... How fitted ... Bearing Surface ...	Steel 1/2" Hinged On Tight .40"	Steel 1/2" Hinged On Tight .40"	Steel 1/2" Hinged W.T. 3/8"	Steel 5/16" Water Tight 2 1/2"					
Spacing of Cleats	6 x 7/8"	14 x 7/8"	6 x 7/8"	24 x 5/8"						
Number of Tarpaulins...	eye bolts & toggles	eye bolts & toggles	eye bolts & toggles	studs & nuts.						
<p>*Are wood fore and afters steel shod at all bearing surfaces?            Are battens and wedges efficient and in good condition?            Are tarpaulins in good condition and in accordance with rule requirements?            Are lashings provided in accordance with rule requirements?            Are wood covers fitted with galvanised end bands?</p>										
<p>Manhole covers marked not to be opened at sea.</p>										

Particulars of any special features:— (Timber Deck-cargo Fittings, Skylights, Sewage Systems, Ash Ejectors, Rubbish Shoots, etc.)



© 2021

Lloyd's Register  
Foundation