

CARGO BOAT (SINGLE SCREW)

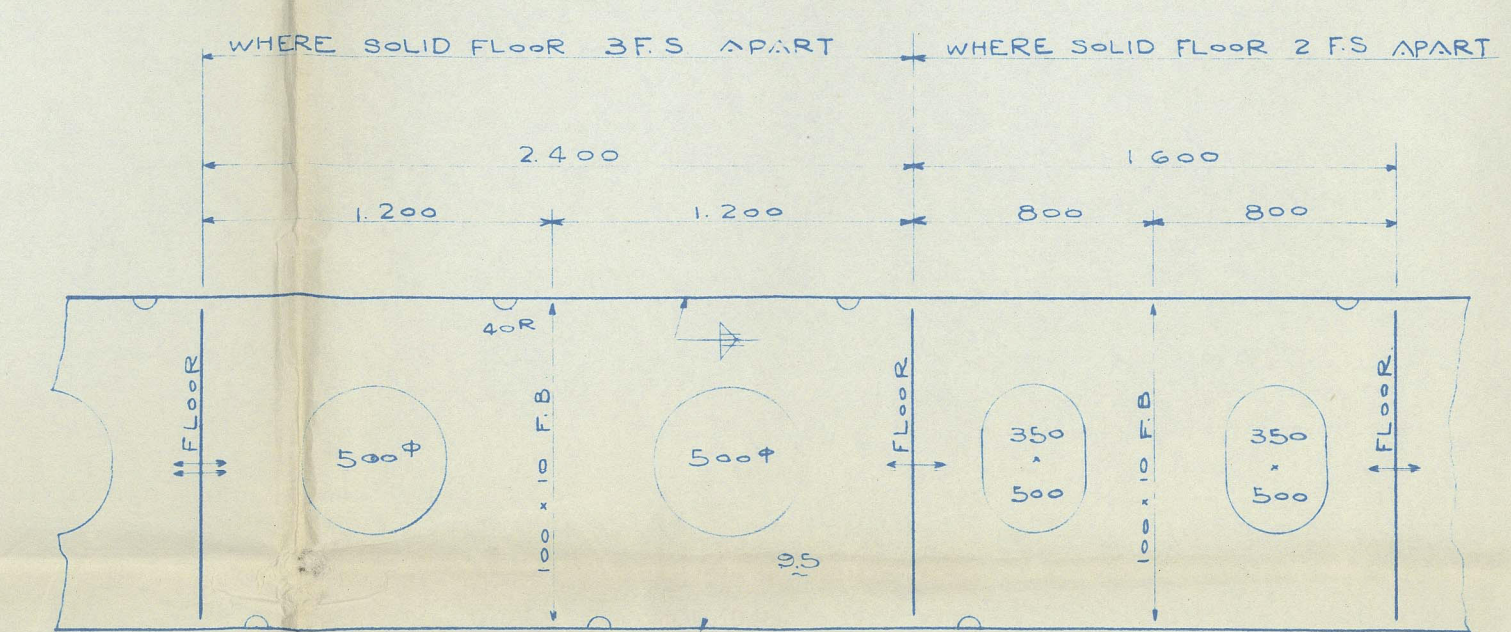
L.R. CLASS +100A 1
N.K. CLASS N.S. *

PRINCIPAL	DIMENSIONS	EQUIPMENT	NUMBER (L.R.)	EQUIPMENT	NUMBER (N.K.)
LENGTH	P.P. 140.00 (459.32)	FILE	140. (194.50) . 85. (122.50) 435.8	3 - BOWLER ANCHORS	12' 4.0
BREADTH	MID 12.60 (40.03)	ERECTOR	UPPER HOUSE 75. 26.00 . 252	CHAIN CABLE	550" . 58" 3/4
DEPTH	MID 8.75 (28.70)	BRI. OF	75. 25.00 . 200	LOW LINE STEEL WIRE	(6 . 24) 240" . 4.4" 3/4
DRAFT	8.75 (28.70)	BOAT DE	75. 25.00 . 275	2 - HAWSERS	200" . 70" 3/4
DESIGNED DRAFT FOR SCANTLING	9.00 (29.53)	NAV. BRI	75. 25.00 . 235	2 - WARPS	200" . 65" 3/4
FRAME SPACE					
BOTH BREAKS	81.2				
2L FROM FORE END - COLL. B.P.	80.5				
ELSEWHERE	80.0				
		METRIC UNIT	4544.2		
		ENGL. UNIT	488.020		

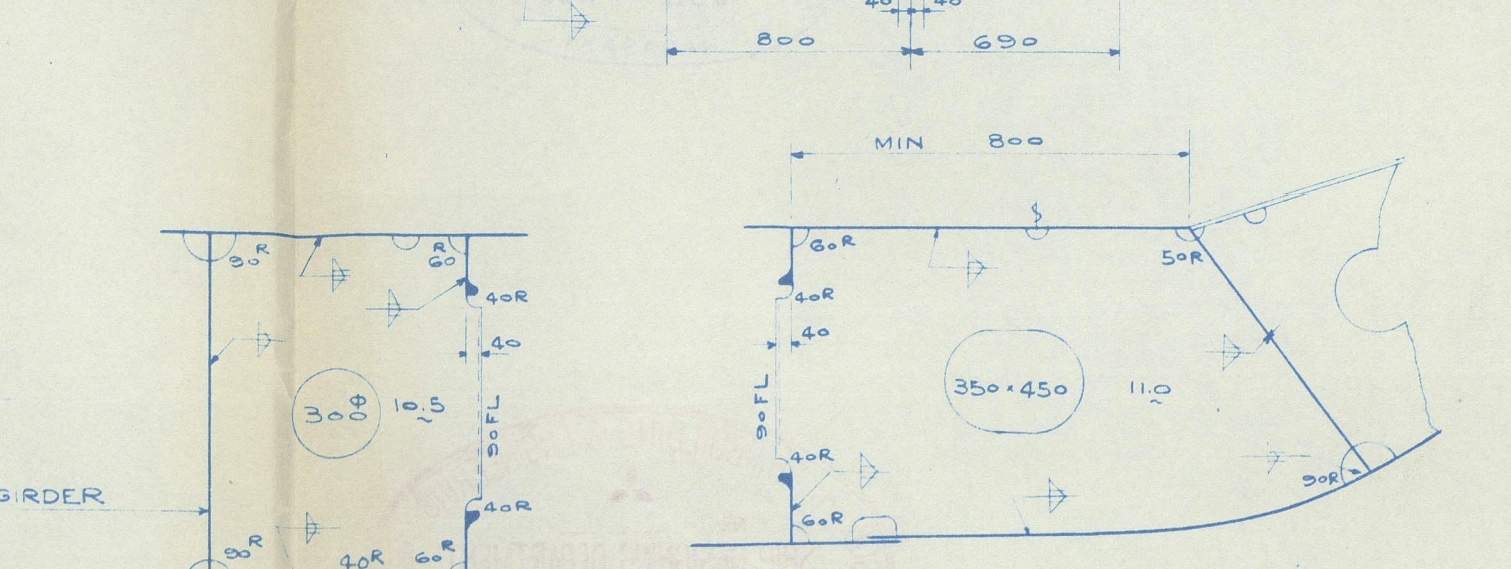
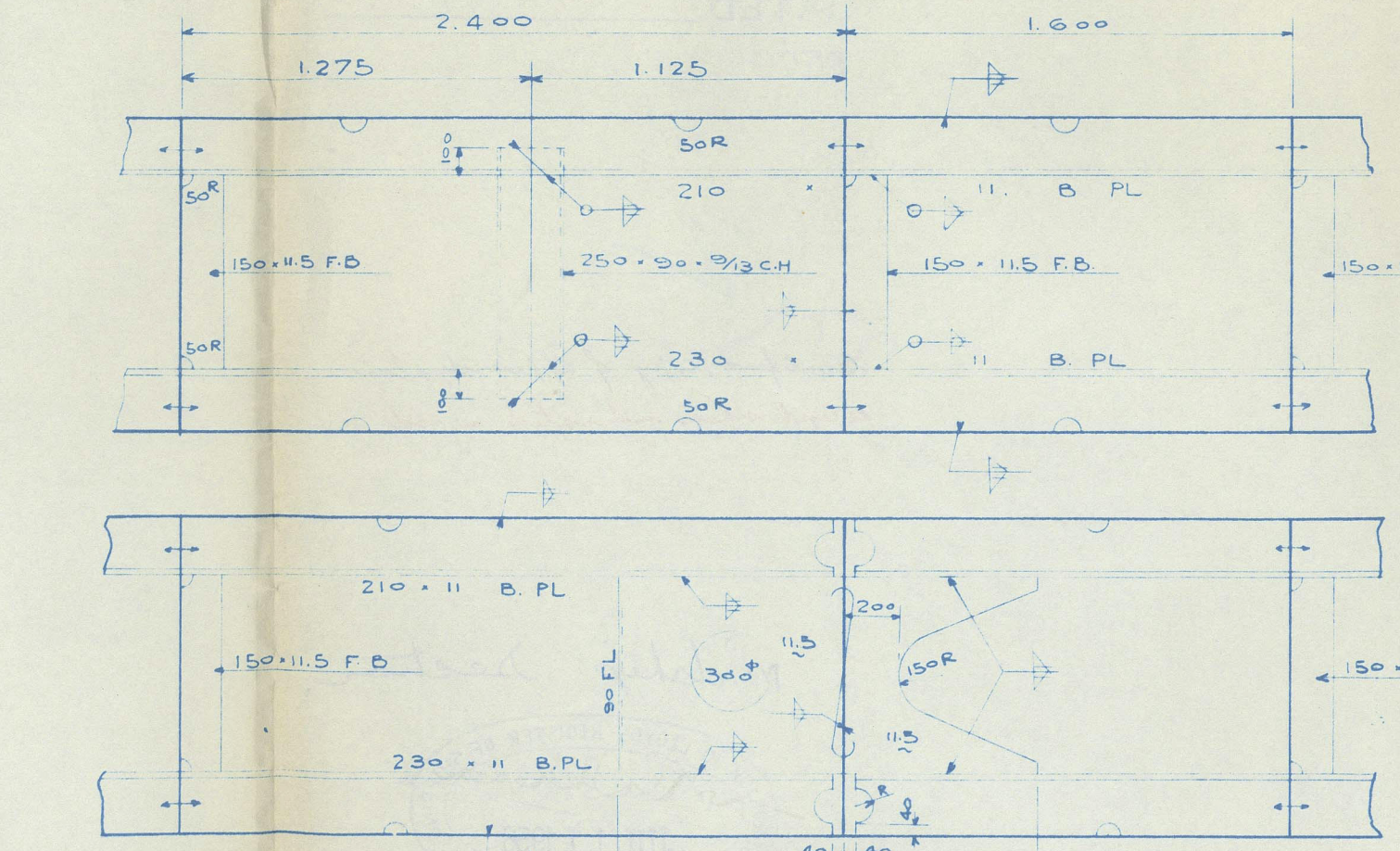
PRINCIPAL	DIMENSIONS	EQUIPMENT	NUMBER (L.R.)	EQUIPMENT	NUMBER (N.K.)
LENGTH	P.P. 140.00 (459.32)	FILE	140. (194.50) . 85. (122.50) 435.8	3 - BOWLER ANCHORS	12' 4.0
BREADTH	MID 12.60 (40.03)	ERECTOR	UPPER HOUSE 75. 26.00 . 252	CHAIN CABLE	550" . 58" 3/4
DEPTH	MID 8.75 (28.70)	BRI. OF	75. 25.00 . 200	LOW LINE STEEL WIRE	(6 . 24) 240" . 4.4" 3/4
DRAFT	8.75 (28.70)	BOAT DE	75. 25.00 . 275	2 - HAWSERS	200" . 70" 3/4
DESIGNED DRAFT FOR SCANTLING	9.00 (29.53)	NAV. BRI	75. 25.00 . 235	2 - WARPS	200" . 65" 3/4
FRAME SPACE					
BOTH BREAKS	81.2				
2L FROM FORE END - COLL. B.P.	80.5				
ELSEWHERE	80.0				
		METRIC UNIT	4544.2		
		ENGL. UNIT	488.020		

SHELL PLATE AT END OF DECK
FILE SIDE PLATE
BOTTOM SHELL FORWARD
STRENGTHENING NEXT THE KEEL PLATE BETWEEN
HOLD AND 2ND DECK FROM FORE END 185. RHE. THICK
SIDE PLATE WAY OF PAINTING REGION
FORE END - COLL. B.P. (NO SHELL PLATE P. STR.)
COLL. B.P. 15L FROM FORE END (NO SIDE STRINGER)
BUILT UP STEEL PLATE
BELOW L.W.L.
ABOVE L.W.L.

DETAILS OF SIDE GIRDER



DETAILS OF LONG. GIRDER



DOCKING B.T. TO BE FITTED 1200 APART (MAX)
B.T. TO MARGIN PL. TO BE FITTED AT EVERY FRAME

DAIDO KAIUN
KOSOH MARU

MIDSHIP SECTION
(FINISHED PLAN)

DIMENSION 1400 x 194 x 122
SCALE 1/25 CLASS S.R.

HULL DESIGNING SECTION
SHIP DESIGNING DEPARTMENT
NAGASAKI

CHIEF OFFICER
CHIEF
HEAD
CHECKED
DRAWN
DATE
MITSUBISHI ZOSEN KAWASAKI KAISHA
TOKYO JAPAN

SHIP NO. 1465
DSN NO. H-206

012923-012924-00038

LONDON

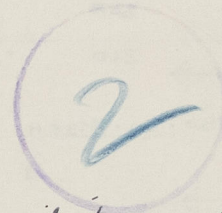
KOSOH MARU.

SHIMONOSEKI RPT. No. 570

DATED _____

RECORDS DEPT.

LONDON



Identified copy of approved plan
except where indicated in red.

MIDSHIP SECTION

(FINISHED PLAN)

DIMENSION $1400^M \times 194^M \times 122^M$ SCALE $1/25$

CLASS L.R.

HULL DESIGNING SECTION

SHIP DESIGNING DEPARTMENT
NAGASAKI WORKS

CHIEF OF DEPT.

CHIEF

HEAD

CHECKED

DRAWN

DATE

REG NO.

MITSUBISHI ZOSEN KABUSHIKI KAISHA
TOKYO JAPAN

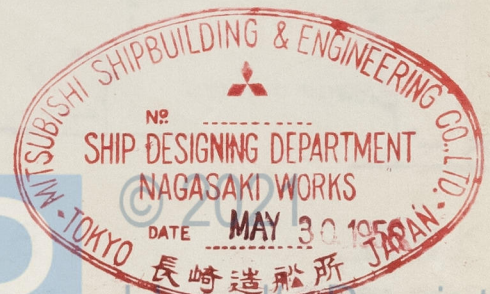
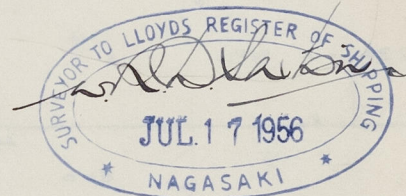
SHIP NO.

1 4 6 5

DSN NO.

H-206

midship section.



012933-012939-0038

012933-012939-0038