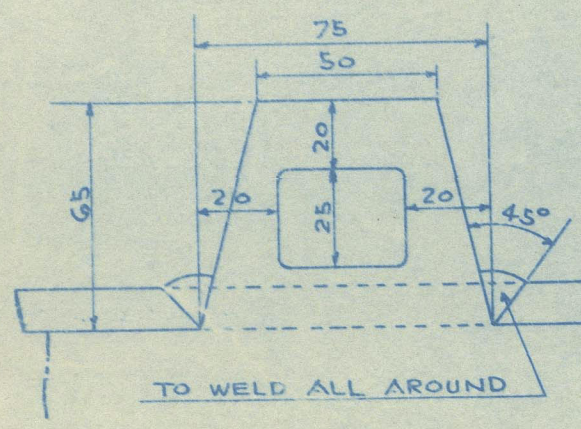
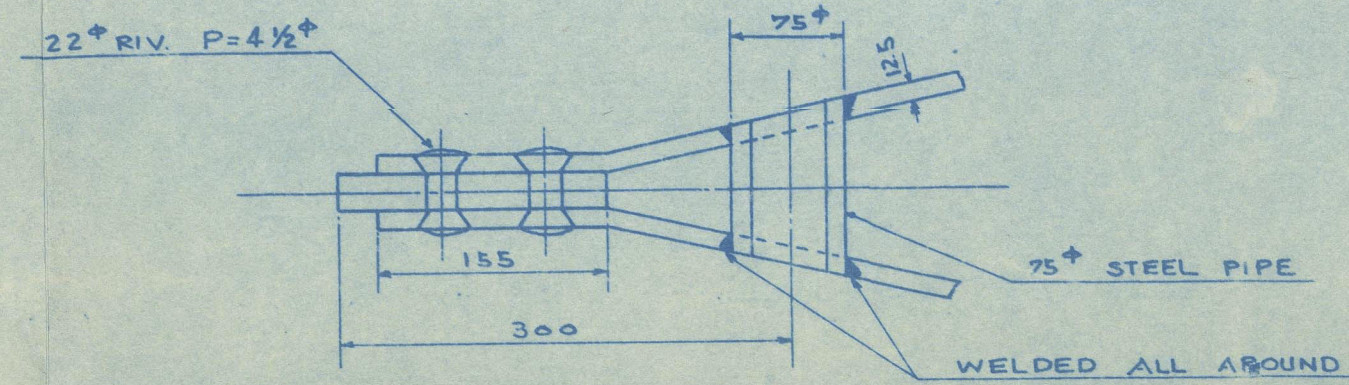


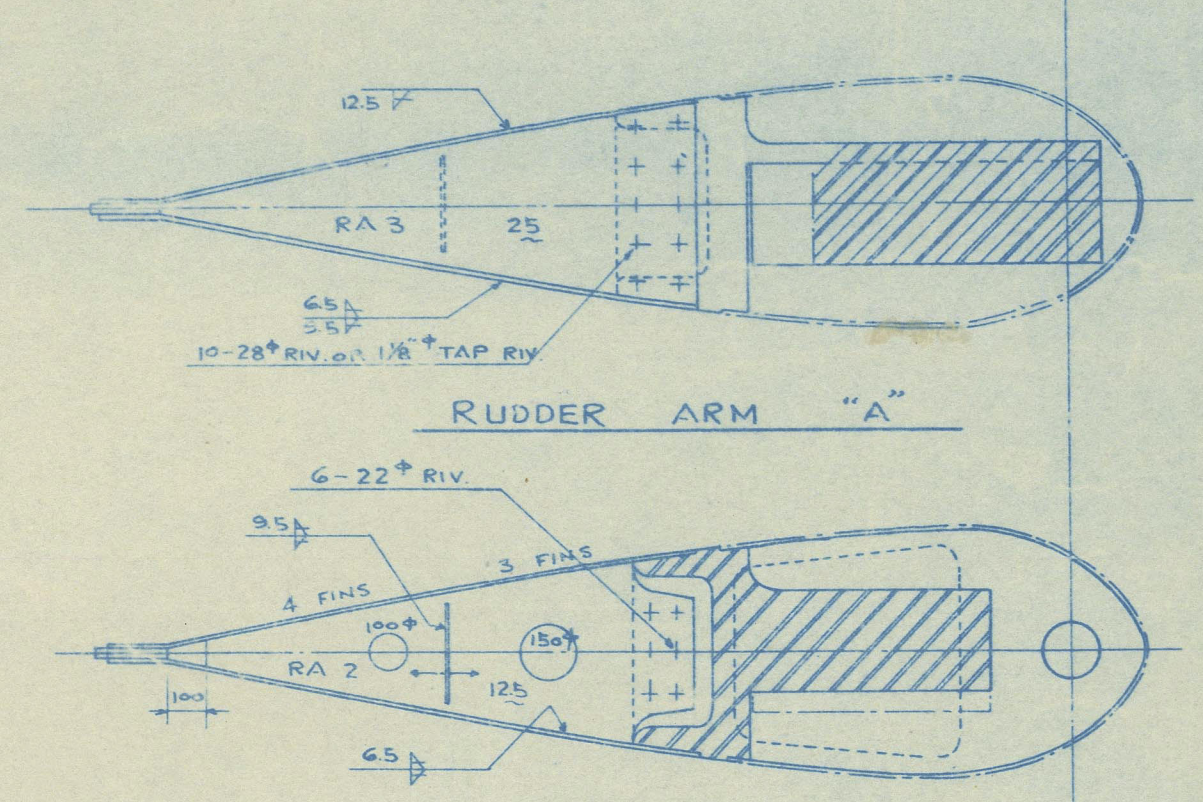
TYPICAL DETAIL OF FIN  
SCALE 1/2  
CUT OFF FIN AFTER  
FINISHING WELDING



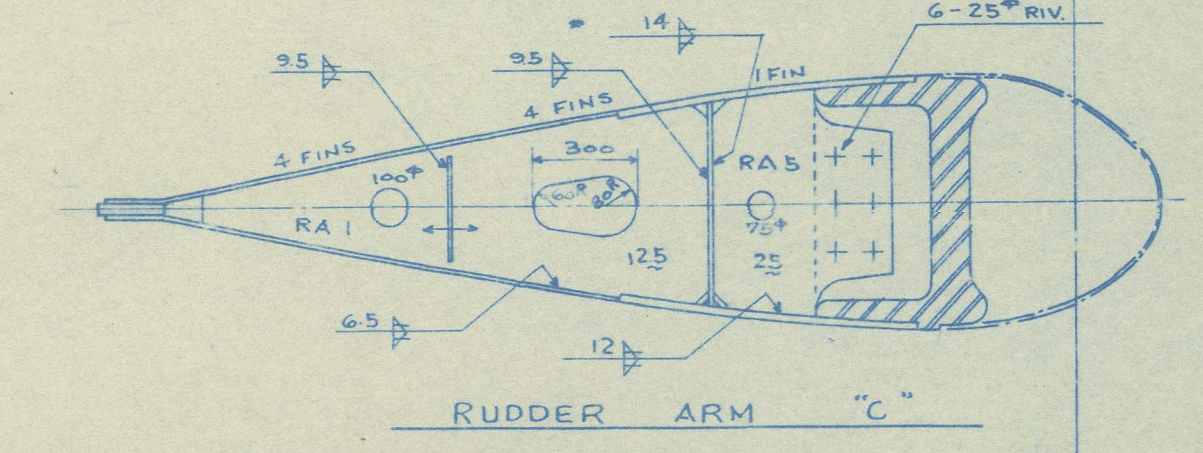
DETAIL OF LIFTING HOLE  
SCALE 1/2



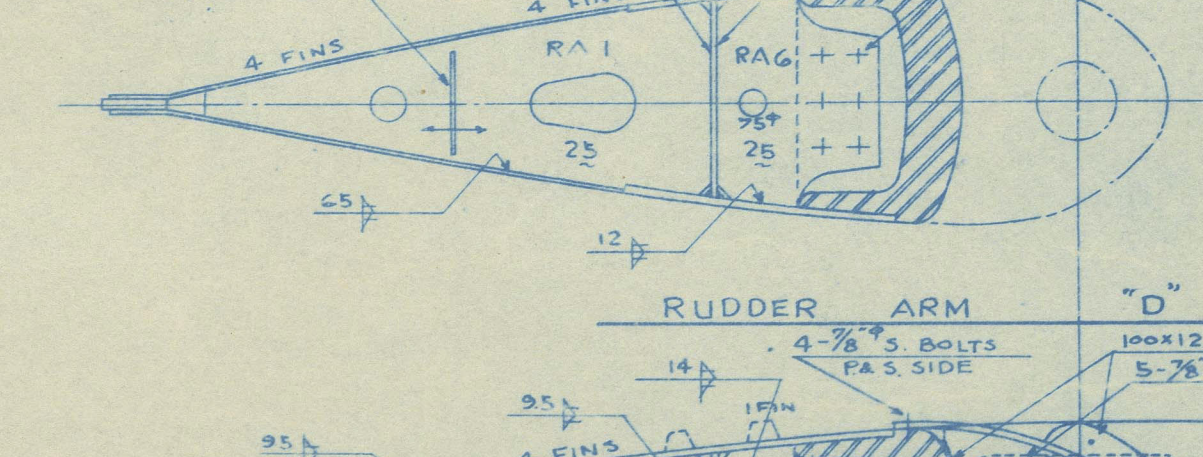
TOP PLAN



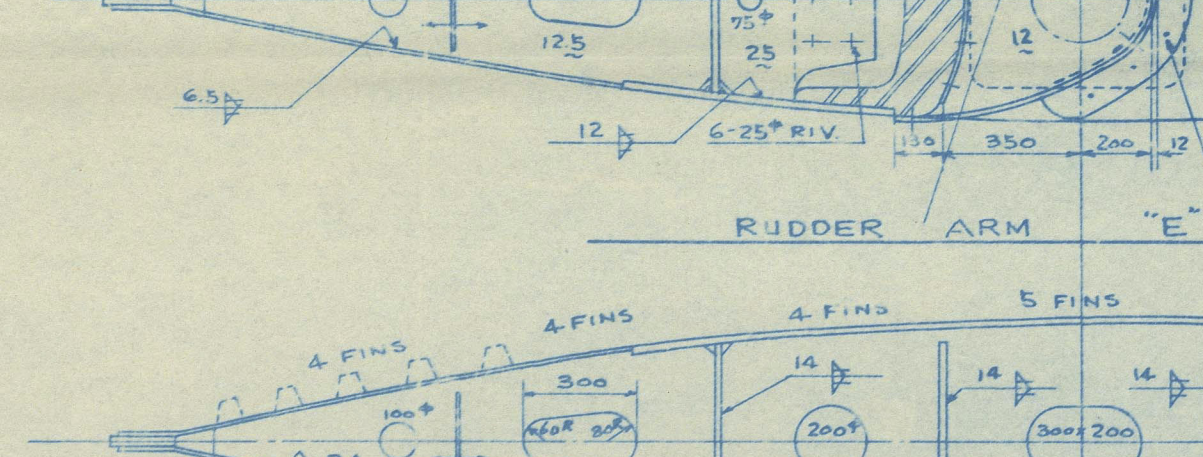
RUDDER ARM "A"



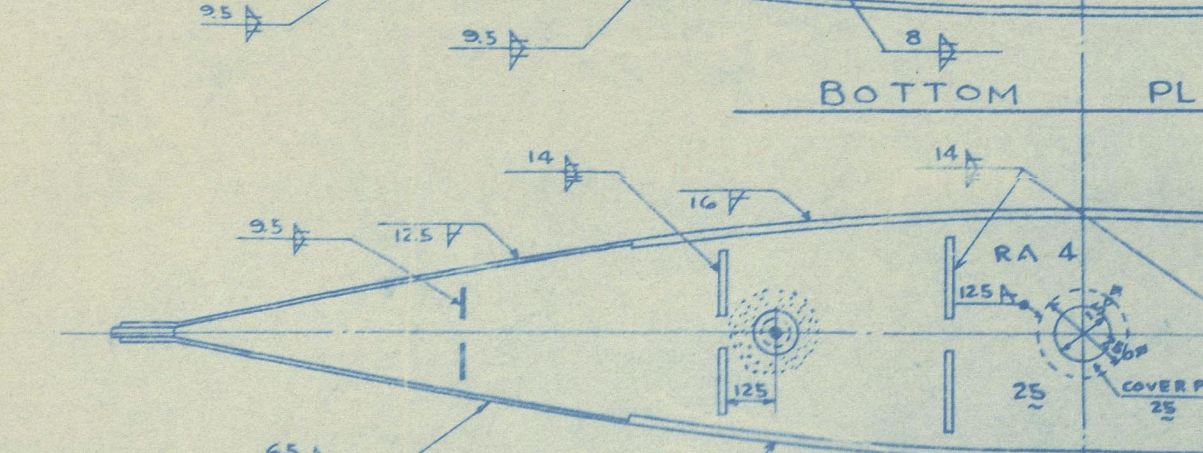
RUDDER ARM "B"



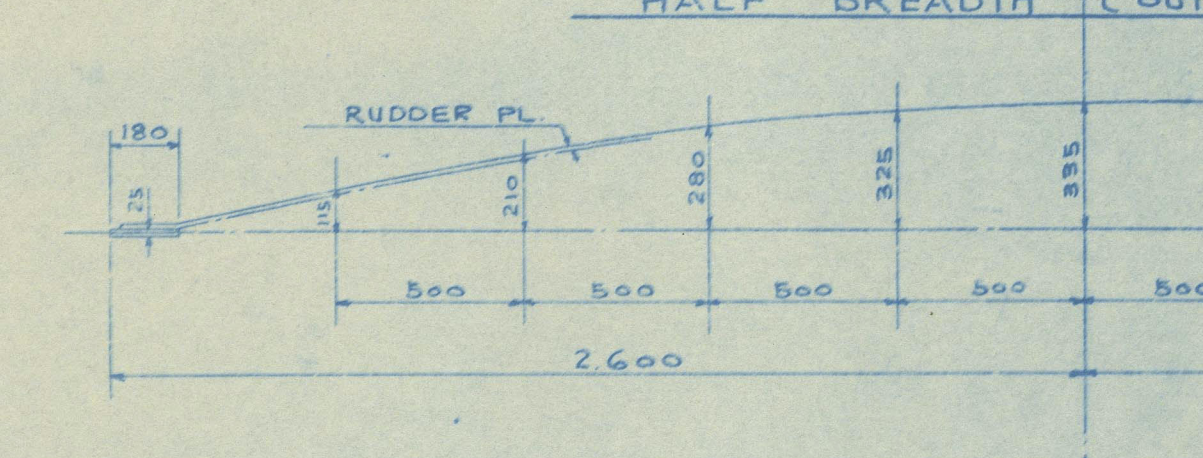
RUDDER ARM "C"



RUDDER ARM "D"



RUDDER ARM "E"



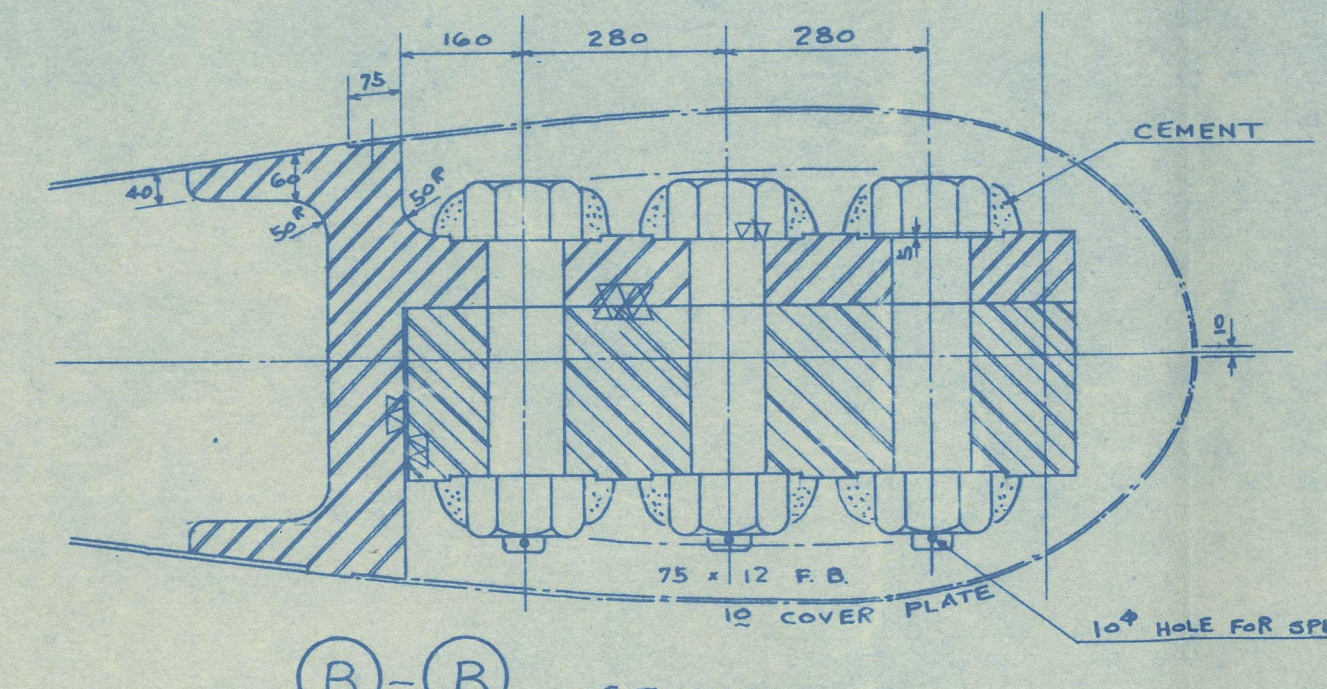
RUDDER ARM "F"



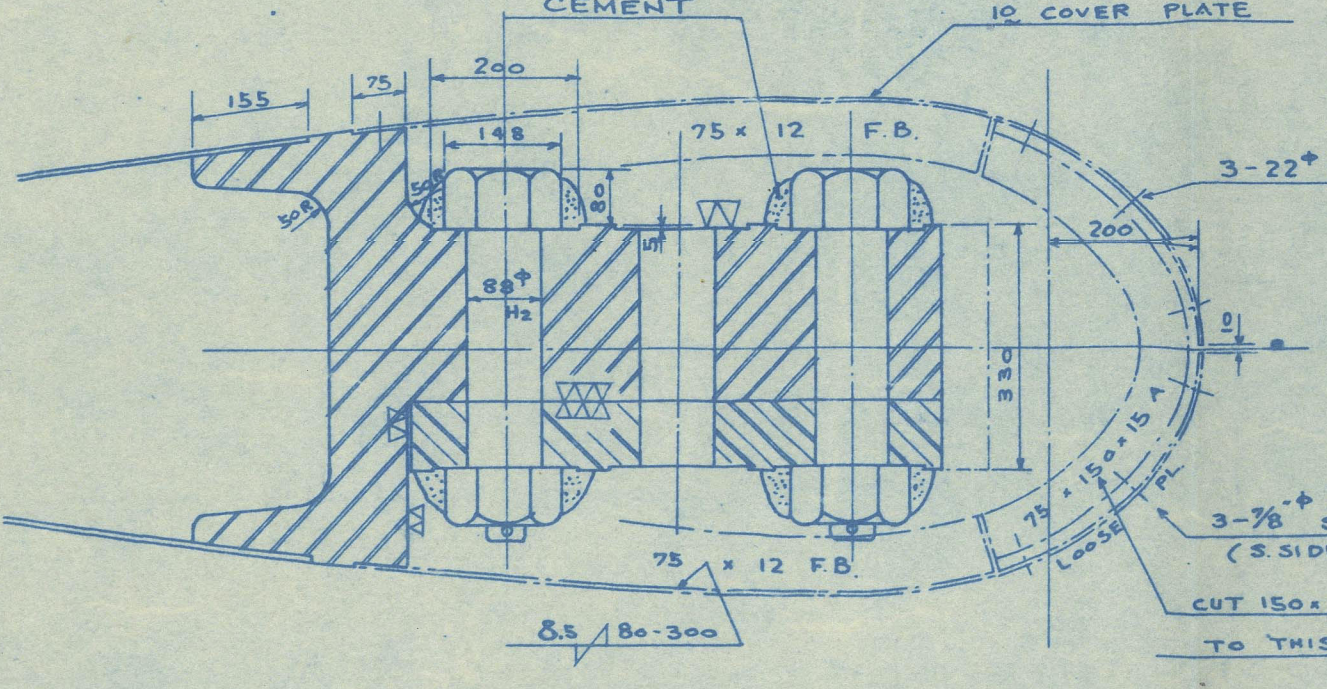
RUDDER ARM "G"



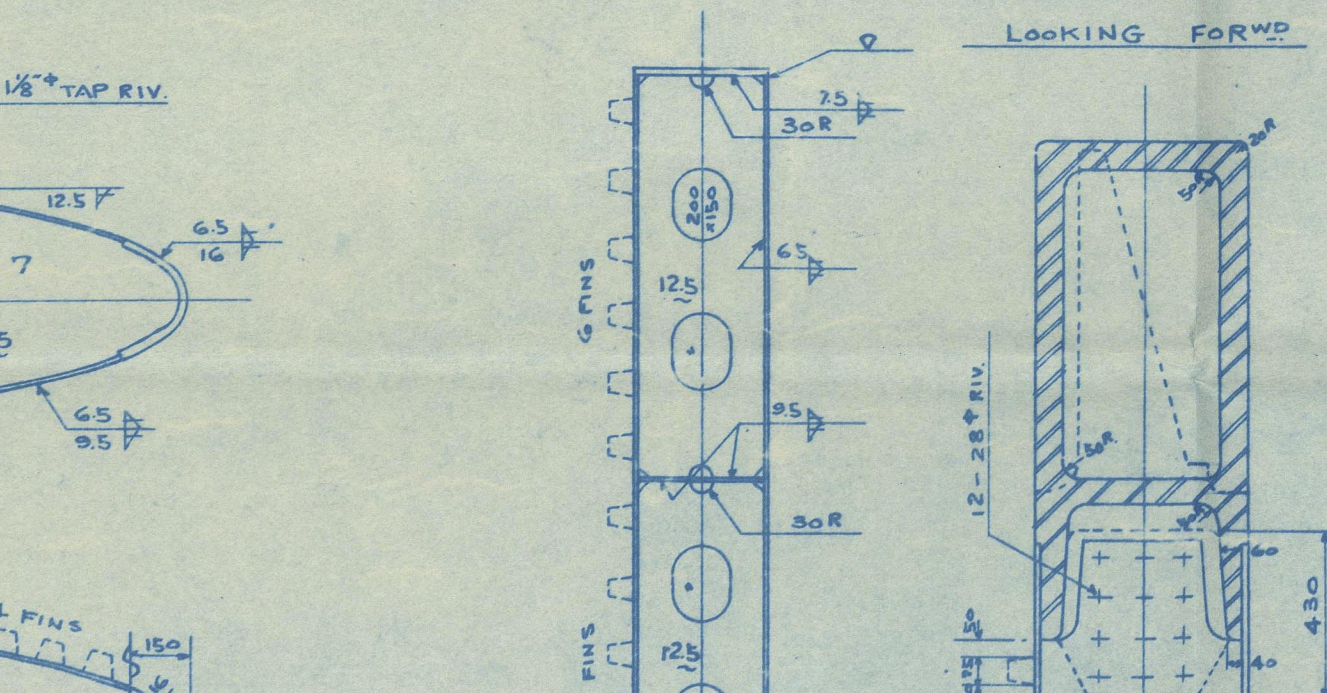
A-A SECTION



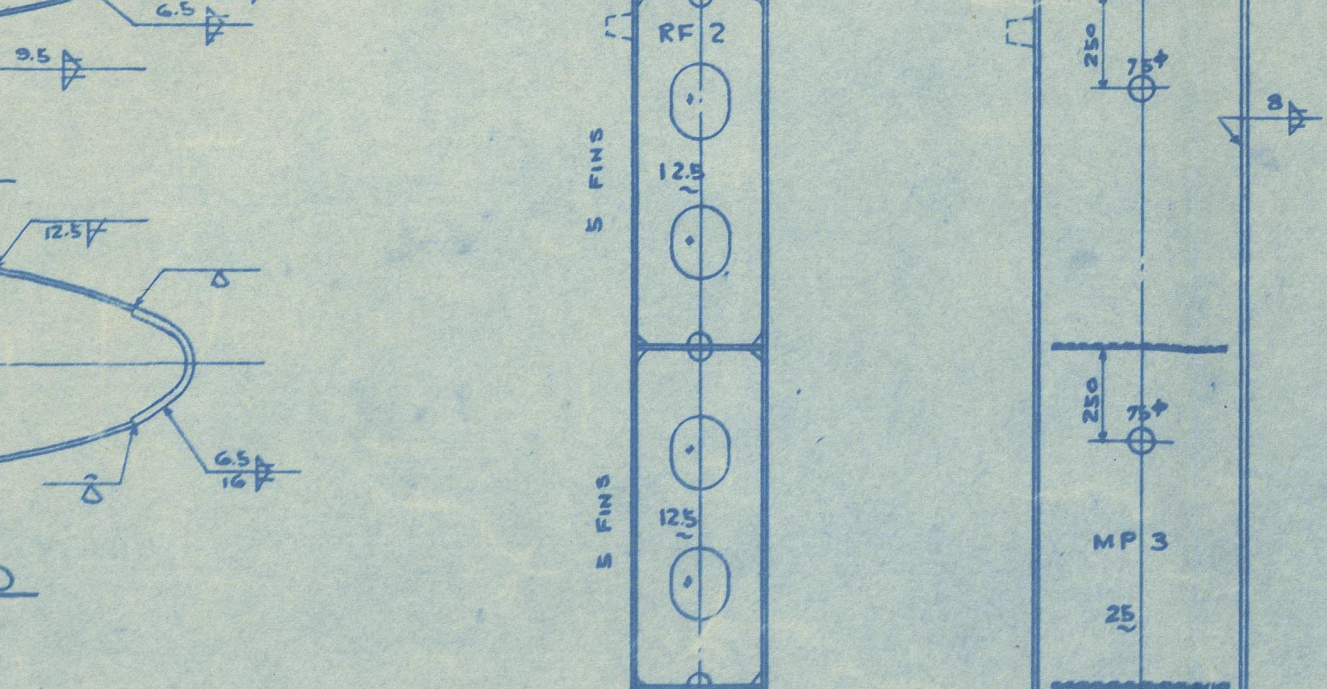
B-B SECTION



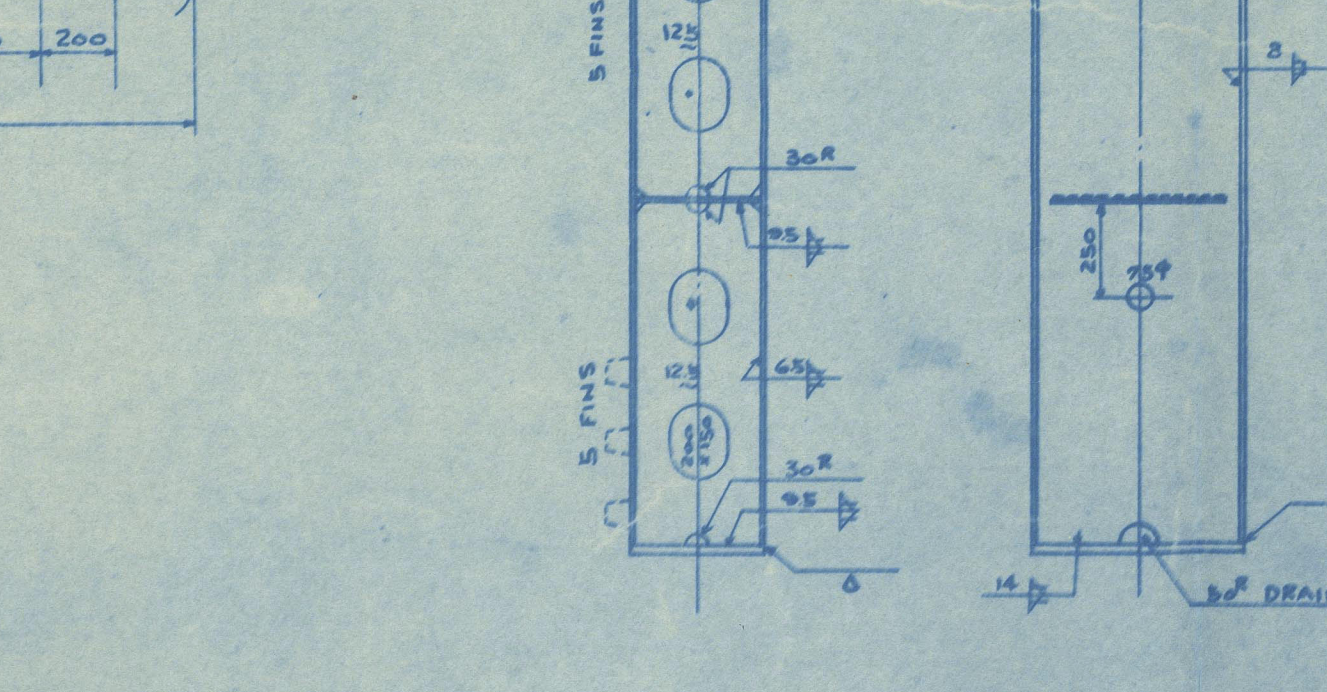
RUDDER FRAME "B"



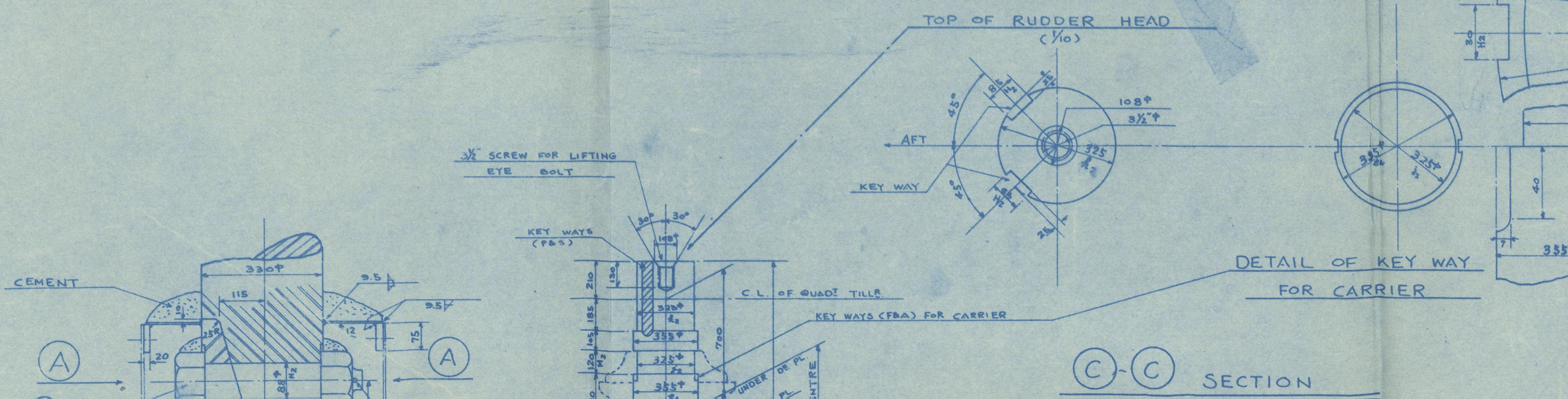
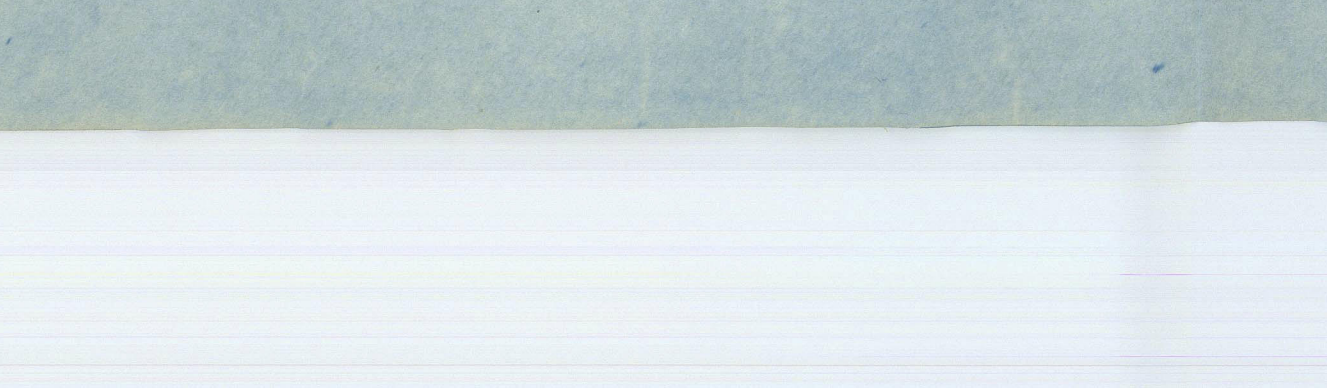
MAIN PIECE "C"



MAIN PIECE "D"

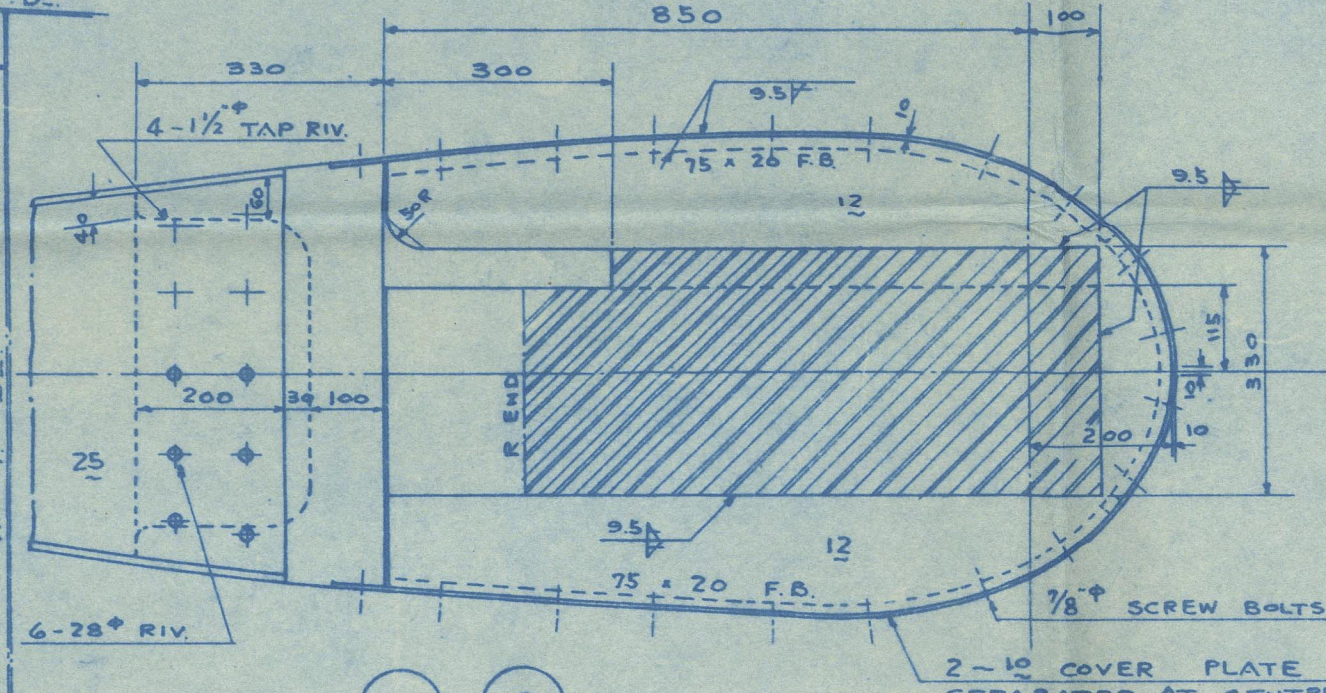


MAIN PIECE "E"

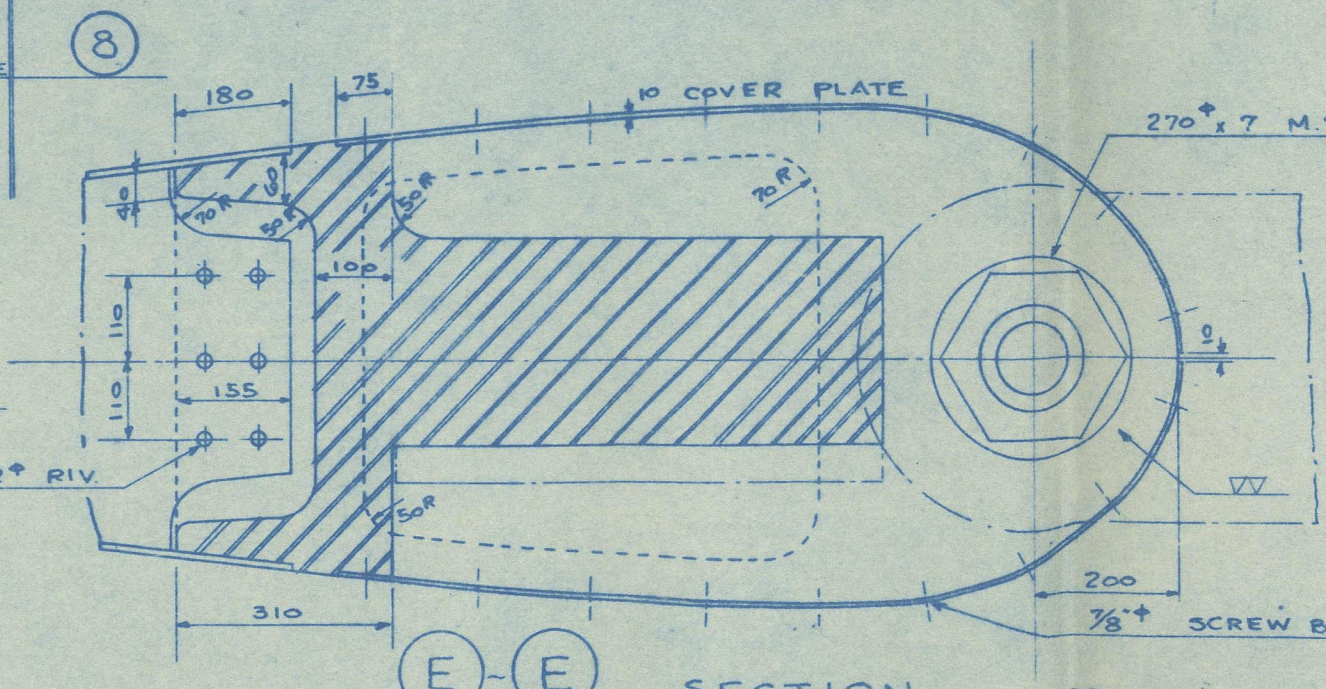


DETAIL OF KEY WAY  
FOR CARRIER

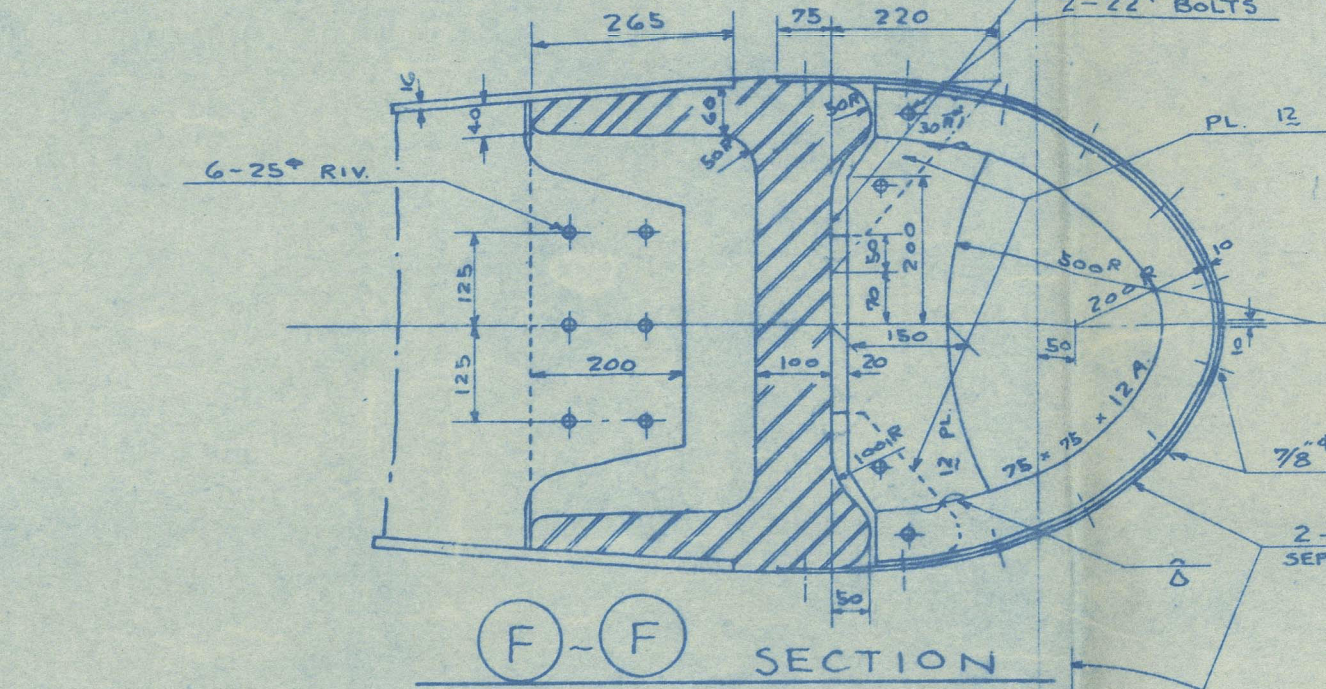
C-C SECTION



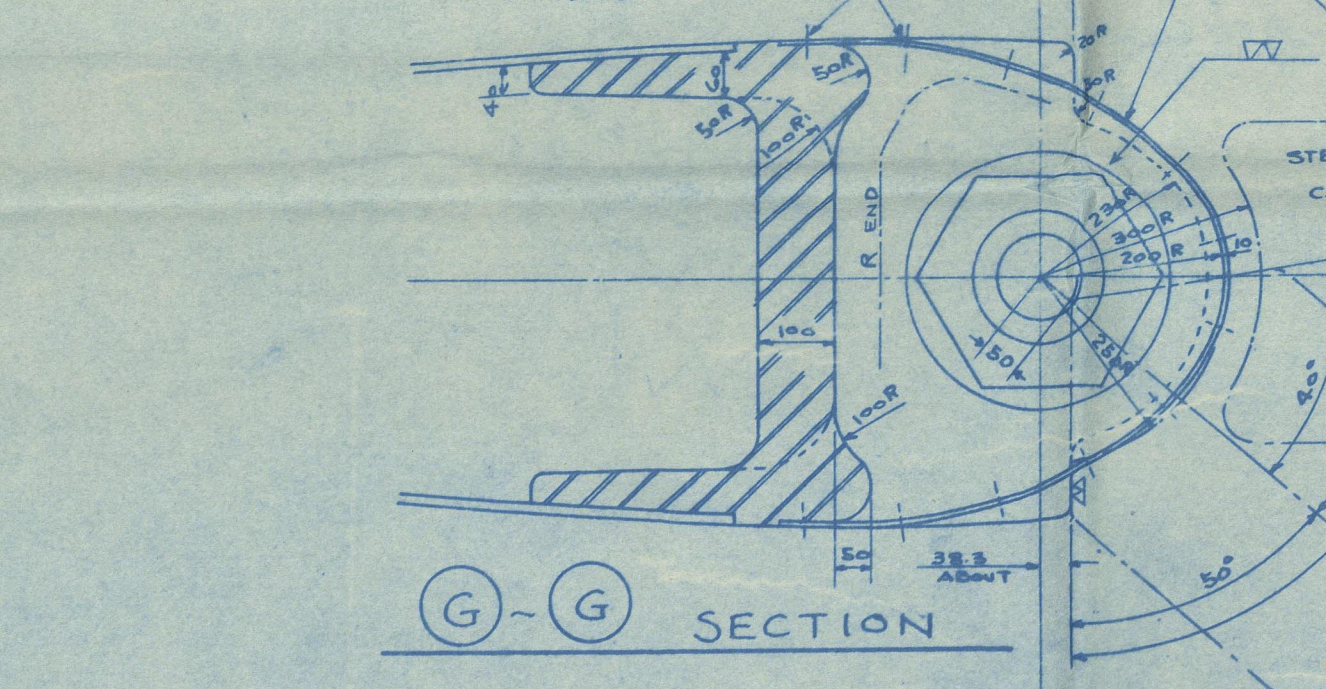
D-D SECTION



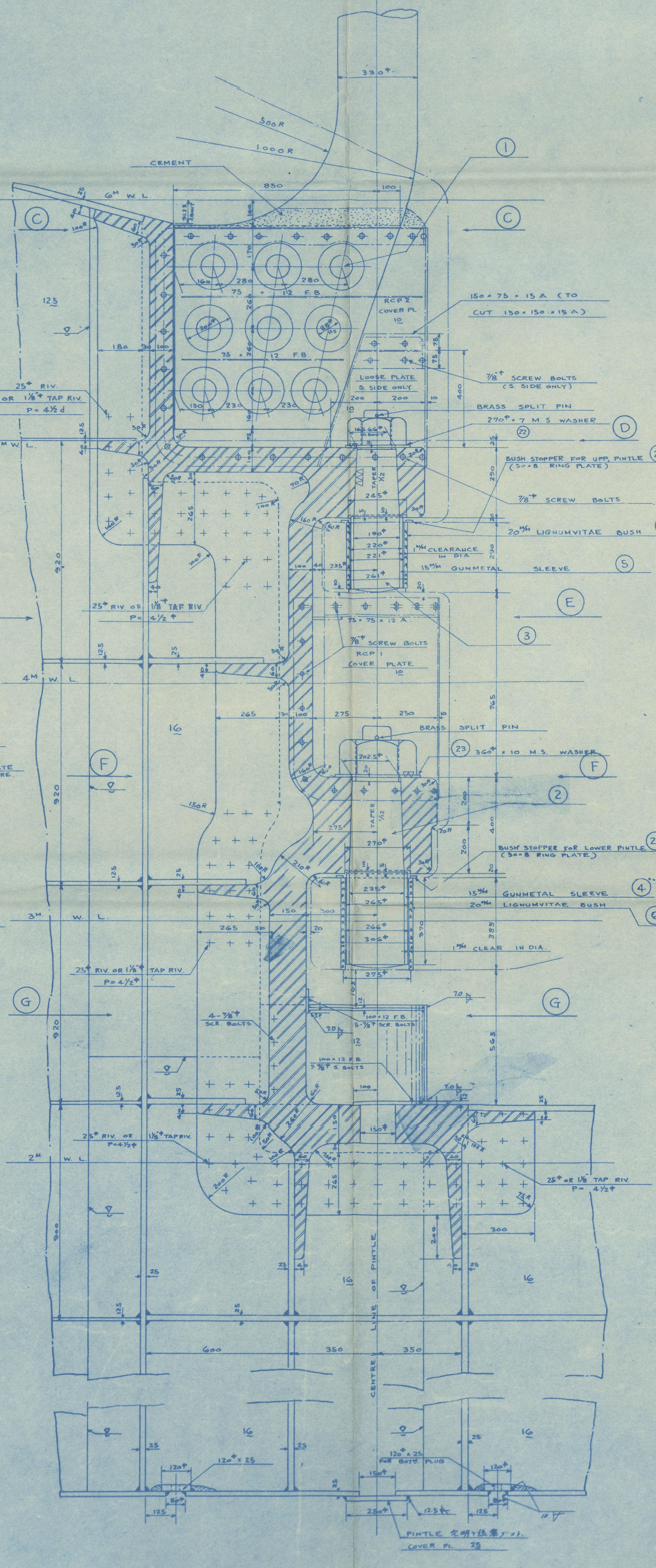
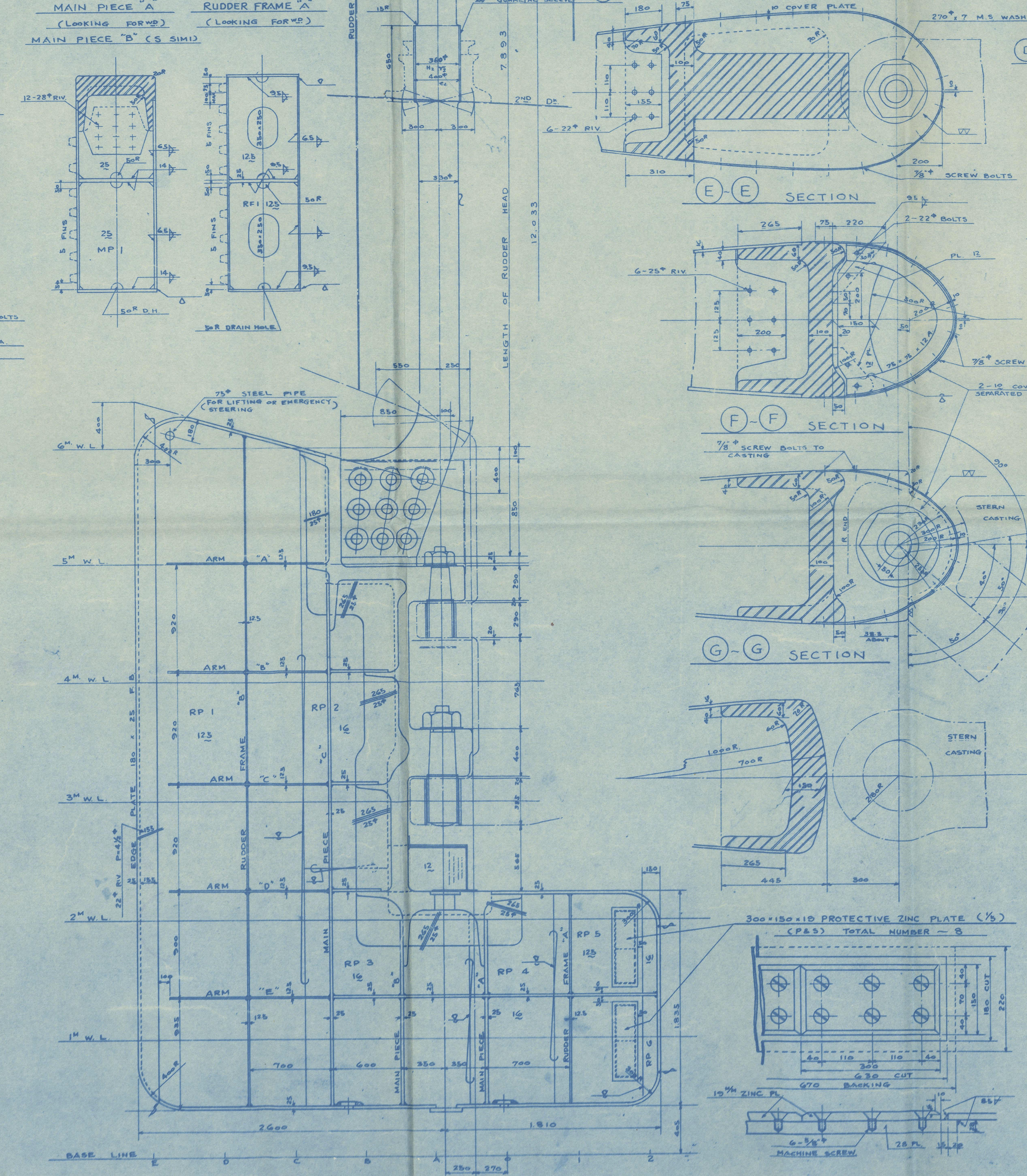
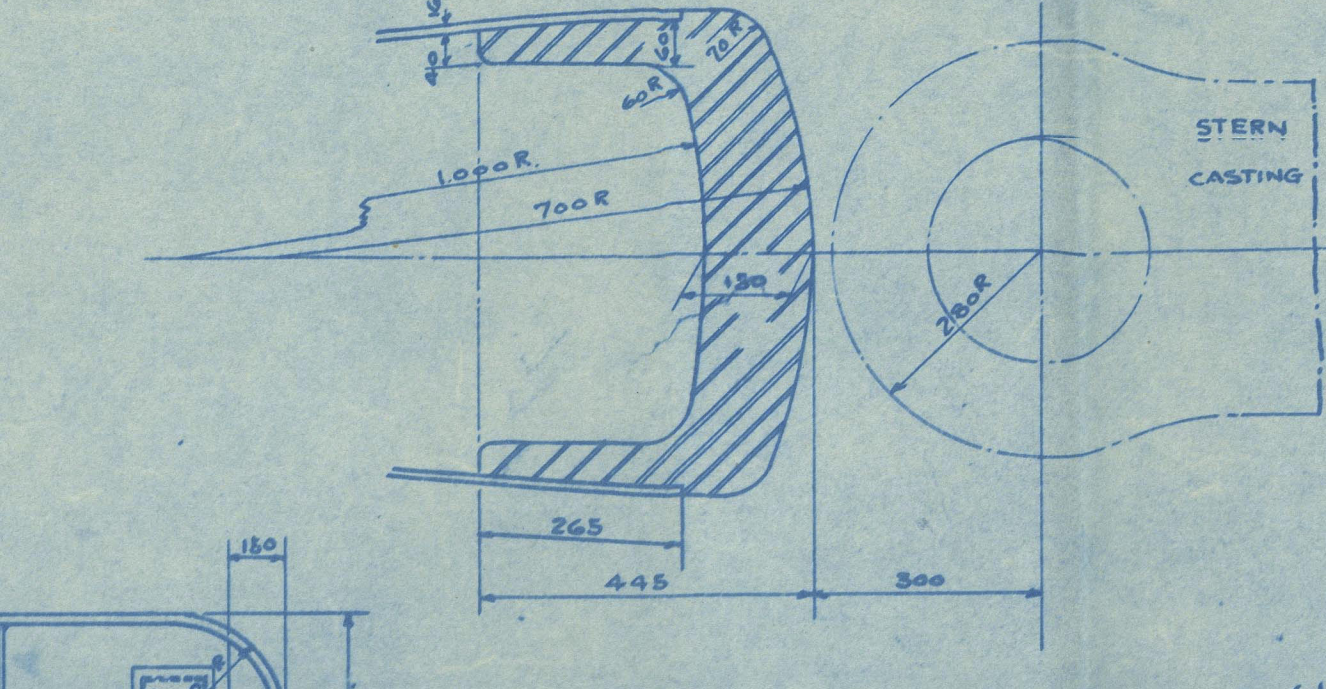
E-E SECTION



F-F SECTION



G-G SECTION



PARTICULARS:

PRINCIPAL DIMENSIONS	14'0" x 15'0" x 15'0" x 8'4"
SEA SPEED	17 KNOTS
TOTAL RUDDER AREA (A)	18'8"
BALANCING RATIO (M/A)	18'1"
RUDDER AREA (M/A)	65'1"
DIA OF RUDDER HEAD (RULE)	L.R. = 325" H.K. = 323"
(ACTUAL)	325"

SUBJECT	MATERIAL	APPROX. WEIGHT
RUDDER PLATE (WITH COVER PL.)	MILD STEEL (SM41)	4'377
RUDDER HEAD	FORGED STEEL (SF44A)	6'150
MAIN PIECE (CASTING)	CAST STEEL (SC41)	7'500
(PLATE)	MILD STEEL (SM41)	0'817
RUDDER FRAME, ARM & EDGE PLATE	MILD STEEL (SM41)	1'660
FITTINGS (ON OTHER PLAN)		1'174
TOTAL		21'578

- GENERAL NOTES
- ALL DIMENSIONS IN "M" EXCEPT AS NOTED OTHERWISE
  - RUDDER TO BE W.TIGHT. TO BE AIRTESTED WITH 1"60" IN PRESSURE AFTER COMPLETED
  - INTERIOR TO BE COATED ENOUGH WITH ANTI CORROSIVE PAINT
  - FOR FORGINGS & CASTINGS THE REQUIREMENTS OF L.R. & N.K. RULES FOR TENSION & BEND TESTS ARE TO BE SATISFIED
  - CASTINGS ARE TO BE SUBJECTED TO PERCUSSIVE & HAMMERING TESTS
  - FITTINGS ARE SHOWN ON OTHER PLAN

SYMBOLS	WHICH	MEANS	MARGIN FINISH
—	ROUGH	SURFACE	NONE
—	SMOOTH	SURFACE	NONE
—	ROUGH	FINISHING	NEEDFUL
—	ORDINARY	FINISHING	NEEDFUL
—	FINE	GRINDING	NEEDFUL

ORDER K 11430 140

ITEM 1

MOULDING, CASTING, MACHINING, PRODUCTION

RUDDER HEAD 2 2 2 2

MAIN PIECE 2 2 2 2

RUDDER ARM 2 2 2 2

RUDDER FRAME 2 2 2 2

RUDDER PLATE 2 2 2 2

RUDDER HEAD 2 2 2 2

MAIN PIECE 2 2 2 2

RUDDER ARM 2 2 2 2

RUDDER FRAME 2 2 2 2

RUDDER PLATE 2 2 2 2

RUDDER HEAD 2 2 2 2

MAIN PIECE 2 2 2 2

RUDDER ARM 2 2 2 2

RUDDER FRAME 2 2 2 2

RUDDER PLATE 2 2 2 2

RUDDER HEAD 2 2 2 2

MAIN PIECE 2 2 2 2

RUDDER ARM 2 2 2 2

MITSUBISHI KAIUN  
VICTORIA MARU

RUDDER

(FINISHED PLAN)

DIMENSION 14'00x19'0105  
SCALE 1:100 CLASS 4.2  
HULL DESIGNING SECTION  
SHIP DESIGNING DEPARTMENT  
MITSUBISHI  
CHIEF DEPT.  
CHIEF  
HEAD  
CHECKED  
DRAWN  
DATE  
MITSUBISHI ZOSEN KAWASAKI YACHTA  
YOKOYO  
JAPAN  
SHIP 1437  
DSN H-107  
010382-012347-0123

Lloyd's Register  
Foundation

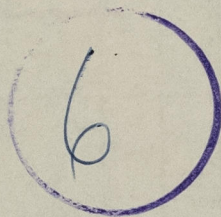


"VICTORIA MARU" ★

Rudder (as built)

DEPT.

ON.



© 2021

Lloyd's Register  
Foundation

012888 - 012897 - 0183



1  
MITSUBISHI KAIUN  
VICTORIA MARU

RUDDER

(FINISHED PLAN)

DIMENSION 14.00x19.0x10.5

SCALE 1 : 100 CLASS N.R.

HULL DESIGNING SECTION  
SHIP DESIGNING DEPARTMENT  
NAGASAKI WORKS

CHIEF OF DEPT

CHIEF *T. Okabe*

HEAD *Y. Matsushita*

CHECKED *d. Igarashi*

DRAWN

DATE REG NO.

MITSUBISHI ZOSEN KABUSHIKI KAISHA  
TOKYO JAPAN

SHIP NO 1437

DSN NO H-107

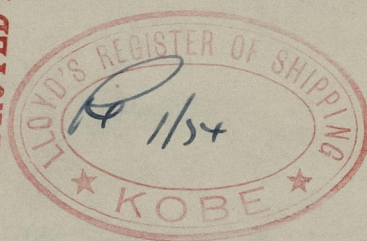
012888-012897-0183

SMK

RPT. No 291

AS BUILT

CERTIFIED COPY OF "APPROVED PLAN"



© 2021

Lloyd's Register  
Foundation