

Lloyd's

— S.S. No 193. #74. —  
— STERN FRAME. —  
(WRT. IRON.)  
— Scale  $\frac{1}{2}'' = 1 \text{ ft.}$  —

20.5.14

9.6.14 (No 194)

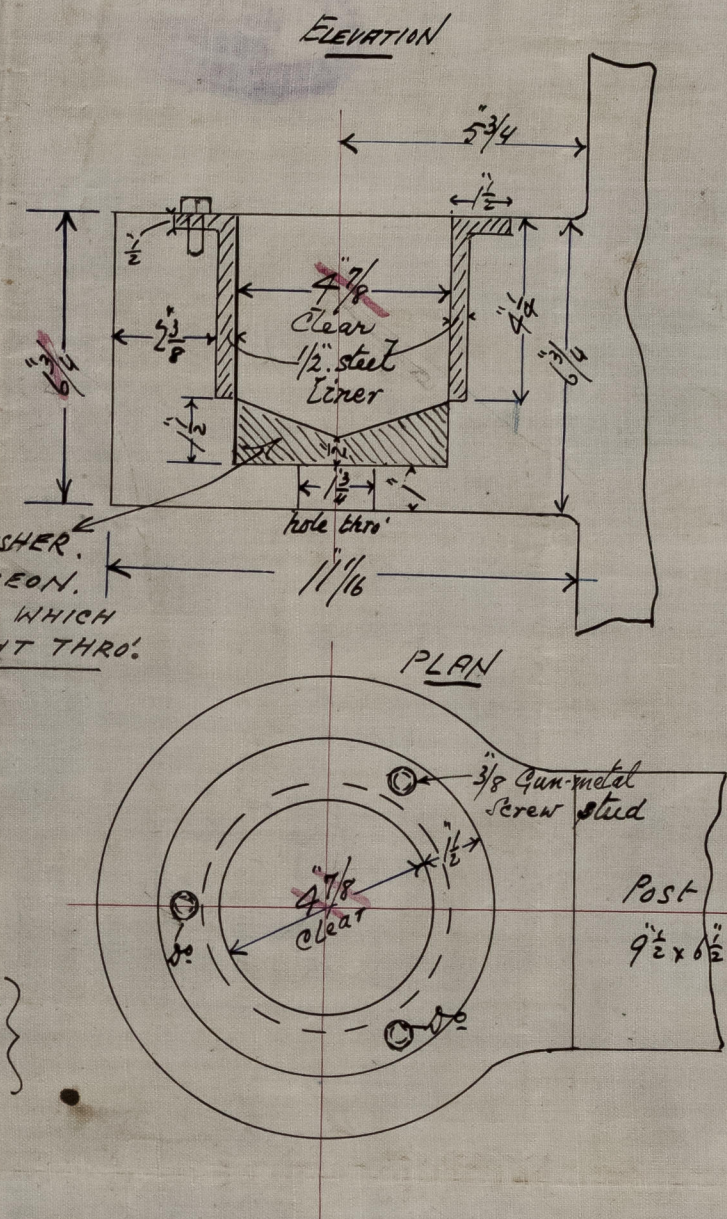
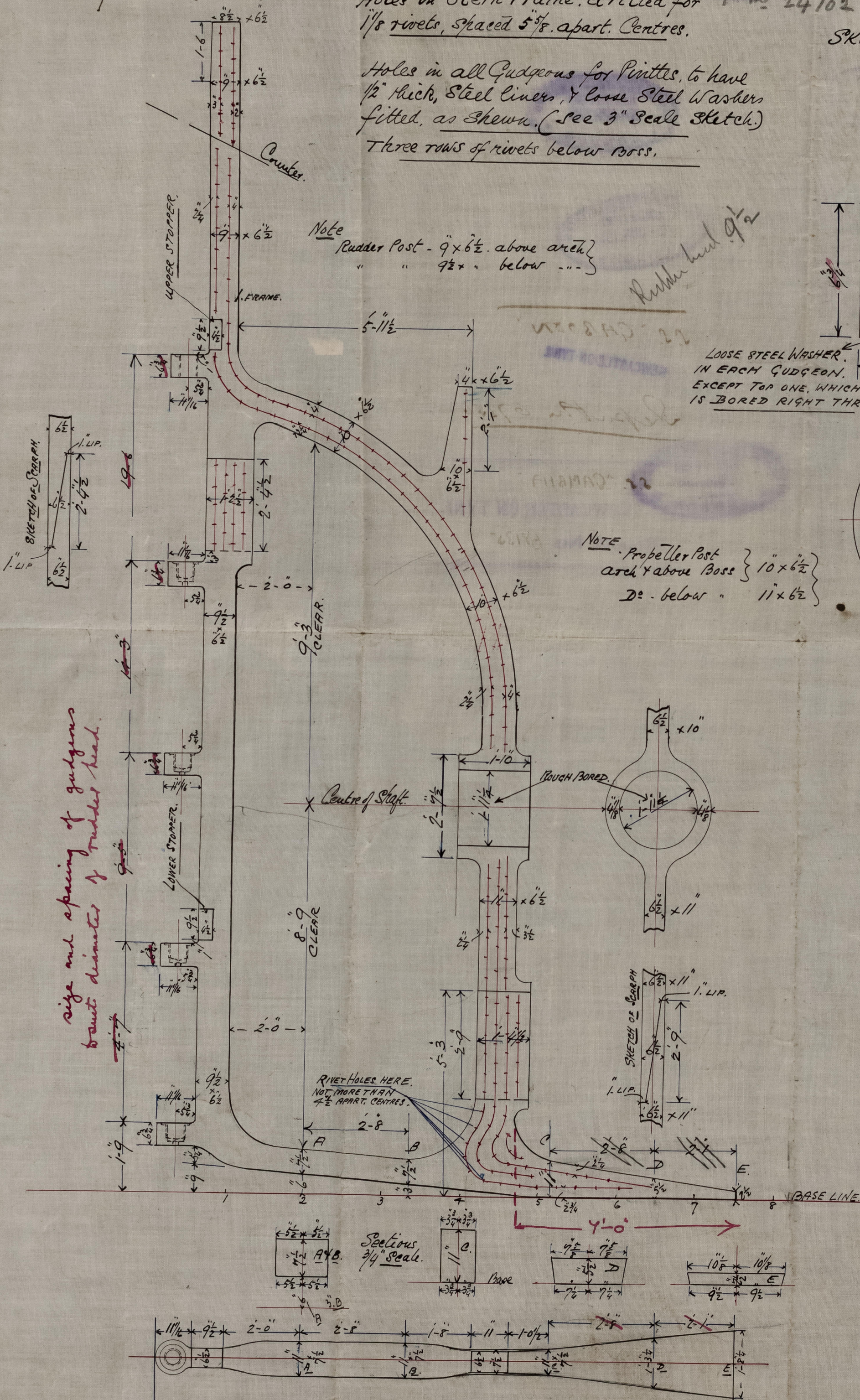
Principal Dimensions 337'-0" x 48'-6" x 25'-0" w/d

Holes in Stern Frame. Drilled for  $1\frac{1}{8}''$  rivets, spaced  $5\frac{3}{8}''$  apart. Centres.

Holes in all Gudgeons for Pinrites, to have  $\frac{1}{2}''$  thick, Steel Liners, & loose Steel Washers fitted, as Shewn. (See 3" Scale Sketch.)

Three rows of rivets below boss.

SKETCH OF STERN FRAME GUDGEONS.  
Scale  $\frac{3}{4}'' = 1 \text{ ft.}$



NOTE: Propeller Post  
Arch & above Boss }  $10 \times 6\frac{1}{2}$   
Do. below " }  $11 \times 6\frac{1}{2}$

size and spacing of gudgeons  
boust diameter of rudder head.

C.F.  
19.5.14



© 2021  
Lloyd's Register  
Foundation

012888-012891-0063

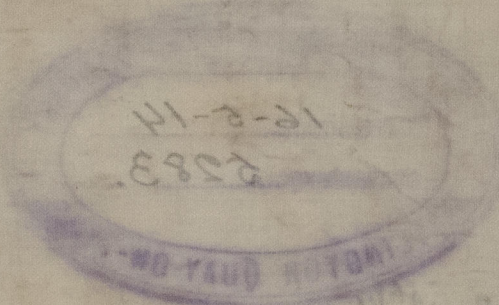


Tyne Iron S.B. Co. Ltd. No 143 Ship  
Plan of Stern Frame 194

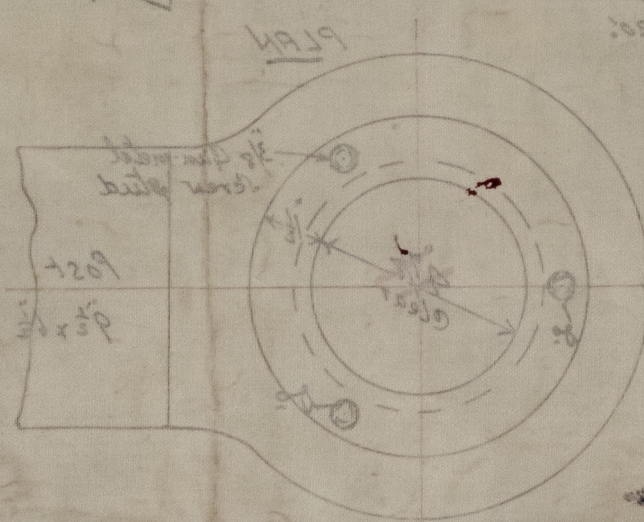
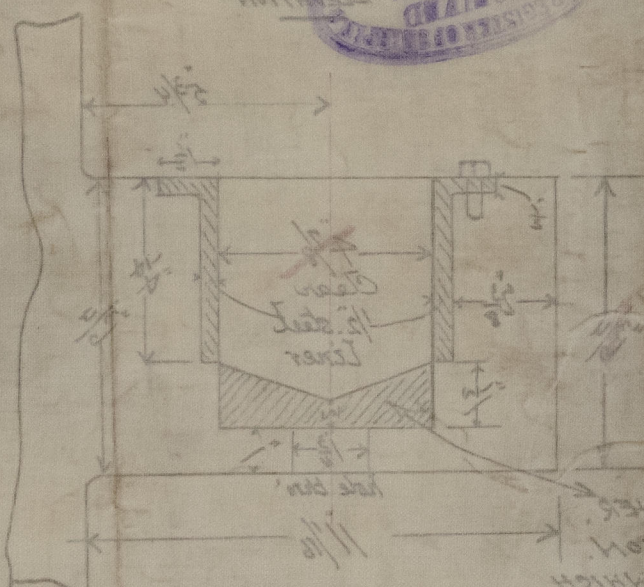
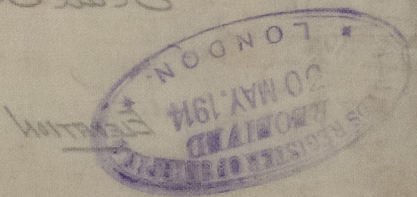
— 2.2.1913.44 —  
— STERN FRAME —

(WRT. IRON)

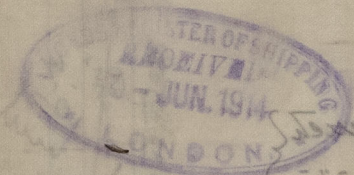
— 2.2.1913.44 —



SKETCH OF STERN FRAME CUDGONS  
Scale 3/16"



Notes in all Cudgons to have  
the thick steel lining & cover  
fitted as shown (see 2-2-13-44 sketch)  
Three rows of rivets below bars

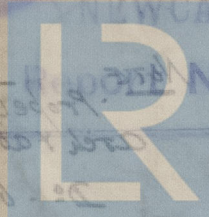


S.S. "CAMBIA"  
NEWCASTLE-ON-TYNE

Report No 67356

S.S. "CAMBIA"

NEWCASTLE-ON-TYNE



© 2021  
67135

Lloyd's Register  
Foundation

012 888 - 012 897 - 0063