

UPPERDECK

CHAIN LOCKER

DRAINAGE WELL POINT

FRESHWATER TANK 20.5 m³

DIESEL OIL TANK 17.5 m³

SEA CHEST

LUB OIL TANKS

BOTTOM FOR LIVING-ROOM

INNER BOTTOM

WASTEWATER TANK 21 m³

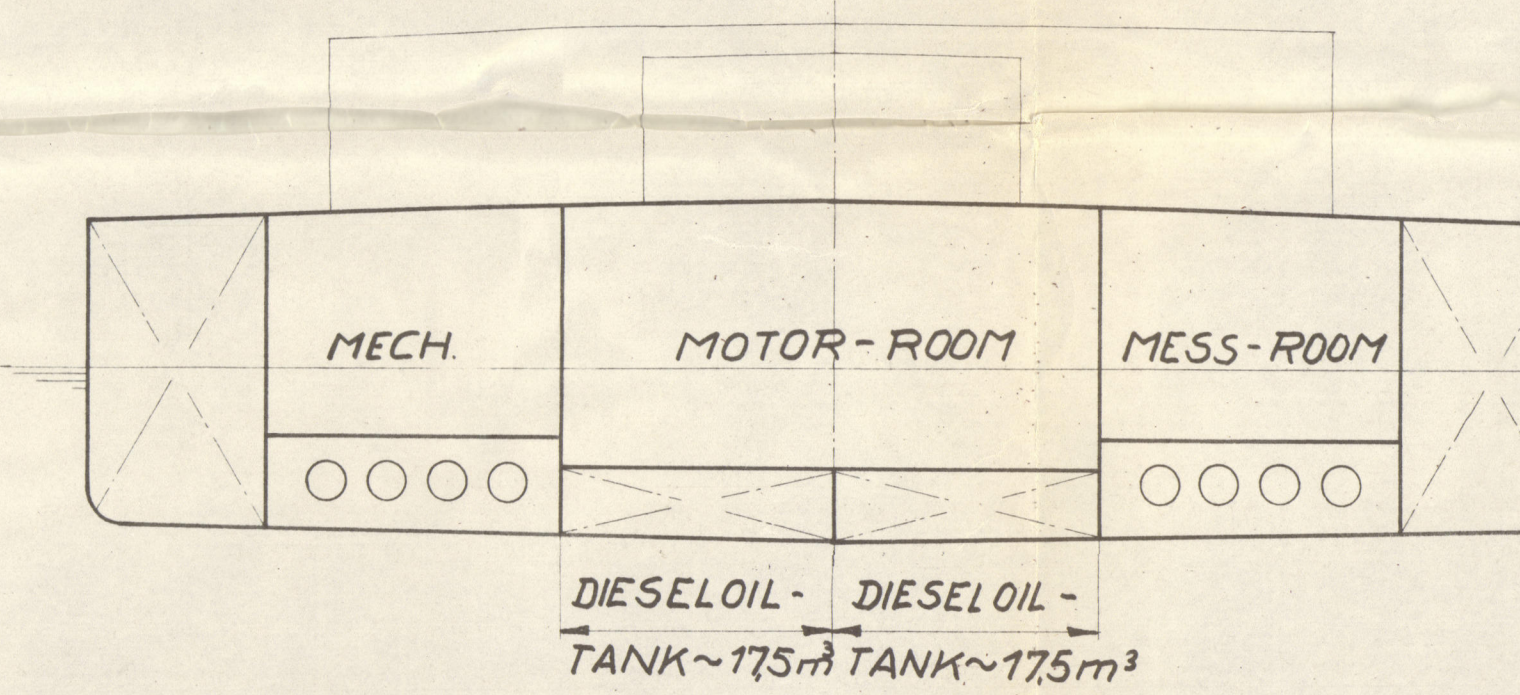
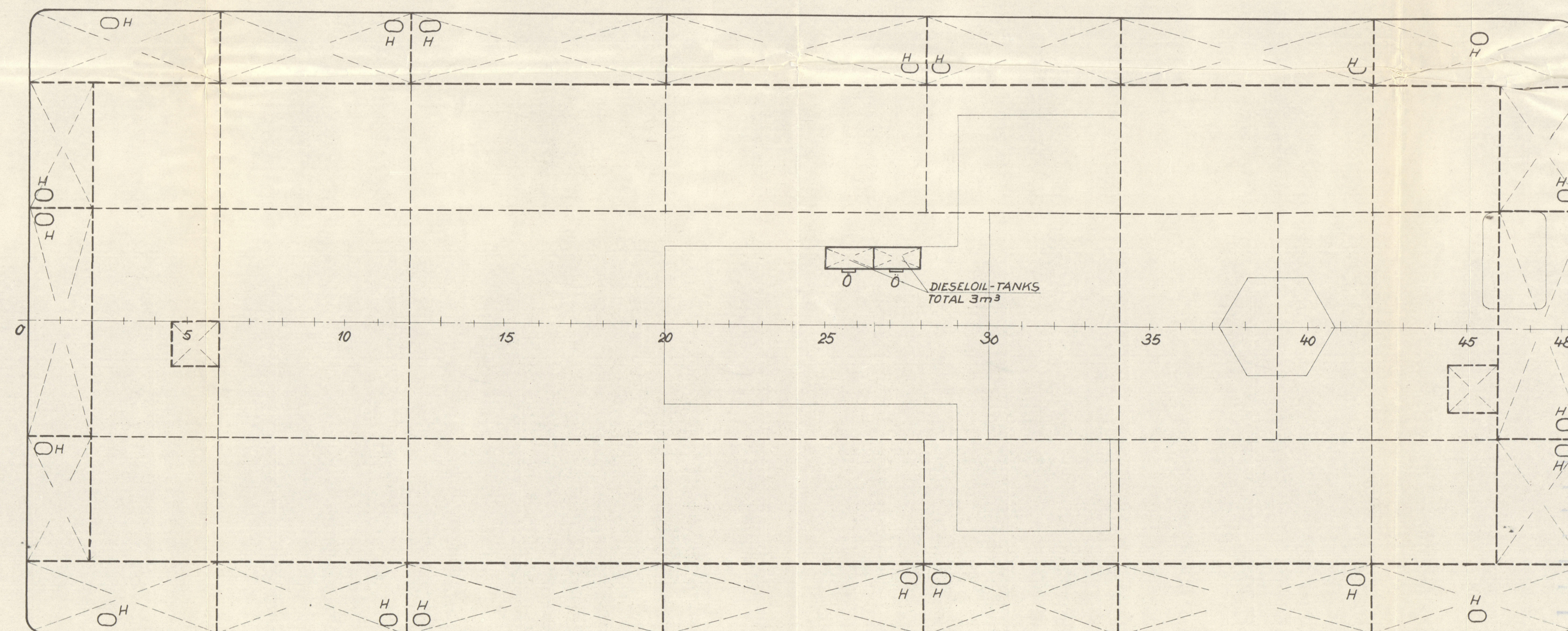
DRAINAGE WELL POINT

CHAIN LOCKER

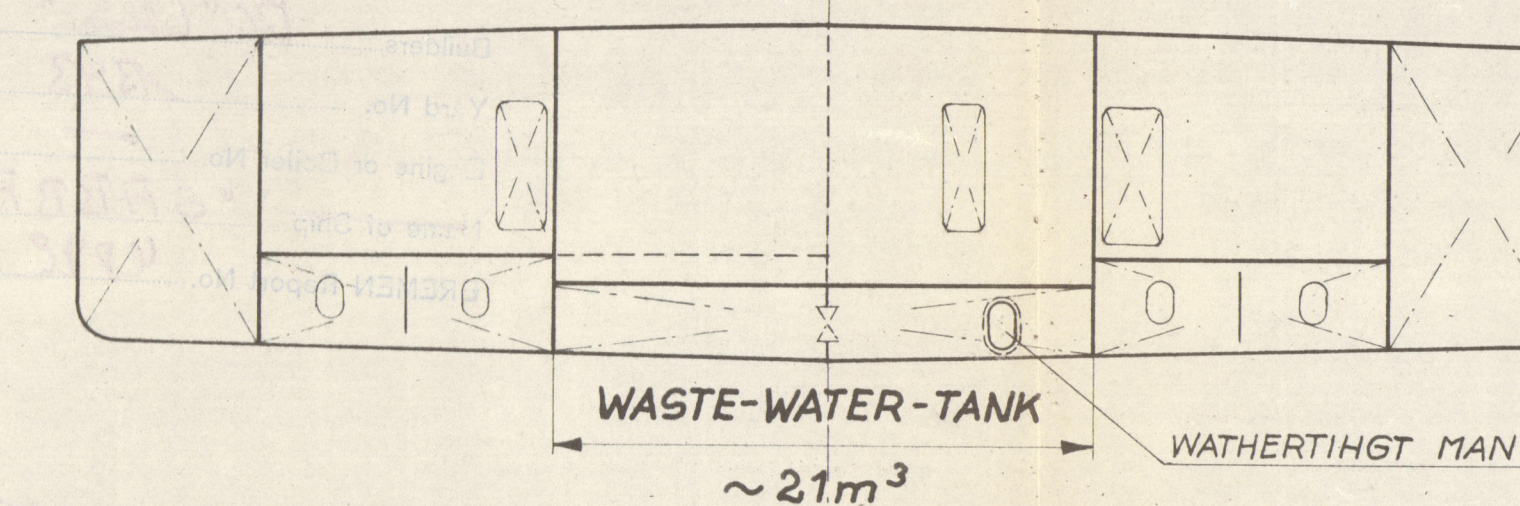
UPPERDECK

0 5 10 15 20 25 30 35 40 45 48

TEST HEAD in mm
VOLUMES NORE EXACT

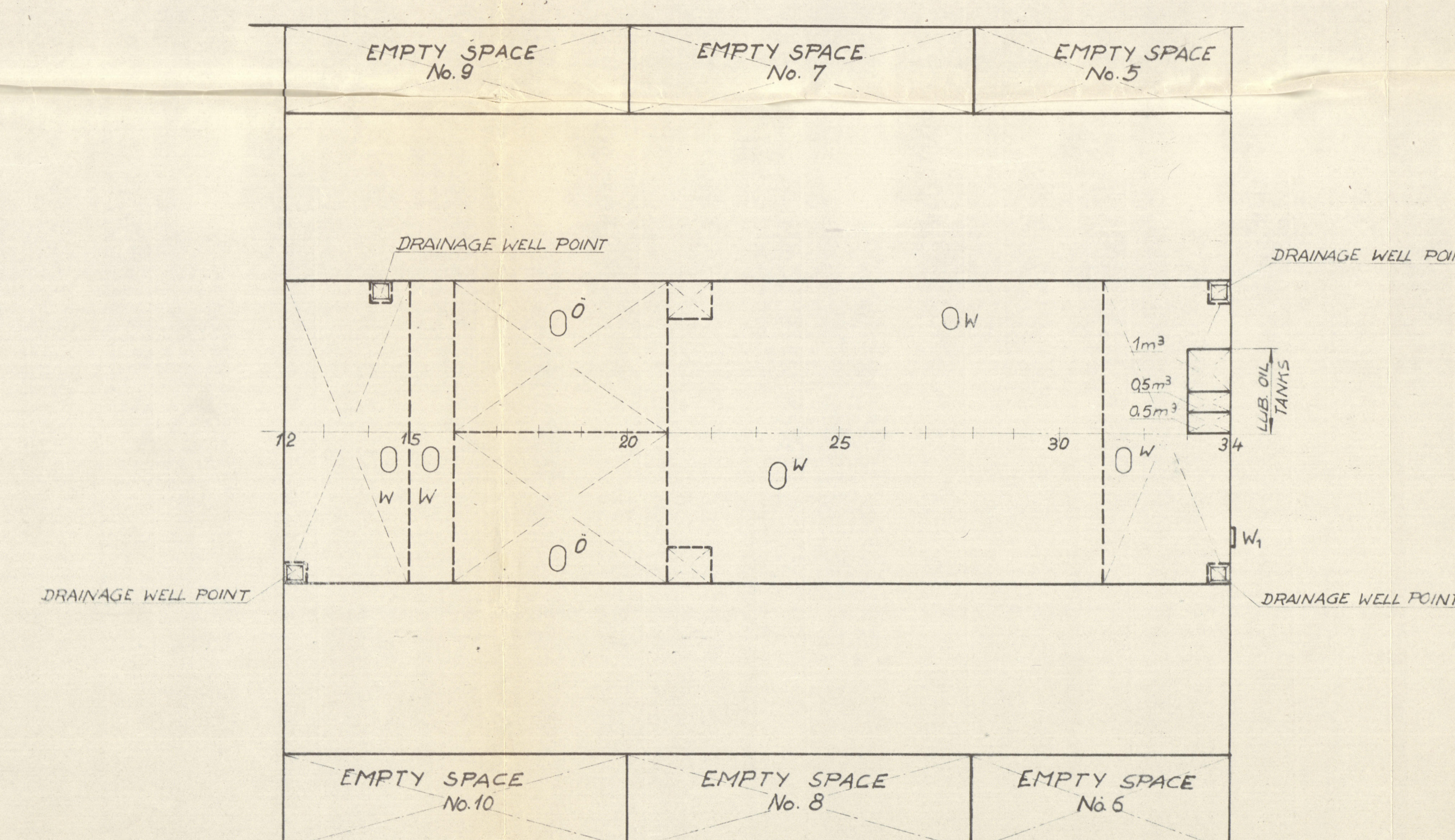
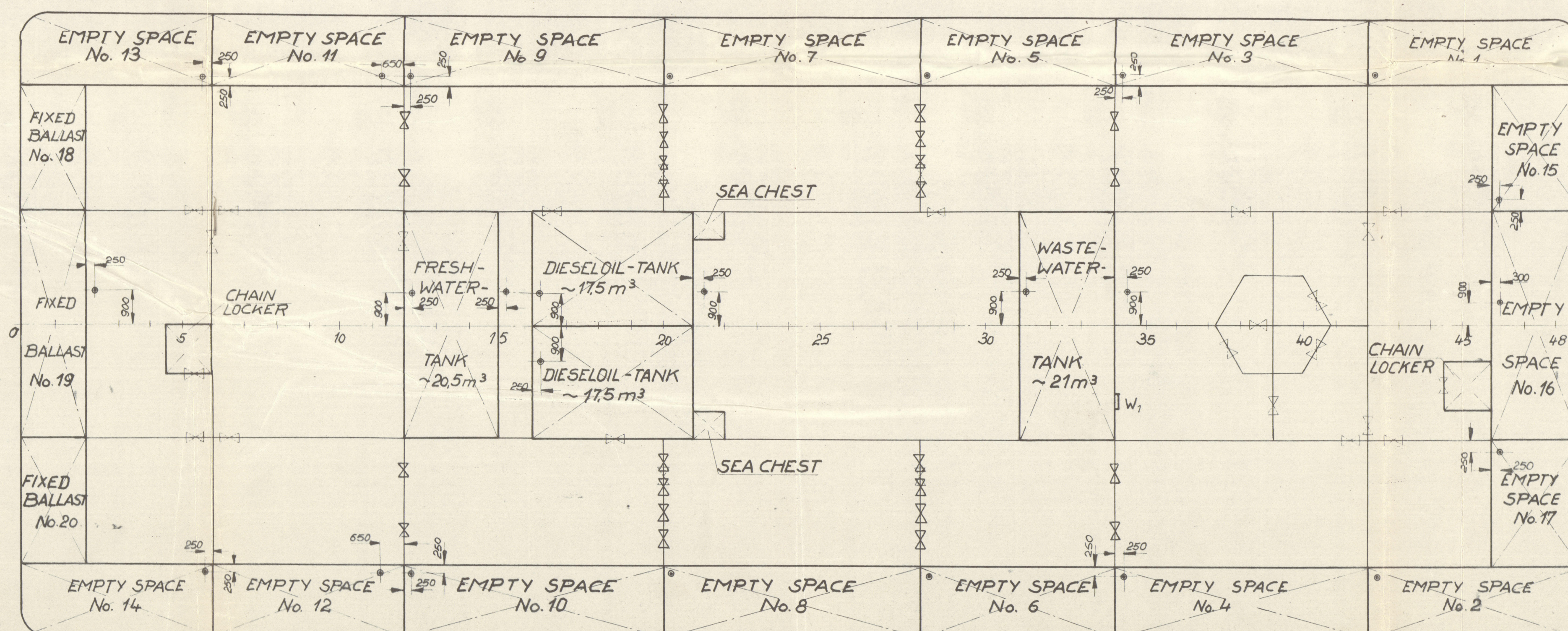


Spt. 34 von hinten gesehen



COMPARTMENT	NATURE OF TANKS	NUMBER OF TANKS	SINGLE VOLUMES (cu. mts)	TOTAL VOLUMES	FRAME	TEST HEAD	REMARKS
EMPTY SPACE No.1		1		4.4	Fr. 42 - FORE END	///	
EMPTY SPACE No. 2		1		4.0	Fr. 42 - FORE END	///	
EMPTY SPACE No. 3		1		71.7	Fr. 34 - Fr. 42	///	
EMPTY SPACE No.4		1		67.2	Fr. 34 - Fr. 42	///	
EMPTY SPACE No.5		1		55.4	Fr. 28 - Fr. 34	///	
EMPTY SPACE No.6		1		55.4	Fr. 28 - Fr. 34	///	
EMPTY SPACE No. 7		1		74.8	Fr. 20 - Fr. 28	///	
EMPTY SPACE No.8		1		74.8	Fr. 20 - Fr. 28	///	
EMPTY SPACE No.9		1		74	Fr. 12 - Fr. 20	///	
EMPTY SPACE No.10		1		74	Fr. 12 - Fr. 20	///	
EMPTY SPACE No.11		1		50.5	Fr. 6 - Fr. 12	///	
EMPTY SPACE No.12		1		50.5	Fr. 6 - Fr. 12	///	
EMPTY SPACE No.13		1		40.4	AFTER- Fr. 6	///	
EMPTY SPACE No.14		1		40.4	AFTER- Fr. 6	///	
EMPTY SPACE No.15		1		25.4	Fr. 46 - FORE END	///	
EMPTY SPACE No. 16		1		48.2	Fr. 46 - FORE END	///	
EMPTY SPACE No.17		1		25.4	Fr. 46 - FORE END	///	
FIXED BALLAST No.18		1			AFTER- Fr. 2	///	
FIXED BALLAST No. 19		1			AFTER- Fr. 2	///	
FIXED BALLAST No.20		1			AFTER- Fr. 2	///	
FRESH-WATER-TANK	FRESH-W	1	20.5	Fr. 12 - Fr. 15	920 über Oberdeck		
DIESELOIL -TANK	DIESELOIL	2	35	Fr. 15 - Fr. 21	920 über Oberdeck		
WASTE-WATER-TANK	WASTE-W	1	21	Fr. 31 - Fr. 21	920 über Oberdeck		
LUBRICANT OIL-TANK	LUB.OIL	1	9.5	Fr. 33 - Fr. 34	2500 u. Obkt. Tank		
LUBRICANT OIL-TANK	LUB.OIL	1	9.5	Fr. 33 - Fr. 34	2500 u. Obkt. Tank		
LUBRICANT OIL-TANK	LUB.OIL	1	1.0	Fr. 33 - Fr. 34	2500 u. Obkt. Tank		
DIESELOIL - TANK	DIESELOIL	1	1.5	Fr. 25 - Fr. 26 1/2	2500 u. Obkt. Tank		
DIESELOIL - TANK	DIESELOIL	1	1.5	Fr. 26 1/2 - Fr. 28	2500 u. Obkt. Tank		

INNER BOTTOM
Innenboden



REMARKS
H= WATERTINGT HINGED MAN HOLE PLAN 849110
W= WATERTINGT MAN HOLE WVN 34113
* ~~OUTLET MAN HOLE WVN 34114~~
BOTTOM PLUGS WVN 34104 AND DIN 87721/2
W= WATERTINGT MAN HOLE WVN 34111

BREMEN FIRST ENTRY REPORT No.....
MOUSRC. REF. GER. "Wesert" YARD No 1343
TANK CAPACITY PLAN

Bremen, 10th December, 1866
O. H. Meyer

Aktien-Gesellschaft „Weser“
Bremen
15. NOV. 1960
Schiffbaubüro

[illegible]

Title of Plan Tank Capacity Plan
"As built"
Builders RG "Wise"
Yard No. 1343
Engine or Boiler No. —
Name of Ship "SABBAR" ★
BREMEN Report No. 4892

RECORDS DEPT.
LONDON.



© 2021



Lloyd's Register
Foundation