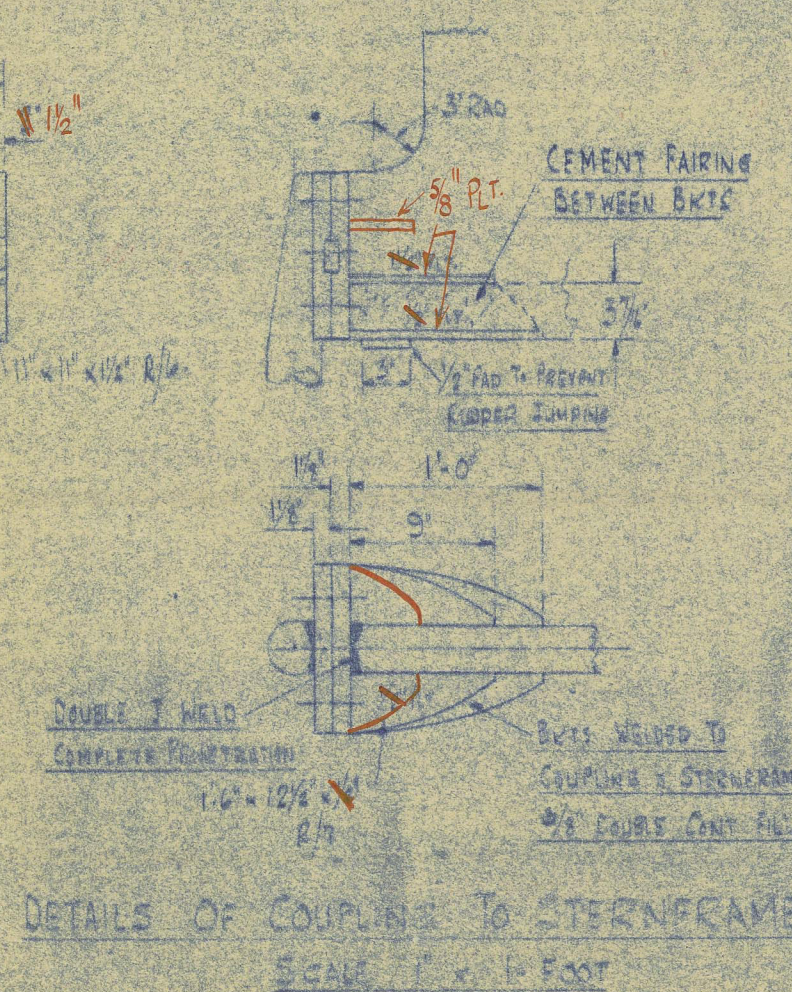
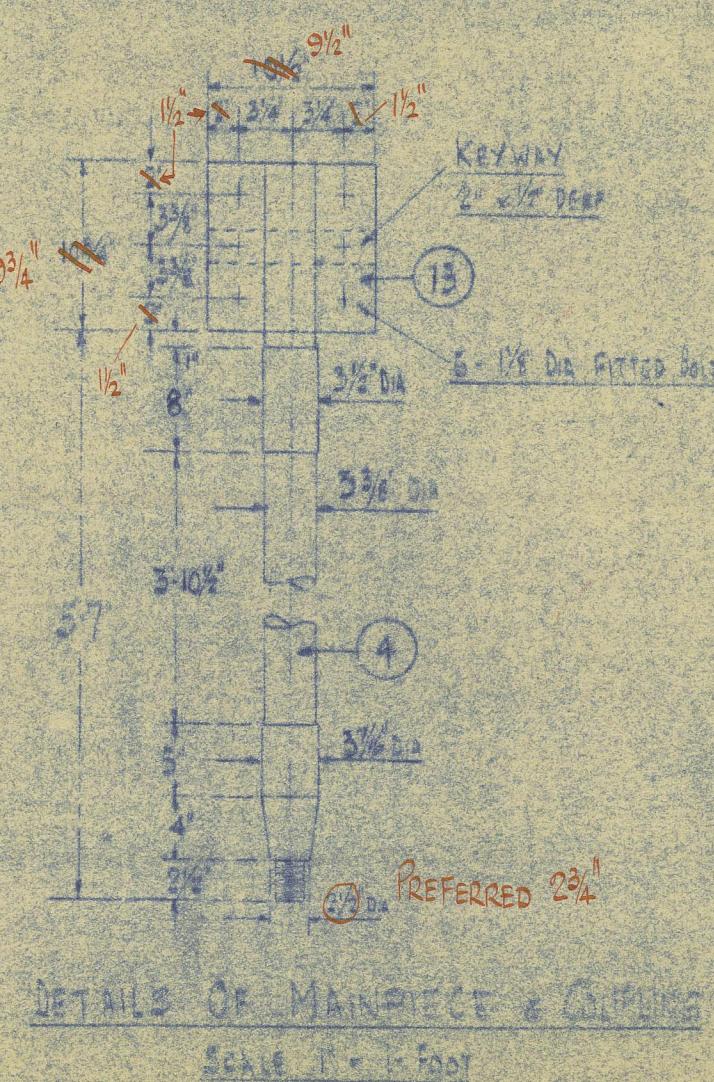
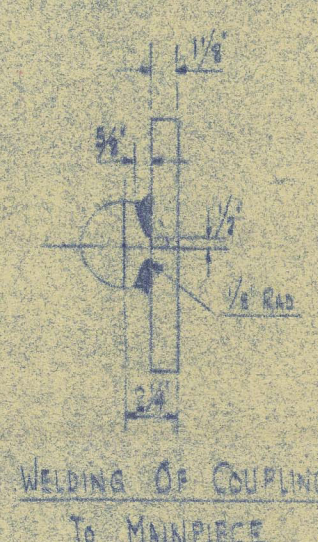
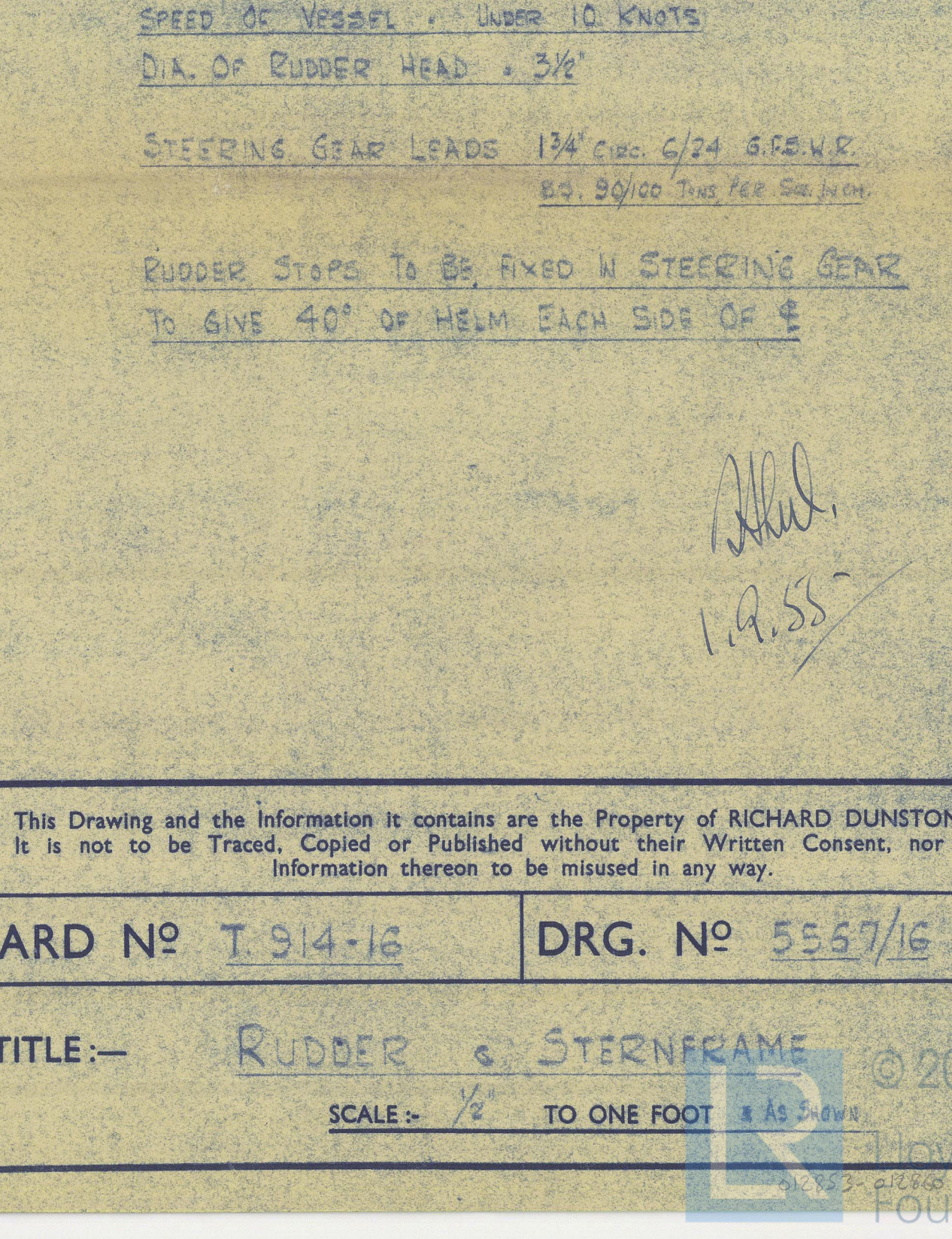
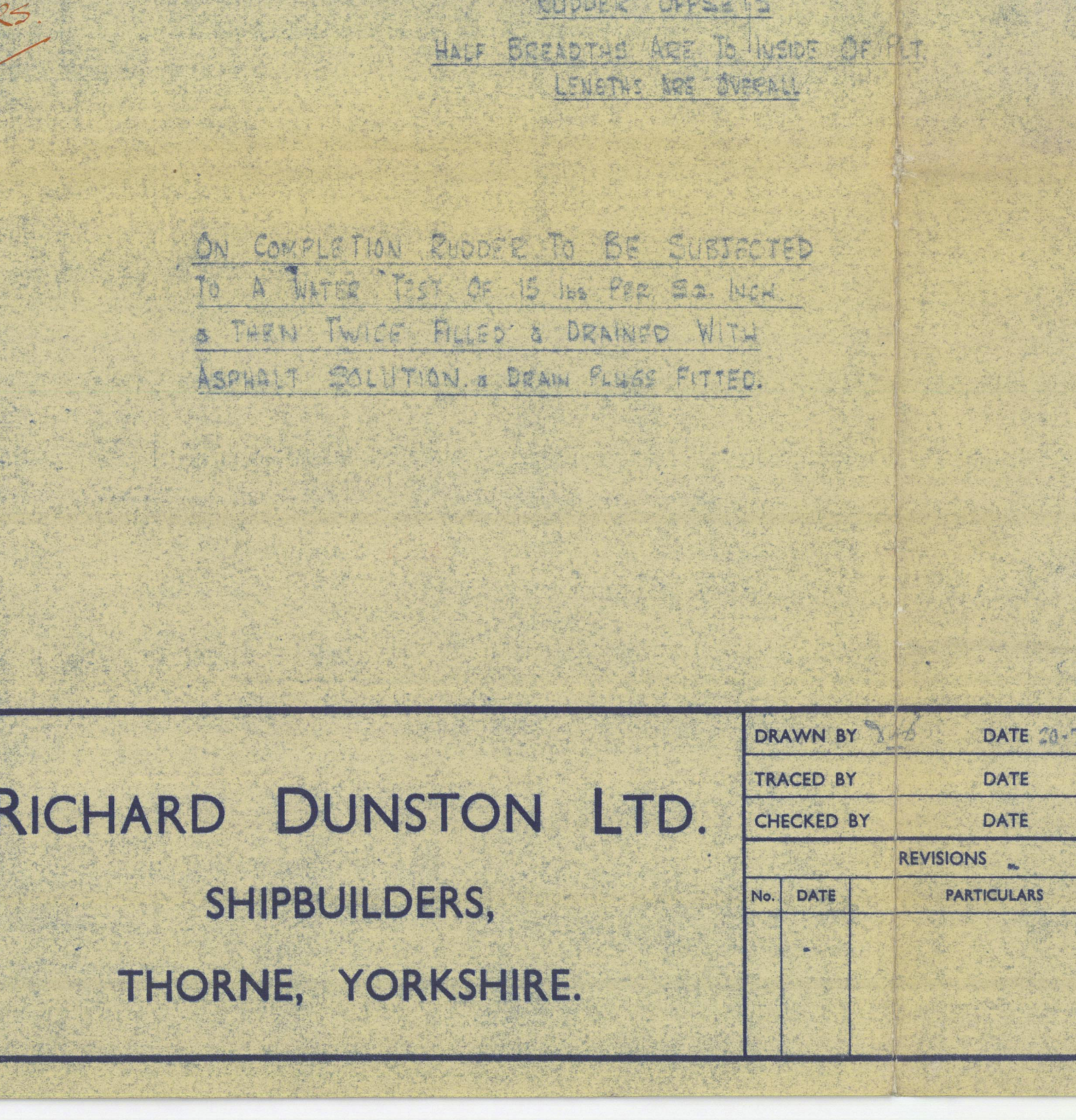
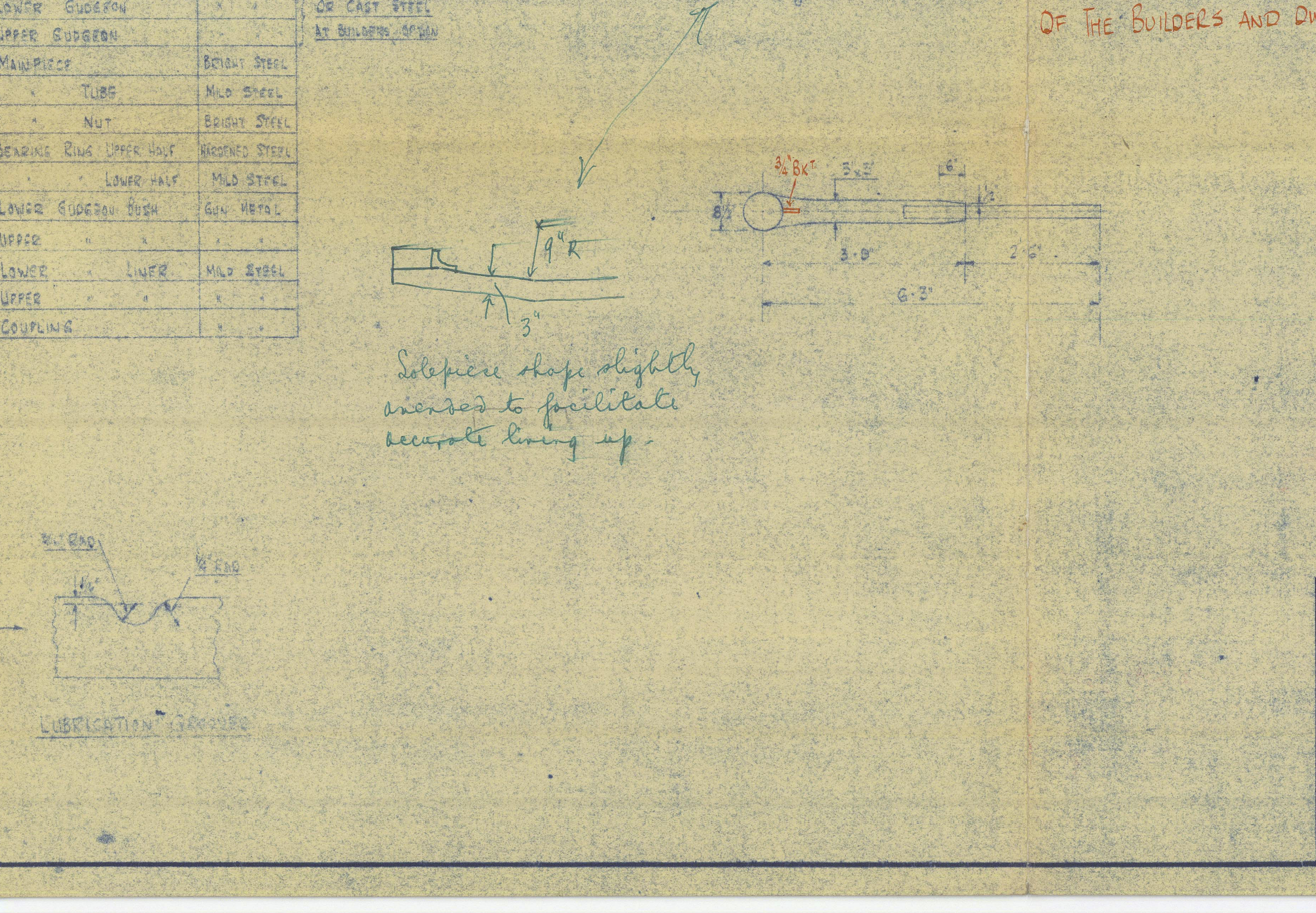
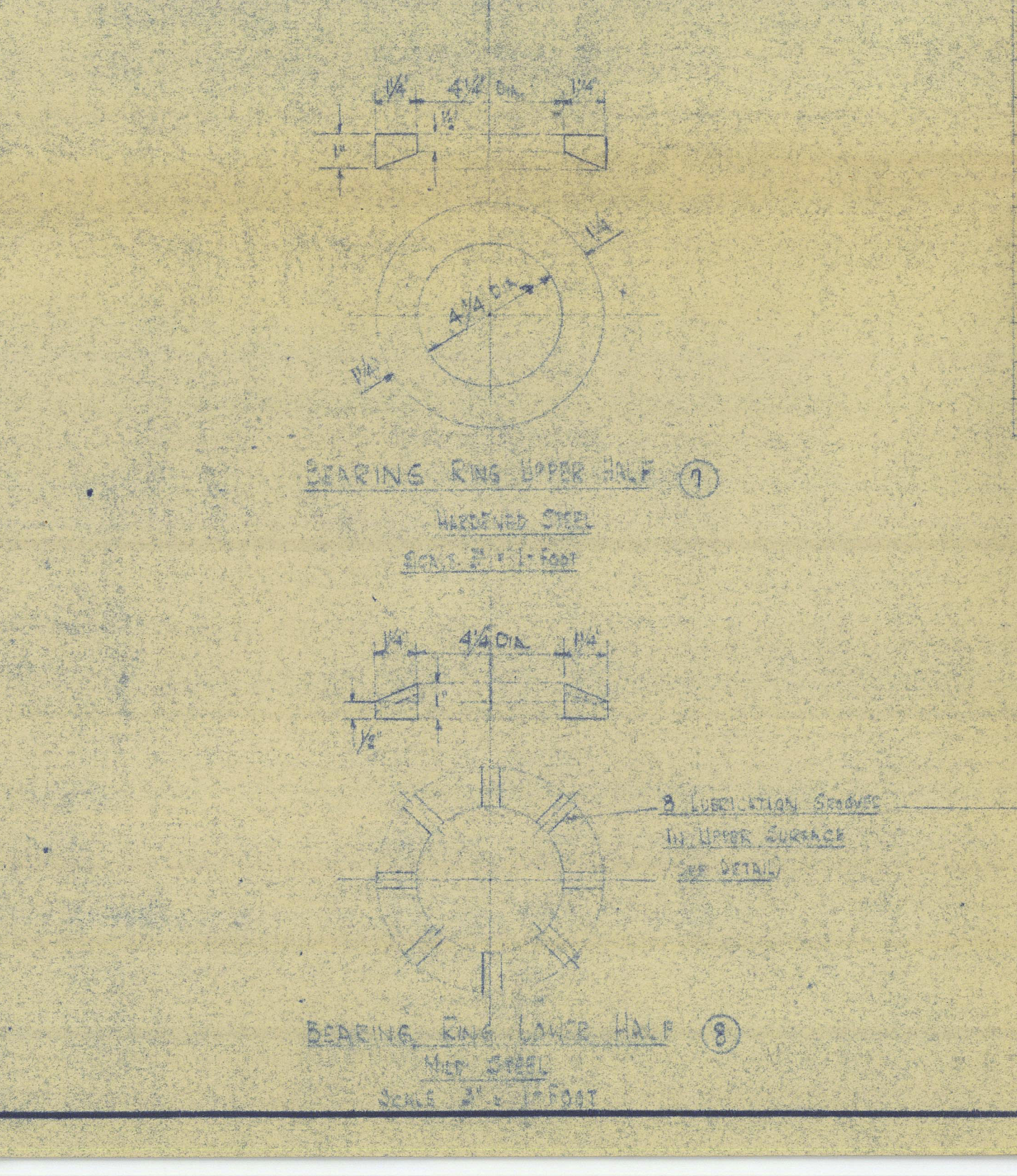
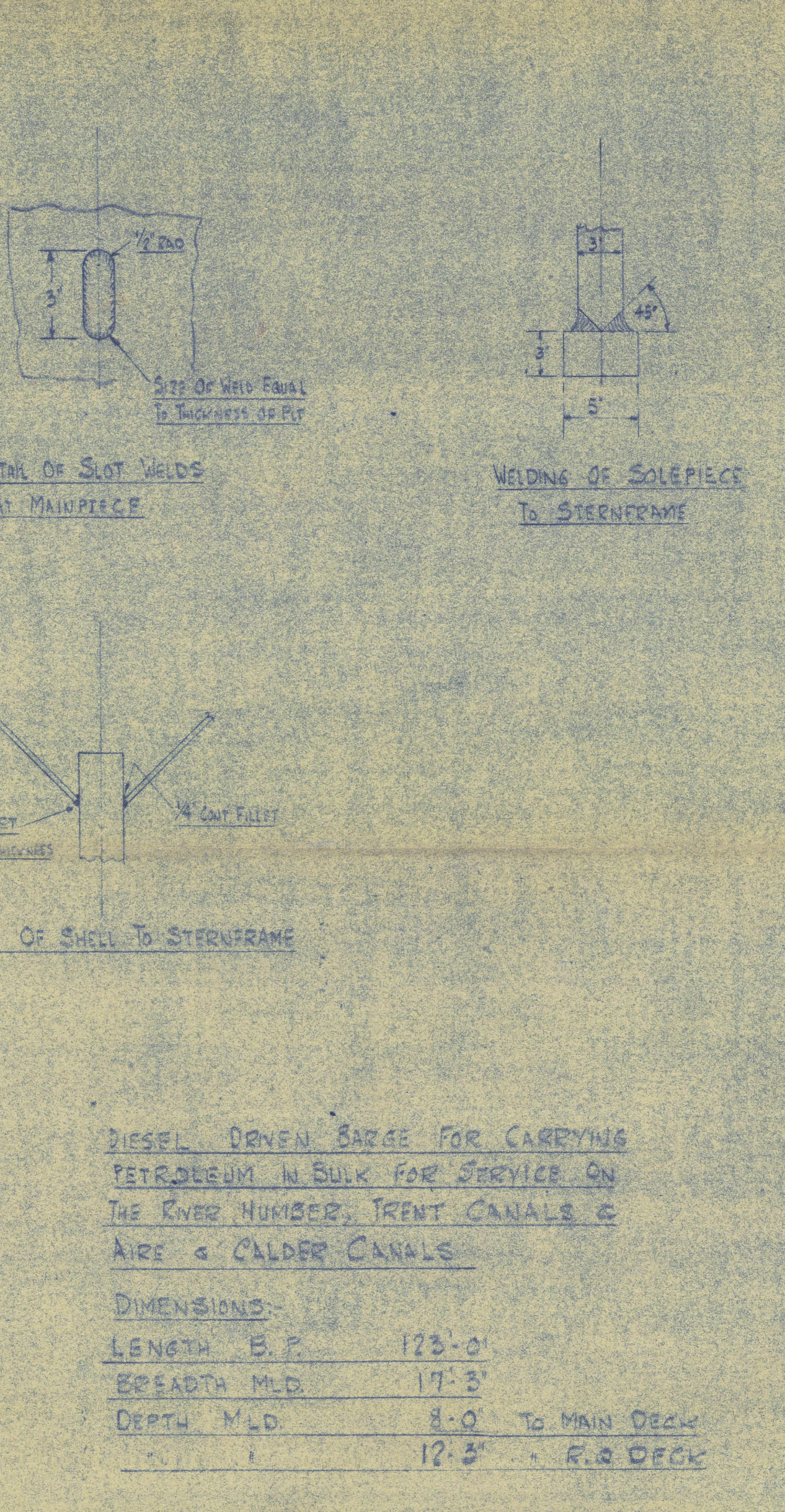
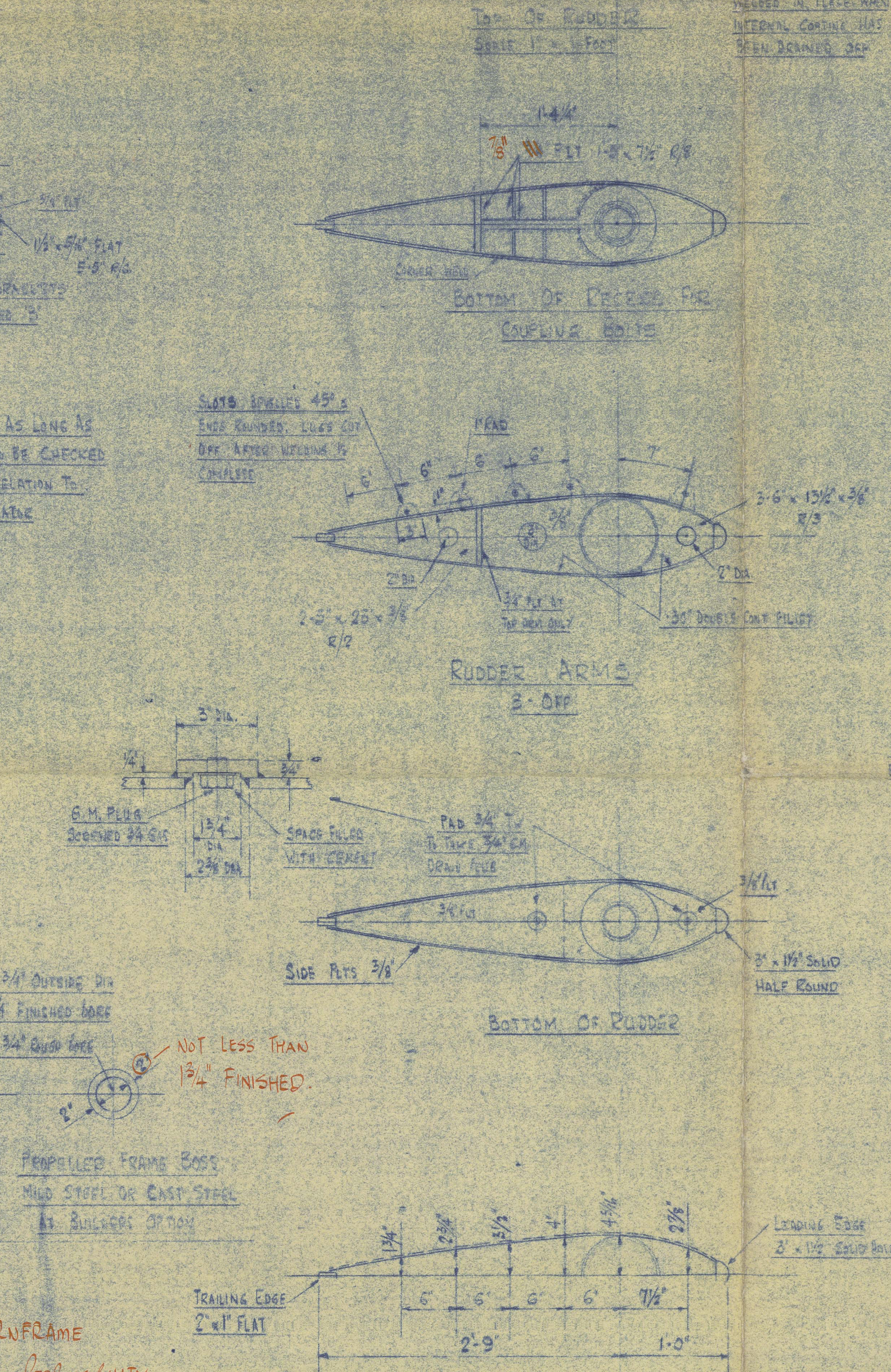
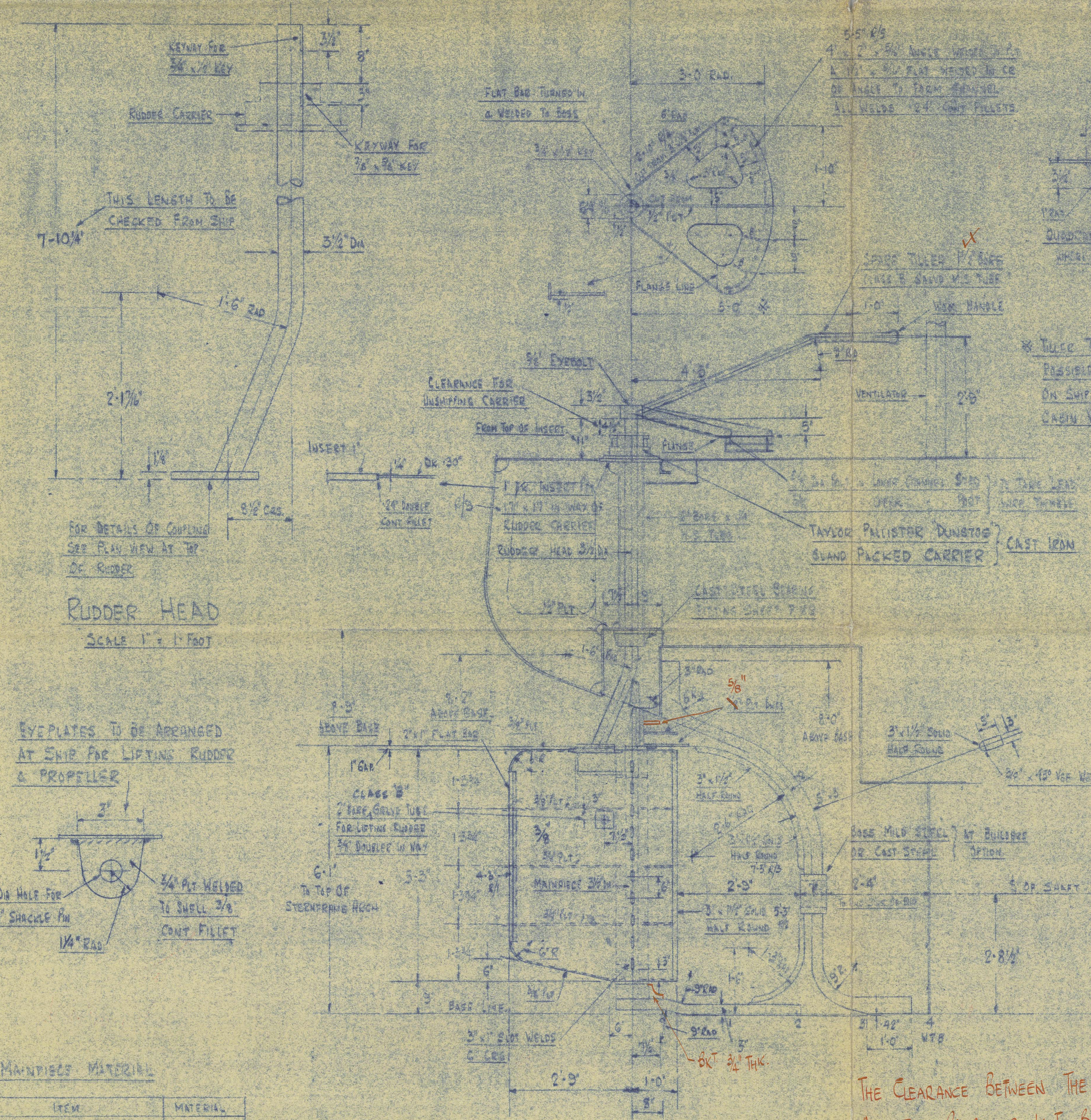
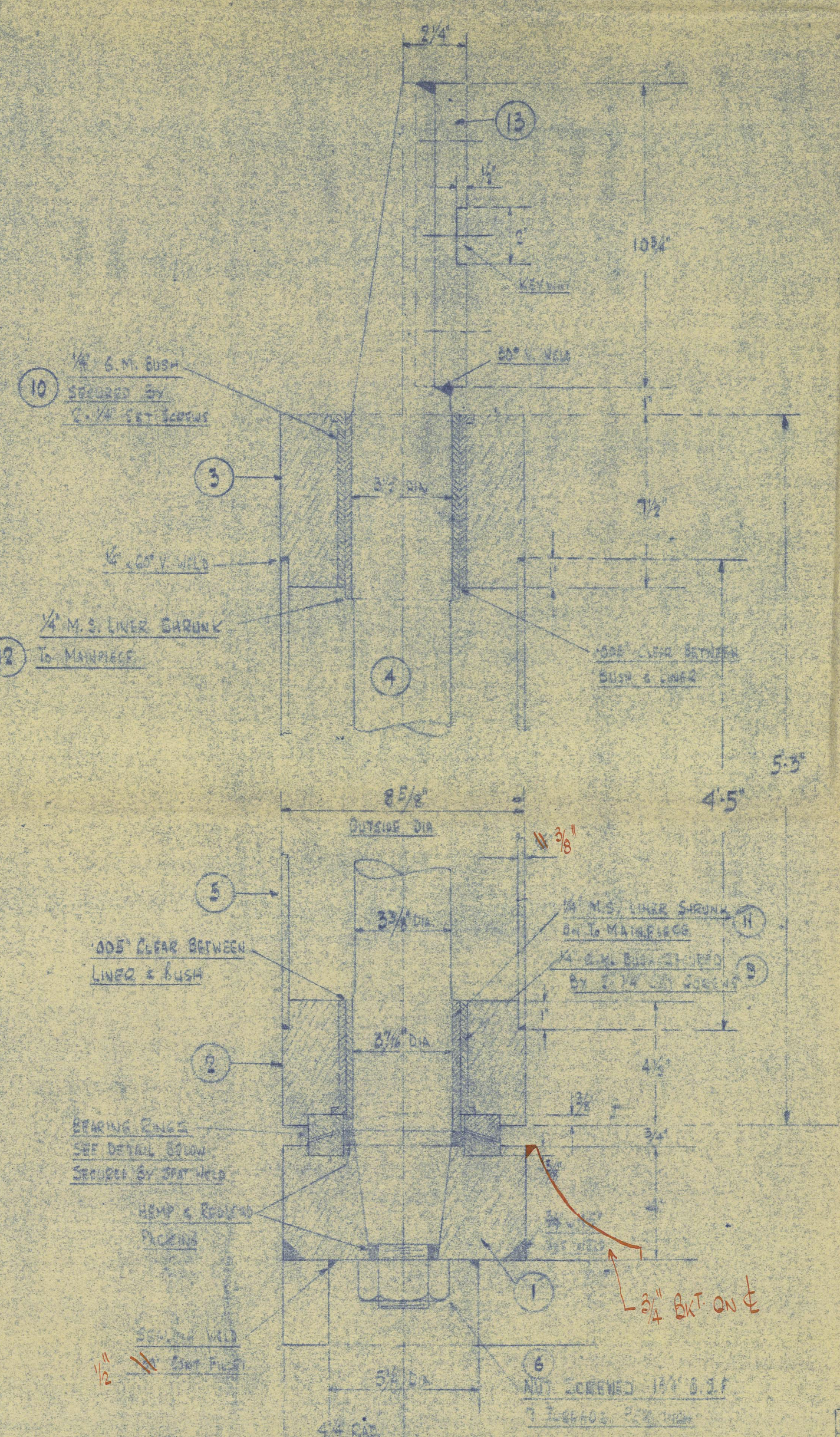
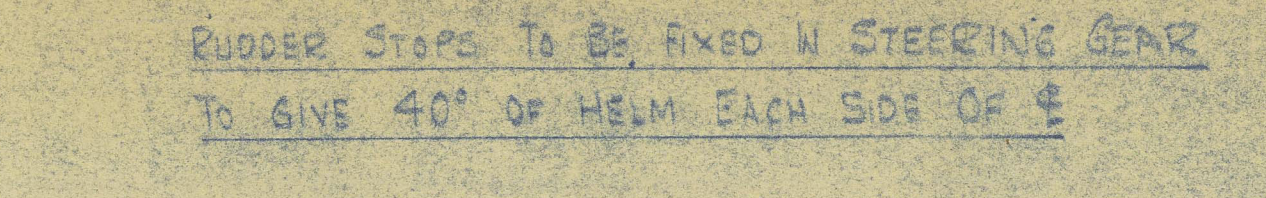
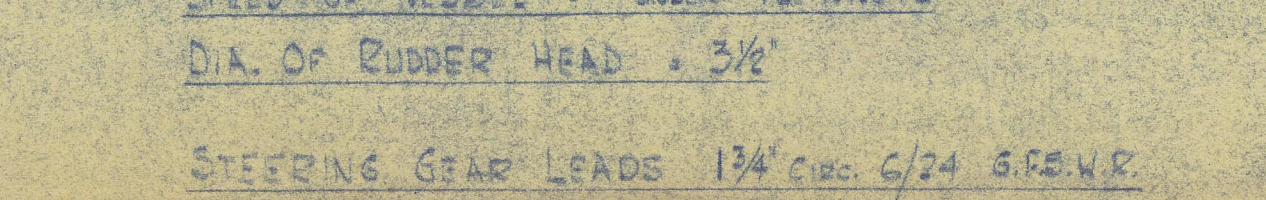
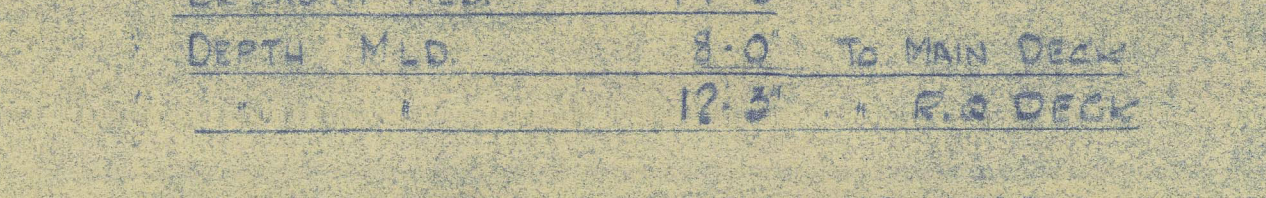
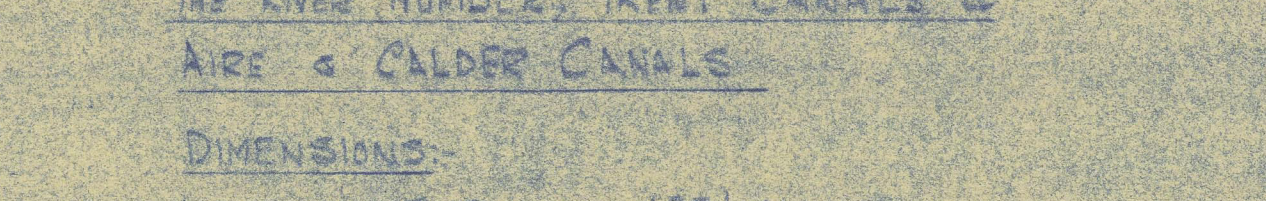
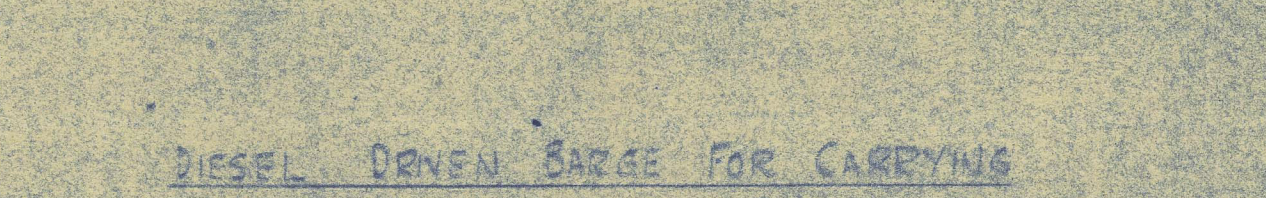
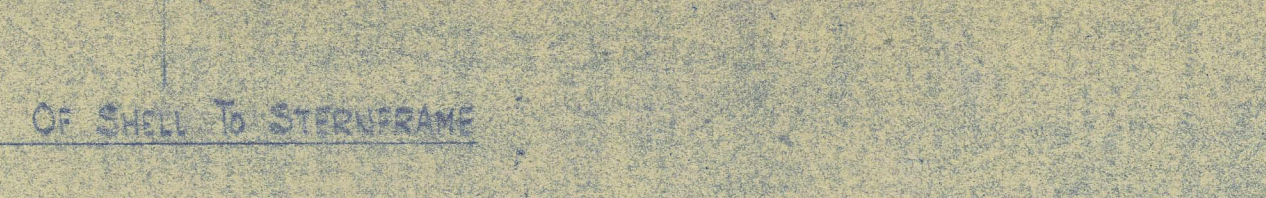
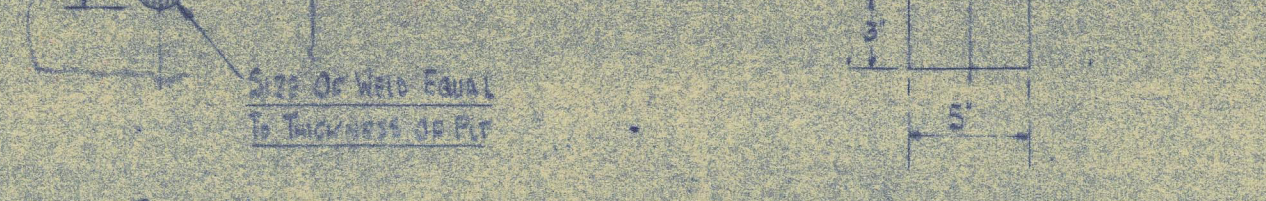
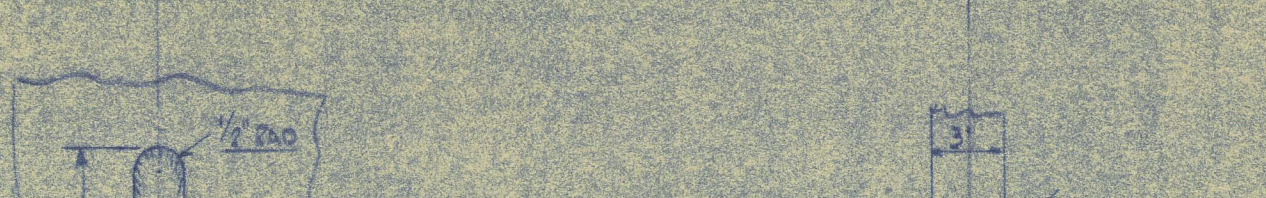
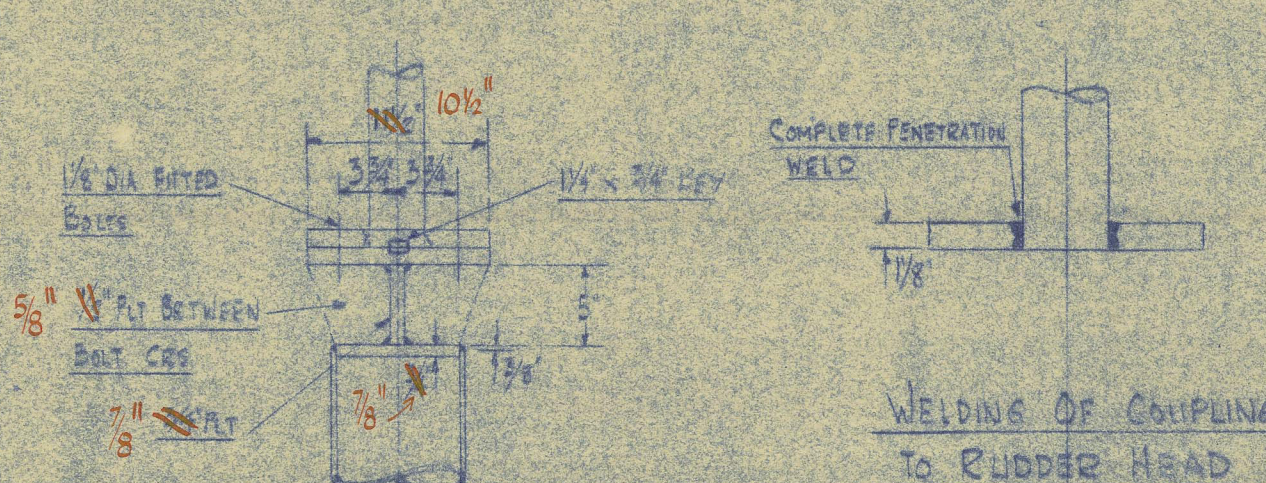
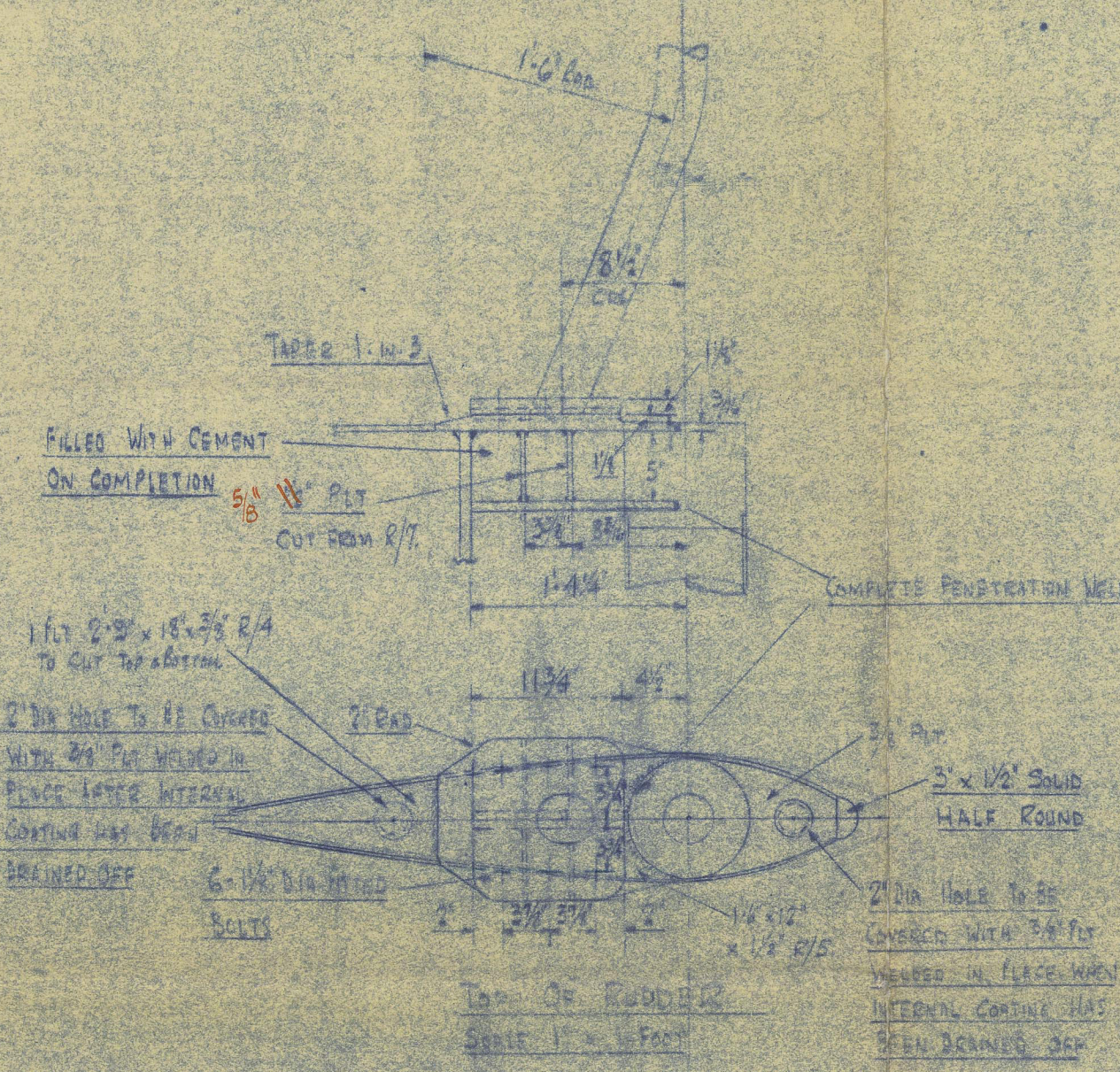
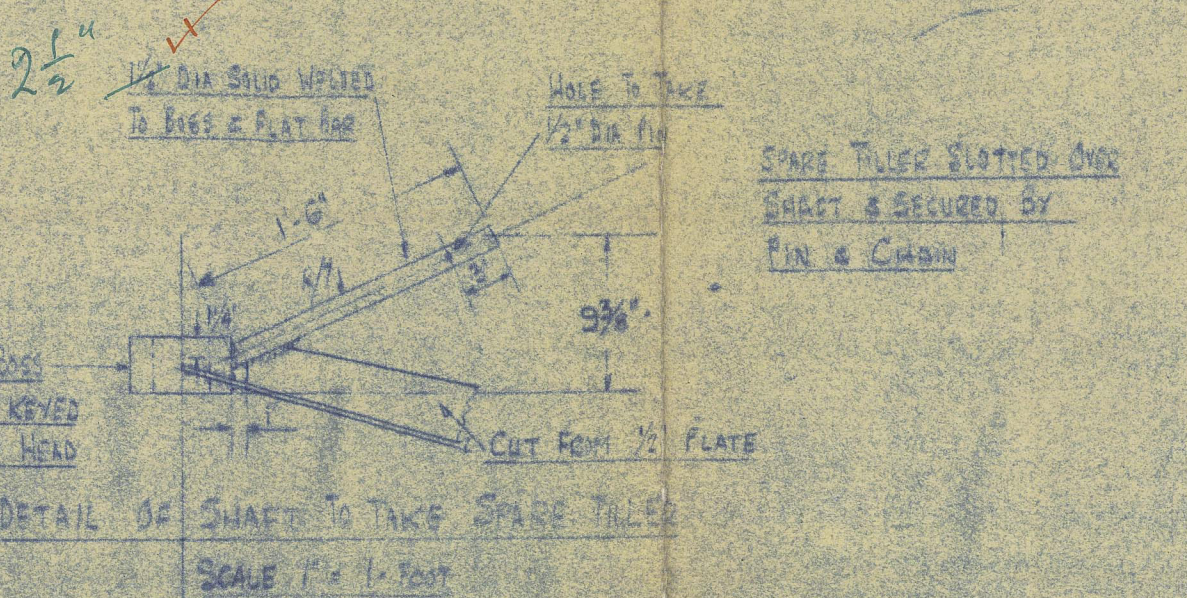


7 SECTION

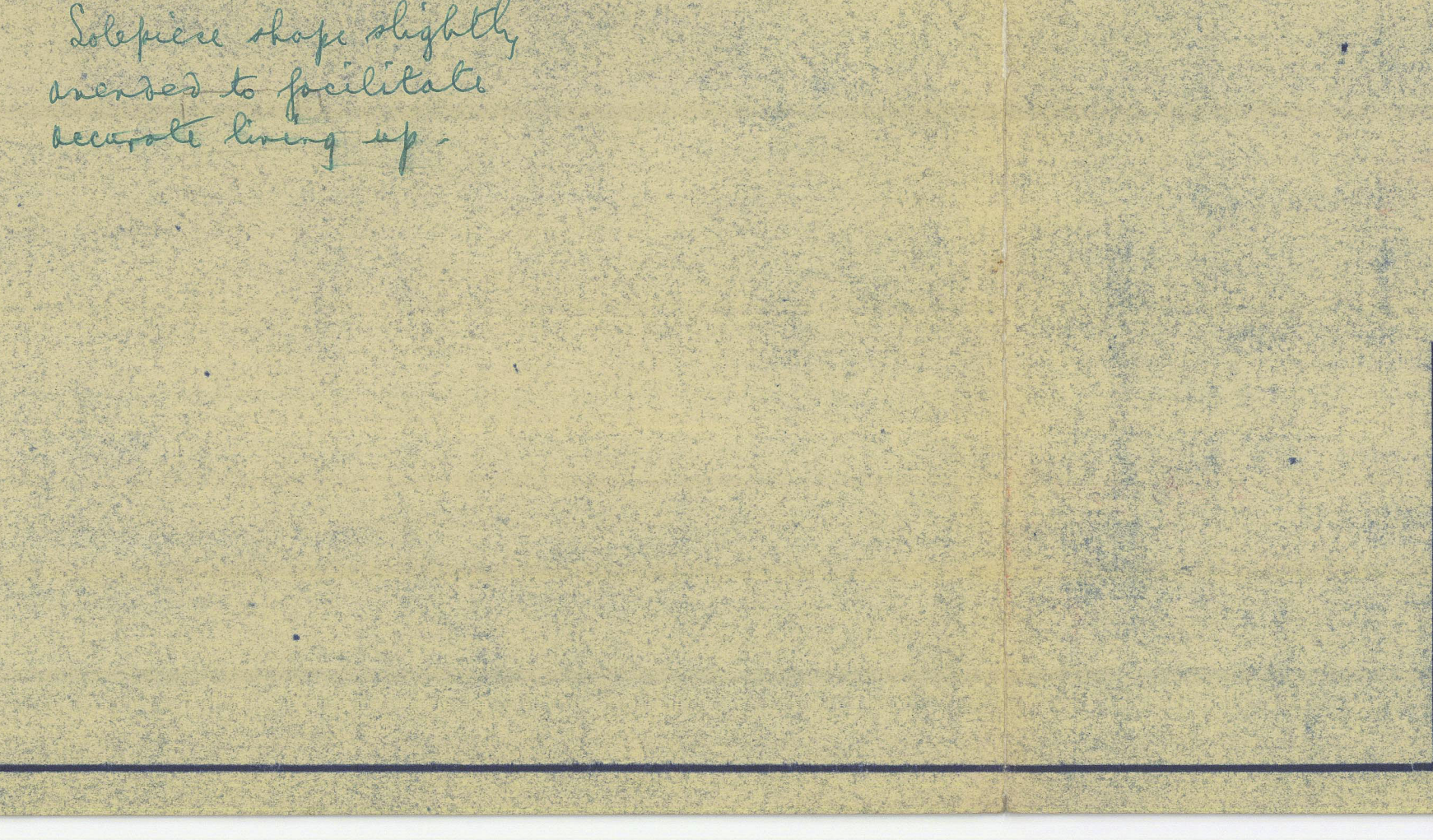


✓ IF SPARE TILLER IS FOR SECONDARY MEANS OF STEERING REQUIRED BY THE RULES, IT IS TO BE EQUIVALENT TO RULE REQUIREMENTS.

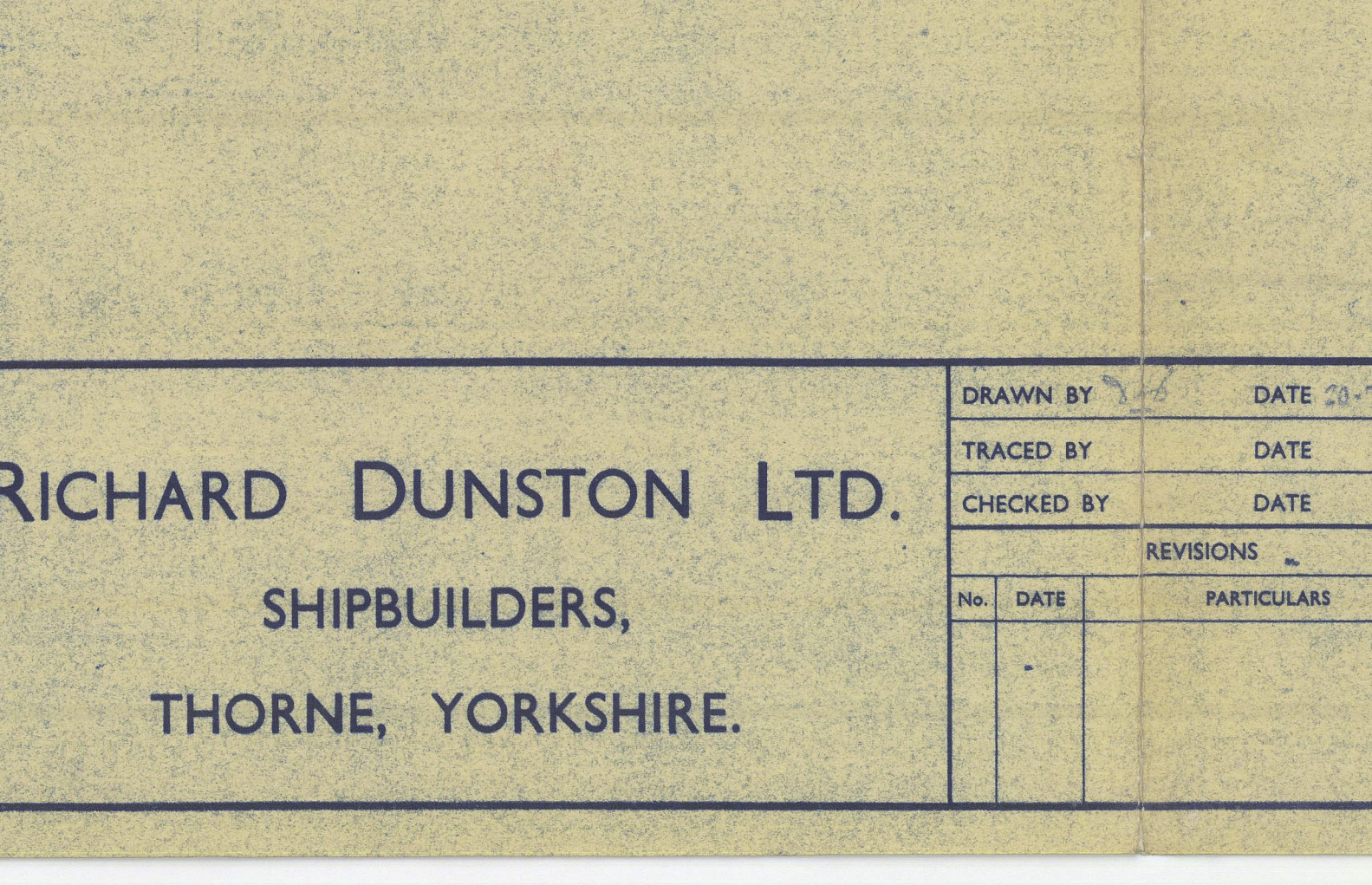


ITEM	DESCRIPTION	MATERIAL
1	MAINPIECE	BRIGHT STEEL
2	COUPLING	BRIGHT STEEL
3	BEARING RING UPPER HALF	BRIGHT STEEL
4	BEARING RING LOWER HALF	BRIGHT STEEL
5	UPPER SUBPSON	BRIGHT STEEL
6	LOWER SUBPSON	BRIGHT STEEL
7	UPPER GUARDSON	BRIGHT STEEL
8	LOWER GUARDSON	BRIGHT STEEL
9	UPPER LUG	BRIGHT STEEL
10	LOWER LUG	BRIGHT STEEL
11	UPPER COUPLING	BRIGHT STEEL
12	LOWER COUPLING	BRIGHT STEEL

THE CLEARANCE BETWEEN THE STEELFRAME AND THE PROPELLER IS TO BE THE RESPONSIBILITY OF THE BUILDERS AND DUNNERS.



ON COMPLETION RUDDER TO BE SUBJECTED TO A WATER TEST OF 15 TONS PER SQ. INCH & THEN TWICE FILLED & DRAINED WITH ASPHALT SOLUTION & DRAIN PLUG FITTED.



DIESEL DRIVEN BARGE FOR CARRYING PETROLEUM IN BULK FOR SERVICE ON THE RIVER HUNT, TIENT CANALS & AIRE & CALDER CANALS

DIMENSIONS:
LENGTH B.P. 123'-0"
BREADTH MLD. 17'-2"
DEPTH MLD. 8'-0" TO MAIN DECK
12'-2" R.O. DECK

A.V.D. OF RUDDER : 18-08 x 0-15 = 16-70
SPEED OF VESSEL : UNDER 10 KNOTS
DIA. OF RUDDER HEAD : 3'-6"

STEERING GEAR LEADS 134' CIRC 6/24 S.F.E.W.R.
EG. 80/100 TONS PER GEAR

RUDDER STOPS TO BE FIXED IN STEERING GEAR TO GIVE 40° OF HELM EACH SIDE OF 0

RICHARD DUNSTON LTD.

SHIPBUILDERS,

THORNE, YORKSHIRE.

DRAWN BY: DATE 20-7-55

TRACED BY: DATE

CHECKED BY: DATE

REVISIONS:

No. DATE PARTICULARS

YARD No. T.914.16

DRG. No. 5557/16

TITLE:— RUDDER & STERNFRAME

SCALE: 1/2" TO ONE FOOT

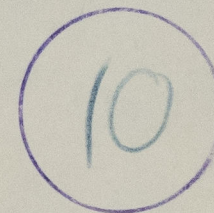
ESSE LEEEDS. ★

Richard Dunsen Ltd.

Yard No. 914

Hull T. E. Report No. 62347.

RECORDS DEPT.
LONDON.



RUDDER & STERNFRAME.



012853-012860-0151



© 2021

Lloyd's Register
Foundation